

INSTALLATION GUIDE: VW MK7 GTI - REAR SPATS (STREET EDITION)

HARDWARE (A)

QTY	DESCRIPTION
8	#8 x 3/4" LG SELF-TAP SCREW (BLK ZINC)
8	#8 X .438" OD SS WASHER (BLK OX)

HAVE THE FOLLOWING TOOLS READY FOR USE

- Drill •9/64" Drill Bit
- Phillips Screwdriver •Light Colored Marking Tool

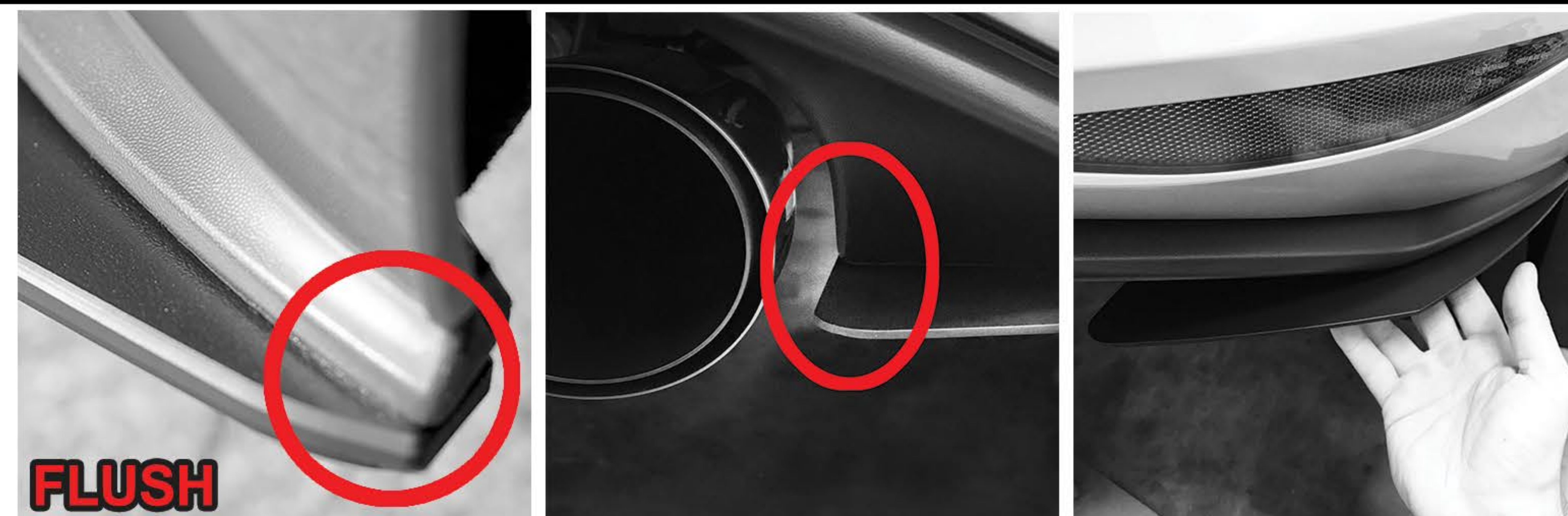
aerofabb, LLC is not responsible for damage to you or your vehicle while following this Install Guide and/or installing aerofabb products. Professional install is recommended.

1. Starting on which ever side (Right or Left), place Spat on bottom side of Factory Valance. Align the front edge of Spat closest to rear wheels with the edge of Factory Valance.

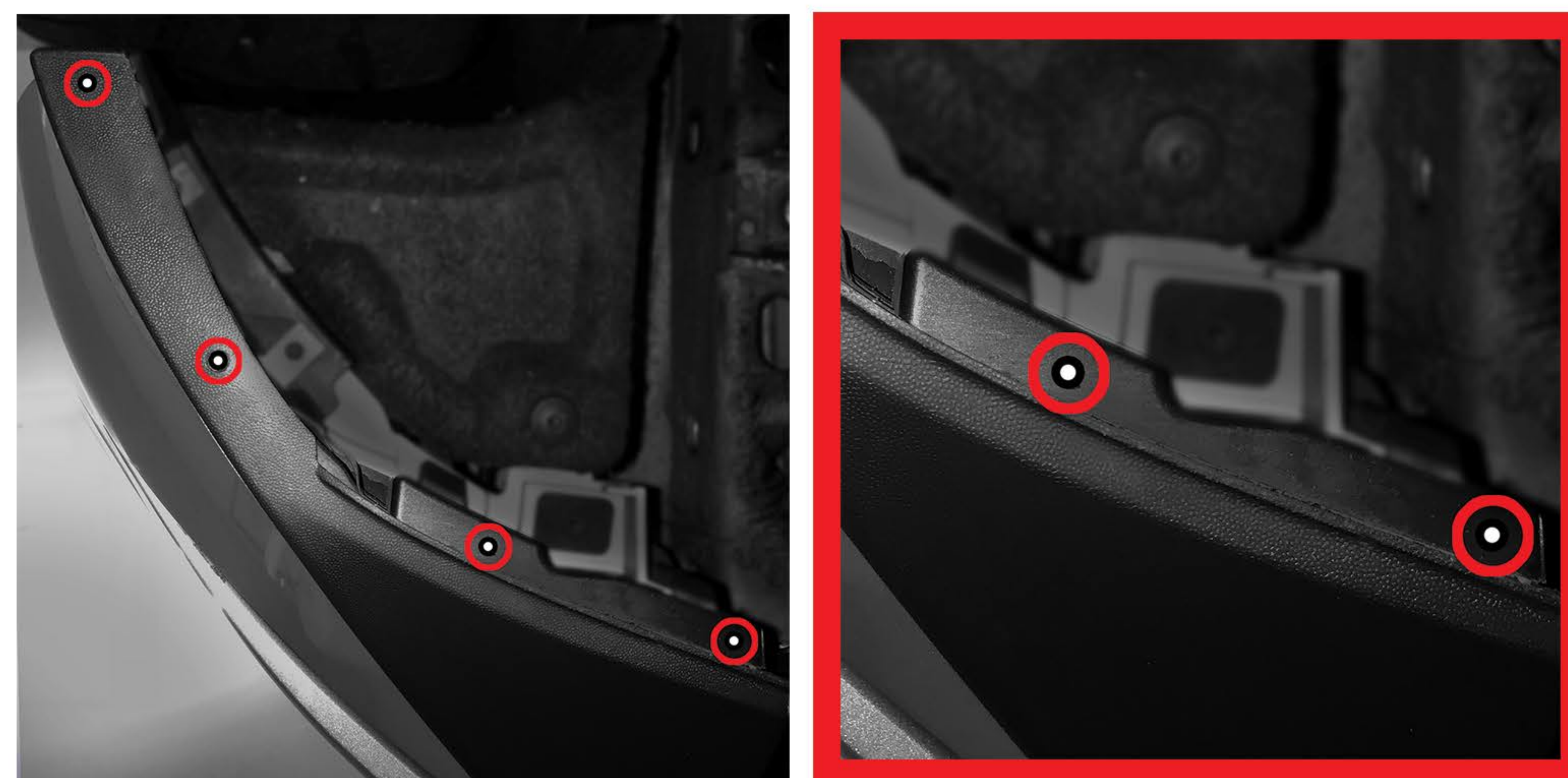
-Front edge of Spat and Valance should match/sit flush with one another. Back edge of Spat (closest to exhaust) should sit flush with outer edge of exhaust cut out as shown.

NOTES:

1. CONFIRM NO HARDWARE IS MISSING BEFORE INSTALL.
2. DO NOT OVERTIGHTEN HARDWARE



2. With the Side Spat aligned, use a **Light Colored Marking Tool** to mark through the pre-drilled holes onto bottom side of Factory Valance. Remove Spat.
-IMPORTANT: As shown below, markings on surface should be placed in center of ledge.



3. Using a **9/64 Drill Bit**, create pilot holes by drilling through all four of your markings on bottom of Valance.

4. With pilot holes drilled, place Side Spat back onto bottom side of valance and align the pre-drilled holes with your pilot holes. Using a **Phillips Screwdriver**, install **HARDWARE (A)** through holes and into Valance. Tighten until snug/Valance sits flush with Side Spat. Repeat on opposite side.

-IMPORTANT: Screws are self tapping but may require some additional pressure to be applied before they begin to thread. DO NOT OVER TIGHTEN!