



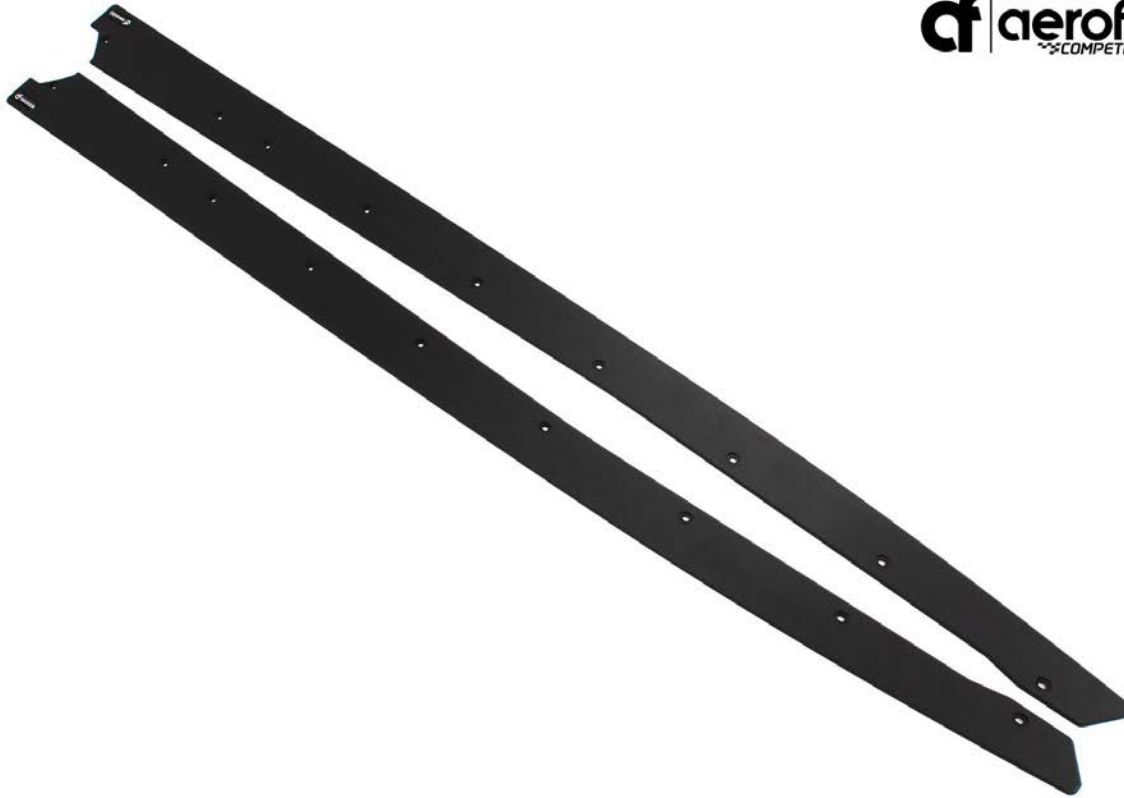
# INSTALL GUIDE

## TOYOTA SUPRA MK5

COMPETITION SERIES SIDE SPLITTERS

### DISCLAIMER

aerofabb, LLC is not responsible for damage to you or your vehicle while following this Install Guide and/or installing aerofabb products. Professional install is recommended. aerofabb also encourages you to read through this Install Guide in its entirety before beginning the actual installation process.



**M5 RIVET NUT INSTALL TOOL (X2)**

QTY	DESCRIPTION
2	SERRATED LOCKNUT 5/16" - 18
4	1/4" X 1" FENDER WASHER
2	M5 X 35MM BLK-OX ALLOY BOLT

**HARDWARE (A)**

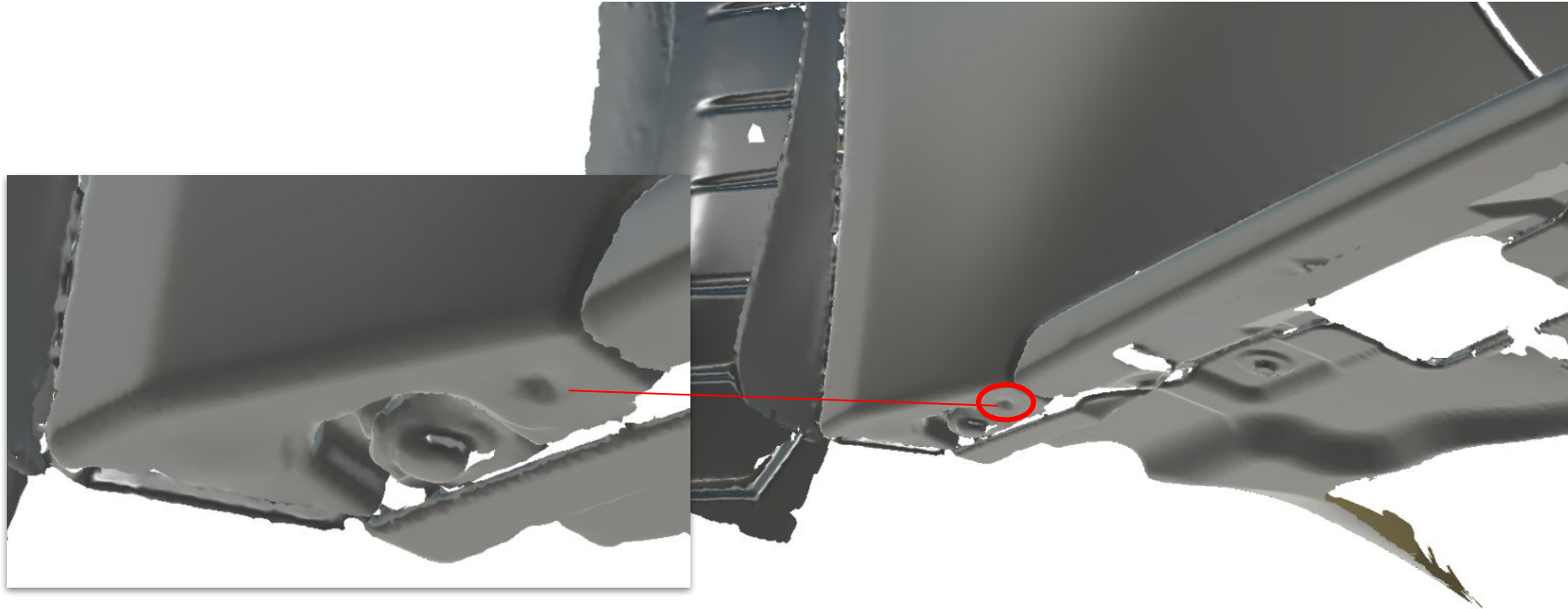
QTY	DESCRIPTION
18	M5 RIVET PLUS NUT
18	#10 X 1" FENDER WASHER
18	M5 X 18MM BOLT

**TOOLS NEEDED**

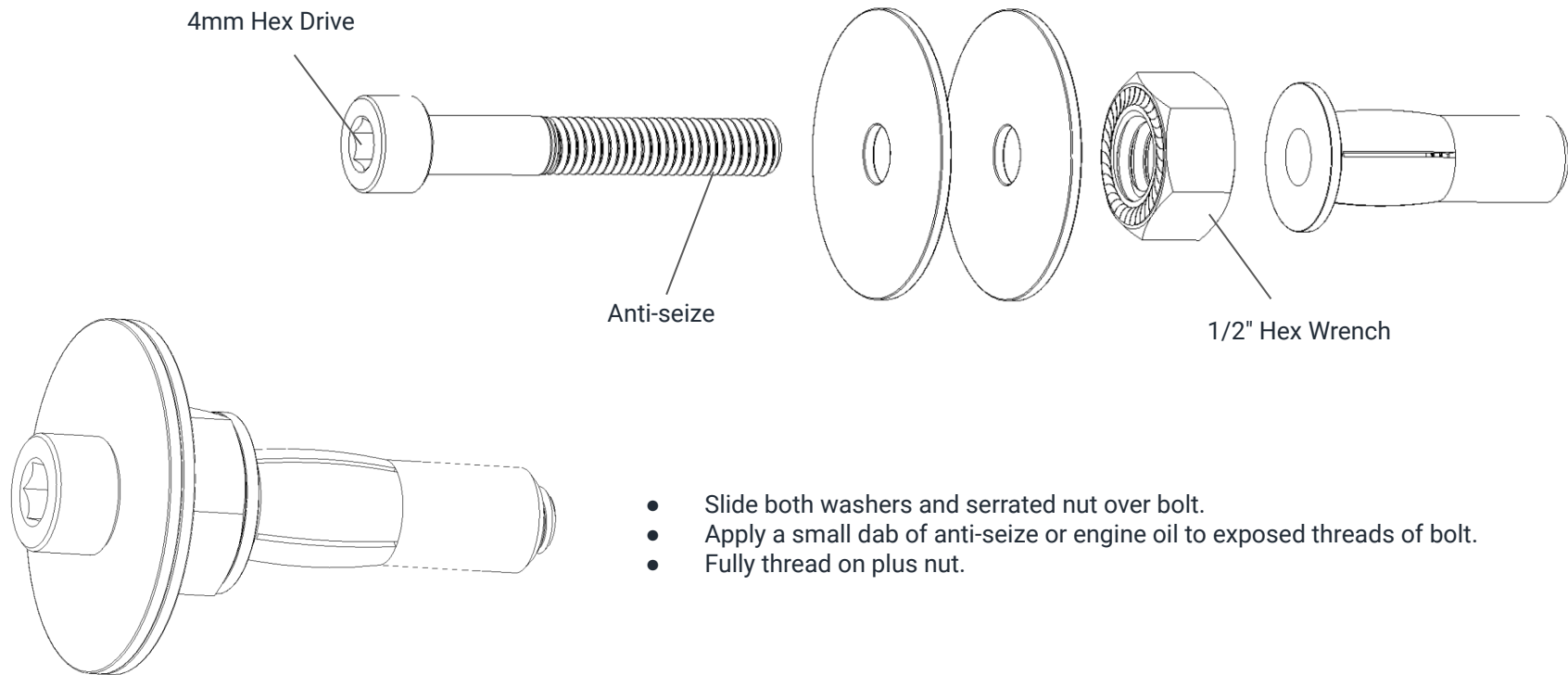
QTY	DESCRIPTION
1	DRILL
1	DRILL BITS: 1/8", 5/32", 3/16", 1/4", 9/32", 5/16", 11/32".
1	1/2" HEX WRENCH
1	4MM HEX DRIVE
1	3MM HEX DRIVE
1	ANTI-SEIZE OR ENGINE OIL
1	MARKING TOOL (PUNCH or MARKER)
1	HELPING HAND

1. Identify the two pre-existing holes at the bottom your drivers side factory front fender. We will be drilling out the hole furthest from the front wheels as shown in figures below. Using a **Drill** and appropriate **Drill Bits**, step up to a final size of **11/32"**.

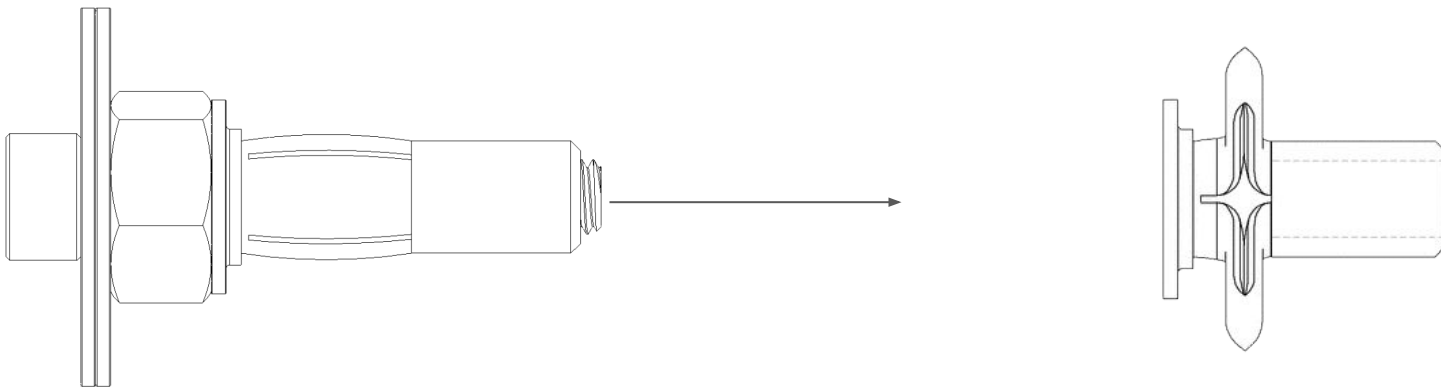
*NOTE: You will be drilling through two layers of material (fender / body)*



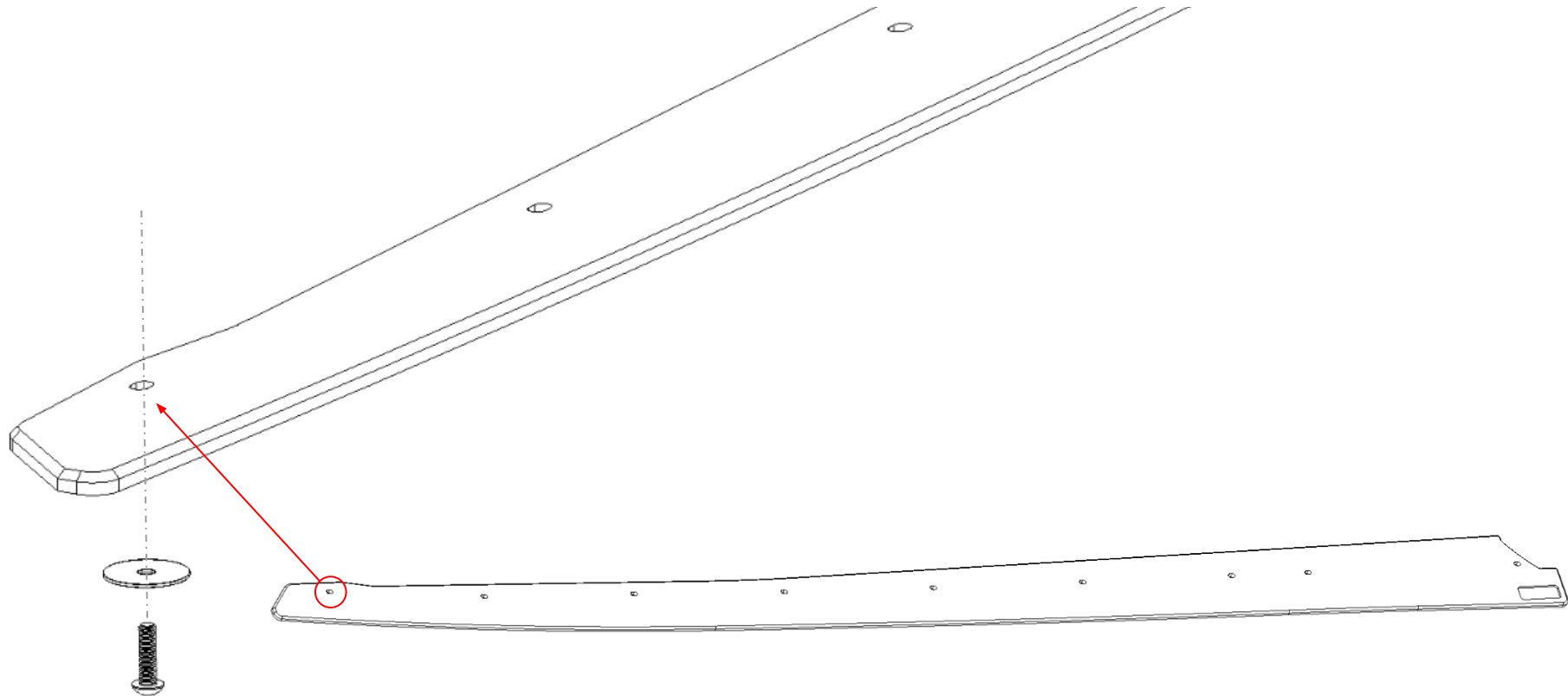
2. You will need a **Drill** with a **4mm Hex Drive**, **1/2" Hex Wrench**, and **Anti-seize** to install your **M5 Rivet Plus Nut** from **HARDWARE (A)**.



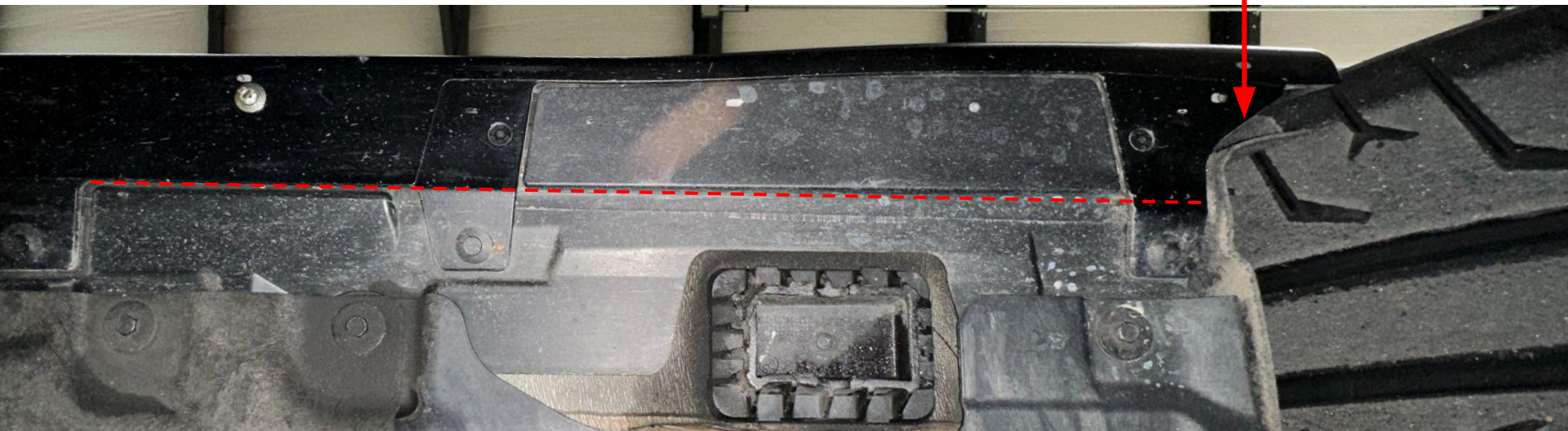
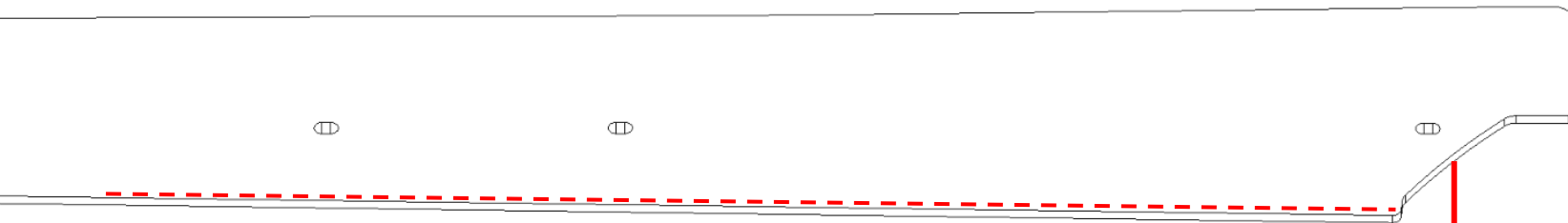
3. With the **M5 Rivet Plus Nut** threaded on your tool, insert the rivet plus nut into the fender hole that you just drilled. Use your **1/2" Hex Wrench** to hold the nut stationary as you thread the bolt clockwise with your **Drill** and **4mm Hex Drive**. The plus nut will compress inside the fender sandwiching itself in place.



4. With the **M5 Rivet Plus Nut** installed into the pre existing fender hole, place the side splitter up to your Supra. Use a **3MM Hex Drive** to install one **M5 X 18MM Bolt** and one **#10x1" Fender Washer** through the most forward hole on side splitter and into the **M5 Rivet Plus Nut**. Leave hand tight.



5. We recommend a **Helping Hand** for this part. With the most forward fastener installed through the side splitter, pivot the rear of the side splitter to match the factory profiles on the underside of your Supra. Make sure the center of the side splitter is properly supported and not sagging during this process, otherwise you may be given a false measurement. With the profiles properly matched, and side splitter aligned in place, use your **Marking Tool** to mark center through the remaining side splitter holes and onto the underside of your Supra.





5. For this next step, you can either rotate the side splitter out of the way or remove the most forward fastener and side splitter entirely. Using a **Drill** and **1/8" Drill Bit**, create pilot holes through the center of your markings. Step up all holes using a **5/32", 3/16", 1/4", 9/32", 5/16"**, to a final **Drill Bit** size of **11/32"**.

6. Refer to Page #2 for the installation of **Rivet Plus Nuts** into all remaining holes.

7. Place side splitter up to the vehicle and fasten using all remaining **M5 X 18MM Bolts** and **#10 X 1" Fender Washers** from **HARDWARE (A)**. Tighten all hardware to 7-8 ft lbs or "wrist tight".

*Tips: Tighten from front to back. The holes on side splitter are slotted to allow forward and back adjustment if needed.*

8. Repeat steps 1-7 to opposite side of vehicle to complete this installation.

