



# INSTALL GUIDE

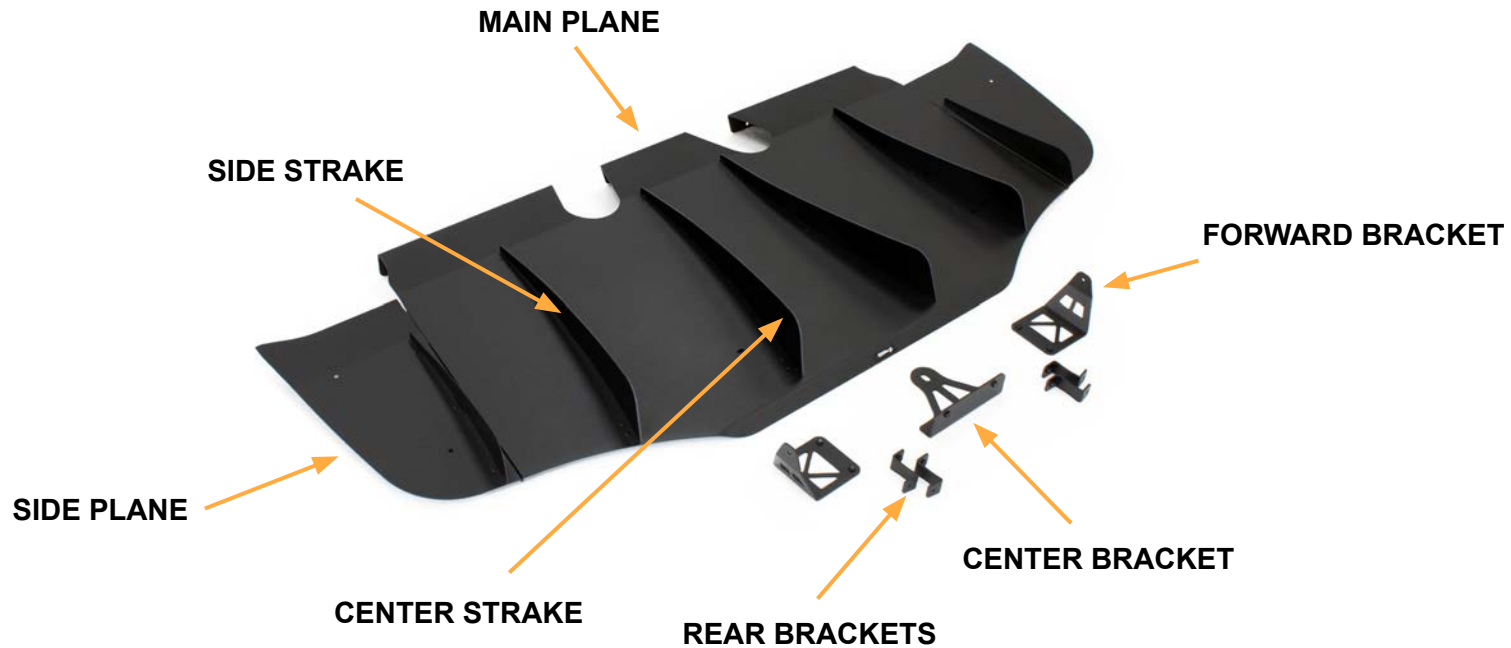
## TOYOTA SUPRA MK5

COMPETITION SERIES REAR DIFFUSER

### DISCLAIMER

aerofabb, LLC is not responsible for damage to you or your vehicle while following this Install Guide and/or installing aerofabb products. Professional install is recommended. aerofabb also encourages you to read through this Install Guide in its entirety before beginning the actual installation process.

## PART IDENTIFICATION



**M6 RIVET NUT INSTALL TOOL**

QTY	DESCRIPTION
1	SERRATED LOCK NUT 5/16" - 18
2	1/4" X 1" FENDER WASHER
1	M6 X 35MM BLK-OX ALLOY BOLT

**HARDWARE (A)**

QTY	DESCRIPTION
12	M5 X 10MM BUTTON CAP BOLT

**HARDWARE (B)**

QTY	DESCRIPTION
4	M5 X 10MM BUTTON CAP BOLT
4	M5 LOCK NUT

**HARDWARE (C)**

QTY	DESCRIPTION
2	M6 X 25MM BUTTON CAP BOLT
2	M6 X 18MM WASHER
2	M6 RIVET PLUS NUT

**HARDWARE (D)**

QTY	DESCRIPTION
4	M6 X 16MM BUTTON CAP BOLT
4	M6 X 18MM WASHER

**HARDWARE (E)**

QTY	DESCRIPTION
6	M6 X 16MM BUTTON CAP BOLT
6	M6 X 18MM WASHER

### HARDWARE (F)

QTY	DESCRIPTION
4	M6 X 30MM BUTTON CAP BOLT
4	M6 X 18MM WASHER
4	M6 RIVET PLUS NUT
2	<b>1/2" OD X 1/4" LG SPACER</b>
2	<b>3/4" OD X 3/8" LG SPACER</b>

### TOOLS NEEDED

QTY	DESCRIPTION
1	DRILL
1	10MM DRILL BIT
1	RATCHET
1	1/2" WRENCH
1	8MM WRENCH
1	E12 SOCKET
1	5MM HEX DRIVE
1	4MM HEX DRIVE
1	3MM HEX DRIVE
1	ANTI-SEIZE OR ENGINE OIL
1	PRY TOOL OR FLAT HEAD SCREWDRIVER
1	TORQUE WRENCH
1	BUBBLE LEVEL OR DIGITAL ANGLE FINDER

## SPACER KIT INFO ON PAGE

### SPACER KIT REAR

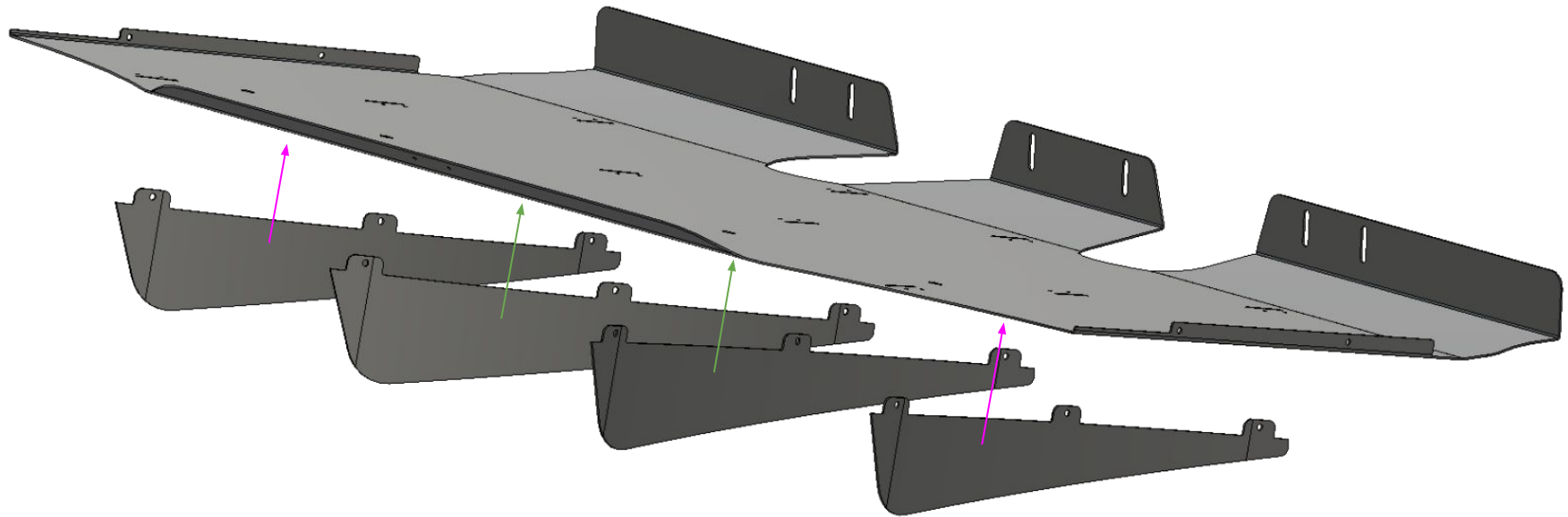
QTY	DESCRIPTION
4	M6 X 30MM BUTTON CAP BOLT
4	1/2" OD X 1/4" LG SPACER
4	3/4" OD X 1/2" LG SPACER

### SPACER KIT SIDE

QTY	DESCRIPTION
4	M6 X 40MM BUTTON CAP BOLT
4	3/4" OD X 1/2" LG SPACER
4	3/4" OD X 5/8" LG SPACER
4	3/4" OD X 3/4" LG SPACER
4	3/4" OD X 1" LG SPACER

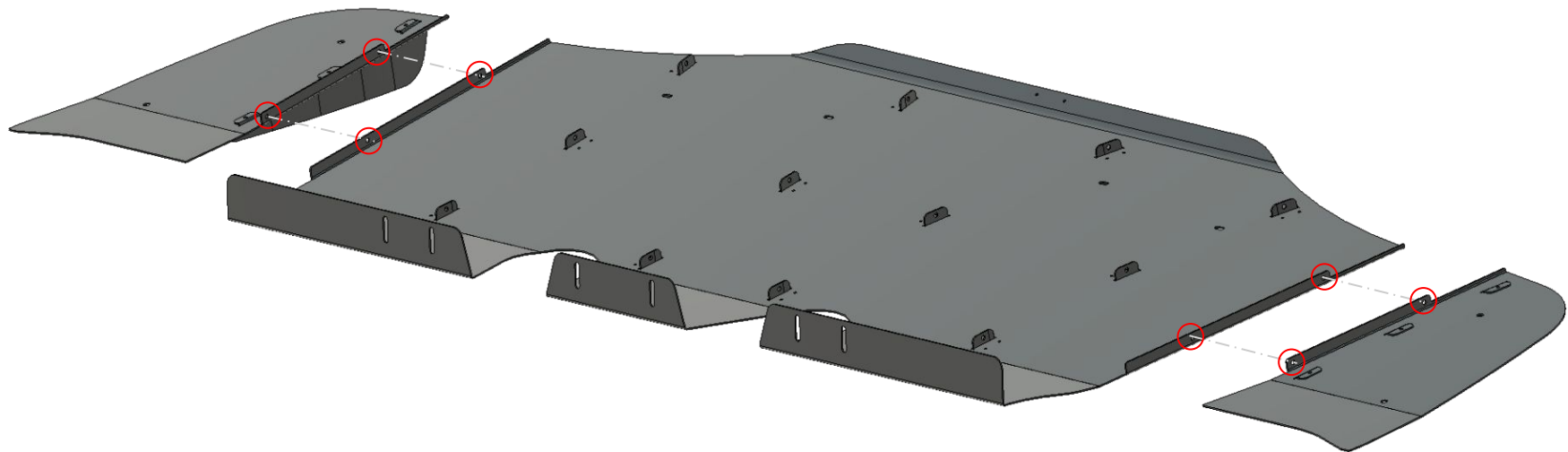
1. Install your **Center Strakes (Long)** and **Side Strakes (Short)** into your main plane. Fit the teeth into slots on main plane lining up the holes on strakes with the press nuts in brackets. Use a **3mm Hex Drive** and **medium thread lock** to fasten with **Hardware (A)**.

*NOTE: Head of bolts mount on strake side.*

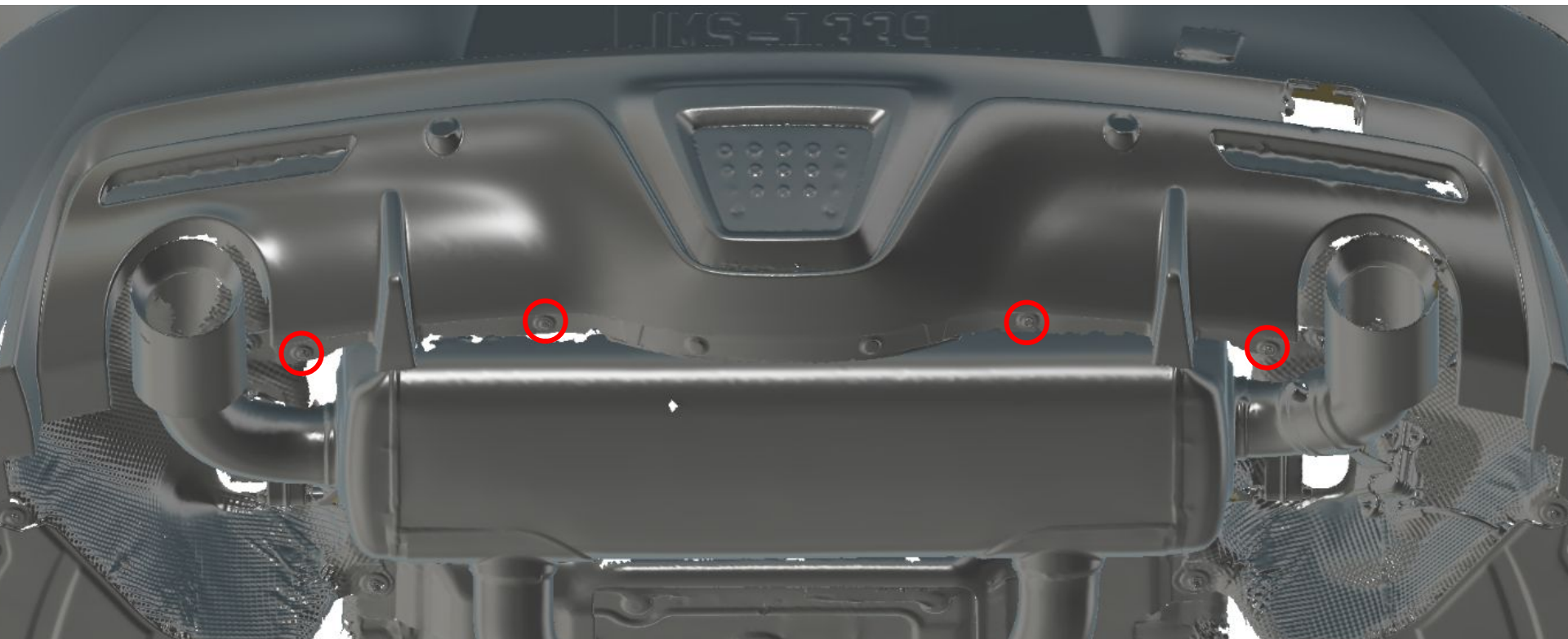


2. Use a **3mm Hex Drive** and **8mm Wrench** to fasten both side planes to the main plane with **HARDWARE (B)**.

*NOTE: Head of bolts face inside.*



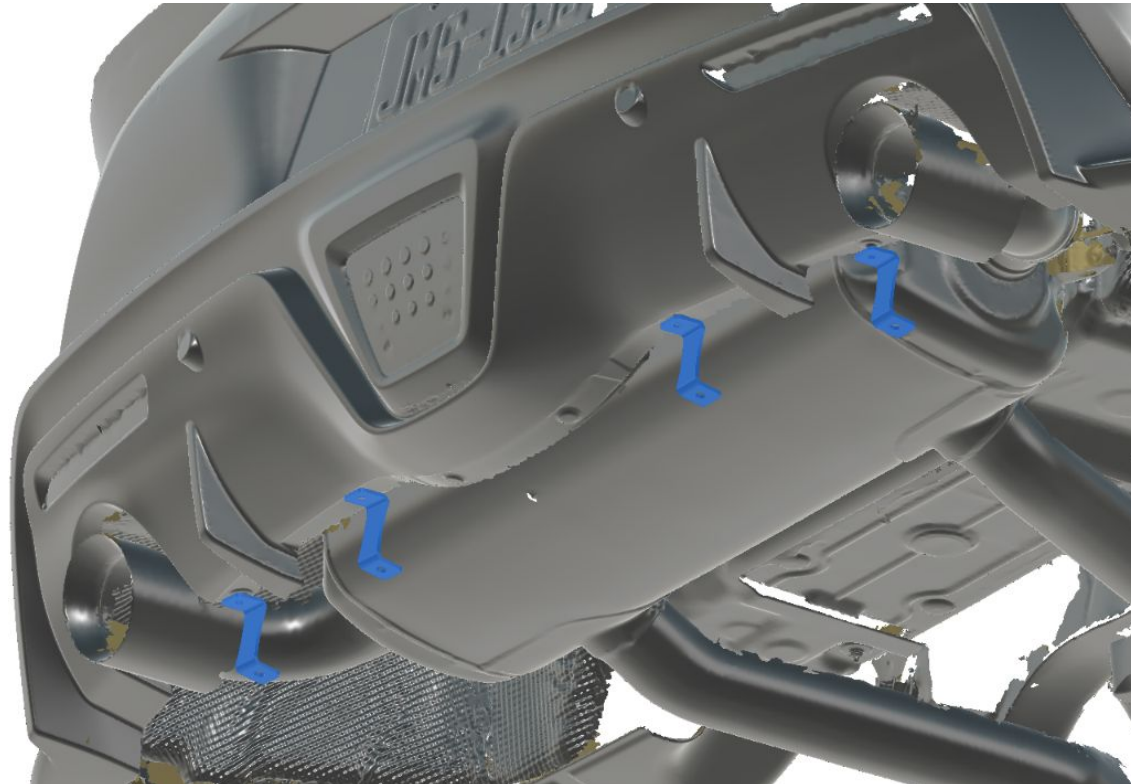
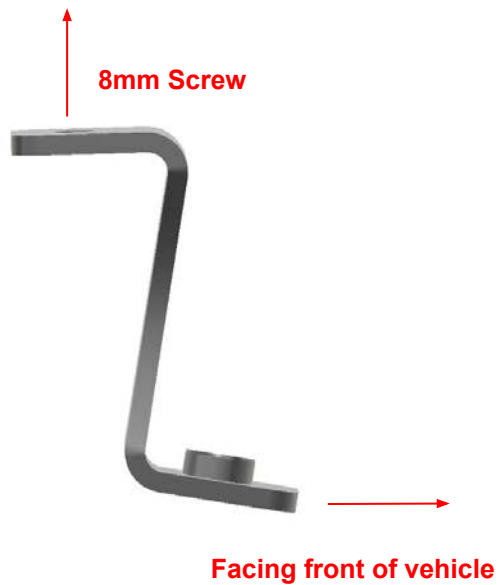
3. Use a **8mm Socket** to remove the four factory screws from the rear bumper locations circled in red.



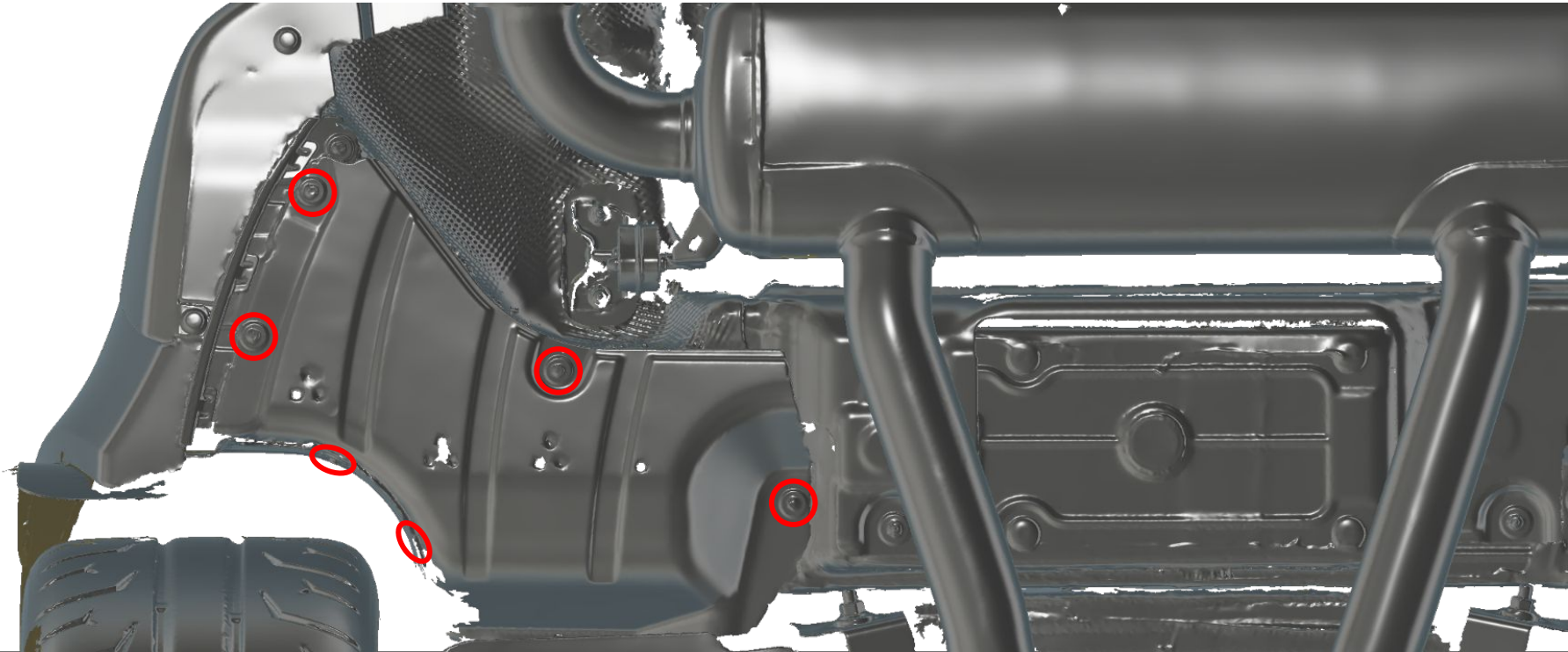


4. Use a **8mm Socket** to install the four rear brackets reusing the factory screws as shown below. Note the orientation of the rear brackets and press nut location. The factory screw goes through the open hole with no press nut and into the body. The brackets should be square to the vehicle with the press nut end facing the front.

*CAUTION: DO NOT OVERTIGHTEN SCREWS!*



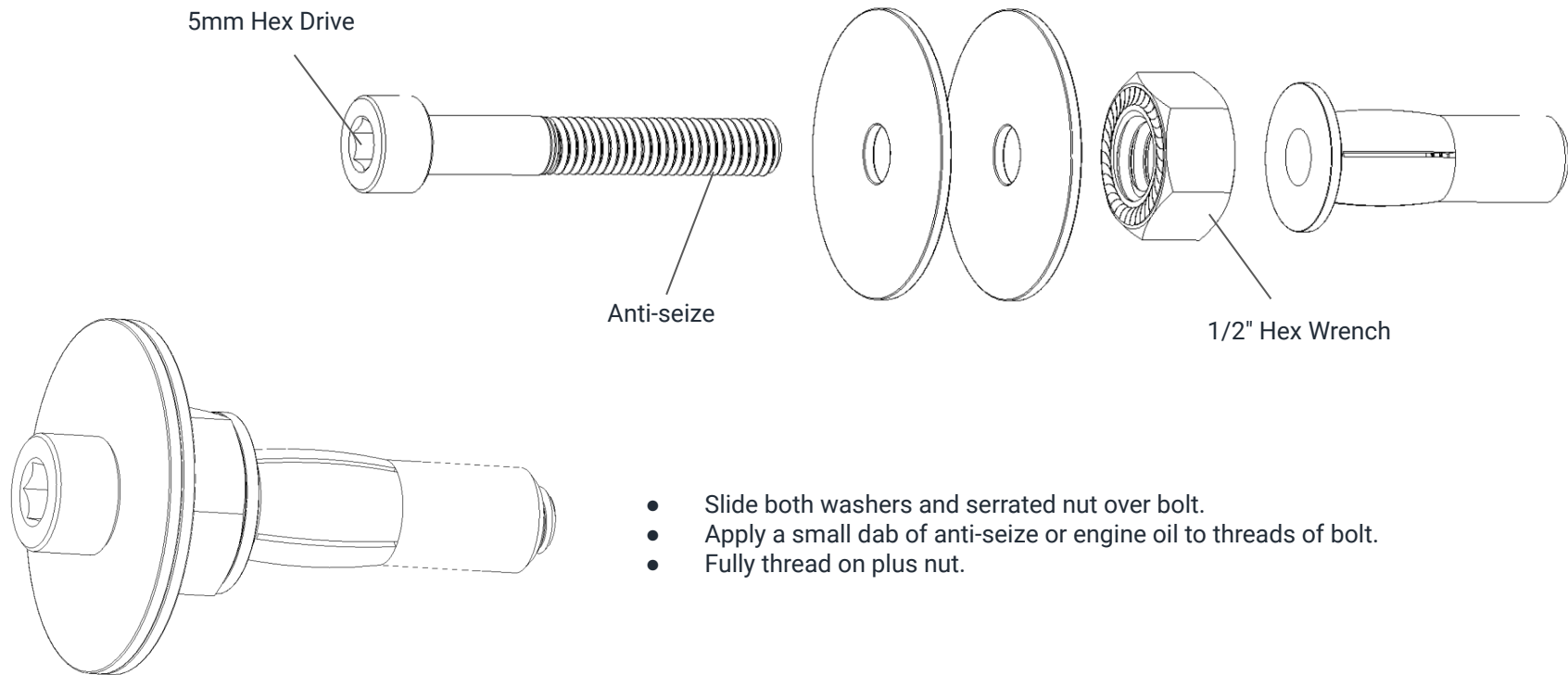
5. Use a **8mm Socket** to remove the twelve factory screws from the underside of the vehicle circled in red (six on each side with two of them in each wheel well). Remove the plastic covers.



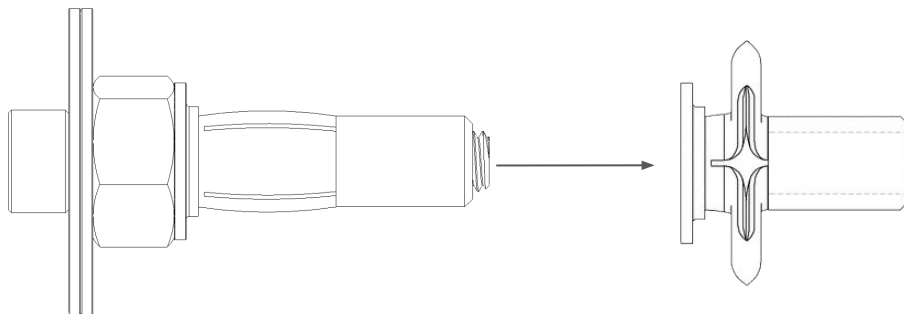
6. Using a large **flat head screwdriver** or **pry tool**, remove the two factory plastic nuts (one on each side) that are pressed into the chassis. The location is circled in red below.



7. For this next step, you will need a **Drill** with a **5mm Hex Drive**, **1/2" Hex Wrench**, and **Anti-seize** to install your **M6 Rivet Plus Nut** from **HARDWARE (C)**.

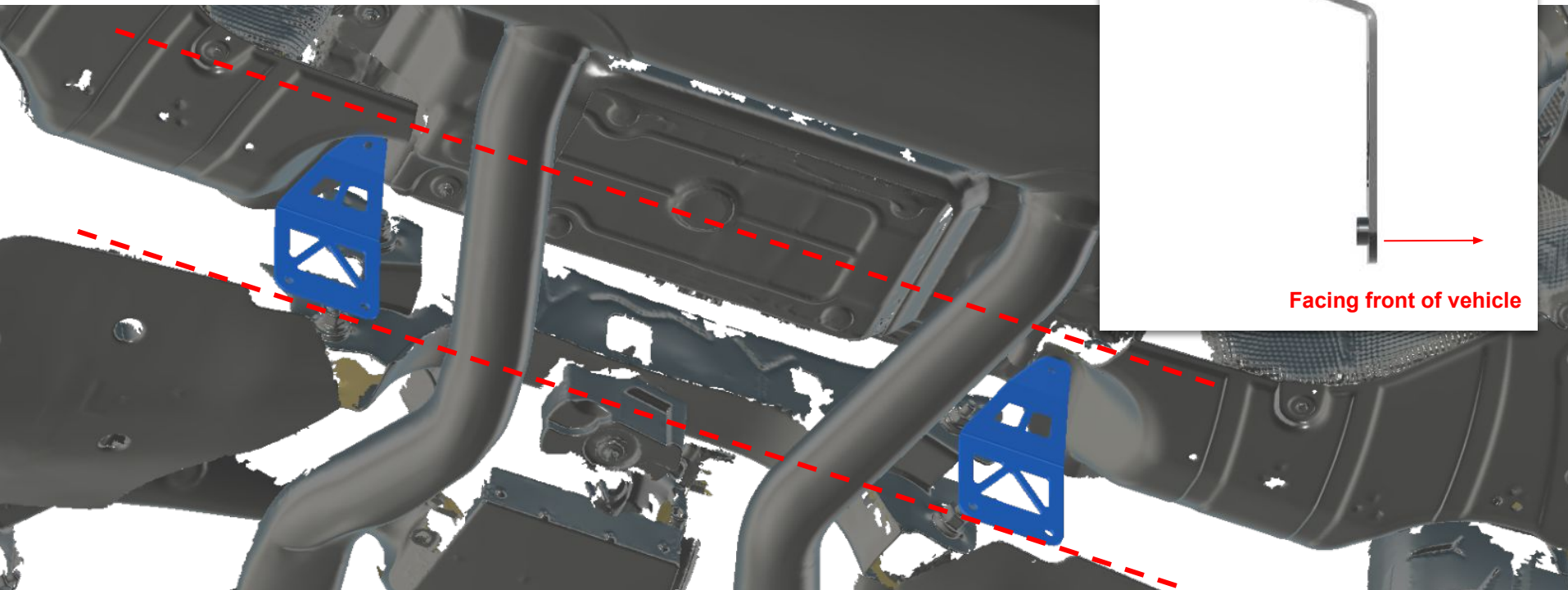


7.1. With the **M6 Rivet Plus Nut** threaded on your tool, **FULLY** insert the rivet plus nut into the hole which originally held the plastic nuts. Use your **1/2" Hex Wrench** to hold the nut stationary as you thread the bolt clockwise with your **Drill** and **5mm Hex Drive**. The plus nut will compress and sandwich itself in place. Repeat this process on opposite side. Reinstall both factory covers. Put the two left over 8mm factory screws to the side as you will no longer have a need for them.

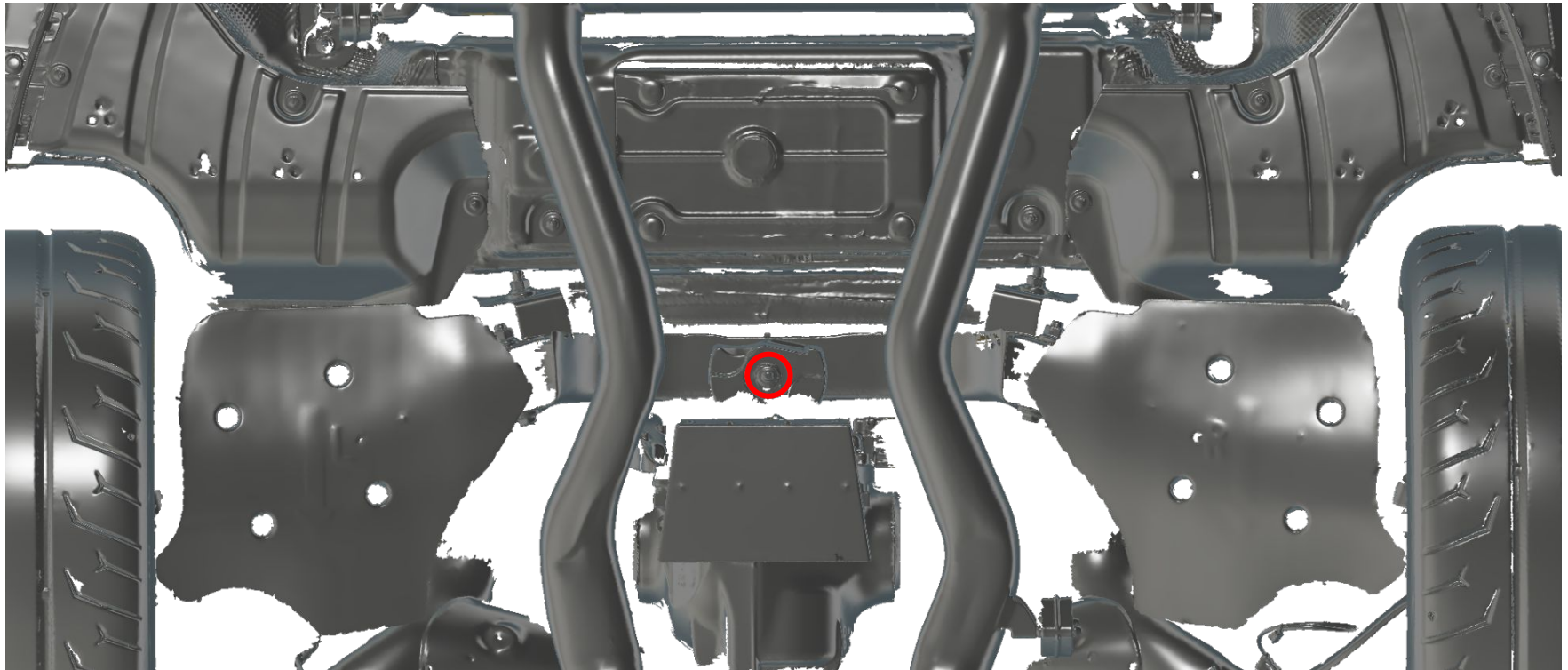


8. Install your forward brackets into the M6 rivet nuts using a **4mm Hex Drive, medium thread lock**, and remaining bolts + washers from **HARDWARE (C)**. Torque to 6 ft lbs.

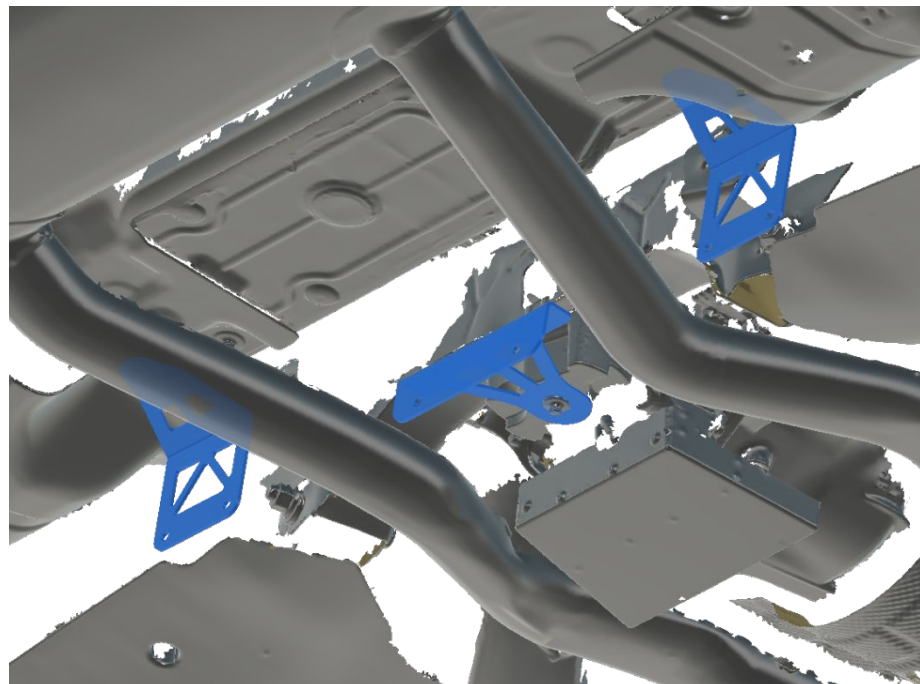
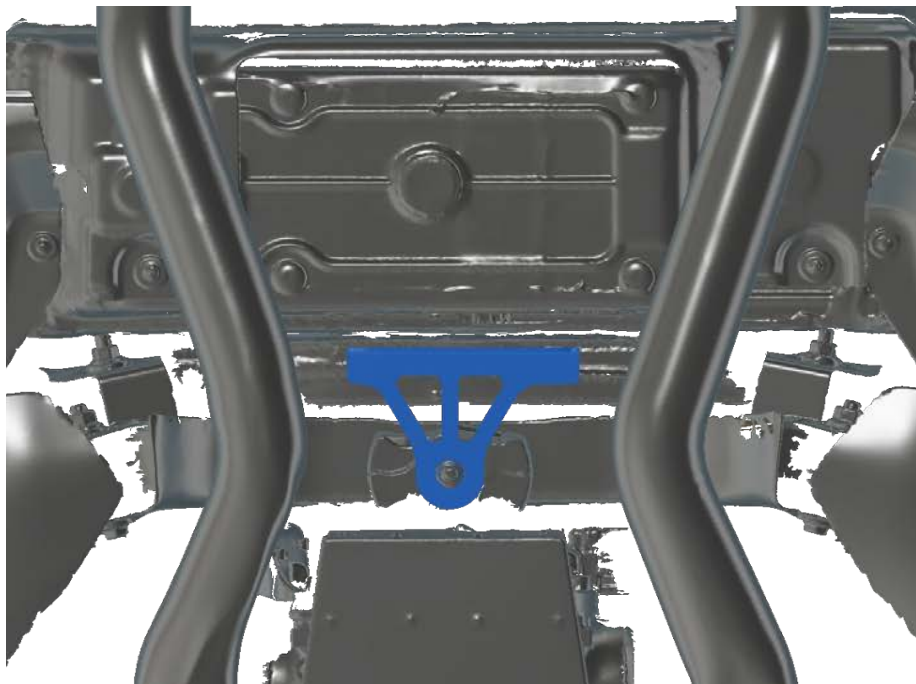
*Note the orientation of forward brackets. These brackets should be installed over top of the factory covers and NOT in between.*



9. Use a **Ratchet** and **E12 Socket** to remove the damper attached to your rear subframe.

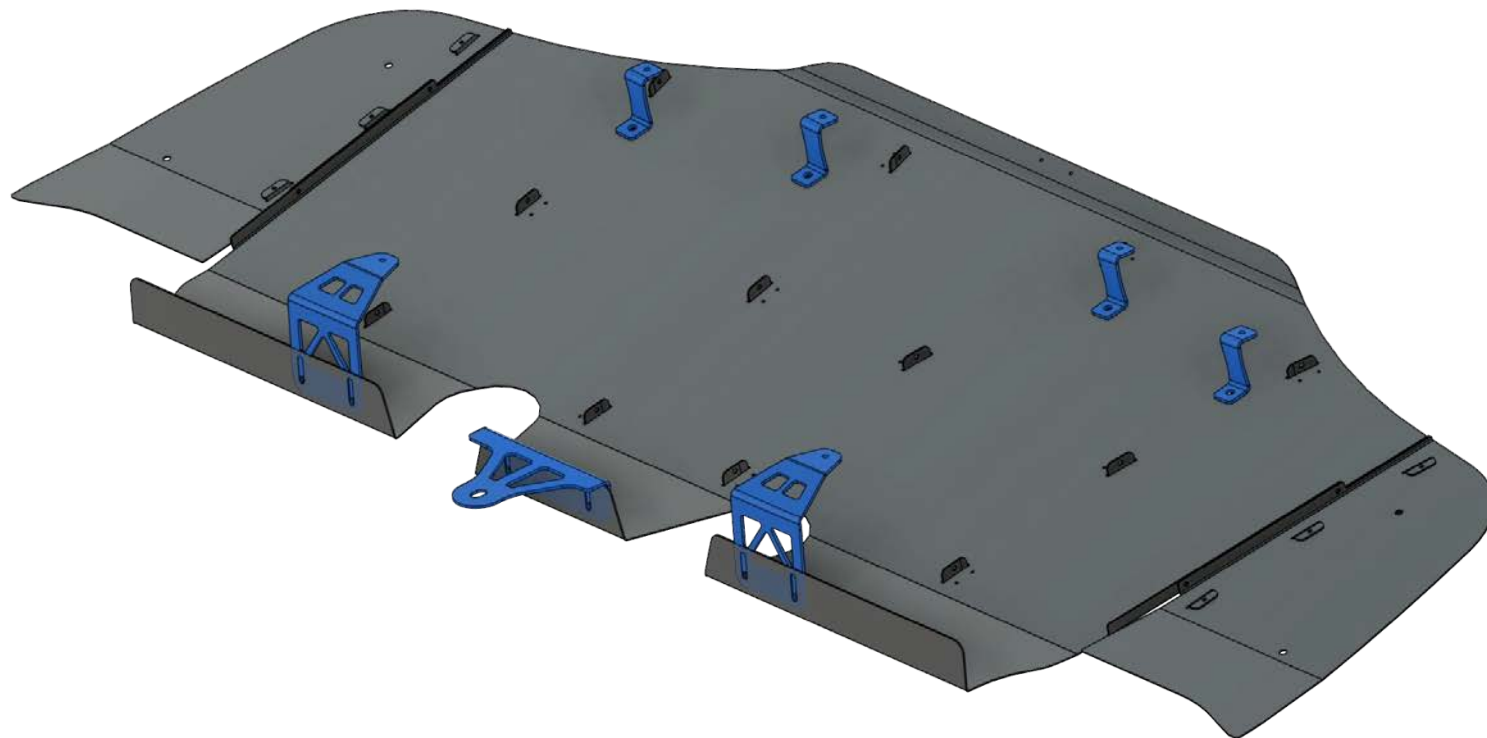


10. Reusing the factory bolt, use a **Ratchet** and **E12 Socket** to install the center bracket on the bottom side of damper as shown below. Tq to 21ft lbs.  
*Note the orientation of all brackets at this stage. See next page for full visual reference.*

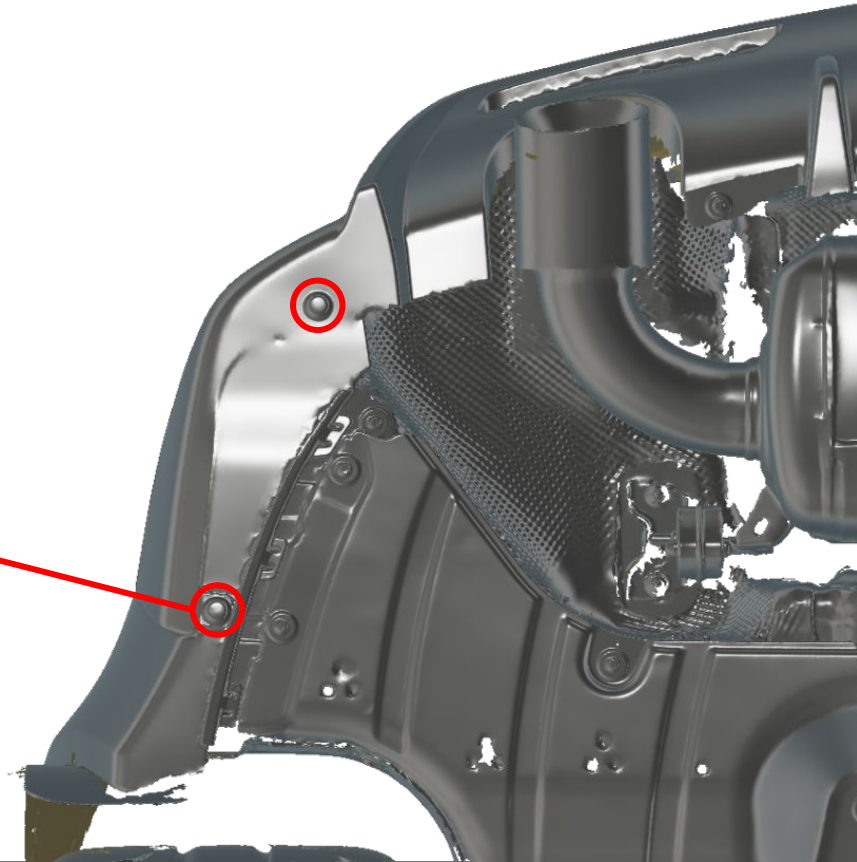




## BRACKET ORIENTATION



11. Using a **Flat Head Screwdriver or Pry Tool**, remove the four factory bumper clips (two on each side) circled in red below.



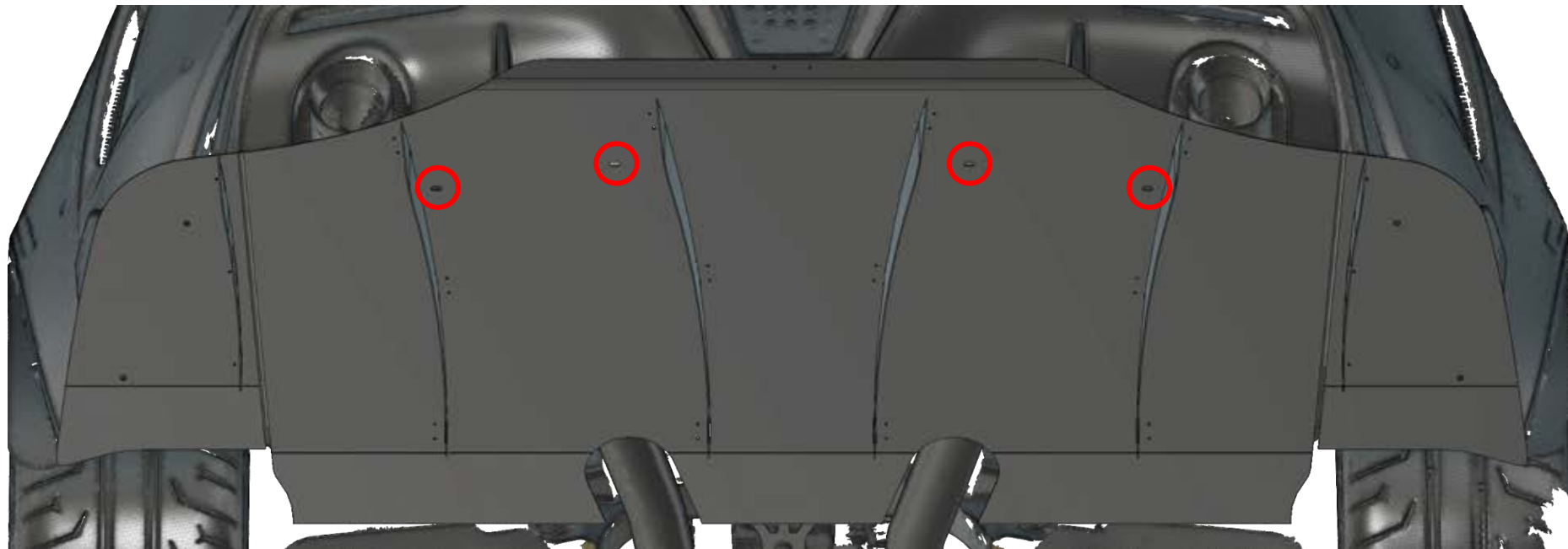
12. Replace the clips removed in Step. 9 with the rivet nuts from **HARDWARE (F)**.

*NOTE: The rivet nuts should push into holes with medium force. If the rivet nuts will not fit, use a drill and 10mm drill bit to lightly wallow out holes just enough for them to fit with mild force.*



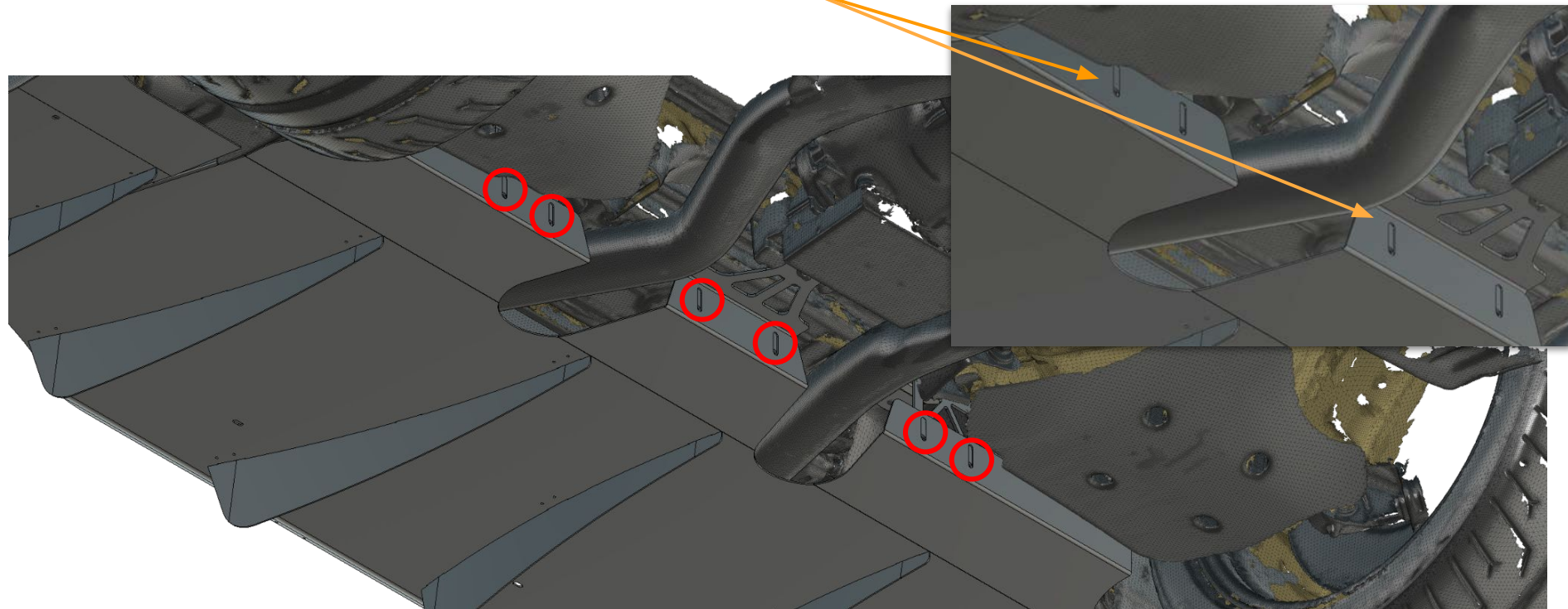
13. Ensure all mounting brackets are tight and positioned correctly. Raise your assembled Diffuser up to the car. Use a **4mm Hex** and **medium thread lock** to install **HARDWARE (D)** in marked locations. **DO NOT FULLY TIGHTEN.**

*NOTE: All hardware in this step should be installed with medium thread lock. Holes are slotted to allow for small positioning errors.*



14. Use a 4mm Hex and medium thread lock to install **HARDWARE (E)** into marked locations. DO NOT FULLY TIGHTEN.

*NOTE: All hardware in this step should be installed with medium thread lock. BRACKETS MOUNT ON INSIDE OF BEND.*



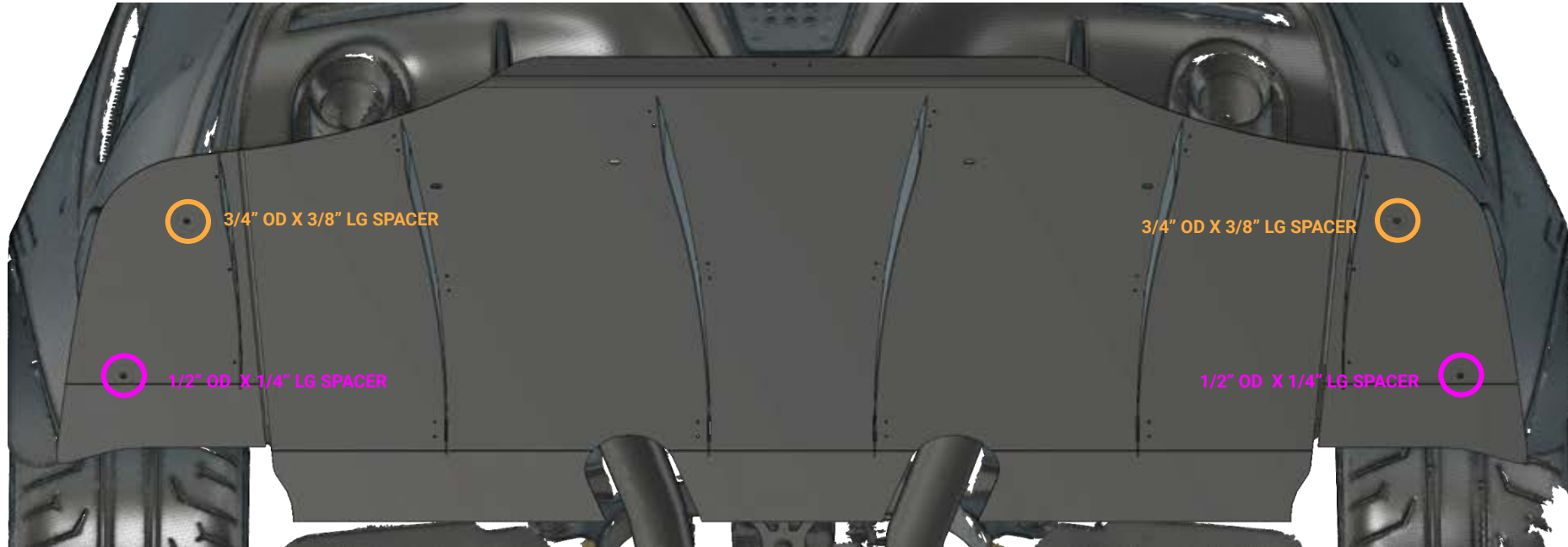
15. Use a 4mm Hex and medium thread lock to install **HARDWARE (F)** in marked locations. The Spacers install in between the Diffuser and Bumper.

**1/2" OD X 1/4" LG SPACERS** install closest to wheels.

**3/4" OD X 3/8" LG SPACERS** install closest to rear of bumper.

DO NOT FULLY TIGHTEN.

*NOTE: All hardware in this step should be installed with medium thread lock. The Spacers install in between the Diffuser and Bumper.*

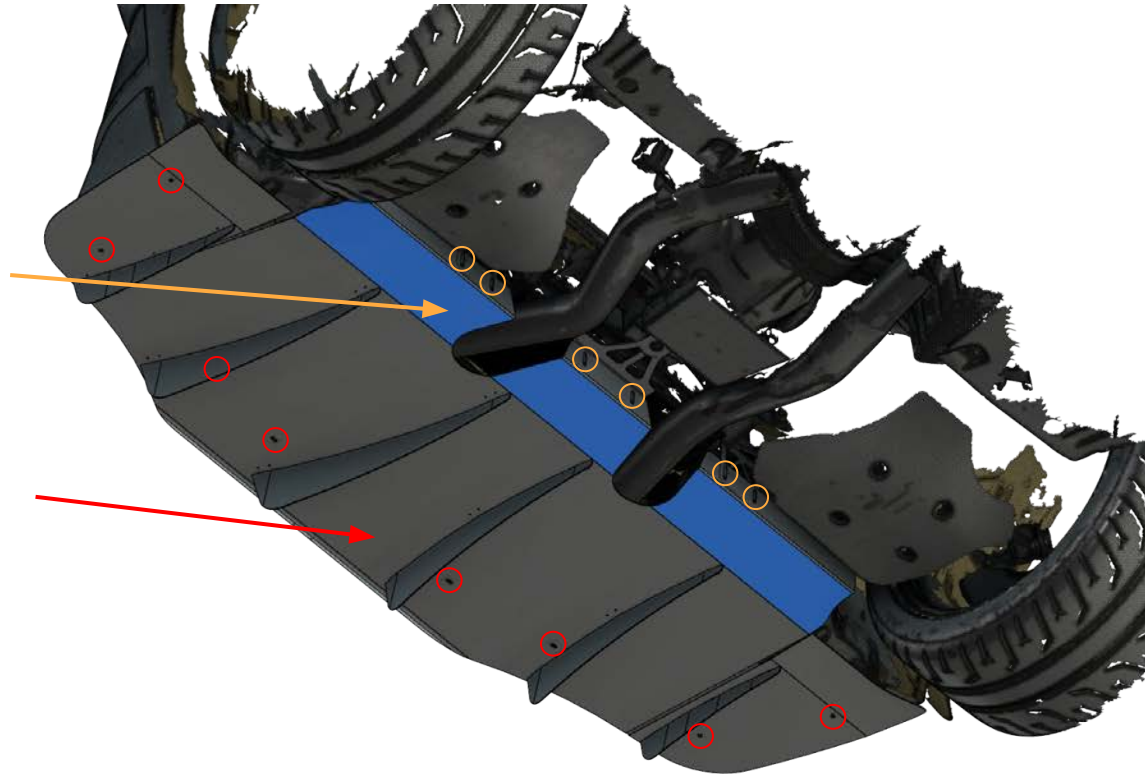


16. If the Diffuser will clear all parts of the exhaust at this stage, you can move on to steps 17-18 below. **If the Diffuser WILL NOT clear all parts of the exhaust at this stage, please refer to page 24 for instructions on installing the appropriate spacer kits.**

*The Diffuser should be installed at the highest point possible without making contact with the exhaust.*

17. Place a bubble level or digital angle finder on the forward “flat” portion of the main plane highlighted in **blue** to the right. This portion should be parallel to the ground both longitudinal and latitudinal. You can make fine adjustments to its position by utilizing the slots at the front side of the Diffuser. Once leveled appropriately, tighten the **6 bolts** to 6ft lbs.

18. If adjusted properly, the main body should measure roughly 9deg. Depending on the rake of the vehicle, this number can vary slightly. Tighten the **8 remaining diffuser bolts** to 6ft lbs to finish this installation.



**SPACER KIT REAR**

QTY	DESCRIPTION
4	M6 X 30MM BUTTON CAP BOLT
4	1/2" OD X 1/4" LG SPACER
4	3/4" OD X 1/2" LG SPACER

**SPACER KIT SIDE**

QTY	DESCRIPTION
4	M6 X 40MM BUTTON CAP BOLT
2	3/4" OD X 1/2" LG SPACER
2	3/4" OD X 5/8" LG SPACER
2	3/4" OD X 3/4" LG SPACER
2	3/4" OD X 1" LG SPACER

**SPACER KIT**

If your Diffuser is making contact with your exhaust, you can utilize the two options within the spacer kits to avoid this.

Option 1: Use the M6 X 30MM Bolts and **1/2" OD X 1/4" LG SPACERS** at the rear in combination with the M6 X 40MM Bolts, **3/4" OD X 1/2" LG SPACER**, and **3/4" OD X 5/8" LG SPACER** on the sides.

Option 2: Use the M6 X 30MM Bolts and **3/4" OD X 1/2" LG SPACERS** at the rear in combination with the M6 X 40MM Bolts, **3/4" OD X 3/4" LG SPACER**, and **3/4" OD X 1" LG SPACER** on the sides.

Refer to steps 17-18 on page 23 to properly adjust angle and complete your installation.

*NOTE: All hardware in this step should be installed with medium thread lock. The Spacers install in between the Diffuser and Bumper. The Diffuser should be installed at the highest point possible without making contact with the exhaust.*

