



**ONE
SOLUTION
INFINITE
POSSIBILITIES**

PHOTOUSA

PRODUCT CATALOG



Founded in 1992, Photo USA, Corporation has since grown to become the leading sublimation supplier in the United States. The company is best known for manufacturing sublimation coated ceramic products and substrates. In addition, Photo USA supplies the industry with stainless steel, aluminum, glass, and fabric substrates as well as sublimation equipment and supplies.

Photo USA is headquartered in Silicon Valley in beautiful Northern California. The new 87,000 square foot facility in Fremont, California houses our management, sales, marketing, production, and shipping teams. All our sublimation products are sourced from Beijing, China, which is key to developing high-quality products and maintaining industry-leading prices.

Why Choose Photo USA?

- › Trustworthy leading dye-sublimation brand with over 23 years of experience in the industry.
- › Our patented ORCA Coatings® ensures vivid top-quality images and printing.
- › High-quality, consistent sublimation products, backed by responsive and reliable domestic services from our US headquarters.
- › Photo USA's global manufacturing plants are the key to its competitive market leader prices.
- › Provides sophisticated imprinting services as a trusted specialty advertising source.

For more information regarding product blanks, heat presses, accessories, or high-quality decorating services, please call us toll-free at (800) 996-6022. Office visits by appointment only.

Thank you for your continued support,

The Photo USA Team

WEBSITE	www.photomugs.com
EMAIL	sales@photomugs.com
FAX	408 735 9908
TOLL FREE	800 996 6022



_DRINKWARE

- 06 ORCA CERAMIC MUGS
- 08 COLOR CHANGING MUGS
- 09 SHOT GLASSES
- 10 ORCA 2-TONE INNER CERAMIC MUGS
- 11 ORCA 2-TONE RIM & HANDLE CERAMIC MUGS
- 12 ORCA 2-TONE INNER & HANDLE CERAMIC MUGS
- 13 BEER STEINS | BEER GLASSES | METALLIC MUGS
- 14 ORCA DOUBLE WALLED TUMBLER
- 15 ORCA THERMAL TUMBLERS
- 16 TRAVEL MUGS | WATER BOTTLES
- 17 TUMBLERS | LATTES

_MOBILE DEVICES

- 19 IPHONE CASES
- 22 IPAD CASES
- 24 GALAXY CASES
- 25 LAPTOP SLEEVES

_HOME AND OFFICE

- 26 CERAMIC ORNAMENTS
- 28 WALLETS
- 31 KEY CHAINS
- 32 KEY RINGS
- 33 NECKTIES | PUZZLES | FLAGS
- 34 CERAMIC TILES
- 35 PHOTO SLATES | JEWELRY BOXES
- 36 COMPACT MIRRORS
- 37 CUTTING BOARDS | MOUSE PADS
- 38 COASTERS | NOTEPADS | FLEECE BLANKET | CAR SHADE
- 39 CAR MATS | COMFORT MATS
- 40 WINE TOTES | PET BOWLS | PLATES | CERAMIC VASES
- 41 FLIP FLOPS | COOKIE JARS

_HEAT PRESSES & SUPPLIES

- 43 MULTI-FUNCTIONAL HEAT PRESS
- 44 MINI MUG PRESS
- 45 ALL IN ONE PRESS
- 46 HEATING ELEMENTS
- 47 ACCESSORIES

= New Products

Why PHOTO USA?

Photo USA is a leading dye-sublimation supplier in the United States and has been in business since 1992. Our patented technology produces colorful, crystal clear images on a wide range of products. Finished products with the will not fade, even over time or after multiple cycles through a dishwasher.

For over 23 years, our company's global manufacturing plants have provided superior lines of products while significantly lowering the cost to customers. Photo USA has built long-lasting relationships with the top distributors and resellers in the US by serving every need of their business with the highest quality products, the most competitive prices, professional and responsive customer support, quick turnaround times, and industry leading expertise.

What do I need to begin producing customized products?

Specially coated sublimation ready blanks

All of the products we offer in our catalog are specifically designed and coated with our ORCA coatings®. This includes ceramic mugs, stainless steel travel mugs, glass cutting boards, polymer phone cases, and many more. Photo USA offers over 500 unique products to choose from.

Heat and pressure

With heat and pressure, you can transfer images printed from your sublimation printer directly to the sublimation ready products. We provide four different types of presses to help bring your photos, art, and images to life. We also offer high quality heat conductive rubber wraps that can be used in an oven. Please call for more information.

Sublimation capable printer

Epson and Ricoh printers work very well for sublimation. Photo USA only supplies printers only in starter kits. Please call for more information.

Sublimation ink

This special ink is available in cartridges and continuous ink systems. Photo USA does not sell sublimation ink. Please call for more information.

Why Sublimation?

Sublimation offers the ability to create low cost, high quality products ranging from ceramic mugs to stainless steel water bottles to full wrap phone cases. Sublimation allows you to create personalized products with higher resolutions and more colors than other methods, resulting in an amazingly vivid product. Sublimation is perfect for true individual personalization because of the lower minimum quantities and effectiveness in smaller, on demand custom production runs.

What is Sublimation?

Dye-sublimation refers to the chemical process of transferring the dye (or ink) from one medium to another medium. This is done by printing an image with a sublimation printer with sublimation ink, properly placing the printout on your specially coated sublimation product, and then applying pressure and heat to transfer the ink onto the product.

For more information, please call us or visit our website.

Will any ceramic or metal product work with sublimation?

No. Our sublimation products have special coating that is unique to our company and the sublimation process. When the ink on the transfer paper is heated to a specific temperature it will begin to evaporate from the paper and adhere onto the coating. Without the special coating, the sublimation ink will not adhere to the product.

Are your products dishwasher safe?

Products that use our specially engineered coating are considered dishwasher and microwave safe, unless the drinkware or product is constructed of metal. Please look for the ORCA in the product name and ORCA Coatings® logo on the product.

How do I create a finished product?

1. Take a picture, design a graphic or enhance an existing photograph using professional computer graphics software such as Adobe Photoshop, Adobe Illustrator, or CorelDraw. Format the size to fit the intended substrate.
2. Print the designed image (image is usually mirrored) to an inkjet sublimation capable printer that uses special dye-sublimation inks on dye-sublimation paper.
3. Attach the printed page securely onto the chosen sublimation-ready product with special heat tape.
4. Take the combined product and sublimation print that's securely taped on and apply heat and pressure with a heat press or heat conductive rubber wrap. For the best results, use the optimal pressure and time for each product on our website. As far as pressure applied, medium pressure is usually standard (30-40 psi).
5. After the time alarm on the machine sounds, remove the product, carefully tear away the transfer paper and check the quality of the image. Set aside for cooling. The product is now ready for sale.

The ORCA Promise

Photo USA's proprietary ORCA Coatings® ensures exceptionally vibrant colors and high resolutions on a wide range of sublimation products, ranging from ceramic mugs to full-wrap polymer phone cases.

Our ORCA Coatings® was developed with a devotion to the highest standard of product quality. Using our 23 years of industry-leading experience, we engineered a coating that has surpassed all others in terms of quality, consistency, and durability.

Products coated with our ORCA Coatings® are dishwasher-safe, microwave-safe, and incredibly long-lasting. This means that the colors of your image will not fade from the product even after multiple cycles through a dishwasher! All of our coatings are also approved by the FDA and compliant with Proposition 65.

With our ORCA coated products, we are confident that we have the best quality product in the industry at the best price. With Photo USA and our ORCA Coatings®, you will receive exactly what you deserve: the best.





21108-8

11 oz ORCA Ceramic Mug

- High gloss, extreme white finish
- Top-to-bottom, close-to-handle decoration
- ORCA Coatings®, dishwasher and microwave safe

Size (h x od) 3.7" x 3.2"
 Imprint Area 8.43" x 3.82"
 Heat Temp & Time mug press: 360°f, 60s
 Pack Case / Weight 36 / 30 lbs



20380

3 oz ORCA Ceramic Mug

- Great for kids and novelty events
- Top-to-bottom, close-to-handle decoration
- ORCA Coatings®, dishwasher and microwave safe

Size (h x od) 2.625" x 2.0"
 Imprint Area 5" x 2.625"
 Heat Temp & Time oven: 400°f, 480s
 Pack Case / Weight 72 / 23 lbs



21401-1

14 oz ORCA Ceramic Statesman Mug

- Stylized ear-shaped handle
- Great for restaurant and destination promotions
- Bright white surface produces vibrant image

Size (h x od) 4.8" x 3.4"
 Imprint Area 8.42" x 4.88"
 Heat Temp & Time mug press: 360°f, 60s
 Pack Case / Weight 36 / 44 lbs



21145-1

11 oz Black Ceramic Mug w/ White Patch

- Glossy black finish with smooth C-handle
- Imprint on a black mug to enhance any brand
- ORCA Coatings®, dishwasher and microwave safe

Size (h x od) 3.8" x 3.3"
 Imprint Area 8.43" x 3.82"
 Heat Temp & Time mug press: 360°f, 60s
 Pack Case / Weight 36 / 33 lbs



21504

15 oz ORCA Ceramic Mug

- Top seller
- Top-to-bottom, close-to-handle decoration
- ORCA Coatings®, dishwasher and microwave safe

Size (h x od) 4.5" x 3.4"
 Imprint Area 8.25" x 3.866"
 Heat Temp & Time mug press: 360°f, 60s
 Pack Case / Weight 36 / 40 lbs



20601-1

6 oz ORCA Ceramic Mug

- Espresso, coffee, tea, or juice friendly
- Top-to-bottom, close-to-handle decoration
- ORCA Coatings®, dishwasher and microwave safe

Size (h x od) 2.9" x 2.8"
 Imprint Area 7.55" x 3.2"
 Heat Temp & Time oven: 400°f, 480s
 Pack Case / Weight 48 / 26 lbs



22010

20 oz ORCA Ceramic Mug

- Tea, soup, or cereal friendly
- Extra large decoration area
- ORCA Coatings®, dishwasher and microwave safe

Size (h x od) 4.5" x 3.9"
 Imprint Area 10" x 4.6"
 Heat Temp & Time oven: 400°f, 12min
 Pack Case / Weight 24 / 38 lbs



21530-1

15 oz Black Ceramic Mug w/ White Patch

- Glossy black finish with smooth C-handle
- Imprint on a black mug to enhance any brand
- ORCA Coatings®, dishwasher and microwave safe

Size (h x od) 4.5" x 3.4"
 Imprint Area 8.25" x 3.866"
 Heat Temp & Time mug press: 360°f, 60s
 Pack Case / Weight 36 / 40 lbs



21010

10 oz ORCA Ceramic Mug

- Cone-shaped with ear-shaped handle
- Image reproduction vibrant on white finish
- ORCA Coatings®, dishwasher and microwave safe

Size (h x od) 5.9" x 3.5"
 Imprint Area 9.75" x 6.5"
 Heat Temp & Time mug press: 360°f, 60s
 Pack Case / Weight 24 / 28 lbs



21002-1

10 oz ORCA Frosted Glass Mug

- Subtle semi-transparent image reproduction
- Great for restaurant and destination promotions
- ORCA Coatings®, dishwasher and microwave safe

Size (h x od) 3.85" x 3.2"
 Imprint Area 8.057" x 3.86"
 Heat Temp & Time mug press: 360°f, 60s
 Pack Case / Weight 36 / 32 lbs



21150

11 oz Black Color Changing Ceramic Mug*

- Add hot liquid to reveal underlying image
- Novelty advertising and business promotion
- Top-to-bottom, close to handle decoration

Size (h x od)	3.8" x 3.2"
Imprint Area	8.43" x 3.82"
Heat Temp & Time	mug press: 360°f, 60s
Pack Case / Weight	36 / 33 lbs



21550

15 oz Black Color Changing Ceramic Mug*

- Add hot liquid to reveal underlying image
- Novelty advertising and business promotion
- Comfortable handle design

Size (h x od)	4.5" x 3.4"
Imprint Area	8.25" x 3.86"
Heat Temp & Time	mug press: 360°f, 60s
Pack Case / Weight	36 / 40 lbs



21156

11 oz Matte Black Color Changing Ceramic Mug*

- Add hot liquid to reveal underlying image
- Novelty advertising and business promotion
- Comfortable handle design

Size (h x od)	4.5" x 3.4"
Imprint Area	8.25" x 3.86"
Heat Temp & Time	mug press: 360°f, 60s
Pack Case / Weight	36 / 40 lbs



20360

1.5 oz Ceramic Shot Glass

- Full wrap decoration
- Standard size and weight
- Comes in white for vibrant color

Size (h x od)	2.5" x 2.0"
Imprint Area	6.61" x 3.16"
Heat Temp & Time	oven: 400°f, 480s
Pack Case / Weight	120 / 26 lbs



21750

17 oz Black Color Changing Ceramic Mug*

- Add hot liquid to reveal underlying image
- Cone-shaped mug with ear-shaped handle
- Designed with our patented process

Size (h x od)	5.9" x 3.5"
Imprint Area	9.75" x 6.5"
Heat Temp & Time	mug press: 360°f, 60s
Pack Case / Weight	24 / 31 lbs



20361

1.5 oz Ceramic Shot Glass

- Full wrap decoration
- Standard size and weight
- Black rim & interior

Size (h x od)	2.5" x 2.0"
Imprint Area	6.61" x 3.16"
Heat Temp & Time	oven: 400°f, 480s
Pack Case / Weight	120 / 26 lbs

The classic shot glass features a gold painted rim. A full color image can be applied to the white sublimation patch. Featuring our ORCA dye-sublimation coating, this shot glass is dishwasher-safe.

Made from high quality ceramic, our 1.5 oz ceramic shot glass offers the largest imprint area out of any other standard shot glass on the market.

SHOT GLASSES

COLOR CHANGING MUGS

Uncover personalized images with this magic mug using hot liquid. Premium coating ensure underlying image is displayed with vivid colors when heated.

This product is excellent for daily use and for bringing surprises to the ones you love and care for. Available in different sizes and shapes, this unique mug is available with either a black or blue exterior.



21151

11 oz Blue Color Changing Ceramic Mug*

- Add hot liquid to reveal underlying image
- Novelty advertising and business promotion
- Top-to-bottom, close to handle decoration

Size (h x od)	3.8" x 3.2"
Imprint Area	8.43" x 3.82"
Heat Temp & Time	mug press: 360°f, 60s
Pack Case / Weight	36 / 33 lbs



20301

1.5 oz Shot Glass

- Decoratable white patch
- Standard size and weight
- Gold rim accent

Size (h x od)	2.3" x 2.0"
Imprint Area	6.61" x 3.16"
Heat Temp & Time	oven: 400°f, 480s
Pack Case / Weight	120 / 28 lbs



20300

1.5 oz Shot Glass w/ Gold Rim

- Decoratable white patch
- Standard size and weight
- Gold rim accent

Size (h x od)	2.3" x 2.0"
Imprint Area	6.61" x 3.16"
Heat Temp & Time	oven: 400°f, 480s
Pack Case / Weight	120 / 28 lbs



20400

2 oz Shot Glass w/ Gold Rim

- Decoratable white patch
- Standard size and weight
- Gold rim accent

Size (h x od)	4" x 1.6"
Imprint Area	4.8" x 3.3"
Heat Temp & Time	oven: 400°f, 480s
Pack Case / Weight	120 / 35 lbs

*U.S. Patent # 6,281,165; 6,759,099; 6,902,775; 7,166,333



21110-1 / 21120-1

11 oz ORCA 2-Tone Inner Mug

- Features colored rim and interior of mug
- Top-to-bottom, close-to-handle decoration
- ORCA Coating®, dishwasher and microwave safe

Size (h x od) 3.8" x 3.2"
 Imprint Area 8.43" x 3.82"
 Heat Temp & Time mug press: 360°f, 60s
 Pack Case / Weight 36 / 33 lbs

21511-1 / 21517-1

15 oz ORCA 2-Tone Inner Mug

- Features colored rim and interior of mug
- PMS matching colors for wide variety of promotions
- ORCA Coatings®, dishwasher and microwave safe

Size (h x od) 4.5" x 3.4"
 Imprint Area 8.25" x 3.86"
 Heat Temp & Time mug press: 360°f, 60s
 Pack Case / Weight 36 / 40 lbs



21121-1 / 21131-1

11 oz ORCA 2-Tone Rim & Handle Mug

- Features colored rim and handle of mug
- Top-to-bottom, close-to-handle decoration
- ORCA Coatings®, dishwasher and microwave safe

Size (h x od) 3.8" x 3.2"
 Imprint Area 8.43" x 3.82"
 Heat Temp & Time mug press: 360°f, 60s
 Pack Case / Weight 36 / 33 lbs

21521-1 / 21527-1

15 oz ORCA 2-Tone Rim & Handle Mug

- Features colored rim and handle of mug
- PMS matching colors for wide variety of promotions
- ORCA Coatings®, dishwasher and microwave safe

Size (h x od) 4.5" x 3.4"
 Imprint Area 8.25" x 3.86"
 Heat Temp & Time mug press: 360°f, 60s
 Pack Case / Weight 36 / 40 lbs

PANTONE®
 Matching System (PMS) Equivalents SKU & corresponding PMS color.



PANTONE®
 Matching System (PMS) Equivalents SKU & corresponding PMS color.





21132-1

11 oz ORCA 2-Tone Inner & Handle Mug

- Features colored rim, handle and interior of mug
- Top-to-bottom, close-to-handle decoration
- ORCA Coatings®, dishwasher and microwave safe

Size (h x od)	3.8" x 3.2"
Imprint Area	8.43" x 3.82"
Heat Temp & Time	mug press: 360°F, 60s
Pack Case / Weight	36 / 33 lbs

21511-1

15 oz ORCA 2-Tone Inner & Handle Mug

- Features colored rim and interior of mug
- PMS matching colors for wide variety of promotions
- ORCA Coatings®, dishwasher and microwave safe

Size (h x od)	4.5" x 3.4"
Imprint Area	8.25" x 3.86"
Heat Temp & Time	mug press: 360°F, 60s
Pack Case / Weight	36 / 40 lbs

PANTONE®

Matching System (PMS) Equivalents SKU & corresponding PMS color.



22210

22 oz ORCA Beer Stein w/ Gold Trim

- Gold trim, German-style detail
- Image reproduction vibrant on white finish
- ORCA Coatings®, Dishwasher safe

Size (h x od)	6.6" x 3.0"
Imprint Area	8.38" x 3.46"
Heat Temp & Time	oven: 400°F, 12 min
Pack Case / Weight	18 / 30 lbs



22216

22 oz ORCA Beer Stein Grey w/ Blue Trim

- Blue trim, German-style detail
- Great for Logos
- ORCA Coatings®, Dishwasher safe

Size (h x od)	6.6" x 3.0"
Imprint Area	8.38" x 3.46"
Heat Temp & Time	oven: 400°F, 12 min
Pack Case / Weight	18 / 30 lbs



22217

22 oz ORCA Beer Stein w/ Gold Trim

- Gold trim with 'D' shaped handle
- Image reproduction vibrant on white finish
- ORCA Coatings®, Dishwasher safe

Size (h x od)	5.75" x 3.5"
Imprint Area	9" x 3"
Heat Temp & Time	oven: 400°F, 12 min
Pack Case / Weight	18 / 32 lbs



21166

11 oz Bronze Ceramic Mug

- Features bronze metallic exterior
- Great for sparkling promotions
- ORCA Coatings®, dishwasher and microwave safe

Size (h x od)	3.7" x 3.2"
Imprint Area	8.43" x 3.82"
Heat Temp & Time	mug press: 360°F, 60s
Pack Case / Weight	36 / 30 lbs



21168

11 oz Silver Ceramic Mug

- Features silver metallic exterior
- Great for sparkling promotions
- ORCA Coatings®, dishwasher and microwave safe

Size (h x od)	3.7" x 3.2"
Imprint Area	8.43" x 3.82"
Heat Temp & Time	mug press: 360°F, 60s
Pack Case / Weight	36 / 30 lbs



21197

11 oz 2-piece Lover's Mug Ceramic Set

- Weddings, anniversaries, and friendship gifts
- Match up the two decoration areas
- Ships in individual gift boxes

Size (h x od)	3.7" x 3.2" (each mug)
Imprint Area	8.43" x 3.82"
Heat Temp & Time	mug press: 360°F, 60s
Pack Case / Weight	18 / 30 lbs



21002-1

10 oz ORCA Frosted Glass Mug

- Subtle semi-transparent image reproduction
- Great for restaurant and destination promotions
- ORCA Coatings®, dishwasher and microwave safe

Size (h x od)	3.85" x 3.2"
Imprint Area	8.057" x 3.86"
Heat Temp & Time	mu press: 360°F, 60s
Pack Case / Weight	36 / 32 lbs



21618

16 oz ORCA Frosted Glass Stein

- Simulated front texture outside, clear inside
- D-handle with thumb rest
- ORCA Coatings®, subtle image reproduction

Size (h x od)	6.0" x 3.2"
Imprint Area	7.78" x 3.65"
Heat Temp & Time	mug press: 360°F, 60s
Pack Case / Weight	24 / 41 lbs



94424 11 oz 95524 15 oz

Mug Gift Box White

- Cardboard, ships flattened

11oz - Size (h x w x d)	4" x 4" x 4"
Pack Case / Weight	144 / 12 lbs

15 oz - Size (h x w x d)	4.75" x 3.5" x 4.5"
Pack Case / Weight	144 / 12 lbs



16 oz ORCA Stainless Steel Thermal Travel Mug - White/Silver

Our stainless steel ORCA Thermos is fingerprint resistant to maintain its flawless brushed finish. The patented coating delivers durable and vivid color.

The double-wall construction and spill/leak resistant screw cap keeps your hot beverage hot for 6 hours, while chilling your cold drink for up to 10 hours.

The proprietary ORCA Thermos polypropylene screw cap features dual built-in handles and leak resistant plug.



21626

16 oz ORCA Stainless Steel Thermal Travel Mug-White

- High-grade stainless steel double-wall construction
- Insulated for hot or cold liquids
- Lid features hinged carrying handle and spout seal
- Dishwasher safe

Size (h x od) 7.5" x 3.4" (tapers to 2.75")
 Imprint Area 10" x 5.5"
 Heat Temp & Time oven: 360°F, 4-6 min
 Pack Case / Weight 24 / 23 lbs

21628

16 oz Orca Stainless Steel Thermal Travel Mug-Silver

- High-grade stainless steel double-wall construction
- Insulated for hot or cold liquids
- Lid features hinged carrying handle and spout seal
- Dishwasher safe

Size (h x od) 7.5" x 3.4" (tapers to 2.75")
 Imprint Area 10" x 5.5"
 Heat Temp & Time oven: 360°F, 4-6 min
 Pack Case / Weight 24 / 23 lbs



21622

16 oz ORCA Stainless Steel Tall Tube Thermal Tumbler

21623

20 oz ORCA Stainless Steel Tall Tube Thermal Tumbler

- Flip-top cover protects easy drink spout
- Subtle Image reproduction
- ORCA Coatings®

Size (h x od) 8.5" x 2.9"
 Imprint Area 7.94" x 4.86"
 Heat Temp & Time mug press: 340°F, 8-10s
 Pack Case / Weight 48 / 23 lbs



21701 Small 21700 Large

Stainless Steel Can with Flip Top - White

- Full coverage with glossy finish
- Great for branding and promotions
- Straw-top pivots to seal

Size (h x w) small 4.72" x 2.83"
 Size (h x w) large 7.48" x 2.83"



21703 Small 21702 Large

Stainless Steel Can with Flip Top - Silver

- Full coverage with glossy finish
- Great for branding and promotions
- Straw-top pivots to seal

Size (h x w) small 4.72" x 2.83"
 Size (h x w) large 7.48" x 2.83"



16 oz ORCA Insulated Bottles

Our 16 oz insulated water bottle keeps your beverage at a perfect temperature in any weather. The twist off cap and 304 grade stainless steel guarantee that it's durable enough for everyday use.

Our patented coating provides for bright colors and the silver steel bottom prevents any designs from bleeding over. With a sleek design, this bottle fits into any standard size cupholder and makes for a unique and useful gift.

21359

16 oz ORCA Insulated Bottles - White

- High-grade stainless steel double-wall construction
- Insulated for hot or cold liquids
- Patented ORCA coating for vibrant color

Size (h x od) 10.5" x 2.85" (tapers to 1.55")
 Imprint Area 4" x 8.75"
 Pack Case / Weight 48 / 35 lbs



21482-1
14 oz ORCA Stainless Steel Travel Mug - White patch

- High grade stainless steel construction
- Friction lid , swivel spout, and comfort handle
- White patch produces vibrant image

Size (h x od)	6.1" x 3.375"
Imprint Area	8.25" x 3.0"
Heat Temp & Time	mug press: 360°f, 60s
Pack Case / Weight	24 / 16 lbs



21480-1
14 oz ORCA Stainless Steel Travel Mug - Silver

- High grade stainless steel construction
- Friction lid , swivel spout, and comfort handle
- Subtle image reproduction

Size (h x od)	6.1" x 3.375"
Imprint Area	8.25" x 3.0"
Heat Temp & Time	mug press: 360°f, 60s
Pack Case / Weight	24 / 16 lbs



21483-1
14 oz ORCA Stainless Steel Travel Mug - White

- High grade stainless steel construction
- Friction lid , swivel spout, and comfort handle
- Image reproduction vibrant on white finish

Size (h x od)	6.2" x 3.375"
Imprint Area	8.25" x 3.0"
Heat Temp & Time	mug press: 360°f, 60s
Pack Case / Weight	24 / 16 lbs



21216
12 oz ORCA Eco Traveler

- Flip-top cover protects easy drink spout
- Friction lid , swivel spout, and comfort handle
- Image reproduction vibrant on white finish

Size (h x od)	6" x 3.625"
Imprint Area	call for info



21660
16 oz ORCA Ceramic Latte Mug

- Cone-shaped with ear-shaped handle
- Subtle Image reproduction
- ORCA Coatings®, dishwasher and microwave safe

Size (h x od)	8.5" x 2.9"
Imprint Area	7.94" x 4.86"
Heat Temp & Time	mug press: 340°f, 8-10s
Pack Case / Weight	48 / 23 lbs



21211
12 oz ORCA Ceramic Latte Mug

- Cone-shaped with ear-shaped handle
- Image reproduction vibrant on white finish
- ORCA Coatings®, dishwasher and microwave safe

Size (h x od)	4" h x 3.7" od
Imprint Area	9.95" x 4.71"
Heat Temp & Time	mug press:360°f, 60s
Pack Case / Weight	36 / 29 lbs



21484
14 oz Economy Stainless Steel Travel Mug - Silver

- Stainless steel, disassemble for decoration
- Screw-top lid , sliding spout, and comfort handle
- Subtle Image reproduction

Size (h x od)	6.2" x 3.375"
Imprint Area	8.25" x 3.0"
Heat Temp & Time	mug press: 360°f, 60s
Pack Case / Weight	24 / 16 lbs



23621
20 oz Stainless Steel Straw-top Water Bottle -Silver

- Best seller
- Subtle image reproduction
- Straw-top pivots to seal

Size (h x od)	7.2" x 2.9"
Imprint Area	7.94" x 4.86"
Heat Temp & Time	mug press: 340°f, 8-10s
Pack Case / Weight	48 / 23 lbs



23601
17 oz Aluminum Water Bottle - Silver

- Flip-top cover protects easy drink spout
- Subtle Image reproduction
- Carabiner (colors may vary)

Size (h x od)	8.5" x 2.9"
Imprint Area	7.94" x 4.86"
Heat Temp & Time	mug press: 340°f, 8-10s
Pack Case / Weight	48 / 23 lbs



21013
10 oz ORCA Porcelain Eco-Tumbler

- Double-walled insulation, white silicone lid
- Cone-shape; 360° decoration area
- ORCA Coatings®, dishwasher and microwave safe

Size (h x od)	5.4" x 3.6" od x 2.25" od ²
Imprint Area	9.26" x 3.256"
Heat Temp & Time	mug press: 360°f, 60s
Pack Case / Weight	12 / 15.3 lbs



21763
17 oz Pint Glass w/ White Patch

- Decoratable white patch (small gap)
- Standard size and weight
- Bright white patch produces vibrant image

Size (h x od)	5.8" x 3.4"
Imprint Area	10.52" x 5.74"
Heat Temp & Time	mug press: 365°f, 110s
Pack Case / Weight	36 / 33 lbs



21716
17 oz ORCA Ceramic Latte Mug

- Cone-shaped with ear-shaped handle
- Image reproduction vibrant on white finish
- ORCA Coatings®, dishwasher and microwave safe

Size (h x od)	5.9" x 3.5"
Imprint Area	9.75" x 6.5"
Heat Temp & Time	mug press: 360°f, 60s
Pack Case / Weight	24 / 28 lbs



21485
14 oz Economy Stainless Steel Travel Mug - Silver

- Stainless steel, disassemble for decoration
- Screw-top lid , sliding spout, and comfort handle
- Vibrant Image reproduction

Size (h x od)	6.2" x 3.375"
Imprint Area	8.25" x 3.0"
Heat Temp & Time	mug press: 360°f, 60s
Pack Case / Weight	24 / 16 lbs



23622
20 oz Stainless Steel Straw-top Water Bottle - White

- Best seller
- Vibrant image reproduction
- Straw-top pivots to seal

Size (h x od)	7.2" x 2.9" o
Imprint Area	7.94" x 4.86"
Heat Temp & Time	mug press: 340°f, 8-10s
Pack Case / Weight	48 / 23 lbs



23600
17 oz Aluminum Water Bottle - White

- Flip-top cover protects easy drink spout
- Vibrant Image reproduction
- Carabiner (colors may vary)

Size (h x od)	8.5" h x 2.9"
Imprint Area	7.94" x 4.86"
Heat Temp & Time	mug press: 340°f, 8-10s
Pack Case / Weight	48 / 23 lbs



23663
20 oz Stainless Steel Water Bottle - White

- White finish produces vibrant image
- Screw top with carabiner

Size (h x od)	7.4" x 2.9"
Imprint Area	7.94" x 4.86"
Heat Temp & Time	mug press: 340°f, 8-10s
Pack Case / Weight	48 / 23 lbs



21214
12 oz Double-wall Beer Glass w/ Patch

- Handmade upside-down novelty beer glass
- Keeps drinks cold longer
- High temperature Vycor glass

Size (h x od)	8.3125" x 3.54"
Imprint Area	10.875" x 2.75"
Heat Temp & Time	oven: call
Pack Case / Weight	call



73428

iPhone 7 Plus 3D Polymer Case - Glossy

- Lightweight and slim profile
- Impact resistant durable polymer
- Access to all ports and controls

Size (h x w x d) 6.21" x 3.18" x .33"
 Imprint Area 6.76" x 4.01"
 Pack Case / Weight 400 / 21 lbs

73429

iPhone 7 Plus 3D Polymer Case - Matte

- Lightweight and slim profile / anti-reflective
- Impact resistant durable polymer
- Access to all ports and controls

Size (h x w x d) 6.21" x 3.18" x .33"
 Imprint Area 6.76" x 4.01"
 Pack Case / Weight 400 / 21 lbs



73412

iPhone 6 Plus 3D Polymer Case - Glossy

- Lightweight and slim profile
- Impact resistant durable polymer
- Access to all ports and controls

Size (h x w x d) 6.21" x 3.18" x .33"
 Imprint Area 6.76" x 4.01"
 Pack Case / Weight 400 / 21 lbs

73413

iPhone 6 Plus 3D Polymer Case - Matte

- Lightweight and slim profile / anti-reflective
- Impact resistant durable polymer
- Access to all ports and controls

Size (h x w x d) 6.21" x 3.18" x .33"
 Imprint Area 6.76" x 4.01"
 Pack Case / Weight 400 / 21 lbs



73423

iPhone 7 3D Polymer Case - Glossy

- Lightweight and slim profile
- Impact resistant durable polymer
- Access to all ports and controls

Size (h x w x d) 5.48" x 2.75" x .34"
 Imprint Area 5.77" x 3.52"
 Pack Case / Weight 400 / 21 lbs

73424

iPhone 7 3D Polymer Case - Matte

- Lightweight and slim profile / anti-reflective
- Impact resistant durable polymer
- Access to all ports and controls

Size (h x w x d) 5.48" x 2.75" x .34"
 Imprint Area 5.77" x 3.52"
 Pack Case / Weight 400 / 21 lbs



73406

iPhone 6 3D Polymer Case - Glossy

- Lightweight and slim profile
- Impact resistant durable polymer
- Access to all ports and controls

Size (h x w x d) 5.48" x 2.75" x .34"
 Imprint Area 5.77" x 3.52"
 Pack Case / Weight 400 / 21 lbs

73407

iPhone 6 3D Polymer Case - Matte

- Lightweight and slim profile / anti-reflective
- Impact resistant durable polymer
- Access to all ports and controls

Size (h x w x d) 5.48" x 2.75" x .34"
 Imprint Area 5.77" x 3.52"
 Pack Case / Weight 400 / 21 lbs



73411

iPhone 6 Plus Hardshell Case - Clear

- Dye sublimation aluminum insert
- Impact resistant durable polycarbonate
- Access to all ports and controls

Size (h x w x d) 6.21" x 3.18" x .33"
 Imprint Area 6.0" x 2.85"
 Pack Case / Weight 360 / 22 lbs

73409

iPhone 6 Plus Hardshell Case - Black

- Dye sublimation aluminum insert
- Impact resistant durable polycarbonate
- Access to all ports and controls

Size (h x w x d) 6.21" x 3.18" x .33"
 Imprint Area 6.0" x 2.85"
 Pack Case / Weight 360 / 22 lbs

73410

iPhone 6 Plus Hardshell Case - White

- Dye sublimation aluminum insert
- Impact resistant durable polycarbonate
- Access to all ports and controls

Size (h x w x d) 6.21" x 3.18" x .33"
 Imprint Area 6.0" x 2.85"
 Pack Case / Weight 360 / 22 lbs

73125

iPhone SE / 5 / 5s 3D Polymer Case - Glossy

- Full-wrap decoration with Vac-U-Press technology
- Anti-reflective durable Coating / Scratch Resistant
- Precision fit

Size (h x w x d) 5.01" x 2.42" x .352"
 Imprint Area 5.5" x 3.5"
 Pack Case / Weight 500 / 20 lbs

73126

iPhone SE / 5 / 5s 3D Polymer Case - Matte

- Full-wrap decoration with Vac-U-Press technology
- Anti-reflective durable Coating / Scratch Resistant
- Precision fit

Size (h x w x d) 5.01" x 2.42" x .352"
 Imprint Area 5.5" x 3.5"
 Pack Case / Weight 500 / 20 lbs



73405

iPhone 6 Hard Case - Clear

- Dye sublimation aluminum insert
- Impact resistant durable polycarbonate
- Access to all ports and controls

Size (h x w x d) 5.45" x 2.72" x .352"
 Imprint Area 5.13" x 2.33"
 Pack Case / Weight 360 / 22 lbs

73403

iPhone 6 Hardshell Case - Black

- Dye sublimation aluminum insert
- Impact resistant durable polycarbonate
- Access to all ports and controls

Size (h x w x d) 5.45" x 2.72" x .352"
 Imprint Area 5.13" x 2.33"
 Pack Case / Weight 360 / 22 lbs

73404

iPhone 6 Hard Case - White

- Dye sublimation aluminum insert
- Impact resistant durable polycarbonate
- Access to all ports and controls

Size (h x w x d) 5.45" x 2.72" x .352"
 Imprint Area 5.13" x 2.33"
 Pack Case / Weight 360 / 22 lbs

73127

iPhone 5c 3D Polymer Case - Matte

- Full-wrap decoration with Vac-U-Press technology
- Anti-reflective durable Coating / Scratch Resistant
- Precision fit

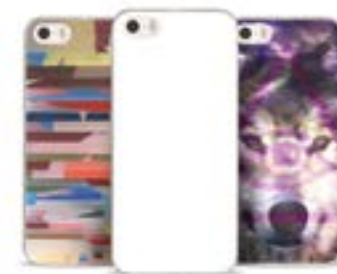
Size (h x w x d) 5.01" x 2.42" x .352"
 Imprint Area 5.5" x 3.5"
 Pack Case / Weight 500 / 20 lbs

73128

iPhone 5c 3D Polymer Case - Glossy

- Full-wrap decoration with Vac-U-Press technology
- Vivid image reproduction
- Precision fit

Size (h x w x d) 5.01" x 2.42" x .352"
 Imprint Area 5.5" x 3.5"
 Pack Case / Weight 500 / 20 lbs



73402

iPhone 6 Softshell Case - Clear

- Dye sublimation aluminum insert
- Soft thermoplastic polyurethane material
- Access to all ports and controls

Size (h x w x d) 5.45" x 2.72" x .352"
 Imprint Area 5.13" x 2.33"
 Pack Case / Weight 360 / 22 lbs

73400

iPhone 6 Softshell Case - Black

- Dye sublimation aluminum insert
- Soft thermoplastic polyurethane material
- Access to all ports and controls

Size (h x w x d) 5.45" x 2.72" x .352"
 Imprint Area 5.13" x 2.33"
 Pack Case / Weight 360 / 22 lbs

73401

iPhone 6 Softshell Case - White

- Dye sublimation aluminum insert
- Soft thermoplastic polyurethane material
- Access to all ports and controls

Size (h x w x d) 5.45" x 2.72" x .352"
 Imprint Area 5.13" x 2.33"
 Pack Case / Weight 360 / 22 lbs

73113

iPhone 5 / 5s Hard Case - Clear

- Sublimation metal insert
- Vivid image reproduction
- Precision fit

Size (h x w x d) 4.95" x 2.40" x 0.3"
 Imprint Area 5.125" x 2.575"
 Pack Case / Weight 360 / 20.2 lbs

73112

iPhone 5 / 5s Hardshell Case - Black

- Sublimation metal insert
- Vivid image reproduction
- Precision fit

Size (h x w x d) 4.95" x 2.40" x 0.3"
 Imprint Area 5.125" x 2.575"
 Pack Case / Weight 360 / 20.2 lbs

73114

iPhone 5 / 5s Hard Case - White

- Sublimation metal insert
- Vivid image reproduction
- Precision fit

Size (h x w x d) 4.95" x 2.40" x 0.3"
 Imprint Area 5.125" x 2.575"
 Pack Case / Weight 360 / 20.2 lbs



73218

iPad Air 3D Polymer Case - Matte

- Full-wrap decoration with Vac-U-Press technology
- Anti-reflective durable Coating / Scratch Resistant
- Precision fit

Size (h x w x d) 9.75" x 6.875" x .4"
 Imprint Area 10" x 7"
 Pack Case / Weight 100 / 28 lbs

73217

iPad Air 3D Polymer Case - Glossy

- Full-wrap decoration with Vac-U-Press technology
- Anti-reflective durable Coating / Scratch Resistant
- Precision fit

Size (h x w x d) 9.75" x 6.875" x .4"
 Imprint Area 10" x 7"
 Pack Case / Weight 100 / 28 lbs



73214

iPad 2 / 3 / 4 3D Polymer Case - Matte

- Full-wrap decoration with Vac-U-Press technology
- Rubber lined case for protection
- Precision fit

Size (h x w x d) 9.625" x 7.375" x .375"
 Imprint Area 10.125" x 7.875"
 Pack Case / Weight 100 / 28 lbs

73215

iPad 2 / 3 / 4 3D Polymer Case - Glossy

- Full-wrap decoration with Vac-U-Press technology
- Rubber lined case for protection
- Precision fit

Size (h x w x d) 9.625" x 7.375" x .375"
 Imprint Area 10.125" x 7.875"
 Pack Case / Weight 100 / 28 lbs



73200

iPad 2 Hardshell Case - Clear

- High-quality cover provides a secure fit for the iPad 2
- Sublimation metal insert
- Vivid image reproduction

Size (h x w x d) 8.375" x 6.25" x .4"
 Imprint Area 8.0" x 6.0"
 Pack Case / Weight 150 / 25 lbs

73201

iPad 2 Hardshell Case - White

- High-quality cover provides a secure fit for the iPad 2
- Sublimation metal insert
- Vivid image reproduction

Size (h x w x d) 8.375" x 6.25" x .4"
 Imprint Area 8.0" x 6.0"
 Pack Case / Weight 150 / 25 lbs

73202

iPad 2 Hardshell Case - Black

- High-quality cover provides a secure fit for the iPad 2
- Sublimation metal insert
- Vivid image reproduction

Size (h x w x d) 8.375" x 6.25" x .4"
 Imprint Area 8.0" x 6.0"
 Pack Case / Weight 150 / 25 lbs



73301

7" Kindle Fire Hard Cover - White

- High-quality cover provides a secure fit
- Sublimation metal insert
- Vivid image reproduction

Size (h x w x d) 7.5" x 4.75" x .625"
 Imprint Area 7.75" x 4.25"
 Pack Case / Weight 72 / 14 lbs

73300

7" Kindle Fire Hard Cover - Black

- High-quality cover provides a secure fit
- Sublimation metal insert
- Vivid image reproduction

Size (h x w x d) 7.5" x 4.75" x .625"
 Imprint Area 7.75" x 4.25"
 Pack Case / Weight 72 / 14 lbs

73306

7" Leatherette Kindle Fire Cover - Black

- Soft cover provides a snug fit
- Decorate on front cover
- Vivid image reproduction

Size (h x w x d) 8" x 5.375" x .75"
 Imprint Area 8.15" x 5.525"
 Pack Case / Weight 50 / 12 lbs



73290

iPad Mini 3D Polymer Case - Glossy

- Full-wrap decoration with Vac-U-Press technology
- Durable Coating / Scratch Resistant
- Precision fit

Size (h x w x d) 9.75" x 6.875" x .4"
 Imprint Area 10" x 7"
 Pack Case / Weight 200 / 25 lbs

73291

iPad Mini 3D Polymer Case - Matte

- Full-wrap decoration with Vac-U-Press technology
- Anti-reflective durable Coating / Scratch Resistant
- Precision fit

Size (h x w x d) 9.75" x 6.875" x .4"
 Imprint Area 10" x 7"
 Pack Case / Weight 200 / 25 lbs



73174

Galaxy S5 3D Polymer Case - Matte

- Full-wrap decoration with Vac-U-Press technology
- Anti-reflective durable Coating / Scratch Resistant
- Precision fit

Size (h x w x d) call for info
 Imprint Area 3.9" x 6.52"
 Pack Case / Weight 400 / 16 lbs

73176

Galaxy S5 3D Polymer Case - Glossy

- Full-wrap decoration with Vac-U-Press technology
- Vivid image reproduction
- Precision fit

Size (h x w x d) call for info
 Imprint Area 3.9" x 6.52"
 Pack Case / Weight 400 / 16 lbs



72040

10" Neoprene Laptop Sleeve

- Formfitting with zippered closure
- Sublimation decoration on front face
- Vivid image reproduction

Size (h x w) 11.25" x 8.75"
 Imprint Area 11.5" x 9.25"
 Pack Case / Weight 50 / 24 lbs



72041

13" Neoprene Laptop Sleeve

- Formfitting with zippered closure
- Sublimation decoration on front face
- Vivid image reproduction

Size (h x w) 13.5" x 10.5"
 Imprint Area 13.75" x 10.75"
 Pack Case / Weight 50 / 28 lbs



73173

Galaxy S4 3D Polymer Case - Matte

- Full-wrap decoration with Vac-U-Press technology
- Anti-reflective durable Coating / Scratch Resistant
- Precision fit

Size (h x w x d) call for info
 Imprint Area 3.4375" x 5.375"
 Pack Case / Weight 400 / 16 lbs

73172

Galaxy S4 3D Polymer Case - Glossy

- Full-wrap decoration with Vac-U-Press technology
- Vivid image reproduction
- Precision fit

Size (h x w x d) call for info
 Imprint Area 3.4375" x 5.375"
 Pack Case / Weight 400 / 16 lbs



72042

15" Neoprene Laptop Sleeve

- Formfitting with zippered closure
- Sublimation decoration on front face
- Vivid image reproduction

Size (h x w) 14.5" x 11.25"
 Imprint Area 14.75" x 11.5"
 Pack Case / Weight 50 / 31 lbs



72043

17" Neoprene Laptop Sleeve

- Formfitting with zippered closure
- Sublimation decoration on front face
- Vivid image reproduction

Size (h x w) 16.4" x 13"
 Imprint Area 16.75" x 13.35"
 Pack Case / Weight 50 / 36 lbs



73195

Galaxy S4 Hardshell Case - Clear

- Sublimation metal insert
- Vivid image reproduction
- Precision fit

Size (h x w x d) 4.5" x 2.25" x 0.375"
 Imprint Area 4.55" x 2.33"
 Pack Case / Weight 360 / 22 lbs



73192

Galaxy S4 Hardshell Case - Black

- Sublimation metal insert
- Vivid image reproduction
- Precision fit

Size (h x w x d) 4.5" x 2.25" x 0.375"
 Imprint Area 4.55" x 2.33"
 Pack Case / Weight 360 / 22 lbs



73193

Galaxy S4 Hardshell Case - White

- Sublimation metal insert
- Vivid image reproduction
- Precision fit

Size (h x w x d) 4.5" x 2.25" x 0.375"
 Imprint Area 4.55" x 2.33"
 Pack Case / Weight 360 / 22 lbs



81002
2" Ceramic Round Ornament

- High quality ceramic ornament with top hole
- Vibrant color reproduction
- For all holidays, awards, and more!

Size (d x h)	2.5" x 0.15"
Imprint Area	2.5" x 2.5"
Heat Temp & Time	flat press: 375°F, 90s
Pack Case / Weight	100 / 7 lbs



81003
3" Ceramic Round Ornament

- Most popular ceramic ornament
- Vibrant color reproduction
- For all holidays, awards, and more!

Size (d x h)	3" x 0.15"
Imprint Area	3.3" x 3.3"
Heat Temp & Time	flat press: 375°F, 100s
Pack Case / Weight	100 / 10 lbs



82001
3" Ceramic Oval Ornament

- Large oval accommodate vertical artwork nicely!
- Vibrant color reproduction
- For all holidays, awards, and more!

Size (h x w x d)	3.3" x 2.4" x 0.15"
Imprint Area	3.3" x 3.3"
Heat Temp & Time	flat press: 375°F, 100s
Pack Case / Weight	100 / 10 lbs



83001
3" Ceramic Heart Ornament

- Extremely popular heart shape and top hole
- Vibrant color reproduction
- For all holidays, awards, and more!

Size (h x w x d)	3.1" x 3.1" x 0.15"
Imprint Area	3.3" x 3.3"
Heat Temp & Time	flat press: 375°F, 100s
Pack Case / Weight	100 / 9 lbs



84001
3" Ceramic Star Ornament

- Extremely popular heart shape and top hole
- Vibrant color reproduction
- For all holidays, awards, and more!

Size (h x w x d)	3.1" x 3.1" x 0.15"
Imprint Area	3.3" x 3.3"
Heat Temp & Time	flat press: 375°F, 100s
Pack Case / Weight	100 / 8 lbs



84002
3" Ceramic Snowflake Ornament

- Stippled edge accents
- Vibrant color reproduction
- For all holidays, awards, and more!

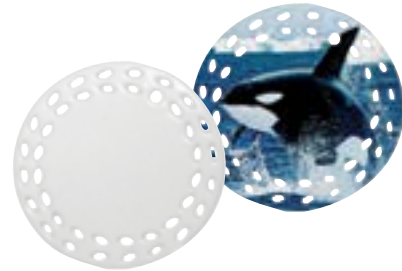
Size (h x w x d)	3.1" x 2.8" x 0.15"
Imprint Area	3.3" x 2.95"
Heat Temp & Time	flat press: 395°F, 100s
Pack Case / Weight	100 / 8 lbs



81007
3" Ceramic Round Doily, Heart Pattern Ornament

- Very popular heart pattern borders
- Vibrant color reproduction
- For all holidays, awards, and more!

Size (d x h)	3" x 0.15"
Imprint Area	3.25" x 3.25"
Heat Temp & Time	flat press: 375°F, 220s
Pack Case / Weight	100 / 11 lbs



81005
3" Ceramic Round Doily, Leaf Pattern Ornament

- Unique "leaf" pattern surround entire ornament
- Vibrant color reproduction
- For all holidays, awards, and more!

Size (d x h)	3" x 0.15"
Imprint Area	3.25" x 3.25"
Heat Temp & Time	flat press: 375°F, 220s
Pack Case / Weight	100 / 9 lbs



81006
3" Ceramic Round Doily, Triangle Ornament

- Alternating triangle pattern decorated the outer edge
- Vibrant color reproduction
- For all holidays, awards, and more!

Size (d x h)	3" x 0.15"
Imprint Area	3.25" x 3.25"
Heat Temp & Time	flat press: 375°F, 220s
Pack Case / Weight	100 / 11 lbs



84003
3" Ceramic Bell Tree Ornament

- Bell-shaped for any holiday theme
- Vibrant color reproduction
- For all holidays, awards, and more!

Size (h x w x d)	3.1" x 2.6" x 0.15"
Imprint Area	3.25" x 2.75"
Heat Temp & Time	flat press: 375°F, 270s
Pack Case / Weight	100 / 10 lbs



84004
4" Ceramic Christmas Tree Ornament

- Christmas tree shape is a holiday favorite
- Vibrant color reproduction
- For all holidays, awards, and more!

Size (h x w x d)	3.6" x 2.8" x 0.15"
Imprint Area	3.75" x 2.95"
Heat Temp & Time	flat press: 375°F, 390s
Pack Case / Weight	100 / 9 lbs



84005
3" Ceramic Ball Ornament - Noel

- Handsome presentation with old-style ornament look
- Vibrant color reproduction on reverse side insert
- For all holidays, awards, and more!

Size (h x w x d)	3" x 2.5" x 2"
Imprint Area	1.75" x 1.75"
Heat Temp & Time	flat press: 375°F, 120s
Pack Case / Weight	144 / 33.4 lbs



82004
3" Ceramic Oval Doily, Leaf Pattern Ornament

- Oval presentation is adorned with "leaf" pattern
- Vibrant color reproduction
- For all holidays, awards, and more!

Size (h x w x d)	3.6" x 2.8" x 0.15"
Imprint Area	3.75" x 2.95"
Heat Temp & Time	flat press: 375°F, 220s
Pack Case / Weight	100 / 9 lbs



82003
3" Ceramic Oval Doily, Triangle Pattern Ornament

- Vertical oval ornament, alternating triangle pattern
- Vibrant color reproduction
- For all holidays, awards, and more!

Size (h x w x d)	3.8" x 3" x 0.15"
Imprint Area	3.8" x 8"
Heat Temp & Time	flat press: 375°F, 220s
Pack Case / Weight	100 / 11 lbs



84010
Pewter Snowflake Ornament

- High quality pewter construction and unique styling
- Vibrant color reproduction
- For all holidays, awards, and more!

Size (h x w x d)	3" x 3" x 0.125"
Imprint Area	1.625" x 1.625"
Heat Temp & Time	flat press: 375°F, 120s
Pack Case / Weight	240 / 32 lbs



84006
3" Ceramic Ball Ornament - Poinsettia

- Handsome presentation with old-style ornament look
- Vibrant color reproduction on reverse side insert
- For all holidays, awards, and more!

Size (h x w x d)	3" x 2.5" x 2"
Imprint Area	1.75" x 1.75"
Heat Temp & Time	flat press: 375°F, 120s
Pack Case / Weight	144 / 33.4 lbs



84007
3" Ceramic Ball Ornament - Bell

- Handsome presentation with old-style ornament look
- Vibrant color reproduction on reverse side insert
- For all holidays, awards, and more!

Size (h x w x d)	3" x 2.5" x 2"
Imprint Area	1.75" x 1.75"
Heat Temp & Time	flat press: 375°F, 120s
Pack Case / Weight	144 / 33.4 lbs



84008
3" Ceramic Ball Ornament - Christmas Tree

- Handsome presentation with old-style ornament look
- Vibrant color reproduction on reverse side insert
- For all holidays, awards, and more!

Size (h x w x d)	3" x 2.5" x 2"
Imprint Area	1.75" x 1.75"
Heat Temp & Time	flat press: 375°F, 120s
Pack Case / Weight	144 / 33.4 lbs



Z91250

Red Faux Leather Wallet - Small

- White, sublimation face
- Soft leather-like texture
- 9-pocket with ID sleeve / Magnetic closure

Size (h x w x d) 4.3" x 4.4" w x 0.3"
 Imprint Area 4.3" x 4.4"
 Heat Temp & Time flat press: 419°F, 250s
 Pack Case / Weight 100 / 24 lbs

Z91251

Black Faux Leather Wallet - Small

- White, sublimation face
- Soft leather-like texture
- 9-pocket with ID sleeve / Magnetic closure

Size (h x w x d) 4.3" x 4.4" w x 0.3"
 Imprint Area 4.3" x 4.4"
 Heat Temp & Time flat press: 419°F, 250s
 Pack Case / Weight 100 / 24 lbs

Z91252

Brown Faux Leather Wallet - Small

- White, sublimation face
- Soft leather-like texture
- 9-pocket with ID sleeve / Magnetic closure

Size (h x w x d) 4.3" x 4.4" w x 0.3"
 Imprint Area 4.3" x 4.4"
 Heat Temp & Time flat press: 419°F, 250s
 Pack Case / Weight 100 / 24 lbs

Z91259

Red Top Grain Leather Wallet - Small

- White, sublimation face
- Top grain leather construction
- 8-pocket, ID sleeve / Magnetic closure

Size (h x w x d) 4.3" x 4.4" w x 0.3"
 Imprint Area 4.3" x 4.4"
 Heat Temp & Time flat press: 419°F, 250s
 Pack Case / Weight 100 / 24 lbs

Z91260

Black Top Grain Leather Wallet - Small

- White, sublimation face
- Top grain leather construction
- 8-pocket, ID sleeve / Magnetic closure

Size (h x w x d) 4.3" x 4.4" w x 0.3"
 Imprint Area 4.3" x 4.4"
 Heat Temp & Time flat press: 419°F, 250s
 Pack Case / Weight 100 / 24 lbs

Z91261

Brown Top Grain Leather Wallet - Small

- White, sublimation face
- Top grain leather construction
- 8-pocket, ID sleeve / Magnetic closure

Size (h x w x d) 4.3" x 4.4" w x 0.3"
 Imprint Area 4.3" x 4.4"
 Heat Temp & Time flat press: 419°F, 250s
 Pack Case / Weight 100 / 24 lbs



Z91253

Red Faux Leather Wallet - Medium

- White, sublimation face
- Soft leather-like texture
- 10-pocket with ID sleeve / Magnetic closure

Size (h x w x d) 4.3" x 4.4" w x 0.3"
 Imprint Area 4.3" x 4.4"
 Heat Temp & Time flat press: 419°F, 250s
 Pack Case / Weight 100 / 24 lbs

Z91254

Black Faux Leather Wallet - Medium

- White, sublimation face
- Soft leather-like texture
- 10-pocket with ID sleeve / Magnetic closure

Size (h x w x d) 4.3" x 4.4" w x 0.3"
 Imprint Area 4.3" x 4.4"
 Heat Temp & Time flat press: 419°F, 250s
 Pack Case / Weight 100 / 24 lbs

Z91255

Brown Faux Leather Wallet - Medium

- White, sublimation face
- Soft leather-like texture
- 10-pocket with ID sleeve / Magnetic closure

Size (h x w x d) 4.3" x 4.4" w x 0.3"
 Imprint Area 4.3" x 4.4"
 Heat Temp & Time flat press: 419°F, 250s
 Pack Case / Weight 100 / 24 lbs

Z91262

Red Top Grain Leather Wallet - Medium

- White, sublimation face, coin purse
- Top grain leather construction
- 10-pocket, ID sleeve / Dual magnetic closures

Size (h x w x d) 4.3" x 4.4" w x 0.3"
 Imprint Area 4.3" x 4.4"
 Heat Temp & Time flat press: 419°F, 250s
 Pack Case / Weight 100 / 24 lbs

Z91263

Black Top Grain Leather Wallet - Medium

- White, sublimation face, coin purse
- Top grain leather construction
- 10-pocket, ID sleeve / Dual magnetic closures

Size (h x w x d) 4.3" x 4.4" w x 0.3"
 Imprint Area 4.3" x 4.4"
 Heat Temp & Time flat press: 419°F, 250s
 Pack Case / Weight 100 / 24 lbs

Z91264

Brown Top Grain Leather Wallet - Medium

- White, sublimation face, coin purse
- Top grain leather construction
- 10-pocket, ID sleeve / Dual magnetic closures

Size (h x w x d) 4.3" x 4.4" w x 0.3"
 Imprint Area 4.3" x 4.4"
 Heat Temp & Time flat press: 419°F, 250s
 Pack Case / Weight 100 / 24 lbs



Z91256

Red Faux Leather Wallet - Large

- White, sublimation face / removable checkbook
- Soft leather-like texture / Dual magnetic closure
- 13-pocket, zippered coin purse

Size (h x w x d) 4.3" x 4.4" w x 0.3"
 Imprint Area 4.3" x 4.4"
 Heat Temp & Time flat press: 419°F, 250s
 Pack Case / Weight 100 / 24 lbs

Z91257

Black Faux Leather Wallet - Large

- White, sublimation face / removable checkbook
- Soft leather-like texture / Dual magnetic closure
- 13-pocket, zippered coin purse

Size (h x w x d) 4.3" x 4.4" w x 0.3"
 Imprint Area 4.3" x 4.4"
 Heat Temp & Time flat press: 419°F, 250s
 Pack Case / Weight 100 / 24 lbs

Z91258

Brown Faux Leather Wallet - Large

- White, sublimation face / removable checkbook
- Soft leather-like texture / Dual magnetic closure
- 13-pocket, zippered coin purse

Size (h x w x d) 4.3" x 4.4" w x 0.3"
 Imprint Area 4.3" x 4.4"
 Heat Temp & Time flat press: 419°F, 250s
 Pack Case / Weight 100 / 24 lbs

Z91265

Red Top Grain Leather Wallet - Large

- White, sublimation face / removable checkbook
- Top grain leather / Dual magnetic closure
- 13-pocket, zippered coin purse / 2 magnetic closures

Size (h x w x d) 4.3" x 4.4" w x 0.3"
 Imprint Area 4.3" x 4.4"
 Heat Temp & Time flat press: 419°F, 250s
 Pack Case / Weight 100 / 24 lbs

Z91266

Black Top Grain Leather Wallet - Large

- White, sublimation face / removable checkbook
- Top grain leather / Dual magnetic closure
- 13-pocket, zippered coin purse / 2 magnetic closures

Size (h x w x d) 4.3" x 4.4" w x 0.3"
 Imprint Area 4.3" x 4.4"
 Heat Temp & Time flat press: 419°F, 250s
 Pack Case / Weight 100 / 24 lbs

Z91267

Brown Top Grain Leather Wallet - Large

- White, sublimation face / removable checkbook
- Top grain leather / Dual magnetic closure
- 13-pocket, zippered coin purse / 2 magnetic closures

Size (h x w x d) 4.3" x 4.4" w x 0.3"
 Imprint Area 4.3" x 4.4"
 Heat Temp & Time flat press: 419°F, 250s
 Pack Case / Weight 100 / 24 lbs



Z91268

Nylon Wallet - Cranberry

- Rugged nylon construction
- 6-pocket, ID sleeve
- Velcro closure

Size (h x w x d) 4.3" x 4.4" w x 0.3"
 Imprint Area 4.3" x 4.4"
 Heat Temp & Time flat press: 419°F, 250s
 Pack Case / Weight 100 / 24 lbs



Z91269

Nylon Wallet - Black

- Rugged nylon construction
- 6-pocket, ID sleeve
- Velcro closure

Size (h x w x d) 4.3" x 4.4" w x 0.3"
 Imprint Area 4.3" x 4.4"
 Heat Temp & Time flat press: 419°F, 250s
 Pack Case / Weight 100 / 24 lbs



Z91270

Nylon Wallet - Pink

- Rugged nylon construction
- 6-pocket, ID sleeve
- Velcro closure

Size (h x w x d) 4.3" x 4.4" w x 0.3"
 Imprint Area 4.3" x 4.4"
 Heat Temp & Time flat press: 419°F, 250s
 Pack Case / Weight 100 / 24 lbs



Z91271

Nylon Wallet - Chocolate

- Rugged nylon construction
- 6-pocket, ID sleeve
- Velcro closure

Size (h x w x d) 4.3" x 4.4" w x 0.3"
 Imprint Area 4.3" x 4.4"
 Heat Temp & Time flat press: 419°F, 250s
 Pack Case / Weight 100 / 24 lbs



Z91272

Nylon Wallet - Cool Gray

- Rugged nylon construction
- 6-pocket, ID sleeve
- Velcro closure

Size (h x w x d) 4.3" x 4.4" w x 0.3"
 Imprint Area 4.3" x 4.4"
 Heat Temp & Time flat press: 419°F, 250s
 Pack Case / Weight 100 / 24 lbs



Z91273

Nylon Wallet - Royal Blue

- Rugged nylon construction
- 6-pocket, ID sleeve
- Velcro closure

Size (h x w x d) 4.3" x 4.4" w x 0.3"
 Imprint Area 4.3" x 4.4"
 Heat Temp & Time flat press: 419°F, 250s
 Pack Case / Weight 100 / 24 lbs



Z91274

Denim Wallet w/ Black Zipper

- Rugged blue denim construction
- 2-pocket, zippered coin purse
- 6-pocket, ID sleeve, magnetic closure

Size (h x w x d) 4.3" x 4.4" w x 0.3"
 Imprint Area 4.3" x 4.4"
 Heat Temp & Time flat press: 419°F, 250s
 Pack Case / Weight 100 / 24 lbs



91292

Backpack w/ Sublimation Panel - Black

- Soft polyester material
- Allow zipper pockets
- Tear and water-resistant

Size call for info.
 Imprint Area



91294

Backpack w/ Sublimation Panel - Bue

- Soft polyester material
- Allow zipper pockets
- Tear and water-resistant

Size call for info.
 Imprint Area



85086

Heart Shape MDF Keychain

- Medium density fiberboard backing
- Metal ring with plastic swivel clasp
- Vibrant image reproduction

Size (h x w x d) 2.5" x 2.28" x .118"
 Imprint Area 2.75" x 2.5"
 Pack Case 240



85087

Round MDF Keychain

- Medium density fiberboard backing
- Metal ring with plastic swivel clasp
- Vibrant image reproduction

Size (h x w x d) 2.95" x 2.98" x .118"
 Imprint Area 3.25" x 3.25"
 Pack Case 240



85088

Rectangle MDF Keychain

- Medium density fiberboard backing
- Metal ring with plastic swivel clasp
- Vibrant image reproduction

Size (h x w x d) 2.95" x .98" x .118"
 Imprint Area 3.25" x 1.25"
 Pack Case 240



85089

Square MDF Keychain

- Medium density fiberboard backing
- Metal ring with plastic swivel clasp
- Vibrant image reproduction

Size (h x w x d) 1.96" x 1.96" x .118"
 Imprint Area 2.25" x 2.25"
 Pack Case 240



85090

Oval MDF Keychain

- Medium density fiberboard backing
- Metal ring with plastic swivel clasp
- Vibrant image reproduction

Size (h x w x d) 2.56" x 1.38" x .118"
 Imprint Area 2.75" x 1.6"
 Pack Case 240



85092

Oval Polymer Keychain

- High quality polymer face
- Metal ring with 5 link chain
- 2-sided vibrant image reproduction

Size (h x w) 3.22" x 2.24"
 Imprint Area 3.5" x 2.5"
 Pack Case 150 / 24 lbs



85091

43mm Round Polymer Keychain

- High quality polymer face
- Metal ring with 5 link chain
- 2-sided vibrant image reproduction

Size (h x w) 1.85" x 1.85"
 Imprint Area 1.85"
 Pack Case 240



85093

Rectangle Polymer Keychain

- High quality polymer face with radius cut corners
- Metal ring with 5 link chain
- 2-sided vibrant image reproduction

Size (h x w) 3.22" x 2.24"
 Imprint Area 3.5" x 2.5"
 Pack Case 240



85094

Credit Card Polymer Keychain

- High quality polymer face with radius cut corners
- Metal ring with 5 link chain / Credit card sized
- 2-sided vibrant image reproduction

Size (h x w) 3.346" x 2.086"
 Imprint Area 3.5" x 2.3"
 Pack Case 240



85055

Heart Key Ring

- Chrome-plated heart shape with dimples
- Vibrant color reproduction on recessed metal insert
- For all novelty gifts, awards, and more!

Size (h x w)	1.9" x 1.4"
Imprint Area	1" x 1"
Heat Temp & Time	flat press: 365°F, 120s
Pack Case / Weight	120 / 12 lbs



85000

Tape Measure Key Ring

- Metal tape measure case
- Vibrant color reproduction on recessed metal insert
- 38" tape measure

Size (h x w)	1.9" x 1.4"
Imprint Area	1" x 1"
Heat Temp & Time	flat press: 365°F, 120s
Pack Case / Weight	120 / 12 lbs



85016

Rectangle Key Ring

- Rectangular chrome-plated alloy key ring
- Vibrant color reproduction on recessed metal insert
- For all novelty gifts, awards, and more!

Size (h x w)	1.8" x 1.1"
Imprint Area	0.8" x 1.1"
Heat Temp & Time	flat press: 365°F, 120s
Pack Case / Weight	120 / 13 lbs



85070

Double Heart Key Ring

- Polished surface
- Vibrant color reproduction on recessed metal insert
- For all novelty gifts, awards, and more!

Size (h x w)	1.9" x 1.4"
Imprint Area	1" x 1"
Heat Temp & Time	flat press: 365°F, 120s
Pack Case / Weight	120 / 12 lbs

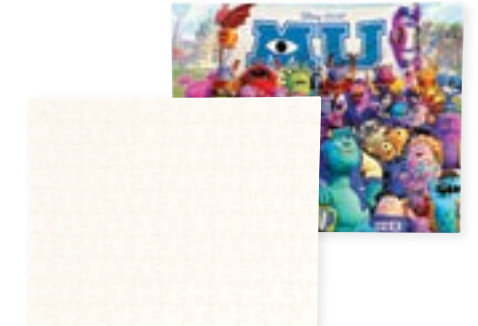


91200

Necktie - Matte

- Smooth and elegant with classic medium width
- Vibrant color reproduction on matte or shiny surface
- Novelty gift, awards, and more!

Size (l x w)	56" x 3.8"
Imprint Area	58" x 4.5"
Heat Temp & Time	flat press: 215°F, 120s
Pack Case / Weight	100 / 10 lbs



91100

110-Piece Set Puzzle

- Authentic interlocking puzzle pieces
- Glossy surface for vibrant color reproduction
- Novelty gifts, auction items, fundraising and more!

Size (h x w x d)	9.5" x 7.5" x .01"
Imprint Area	9.65" x 7.5"
Heat Temp & Time	flat press: 400°F, 40s
Pack Case / Weight	400 / 38 lbs



85022

Diamond Key Ring

- Diamond puzzle theme chrome-plated alloy key ring
- Vibrant color reproduction on recessed metal insert
- Decoratable metal insert with self-adhesive

Size (h x w)	2" x 1.8"
Imprint Area	1" x 1"
Heat Temp & Time	flat press: 365°F, 120s
Pack Case / Weight	120 / 13 lbs



85027

Starburst Key Ring

- 6 point diamond-shaped metallic body
- Vibrant color reproduction on recessed metal insert
- Polished surface

Size (h x w)	1.9" x 1.4"
Imprint Area	1" x 1"
Heat Temp & Time	flat press: 365°F, 120s
Pack Case / Weight	120 / 12 lbs



85035

Oval Carabiner Key Ring

- 1 main carabiner and 4 individual mini-key ring clasps
- Polished surface
- Decoratable metal insert with self-adhesive

Size (h x w)	1.9" x 1.4"
Imprint Area	1" x 1"
Heat Temp & Time	flat press: 365°F, 120s
Pack Case / Weight	120 / 12 lbs



85082

Oval Key Ring

- Chrome-plated heart shape with dimples
- Vibrant color reproduction on recessed metal insert
- For all novelty gifts, awards, and more!

Size (h x w)	1.9" x 1.4"
Imprint Area	1" x 1"
Heat Temp & Time	flat press: 365°F, 120s
Pack Case / Weight	120 / 12 lbs

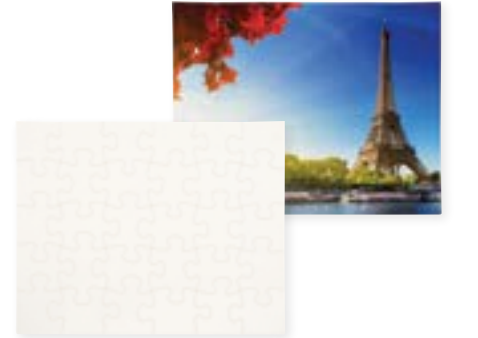


91201

Necktie - Shiny

- Smooth and elegant with classic medium width
- Vibrant color reproduction on matte or shiny surface
- Novelty gift, awards, and more!

Size (l x w)	56" x 3.8"
Imprint Area	58" x 4.5"
Heat Temp & Time	flat press: 215°F, 120s
Pack Case / Weight	100 / 10 lbs



91102

30-Piece Set Puzzle

- Novice-level interlocking puzzle pieces
- Vibrant color reproduction on glossy surface
- Novelty gifts, auction items, fundraising and more!

Size (h x w x d)	9.5" x 7.5" x .01"
Imprint Area	9.65" x 7.5"
Heat Temp & Time	flat press: 400°F, 40s
Pack Case / Weight	400 / 36 lbs



85047

Swirl Key Ring

- Chrome-plated swirl shape alloy key ring
- Vibrant color reproduction on recessed metal insert
- For all novelty gifts, awards, and more!

Size (h x w)	2" x 1.4"
Imprint Area	1" x 1"
Heat Temp & Time	flat press: 365°F, 120s
Pack Case / Weight	120 / 22 lbs



85061

Twisted Heart Key Ring

- Chrome-plated twisted heart shape alloy key ring
- Vibrant color reproduction on recessed metal insert
- For all novelty gifts, awards, and more!

Size (h x w)	2" x 1.3"
Imprint Area	1" x 1"
Heat Temp & Time	flat press: 365°F, 120s
Pack Case / Weight	120 / 11 lbs



85062

Heart w/ Bottle Opener Key Ring

- Working bottle opener
- Polished surface
- Metal insert with self-adhesive

Size (h x w)	1.9" x 1.4"
Imprint Area	1" x 1"
Heat Temp & Time	flat press: 365°F, 120s
Pack Case / Weight	120 / 12 lbs



MR101

Sublimation Flag - 12" x 18"

- White, polyester material
- Double-sided printing / Excellent color reproduction
- Hemmed edges

Size (h x w)	12" x 18"
Imprint Area	12.5" x 18.5"
Heat Temp & Time	call for info
Pack Case / Weight	400 / 26 lbs



MR103

Sublimation Flag - 12.5" x 18"

- White, polyester material
- Double-sided printing / Excellent color reproduction
- Hemmed edges

Size (h x w)	12.5" x 18"
Imprint Area	13" x 18.5"
Heat Temp & Time	call for info
Pack Case / Weight	400 / 27 lbs

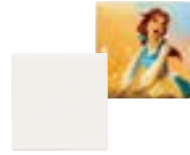


MR120

Sublimation Flag - 28" x 40"

- White, polyester material
- Double-sided printing / Excellent color reproduction
- Built-in pole pocket / Hemmed edges

Size (h x w)	28" x 40"
Imprint Area	28.5" x 41"
Heat Temp & Time	call for info
Pack Case / Weight	200 / 62 lbs



52200

Ceramic Tile - Square 1.75"

- Our smallest ceramic tile
- Sublimation coating for vibrant image reproduction
- For tile murals, back splashes & more!

Size (h x w x d)	1.75" x 1.75" x 0.2"
Imprint Area	2" x 2"
Heat Temp & Time	flat press: 410°F, 140s
Pack Case / Weight	200 / 12 lbs



54401 Glossy 54403 Matte

Ceramic Tile - Square 4.25"

- Most popular high quality ceramic tile, framable
- Sublimation coating for vibrant image reproduction
- For tile murals, back splashes & more!

Size (h x w x d)	4.25" x 4.25" x 0.2"
Imprint Area	4.45" x 4.45"
Heat Temp & Time	flat press: 419°F, 240s
Pack Case / Weight	48 / 12 lbs



56601 Glossy 56602 Matte

Ceramic Tile - Square 6"

- Larger footprint, high quality ceramic tile, framable
- Sublimation coating for vibrant image reproduction
- For tile murals, back splashes & more!

Size (h x w x d)	6" x 6" x 0.2"
Imprint Area	6.25" x 6.25"
Heat Temp & Time	flat press: 419°F, 270s
Pack Case / Weight	36 / 20 lbs



59000

Photo Slate - Small Square

- Small footprint for mantle or curio cabinet
- High quality machined slate, beveled
- High contrast imagery, foot stands
- Portraits, awards & recognition

Size (h x w x d)	5.85" x 5.85" x 0.375"
Imprint Area	6" x 6"
Heat Temp & Time	flat press: 419°F, 300s
Pack Case / Weight	40 / 43 lbs



59001

Photo Slate - Medium Square

- Larger image area to shows more detail
- High quality machined slate, beveled
- High contrast imagery, foot stands
- Portraits, awards & recognition

Size (h x w x d)	7.2" x 7.2" x 0.375"
Imprint Area	7.45" x 7.45"
Heat Temp & Time	flat press: 419°F, 300s
Pack Case / Weight	20 / 35 lbs

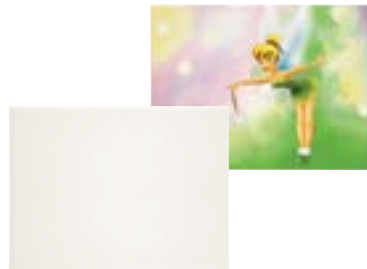


59002

Photo Slate - Large Square

- Extreme image area for the special moments
- High quality machined slate, beveled
- High contrast imagery, foot stands
- Portraits, awards & recognition

Size (h x w x d)	11.7" x 11.7" x 0.375"
Imprint Area	12" x 12"
Heat Temp & Time	flat press: 419°F, 300s
Pack Case / Weight	9 / 35 lbs

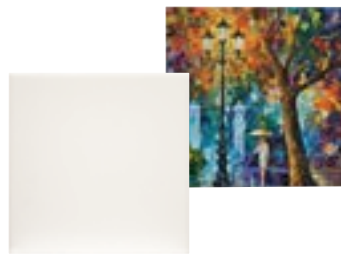


56800

Ceramic Tile - Rectangle 6" x 8"

- High quality ceramic tile, framable
- Sublimation coating for vibrant image reproduction
- Kitchen & bath, tile murals, & more!

Size (h x w x d)	5.9" x 7.9" x 0.3"
Imprint Area	6.25" x 8.25"
Heat Temp & Time	flat press: 419°F, 290s
Pack Case / Weight	36 / 30 lbs



58080

Ceramic Tile - Square 8"

- High quality ceramic tile
- Sublimation coating for vibrant image reproduction
- For tile murals, back splashes & more!

Size (h x w x d)	7.9" x 7.9" x 0.3"
Imprint Area	8.25" x 8.25"
Heat Temp & Time	flat press: 419°F, 290s
Pack Case / Weight	36 / 39 lbs



58100

Ceramic Tile - Rectangle 8" x 10"

- High quality ceramic tile
- Sublimation coating for vibrant image reproduction
- Used for tile murals, fine art, kitchen & bath, & more!

Size (h x w x d)	7.9" x 9.9" x 0.3"
Imprint Area	8.25" x 10.25"
Heat Temp & Time	flat press: 419°F, 310s
Pack Case / Weight	36 / 50 lbs



59004

Photo Slate - Small Rectangle

- Low profile landscape orientation
- High quality machined slate, beveled
- High contrast imagery, foot stands
- Portraits, awards & recognition

Size (h x w x d)	8.58" x 4.68" x 0.375"
Imprint Area	8.75" x 4.85"
Heat Temp & Time	flat press: 419°F, 300s
Pack Case / Weight	20 / 25 lbs



59005

Photo Slate - Medium Rectangle

- Taller rectangle allows for more image area
- High quality machined slate, beveled
- High contrast imagery, foot stands
- Portraits, awards & recognition

Size (h x w x d)	5.85" x 7.2" x 0.375"
Imprint Area	6.05" x 7.45"
Heat Temp & Time	flat press: 419°F, 300s
Pack Case / Weight	28 / 37 lbs



59006

Photo Slate - Large Rectangle

- Largest landscape or portrait orientation
- High quality machined slate, beveled
- High contrast imagery, foot stands
- Portraits, awards & recognition

Size (h x w x d)	11.7" x 7.2" x 0.375"
Imprint Area	12" x 7.45"
Heat Temp & Time	flat press: 419°F, 300s
Pack Case / Weight	20 / 56 lbs

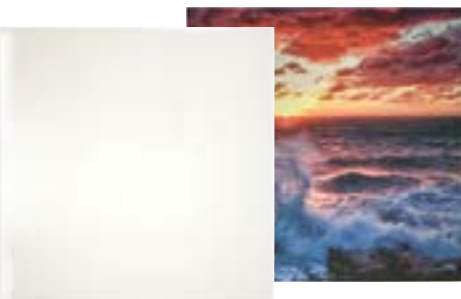


58120

Ceramic Tile - Rectangle 8" x 12"

- High quality ceramic tile
- Sublimation coating for vibrant image reproduction
- Used for tile murals, fine art, kitchen & bath, & more!

Size (h x w x d)	7.9" x 11.9" x 0.3"
Imprint Area	8.25" x 12.25"
Heat Temp & Time	flat press: 419°F, 310s
Pack Case / Weight	24 / 42 lbs



58121

Ceramic Tile - Square 12"

- Our biggest ceramic tile
- Sublimation coating for vibrant image reproduction
- For tile murals, back splashes & more!

Size (h x w x d)	11.8" x 11.8" x 0.3"
Imprint Area	12.25" x 12.25"
Heat Temp & Time	flat press: 419°F, 500s
Pack Case / Weight	16 / 54 lbs



40100

Wooden Pencil Holder & Photo Tile

- Maple-finished wood construction with 3 top slots
- 2-sided sublimation tile inserts and base feet
- For the office, study, or library

Size (h x w x d)	5" x 5" x 1.875"
Imprint Area	4.125" x 4.125"
Heat Temp & Time	flat press: 420°F, 240s
Pack Case / Weight	40 / 41 lbs



71441 Golden Oak 71442 Ebony Black 71445 Red Mahogany

Jewelry Box w/ Sublimation Tile - Square 4.25"

- Fully lined interior, most popular size, 3 colors
- Gold-tone hinges, colorful image reproduction on tile
- Anniversary, birthday's, awards

Size (h x w x d)	5.5" x 5.5" x 2.3"
Imprint Area	4.25" x 4.25"
Heat Temp & Time	flat press: 419°F, 300s
Pack Case / Weight	36 / 37 lbs



71661 Golden Oak 71662 Ebony Black 71665 Red Mahogany

Jewelry Box w/ Sublimation Tile - Square 6"

- Fully lined interior, roomy storage area
- Gold-tone hinges, colorful image reproduction on tile
- Anniversary, birthday's, awards

Size (h x w x d)	7.25" x 7.25" x 2.3"
Imprint Area	6.25" x 6.25"
Heat Temp & Time	flat press: 419°F, 300s
Pack Case / Weight	24 / 54 lbs



71681 Golden Oak 71682 Ebony Black 71685 Red Mahogany

Jewelry Box w/ Sublimation Tile - Rectangle 6" x 8"

- Fully lined interior, larger interior storage
- Gold-tone hinges, colorful image reproduction on tile
- Anniversary, birthday's, awards

Size (h x w x d)	7.25" x 9.25" x 2.3"
Imprint Area	6.25" x 8.25"
Heat Temp & Time	flat press: 419°F, 300s
Pack Case / Weight	24 / 60 lbs



87004

Sunburst Compact Mirror

- Sunburst-shape with interior mirror
- Vibrant color reproduction on white metal insert
- Novelty gift, awards, and more!

Size (h x w x d)	3.1" x 2.9" x 0.4"
Imprint Area	2.2" x 2.2"
Heat Temp & Time	flat press: 365°f, 120s
Pack Case / Weight	144 / 22 lbs



87007

Round Compact Mirror

- Most popular shape with interior mirror
- Vibrant color reproduction on white metal insert
- Novelty gift, awards, and more!

Size (d)	2.8"
Imprint Area	1.9" x 1.9"
Heat Temp & Time	flat press: 365°f, 120s
Pack Case / Weight	144 / 25 lbs



87008

Square Compact Mirror

- Square shape with classic rounded edges
- Vibrant color reproduction
- Novelty gift, awards, and more!

Size (h x w x d)	3" x 2.6" x 0.3"
Imprint Area	2.3" x 2.3"
Heat Temp & Time	flat press: 365°f, 120s
Pack Case / Weight	144 / 28 lbs

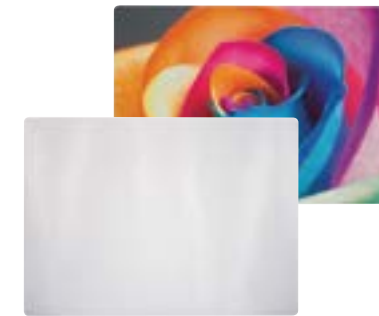


76000

8" x 11" Rectangle Glass Cutting Board

- Small footprint but ample food preparation area!
- Colorful decoration on underside; base feet included
- Culinary and retail applications

Size (h x w x d)	11.3" x 7.9" x 0.2"
Imprint Area	11.35" x 8.25"
Heat Temp & Time	flat press: 195°f, 240s
Pack Case / Weight	24 / 33 lbs



76001

11" x 16" Rectangle Glass Cutting Board

- Larger surface area for bigger events!
- Colorful decoration on underside; base feet included
- Culinary and retail applications

Size (h x w x d)	15.3" x 11.3" x 0.2"
Imprint Area	15.25" x 11.25"
Heat Temp & Time	flat press: 195°f, 240s
Pack Case / Weight	12 / 33 lbs



76005

Wine Shaped Glass Cutting Board

- Wine shaped
- Colorful decoration on underside; base feet included
- Culinary and retail applications

Size (h x w x d)	7.87" x 15.354" x 0.2"
Imprint Area	8" x 15.5"
Heat Temp & Time	flat press: 195°f, 240s
Pack Case / Weight	24 /



87009

Oval Compact Mirror

- Oval shape accommodates portrait images
- Vibrant color reproduction
- Novelty gift, awards, and more!

Size (h x w x d)	2.3" x 2.8" x 0.4"
Imprint Area	1.8" x 2.4"
Heat Temp & Time	flat press: 365°f, 120s
Pack Case / Weight	180 / 31 lbs



87015

Heart Compact Mirror

- Very popular heart shape with interior mirror
- Vibrant color reproduction
- Novelty gift, awards, and more!

Size (h x w x d)	2.6" x 2.8" x 0.3"
Imprint Area	2.2" x 2.4"
Heat Temp & Time	flat press: 365°f, 120s
Pack Case / Weight	144 / 26 lbs



90001

Metal Business Card Case

- All metal construction / Locking friction tab
- Sublimation insert for colorful decoration
- For the entrepreneur in you

Size (h x w x d)	2.4" x 3.7" x 0.9"
Imprint Area	1.7" x 3.2"
Heat Temp & Time	flat press: 375°f, 120s
Pack Case / Weight	140 / 23 lbs



76002

12" Circle Glass Cutting Board

- Small footprint but ample food preparation area!
- Colorful decoration on underside; base feet included
- Culinary and retail applications

Size (h x w x d)	11.95" x 11.95" x 0.2"
Imprint Area	12.25" x 12.25"
Heat Temp & Time	flat press: 195°f, 240s
Pack Case / Weight	24 / 33 lbs



76003

8" Circle Glass Cutting Board

- Small footprint but ample food preparation area!
- Colorful decoration on underside; base feet included
- Culinary and retail applications

Size (h x w x d)	7.9" x 7.9" x 0.2"
Imprint Area	8.25" x 8.25"
Heat Temp & Time	flat press: 195°f, 240s
Pack Case / Weight	24 / 33 lbs



72013

Mouse Pad - Heart

- Polyester sublimation cover
- Durable rubber backing
- Works with laser and IR mouses

Size (h x w x d)	7.75" x 7.75" x 0.125"
Imprint Area	9.45" x 7.95"
Heat Temp & Time	flat press: 400°f, 40s
Pack Case / Weight	100 / 28 lbs



21201

Ceramic Coin Bank

- Save for a rainy day with this ceramic coin bank
- Vibrant color reproduction up to 360°
- Novelty gift, awards, and more!

Size (h x od)	3.7" x 3.2"
Imprint Area	8.43" x 3.82"
Heat Temp & Time	flat press: 360°f, 60s
Pack Case / Weight	36 / 25 lbs



21610

Ceramic Pencil Caddy - Black

- Sturdy, high gloss ceramic surface
- Sublimation coating for vibrant image reproduction
- For the office, classroom, or telephone station

Size (h x od)	5" x 3.3"
Imprint Area	8.43" x 5.82"
Heat Temp & Time	flat press: 360°f, 60s
Pack Case / Weight	36 / 49 lbs



21612

Ceramic Pencil Caddy - Blue

- Sturdy, high gloss ceramic surface
- Sublimation coating for vibrant image reproduction
- For the office, classroom, or telephone station

Size (h x od)	5" x 3.3"
Imprint Area	8.43" x 5.82"
Heat Temp & Time	flat press: 360°f, 60s
Pack Case / Weight	36 / 49 lbs



72021

Mouse Pad - 5mm Thick

- Polyester sublimation cover
- Durable rubber backing
- Works with laser and IR mouses

Size (h x w x d)	9.3" x 7.8" x 0.19"
Imprint Area	9.45" x 7.95"
Heat Temp & Time	flat press: 400°f, 40s
Pack Case / Weight	100 / 28 lbs



72011

Mouse Pad - 3mm Thick

- Polyester sublimation cover
- Durable rubber backing
- Works with laser and IR mouses

Size (h x w x d)	9.3" x 7.8" x 0.119"
Imprint Area	9.45" x 7.95"
Heat Temp & Time	flat press: 400°f, 40s
Pack Case / Weight	100 / 28 lbs



72012

Mouse Pad - Circle

- Polyester sublimation cover
- Durable rubber backing
- Works with laser and IR mouses

Size (h x w x d)	7.75" x 7.75" x 0.125"
Imprint Area	9.45" x 7.95"
Heat Temp & Time	flat press: 400°f, 40s
Pack Case / Weight	160 /

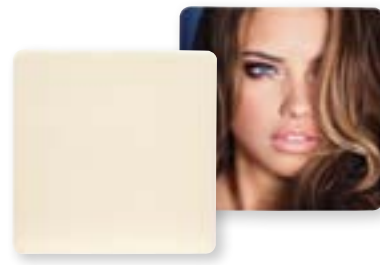


80305

Sandstone Heart Drink Coaster

- Absorbent quality, flat surface prevents slippage
- Brilliant image features a matte finish
- Heart shaped

Size (h x w x d) 4.3" x 4.4" w x 0.3"
 Imprint Area 4.3" x 4.4"
 Heat Temp & Time flat press: 419°f, 250s
 Pack Case / Weight 100 / 24 lbs



80306

Sandstone Square Drink Coaster

- Absorbent quality, flat surface prevents slippage
- Brilliant image features a matte finish
- Square shaped with rounded corners

Size (h x w x d) 4.3" x 4.4" x 0.3"
 Imprint Area 4.3" x 4.4"
 Heat Temp & Time flat press: 419°f, 250s
 Pack Case / Weight 100 / 24 lbs



80307

Sandstone Round Drink Coaster

- Absorbent quality, flat surface prevents slippage
- Brilliant image features a matte finish
- Circular shaped

Size (h x w x d) 4.3" x 4.3" x 0.3"
 Imprint Area 4.3" x 4.3"
 Heat Temp & Time flat press: 419°f, 250s
 Pack Case / Weight 100 / 24 lbs



91242

Car Mat Front Set (Pair)

- 17" x 27" image area
- Reinforced edge stitching
- Anti-slip base

Size (h x w) 4.3" x 4.4" x 0.3"
 Imprint Area 17" x 27"



91243

Car Mat Rear Set (Pair)

- 17" x 27" image area
- Reinforced edge stitching
- Anti-slip base

Size (h x w) 4.3" x 4.4" x 0.3"
 Imprint Area 17" x 23"



91600

Small Notepad

- Polyester sublimation cover
- Faux black suede backing
- Notepad and convenient pen/pencil holder sleeve

Size (h x w x d) 5.125" x 3.615" x 0.5"
 Imprint Area 5.25" x 6.75"
 Heat Temp & Time flat press: 383°f, 170s
 Pack Case / Weight 100 / 17 lbs



91601

Medium Notepad

- Polyester sublimation cover
- Faux black suede backing
- For the student, administrative assistant, & more!

Size (h x w x d) 9.125" x 7" x 0.5"
 Imprint Area 9.25" x 7.25"
 Heat Temp & Time flat press: 383°f, 200s
 Pack Case / Weight 50 / 24.5 lbs

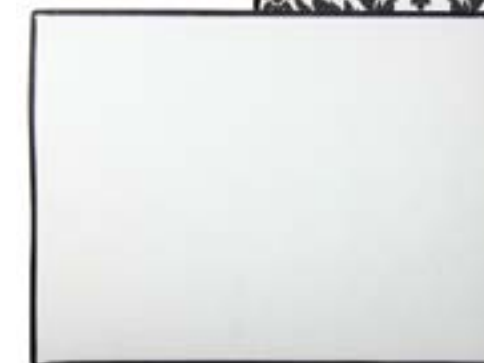


89007

Sublimation Fleece Blanket

- Soft polyester fleece sublimation blanket
- Hem finished stitch
- Double-sided printing

Size (h x w x d) 50" x 60" w x 0.4"
 Imprint Area 54" x 64"

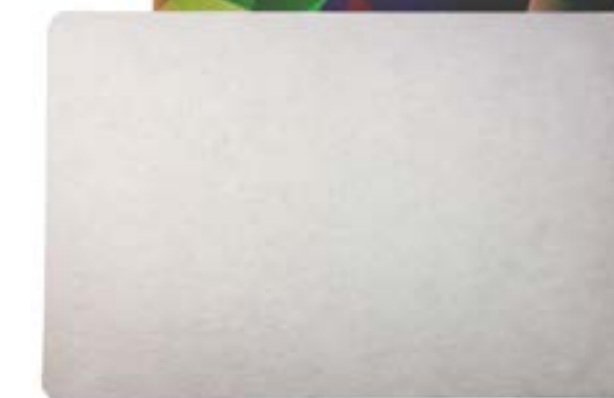


91241

Door Mat

- 19" x 29" image area
- Reinforced edge stitching
- Anti-slip base

Size (h x w) 4.3" x 4.4" x 0.3"
 Imprint Area 4.3" x 4.4"

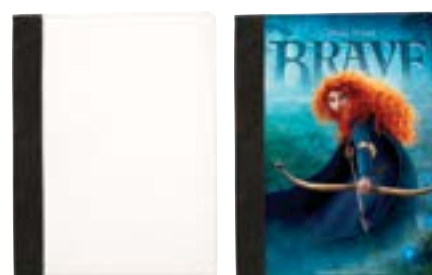


91244

Comfort Mat

- 19" x 29" image area
- Reinforced edge stitching
- Anti-slip base

Size (h x w) 4.3" x 4.4" x 0.3"
 Imprint Area 4.3" x 4.4"



91602

Large Notepad

- Sublimation cover / Faux black suede backing
- For the classroom or boardroom!
- A4 Sized Notebook

Size (h x w x d) 12.5" x 9.5" x 0.5"
 Imprint Area 12.75" x 9.5"
 Heat Temp & Time flat press: 383°f, 240s
 Pack Case / Weight 50 / 50 lbs



91603

Business Card Holder

- Sublimation cover / faux black suede backing
- Holds 48 standard 3.5" x 2" cards
- For the aspiring businessperson

Size (h x w x d) 10" x 5.25" x .5"
 Imprint Area 10.25" x 3.75"
 Heat Temp & Time flat press: 383°f, 240s
 Pack Case / Weight 50 / 33 lbs



Car sunshade imprinted and folded

91240

Car Sunshade Set - 2 Pieces

- Lightweight and durable
- Suction cups allow accurate positioning
- For novelty gifts and retail applications

Size (h x w x d) 17.3" x 15"
 Imprint Area 17.75" x 15.5"
 Heat Temp & Time flat press: 400°f, 40s
 Pack Case / Weight 250 / 27 lbs



91298

Double Wine Tote

- Soft neoprene material
- Double-sided printing
- Double bottle; Comfortable carrying handle

Size (h x w x d) call for info
Imprint Area



91289

Single Wine Tote

- Soft neoprene material
- Double-sided printing
- Single bottle; Comfortable carrying handle

Size (h x w x d) call for info
Imprint Area



91286

Canvas Wine Tote Beverage Insulator

- Polyester construction
- Single bottle capacity
- Decorate strap and all sides

Size (h x w) 9.645" x 4.72"
Imprint Area call for info



Sublimation Flip Flops

- Popular and unique American novelty
- Vibrant color reproduction; anti-slip tread
- Strap included

SKU#	Item Name	Size (h x w x d)	Imprint Area	Heat Temp & Time	CPQ / WGT	Men Shoe Size
72030	Black Large	13.5" x 11" x 0.5"	13.75" x 11.25"	flat press - 375°F, 30s	20 / 23 lbs	8 - 12
72031	Black Medium	13" x 10.75" x 0.5"	13.25" x 11"	flat press - 375°F, 30s	20 / 22 lbs	4 - 8
72032	Black Small	12" x 10.25" x 0.5"	12.25" x 10.5"	flat press - 375°F, 30s	20 / 20 lbs	2 - 4



31013

Ceramic Pet Bowl - Small

- Pet bowls for dogs or cats feature bright white
- Sublimation decoration on outer facing
- Novelty gifts and retail applications

Size (h x w x circ.) 2.375" x 19.72" x 6.125"
Imprint Area 2.1" x 19.72"
Pack Case / Weight 24 / 35 lbs.



31006

Ceramic Pet Bowl - Large

- Pet bowls for dogs or cats feature bright white
- Sublimation decoration on outer facing
- Novelty gifts and retail applications

Size (h x w x circ.) 3.0" x 22.98" x 7.25"
Imprint Area 2.57" x 19.98"
Pack Case / Weight 24 / 60 lbs.



32200

Ceramic Vase - White

- White ceramic
- Basket style design
- Colorful reproduction

Size (h x w) 9.645" x 3.74"
Imprint Area 4.724" x 11.81"
Pack Case 6



61000

10" Gold Trim Plate - Ceramic

- Decorative plates feature outer/inner gold trim
- Stands included
- Novelty gifts and retail applications

Size (d) 10.5"
Imprint Area 6" x 6"
Heat Temp & Time flat press: 360°F, 300s
Pack Case / Weight 24 / 42 lbs



67500

8" Double Gold Trim Plate - Ceramic

- These ceramic plates give the look of fine China!
- Comes complete with black easel stands
- Novelty gifts and retail applications

Size (d) 8.1"
Imprint Area 4.8" x 4.8"
Heat Temp & Time flat press: 360°F, 300s
Pack Case / Weight 36 / 30 lbs



32201

Ceramic Vase - Beige

- Beige ceramic
- Basket style design
- Colorful reproduction

Size (h x w) 9.645" x 3.74"
Imprint Area 4.724" x 11.81"
Pack Case 6



32000

Small Cookie Jar

- Sublimation-coated ceramic
- Natural wood top / Air tight seal
- Food safe / Dishwasher safe

Size (h x w) 14.875" x 14.875"
Imprint Area 15" x 15"



32001

Medium Cookie Jar

- Sublimation-coated ceramic
- Natural wood top / Air tight seal
- Food safe / Dishwasher safe

Size (h x w) 16.875" x 16.875"
Imprint Area 17" x 17"



32002

Large Cookie Jar

- Sublimation-coated ceramic
- Natural wood top / Air tight seal
- Food safe / Dishwasher safe

Size (h x w) 18.875" x 18.875"
Imprint Area 11" x 19"

HEAT PRESS

ARC MULTI-FUNCTIONAL HEAT PRESS

TANGENTIAL DIRECTION



BJ891

ARC Multi-Function Mug Press

The Arc Multi-function Mug Press is a revolutionary sublimation heat press that features an improved lever mechanism that provides even pressure along the surface of cylindrical substrates, thus resulting in an even image transfer. In addition, standard options are expanded to allow production of a wider variety of substrates including 1.5 oz. shot glasses, 2.5 oz. mini mugs, 6-10 oz. ceramic mugs, 11-15 oz. ceramic mugs, and 12 and 17 oz. cone-shaped latte mugs. Swapping out heating elements has never been easier!

The secret behind the improved pressure application is the pressure lever and the angle at which the lever travels when applying pressure to the substrate. In standard mug presses, the lever travels in a strict horizontal path resulting in an uneven surface pressure. This can cause undesirable results stemming from wrinkles in the transfer paper.

The Arc mug press lever smoothly travels in an arc pattern that applies even pressure on the substrate's surface. With this simple adjustment, paper wrinkles are virtually eliminated and surface pressure is more even resulting in beautifully sublimated products.

In addition to the improved pressure lever, the Arc redesign features a universal dual digital display, updated adjustment screw for wrenchless adjustments, and improved anti-skid pads for production stability.

- Tangential direction
- Smooth lever action
- Even pressure distribution
- Automatic digital timer
- Solid steel welded framework
- Super coil-micro winding heater technology
- Soft heat liner

Controller	Digital Time / Temp.
Power	300 Watts
Current	9 Amps
Voltage	100-120VAC 60Hz
Weight	14.3 lbs
Guarantee	1 Year*

HEAT PRESS

MULTI-FUNCTIONAL HEAT PRESS

INTERCHANGEABLE HEATING ELEMENTS



BJ890

Multi-Function Mug Press

Our BJ890 Multi-function heat press is a versatile heat press that now features the ability to make cone-shaped mugs. Because customers asked, we delivered. The BJ890 comes with 4 interchangeable heating elements that will allow you to imprint on all mugs ranging from the 6oz Espresso mug to the 22oz Beer Stein, and now the 12oz and 17oz Latte mugs.

- Digital time and temperature readout
- Four different heater elements basket style design
- Pressure adjustments on handle e ceramic
- Basket style design
- Transfers to 6 oz., 10 oz., 11 oz., 15 oz., 20 oz., stainless steel and 22 oz. steins
- Prints a full 3.75" x 8.25"
- Transfers to 6 oz., 10 oz., 11 oz., 15 oz., 20 oz., stainless steel and 22 oz. steins

Rated Input Voltage	110v, 50-60Hz
Rated Input Power	350w
Temp. Range	0 - 430°
Time Control Range	0 - 999 seconds
Starting Temp. Range	200 - 380°F
Ending Temp. Range	200 - 430°F

HEAT PRESS
MINI MUG PRESS
 SMALL FOOTPRINT

**BJ880****Mini Mug Press**

The BJ880 Mini Mug Press: is our entry level heat press. Called Mini Mug for its small footprint (a little over 1 square foot) this little workhorse will press virtually any cylindrical mug in our catalog (6 oz. Espresso Mug to our 22 oz. Beer Stein).

- Digital time and temperature readout
- Four different heater elements basket style design
- Pressure adjustments on handle e ceramic
- Basket style design
- Transfers to 6 oz., 10 oz., 11 oz., 15 oz., 20 oz., stainless steel and 22 oz. steins
- Prints a full 3.75" x 8.25"

Rated Input Voltage 110v, 50-60Hz
 Rated Input Power 350w
 Temp. Range 0 - 430°
 Time Control Range 0 - 999 seconds
 Starting Temp. Range 200 - 380°F
 Ending Temp. Range 200 - 430°F

HEAT PRESS
ALL-IN-ONE HEAT PRESS
 EIGHT HEATING ELEMENTS

**BJ901****All-In-One Heat Press**

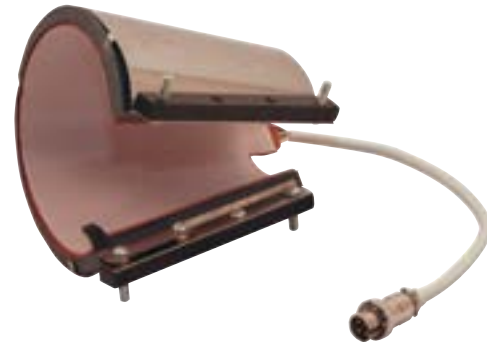
The AA802 comes with 8 individual heating add-ons which can function as a flat press, mug press, plate press, and hat press. This will allow you imprint all sorts of things such as mugs, plates, titles, mouse pads, t-shirts, compact mirrors, cone-shaped latte mugs, and many more!

- Digital time and temperature readout
- Seven different heater elements
- Magnetic brackets to help position heater elements
- Transfers to 6 oz., 10 oz., 11 oz., 15 oz., 20 oz., stainless steel and 22 oz. steins
- Fully adjustable

Rated Input Voltage 110v, 50-60Hz
 Rated Input Power 350w
 Temp. Range 0 - 430°
 Time Control Range 0 - 999 seconds
 Starting Temp. Range 200 - 380°F
 Ending Temp. Range 200 - 430°F



H8510
17 oz Latte Mug Heat Pad
 • For All-In-One Multifunction Press



H8508
12 oz Latte Mug Heat Pad
 • For All-In-One Multifunction Press



97223
3mm Roll Heat Tape - Blue
 • 72 yards = 1pc



97224
3mm Roll Heat Tape - Green
 • 72 yards = 1pc



H8504
6 oz / 10 oz Mug Heat Pad
 • For Multifunction or Mini-Mug Press



H8509
Baseball Cap Heating Pad
 • For All-In-One Multifunction Press



91421
16.53\" Sublimation Roll Paper
 • 16.53 in (420 mm) x 200' / QTY/CASE 2



91425
24\" Sublimation Roll Paper
 • 24 in x 230' / QTY/CASE 1



H8506
8\" Plate Heat Pad
 • For All-In-One Multifunction Press



H8507
10\" Plate Heat Pad
 • For All-In-One Multifunction Press



91420
A4 Sublimation Roll Paper
 • 11.7\" x 8.3\" / QTY/CASE 100 SHEETS/PACK

FAQ

How do I purchase products from Photo USA?

Simply call us at 1-800-996-6022 to purchase our products. We will help you create an account with Photo USA and work closely with you to grow your business. All of your information will be saved for future orders to make ordering with Photo USA as efficient and effortless as possible.

If you already have an account with us, you can place your order directly with your account manager. You can also purchase products through our website www.photomugs.com.

How do I create an account with Photo USA?

When you call us at 1-800-996-6022, a sales representative will walk you through the steps of setting up an account. This will require business information such as company/contact information, shipping address, billing address, e-mail address, and preferred method of payment.

What is the minimum order quantity (MOQ) at Photo USA?

All orders must be at least a one case minimum, unless otherwise specified. Quantities per case usually come in 24, 36, or 48 pieces.

Can I request samples before placing my order with Photo USA?

Samples are available on all of our products to present and market to your customers. We can ship directly to you or blind ship to your customers.

What methods of payment are available at Photo USA?

Orders with Photo USA can be paid via credit card (Visa, Master Card, American Express, and Discover), PayPal, banking wire transfer, and via Net Terms (for those customers that qualify).

How fast can Photo USA ship my order?

All orders are shipped within 24 - 48 hours. Most ground and freight orders can ship the same day if the order is received earlier in the day. If your order received later in the day, it usually ships the next day. Shipping time may be affected by availability of inventory. Photo USA's shipping department is committed to packing and shipping your order as soon as possible to ensure your supplies arrive intact and on time.

Rush services and express shipping options are available for an additional fee.

How does Photo USA ship orders?

Photo USA offers a variety of shipping options. For small domestic orders, we offer FedEx and UPS ground options with the option to use your own FedEx or UPS account number as well. For larger domestic orders, we offer a variety of freight carriers with the option to use your preferred freight carrier of choice as well. For larger international orders, we use shipping vessels that carry 20-foot and 40-foot containers.

Does Photo USA offer after sales support?

Yes, simply call us at 1-800-996-6022 and our dedicated sales and customer support team can help you achieve the best possible results with our products by providing templates and heat, pressure, and time recommendations.

Does Photo USA offer volume pricing?

As a manufacturer, Photo USA currently supplies large quantities worldwide. Photo USA can offer the best prices available on the market by ordering pallets from us domestically or 20-foot and 40-foot containers from us internationally. We are here to assist you to make sure you are taken care of every step of the way. Here's what we promise:

- 500+ products to choose from on domestic purchases. 1000+ products to choose from on international orders.
- The best quality with the lowest prices. The best value guaranteed.
- 20-foot & 40-foot containers available.
- Container order turnaround in as little as 30 days to anywhere on the globe.
- Reliable forecast and supply chain.
- Knowledgeable sales staff will work with you through the entire sales process.
- Please contact our sales department for more information at 1-800-996-6022 or visit www.photomugs.com.

Does Photo USA offer custom decorating services?

To better serve our customers, Photo USA offers high quality custom decorating for all of our products. Our low cost high quality print services are guaranteed. We print and produce the product for you and drop ship it directly to your client saving you money, time, and stress. Special pricing is available for ASI and SAGE members. Rush services and express shipping available for an additional fee.

What are Photo USA's imprint set-up fees?

Photo USA will produce a physical sample using your supplied artwork for as low as a \$75 dollar image set-up fee per artwork per product. Depending on the complexity of the job, such as layout design and color correction, the costs may differ. Please contact us today to get a real time quote for your specific product.

Does Photo USA waive the set-up fee on future orders?

Yes, on future orders of the same artwork on the same product the set-up fee is waived.

What Photo USA's custom decorating turnaround time?

Production will begin after the pre-production sample is approved. Our normal turnaround time after the pre-production sample is approved is roughly 1-2 weeks. Rush order services are available for a minimal fee.

What are Photo USA's art file specifications?

Please note the imprint area for the product to be produced (under specifications on each product page on www.photomugs.com).

- We have state-of-the-art design facilities and currently accept all file formats. We prefer to have the original image, if possible.
- Application files (with layers) to be supplied if we need to make modifications to the image.
- Common file formats supported – EPS, PSD, PDF, AI, CDR, TIF, JPG
- Photographic images should at least 300 dpi at the final size to be printed. Please use the RGB workspace when possible and supply us with RGB mode files for the most vivid output.
- All text should be converted to outlines to avoid font substitution problems.

If you have any other questions, we encourage you to contact our sales department for more information at 1-800-996-6022.



77988



217803



69194



455476



32547



photousa



21377



DRINKWARE

Product name		
Drinkware // Ceramic		
3 oz ORCA Ceramic Mug	20380	06
6 oz ORCA Ceramic Mug	20601	06
10 oz ORCA Ceramic Mug	21010	06
11 oz ORCA Ceramic Mug	21108-8	06
15 oz ORCA Ceramic Mug	21504	06
20 oz ORCA Ceramic Mug	22010	06
14 oz ORCA Statesman Ceramic Mug	21401-1	07
11 oz Black Color Changing Ceramic Mug	21150	08
11 oz Blue Color Changing Ceramic Mug	21151	08
15 oz Black Color Changing Ceramic Mug	21550	08
17 oz Black Color Changing Latte Ceramic Mug	21750	08
11 oz Black Ceramic Mug with White Patch	21145-1	08
15 oz Black Ceramic Mug with White Patch	21530-1	08
11 oz ORCA Two-Tone Ceramic Mug	21111-1	10
11 oz ORCA Rim & Handle Ceramic Mug	21112-1	10
15 oz ORCA Two-Tone Ceramic Mug	21511-1	10
15 oz ORCA Rim & Handle Ceramic Mug	21521-1	11
22 oz ORCA Beer Stein with Gold Trim	22210	13
22 oz ORCA Beer Stein Grey with Blue Trim	22216	13
22 oz ORCA Beer Stein with Gold Trim	22217	13
12 oz ORCA Eco Traveler	21216	17
12 oz ORCA Ceramic Latte Mug	21211	17
17 oz ORCA Ceramic Latte Mug	21716	17
Drinkware // Glass		
1.5 oz Ceramic Shot	20360	09
1.5 oz Ceramic Shot with black inside*	20361	09
11 oz 2-Piece Lover's Ceramic Mug Set	21197	13
10 oz ORCA Frosted Glass Stein	21002-1	13
16 oz ORCA Frosted Glass Stein	22618	13
1.5 oz Shot Glass	20300	09
1.5 oz Shot Glass with Gold Rim	20301	09
2 oz Shot Glass with Gold Rim	20400	09
12 oz Double-Wall Beer Glass with Patch	21213	17
17 oz Pint Glass - White Patch	21763	17
Drinkware // Stainless Steel & Aluminum		
16 oz ORCA Thermos - White	21626	14
16 oz ORCA Thermos - Silver	21628	14
18 oz ORCA Thermal Tumbler -White	21622	15
14 oz Stainless Steel Travel Mug - White Patch	21482	16
14 oz Stainless Steel Travel Mug - Silver	21480	16
14 oz Stainless Steel Travel Mug - White	21483	16
14 oz Economy Stainless Steel Travel Mug - Silver	21484	16
14 oz Economy Stainless Steel Travel Mug - White	21485	16
20 oz Stainless Steel Straw-Top Water Bottle - Silver	23621	16
20 oz Stainless Steel Straw-Top Water Bottle - White	23622	16
17 oz Aluminum Water Bottle - Silver	23601	16
17 oz Aluminum Water Bottle - White	23600	16
20 oz Stainless Steel Water Bottle - White	23622	16
Drinkware // Porcelain		
10 oz ORCA Porcelain Eco-Tumbler	21013	17
Drinkware // Miscellaneous		
Mug Gift Box for 11oz	94424	13
Mug Gift Box for 15oz	94425	13

MOBILE DEVICES

Product name		
Mobile Devices // Apple		
iPhone 6 Polymer Case - Glossy	73406	19
iPhone 6 Polymer Case - Matte	73407	19
iPhone 6 Hardshell Case - Black	73403	19
iPhone 6 Hardshell Case - White	73404	19
iPhone 6 Hardshell Case - Clear	73405	19
iPhone 6 Softshell Case - Black	73400	19
iPhone 6 Softshell Case - White	73401	19
iPhone 6 Softshell Case - Clear	73402	19
iPhone 6 Plus Polymer Case - Glossy	73412	20
iPhone 6 Plus Polymer Case - Matte	73413	20
iPhone 6 Plus Hardshell Case - Black	73409	20
iPhone 6 Plus Hardshell Case - White	73410	20
iPhone 6 Plus Hardshell Case - Clear	73411	20
iPhone 5/5s Polymer Case	73215-73216	21
iPhone 5/5s Rubber Liner Case	73296-73297	21
iPhone 5/5s Hardshell Case	73112-73114	21
iPhone 5c Polymer Case	73127-73128	21
iPad Air Polymer Case	73217-73218	22
iPad Mini Polymer Case	72390-72391	22
iPad 2/3/4 Polymer Case	73214-73215	23
iPad 2/3/4 Hardshell Case	73200-73202	23
Samsung Galaxy S5 Polymer Case	73174-73176	24
Samsung Galaxy S4 Polymer Case	73172-73172	24
Samsung Galaxy S4 Rubber Liner Case	73310-73311	24
Samsung Galaxy S4 Hardshell Case - Black	73192	24
Samsung Galaxy S4 Hardshell Case - White	73193	24
Samsung Galaxy S4 Hardshell Case - Clear	73195	24
Neoprene Laptop Sleeve	72040-72043	25
Laptop Bag with Shoulder Strap	92000-92002	25
Kindle Fire Leatherette Cover - 7"	73306	25
Kindle Fire Hard Cover - 7" Black	73300	23
Kindle Fire Hard Cover - 7" White	73301	23

HOME AND OFFICE

Product name		
Home & Office		
Ceramic Tiles - 1.75"	52200	34
Ceramic Tiles - 4.25"	54401-54403	34
Ceramic Tiles - 6"	56601-56602	34
Ceramic Tiles - 6" x 8"	56800	34
Ceramic Tiles - 8"	58080	34
Ceramic Tile - 8" x 10"	58100	34
Photo Slates	59000-59006	35
Jewelry Boxes - 4.25"	71441-71445	35
Jewelry Boxes - 6"	71661-71665	35
Jewelry Boxes - 6" x 8"	71681-71685	35
Ceramic Ornaments	81002-81003	26
Ceramic Oval Ornament - 3"	83001	26
Ceramic Doily Ornaments	81005-81007	26
Ceramic Doily Pattern Ornament	82002-82003	26
Ceramic Ball Ornaments	84005-84008	26
Pewter Ornaments	82003-82004	26
Compact Mirrors	87004-87015	36
Metal Business Card Case	90001	36
Ceramic Coin Bank	21201	36
Ceramic Pencil Caddy	21610-21612	36
Mouse Pads	72011-72021	37
Cutting Boards	76000-76010	37
Wooden Pencil Holder	40100	34
MDF Keychain	85086-85090	31
Polymer Keychain	85091-85094	31
Ceramic Plate - 10"	61000	40
Ceramic Plate - 8"	67500	40
Notepads	91600-91602	38
Business Card Holder Car	91603	38
Sunshade Set	91240	38
Ceramic Pet Bowls	31006-31013	40
Sublimation Flip Flops	72030-72032	41
Sandstone Drink Coasters	80305-80307	38
Cookie Jars	32000-32002	41
Sublimation Pennant Flags	MR130-MR140	33
Sublimation Puzzle Set	91100-91102	33
Sublimation Necktie	91200-91201	33
Faux Leather Wallet	Z91250-Z91258	28
Top Grain Leather Wallet	Z91259-Z91267	29
Nylon Wallet	Z91268-Z91273	30
Denim Wallet	Z91274	30
Sublimation Blanket	89007	38
Car Mat	91242-91243	39
Door Mat	91241	39
Comfort Mat	91244	39
Backpack with Sublimation Panel	91292-91294	30
Key Rings	85000-85062	32
Sublimation Flags	MR101-MR120	33
Wine Tote Bag	91286-91298	40
Ceramic Vase	32200-32001	40

HEAT PRESSES

Product name		
Heat Presses // Machines		
ARC Multi-Function Heat Press	BJ891	42
Multi-Function Heat Press	BJ890	43
Mini Mug Press	BJ880	44
All-In-One Heat Press	BJ801	45
Heat Presses // Accessories		
12 oz Latte Mug Heat Pad	H8508	46
17 oz Latte Mug Heat Pad	H8510	46
6 oz/10oz Mug Heat Pad	H8504	46
Baseball Cap Heat Pad	H8509	46
8" Plate Heat Pad	H8506	46
10" Plate Heat Pad	H8507	46
3mm Heat Tape - Blue	97223	47
3mm Heat Tape - Green	97244	47
Sublimation Roll Paper - 16.53"	91421	47
Sublimation Roll Paper - 24"	91425	47
A4 Transfer Paper	91420	47



46595 LANDING PKWY
FREMONT, CA 94538

www.photomugs.com
1-800-996-6022

ASI 77988
PPAI 217803

