

CAUTION
SHARP OBJECTS INSIDE

Please follow these instructions. Your antlers will thank you.

**TOOLS NEEDED
OR RECOMMENDED.**

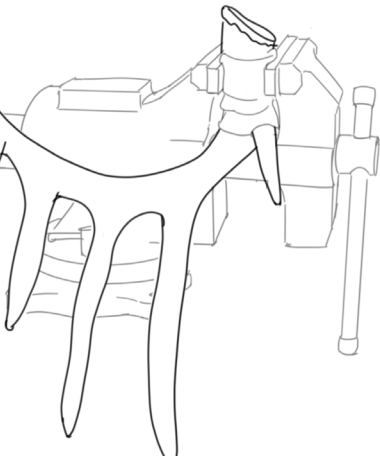
- Power drill
- 3/16" Hex driver
- Rubber mallet
- Safety glasses
- Vise
- Towel (something soft to wrap antlers while drilling)
- **Saw or grinder for exceptionally rough pedicles

Failure to use the recommended products and procedures could result in improper installation or cause serious injury.

PACKAGE INCLUDES.

- Antler Bar
- 5/16" Drill Bit
- Antler Insert
- (Antlers not included)

1 Secure your antler with the pedicle (base) facing in an upright position. (We recommend wrapping something soft around the antler and placing it in a vise).

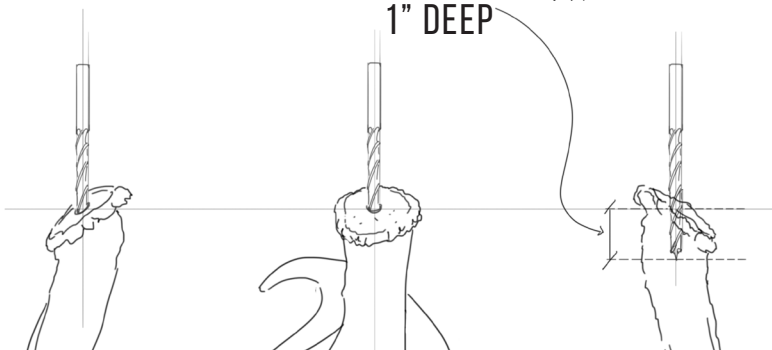
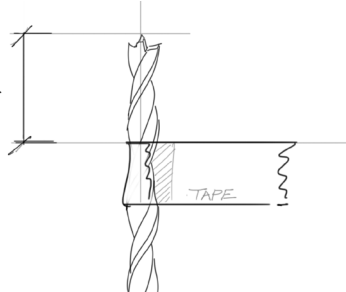


2 Before drilling, mark your drill bit with a 1" marking (2A- shown below). Using the provided 5/16" drill bit, drill a hole starting at the center of the pedicle using the beam as an angle reference. The hole should be 1" in depth. Line up the beam from a few angles prior to drilling (do this to avoid drilling completely through the antler).



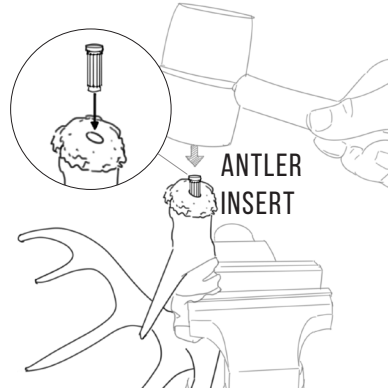
2A MARK THE DRILL BIT AT 1"

We recommend using tape, paint, or a marker to stripe the drill bit at 1" from the tip.



An improperly drilled hole may result in the need to add an adhesive to the antler insert.

3 Starting with the small end, place the antler insert into the drilled hole. Press the insert in until it's snug, and then find a rubber mallet. Using the mallet, gently tap the insert into the antler until the top lip of the insert touches the antler base.

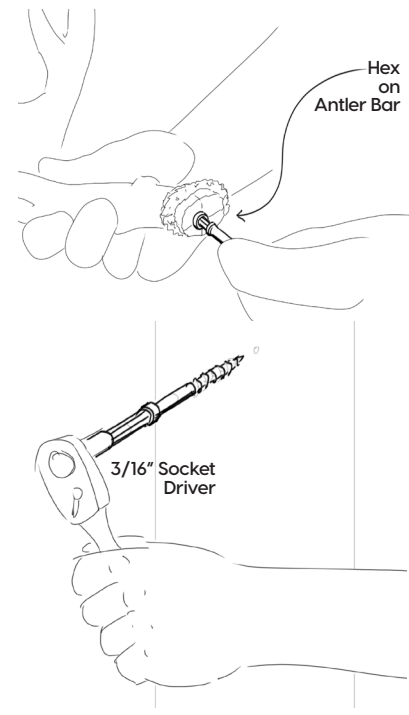


5 Slide the antler onto the hex end of the Antler Bar by aligning the bar with the Antler Insert (mating hex features). Slide the antler down until it's fully engaged on the Antler Bar. Now you can tighten the Antler Bar slightly if needed to adjust your angle. Note: Because this is a hex feature, you have six sides of antler angle adjustment.



4 Find a solid surface to mount your Antler Bar. This Antler Bar can be installed into a flat surface or vertical surface. (Optional: Use a drill with a 1/8" or 3/32" bit to pre-drill a hole into the desired surface). Use a 3/16" Hex driver to install the Antler Bar. (If you're installing it to drywall, be sure to fasten the product to a stud for a secure mount).

Note: It helps to install the Antler Bar into the Antler prior to installation. You can align the Antler Bar at the proper angle prior to installing it into the desired surface.



Visit our website for more information or to see our online installation video.

WWW.RACK-HUB.COM

THANK YOU!

You have now successfully installed your RACK HUB™ product. Remember, your antler(s) can be removed at any time, and we highly encourage that interaction. We do sell extra Antler Inserts in case you have extra antlers.

Keep in touch, and follow us on our social media platforms. We'd love to hear your feedback and see how our products are being used. We strive for quality, and we can only do that with your help. Please use #rackhub when sharing your photos.



MADE IN THE USA

