

Contour is Art
FROM TREE TO TABLE



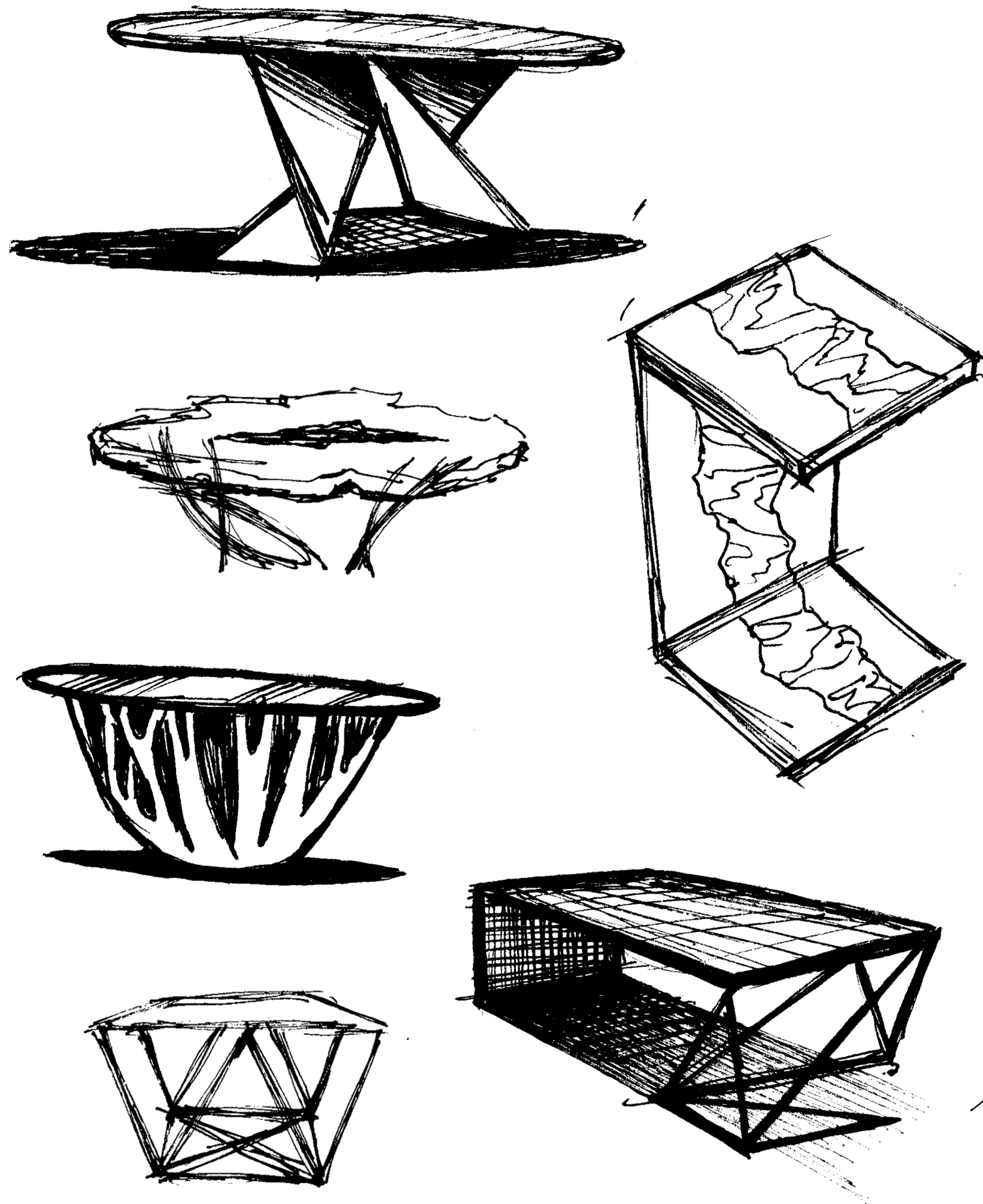
Our Purpose

At Contour Functional Art, we empower communities in East Africa by collaborating with local artisans to design and build custom furniture. We are passionate about creating meaningful, sustainable pieces of functional art.

After months of researching, challenges and breakthroughs, we have developed our dream into a reality. The basis of our concept is that art should not just be seen, it should be experienced. Art should be celebrated. It should be used as a way to enrich our lives and be connected to our memories.

Our art brings life to living spaces and intrigue to office spaces through careful design and flawless craftsmanship. We believe in the seamless connection between design and build, with each drawn line of our work being influential to the next.





Our Approach

These handcrafted pieces of furniture are made from 100% sustainably sourced exotic wood, only found in remote regions of East Africa. We have partnered with a non-profit organization that plants trees across the country of Malawi, for every Contour piece sold. Our design company is based on four core values: Reinvest, Outreach, Sustain and Empower. All of the original designs are created by an award-winning artist and a team of skilled artisans in our workshop in Malawi. They are then shipped to Houston and the compelling story behind each piece is shared with clients in America, and around the world.

Our Inspiration

From sustainably sourcing the exotic trees, to milling each tree by hand into raw slabs. From drying all of the slabs in our kiln, to creating specific designs that celebrate the character of each piece of wood. From fabricating custom steel legs to highlight the beauty of each piece, to finally shipping our completed collection to America. We care deeply about staying true to the narrative of Contour.

Telling meaningful stories through art is our passion, and we look forward to designing and building your brand new piece of functional art. We are proud of the relationships that we have and the unique story that each piece carries along the journey to America.

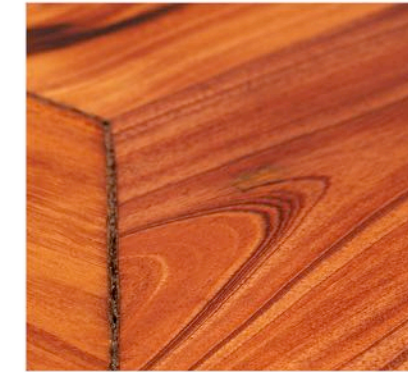


Our Materials

Each Contour piece created is one of a kind. No two pieces will ever look exactly alike. Below is a representation of the materials shown in this Contour Functional Art lookbook.



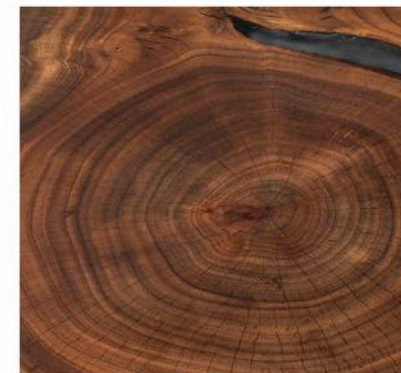
Strangler Fig
Ficus Aurea



African Mahogany
Khaya Anthotheca



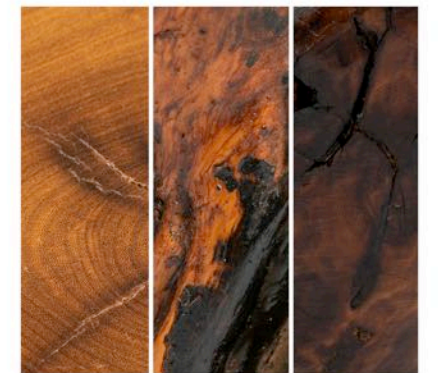
Malaina
Gmelina Arborea



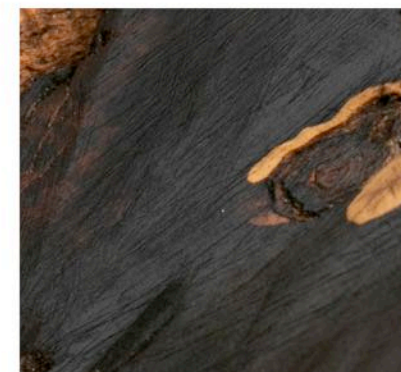
Sycamore Fig
Ficus Sycomorus



African Teak
Pericopsis Angolensis



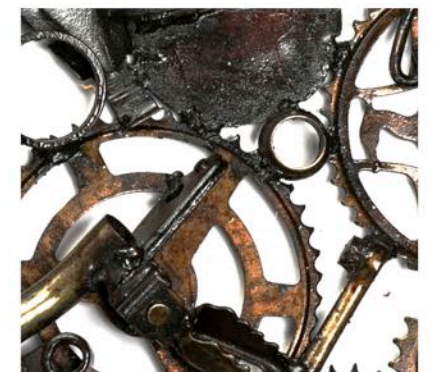
African Acacia
Vachellia Erioloba



African Blackwood
Dalbergia Melanoxylon



Signature Contour steel
rebar repurposed base



Recycled machine
metal parts

African Blackwood 1
Dalbergia Melanoxylon

15"L x 11.5"W x 11"H

African Acacia 1
Vachellia Erioloba

26"L x 17"W x 14"H



Exotic Woods



African Blackwood 1
Dalbergia Melanoxylon

Wooden bowl
15"L x 11.5"W x 11"H | Page 8



African Acacia 1
Vachellia Erioloba

Wooden bowl
26"L x 17"W x 14"H | Page 8



African Acacia 2
Vachellia Erioloba

Wooden stool top | steel base
2"H | 18.5" DIAMETER



African Teak 1
Pericopsis Angolensis

Wooden bowl
12"L x 8.5"W x 7"H

African Mahogany
Khaya Anthotheca

80"L x 40.5"W x 1.2"H



Strangler Fig 1
Ficus Aurea

78"L x 45"W x 4.5"H

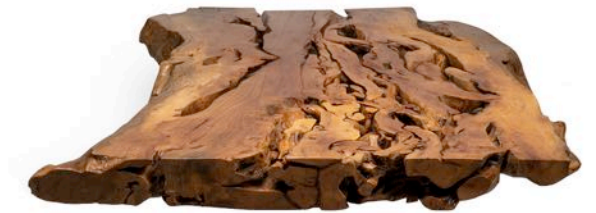


Local Artisans



African Mahogany 1
Khaya Anthotheca

Wooden dining table top | steel base
80"L x 40.5"W x 1.2"H | Page 10-11



Strangler Fig 1
Ficus Aurea

Wooden dining table top
78"L x 45"W x 4.5"H | Page 12



African Blackwood 2
Dalbergia Melanoxylon

Wooden bowl
12"L x 9"W x 6"H



African Acacia 3
Vachellia Erioloba

Wooden bowl
5.5"H | 12" DIAMETER

African Blackwood Planks
Dalbergia Melanoxylon

Far left: 53"L x 35"W x 2"H
Center: 57"L x 22"W x 2"H
Far right: 84"L x 18"W x 2"H

Empowering Design



African Teak 2
Pericopsis Angolensis

Wooden bowl
20"L x 12"W x 13.5"H



African Acacia 3
Vechellia Erioloba

Wooden table top
32"L x 25"W x 3"H

Monkey Bread
Piliostigma Thonningii

45"L x 22"W x 16"H





Sycamore Fig 2
Ficus Sycomorus

36"L x 26"W x 2.25"H

African Mohogany 2
Khaya Anthotheca

29.5"L x 25"W x 2.5"H

Bring Art to Life



Monkey Bread 1
Piliostigma Thonningii

Wooden coffee table base
45"L x 22"W x 16"H | Page 16-17



Sycamore Fig 2
Ficus Sycomorus

Wooden table top | steel base
36"L x 26"W x 2.25"H | Page 18



African Mohogany 2
Khaya Anthotheca

Wooden table top | resin | steel base
29.5"L x 25"W x 2.5"H | Page 18



African Teak 3
Paricopsis Angolensis

Wooden bowl
13"L x 10"W x 6"H

Malaina 1
Gmelina Arborea

22"H | 38" DIAMETER



Handcrafted Shapes



Malaina 1
Gmelina Arborea

Wooden bowl
22"H | 38" DIAMETER | Page 20



African Blackwood 3
Dalbergia Melanoxylon

Wooden bowl
13.5"L x 10.5"W x 8.5"H



African Acacia 4
Vachellia Erioloba

Wooden end table bottom
14"L x 11"W x 14.5"H



Malaina 2
Gmelina Arborea

Wooden bowl
19"H | 35" DIAMETER

African Acacia 5
Vachellia Erioloba

Handcrafted bowl
13"H | 22" DIAMETER



Stunning Form



African Acacia 5
Vachellia Erioloba

Wooden bowl
13"H | 22" DIAMETER | Page 22



Malaina 3
Gmelina Arborea

Wooden coffee table top
44"L x 34"W x 2.75"H | Page 24-25

Malaina 3
Gmelina Arborea

44"L x 34"W x 2.75"H



African Mahogany
Khaya Anthotheca

60"L x 38"W x 3"H



Vibrant Colors



African Teak 4
Pericopsis Angolensis

Wooden bowl
19"L X 9"W x 6.75"H



African Blackwood 4
Dalbergia Melanoxylon

Wooden bowl
13.5"H | 22" DIAMETER



Malaina 3
Gmelina Arborea

Wooden coffee table top
60"L x 45"W x 4"H



African Mahogany 3
Khaya Anthotheca

Wooden bowl
14"L x 10.5"W x 6.5"H

Sycamore Fig 4
Ficus Sycomorus

30.5"L x 27.5"W x 2.75"H



Beautiful Details



Sycamore Fig 4
Ficus Sycomorus

Wooden table top | steel base
30.5"L x 27.5"W x 2.75"H | Page 28/30-31



African Blackwood 5
Dalbergia Melanoxylon

Wooden coffee table base
40.5"L x 38.5"W x 16.5"H

Sycamore Fig 4
Ficus Sycomorus

30.5"L x 27.5"W x 2.75"H



African Blackwood 5
Dalbergia Melanoxylon

15"L x 11.5"W x 11"H



Skilled Creation



African Blackwood 6
Dalbergia Melanoxylon

Wooden bowl
15"L x 11.5"W x 11"H | Page 32



African Teak 5
Pericopsis Angolensis

Wooden coffee table top | steel base
65"L x 20"W x 1.5"H



African Acacia 6
Vachellia erioloba

Wooden bowl
13"L x 8"W x 5.5"H



African Teak 6
Pericopsis Angolensis

Wooden bowl
12"L x 8.5"W x 7"H

Unique Materials



African Blackwood 7
Dalbergia Melanoxylon

Wooden bowl
10"L x 6.5"W x 5"H



African Teak 7
Pericopsis Angolensis

Wooden bowl
22"L x 12"W x 13.5"H



African Teak 8
Pericopsis Angolensis

Wooden bowl
14.5"L x 9.5"W x 8.5"H



African Blackwood 8
Dalbergia Melanoxylon

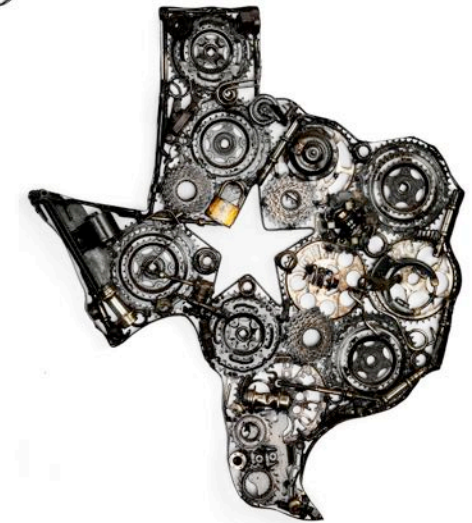
Wooden bowl
11.5"L x 7"W x 5.5"H

Storytelling



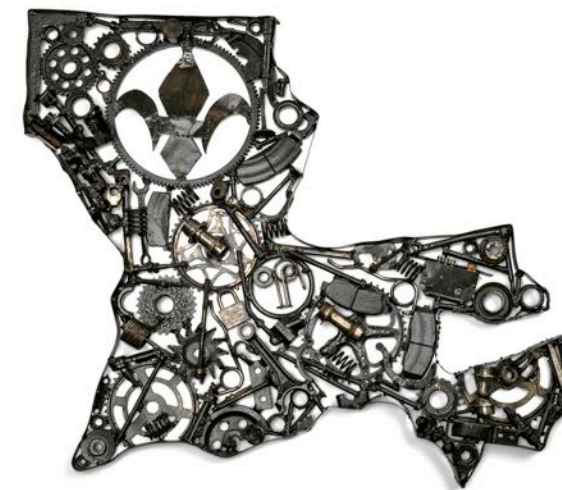
African Metal Map
Recycled machine metal parts

Handcrafted structure
46.5"L x 40.75"W x 1.5"H



Texas Metal Map
Recycled machine metal parts

Handcrafted structure
39"L x 34"W x 1.5"H



Louisiana Metal Map
Recycled machine metal parts

Handcrafted structure
31.5"L x 39.5"W x 1.5"H



Commissioned Art Piece
Recycled machine metal parts

Create your own design
Size dependent on design request



Our Chandeliers

Contour collaborates with local artisans in East Africa to handcraft one of a kind artwork that can be admired, but more importantly, can be used as functional works of art.

On Likoma Island, off the coast of Malawi, recycled tumbled glass and copper are beautifully handcrafted into various pieces. Each piece of glass is found on the shores of Lake Malawi.

Our Process

Glass bottles from surrounding lodges and villages are collected, broken into pieces and tumbled in a homemade glass-tumbler. This newly smooth glass is hand-wrapped in copper or steel wire and attached to in-house welded frames, creating distinctive chandeliers, pendants, wall lights and lampshades.

The bespoke light fixtures are meticulously handcrafted by women who live on the island. No two pieces of art are the same. Similar to how no two artisans are the same.

Repurposed Art



African Chandelier
Repurposed materials

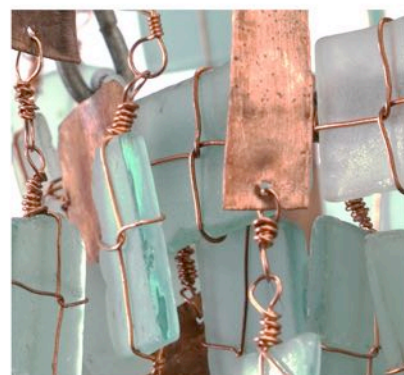
Glass chandelier
24"L x 19"W



Recycled tumbled glass,
and steel wire

African Chandelier
Repurposed materials

Glass chandelier
24"L x 19"W



Recycled tumbled glass,
and copper wire



Contour is Regal
LEGACY BEYOND LUXURY