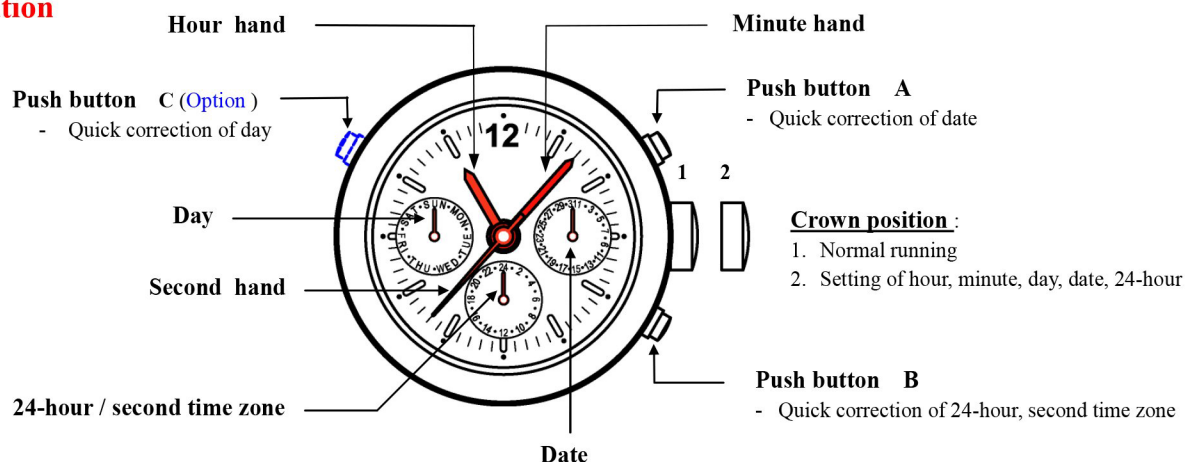


Instruction Manual

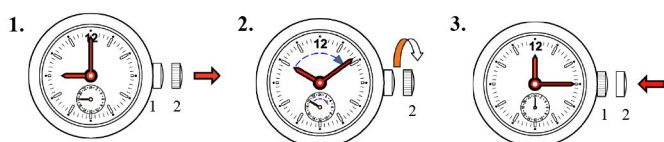
Calibre : ISA 9238A2

Function : Day, Date, 24-hour / second time zone

Illustration

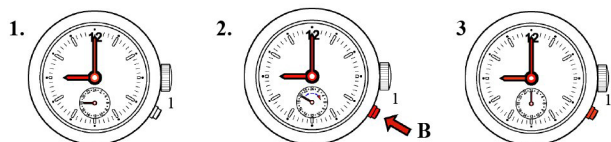


A. Set the time – Hour, Minute, and 24-Hour



1. Pull the crown out to position 2.
2. Turn the crown clockwise to set the hour, minute and 24-hour hands to the desired time.
3. Push the crown back to position 1.

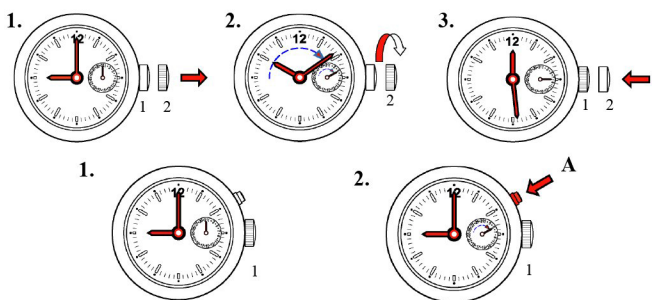
B. Set the Second Time Zone



1. Set the crown at position 1.
2. Press B step-by-step to advance the hour hand of the second time zone until the desired time is set..
3. Stop pressing the button after finished the setting.

!! Attention !!: When using push button B to set the second time zone hour, the centre minute hand must be set to between 55th minute and 05th minute at any hour.

C. Set the Date



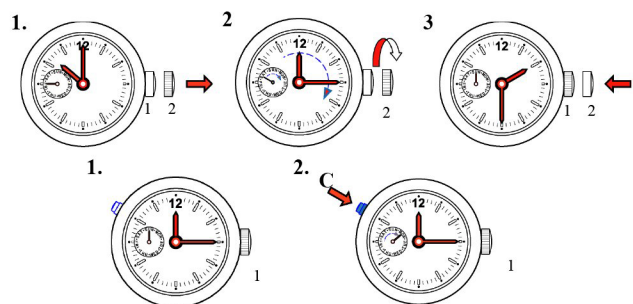
1. Pull the crown out to position 2.
2. Turn the crown clockwise. Continue to turn the crown until the desired date is set.
3. Push the crown back to position 1.

Quick correction of Date :

1. Set the crown at position 1.
2. Press A step-by-step to advance the date until the desired date is set..

!! Attention 注意 !!: The date advances at 00:00 midnight, not 12:00 noon.

D. Set the Day



1. Pull the crown out to position 2.
2. Turn the crown clockwise to advance the day hand until the desired day is set. The day hand will advance one day when 04:00 in the morning is reached.
3. Push the crown back to position 1.

Quick correction of Day :

1. Set the crown at position 1.
2. Press C twice to advance the day hand by one step, until the desired day is set.

!! Attention !!: Do not use Quick Correction to set the Day between 22:00 at night and 06:00 in the morning.

Battery : 371 – SR920SW