

BACKplus®



Foot and Leg Massager



Redfern

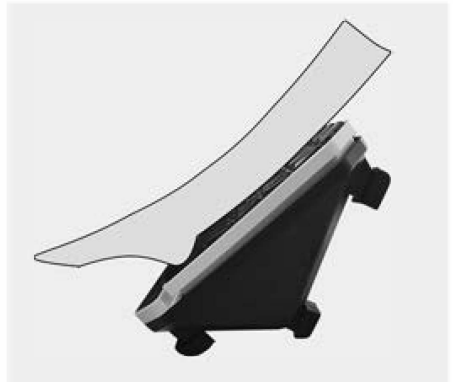
Smart Products for Home + Health

Please read this manual carefully before using this product.

Using Backplus® Foot and Leg Massager

Excellent for Legs & Calves

Easy to use, simply tilt the massager to place your Legs & calves. The BACKplus® Massager soothes and aids to stimulate blood flow to the legs to help relax the calf muscles.



Bottom of Foot



When using the ball to soothe the arch of your foot, we recommend to wear socks. Simply move your foot slowly up and down in the arch until you are feeling relaxed.

Relaxation techniques for fatigued feet & ankles

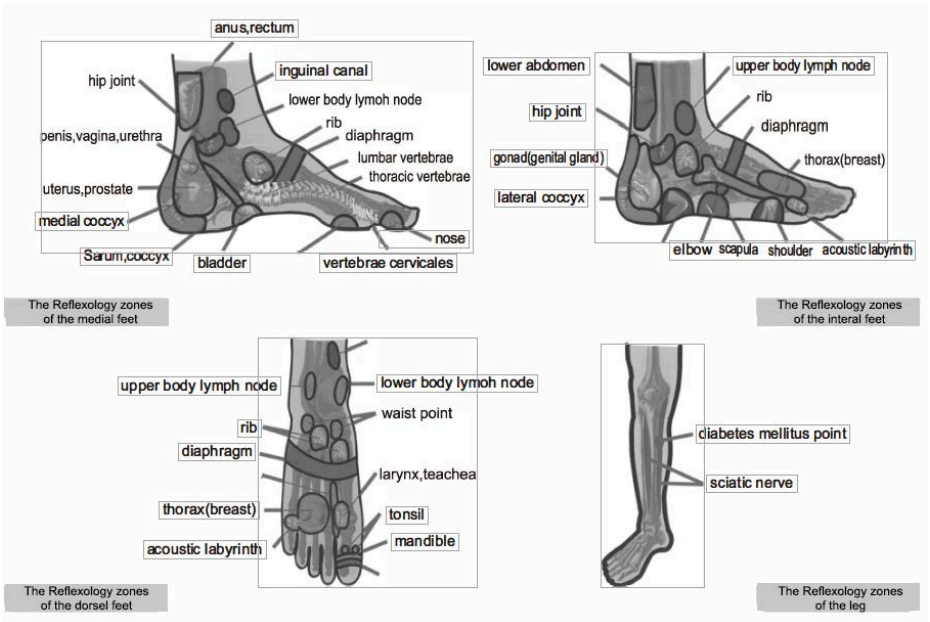


Soothing Foot Massage

Let the textured pad on the Massager target your reflexology points. Choose from 9 preset modes or use it manually with up to 30 speeds to customize exactly as you need. Adjust your massage time from 1 -15 minutes. Use the remote control so you don't have to bend down. When finished, the remote magnetizes to the massager for easy storage. Use with or without shoes.

Important Safety Instructions

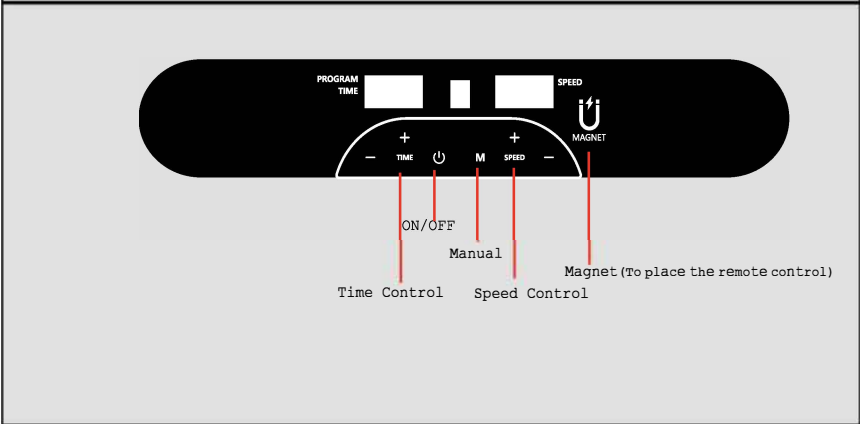
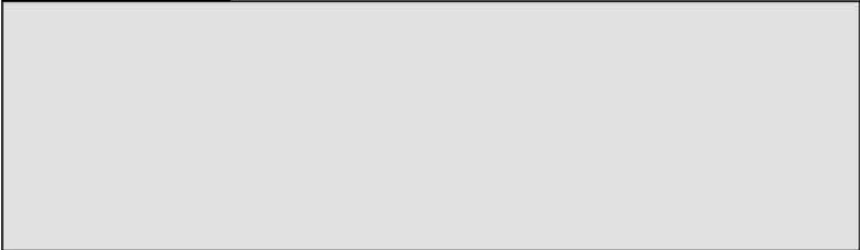
1. Use item only for its intended use.
2. This item is intended for household and residential use only. This product is not approved for commercial applications.
3. To protect against a risk of electric shock, do not immerse the item in water or other liquids.
4. The item should always be turned off before plugging or unplugging from power surge protected bar. Never yank the cord to disconnect from power surge protected bar, instead grasp plug and pull to disconnect.
5. Do not operate item with a damaged cord, or if the item has been dropped or damaged.
6. If cord is damaged it must be replaced by manufacturer, its service agent or similarly qualified technician in order to avoid a hazard.
7. To avoid the risk of electric shock, do not disassemble the item. Take or ship to a qualified service technician for examination and repair. Incorrect reassembly or repair can cause a risk of fire, electric shock or injury to persons when item is used.
8. Not intended for use by children. Close supervision is necessary for any item being used near children. Unsupervised use can result in fire or personal injury. Do not leave item unattended while plugged in.



DISCLAIMER: Content is for reference purposes and is not intended to substitute any advice given by a physician, pharmacist, or other licensed health-care professional. You should not use this information as self-diagnosis or for treating a health problem or disease. Contact your health-care provider immediately if you suspect that you have a medical problem. Redfern Enterprises assumes no liability for inaccuracies or misstatements about products.

Technical specifications

| | | |
|--------------|-------------------------------|---------|
| Voltage: | 110V | 50/60Hz |
| Input power: | 48W | |
| Time: | 15Mins | |
| Rated load: | 100kgs | |
| Weight: | 5kgs | |
| Size: | 38×30.5×25.5cm | |
| Model: | Backplus® Foot & Leg Massager | |





Operational instructions

- 1.Preset modes: 0-9
- 2.Timer: 1min-15mins (1 min increments)
- 3.Manual speed levels:1-30
- 4.ON/OFF
- 5.< & >:Change the Program, Speed levels and time.
- 6.∧ & ∨ :Choose Program,Speed and Time to change.

1 Year Limited Warranty

This product is warrantied for 1 year from the original date of purchase, against defects in materials and/or workmanship when utilized for normal household use. During this period if the unit is proven defective it will be repaired or replaced at the discretion of the authorized service technician.

The unit shall be returned, by original purchaser, freight prepaid with proof of original purchase date and \$39.99 return shipping/handling charges included. Redfern Enterprises does not accept C.O.D.'s and will not reimburse for any fees associated with the return or shipping of the item.

This warranty does not apply to any defect arising from a buyers misuse, negligence, failure to follow instructions, use on current or voltage other than that stamped on the unit or repairs not authorized by a Redfern Ent. technician will null and void the warranty.

If you believe that your product is defective, contact Redfern Enterprises Customer Services Department:

CANADA

101-127 Commercial Drive,
Calgary, AB T3Z 2A7

TF: 1-877-387-7770 (Toll Free) Local 403.735.5130
info@redferment.com www.redferment.com

UNITED STATES

4168 N North Pecos Road, Ste 102
Las Vegas, Nevada, 89115

1-877-462-5757 ext. 1 (Toll Free) Local 703.795.3314
infous@redferment.com www.redfermentus.com

For Service you must first obtain a Return Authorization Number (RA Number) Original Proof of purchase must be provided to customer service for Warranty. Product must be shipped prepaid, with RA# on it and return shipping of \$39.99. Return Shipping is subject to change as the rates change.