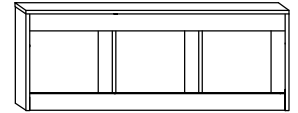




MXS-20

PÓLKA

→ 110 × 42 × 22



x 13



(a)

x 18



(b)

x 3



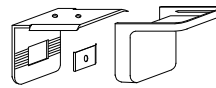
(c)

x 21



(d)

x 3 kpl.



(e)

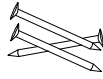
x 6

(6,2x13)

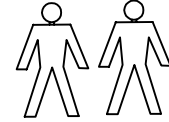
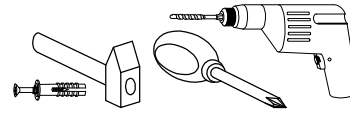


(f)

x 40



(g)



30 min

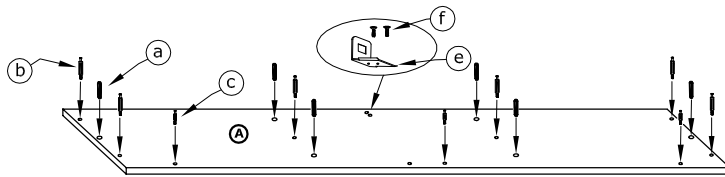
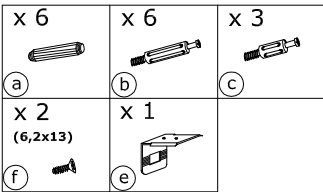


1 - FAZY MONTAŻU

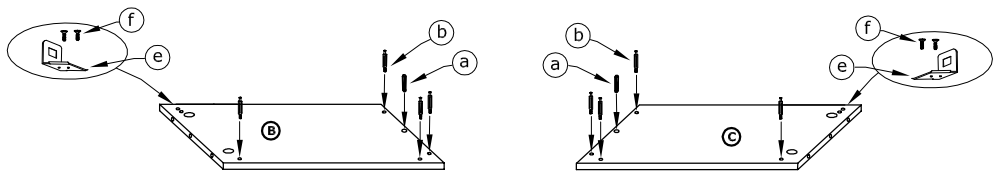
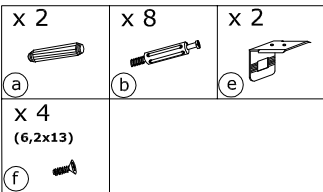
A - OZNACZENIE ELEMENTÓW

a - OZNACZENIE AKCESORIÓW

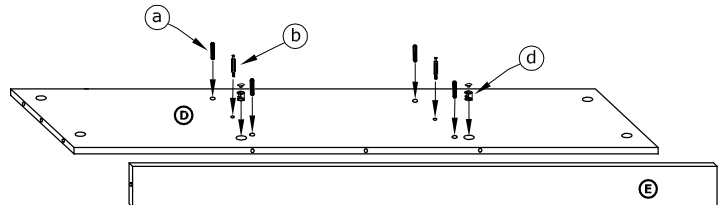
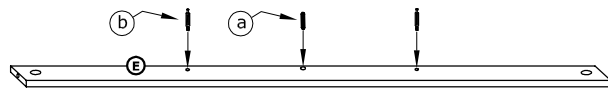
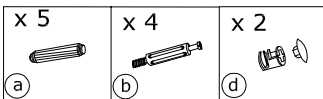
1



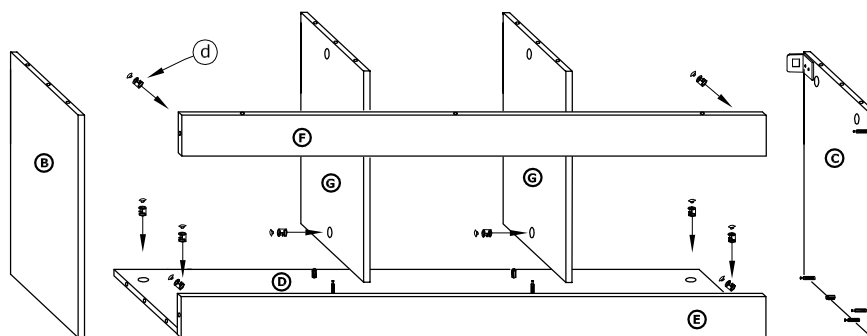
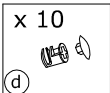
2



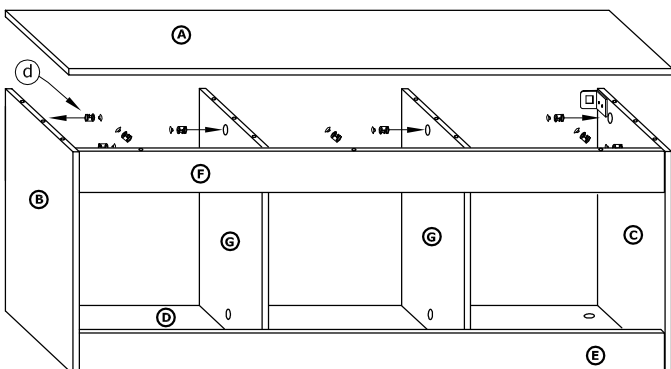
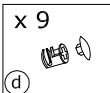
3



4



5



6

