



ACKERMANN'S APPAREL

Fashion for Work



# CORPORATE CLOTHING 2018

BUSINESS CASUAL - SOPHISTICATED - PERFORMANCE - ECLIPSE - CONCEPT - ONE - SHIRT & BLOUSE - MIX & MATCH

# SHIRT & BLOUSE

## COLLECTION



**PREMIUM COTTON**  
Collection

**Pages 100 - 109**  
Premium Cotton

Collection of men's and ladies' shirts and blouses in premium cotton fabric. Slim and classic fit options available.



**CREPE DE CHINE**  
Collection

**Pages 110 - 117**  
Crepe de Chine

Beautiful crepe de chine blouses in a variety of colours and designs

### **NEW FOR 2018!**

- Capri & Siena blouses, page 111
- Firenze & Venezia blouses, page 112
- New Navy colourway, pages 112 - 115



**STRETCH TOPS**  
Collection

**Pages 118 - 119**  
Stretch Tops

Superb quality ladies' stretch tops offering day to day practicality.

Our beautiful Shirt & Blouse Collection continues to go from strength to strength. The collection offers a superb range of coordinating shirts and blouses, in a variety of beautiful fabrics, fits and styles. 2018 brings new styles and a new colour in our crepe de chine ladies' blouses, along with two new colourways and styles in our cotton rich shirts and blouses. Designed to complement our suiting collections, our shirts and blouses are manufactured to our usual high standard and offer a stock supported solution for all corporate arenas.



**STRETCH COTTON BLEND**  
Collection

**Pages 120 - 122**  
Stretch Cotton Blend

A stretch blend fabric which gives great wearer comfort. Slim fit styles available.



**COTTON RICH**  
Collection

**Pages 123 - 133**  
Cotton Rich

A great range of high quality shirts and blouses with a large range of styles, colours and fits.

**NEW FOR 2018!**

- Colours Grey and Navy in best-selling styles, pages 123 - 127
- Parma & Modena blouses, page 123



**BUSINESS ESSENTIALS**  
One Collection Value Range

**Pages 134 - 139**  
Business Essentials

Business essentials - premium quality shirts and blouses offering fantastic performance and value for money.



# PREMIUM COTTON



## 100% SUPERFINE COTTON - HERRINGBONE WEAVE - EASY IRON

MEN'S **ANDORA** Classic fit, Double cuff **ALTARE** Classic fit, Single cuff **PRATO** Slim fit, Double cuff

- Double cuff with complementary silk cuff knots (except Altare)
- Taped seams
- Removable metal collar stiffeners
- Men's extra long sleeve available



**ANDORA Shirt**  
Classic fit, Double cuff

**Codes & Colours:**

- 7656A White Herringbone
- 7656AL White Herringbone  
Extra long sleeve 36.5"
- 7656B Blue Herringbone
- 7656BL Blue Herringbone  
Extra long sleeve 36.5"
- 7656F Pink Herringbone
- 7656G Lilac Herringbone

**Sizes:** 14.5"- 20"

\* Extra long sleeve 36.5" at size 15.5"

**ALTARE Shirt**  
Classic fit, Single cuff

**Codes & Colours:**

- 7655A White Herringbone
- 7655AL White Herringbone  
Extra long sleeve 36.5"
- 7655B Blue Herringbone
- 7655BL Blue Herringbone  
Extra long sleeve 36.5"

**Sizes:** 14.5"- 20"

\* Extra long sleeve 36.5" at size 15.5"

**PRATO shirt**  
Slim fit, Double cuff

**Codes & Colours:**

- 7720A White Herringbone
- 7720B Blue Herringbone

**Sizes:** 14.5"- 18"



**ANDORA Shirt**  
Classic fit, Double cuff



**ALTARE Shirt**  
Classic fit, Single cuff



**PRATO Shirt**  
Slim fit, Double cuff

# SLIM FIT DOUBLE CUFF





SEMI FITTED  
DOUBLE CUFF

# PREMIUM COTTON



## 100% SUPERFINE COTTON - HERRINGBONE WEAVE - EASY IRON

WOMEN'S **VILLETA** Semi fitted, Double cuff

WOMEN'S **OZZERO** Semi fitted, Short sleeve

- Double cuff with complementary silk cuff knots (except Ozzero)
- Taped seams



**VILLETA Blouse**  
Semi fitted, Double cuff



**OZZERO Blouse**  
Semi fitted, Short sleeve

**VILLETA Blouse**  
Semi fitted, Double cuff

**Codes & Colours:**  
2247A White Herringbone  
2247B Blue Herringbone

**Sizes:** 6 - 24 regular

**OZZERO Blouse**  
Semi fitted, Short sleeve

**Codes & Colours:**  
2249A White Herringbone  
2249B Blue Herringbone

**Sizes:** 6 - 24 regular



**VILLETA Blouse**  
(Semi fitted, Double cuff)



**OZZERO Blouse**  
(Semi fitted, Short sleeve)



# PREMIUM COTTON



## 100% SUPERFINE COTTON - HERRINGBONE WEAVE - EASY IRON

MEN'S **ANDORA** Classic fit, Double cuff

WOMEN'S **PROSECCO** Long sleeve, Single cuff

WOMEN'S **CHIANTI** Semi fitted, Short sleeve

- Double cuff with complementary silk cuff knots (men's Andora)
- Taped seams
- Fly front (ladies' Prosecco and Chianti)



**ANDORA Shirt**  
Classic fit, Double cuff

**Codes & Colours:**

- 7656A White Herringbone
- 7656AL White Herringbone  
Extra long sleeve 36.5"
- 7656B Blue Herringbone
- 7656BL Blue Herringbone  
Extra long sleeve 36.5"
- 7656F Pink Herringbone
- 7656G Lilac Herringbone

**Sizes:** 14.5" - 20"

\* Extra long sleeve 36.5" at size 15.5"

**PROSECCO Blouse**  
Long sleeve, Single cuff, button up collar

**Codes & Colours:**

- 2283F Pink Herringbone
- 2283G Lilac Herringbone

**Sizes:** 6R - 24R

**CHIANTI Blouse**  
Semi fitted, Short Sleeve, button up collar

**Codes & Colours:**

- 2284F Pink Herringbone
- 2284G Lilac Herringbone

**Sizes:** 6R - 24R



**ANDORA Shirt**  
Classic fit, Double cuff



**PROSECCO Blouse**  
(Long sleeve, Single cuff)



**CHIANTI Blouse**  
(Semi fitted, Short sleeve)





ANDORA Shirt



CHIANTI Blouse



PROSECCO Blouse

# PREMIUM COTTON



100% SUPERFINE COTTON - EASY IRON - LONG SLEEVE

WOMEN'S **TREVISO** Semi fitted, Single cuff

- Single 3 button cuff
- Classic button up collar



## SEMI FITTED 3 BUTTON CUFF



A. White

B. Blue



**TREVISO Blouse**  
Semi fitted, Single cuff

**Codes & Colours:**

2244A White  
2244B Blue

**Sizes:** 6 - 24 regular



**TREVISO Blouse**  
Semi fitted, Single cuff

# PREMIUM COTTON



100% SUPERFINE COTTON - EASY IRON - LONG SLEEVE

MEN'S **CHESTER** Classic fit, Double cuff

MEN'S **CHEADLE** Classic fit, Single cuff

- Taped seams
- Removable metal collar stiffeners
- Men's extra long sleeve available



**CHESTER** Shirt  
Classic fit, Double cuff

**Codes & Colours:**

7642A White

7642B Blue

**Sizes:** 14.5" - 20"



**CHESTER** Shirt  
Classic fit, Double cuff

**CHEADLE** Shirt  
Classic fit, Single cuff

**Codes & Colours:**

7641A White

7641AL White  
Extra long sleeve 36.5"

7641B Blue

**Sizes:** 14.5" - 20"

\* Extra long sleeve 36.5" at size 15.5"



**CHEADLE** Shirt  
Classic fit, Single cuff

## CLASSIC FIT

# PREMIUM COTTON



100% SUPERFINE COTTON - EASY IRON - LONG SLEEVE

MEN'S **CHELFORD** Slim fit, Double cuff

- Taped seams
- Removable metal collar stiffeners



**CHELFORD Shirt**  
Slim fit, Double cuff

**Codes & Colours:**

7643A White

7643B Blue

**Sizes:** 14.5" - 18"



## SLIM FIT DOUBLE CUFF



**CHELFORD Shirt**  
Slim fit, Double cuff

# PREMIUM COTTON



100% SUPERFINE COTTON - EASY IRON - LONG SLEEVE

MEN'S CHELSEA Slim fit, Single cuff

- Taped seams
- Removable metal collar stiffeners



CHELSEA Shirt  
Slim fit, Single cuff

Codes & Colours:

- 7762A White
- 7762B Blue

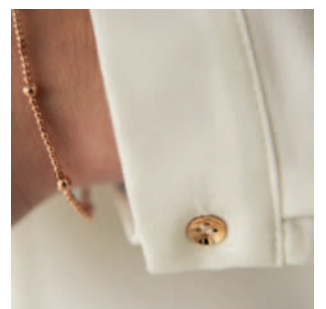
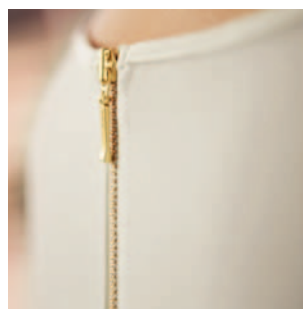
Sizes: 14.5" - 18"



## SLIM FIT SINGLE CUFF



CHELSEA Shirt  
Slim fit, Single cuff



# CREPE DE CHINE



**WHITE & CREAM - 94% POLYESTER / 6% ELASTANE - EASY CARE**

WOMEN'S **CAPRI / SIENA** Long and Short Sleeve with Collar and Fly Front with Button Detail

- 94% Polyester / 6% Elastane
- Sizes: 6R - 30R
- Long & Short sleeve women's blouses with fly front with button detail
- Central back pleat
- Metallic button cuff (Capri)
- Easy care, machine washable at 30°

**NEW  
FOR  
2018!**



Sizes: 6R - 30R

**CAPRI Blouse**  
Long sleeve

**Codes & Colours:**  
2300A White  
2300B Cream

**Sizes:**  
6R - 30R



**CAPRI Blouse**  
Long sleeve

**SIENA Blouse**  
Short sleeve

**Codes & Colours:**  
2301A White  
2301B Cream

**Sizes:**  
6R - 30R



**SIENA Blouse**  
Short sleeve

WOMEN'S **RIOLA / FELINA** Long and Short Sleeve with Round Neck and Front Pleat Detail

- 94% Polyester / 6% Elastane
- Sizes: 6R - 30R
- Long & Short sleeve women's blouses, round neck, front pleat detail, bust darts
- Single gold button cuff (Riola)
- Rear gold zip detail
- Easy care, machine washable at 30°



Sizes: 6R - 30R

**RIOLA Blouse**  
Long sleeve

**Codes & Colours:**  
2264A White  
2264B Cream

**Sizes:**  
6R - 30R



**RIOLA Blouse**  
Long sleeve

**FELINA Blouse**  
Short sleeve

**Codes & Colours:**  
2265A White  
2265B Cream

**Sizes:**  
6R - 30R



**FELINA Blouse**  
Short sleeve

# CREPE DE CHINE



## SOLID COLOURS - 100% POLYESTER - EASY CARE

WOMEN'S **FIRENZE** Long Sleeve with Collar and Fly Front with Button Detail

WOMEN'S **VENEZIA** Short Sleeve with Collar and Fly Front with Button Detail

- 100% Polyester with mechanical stretch
- Sizes: 6R - 30R
- Long & Short sleeve women's blouses with fly front with button detail
- Central back pleat
- Metallic button cuff (Firenze)
- Easy care, machine washable at 30°

# NEW FOR 2018!



WOMEN'S **FIRENZE** Long sleeve **Sizes:** 6R - 30R

**Codes & Colours:**

Fuchsia  
2298A

Sky Blue  
2298B

Navy  
2298J

WOMEN'S **VENEZIA** Short sleeve **Sizes:** 6R - 30R

**Codes & Colours:**

Fuchsia  
2299A

Sky Blue  
2299B

Navy  
2299J



**FIRENZE Blouse**  
(Long sleeve)



**VENEZIA Blouse**  
(Short sleeve)







# CREPE DE CHINE



SOLID COLOURS - 100% POLYESTER - EASY CARE

WOMEN'S **ROMA** Long sleeve

WOMEN'S **VERONA** Short sleeve

- 100% Polyester with mechanical stretch
- Sizes: 6R - 30R
- Long & Short sleeve women's blouses, round neck, front pleat detail, bust darts
- Single gold button cuff (Roma)
- Rear gold zip detail
- Easy care, machine washable at 30°

**NEW!**  
Navy colourway

WOMEN'S **ROMA** Long sleeve **Sizes:** 6R - 30R



Codes & Colours:

Fuchsia  
2279A

Sky Blue  
2279B

Burgundy  
2279C

Black  
2279D

Royal Blue  
2279E

Navy  
2279J



**ROMA Blouse**  
(Long sleeve)

WOMEN'S **VERONA** Short sleeve **Sizes:** 6R - 30R



Codes & Colours:

Fuchsia  
2280A

Sky Blue  
2280B

Burgundy  
2280C

Black  
2280D

Royal Blue  
2280E

Navy  
2280J



**VERONA Blouse**  
(Short sleeve)



# CREPE DE CHINE



CO-ORDINATING DESIGNS - 100% POLYESTER - EASY CARE

WOMEN'S **ROMA** Long sleeve

WOMEN'S **VERONA** Short sleeve

- 100% Polyester with mechanical stretch
- Sizes: 6R - 30R
- Long & Short sleeve women's blouses, round neck, front pleat detail, bust darts
- Single gold button cuff (Roma)
- Rear gold zip detail
- Easy care, machine washable at 30°

WOMEN'S **ROMA** Long sleeve **Sizes: 6R - 30R**



ROMA Blouse  
Long sleeve

Codes & Colours:

Royal Blue/Navy  
2279H

Sky Blue/Navy  
2279F

Burgundy/Navy  
2279G

Black/White  
2279I

WOMEN'S **VERONA** Short sleeve **Sizes: 6R - 30R**



VERONA Blouse  
Short sleeve

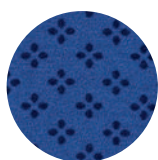
Codes & Colours:

Royal Blue/Navy  
2280H

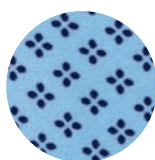
Sky Blue/Navy  
2280F

Burgundy/Navy  
2280G

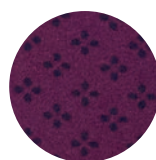
Black/White  
2280I



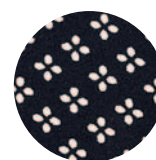
H. Royal Blue/Navy



F. Sky Blue/Navy



G. Burgundy/Navy



I. Black/White

# STRETCH TOPS



BLACK & WHITE - 95% VISCOSE / 5% ELASTANE - EASY CARE

WOMEN'S **MIRA** 3/4 sleeve

WOMEN'S **SASSA** Short sleeve

- 95% Viscose / 5% Elastane
- Sizes: XS, S, M, L, XL, XXL
- 3/4 & Short sleeve women's stretch tops
- Machine washable at 30°



**MIRA Stretch Top**  
3/4 sleeve

**Codes & Colours:**

2266A White

2266D Black

**Sizes:**

XS, S, M, L, XL, XXL



**SASSA Stretch Top**  
Short sleeve

**Codes & Colours:**

2267A White

2267D Black

**Sizes:**

XS, S, M, L, XL, XXL



**MIRA Stretch Top**  
3/4 sleeve



**SASSA Stretch Top**  
Short sleeve



# STRETCH COTTON BLEND



57% POLYESTER / 39% COTTON / 4% ELASTANE - SEMI FITTED

WOMEN'S **TREVI** Semi fitted, Long sleeve, Single cuff

WOMEN'S **SOAVE** Semi fitted, Short sleeve

- Fly front
- Rounded collar
- Single button cuff (Trevi)



**TREVI Blouse**  
Semi fitted, Single cuff

**Codes & Colours:**  
2268A White  
2268B Sky Blue  
2268D Black

**Sizes:** 6 - 24 regular



**TREVI Blouse**  
Semi fitted, Single cuff

**SOAVE Blouse**  
Semi fitted, Short sleeve

**Codes & Colours:**  
2269A White  
2269B Sky Blue  
2269D Black

**Sizes:** 6 - 24 regular



**SOAVE Blouse**  
Semi fitted, Short sleeve



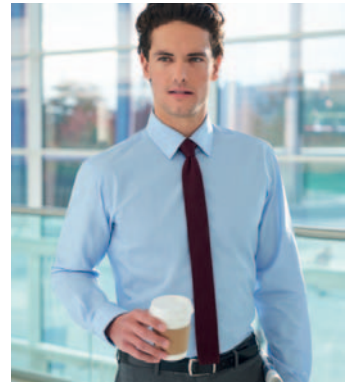
# STRETCH COTTON BLEND



57% POLYESTER / 39% COTTON / 4% ELASTANE - SLIM FIT - LONG SLEEVE

MEN'S PISA Slim fit, Long sleeve, Single cuff

- Single 2 button cuff
- Twin rear darts for defined silhouette



PISA Shirt  
Slim fit, Single cuff

Codes & Colours:

- 7721A White
- 7721B Sky Blue
- 7721D Black

Sizes: 14.5" - 18"



PISA Shirt  
Slim fit, Single cuff

## SLIM FIT

SINGLE CUFF

# STRETCH COTTON BLEND



57% POLYESTER / 39% COTTON / 4% ELASTANE - EASY IRON - LONG SLEEVE

WOMEN'S **FRANCA** Semi fitted, Single cuff

- Fly front
- Contrast White rounded collar and contrast White single button cuff



SEMI FITTED  
CONTRAST SINGLE CUFF

**FRANCA Blouse**  
Semi fitted, Single cuff

**Codes & Colours:**  
2251A White with front panel stripe

**Sizes:** 6 - 24 regular



A. White with front panel stripe



**FRANCA Blouse**  
Semi fitted, Single cuff

# COTTON RICH



55% COTTON / 45% POLYESTER - EASY IRON

WOMEN'S **PARMA** Semi fitted, Long sleeve WOMEN'S **MODENA** Semi fitted, Short sleeve

- Fly front
- Button up collar

# NEW FOR 2018!



**PARMA Blouse**  
Semi fitted, Long sleeve

- Codes & Colours:**  
2295A White  
2295E Blue  
2295G Grey  
2295H Navy

**Sizes:** 6 - 24 regular



**PARMA Blouse**  
Semi fitted, Long sleeve

**MODENA Blouse**  
Semi fitted, Short sleeve

- Codes & Colours:**  
2296A White  
2296E Blue  
2296G Grey  
2296H Navy

**Sizes:** 6 - 24 regular



**MODENA Blouse**  
Semi fitted, Short sleeve

# COTTON RICH



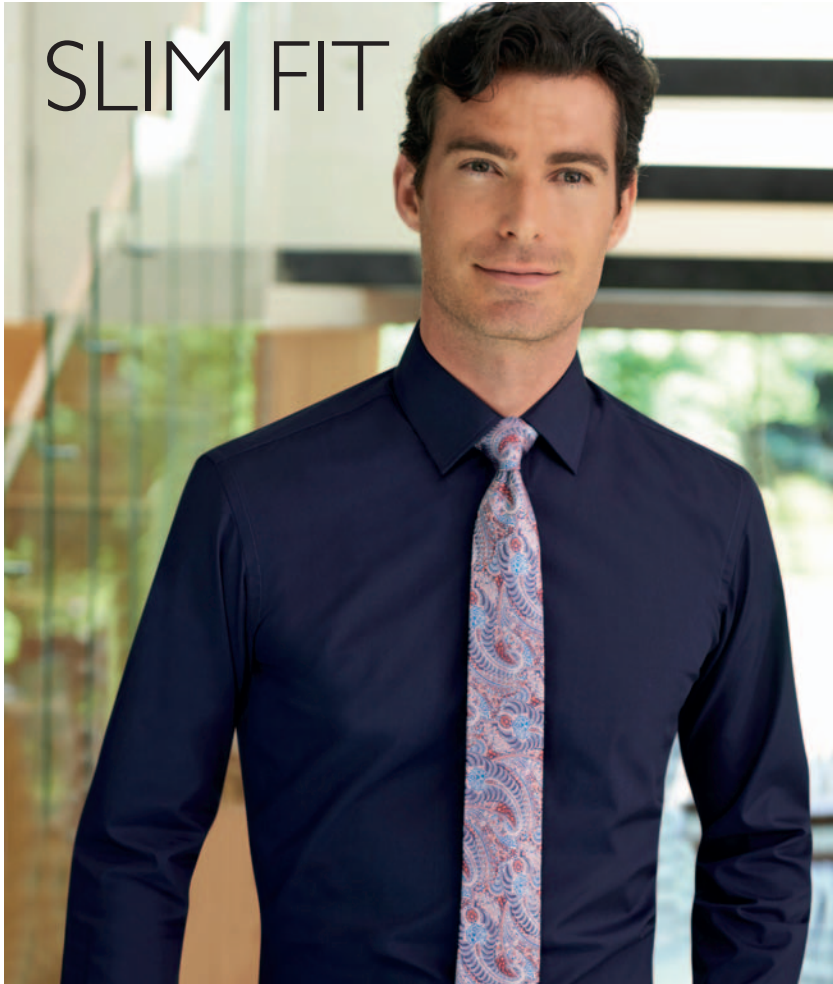
55% COTTON / 45% POLYESTER - EASY IRON - LONG SLEEVE

MEN'S ALBA Slim fit, Long sleeve

- Twin rear darts for defined silhouette
- Semi cutaway collar

# NEW FOR 2018!

GREY & NAVY COLOURWAYS



## SLIM FIT



ALBA Shirt  
Slim fit, Single cuff

Codes & Colours:

- 7640A White
- 7640D Black
- 7640E Blue
- 7640F Lilac
- 7640G Grey
- 7640H Navy

Sizes: 14" - 18"

A. White



E. Blue

F. Lilac

D. Black

G. Grey

H. Navy



ALBA Shirt  
Slim fit, Single cuff

# COTTON RICH



55% COTTON / 45% POLYESTER - EASY IRON

MEN'S **RAPINO** Classic fit, Long sleeve MEN'S **ROSELLO** Classic fit, Short sleeve

- Chest pocket (Rapino / Rosello)
- Single button cuff (Rapino)



**RAPINO Shirt**  
Classic fit, Single cuff

**Codes & Colours:**

- 7539A White
- 7539D Black
- 7539E Blue
- 7539F Lilac
- 7539G Grey
- 7539H Navy

**Sizes:** 14.5"- 20"



**RAPINO Shirt**  
Classic fit, Single cuff

**ROSELLO Shirt**  
Classic fit, Short sleeve

**Codes & Colours:**

- 7541A White
- 7541D Black
- 7541E Blue
- 7541F Lilac
- 7641G Grey
- 7641H Navy

**Sizes:** 14.5"- 20"



**ROSELLO Shirt**  
Classic fit, Short sleeve

**NEW  
FOR  
2018!**  
GREY & NAVY  
COLOURWAYS

# COTTON RICH



55% COTTON / 45% POLYESTER - EASY IRON

WOMEN'S PALENA Semi fitted, Long sleeve WOMEN'S PADULI Semi fitted, Short sleeve

- Single 2 button cuff (Palena)
- Short sleeve with adjustable cuff (Paduli)



**PALENA Blouse**  
Semi fitted, Single cuff

**Codes & Colours:**

- 2214A White
- 2214E Blue
- 2214F Lilac

**Sizes:** 4 - 30 regular



**PALENA Blouse**  
Semi fitted, Single cuff

**Codes & Colours:**

- 2214D Black

**Sizes:** 6 - 24 regular

**PADULI Blouse**  
Semi fitted, Short sleeve

**Codes & Colours:**

- 2216A White
- 2216E Blue
- 2216F Lilac

**Sizes:** 4 - 30 regular



**PADULI Blouse**  
Semi fitted, Short sleeve

**Codes & Colours:**

- 2216D Black

**Sizes:** 6 - 24 regular

# SEMI FITTED



- F. Lilac
- A. White
- E. Blue
- D. Black





# MONZA

MEN'S LONG SLEEVE SHIRT  
WOMEN'S LUGANO LONG SLEEVE BLOUSE





# COTTON RICH



60% COTTON / 40% POLYESTER - SLIM FIT - EASY IRON

MEN'S MONZA Slim fit, Long sleeve

- Single two button cuff
- Twin rear darts for refined silhouette



A. Lilac Houndstooth



B. Blue Houndstooth



D. Black Houndstooth

**MONZA Shirt**  
Slim fit, Long sleeve

**Codes & Colours:**

- 7755A Lilac Houndstooth
- 7755B Blue Houndstooth
- 7755D Black Houndstooth

**Sizes:** 14" - 18"



**MONZA Shirt**  
Slim fit, Single cuff

# COTTON RICH



60% COTTON / 40% POLYESTER - SLIM FIT - EASY IRON

WOMEN'S **LUGANO** Semi fitted, Long sleeve

WOMEN'S **NAPOLI** Semi fitted, Short sleeve

- Fly Front
- Button up collar



A. Lilac Houndstooth



B. Blue Houndstooth



D. Black Houndstooth

**LUGANO Blouse**  
Semi fitted, Long sleeve

**Codes & Colours:**

- 2281A Lilac Houndstooth
- 2281B Blue Houndstooth
- 2281D Black Houndstooth

**Sizes:** 6 - 24 regular



**LUGANO Blouse**  
Semi fitted, Long sleeve

**NAPOLI Blouse**  
Semi fitted, Short sleeve

**Codes & Colours:**

- 2282A Lilac Houndstooth
- 2282B Blue Houndstooth
- 2282D Black Houndstooth

**Sizes:** 6 - 24 regular



**NAPOLI Blouse**  
Semi fitted, Short sleeve



# LUGANO & NAPOLI

LONG & SHORT SLEEVE BLOUSES

# COTTON RICH



60% COTTON / 40% POLYESTER - EASY IRON

WOMEN'S **PERANO** Semi fitted, Long sleeve WOMEN'S **PESCARA** Semi fitted, Short sleeve

MEN'S **RUFINA** Classic fit, Long sleeve MEN'S **ROCCELLA** Classic fit, Short sleeve

- Chest pocket (Rufina, Roccella)
- Single 2 button cuff (Perano)
- Short sleeve with adjustable cuff (Pescara)



**PERANO Blouse**  
Semi fitted, Long sleeve

**Codes & Colours:**

- 2215A White/Grey Stripe
- 2215B Pink/Grey Stripe
- 2215C Blue/White Stripe

**Sizes:** 6 - 24 regular

**PESCARA Blouse**  
Semi fitted, Short sleeve

**Codes & Colours:**

- 2217A White/Grey Stripe
- 2217B Pink/Grey Stripe
- 2217C Blue/White Stripe

**Sizes:** 6 - 24 regular

**RUFINA Shirt**  
Classic fit, Long sleeve

**Codes & Colours:**

- 7540A White/Grey Stripe
- 7540C Blue/White Stripe

**Sizes:** 14.5" - 20"

**ROCCELLA Shirt**  
Classic fit, Short sleeve

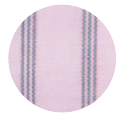
**Codes & Colours:**

- 7542A White/Grey Stripe
- 7542C Blue/White Stripe

**Sizes:** 14.5" - 20"



A. White/Grey Stripe



B. Pink/Grey Stripe



C. Blue/White Stripe



**PERANO Blouse**  
Semi fitted, Long sleeve



**PESCARA Blouse**  
Semi fitted, Short sleeve



**RUFINA Shirt**  
Classic fit, Long sleeve



**ROCCELLA Shirt**  
Classic fit, Short sleeve

# COTTON RICH

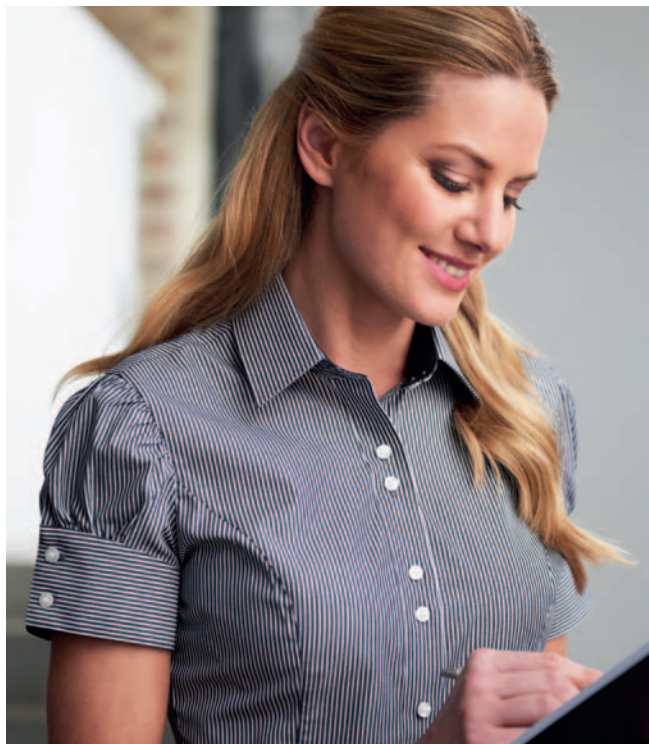


**60% COTTON / 40% POLYESTER - EASY IRON**

WOMEN'S **CAMPANIA** Semi fitted, Long sleeve WOMEN'S **LIGURIA** Semi fitted, Short sleeve

MEN'S **MANTOVA** Classic fit, Long sleeve

- Chest pocket (Mantova)
- Contrast inner collar and cuff (C only)
- Double button fastening (Campania)



**CAMPANIA Blouse**  
Semi fitted, Long sleeve

**Codes & Colours:**

- 2239A White Waffle Weave
- 2239C Black/White Stripe

**Sizes:** 6 - 24 regular

**LIGURIA Blouse**  
Semi fitted, Short sleeve

**Codes & Colours:**

- 2240A White Waffle Weave
- 2240C Black/White Stripe

**Sizes:** 6 - 24 regular

**MANTOVA Shirt**  
Classic fit, Long sleeve

**Codes & Colours:**

- 7594A White Waffle Weave
- 7594C Black/White Stripe

**Sizes:** 14.5" - 20"

**SAVONA Shirt**  
Classic fit, Short sleeve

**Codes & Colours:**

- 7595C Black/White Stripe

**Sizes:** 14.5" - 20"



A. White Waffle Weave



C. Black/White Stripe



**CAMPANIA Blouse**  
Semi fitted, Single cuff



**LIGURIA Blouse**  
Semi fitted, Short sleeve



**MANTOVA Shirt**  
Classic fit, Single cuff



**SAVONA Shirt**  
Classic fit, Short sleeve



# ONE COLLECTION



65% POLYESTER / 35% COTTON

MEN'S JUNO Long sleeve

MEN'S VESTA Short sleeve

- Premium quality 65% polyester / 35% cotton fabric, 115g
- Long sleeve (Juno) / Short sleeve (Vesta)
- Classic fit
- 2 Button cuff (Juno)
- Chest pocket
- Large size range 14.5" - 22"
- Machine washable at 40°

# BUSINESS ESSENTIALS

VALUE RANGE



**JUNO Shirt**  
Long sleeve

**Codes & Colours:**  
7742A White  
7742B Blue

**Sizes:**  
14.5" - 22"



**JUNO Shirt**  
Long sleeve

**VESTA Shirt**  
Short sleeve

**Codes & Colours:**  
7743A White  
7743B Blue

**Sizes:**  
14.5" - 22"



**VESTA Shirt**  
Short sleeve

# ONE COLLECTION



65% POLYESTER / 35% COTTON

WOMEN'S **SELENE** Long sleeve

WOMEN'S **EOS** Short sleeve

- Premium quality 65% polyester / 35% cotton fabric, 115g
- Long sleeve (Selene) / Short sleeve (Eos)
- Classic fit
- 2 Button cuff (Selene)
- Large size range 4R - 30R
- Machine washable at 40°

## BUSINESS ESSENTIALS

VALUE RANGE



**SELENE Blouse**  
Long sleeve

**Codes & Colours:**  
2270A White  
2270B Blue

**Sizes:**  
4R - 30R



**SELENE Blouse**  
Long sleeve

**EOS Blouse**  
Short sleeve

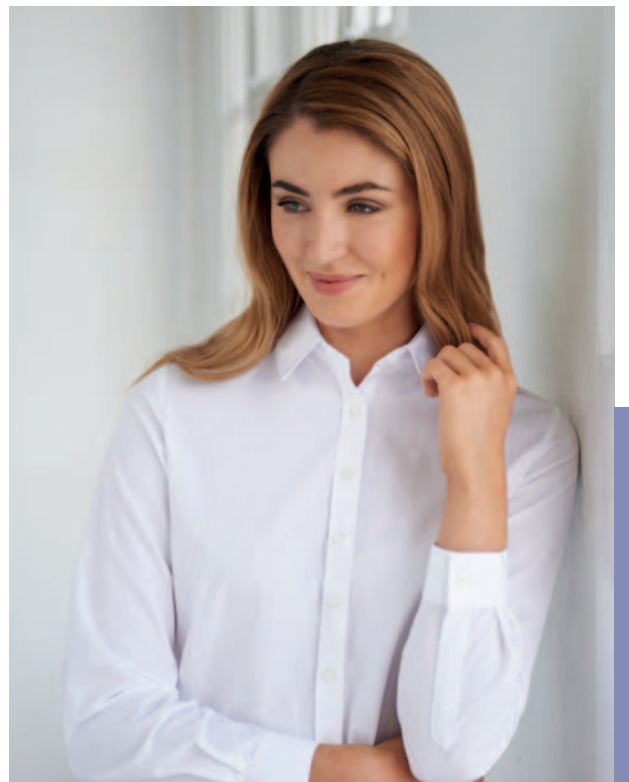
**Codes & Colours:**  
2271A White  
2271B Blue

**Sizes:**  
4R - 30R



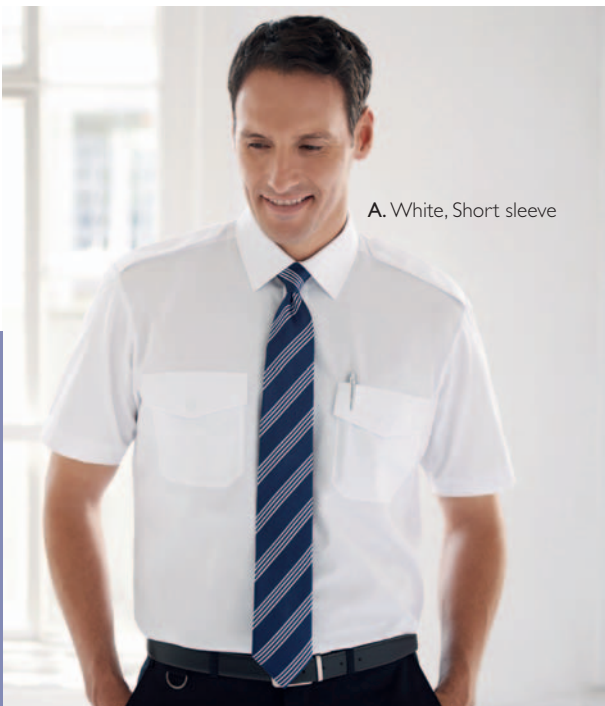
**EOS Blouse**  
Short sleeve



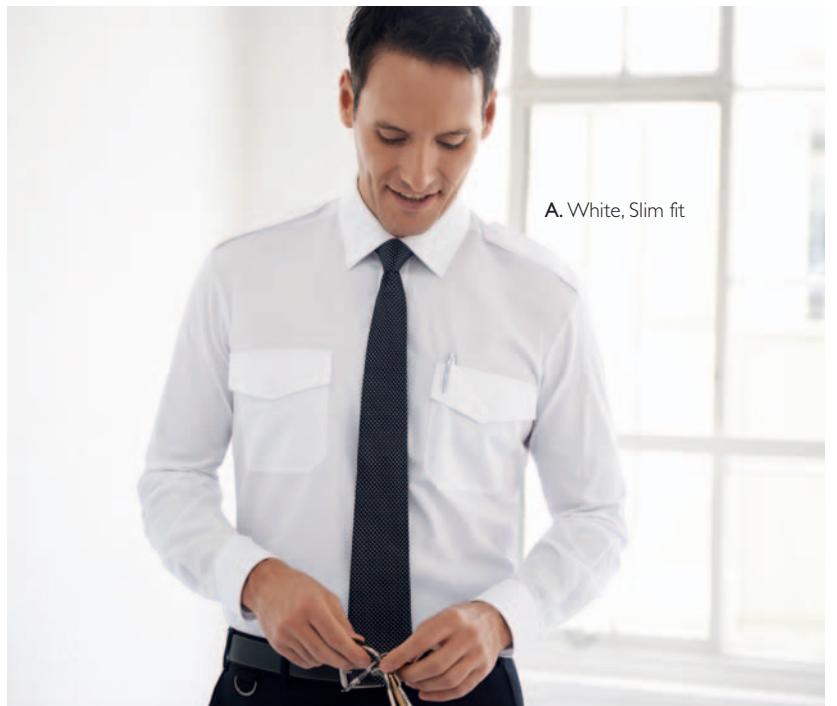




A. White, Classic fit



A. White, Short sleeve



A. White, Slim fit

# ONE COLLECTION



65% POLYESTER / 35% COTTON - PILOT SHIRTS - EASY CARE

**HERMES** Classic fit, Long sleeve pilot shirt

**OLYMPUS** Classic fit, Short sleeve pilot shirt

**ARES** Slim fit, Long sleeve pilot shirt

- Premium quality 65% polyester / 35% cotton fabric, 115g
- Long sleeve (Hermes & Ares) / Short sleeve (Olympus)
- Classic fit (Hermes & Olympus) Slim fit (Ares)
- 2 Button cuff (Hermes & Ares)
- Twin chest pockets with flap
- Pen holder
- Epaulettes
- Classic fit available up to collar size 22"
- Machine washable at 40°

## BUSINESS ESSENTIALS

VALUE RANGE



**HERMES Shirt**  
Classic Fit Pilot Shirt

**Codes & Colours:**  
7745A White

**Sizes:**  
14.5"- 22"



**HERMES Shirt**  
Classic fit, Button cuff

**OLYMPUS Shirt**  
Classic Fit Pilot Shirt

**Codes & Colours:**  
7746A White

**Sizes:**  
14.5"- 22"



**OLYMPUS Shirt**  
Classic fit, Short sleeve

**ARES Shirt**  
Slim Fit Pilot Shirt

**Codes & Colours:**  
7756A White

**Sizes:**  
14"- 18"



**ARES Shirt**  
Slim fit, Button cuff

**CLASSIC FIT**  
AVAILABLE UP TO SIZE 22"

**SLIM FIT**  
AVAILABLE UP TO SIZE 18"