



ACKERMANN'S APPAREL

Fashion for Work



CORPORATE CLOTHING 2018

BUSINESS CASUAL - SOPHISTICATED - PERFORMANCE - ECLIPSE - CONCEPT - ONE - SHIRT & BLOUSE - MIX & MATCH

PERFORMANCE

COLLECTION

18 piece collection in a choice of up to 4 colours

WOMEN'S

SLIM FIT

ROSEWOOD Jacket	45
HEMPEL Trousers - NEW for 2018!	49

TAILORED FIT

RITZ Jacket	46
MAYFAIR Jacket	46
ASTORIA Trousers	48
DORCHESTER Trousers	48
WALDORF Waistcoat	46

CLASSIC FIT

CONNAUGHT Jacket	47
GROSVENOR Trousers	46 - 48

DRESS & SKIRT

CORINTHIA Dress	50
WYNDHAM Skirt	45 - 50 - 51

WOMEN'S COLLECTION SUMMARY

Women's Jackets & Trousers	58 - 59
Women's Dress, Skirts & Waistcoat	60

MEN'S

SLIM FIT

HOLBECK Jacket	51 - 53
HOLBECK Trousers	51 - 54

TAILORED FIT

ALDWYCH Jacket	52
ALDWYCH Trousers	54
CAPITAL Waistcoat	55

CLASSIC FIT

LANGHAM Jacket	53
LANGHAM Trousers	54

MEN'S COLLECTION SUMMARY

Men's Jackets, Waistcoat & Trousers	56 - 57
-------------------------------------	---------

COLOUR CHOICE AND AFTERCARE

Performance Collection Fabric Colour Choice	61
---	----

- 65% Polyester, 35% Wool with Shape Memory Technology
- 325gm crease-resistant fabric
- Machine washable tailoring
- Martindale Test > 80,000 rubs
- Ideal for hotels, hospitality, councils, FM & security

NEW FOR 2018
HEMPEL Slim Fit Trousers
- page 49



SLIM FIT SUITING



ROSEWOOD

Slim Fit Jacket

Charcoal

1 button,
peaked lapel,
plain back.

Roma Blouse - Burgundy/Navy Print

WYNDHAM

Skirt

Charcoal

Centre vent,
shaped back panels,
full stretch lining.

RITZ

Tailored Fit Jacket

Mid Grey
3 button,
peaked lapels,
centre vent.
Trevi Blouse - Blue

GROSVENOR

Straight Leg Trouser

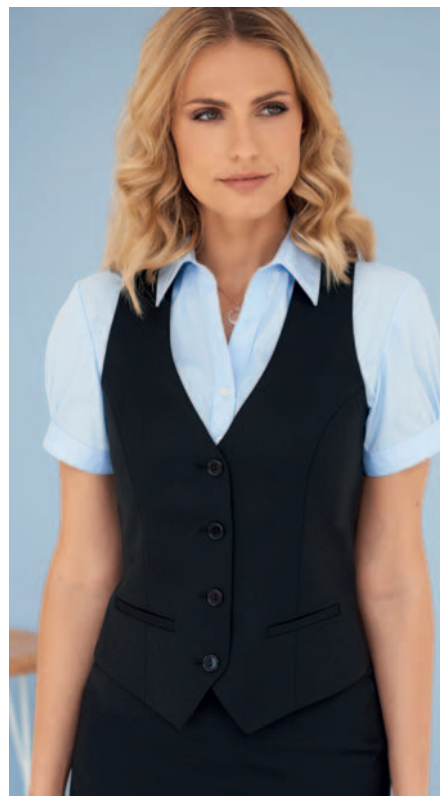
Mid Grey
Single button.



MAYFAIR

Tailored Fit Jacket

Black
3 button,
rounded lapel and pockets,
plain back.
Trevi Blouse - Blue



WALDORF

Ladies' Waistcoat

Black
4 button front,
Lining backed
with adjuster,
2 welt pockets.
Paduli Blouse - Blue

TAILORED FIT JACKETS

CLASSIC FIT SUITING

CONNAUGHT

Classic Fit Jacket

Navy

2 button,
centre vent.

Lugano Blouse - Blue Houndstooth





DORCHESTER
Parallel Leg Trousers
Mid Grey
Front double
button fastening.
Riola Blouse - White



ASTORIA
Tailored Leg Trousers
Mid Grey
2 side pockets.
Firenze Blouse - White



GROSVENOR
Straight Leg Trousers
Navy
Single button.
Felina Blouse - White

NEW
FOR 2018!

HEMPEL

Slim Leg Trousers

Black

Front double
button fastening.

Verona Blouse - Burgundy

SLIM FIT TROUSER

CORINTHIA

Dress

Black

V-neck, short sleeve.



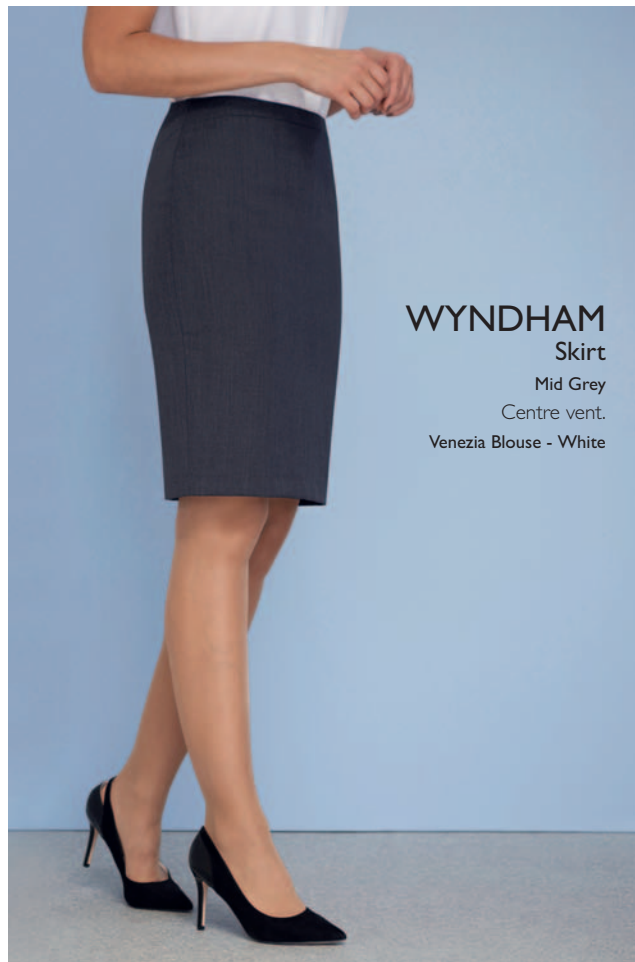
WYNDHAM

Skirt

Mid Grey

Centre vent.

Venezia Blouse - White



HOLBECK

Slim Fit Jacket
Charcoal
2 button,
side vents, slim lapels.

HOLBECK

Slim Fit Trousers
Charcoal
Flat front.
Pisa Shirt - White

ROSEWOOD

Slim Fit Jacket
Charcoal
1 button,
peaked lapel,
plain back.
Roma Blouse -
Burgundy/Navy Print

WYNDHAM

Skirt
Charcoal
Centre vent,
shaped back panels,
full stretch lining.

SLIM FIT SUITING

ALDWYCH Tailored Fit Jacket

Navy

2 button,
side vents.

Monza Shirt - Blue Houndstooth



TAILORED FIT SUITING

HOLBECK

Slim Fit Jacket

Mid Grey

2 button,
side vents, slim lapels.

Pisa Shirt - Sky Blue

SLIM FIT SUITING



CLASSIC FIT SUITING

LANGHAM

Classic Fit Jacket

Black

3 button,
centre vent.

Prato Shirt - Blue Herringbone



HOLBECK

Slim Fit Trousers

Mid Grey
Flat front.
Pisa Shirt - White



ALDWYCH
Tailored Fit Trousers
Mid Grey
Flat front.
Rapino Shirt - Lilac



LANGHAM

Classic Fit Trousers

Black
Single pleat,
2 side pockets,
1 rear pocket.
Andora Shirt - Pink Herringbone

CAPITAL

Men's Waistcoat

Mid Grey
5 button front,
Lining backed
with adjuster,
2 welt pockets.
Rapino Shirt - Lilac

ALDWYCH

Tailored Fit Trousers

Mid Grey
Flat front.



MEN'S PERFORMANCE SUMMARY

HOLBECK Slim Fit Jacket

Navy

2 button, side vents, slim lapels with saddle stitching.

Sizes:

34" - 44" short
34" - 46" regular
34" - 44" long

Codes & Colours:

3500A Navy
3500C Charcoal
3500D Black
3500G Mid Grey



Centre back length at size 40R = 75cm

ALDWYCH Tailored Fit Jacket

Mid Grey

2 button, side vents.

Sizes:

36" - 48" short
36" - 56" regular
38" - 48" long

Codes & Colours:

3125A Navy
3125C Charcoal
3125D Black
3125G Mid Grey



Centre back length at size 40R = 77cm

HOLBECK Slim Fit Trousers

Navy

Flat front, 2 side pockets, 1 rear pocket.

Sizes:

28" - 40" waist in leg lengths
S-29.5", R-31.5", L-33"
& 36" unfinished

Codes & Colours:

8733A Navy
8733C Charcoal
8733D Black
8733G Mid Grey

Half hem width at waist size 34" = 19cm



ALDWYCH Tailored Fit Trousers

Charcoal

Flat front, 2 side pockets, 1 rear pocket.

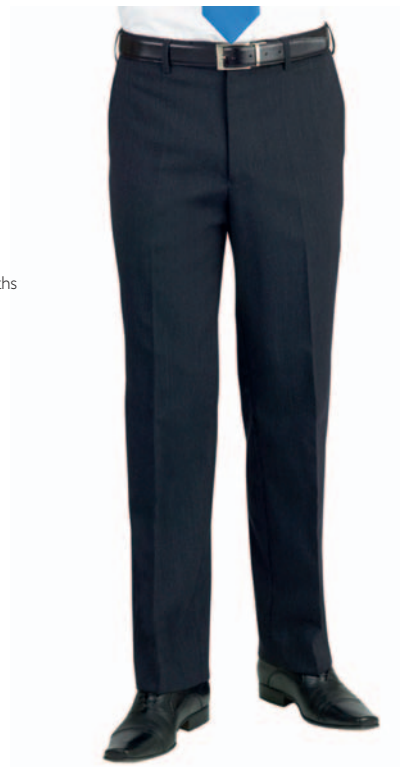
Sizes:

28" - 44" waist in leg lengths
S-29.5", R-31.5", L-33"
& 36" unfinished

Codes & Colours:

8557A Navy
8557C Charcoal
8557D Black
8557G Mid Grey

Half hem width at waist size 34" = 21cm



- 65% Polyester, 35% Wool with Shape Memory Technology
- 325gm crease-resistant fabric
- Machine washable tailoring
- Martindale Test > 80,000 rubs

MEN'S PERFORMANCE SUMMARY

BROOK TAVERNER
corporate tailoring

LANGHAM

Classic Fit Jacket

Black

3 button,
centre vent.

Sizes:

36" - 48" short
36" - 60" regular
38" - 48" long

Codes & Colours:

5984A Navy
5984C Charcoal
5984D Black



Centre back length at
size 40R = 78cm

CAPITAL

Waistcoat

Black

5 button front,
Lining backed
with adjuster;
2 welt pockets.

Sizes:

36" - 54" regular

Codes & Colours:

I300A Navy
I300C Charcoal
I300D Black
I300G Mid Grey



LANGHAM

Classic Fit Trousers

Navy

Single pleat,
2 side pockets,
1 rear pocket.

Sizes:

28" - 56" waist in leg lengths
S-29.5", R-31.5", L-33"
& 36" unfinished

Codes & Colours:

8525A Navy
8525C Charcoal
8525D Black

Half hem width at
waist size 34" = 22cm



WOMEN'S PERFORMANCE SUMMARY

ROSEWOOD Slim Fit Jacket

Navy

1 button, peaked lapel, 2 flap and 2 jetted pockets, plain back.

Sizes:

6 - 16 petite
4 - 18 regular
6 - 16 long

Codes & Colours:

2263A Navy
2263C Charcoal
2263D Black
2263G Mid Grey



Centre back length at size 12R = 55.5cm

RITZ Tailored Fit Jacket

Black

3 button, peaked lapels, centre vent.

Sizes:

6 - 16 petite
6 - 24 regular
8 - 18 long

Codes & Colours:

2227A Navy
2227C Charcoal
2227D Black
2227G Mid Grey



Centre back length at size 12R = 58cm

MAYFAIR Tailored Fit Jacket

Mid Grey

3 button, rounded lapel and pockets, plain back.

Sizes:

6 - 16 petite
6 - 24 regular
8 - 18 long

Codes & Colours:

2228A Navy
2228C Charcoal
2228D Black
2228G Mid Grey



Centre back length at size 12R = 60.5cm

CONNAUGHT Classic Fit Jacket

Charcoal

2 button, notch lapel, 1 inside pocket, centre vent.

Sizes:

6 - 18 petite
6 - 30* regular
8 - 24 long

Codes & Colours:

2226A Navy
2226C Charcoal
2226D Black
2226G Mid Grey

*Mid Grey available to 24R only



Centre back length at size 12R = 65.5cm

- 65% Polyester, 35% Wool with Shape Memory Technology
- 325gm crease-resistant fabric
- Machine washable tailoring
- Martindale Test > 80,000 rubs

**NEW
 FOR 2018!**

HEMPEL
 Slim Leg Trousers
 Navy

Side pockets
 mock hip pockets.

Sizes:
 4 - 24 waist in leg lengths
 S-27", R-29", L-31", XL-33"
 & 36" unfinished

Codes & Colours:
 2306A Navy
 2306C Charcoal
 2306D Black
 2306G Mid Grey



16cm
 Half hem width at
 size 12 = 16cm

ASTORIA
 Tailored Leg Trousers
 Mid Grey

Front hook fastening,
 2 side pockets,
 mock rear pockets,
 half lined.

Sizes:
 4 - 24 waist in leg lengths
 S-27", R-29", L-31", XL-33"
 & 36" unfinished

Codes & Colours:
 2262A Navy
 2262C Charcoal
 2262D Black
 2262G Mid Grey



21cm
 Half hem width at
 size 12 = 21cm

GROSVENOR
 Straight Leg Trousers
 Navy

Single button front
 fastening, key
 card pocket,
 half lined, belt loops.

Sizes:
 6 - 30 waist in leg lengths
 S-27", R-29", L-31", XL-33"
 & 36" unfinished

Codes & Colours:
 2231A Navy
 2231C Charcoal
 2231D Black
 2231G Mid Grey
 Mid Grey available
 to 24 only



22cm
 Half hem width at
 size 12 = 22cm

DORCHESTER
 Parallel Leg Trousers
 Charcoal

Low waist, front double
 button fastening,
 key card pocket, mock
 rear pockets, half lined,
 belt loops.

Sizes:
 6 - 24 waist in leg lengths
 S-27", R-29", L-31", XL-33"
 & 36" unfinished

Codes & Colours:
 2232A Navy
 2232C Charcoal
 2232D Black
 2232G Mid Grey



23cm
 Half hem width at
 size 12 = 23cm

WOMEN'S PERFORMANCE SUMMARY

CORINTHIA

Dress

Mid Grey

V-neck, short sleeve, breast darts, centre vent, full stretch lining.

Sizes:

6 - 24 regular
8 - 20 long

Codes & Colours:

2246A Navy
2246C Charcoal
2246D Black
2246G Mid Grey



Centre back length at size 12R = 97cm

WALDORF

Waistcoat

Black

4 button front, lining backed with adjuster; 2 welt pockets.

Sizes:

6 - 24 regular

Codes & Colours:

2260A Navy
2260C Charcoal
2260D Black
2260G Mid Grey



WYNDHAM

Skirt

Navy

Centre vent, shaped back panels, full stretch lining.

Sizes:

4 - 24 regular - 22"
8 - 30 long - 25"
8 - 24 x-long - 27"

Codes & Colours:

2229A Navy
2229C Charcoal
2229D Black
2229G Mid Grey

Mid Grey available to 24L only



FASHION

Belts

Twin Packs

Women's fashion belts, gold buckle.

Sizes:

XS 6
S 8 - 10
M 12 - 14
L 16 - 18
XL 20 - 22 - 24

Codes & Colours:

2248A Navy/Nude
2248D Black/Nude



2248A Navy/Nude



2248D Black/Nude

- 65% Polyester, 35% Wool with Shape Memory Technology
- 325gm crease-resistant fabric
- Machine washable tailoring
- Martindale Test > 80,000 rubs

Our **PERFORMANCE** collection is available in up to 4 fabric colour choices.



A. Navy

C. Charcoal

D. Black

G. Mid Grey



WASHCARE INSTRUCTIONS

WASHING

For the best results ensure that the suit is washed separately & machine wash as wool. Garments will need to be removed immediately from the machine when the cycle has ended.

DRYING

Place the jacket on the hanger; gently shake and re-shape by straightening seams. Fold the trousers to the front creases and hang over the bar on garment hanger. Allow both garments to dry naturally & keep away from direct heat. Do not tumble dry.

FINISHING

If required, press the garments using a cool iron over a damp cloth. Alternatively, garments from the Performance Collection can be dry cleaned.



MACHINE WASHABLE 40°
SUITABLE FOR DRY CLEANING (P)



- 65% Polyester, 35% Wool with Shape Memory Technology
- 325gm crease-resistant fabric
- Machine washable tailoring
- Martindale Test > 80,000 rubs