

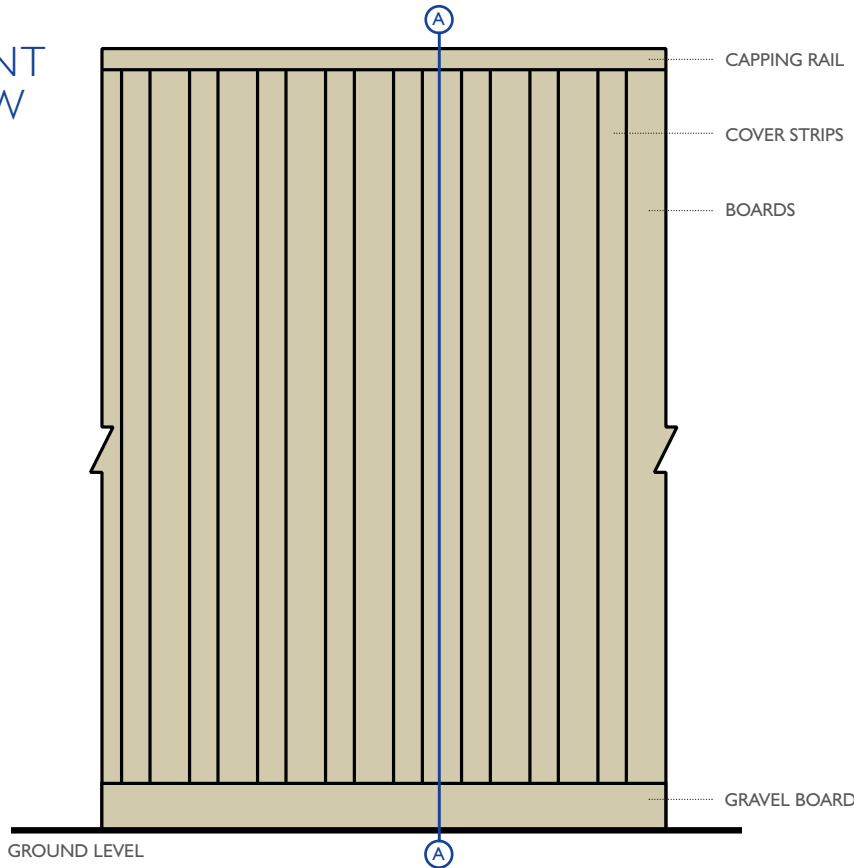
ABSORBENT SOUND SCREEN FITTED INTO STEEL POSTS

AUGUST 2012

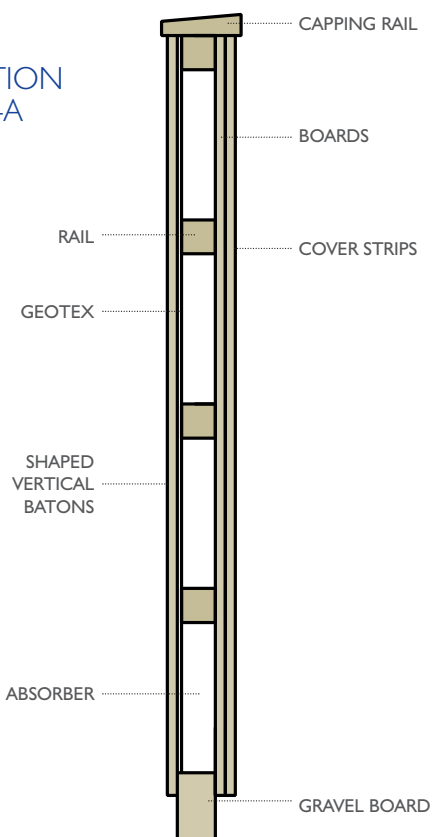
PLEASE NOTE:

1. DESIGN AND HEIGHT TO SUIT SPECIFIC REQUIREMENTS.
2. CONFORMS AND TESTED TO BS EN 1793. ALSO TESTED AND COMPLIES TO BS EN 1794-1 AND BS EN 1794-2.
3. COMPLIES WITH HIGHWAYS SECTOR SCHEME 2C FOR THE PREFABRICATION OF ENVIRONMENTAL BARRIERS.
4. STRUCTURAL CALCULATIONS MAY BE REQUIRED BY QUALIFIED PERSONS, NO RESPONSIBILITY CAN BE ACCEPTED BY USING THIS DESIGN WITHOUT PROFESSIONAL ADVICE.
5. DESIGN IN ACCORDANCE WITH SPECIFICATION FOR HIGHWAY WORKS CLAUSE 2504. TREATMENT TO SECTOR SCHEME 4.
6. HEIGHT OF SOUND SCREEN VARIABLE TO SUIT SPECIFIC LOCATIONS. POST CENTRES AT 3.0M UNLESS OTHERWISE SPECIFIED.
7. ABSORBENT SOUND SCREENS CAN ALSO BE FITTED TO TIMBER POSTS AS AN ALTERNATIVE.

FRONT VIEW



SECTION A-A



PLAN VIEW
(Capping omitted)

