

A close-up photograph of a brown, ribbed wicker chair frame. The frame is composed of several curved, interlocking pieces of wicker. A white, curved cushion is visible in the bottom left corner. The background is a plain, light gray.

LO.

LOUIS
OSIER
CO.

OUTDOOR FURNISHINGS



LOUIS HO, PRINCIPAL



Founded out of the need to make what we love, Louis Ho and team bring a 25-year legacy of manufacturing and design to the outdoor market with the Louis Osier, Co.

Louis lōōwis/ "Louis" is our founder; Louis Ho. A seasoned veteran to the outdoor industry. His first company, Wicker Hills Enterprises, has evolved into a premier source for manufacturing outdoor goods; specializing in Resin, Cast Concrete, Wood, Metal and All Weather Rope.

Osier ōZHər/ is a nod to small Eurasian willows, or the long flexible shoots used in basketwork. The foundation of Louis Osier, Co. is a hands-on knowledge of weaving.

We look forward to your exploration of our line by visiting us at an upcoming market, LOUISOSIER.COM, or @LOUISOSIERCO

AVIVA

HANDWOVEN RESIN • POWDER-COATED ALUMINUM • SUNBRELLA®

A versatile show stopper, hand wrapped resin in just the right places.



HIGH LOUNGE CHAIR



LOUNGE CHAIR



POUF



DAYBED

HANDWOVEN RESIN

Pigments are custom blended, extruded and finished in a method that emulates natural osier visually and texturally.



COLLINS

CAST CONCRETE

A modern anchor for every setting. Hand finished, durable and available in 3 finishes. See resource guide.



SHORT SIDE TABLE



TALL SIDE TABLE



35" COFFEE TABLE



44" COFFEE TABLE



56" COFFEE TABLE



CAST CONCRETE

A traditional concrete base is pigmented, and mixed with fibrous compounds to reduce weight and curing time.



OSIER

HANDWOVEN RESIN • WEATHERED TEAK • SUNBRELLA®

Comfort takes shape with foam wrapped frames in our signature weave. Two finishes, see resource guide.



DINING ARMCHAIR



LOUNGE CHAIR



SWIVEL LOUNGE CHAIR



OTTOMAN



COFFEE OTTOMAN



POUF



CHAISE



78"/"90"/102" SOFAS



LT/RT SOFA CHAISE



WEATHERED TEAK

Wire brushed and hand finished with a warm pigment. Finish will "silver" over time.

OLSEN

CAST CONCRETE • WEATHERED TEAK

Floating cast concrete top on a beveled teak base. Two finishes, see resource guide.



24" END TABLE



14" SIDE TABLE



55" COFFEE TABLE



68" COFFEE TABLE



BENCH



96" DINING TABLE

AVERY

HANDWOVEN RESIN • SUNBRELLA®

Lattice weave framed with soft curves. A great traditional addition to any space; available in 3 finishes, visit [LouisOsier.com](https://louisosier.com).



DINING ARMCHAIR



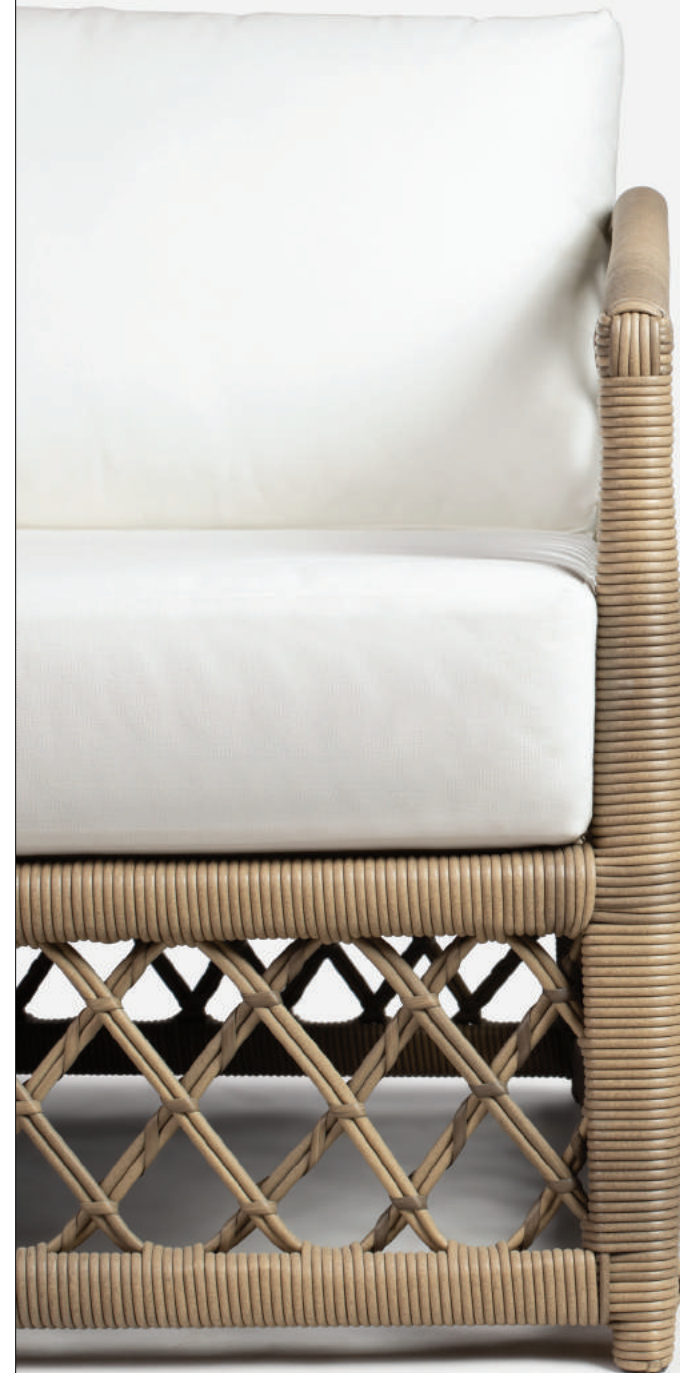
SIDE TABLE



LOUNGE CHAIR



SETTEE



MARIN

ALL WEATHER ROPE • NATURAL TEAK • SUNBRELLA®

Less is never more. Layering a beveled edge frame and a woven grid-like pattern makes a statement.



DINING ARMCHAIR



LOUNGE CHAIR



OTTOMAN



COFFEE OTTOMAN



BENCH



78"/90" SOFA



NATURAL TEAK

Sanded and oiled to allow the natural wood grain to shine. Finish will "silver" over time.

XANDER

CAST CONCRETE • WEATHERED TEAK

Define your space with a 3" concrete top and base adorned with classic metal accents. Two finishes, see resource guide.



LANTERNS

POWDER COATED ALUMINUM • WEATHERED TEAK

Simple shapes that can match many styles and finishes.
3.5" diameter glass hurricanes included. Recommend using
battery operated candles for ease and maintenance.



HAMLIN

DANE

BEALE

OREN

JOYCE

ALL WEATHER ROPE • SUNBRELLA®

Small scale with a large impact, thanks to the continuous knotted detail.



DINING ARMCHAIR



LOUNGE CHAIR



OTTOMAN



BENCH



74.5" SOFA

RAWLINS

CAST CONCRETE • WEATHERED TEAK

Solid materials create a weightless silhouette on this 48" table. Perfect for indoor and outdoor spaces.



EDWIN

POWDER-COATED ALUMINUM • SUNBRELLA®

Make a sofa for two or a sectional for twenty. Simple modular design allows you to customize for any space.



CORNER



ARMLESS



OTTOMAN



COFFEE OTTOMAN

TERRA

CAST CONCRETE

Cast from a natural root that was hand selected for excellent curves and shape.



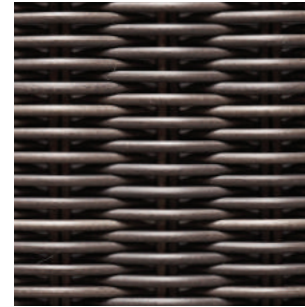
KIP

ALL WEATHER ROPE • POWDER COATED ALUMINUM • SUNBRELLA®

A geometric pattern, bordered by an ascending frame, all handwoven to perfection.



MATERIALS



HANDWOVEN RESIN

HDPE and color pigments are custom blended, extruded and finished in a method that emulates natural osier visually and texturally.



SOLID TEAK

Weathered teak is wire brushed and hand finished with a warm pigment. Natural teak is sanded and oiled to allow the natural wood grain to shine. Both wood finishes will "silver" over time.



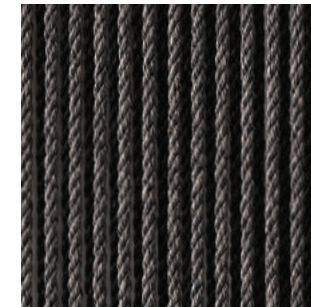
ALUMINUM

Precision welded, hand finished and powder-coated to create a solid foundation.



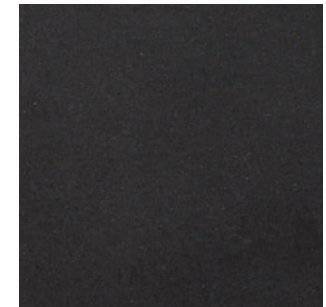
STAINLESS STEEL

Naturally corrosion proof steel is precision welded and hand finished.



ALL WEATHER ROPE

Polyester and PVC compounds act as the base for our proprietary "All Weather Rope". The colors are custom blended, extruded, and twisted together for a durable high-performance product.



CAST CONCRETE

A traditional concrete base is pigmented and mixed with fibrous compounds to reduce weight and curing time. Hand molded, finished and sealed. Each piece is slightly different.



LOUISOSIER.COM

@LOUISOSIERCO

HELLO@LOUISOSIER.COM

US AND AMERICAS:

+1.415.324.7064

ASIA AND EUROPE:

+852.2370.2728

SUNBRELLA®

100% solution dyed acrylic
Sunbrella® Canvas is used
on all cushion covers.

SWATCHES

Available on all finishes, sent free of charge. Email us at SWATCHES@LOUISOSIER.COM or
Call (US) +1.415.324.7064

CUSHIONS

Most of our seat cushions are made with an Open Cell Foam wrapped in Dacron. They allow
water to flow through and drain. Dining cushions are reversible.

CARE

Cover when not in use, wipe down and power wash (1200-1400psi) when necessary. Do not
let pooled water sit on or under any pieces.

WARRANTY

Louis Osier, Co. stands by a limited 3-year warranty for all items purchased. We stand by
the manufacturing quality of all items. Our goal is for all our clients to have a long and
happy relationship with their Louis Osier, Co. products. Contact us if you are unhappy and
feel that it is within our responsibility to make it right.

COPYRIGHT AND PATENTS PENDING; LOUIS OSIER COMPANY 2019