

# AIGLE

HANDWOVEN RESIN • CAST CONCRETE



## ROUND COFFEE TABLE

DIA: 40" H: 14.75"

Overall Height: 14.75"

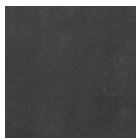
Overall Diameter: 40"

## FINISHES

SWATCHES@LOUISOSIER.COM



HANDWOVEN  
RESIN: ASH



CONCRETE  
DARK

LOUNGE CHAIRS | SOFAS | DINING ARMCHAIRS | **ROUND COFFEE TABLES** | COFFEE TABLES | SIDE TABLES | DINING TABLES