



R O O M T O R O A M

SPOT  ON™

VIRTUAL SMART FENCE

---

QUICK START GUIDE

# WELCOME!

Dear SpotOn™ Owner,

Congratulations and welcome to the SpotOn™ family! You've made a wise decision to invest in the only virtual fence system that keeps your dog safe and happy both at home and when you're on the go.

## **Only SpotOn™:**

- Uses three different satellite systems and cellular technology to keep your dog safe anywhere in the world.
- Gives you 100% flexibility to create custom Virtual Smart Fences wherever and whenever you want.
- Provides instant smartphone notification and GPS tracking if your dog ever escapes a Virtual Smart Fence.
- This brief Quick Start guide has been provided to ensure your initial SpotOn™ experience is trouble-free. We encourage you to use this guide together with the training materials at [SpotOnCollar.com](http://SpotOnCollar.com) to give you a comprehensive understanding of how your new SpotOn™ system works.

If you have any problems or questions, please visit our website at <http://SpotOnCollar.com/support> or call us directly at 603-488-5682 and we'll get you back on track quickly.

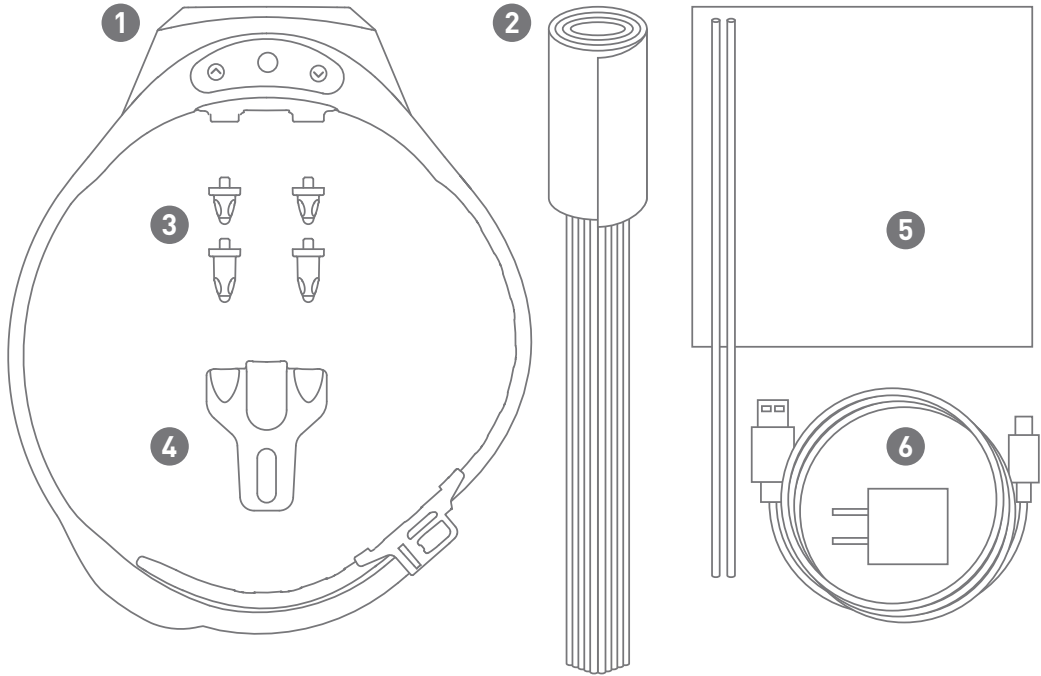
Here's wishing you and your dog many happy adventures.

Sincerely,  
Scott Sterling, President, OnPoint Systems, LLC

## HELPFUL HINTS AND CAUTIONS

- Do not attach a leash to the Smart Collar or use it to physically restrain your dog. Doing so can cause the collar's contact points to irritate your dog's neck and create discomfort. If a leash is required, attach it to a conventional collar fitted to your dog's neck below the SpotOn™ collar.
- Register your Smart Collar with your dog's name and valid owner contact details. Your Smart Collar doubles as an identification tag so be sure to keep it updated with accurate information.
- Pets should be properly trained before being left unattended inside a Virtual Smart Fence. Failure to do so is unfair to your dog and may cause them to escape the Smart Fence.
- Do not create a Virtual Smart Fence within 15 feet of a hazardous area, such as a street.
- The "Track My Pet" and "Compass" features may impact battery performance of your Smart Collar.
- Always remove the Smart Collar from your dog when not in use.
- Always remove the Smart Collar from your dog as soon as he/she enters the house.
- Frequently inspect your dog's neck. If you notice irritation from the Smart Collar, temporarily discontinue use until the irritation has subsided.

# INSIDE THE BOX



1. SpotOn™ Collar

2. 50 Training Flags

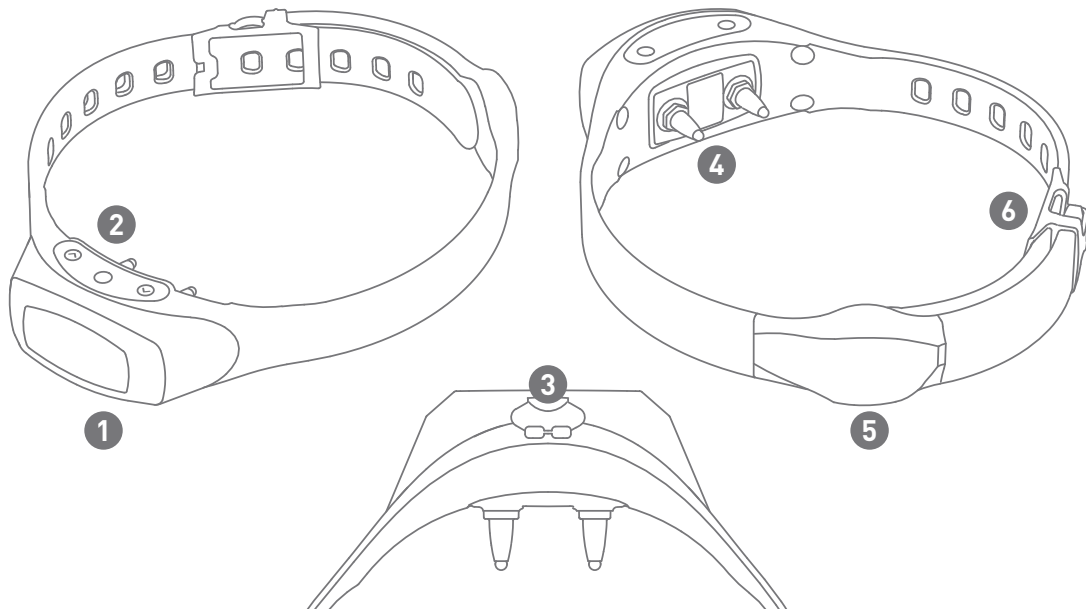
3. 2 Sets of Static Contact Points

4. Contact Point Tester / Insertion Tool

5. Training Target and Stakes

6. Wall Charger and USB Cable

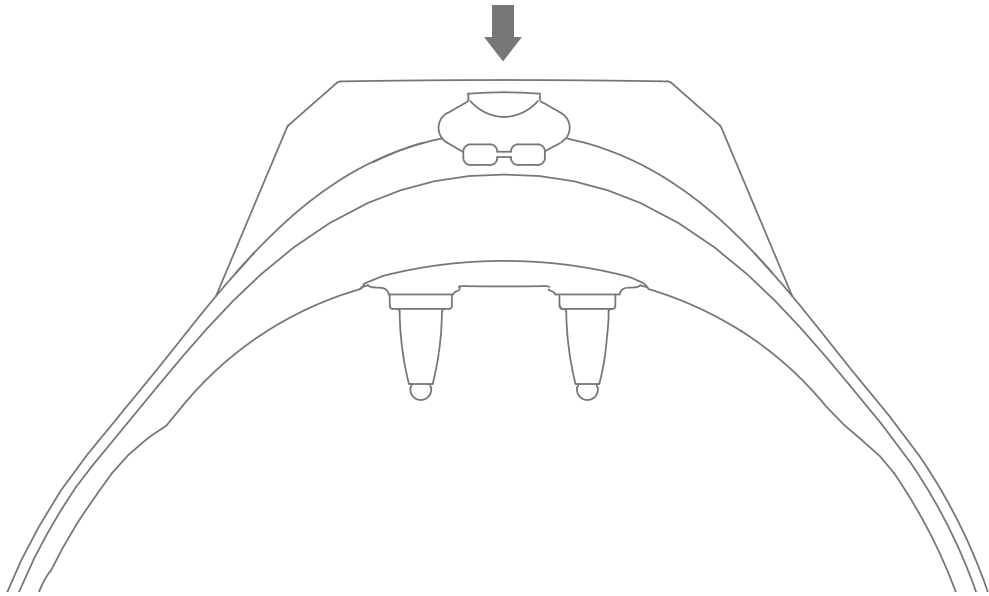
# A CLOSER LOOK AT YOUR SpotOn™ SMART COLLAR



- 1. Multi-Color OLED Display (provides information about your collar)
- 2. ON/OFF Button & Menu Selector
- 3. Battery Charging Port
- 4. Contact Points
- 5. GPS Antenna
- 6. Collar Clasp

# QUICK START GUIDE

## STEP 1: CHARGE YOUR SMART COLLAR'S BATTERY



Before setting up your SpotOn™ system, charge the Smart Collar's battery to 100%. This takes about an hour. The charging port is located on the underside of the collar, as shown above. Simply plug one end of the USB cable into the collar's charging port, and the other end into a computer USB jack or the wall charger provided.

## STEP 2: CREATE A SpotOn™ ACCOUNT

The image displays two screenshots of the SpotOn mobile app interface. The left screenshot shows the login screen with the SpotOn logo and the text 'VIRTUAL SMART FENCE'. Below the logo are input fields for 'Email' and 'Password', a 'Remember me' checkbox, and a 'Forgot password?' link. A 'LOGIN' button is centered below these fields. At the bottom, there is a 'Login with Facebook' option and a link that says 'Don't have an account? Create one!'. An arrow points from this link to the right screenshot. The right screenshot shows the registration form, also with the SpotOn logo and 'VIRTUAL SMART FENCE' text. It features input fields for 'First Name', 'Last Name', 'Email Address', 'Password', and 'Confirm Password'. A 'CREATE ACCOUNT' button is positioned below the 'Confirm Password' field. At the bottom, there is a 'Login with Facebook' option and a 'SIGN IN' button.

SpotOn™ smartphone apps are available for both iOS and Android devices. The app allows you to register your collar, receive notifications, view maps, and access training features. Follow these steps to get started:

1. Download and install the mobile app for your smartphone.

You can find the app by searching for SpotOn™ on:



2. Open the app and tap the “Create one!” link near the bottom of the screen.
3. Enter the details requested and tap “Create Account.”
4. Visit your email inbox and activate your account. If you do not receive an email, be sure to check your email’s spam/junk folder

### **STEP 3: REGISTER YOUR SMART COLLAR**

The first time you log into the SpotOn™ app, you'll be prompted to register your collar. Follow these steps:

1. In the prompt fields, enter your dog's name, gender, and birth date.
2. Enter your contact phone number, the 8 digit Collar ID located on the back of your Smart Collar, and select a color to represent your dog's icon on the app's map screens.
3. On this screen, you can add a photograph of your dog.
4. When you're done, click the check mark in the upper right corner of the device screen.

Your SpotOn™ Smart Collar is now registered!

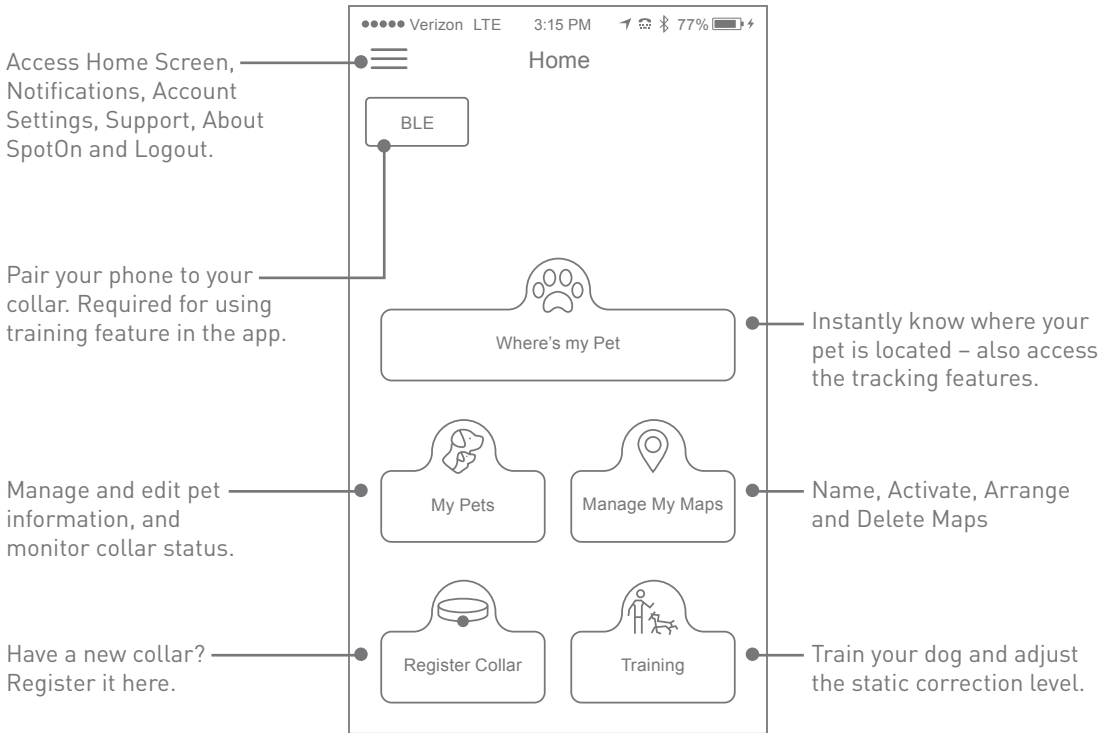
#### **Helpful Hints:**

- While cell service isn't required to set up and use your Virtual Smart Fence, it is a lifesaver. The SpotOn™ Smart Collar uses a cellular connection to give you instant access to your dog's location at any point in time. Cell service is required for pet tracking and is available for a small monthly or annual fee.



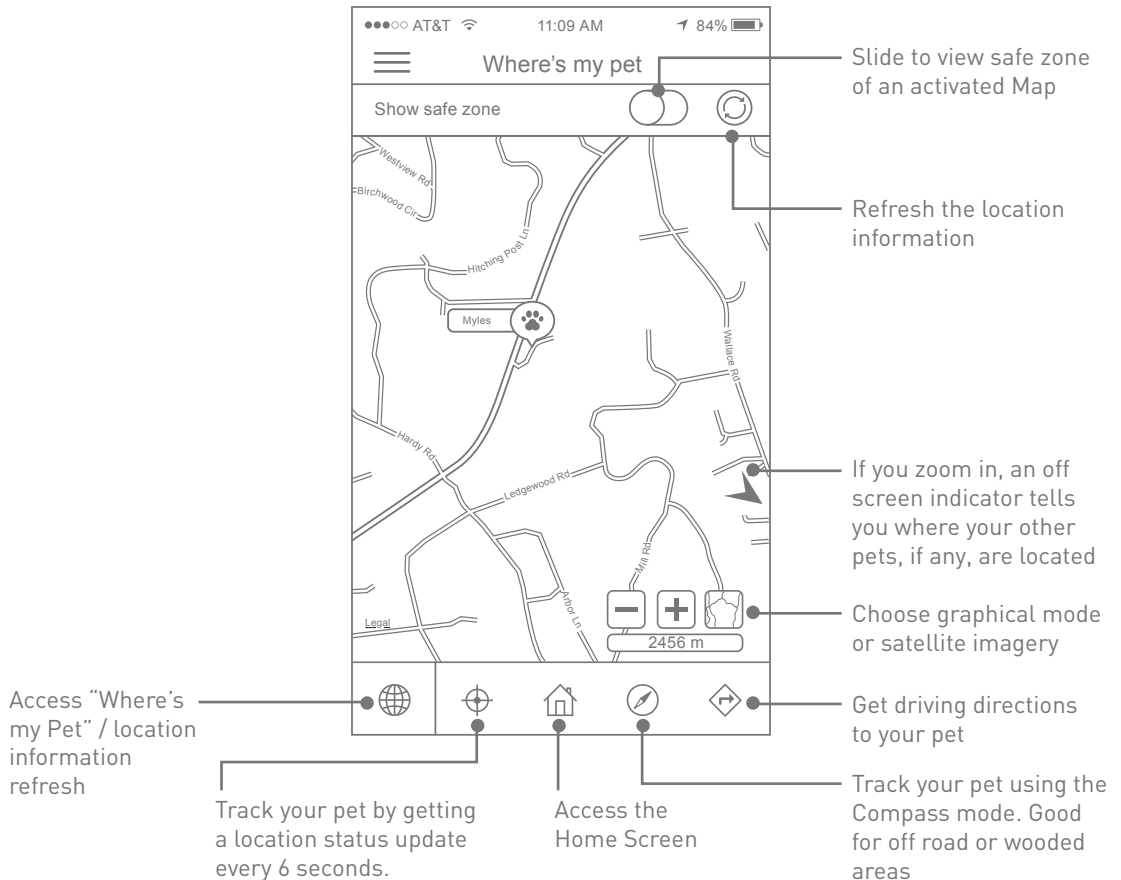
## STEP 4: GETTING STARTED WITH THE APP

When you are logged in to the SpotOn™ app, you will see the **Home Screen**, which has the following options:



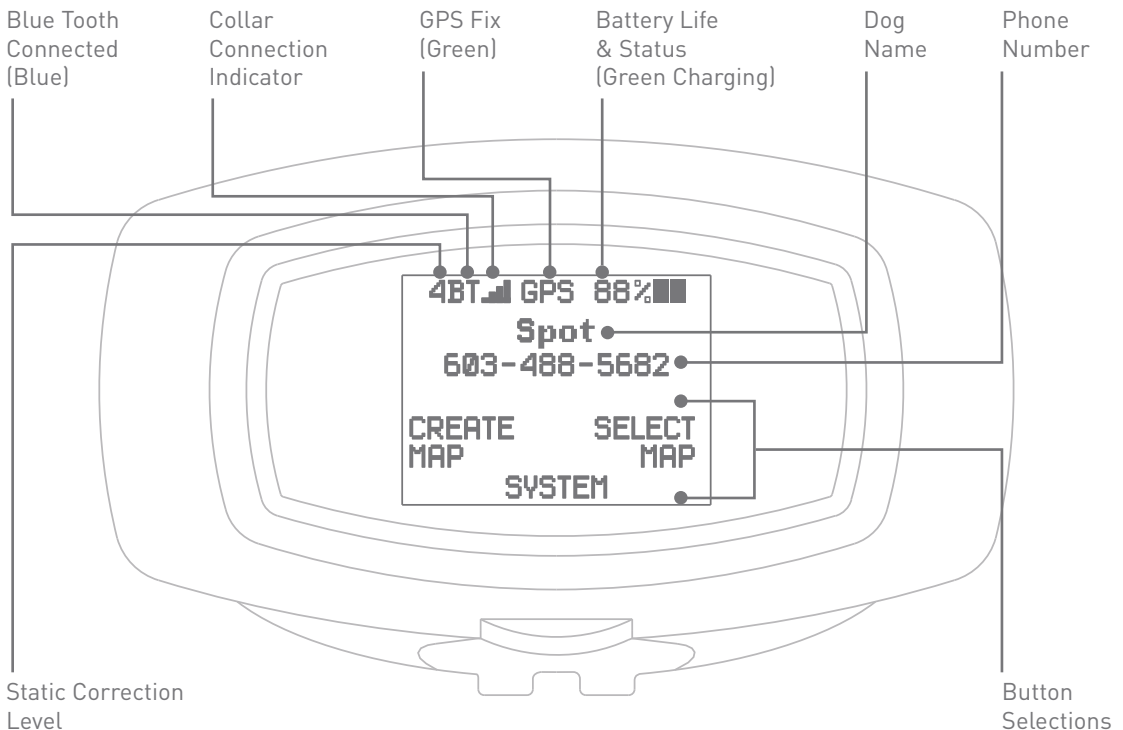
*Additional information about these menu options can be found at [SpotOnCollar.com](http://SpotOnCollar.com)*

Once the collar has been turned on and is operating (see step 5), selecting “Where’s my Pet” on the home screen gives you the location of your pet(s).

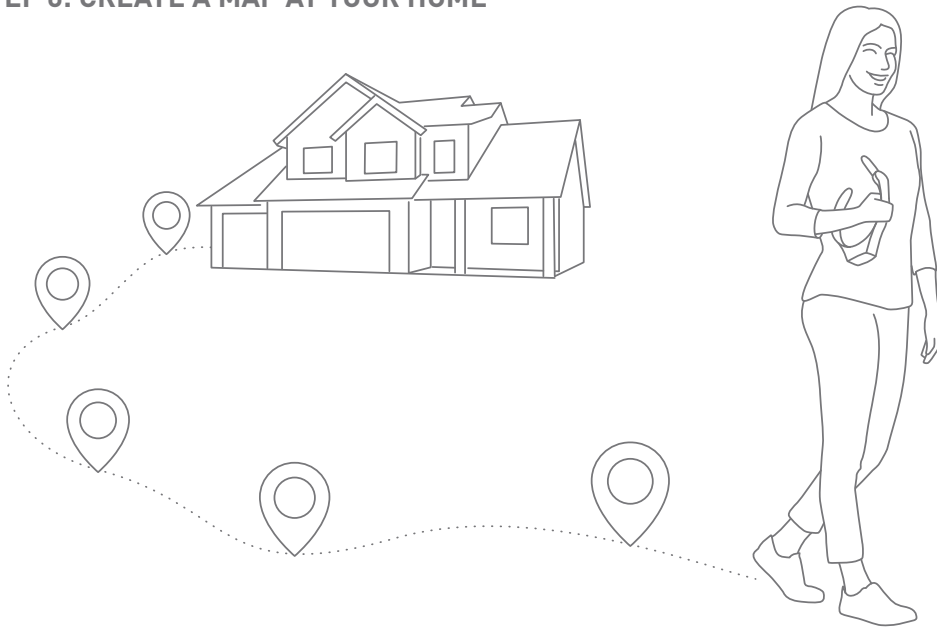


## STEP 5: GETTING STARTED WITH THE COLLAR

1. Press and hold the ON/OFF button until you see the SpotOn splash screen and release. The screen will then display Searching for Cellular Network and a small progress spinner. This message will disappear after a few seconds and be replaced by your dog's name and the contact phone number you entered in the smartphone app.
2. You will then see the **Home Screen** which has the following information and options:



## STEP 6: CREATE A MAP AT YOUR HOME



1. On the **Home Screen**, press the left navigation button to select “Create Map.”
2. Following the instructions on the collar, go outside, holding the collar with the GPS antenna at shoulder height, and wait for it to acquire a GPS signal. In an area with no obstructions (i.e. buildings, trees, etc.), this process normally takes less than 60 seconds. When the collar has acquired satellite connection, the letters GPS will appear in green at the top-center of the collar’s display screen.
3. From the collar menu, press the right navigation button to select “Custom.”
4. While holding the collar at a comfortable chest height and GPS antenna facing up, walk a path around the area in your yard where you’d like your dog to stay.

5. When you've closed a perimeter by returning to your starting point, press the right navigation button to select "End" from the collar's menu.
6. The collar will prompt you to save the map. Press the right navigation button to select "Yes" and save your map to the Smart Collar's memory.

### **Helpful Hints:**

- When creating a map, if you select "End" at any point prior to returning to your start position, SpotOn™ will automatically "snap" a virtual line between the start position and your current location ensuring your Smart Fence Area always has a closed shape.
- The collar also has a Pause mode you can use when defining a map on "tricky" or irregular terrain. For more details on how to use Pause mode, visit our website at <http://SpotOnCollar.com>.
- Avoid walking close to building or overhead structures when creating maps to avoid degradation of accuracy/performance.
- We do not recommend creating maps in irregularly shaped yards less than ½ of an acre, in urban areas with tall buildings or in dense woods because the accuracy can be degraded in these settings.
- Your Smart Collar enables you to create a convenient circular containment zone with a few button presses. It's important that your dog has been properly trained before using this feature. Please see our training video for help on creating a Circular Smart Fence.

- To create a Virtual Fence from which your dog can enter or leave the house without getting an audible alert or static correction, be sure to create the Virtual Fence so that that all or most of your home is within the Virtual Fence area. For additional information, visit our website to learn more about this and other best practices.

## **STEP 7: ACTIVATE A SAVED VIRTUAL SMART MAP**

The SpotOn™ collar stores up to 10 custom maps you can recall for different locations. Follow these steps to select and activate a map:

1. Turn the collar on.
2. On the collar's **Home Screen**, press the right menu button to choose "Select Map."
3. Use the right and left navigation buttons to scroll through the list to the desired map.
4. Press the collar's ENTER button to select the map.
5. Press the ENTER button again to choose "Activate."
6. The collar's screen will display Map N (i.e. where N is the number of the map you selected above in step 5).

Your custom Virtual Smart Fence is now active and ready for use.

### **Helpful Hints:**

- On the collar's menu system, maps are identified by numbers 1 through 10. However, you can use the smartphone app to assign each map a name (e.g. "Home", "Beach House", "Campground", etc.).

## STEP 8: GETTING STARTED WITH YOUR DOG



### Fit The Collar

Collar fit is very important to both the effectiveness of SpotOn™ and the comfort and safety of your dog. Follow these steps to ensure a proper fit:

1. Undo the clasp and place the collar around dog's neck to gauge the fit.
2. Unfasten the buckle, slide it to a location that feels appropriate for your dog's neck size, and snap the buckle into the nearest hole
3. Slip two fingers between the collar and your dog's neck. They should fit comfortably but snugly. The digital display should be facing the ground.

## Helpful Hints:

- The SpotOn™ collar is shipped with its contact points uninstalled and its static correction level set to zero. Please see our online video to determine how to choose the lowest effective correction level.
- Do not attach a leash to the Smart Collar. If a leash is required, attach a separate collar and leash below the SpotOn™ collar.
- If the collar is too loose, the contact points can rub and irritate your dog's neck.
- Always remove the collar from your dog when not in use to help prevent irritation.
- The Smart Collar's contact points should be cleaned regularly with a damp cloth or remove them from the collar to clean with warm, soapy water.



## **STEP 9: CHOOSE THE RIGHT TRAINING PROGRAM**

Training is critical to the success of your SpotOn™ system—and to the happiness and safety of your dog.

1. Visit [SpotOnCollar.com](http://SpotOnCollar.com) and choose a training program that's best-suited to you and your dog. Taking the time to do this correctly will ensure your dog remains safe and stress-free.
2. Your training program should start at home. Make sure your dog understands how the SpotOn™ system works (i.e. tones and static corrections) before using it in an unfamiliar location.
3. Do not leave your dog unattended inside any SpotOn™ Virtual Smart Fence until he/she has been properly trained.
4. Need help determining if your dog is trained properly? Take our Passport Quiz on [SpotOnCollar.com](http://SpotOnCollar.com).

### **For More Information**

**Smartphone App:** Menu Icon  Support

**Online:** <http://SpotOnCollar.com/support>

**Email:** [support@ops.tech](mailto:support@ops.tech)

**Phone:** 603-488-5682