



ANDROID INTERFACE INSTRUCTION





Warm prompt

ANDROID INTERFACE INSTRUCTION

For the sake of your safety, please don't watch the video while driving and operating a machine; Please dispatch the volume to clearly while driving to the voice of the outside world. Before operation, please read this manual and other manual system, understand the use of manual and machine related safety tips and warning signs, after reading in a readily accessible place for ready reference.

1. Pay attention to traffic safety in the first place.
2. If you meet difficulty in operating the system, please again after he parked his car in a safe place.
3. Don't let children operate this machine, lest cause personal injury and damage to the machine.
4. Please follow the traffic rules when using satellite navigation function to drive.
5. Please do not ban the use of electronic equipment or it is forbidden to use open flame, such as gas stations, brewery, strong electromagnetic interference region, otherwise may cause danger.
6. Don't maintenance, installation of the machine itself. Under the condition of the plug do not install or repair the machine, by not trained in electronic equipment or vehicles accessories installation personnel or the lack of experience Installation and maintenance of this machine is very dangerous.
7. Don't install and store the machine in direct sunlight place; don't put it in other harmful material environment, especially the LCD screen, if the installation of the LCD screen is in the air conditioner Near the air duct, please keep cool and hot air blows directly to the machine, otherwise it may damage the machine, even on the bus or personal injury.
8. Please do not use some sharp objects painted screen, don't use hard objects to press the screen, otherwise will cause damage to display or touch screen.
9. In order to guarantee the normal operation of the machine, and prevent the occurrence of fire or get an electric shock, please don't expose machine in damp air, more can't liquid drying machine.

Tips and warnings:

In order to in order to emphasize the important information of user manual,  See this tag should pay special attention to, it said some important warning and prompt information.



Safety note

Please read all instructions before installation and suggested by car audio professional installation of the machine.



The machine is suitable for car 12 v power supply system (must have ground wire), please do not install the machine in 24 v car, otherwise it will damage the machine.



In no professional guidance, not to replace the power fuse, use only a fuse of the improper, can cause the damage of the machine and cause a fire.



In order to avoid the violation of traffic rules, the driver shall not watching while driving and operating the machine, lest produce unnecessary accidents.



For safety and ensure that the product normal use, please to the professionals of this product installation, disassembly or repair the machine by yourself, lest cause the machine damage and accidents, for details please contact with the local professional car audio store.



Please prevent this product in a humid environment and the water, in order to avoid short circuit caused by electric shock, or other unnecessary damage and fire happened.

Note: in order to prevent it short out, before the installation, please remember that the car stall and breaking the ACC connected to B +.

Machine reset

1. The first use of the system before or after the replacement battery, the machine must be reset.
2. When the machine function is not normal, the machine must be reset.
3. Click restore factory Settings in system Settings interface, make the machine is in the factory the initial state.
4. Use a pointed object, press the RESET button on the panel, or click the system RESET in the system Settings, the machine will be RESET to turn it off, back to the factory the initial state.

Note: press the RESET button and the system initialization will lose time and set the value before.



Contents



ANDROID INTERFACE INSTRUCTION

1 , Main interface.....	01	12 , UNIT SETTING.....	15
2 , Main Menu interface.....	03	13 , GPS Map.....	16
3 , DVD Player.....	04	14 , 3G Internet.....	17
4 , Radio.....	05	15 , AirPlay (iphone) connection.....	18
5 , Digital TV.....	06	16 , Android interconnected.....	19
6 , Bluetooth.....	07	17 , APKthird-party software installation.....	20
7 , Video player.....	10	18 , OBD connection.....	21
8 , Music player.....	11	19 , Function parameter.....	23
9 , Photo storage.....	12	20 , Frequently Asked Questions.....	24
10 , AVIN.....	13	21 , Care and Maintenance.....	25
11 , File Management.....	14		





1、Main interface

Every time the machine system boot, first enter the main interface, the interface can slide from left to right, in any state in the upper left corner ICONS , can switch directly to the main interface, touch interface icon directly  Returns a layer on the interface, the right side of the main interface widgets can vary from bluetooth, music and other applications. The diagram below :



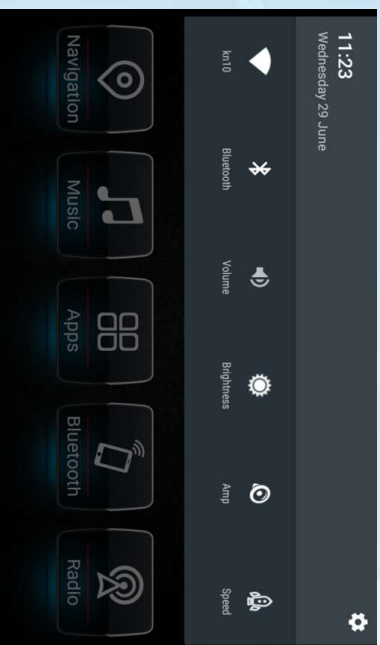


Function Operation

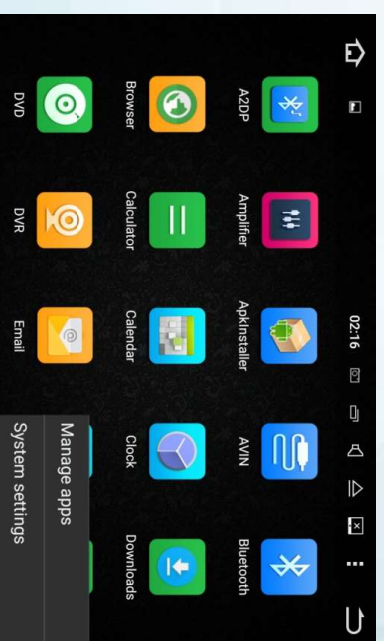
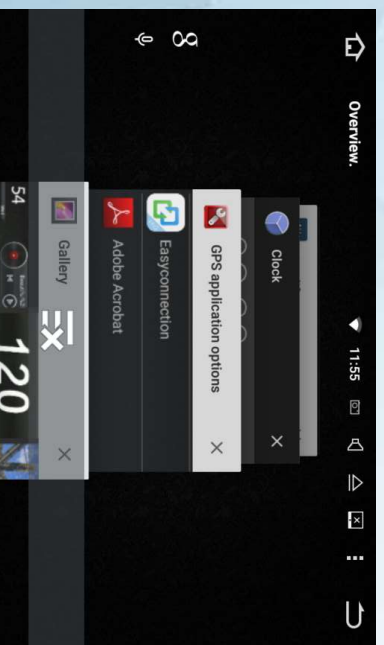
ANDROID INTERFACE INSTRUCTION



There will be a notice bar on the interface when you dragging from up to down




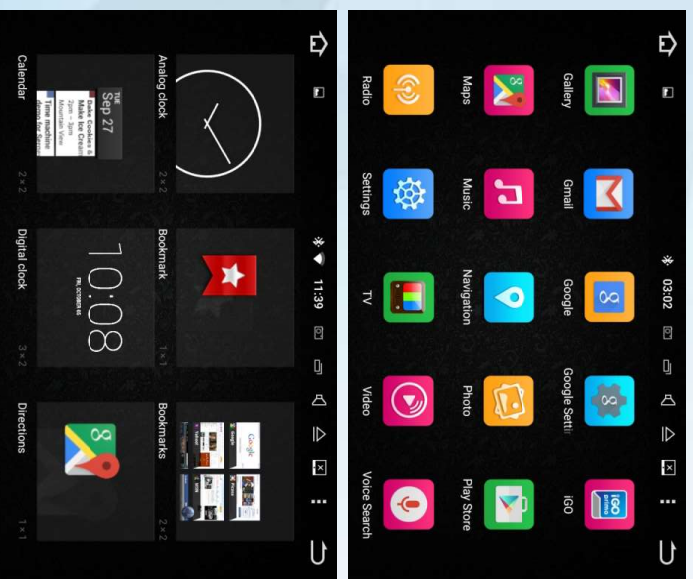
Click the icon in the upper left corner  to remove the background of the program, , click on the top left corner icon  to enter the gallery page, etc





2、 Main Menu interface

This car multimedia system provides a DVD, radio, mobile digital TVS, driving records, Internet, bluetooth, movies, music, navigation, external audio and video, and other functions. Click on the main interface to the left icon  to enter the main menu interface. Through the point of each function module icon, to enter the use of related functions. In any other state, according to the main menu or click the upper right corner to return to the icon, also can return to the main menu;



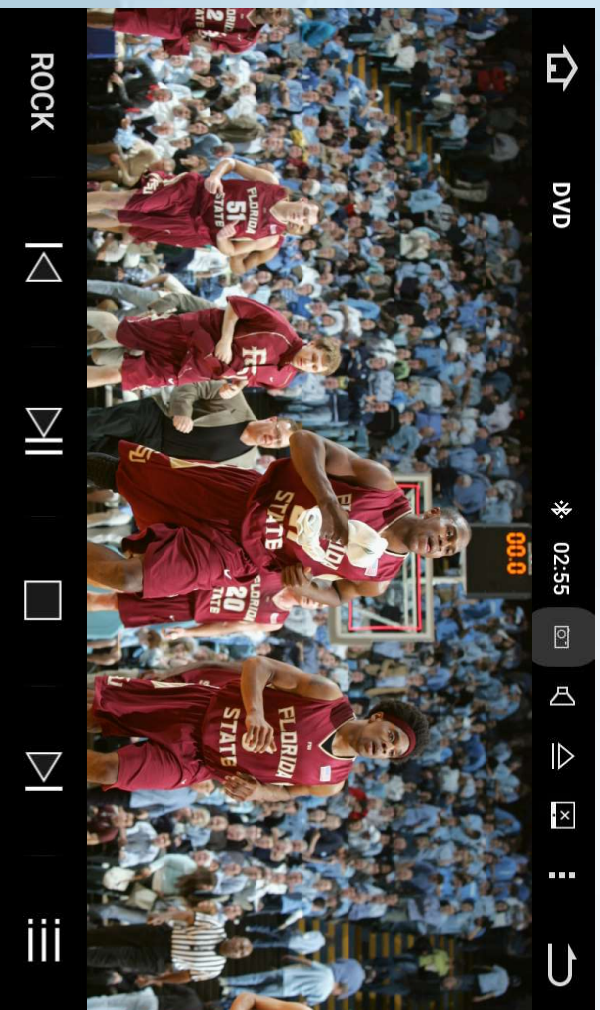
Main functions:

- 1.DVD
- 2.AV.IN
- 3.Bluetooth
- 4.Radio
- 5.Digital TV
- 6.Picture
- 7.Music player
- 8.Video player
- 9.Ipod
- 10.APP Ghost
- 11.Setting
- 12.File management
- 13.Driving recorder



3. DVD Player

In the main interface or other modes, the optical disk gently put into the plate mouth, is automatically into the CD machine, and will automatically be transferred to DVD player interface, shown in the following figure. When you playing the disc, the control menu will pop up if you touch anywhere in the scree.



DVD player interface

1.  View List
2.  Last/Rewind
3.  PLAY/PAUSE
4.  STOP
5.  NEXT/Fast Forward
6.  Sound mode switch



4. Radio

Click BAND on the panel or press the radio in the main menu to enter Radio.

Waveband switching

Touch the I con **BAND** to switch between FM/AM.

Fine-tune search

Short press and ICONS can point fine-tuning, according to the manual search, automatic stop when search to the radio.

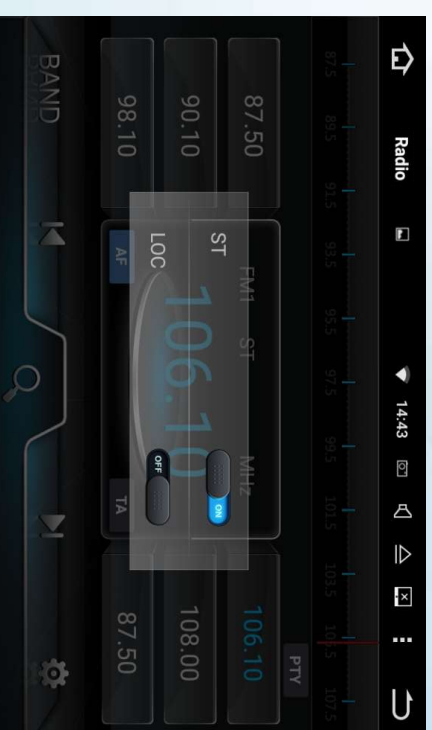
Automatically search the radio station

Long press the icon automatically enter a state of search, search the radio station will be automatically stored. Touch the icon to go again to terminate automatically search process station.

- FM radio band can store 18 (FM1 / FM2 / FM3 six), the storage 12 AM band radio (AM1 / AM2/6)
- During the process of search, search after it again will automatically stop the search.

Set up

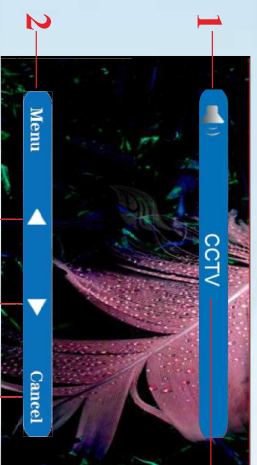
Touch the icon , the pop-up interface, touch the icon can be set up ST/LOC function of the switch.



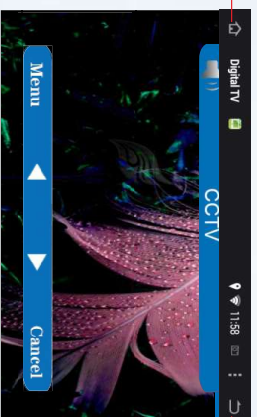


5、Digital TV

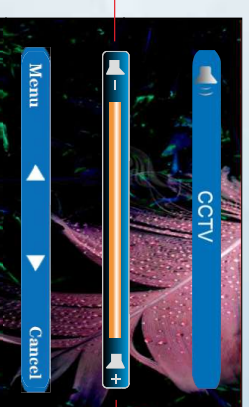
Click TV in main menu ,it will turn into digital TV interface(as graph 1) Touch the right corner of the screen for few seconds untill touchscreen surface appears(as graph 2),click  to return to main menu .



(graph 1)



(graph 2)



(graph 3)

1. Volume button, press this button to mute or adjust volume. Press the button to increase or reduce the volume.
2. Press this button can view the TV menu and choose auto searching,program list and into the setting.

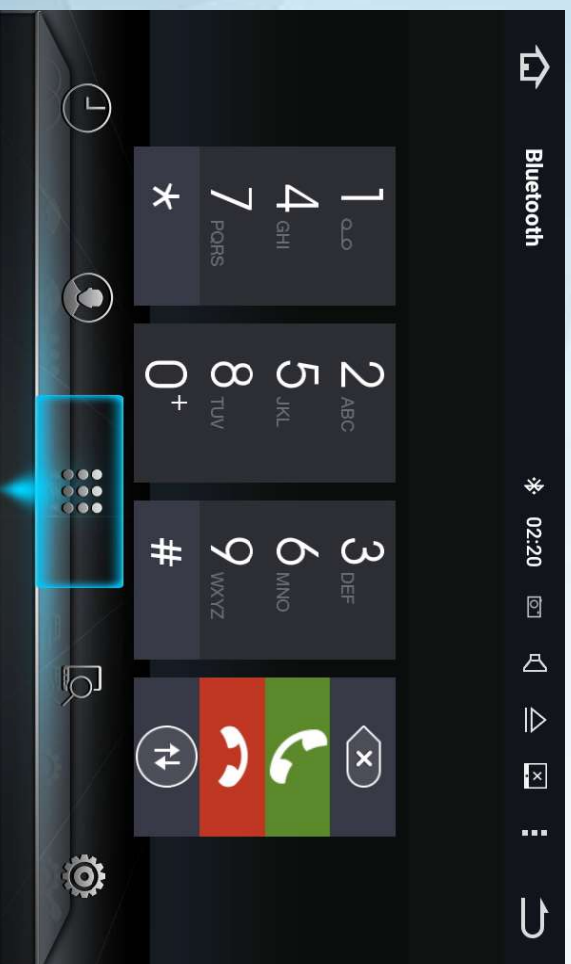
3. Previous channel
- 4.Next channel
- 5.Cancel Touch strip display
- 6.TV channels

- 7.Enter to main menu
- 8.Back to the main menu
9. Volume down
10. Volume up



6、Bluetooth

choose Bluetooth radio mode or press the Bluetooth mode key to enter the Bluetooth mode on the panel, when the phone is paired with Bluetooth, all interface icons will light up and the top of the screen will appear icon.



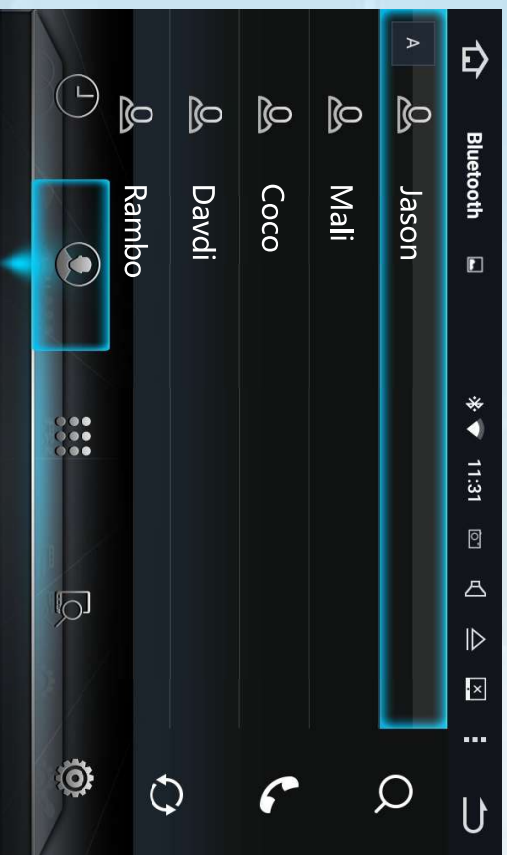
Bluetooth dial-up interface

- 1) 、  This button is used to switch to a Bluetooth dial-up interface
- 2) 、  This button is used to switch to a Bluetooth phone book interface
- 3) 、  This button is used to switch to a Bluetooth phone recording interface
- 4) 、  This button is used to pair a Bluetooth device screen, tap to search for Bluetooth pairing name;
- 5) 、  Bluetooth settings interface;
- 6) 、  the Dialdelete key, press the button to delete;
- 7) 、  Answer / dial button
- 8) 、  End key
- 9) 、  Shift key, when Bluetooth calls, switching sound between mobile and vehicles






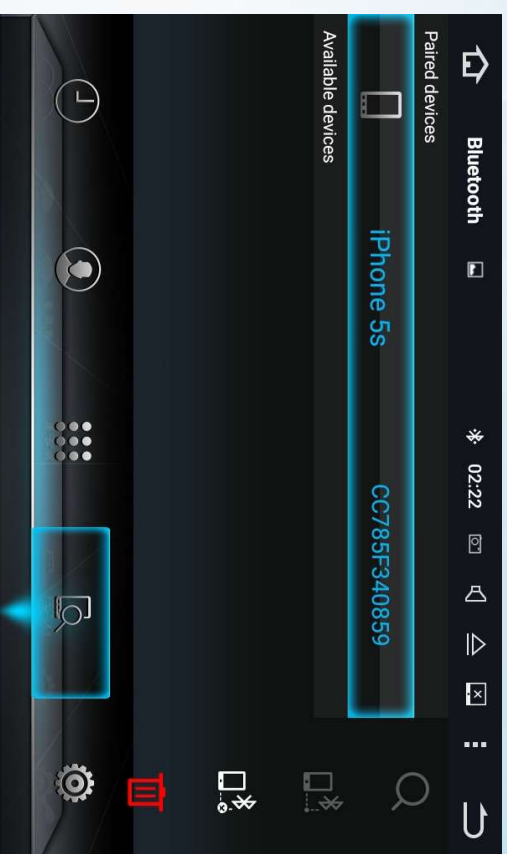
Function Operation

ANDROID INTERFACE INSTRUCTION







Bluetooth phone book interface

- 1)、 for the phonebook quickly search the first letter of the name ;
- 2)、 In this state the number, dial the selected phone number ;
- 3)、 Download phonebook in photo ;



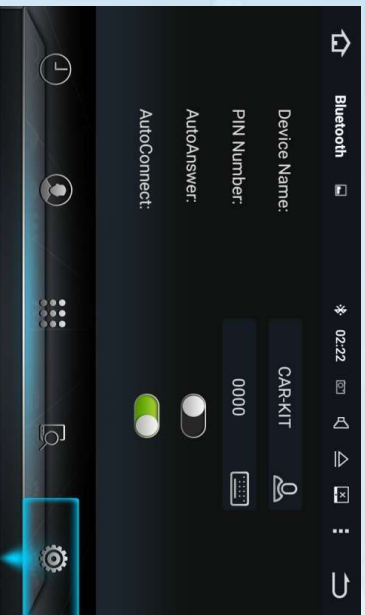
Bluetooth pairing record interface

- 1)、 search for the phone pairing name;
- 2)、 connecting the searched pairingn names ;
- 3)、 Disconnect selected Bluetooth pairing records ;
- 4)、 Delete the selected Bluetooth pairing records ;



Function Operation

ANDROID INTERFACE INSTRUCTION






Bluetooth settings interface



Bluetooth music interface

- 1)、Setting the name of the machine Bluetooth device
- 2)、Setting the name of the machine Bluetooth device

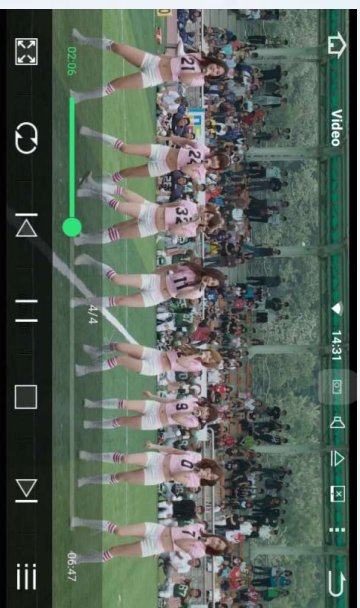
- 1)、  Bluetooth music play / pause button;
- 2)、  Play the last song of Bluetooth music
- 3)、  Play the next song of Bluetooth music ;



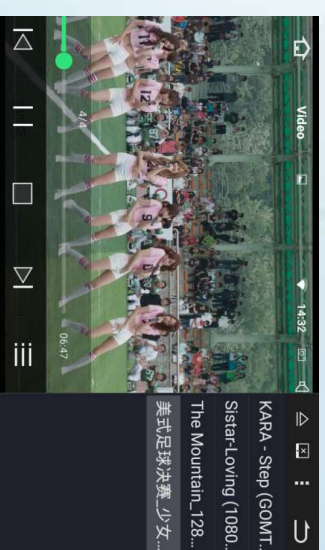
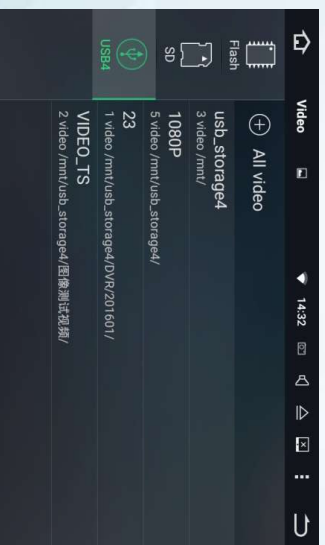
7、Video player

1、After Click to play video modules can play audio and video file the system comes or external media card and USB /SD card inside the mouth of Multimedia files; support H.263 P3, MPEG-4 Simple Profile, H.264 / AVC ...format.

2、Video interface from right to left drag playlist can be shown, from left to right drag can display the folder management interface.



- 1、 Fullscreen button
- 2、 Song Play mode
- 3、 the last
- 4、 play/pause
- 5、 stop
- 6、 the next
- 7、 the list of video files;





8、Music player

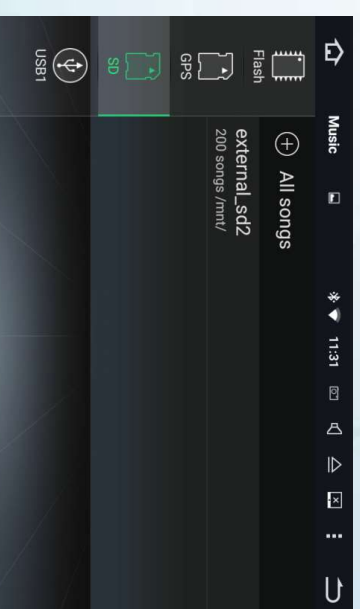
1、fter Click to play audio modules can play audio and video file the system comes or external media card and USB /SD card inside the mouth of Multimedia files; support: WMA MP3 and other audio formats...



Music player interface

2、 music / video interface can be displayed from right to left and drag the playlist, drag from left to right to display the folder management.

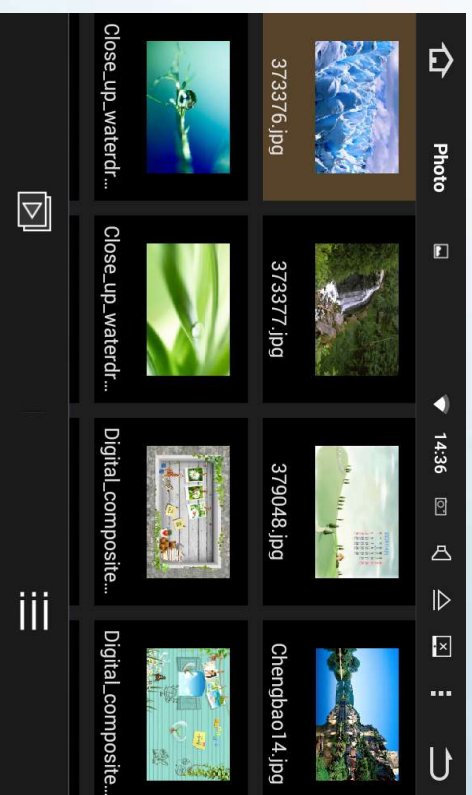
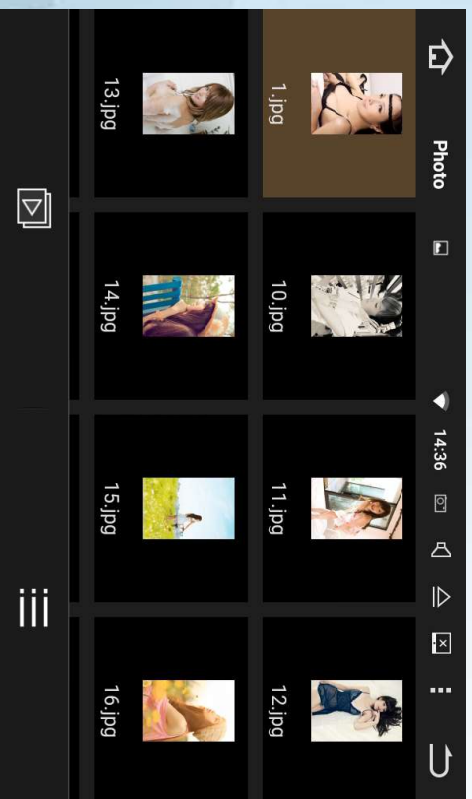
- 1)、 Song Play Mode
- 2)、 Last
- 3)、 play/pause
- 4)、 Next
- 5)、 Song playlists
- 6)、 Find the song list
- 7)、 Switch lyrics and spectrum





9、Photo storage

Click photo /It will display the photo from Photo store /Photo list display mode ,The photoes are all from RAM/SD/USB. In the photo store, You can not only loading the photos in the storage but also can play the video file from SD/USB ,as below shows:



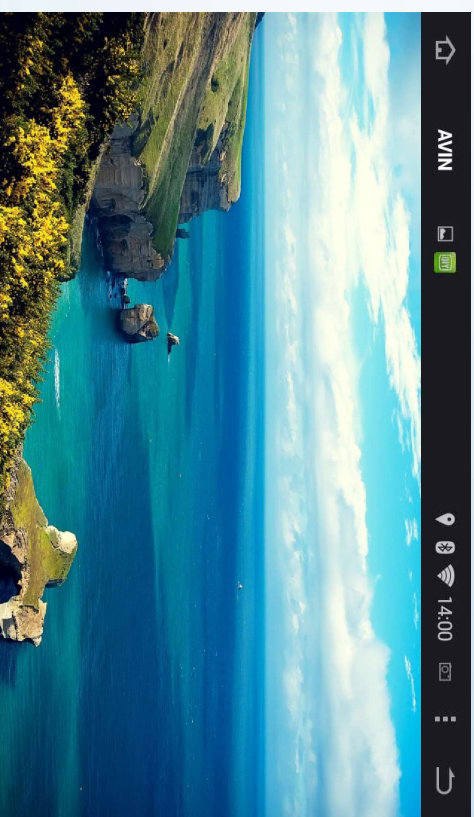


Function Operation

ANDROID INTERFACE INSTRUCTION

10、AVIN

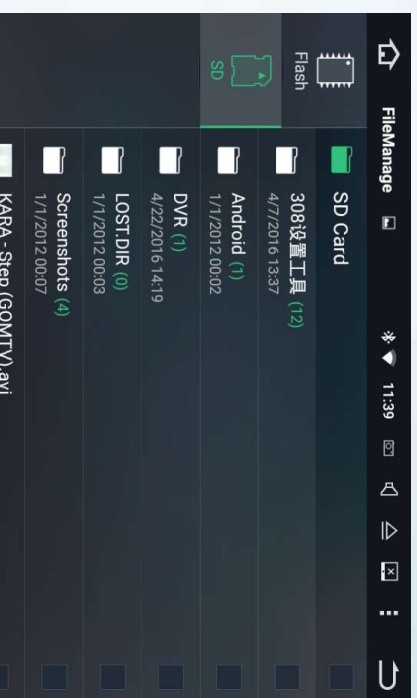
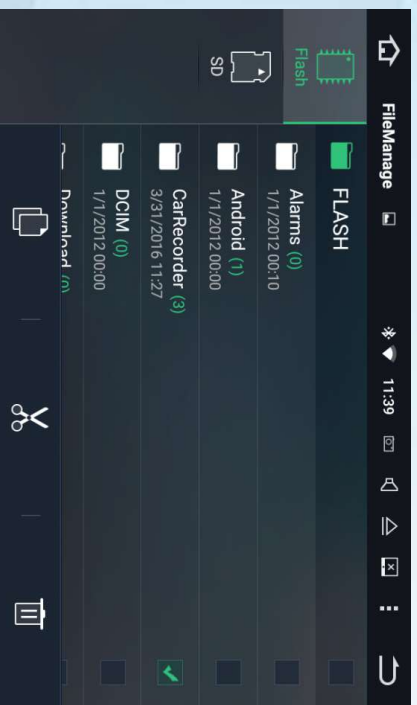
Select the "AVIN" icon to the external video and audio on the unit screen display, while sound is output.
As shown below:









11、File Management

In File management you can copy the files from local memory to host memory (as photo shows)



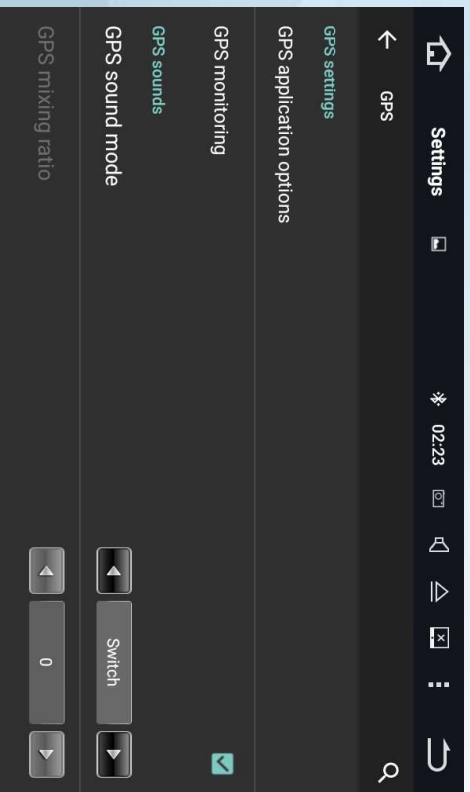
- 1)、  storage :storage files from host memory
- 2)、  Copy:Tick the files which you need and then click copy
- 3)、  Paste :Paste the files to the place where you want it to be
- 4)、  Delete :Confirm the files need to delete and click delte



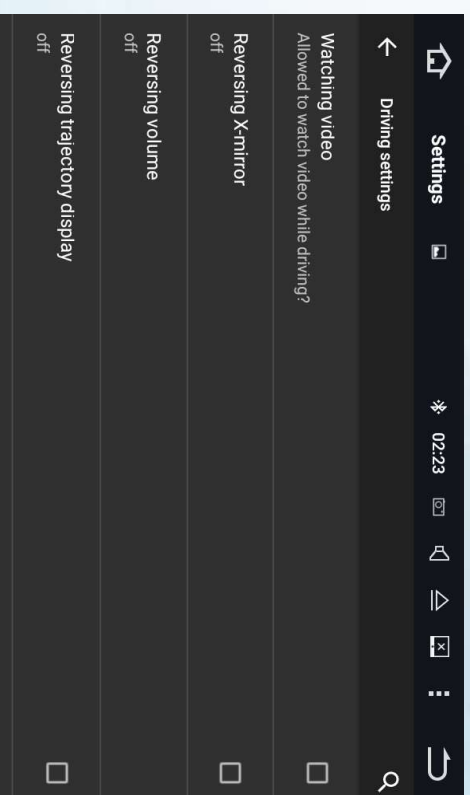
12、UNIT SETTING

Click setting in Main munue ,turn into setting screen for wifi, audio, app, gps setting, driving setting, language input, date, time etc, we will just describe some of the regular functions

1. GPS, When GPS and music give the sound at the same time, the mode is adjustable between the background audio volum and gps mixing audio .



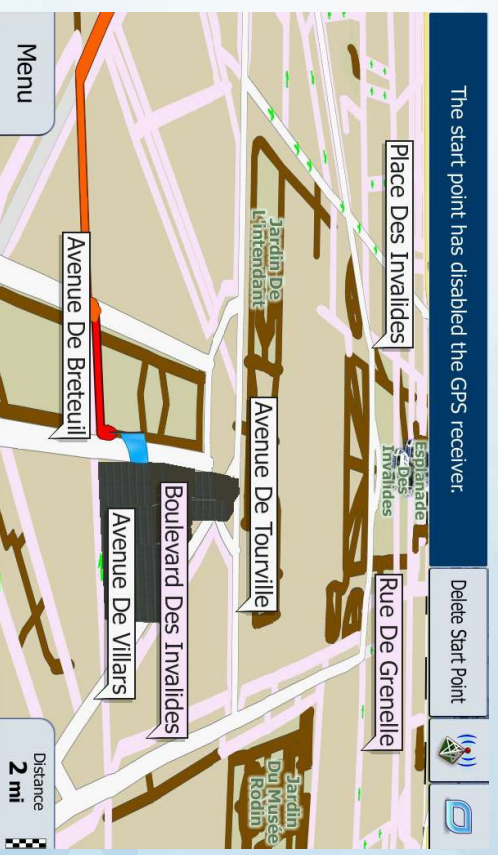
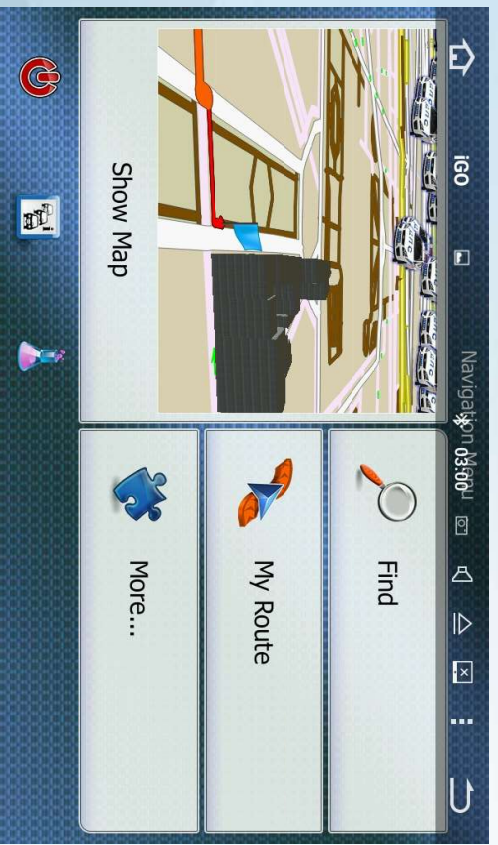
2. Driving setting, Braking is able to start a mode , switch on/off the warning ,whenvedio play on.






13、GPS Map

Firstly,installing the GPS in the APK manager , After finish installmen , please take more for referencefrom the gps operation instruction.






14、3G

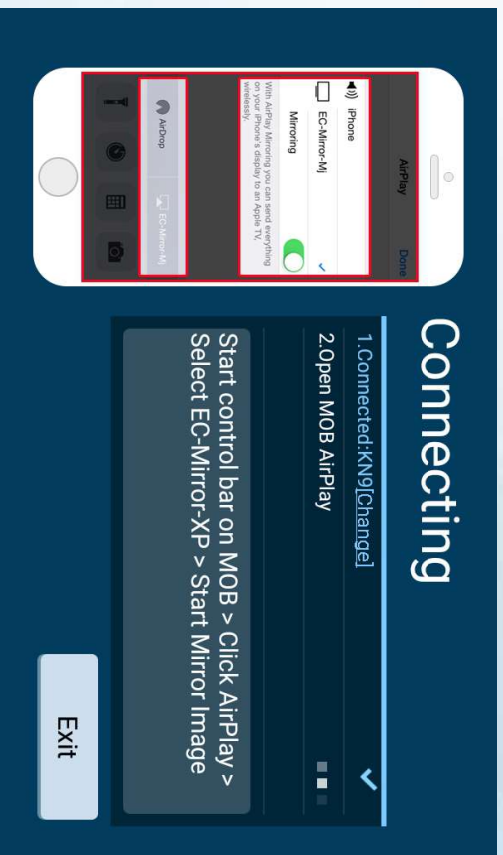
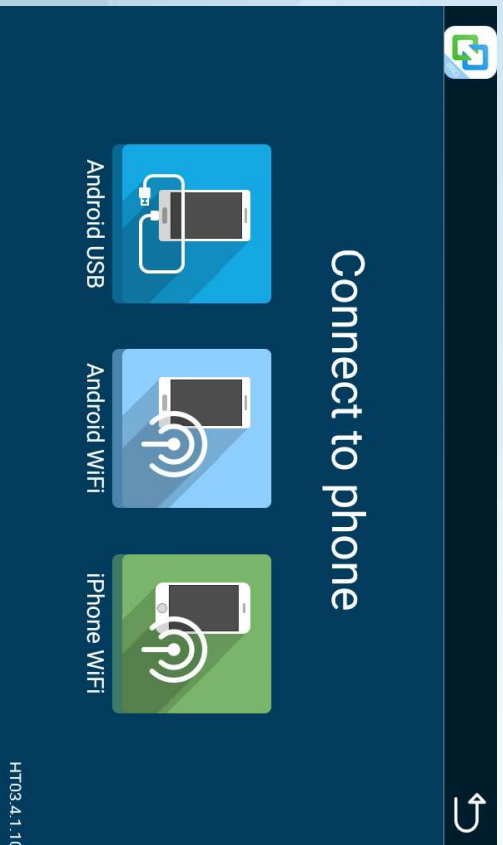
3G : insert the USB 3G devices, automatically after about 30 seconds in the 3G icon  appears at the top of the tip, can use 3G Internet access





15、 AirPlay (iphone) connection

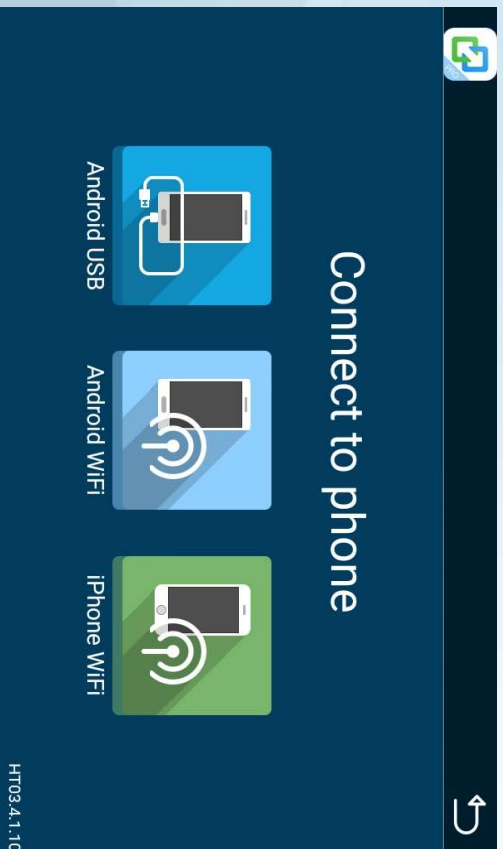
In the main screen click  icon in the following Internet interface;Apple mobile phone to open car machine WIFI after personal hotspot connection iphone personal hotspot, restarted the car machine for ITV @ 3 start automatically, and then hold down the appleon the bottom of the screen to launch the menu bar select AirPlay, then check the ITV @ 3 and open mirror finish apple mobile interconnection.






16、Android interconnected

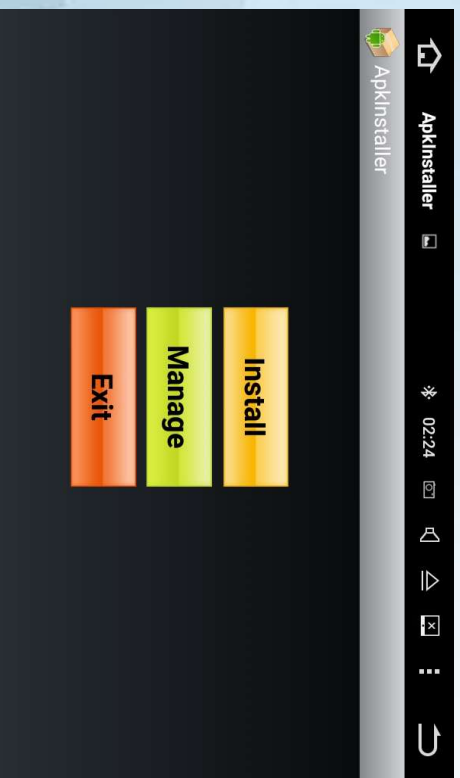
At home screen click on icon, click the icon in the following Internet interface, after open android debug mode, connecting with cable car USB port, and then open the icon automatic connection and completes the image transmission, when after the success of the bluetooth connection, realizes the image and voice synchronous transmission.



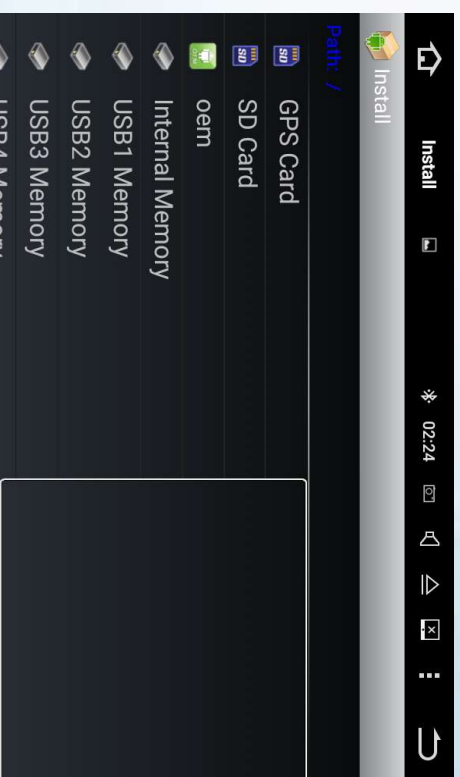


17、APK the third-party software installation

Click on the icon  to enter the APK installer, choose "install", Find the installation package file in the storage path, and then install it follow the step tips; In the installation process, it will display a security tips as the photo below.



1

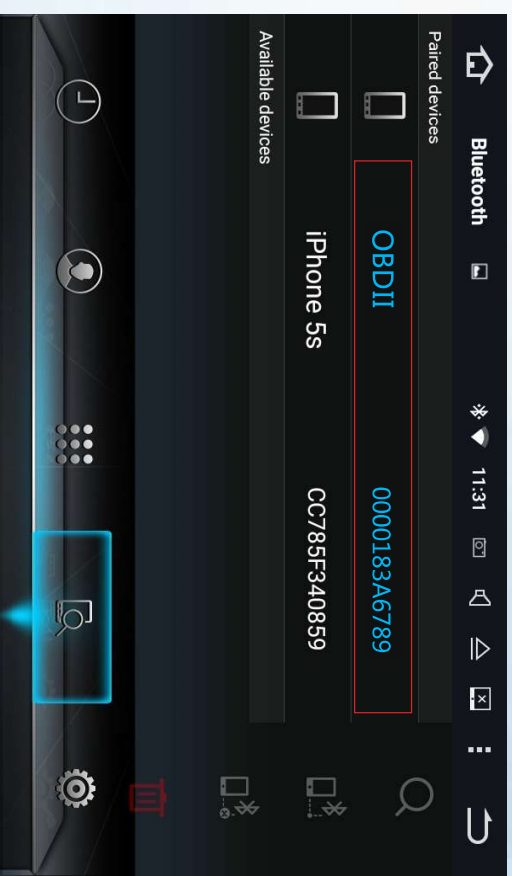
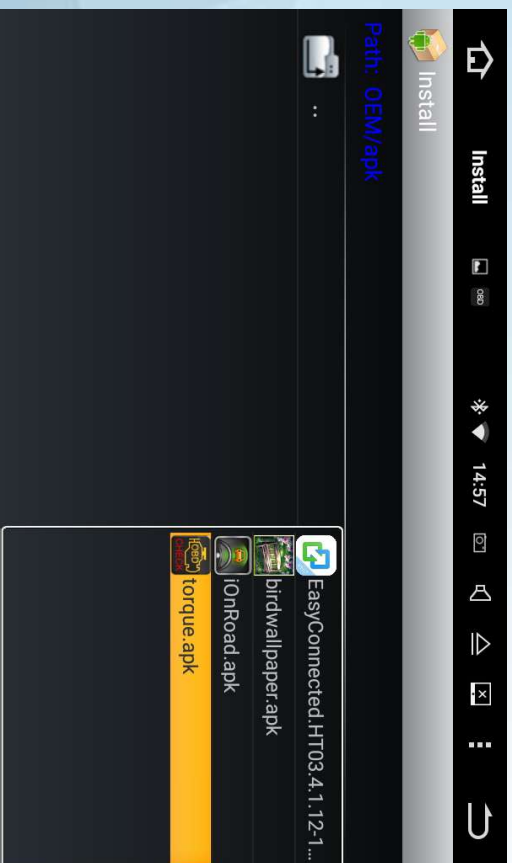


2



18、 OBD connection

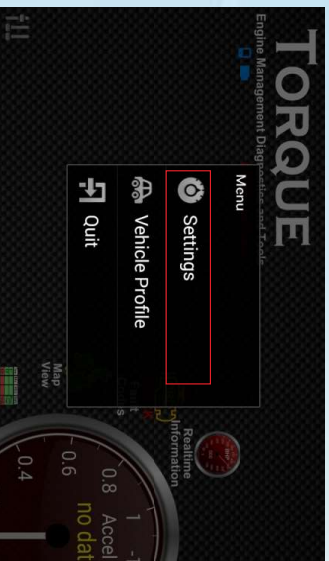
find the  icon in main menu to enter the OEM, find torque.apk file and install it, after installing then enter to search OBD Bluetooth name and connect it, and then click on the  icon on the main menu to enter the OBD, after setting OBD2 adapter setting, the connection type and the Bluetooth device address, connect successfully.



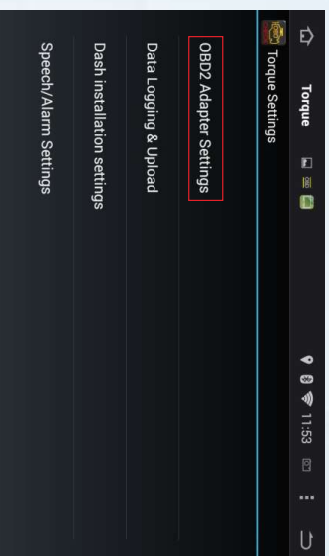


Function Operation

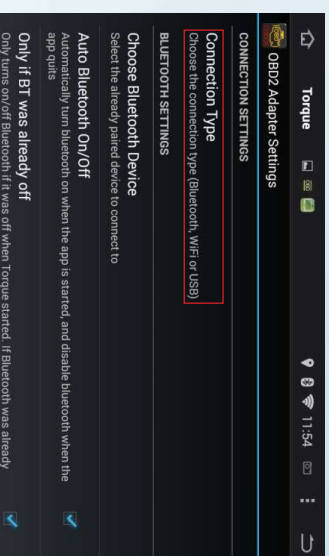
ANDROID INTERFACE INSTRUCTION



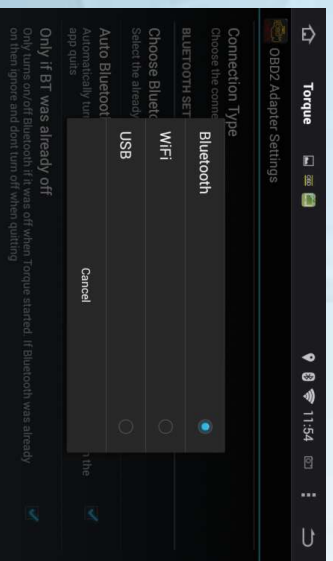
3



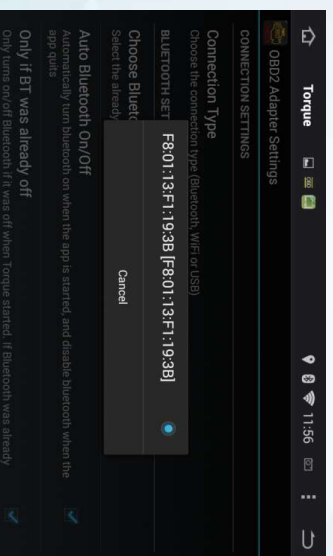
4



5



6



7



8



Function parameters

ANDROID INTERFACE INSTRUCTION

Specifications	FM=radio section
Operating voltage: 1.2V	FM Frequency range: 87.5MHz-108.0MH
Operating voltage range: 9V-15.5V	Signal to-noise ratio (-50db): 15dBu sensitivity (-30db): 10dBu
Signal to-noise ratio (-50db): 15dBu	Frequency response range: 30KHz 15KHz (3dB)

DVD/CD PLAYERPlay

Compatible formats : DVD-R , DVD-RW , DVD+R , DVD+RW , CD-R , CD-RW , MP3 , WMA , HDCD, SVCD, MPEG, JPEG

Audio signal to noise ratio : 85dBa	Dynamic range : 95bb	Dynamic range : 20Hz-20KHz (3dB)
Digital Audio Sampling : 24bit	Electronic Stability Program (ESP)	DVD 2-3s Mp3 100s Mechanical Stability Program : 10 200KHz, X/Y/Z : 1.0G Power output : 50W*4 Input Impedance: 4 Ohm SNR: 70dBa

Video section	display section	Ambient temperature:
Format: NTSC, PAL (automatic identification)	Screen size : 7 inches	Operating temperature: -20°C + 60°C
Output: 1VP-P (75 Ohm)	Screen Type : TFT	Storage temperature:-30°C + 70°C
Input: 1VP-P (75 Ohm)	Screen resolution : 1024*600	Working humidity: 45% -80%
		Storage humidity: 30-90%



Frequently Asked Questions

ANDROID INTERFACE INSTRUCTION

1. Question: Failure to open the unit

Reason : Haven't installed the canbus properly

Sol ut i on : Configure the canbus properly

2. Question: Failure to enter the GPS navigation

Reason : Not setting the gps navigation path correctly

Sol ut i on : Reset the gps navigation route

3. Question: No BT function

Reason : No phone connection

Sol ut i on : Enter the BT set up and check

the machine name and code

4. Question: Failure of touch screen

Reason : Touch screen deflected

Sol ut i on : Recalibrate the touch screen

5. Question: Failure of specific speaker

Reason : Incorrect audio set up

Sol ut i on : Set audio correctly

6. Question: Failure of navigation's signal

Reason : Not connect GPS antenna or not connect

the GPS antenna correctly

Sol ut i on : Connect the GPS antenna properly

7.Question:Failure of play CD fluency

Reason : the broken CD

Sol ut i on : clean or replace the CD

8. Question: when paly the VCD, the replay and search functions missing

Reason: PBC function loop

Solution: stop the PBC function

9,Question:GPS unable to locate

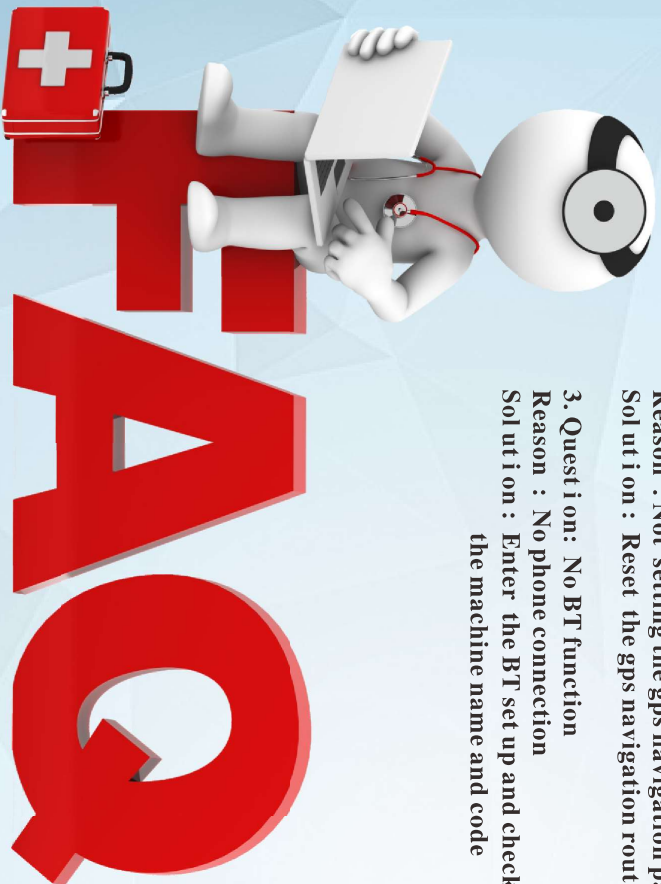
Reason: no GPS signal,or the GPS antenna plug-in trouble

Solution :move the location,or replace the GPS antenna,or plug-in again

10, Question:can't play the CD

Reason : forgot put into the CD inside

Solution : put into the CD





The car entertainment & navigation systems need to be operated carefully, considering its excellent design and technology. The following suggestions will help you to fulfill the obligation of warranty terms and conditions.

1. Keep all the parts, accessories of the car entertainment & navigation systems away from the children.
2. Please keep dry. The rainwater, moisture and other kinds of liquid may contain mineral substance, which will corrode the electronic circuits. The soaking or moisture will ruin the components, cause irreparable damage.
3. Do not use or put the headunits in the dusty or smuddy place, which may damage its detachable elements.
4. Keep the headunits away from the extremely hot place. The high temperature will shorten the acceptable life, damage the battery, deform or melt the plastic parts.
5. Keep the headunits away from the extremely cold place. Otherwise the temperature increment may accumulate moisture inside, which will damage the circuit board.
6. Please do not throw, knock or shock the machine with great force, otherwise it may be ruined.
7. Do not attempt to destructure the machine, this will damage it, especially to the non-professionals.
8. Do not use the strong chemicals, detergent or strong abluent to wash the machine.
9. Keep away the electromagnetic, radioactive or magnetic equipment when use the machine or store it.
10. When wipe the screen, use the soft and clean cloth, ordinary paper is not recommended.
11. The LCD screen is scraped easily, please use the touch pen when operate. To avoid the damage on the screen, other sharp objects are not recommended.



ANDROID INTERFACE INSTRUCTION

