

RACKLESS

Awning Mount System

Important:

Installation should only be done by a qualified person and it is the responsibility of said person to ensure correct fitment.

Please read all procedures and precautions before installing and using the Rackless Awning Mount System. If you have any questions please contact us via email on the back of this installation manual.

Care Instructions:

Clean vehicle roof before fitting Rackless roof mounts.

Tools Required:

- T30 & T45 torx security socket bit and torque driver
- Silicon and caulking gun
- Flat blade screwdriver

Kit Contents:

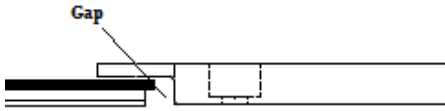
- 2x Rackless bracket assemblies
- 4x T30 Stainless security bolts
- 4x Stainless washers
- 2x Paint protection strips
- 1x T30 torx bit
- 4x T45 Stainless security bolts
- 6x Stainless pop-rivets
- 2x Stainless roof mounts

Fitment Instructions:

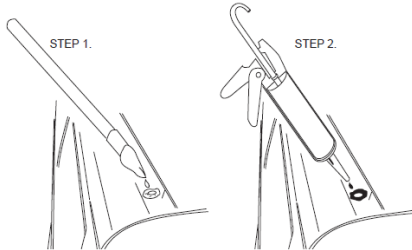
1. Remove roof bar from track as per OEM recommended instructions.

Note: Colorado Z71 has 4x bolts from the top under the plastic covers.

2. Before installation check bracket and mount application is compatible with your vehicle.
3. Place the mount in the channel where previous roof bar was mounted.

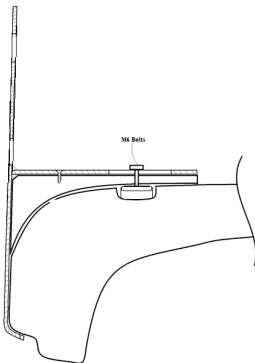


4. Apply silicon around each hole.



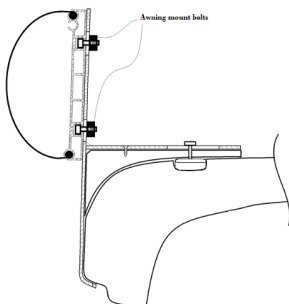
5. Place the mount over the holes in the roof channel using the M8 Stainless security bolts to position.
6. Apply paint protection strip to sit directly beneath both Rackless awning mounts.
7. Rackless awning mounts to be fitted to the roof gutter and mounts of the car with 4x M6 bolts and washers using an Anti-theft torx bit. Tighten bolts evenly to a torque of 6Nm.

Note: This will be the same method if being fitted to roof tracks.



8. Fit awning to awning mount using the bolts provided with awning and tighten to specs within awning instructions.

Note: Some mounts have differing bolt length's, ensure there is a significant amount of bolt through the mount.



Maintenance Recommendations:

It is essential that all bolts and connections be checked after driving a short distance when you first install your awning mounts.

All bolt connections should be checked again at regular intervals (more often on rough road conditions). Ensure bolts are to specified torque as per above installation instructions.

The high density foam and paint protection strips should be inspected at regular intervals and replaced when required as these materials will not outlast the lifetime of the mounts. Please contact us if you require material replacements.

Sensitivity to cross winds and behaviour in curves:

The handling characteristics of the vehicle changes with the wind drag of an awning, for safety reasons we recommend you exercise extreme care when driving.

Please remove awning and brackets when putting vehicle through an automatic car wash.

When the awning is in use ensure the guy ropes are tied securely to pegs, especially in windy conditions, or as per awning manufacturer's setup instructions.

Do not let water sit on the awning. When the awning is out ensure there is enough fall to carry any rain off the side.

Note to Dealers and Fitters:

It is your responsibility to ensure instructions are given to the end user or client.

Additional Note:

No responsibility or liability will be held against supplier for incorrect fitment of product resulting in component or vehicular failure or damage. By purchasing this product you agree to all of these conditions.

Chalming Creations will warrant the original purchaser against manufacturing faults and defects in material for a period of 12 months from original purchase date.

- To obtain warranty, Chalming Creations must be provided with proof of purchase and photographic proof of fault. This warranty does not cover the removal or re-installation of the product.
- To obtain warranty, Chalming Creations must be provided with proof of fitment by a qualified person.
- Chalming Creations reserves the right, at its option, to repair, replace or refund the purchase price of a faulty or defective product or its components if returned to the place of purchase during the warranty period.
- When returning a product for warranty assessment it must be accompanied with the customer's name, address, contact phone number, a clear description of the fault and a copy of the original sales receipt detailing the date of purchase.
- For bent products being returned, they will be tested to hold 30kg each. If the desired weight is held they will not be classed as defective and classed as improper use or acts of nature. A typical awning weighs approximately 13kg and will not bend the product if set up and fitted correctly. Please ensure your awning is set up so it does not collect water and secured down with guy ropes as per manufacturers instructions.
- This warranty does not apply to damage due to accident, misuse, abuse, misapplication, collision, modification, improper installation or improper maintenance.

For change of mind purchases, the product must be returned in full within 30 days of the shipment date. A partial refund will be issued (minus any merchant, postage and packaging costs) with return postage being the purchasers responsibility.