

# RACKLESS

## Awning Mount System

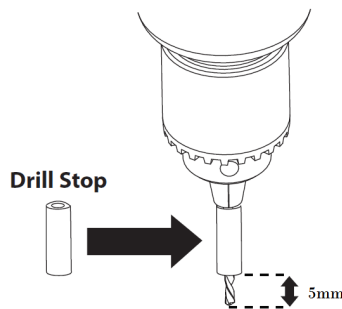
### Important:

Installation should only be done by a qualified person and it is the responsibility of said person to ensure correct fitment.

Please read all procedures and precautions before installing and using the Rackless Awning Mount System. If you have any questions please contact us via email on the back of this installation manual.

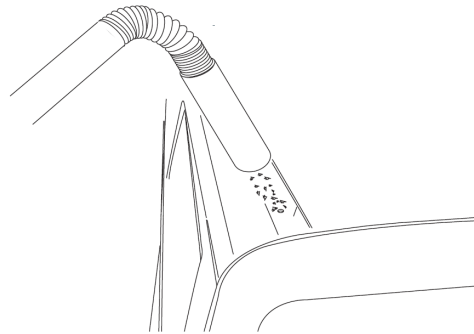
### Warning!

Please follow these steps when drilling the roof to avoid damage to the side curtain airbag mechanism. Failure to follow these steps will result in vehicle damage. It is recommended the vehicle roof head lining should be removed to ensure nothing is below the drilled position.



### Warning!

Max Drill Depth is **5mm**



Drill approximately halfway and then use a vacuum to remove swarf from roof channel. Continue drilling the hole, repeat operation for remaining holes.

### Care Instructions:

Clean vehicle roof before fitting Rackless roof mounts.

### Tools Required:

- Vacuum cleaner
- 5mm drill bit with depth stop
- Marking pen
- Rivet gun with head to fit inside 12mm counter sunk hole
- Cordless or power drill
- Hammer and centre punch
- Rust stop paint and brush
- T30 & T45 torx security socket bit and torque driver.
- Silicon and caulking gun

### Kit Contents:

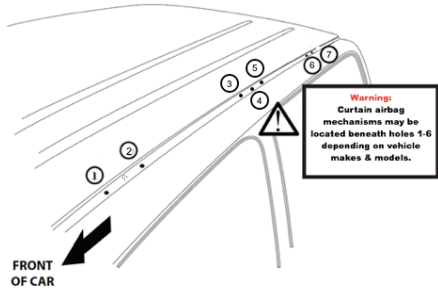
- 2x Rackless bracket assemblies
- 4x T30 Stainless security bolts
- 4x Stainless washers
- 2x Paint protection strips
- 1x T30 torx bit
- 5x T45 Stainless security bolts
- 2x Stainless pop-rivets
- 2x Stainless roof mounts

## Fitment Instructions:

1. Remove roof bar from track as per OEM recommended instructions.

**Note:** MUX LS-T has 2x bolts from the top under the plastic covers each end and 1x bolt in the middle.

2. Before installation check bracket and mount application is compatible with your vehicle.

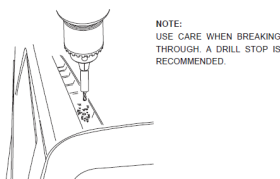


**Note:** Hole numbers below are reference of above drawing.

3. Apply silicon around hole 1 & 2 and along the mount length, Place the front mount in the channel over the holes and secure with 2x T45 Stainless security bolts.
4. Place the rear mount in the channel and align the rear mount hole with hole number 5 temporarily secure with 1x T45 Stainless security bolt.
5. Mark the holes 3 & 4 using a marking pen and then remove the mount.
6. Accurately centre punch all holes before drilling.



7. Marked out holes can now be drilled using a 5mm drill bit with a drill stop. Set up the drill stop ensuring you don't drill through the roof lining.

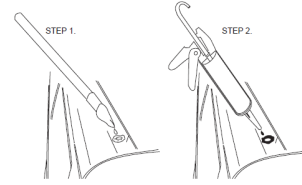


8. Use a vacuum or air blower to remove swarf from the roof channel.

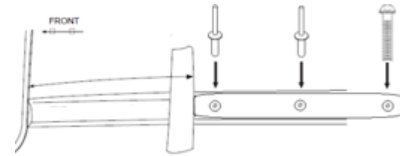


9. Apply anti rust paint to the inside and surrounds of all holes.

**Note:** Allow for time to dry before applying silicon.

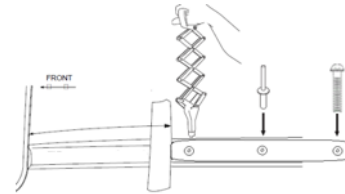


10. Apply silicon around hole 3,4&5 and along the mount length. Accurately place the rear mount over the drilled holes in the roof channel using the rivets to position.



11. Secure with 1x T45 Stainless security bolt in hole 5.
12. Using rivet gun, rivet the mount into place, make sure all rivets are seated firmly onto the base of the mount.

**Note:** Once pop rivets are fitted counter bore can be filled with silicon to prevent from holding water.

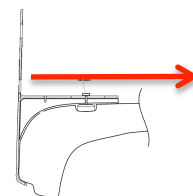


13. Apply silicon around hole 6 & 7 and install 2x T45 Stainless security bolts to blank off holes from weather.
14. Apply paint protection strip to sit directly beneath both Rackless awning mounts.
15. Rackless awning bracket to be fitted to the roof gutter and mounts of the car with 4x M6 bolts and washers using an Anti-theft torx bit. Tighten bolts evenly to a torque of 6Nm.

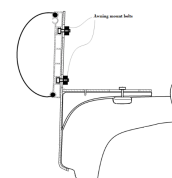
**Note:** The rear bracket is fitted to the front set of holes in the mount.

**Note:** Some mounts have differing bolt lengths, ensure there is a significant amount of bolt through the mount.

**Note:** Ensure bracket is square and firmly pushed towards centre of the vehicle. If not pushed square and inward, brackets may cause wear/damage to door dust seal/door sill.



16. Fit awning to bracket using the bolts provided with awning and tighten to specs within awning instructions.



### ***Maintenance Recommendations:***

It is essential that all bolts and connections be checked after driving a short distance when you first install your awning mounts.

All bolt connections should be checked again at regular intervals (more often on rough road conditions). Ensure bolts are to specified torque as per above installation instructions.

The high density foam and paint protection strips should be inspected at regular intervals and replaced when required as these materials will not outlast the lifetime of the mounts. Please contact us if you require material replacements.

### ***Sensitivity to cross winds and behaviour in curves:***

The handling characteristics of the vehicle changes with the wind drag of an awning, for safety reasons we recommend you exercise extreme care when driving.

**Please remove awning and brackets when putting vehicle through an automatic car wash.**

**When the awning is in use ensure the guy ropes are tied securely to pegs, especially in windy conditions, or as per awning manufacturer's setup instructions.**

**Do not let water sit on the awning. When the awning is out ensure there is enough fall to carry any rain off the side.**

### ***Note to Dealers and Fitters:***

It is your responsibility to ensure instructions are given to the end user or client.

### ***Additional Note:***

No responsibility or liability will be held against supplier for incorrect fitment of product resulting in component or vehicular failure or damage. By purchasing this product you agree to all of these conditions.

Chalming Creations will warrant the original purchaser against manufacturing faults and defects in material for a period of 12 months from original purchase date.

- To obtain warranty, Chalming Creations must be provided with proof of purchase and photographic proof of fault. This warranty does not cover the removal or re-installation of the product.
- To obtain warranty, Chalming Creations must be provided with proof of fitment by a qualified person.
- Chalming Creations reserves the right, at its option, to repair, replace or refund the purchase price of a faulty or defective product or its components if returned to the place of purchase during the warranty period.
- When returning a product for warranty assessment it must be accompanied with the customer's name, address, contact phone number, a clear description of the fault and a copy of the original sales receipt detailing the date of purchase.
- For bent products being returned, they will be tested to hold 30kg each. If the desired weight is held they will not be classed as defective and classed as improper use or acts of nature. A typical awning weighs approximately 13kg and will not bend the product if set up and fitted correctly. Please ensure your awning is set up so it does not collect water and secured down with guy ropes as per manufacturers instructions.
- This warranty does not apply to damage due to accident, misuse, abuse, misapplication, collision, modification, improper installation or improper maintenance.

For change of mind purchases, the product must be returned in full within 30 days of the shipment date. A partial refund will be issued (minus any merchant, postage and packaging costs) with return postage being the purchasers responsibility.