

Twin Camera Plate 300

Specification

Length	317mm (12 1/2")
Width	51mm (2")
Height	20mm (0.8")
Weight	500g (18oz)

Operating Instructions

Thank you very much for choosing SLIK Twin Camera Plate 300. The SLIK Corporation has designed your pan head to be a sturdy, rugged, dependable product that will provide you with many years of satisfactory use.

Please take a few moments to read these operating instructions carefully before use so that you can take full advantage of your pan head's many fine features. Retain this operating instruction sheet in case you might want to refer back to it.

⚠ Caution

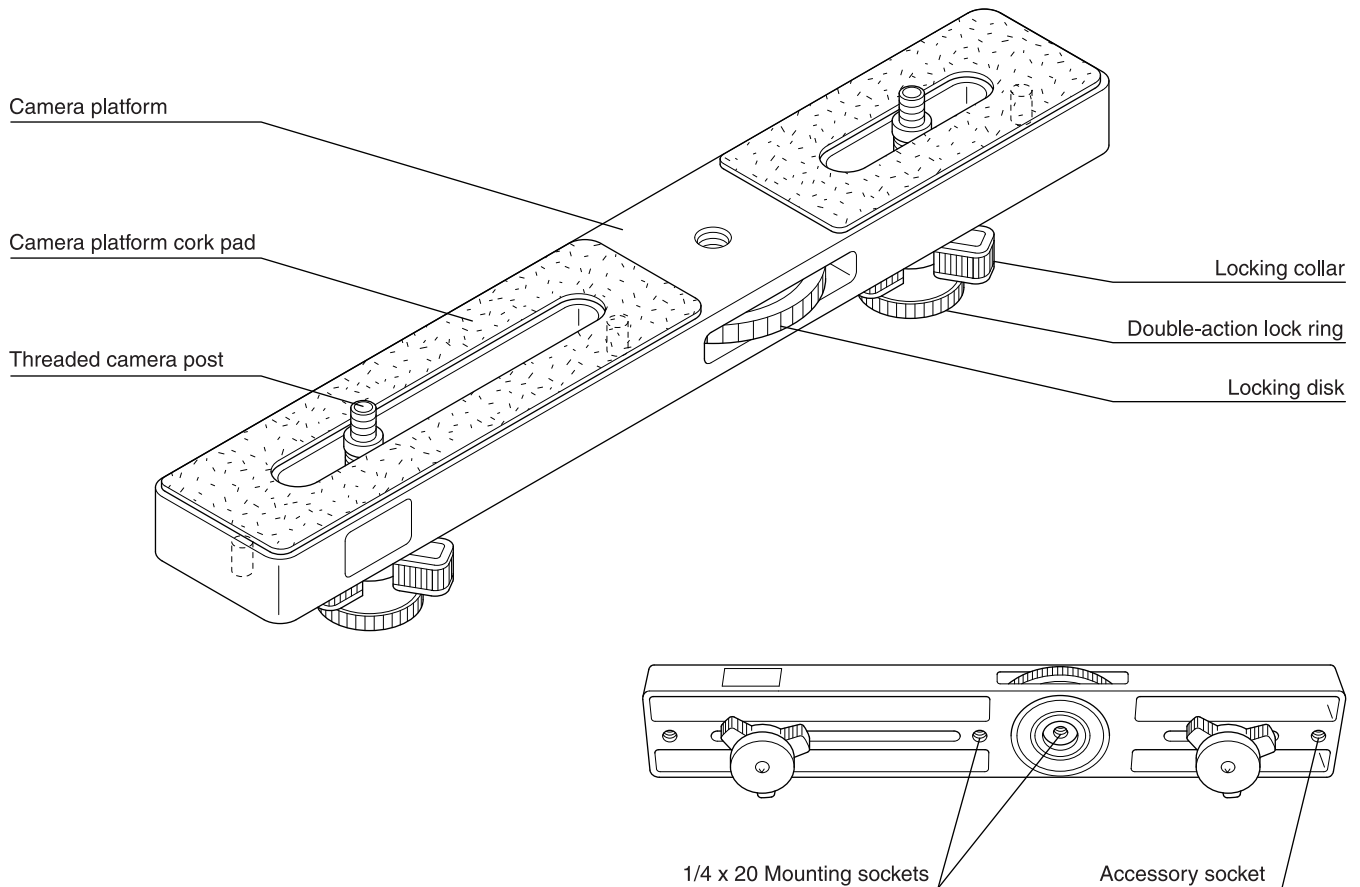
This caution icon refers to information pertaining to important safety procedures in preventing injuries, or damages which may occur as a result of mishandling this product.

🚫 Prohibition

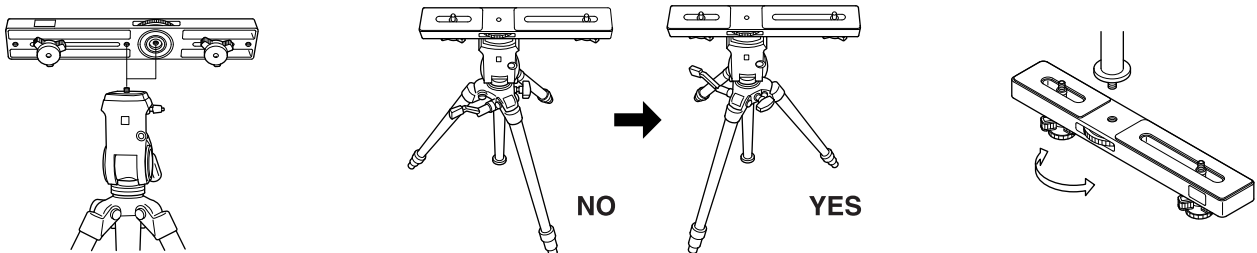
This prohibited icon refers to information pertaining to prohibited contents. Please refer to instructions closely to avoid accidents.

6287-1

Components



Mounting the Twin Camera Plate 300 to the tripod

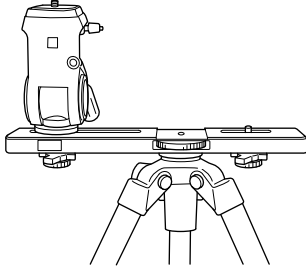


Note that there are two mounting sockets (indicated by the dotted lines) for mounting the Twin Camera Plate 300 on the tripod. Use the mounting socket that provides the best balance for the different weights of your cameras.

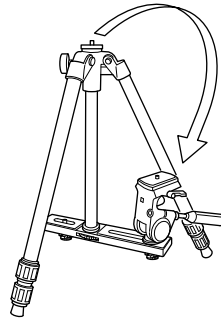
Also note, after mounting, one side of the platform extends further out from the pan head. It is important, therefore, to position one tripod leg directly underneath the longer side of the platform, in order for that particular leg to support the weight of the camera on the platform.

The Twin Camera Plate 300 can be mounted on the bottom of the center column using the mounting socket.

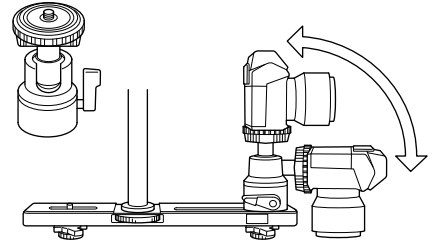
Mounting the tripod pan head to the platform



The Twin Camera Plate 300 can be mounted directly on to the threaded post at the top of the center column, and the pan head from the tripod can then be mounted on to the camera platform.

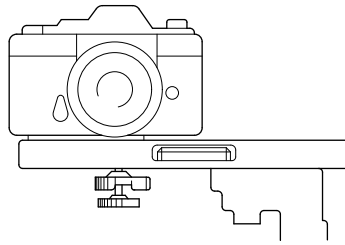


The Twin Camera Plate 300, with the pan head mounted to it, can also be mounted on the bottom of the center column.

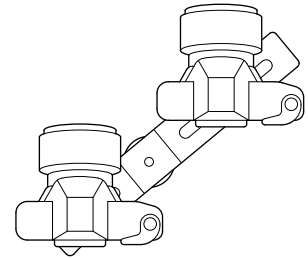


For greater flexibility, a ball head can be mounted on the Twin Camera Plate 300 and the camera mounted to the ball head.

Mounting your camera



1. Place camera body on the Twin Camera Plate 300 so that the tripod socket aligns with the Threaded camera post.
2. Turn the lower knurled lock ring of the Double-Action lock ring counterclockwise until it stops. **DO NOT USE ANY FORCE.** Then turn clockwise 1/4 turn.
3. Turn the upper positive locking collar to the Double-Action lock ring to secure the pan head. **MAKE SURE CAMERA IS LOCKED FIRMLY INTO POSITION.**



The Twin Camera Plate 300 is designed to be used with two cameras mounted side by side. It is recommended, however, that when you are using two larger size cameras that you mount them as illustrated above.

Memo

Care of the Tripod

- DO NOT apply any grease or oil to this product.
- Clean with a mild detergent and a soft cloth only.
- DO NOT use close to flame. Avoid extreme heat.



SLIK Corporation reserves the right to make changes in design and/or improvements on the products without any obligation and advanced notice.

SLIK CORPORATION

853 Kayama, Hidaka City, Saitama 350-1231 Japan Phone 81-42-989-2141, Fax. 81-42-985-0210 ©2007

Printed in Thailand