



	<b>18 KT alloys</b> (ca. 15,3g/cm <sup>3</sup> )	<b>14 KT alloys</b> (ca.13g/cm <sup>3</sup> )	<b>Silver alloys</b> (ca. 10,5g/cm <sup>3</sup> )
30mm sheet	110 Gramm	90 Gramm	75 Gramm
20mm sheet	80 Gramm	65 Gramm	55 Gramm
10mm sheet	40 Gramm	34 Gramm	28 Gramm
8mm round wire	42 Gramm	36 Gramm	29 Gramm
6mm round wire	23 Gramm	19 Gramm	15 Gramm

**We recommend casting with additional material - at least 10 grams for gold alloys and 5 grams for silver alloys. Any impurities usually float on the melt and do not get into the required piece of sheet metal/wire during casting, but settle on the excess part of the material ("casting king/casting head"), also it compensates shrinkage and avoid cavitation.  
Coat the cylinder halves with silicone spray or bor-nidrid-spray to prevent sticking!**



	<b>18 KT alloys</b> (ca. 15,3g/cm <sup>3</sup> )	<b>14 KT alloys</b> (ca.13g/cm <sup>3</sup> )	<b>Silver alloys</b> (ca. 10,5g/cm <sup>3</sup> )
30mm sheet	110 Gramm	90 Gramm	75 Gramm
20mm sheet	80 Gramm	65 Gramm	55 Gramm
10mm sheet	40 Gramm	34 Gramm	28 Gramm
8mm round wire	42 Gramm	36 Gramm	29 Gramm
6mm round wire	23 Gramm	19 Gramm	15 Gramm

**We recommend casting with additional material - at least 10 grams for gold alloys and 5 grams for silver alloys. Any impurities usually float on the melt and do not get into the required piece of sheet metal/wire during casting, but settle on the excess part of the material ("casting king/casting head"), also it compensates shrinkage and avoid cavitation.  
Coat the cylinder halves with silicone spray or bor-nidrid-spray to prevent sticking!**

# KC - INGOT MOLD

READY FOR THE REVOLUTION ?



# KC-MOLD

THE **NEW** INNOVATIVE INGOT MOLD  
WITH A 21ST CENTURY ENGINEERED SPRUE  
AND MOLD CAVITY FOR BETTER QUALITY  
INGOTS AND FASTER PRODUCTION OF WIRE  
AND SHEET METAL.



**KOCH CHRISTIAN**

AUSTRIAN CERTIFIED MASTER GOLDSMITH



PHONE: +43664/5083920

MAIL: [KONTAKT@EDELSTEINFASSER.AT](mailto:KONTAKT@EDELSTEINFASSER.AT)

WEB: [WWW.EDELSTEINFASSER.AT](http://WWW.EDELSTEINFASSER.AT)



# THE PRODUCT

THE KC-MOLD IS A 21ST CENTURY PRODUCT. DESIGNED BY AN AUSTRIAN MASTER JEWELER AND ENGINEERED TO THE HIGHEST STANDARDS. THE SPRUE IS A THOROUGHLY TESTED DESIGN THAT OPTIMIZES METAL FLOW INTO THE MOLD CAVITY. THE MOLD IS COMPOSED OF TWO STAINLESS STEEL HALVES AND ONE PRECISION MACHINED ALIGNMENT CYLINDER. IN THE ALIGNMENT CYLINDER ARE 2 RUBBER O-RINGS THAT PRESS THE TWO CYLINDER HALVES AGAINST EACH OTHER PERFECTLY.



CNC-MACHINED IN AUSTRIA.  
MADE OUT OF HIGH QUALITY  
STAINLESS STEEL.

# ADVANTAGES

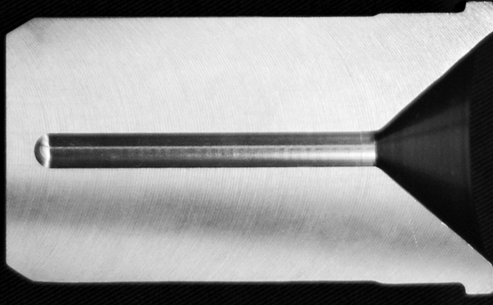
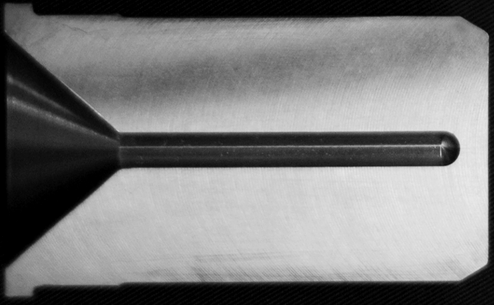
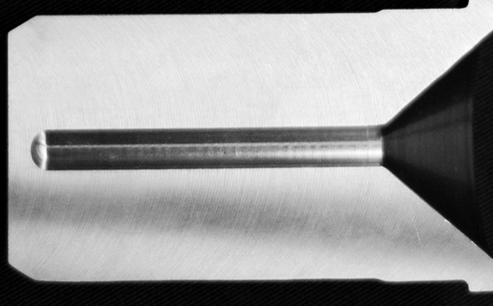
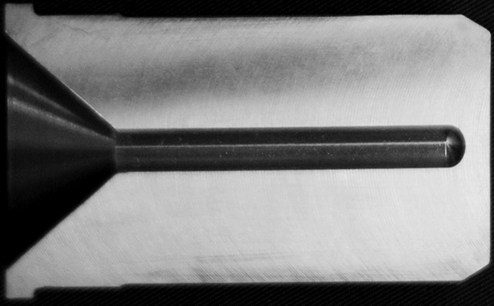
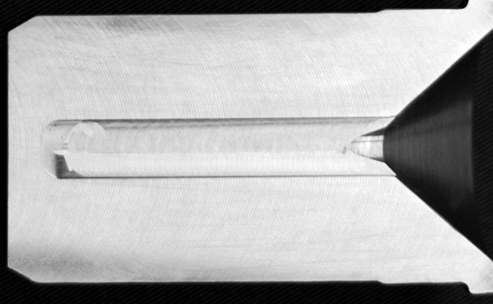
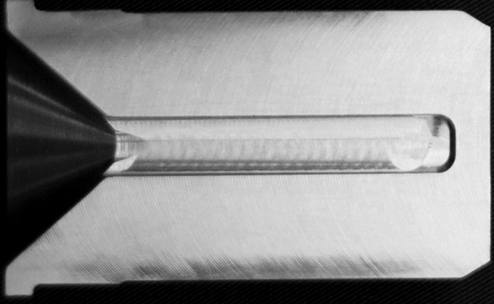
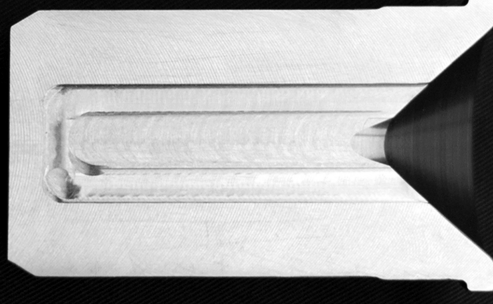
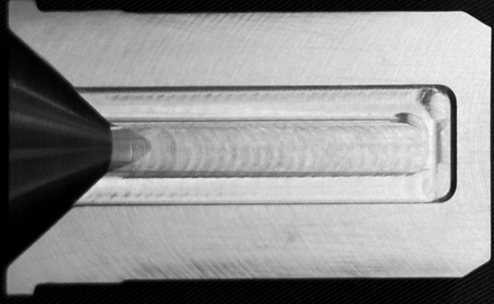
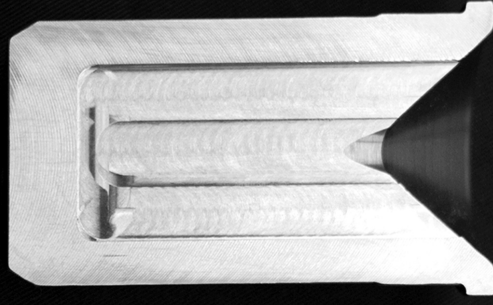
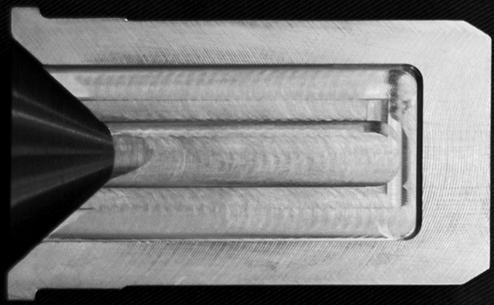
- BIG SPRUE GATE (Ø 4CM)
- NO SPILL OR OVERFLOW
- EASY TO OPEN/CLOSE
- SOLID AND ROBUST
- NO SCREWS OR CLAMPS FOR PERFECT ALIGNMENT
- THE MELT SOLIDIFIES FASTER  
DUE TO THE MASSIVE DESIGN
- ROUNDED EDGES ON THE INGOTS

THE UNIQUE FEATURE AND THE GREATEST ADVANTAGE IS THE COMPATIBILITY WITH (ALMOST) ALL CASTING SYSTEMS:

DUE THE CYLINDRICAL SHAPE, IT IS VERY EASY TO INSERT THE MOLD IN YOUR CASTING MACHINE. IT OPENS UP NEW POSSIBILITIES TO OPTIMIZE YOUR WORK PROCESS AND IMPROVE THE QUALITY OF THE WIRE AND SHEET METAL YOU PRODUCE. SAVE MONEY BY REDUCING THE LARGEST COST FACTOR: YOUR TIME

THE ADVANTAGES ARE CLEAR:

- RAPID MELTING BY INDUCTION, ETC.
- CONTROL OF THE TEMPERATURE OF THE MELT
- MELTING UNDER A PROTECTIVE ATMOSPHERE
  - NO OXIDATIONS AND HIGHER QUALITY INGOTS
  - MAKE BETTER WIRE AND SHEET METAL FASTER
- ENORMOUS TIME SAVINGS
  - TIME IS MONEY





# KC - INGOT MOLD

READY FOR THE REVOLUTION ?





# KC-MOLD

THE **NEW** INNOVATIVE INGOT MOLD  
WITH A 21ST CENTURY ENGINEERED SPRUE  
AND MOLD CAVITY FOR BETTER QUALITY  
INGOTS AND FASTER PRODUCTION OF WIRE  
AND SHEET METAL.



**KOCH CHRISTIAN**

AUSTRIAN CERTIFIED MASTER GOLDSMITH



PHONE: +43664/5083920

MAIL: [KONTAKT@EDELSTEINFASSER.AT](mailto:KONTAKT@EDELSTEINFASSER.AT)

WEB: [WWW.EDELSTEINFASSER.AT](http://WWW.EDELSTEINFASSER.AT)

# THE PRODUCT

THE KC-MOLD IS A 21ST CENTURY PRODUCT. DESIGNED BY AN AUSTRIAN MASTER JEWELER AND ENGINEERED TO THE HIGHEST STANDARDS. THE SPRUE IS A THOROUGHLY TESTED DESIGN THAT OPTIMIZES METAL FLOW INTO THE MOLD CAVITY. THE MOLD IS COMPOSED OF TWO STAINLESS STEEL HALVES AND ONE PRECISION MACHINED ALIGNMENT CYLINDER. IN THE ALIGNMENT CYLINDER ARE 2 RUBBER O-RINGS THAT PRESS THE TWO CYLINDER HALVES AGAINST EACH OTHER PERFECTLY.



CNC-MACHINED IN AUSTRIA.  
MADE OUT OF HIGH QUALITY  
STAINLESS STEEL.

# ADVANTAGES

- BIG SPRUE GATE (Ø 4CM)
- NO SPILL OR OVERFLOW
- EASY TO OPEN/CLOSE
- SOLID AND ROBUST
- NO SCREWS OR CLAMPS FOR PERFECT ALIGNMENT
- THE MELT SOLIDIFIES FASTER  
DUE TO THE MASSIVE DESIGN
- ROUNDED EDGES ON THE INGOTS

THE UNIQUE FEATURE AND THE GREATEST ADVANTAGE IS THE COMPATIBILITY WITH (ALMOST) ALL CASTING SYSTEMS:

DUE THE CYLINDRICAL SHAPE, IT IS VERY EASY TO INSERT THE MOLD IN YOUR CASTING MACHINE. IT OPENS UP NEW POSSIBILITIES TO OPTIMIZE YOUR WORK PROCESS AND IMPROVE THE QUALITY OF THE WIRE AND SHEET METAL YOU PRODUCE. SAVE MONEY BY REDUCING THE LARGEST COST FACTOR: YOUR TIME

THE ADVANTAGES ARE CLEAR:

- RAPID MELTING BY INDUCTION, ETC.
- CONTROL OF THE TEMPERATURE OF THE MELT
- MELTING UNDER A PROTECTIVE ATMOSPHERE
  - NO OXIDATIONS AND HIGHER QUALITY INGOTS
  - MAKE BETTER WIRE AND SHEET METAL FASTER
- ENORMOUS TIME SAVINGS
  - TIME IS MONEY



