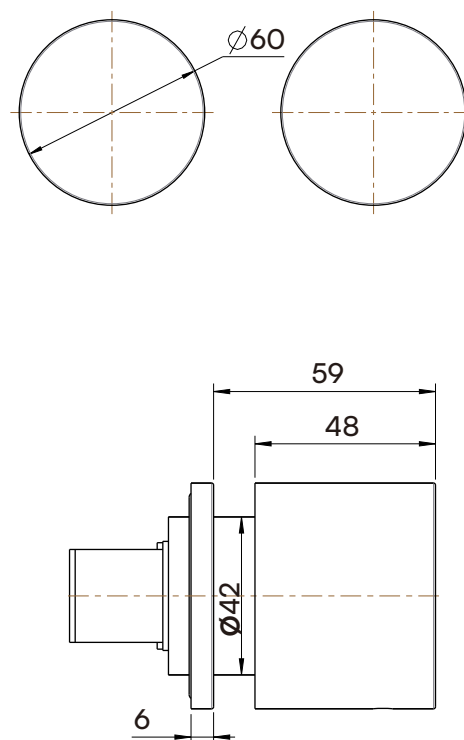
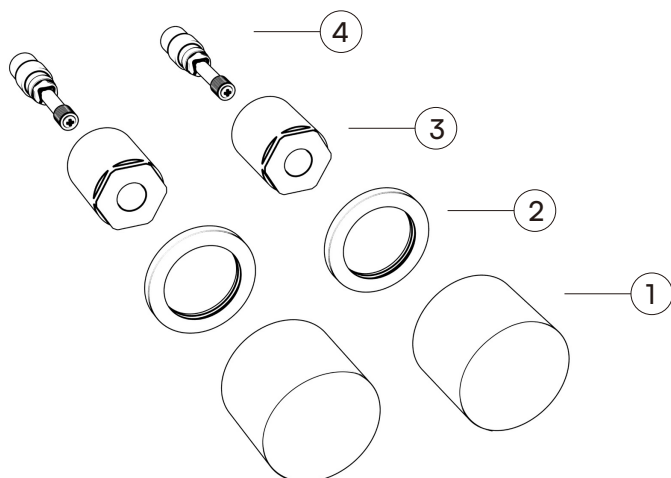


PERSPECTIVE VIEW

Construction	Stainless Steel
WaterMark Certified	Yes
Max. Pressure	1000 kPa
Cartridge	35mm European ceramic cartridge
Fitting size	Standard size (1/2 inch thread)

EXPLODED VIEW

1. Handle x 2
2. Backplate x 2
3. Fixing nut x 2
4. Spindle

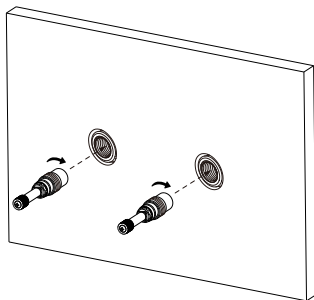


INSTALLATION GUIDE

Round Wall Taps

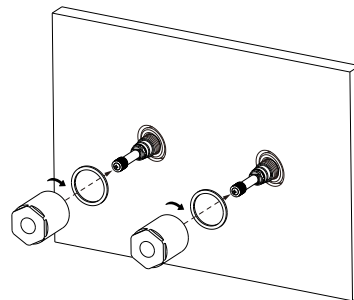
1

Screw spindle into breach and hand tighten until rear of spindle meets the body seat, be sure not to over tighten.



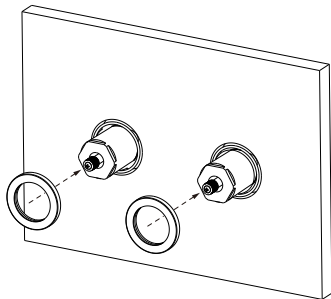
2

Fit the fibre washer over the spindle. Screw on the fixing nut.



3

Slide the back plate over the fixing nut.



4

Install tap handle onto spindle and tighten in place using grub screw and allen key.

