



### Wearing the LuLuwrap Bohemian Style

The Bohemian style has an easy, carefree and avant-garde look.

Unbutton the first 2 buttons, step in and then button up to where it feels most comfortable. Depending on your body type, thin women can usually button all the buttons and for those of us who are not as thin as we used to be, just button the middle button and tuck in the top button and loop. You can always play around and attach the second button loop to the first button and wear the LuLuwrap open over leggings, jeans or slacks.

I love wearing this style over a silk cami dress. It looks great layered over skinnies - long, mid-calf, or knee length. Add a belt. Throw on a sweater.

### Wearing the LuLuwrap Rebel Style

Dare to play!

Wrap your trendiest belt around the LuLuwrap, buttons to the side (like Entrepreneur style). It looks very boho chic worn over a long skirt, or pants with boots, just pile on the jewelry . . . more, more, more!



### Wearing the LuLuwrap Entrepreneur Style

The Entrepreneur style is one of the most popular ways to wear the LuLuwrap.

Make sure the buttons are attached and put the LuLuwrap over your head, with the buttons following the line from the collarbone toward the underarm. This creates a fashionable poncho and a lean silhouette

This style looks great layered over a cami and legging or even a sweater and jeans with a pair of boots for an autumn outing. It always looks stunning!



### Wearing the LuLuwrap Sophisticate Style

The Sophisticate style is a stunning and elegant way to wear the LuLuwrap

Put the LuLuwrap on buttoned and turn it around so the buttons are centered going down the back. The front will be shorter which looks great worn over a chic sheath dress and the LuLuwrap will flow behind you as you move along.

This style adds just the right amount of classic chic to finish off your ensemble.



### Wearing the Luluwrap Artist Style

The Artist style is a shawl with flair!

When you want to cocoon yourself in luxury all you have to do is unbutton the Luluwrap and drape it around your shoulders. Just flip one end over your shoulder and voila! Be playful and creative! There are so many ways to have fun wearing the Luluwrap.

I throw the Luluwrap in my bag so I have it whenever I need it. It's the perfect accessory to have on hand when traveling on an airplane or sitting in an air-conditioned theater or restaurant.



### Wearing the LuLuwrap Ingenue style

Here's a great way to add some color as well as a bit of vintage Fred Astaire flair.

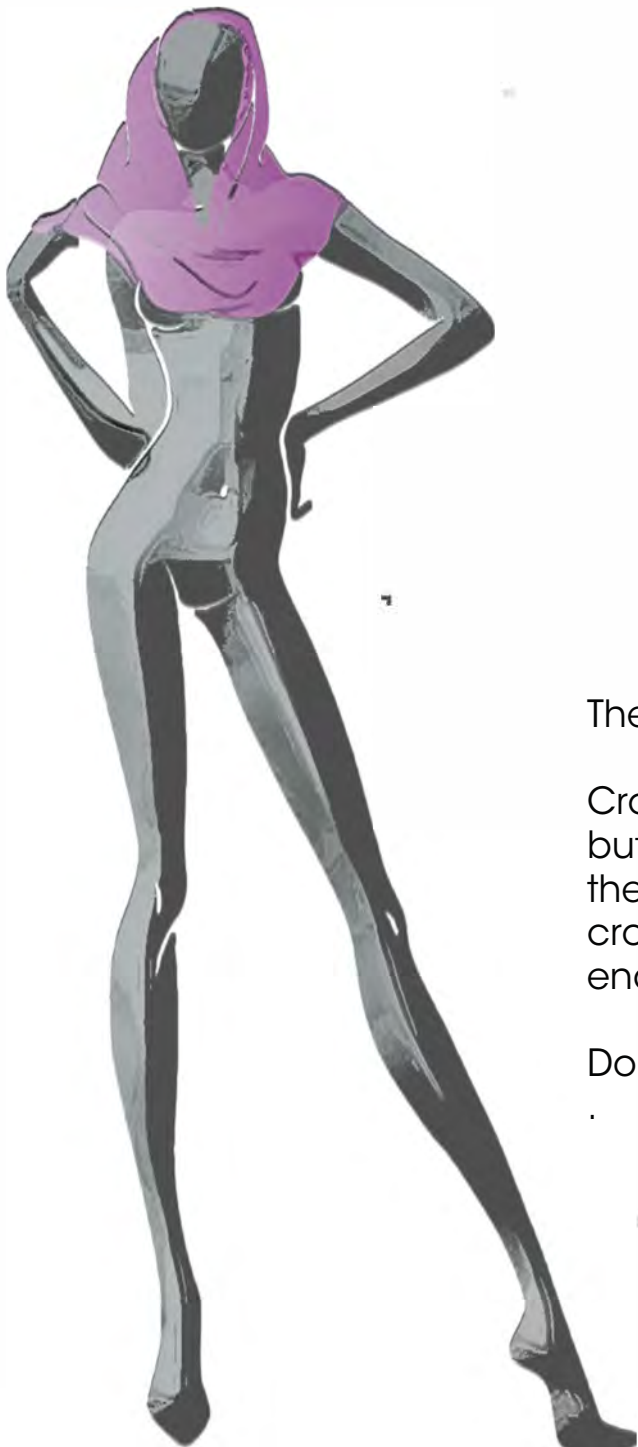
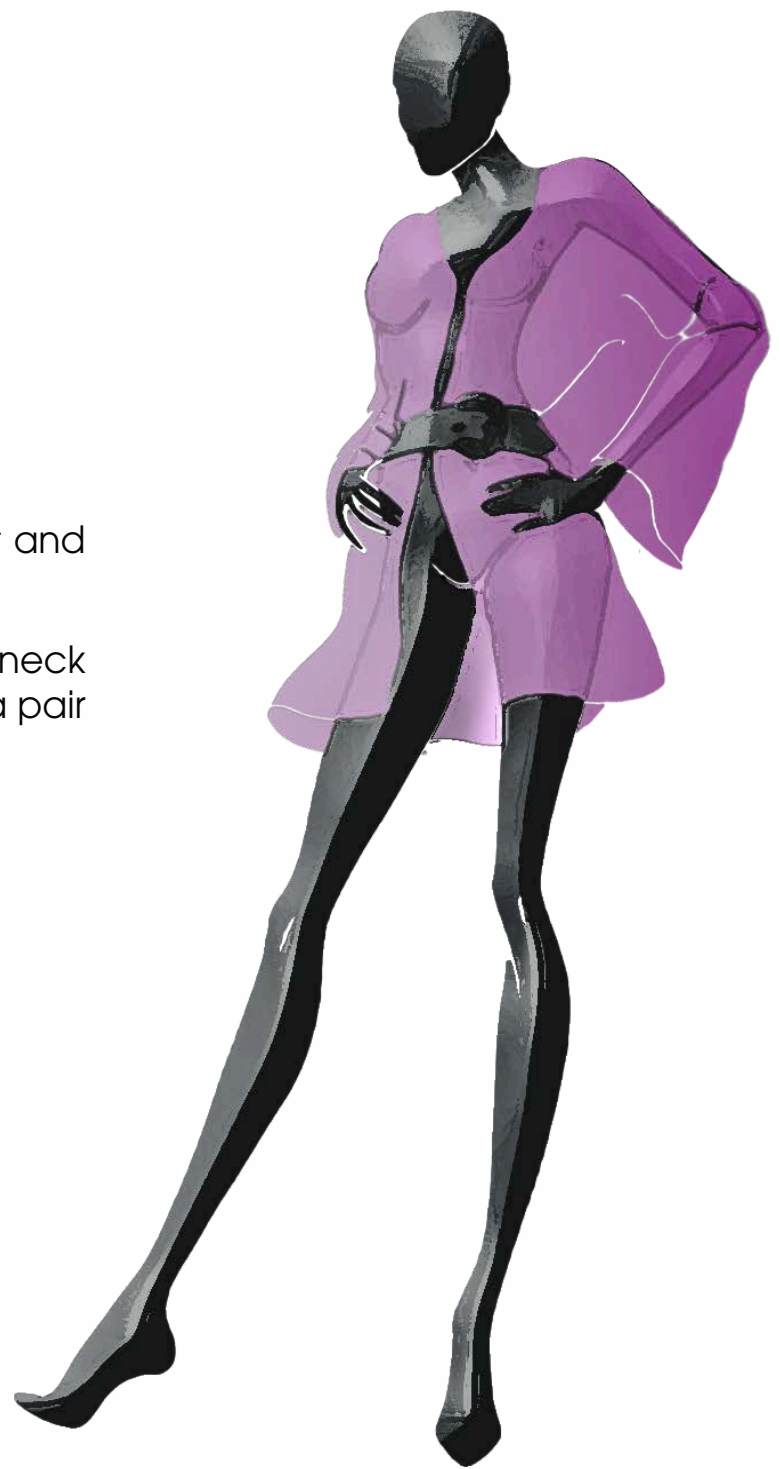
Gather the LuLuwrap lengthwise. Wear it as a belt through your jean belt loops or around your waist over a dress or skirt.

### Wear the LuLuwrap Jet Setter style

Arrive fashionable and trendy.

Style The LuLuwrap with buttons down the front and add a fabulous belt. So chic.

Jet-Setter style looks great worn over a turtleneck and leggings or jeans. Finish your outfit off with a pair of boots and a trendy belt.



### .Wearing the Luluwrap Diva Style

The Diva style harkens back to 50's movie star glam.

Crown your beauty with the Luluwrap. Just put the buttoned Luluwrap around your head making sure the buttons are placed in front. Take each end and cross them over each other and then simply toss the ends over your shoulders.

Don't forget your sunglasses!



### Wearing the LuLuwrap Poet Style

Wear it Poet style under a coat or jacket to protect you from the cold and then when you're inside let it flow.

Slip The LuLuwrap over your head, flip the ends over your shoulders or tie them together. Don't be afraid to experiment! There are at least 25 ways to wear a scarf!

### Wearing the LuLuwrap Enchantress Style

The Enchantress style is a gracefully, flowing over-blouse or topper that can be worn with just about any outfit you put together.

All you have to do is put the LuLuwrap around your shoulders and button up making sure that the buttons are lined up down the front of the body. I like to keep it buttoned and just throw it over my head!

Pair the LuLuwrap with a dress or a skirt and cami and it's instant sophistication!

You can always unbutton the top button for a wider neckline. Try tying the ends together for a flirty, playful look.



## Wearing the Luluwrap Innovator Style

This is a great look to wear over a skirt.

Wrap the LuLuwrap around you and button up so the buttons are in placed in front.

Take the two ends, cross them over and secure in front. (Leave enough room so you can move your arms )Then wrap the ends around your waist and tie them together in the back . . . make a pretty bow.



## Wearing the LuLuwrap Goddess Style

Ahh, the Goddess style will turn heads every time!

Open the top button, slip the LuLuwrap over your head and put one arm thru. The buttons will fall along the side of your body under your arm. Button up or leave it, whatever feels comfortable. You have just created an off the shoulder style tunic or dress.

It looks so sexy worn with palazzo pants and a cami or midi top! I love to wear it over a silk slip as a summer dress or try wearing it over a pair of bike shorts.

Remember to add a pair of Louboutin's and strut on out.