

Below is a simple set of instructions to help you layout your basketball court stencil kit.

Following are the steps we suggest when using the stencil ease.com Highschool regulation basketball court stencil kit:

1) First, measure 6 feet from the center of the hoop to the left and the right and drop a chalk or a plumb line as a guide. Then, measure 48" behind the backboard, beginning from the frontside of the backboard (See Highschool Specs) and drop another chalk or plumb line.

2) Remove the pieces from the box and gather sections 1 through 18 for the rectangular portion of the key.



3) Using the chalk guides you marked out in step 1, place sections 1, 2, 3 etc., together. The outside edge of the 2" line should be aligned to the 6 foot mark on either side. Tape the seams of the pieces with painters tape (shown left).

Once you have followed the numbered illustration and have sections 1 through 15 together, verify that these are 12 feet apart (measuring from the outside of the 2" court line on sheet #1 to the outside of the 2" court line on sheet #15). *TIP: You can use the post supporting your backboard/hoop as a center guide as this should be 6-feet from your stencil sheet #1 and sheet #15.*



4) Next you can add sheets 19 through 22 for the top of the key and tape those together with painter's tape.

5) Now you can begin painting all sections you have laid out. For spray

painting techniques and tips, please refer to stencil ease.com videos for various applications.

TIP: If you are using spray paints or landscape chalk spray, we highly suggest using the cardboard box provided as a "spray box" to eliminate overspray. If you plan on using a spray tip with a liquid paint, please refer to your spray equipment instructions for creating an optimum 2" line.



6) Before you remove any sections that have just been painted, be sure to find register marks on sheets 3, 4, 5, 6 and 10, 11, 12,

13. This way you can accurately place the free throw tabs and free throw block (the marking where players NOT shooting stand during a free throw). You can slip these pieces under the previously painted sections to



line them up with the register marks before painting or mark where the tabs will go with chalk BEFORE moving sections 3-6 and 10-13.

7) After steps 1-5 have been followed, your basic free throw key and tabs should be finished and you can then add the 3-point line if you choose.



STENCILING THE 3-POINT LINE ON YOUR BASKETBALL COURT

8) Since this particular basketball court stencil kit is designed to meet highschool regulation sizing for the key and the 3-point line, you will need to be sure you have close to 45-50-feet of space available. A regulation basketball court is 50-feet wide.



You will need some room for players to stand behind the 3-point line at the side of the court to shoot from (see Highschool specs)

9) Now you can start laying out sections 31-42. See the illustration so you start at the top of the radius (previously painted) and so sections 31 and 40 are overlapping your previously painted area. Tape all seams together, take a final measurement from several areas (your Highschool 3-point line should have a 19 ft. 9 in. radius around all sides) and begin painting.

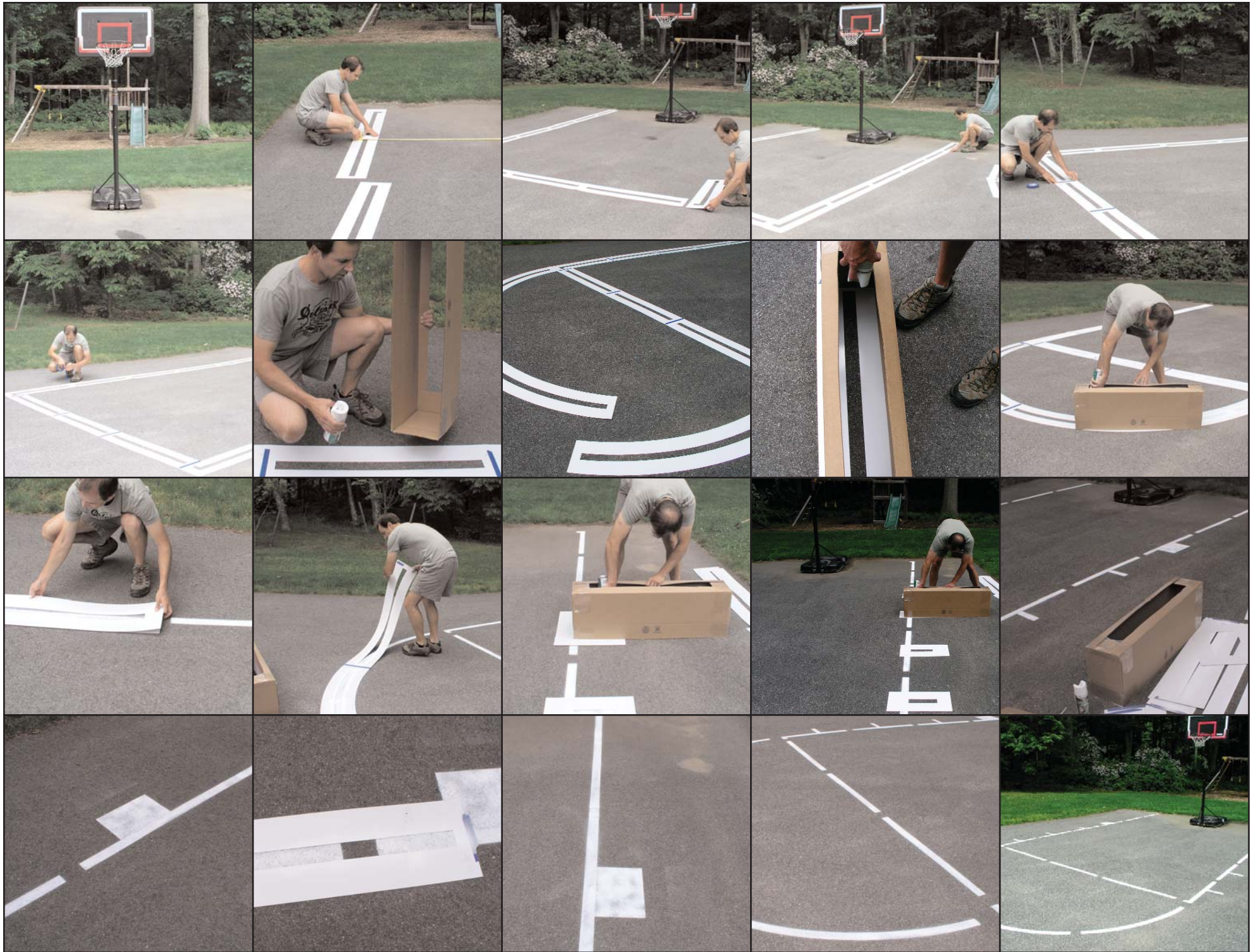
10) If you wish to have a solid line for the key and three-point lines, you can simply use one of the straight pieces, lay it down so it is covering the "break" or unpainted area and spray each of these to fill in your gaps.

For more detailed information on court measurements, please refer to the illustrations provided or consult the volume of information online.

Your Stencil Ease basket ball court stencil can be cleaned, stored and reused many times. This material is super durable and requires little maintenance.

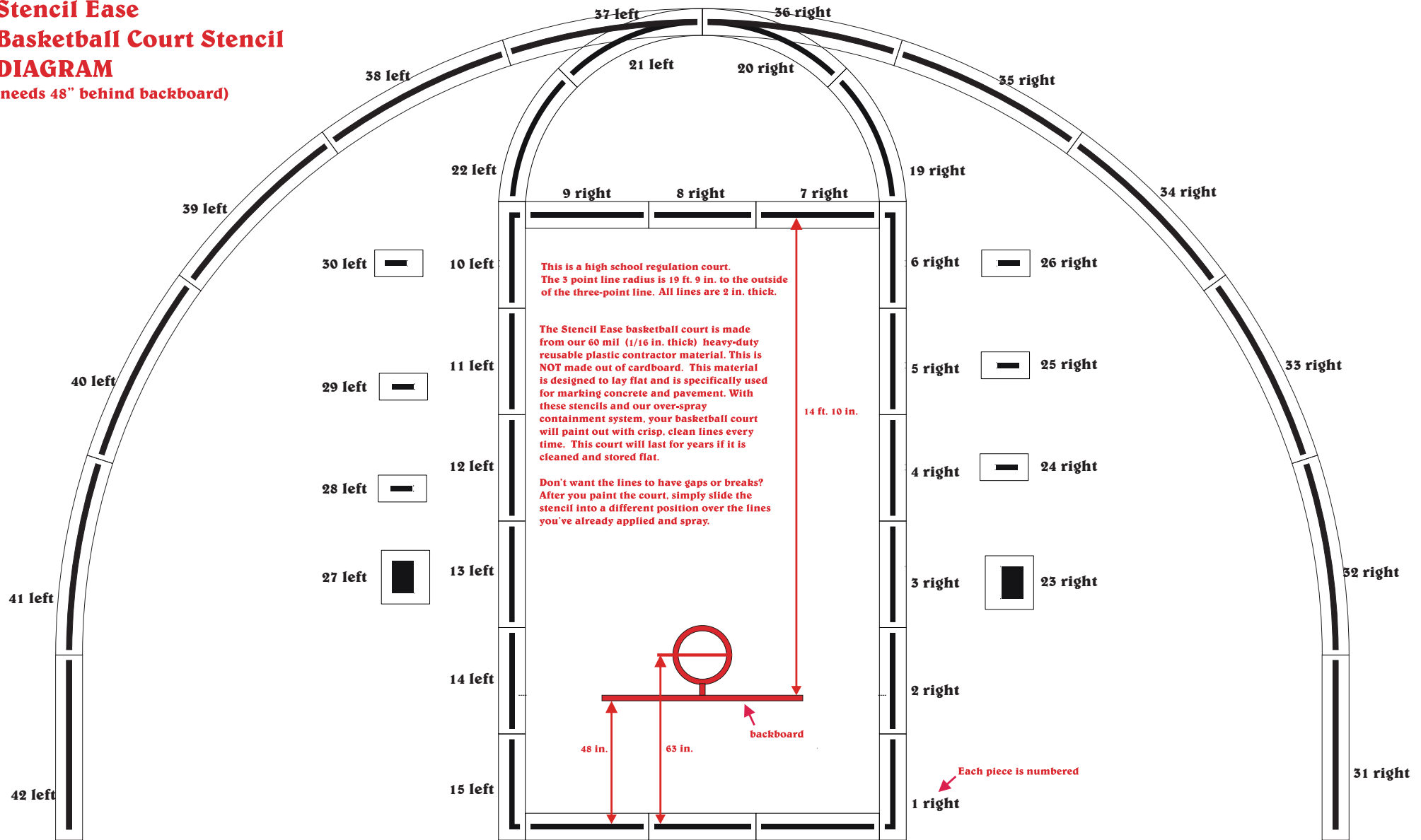
Stencil Ease
.com

Stencil Ease, P.O. Box 1127,
Old Saybrook, CT 06475
Toll Free (800) 334-1776
Phone (860) 395-0150 • FAX (860) 395-0166
Visit our web site at: www.stencil ease.com



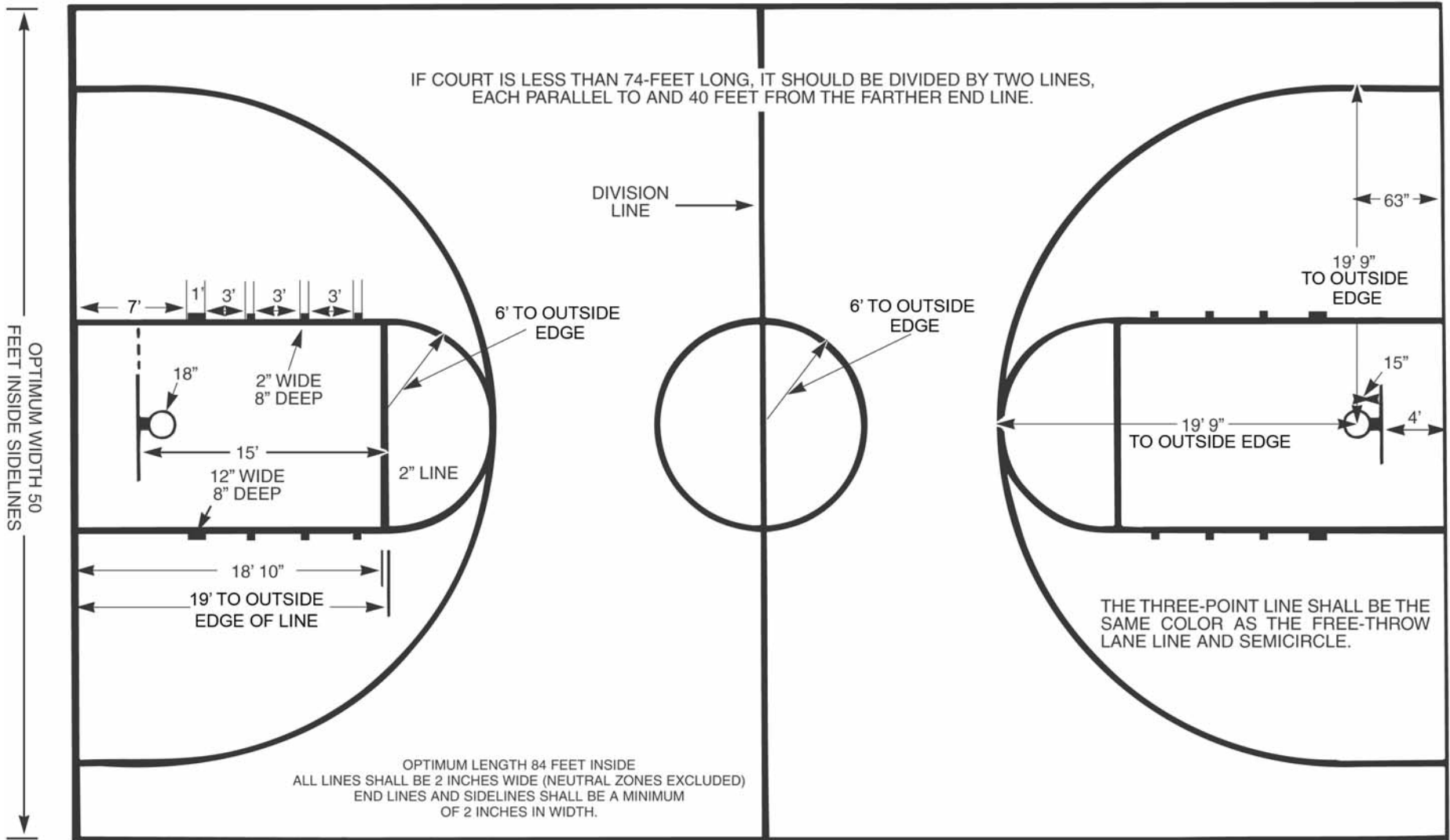
Stencil Ease Basketball Court Stencil DIAGRAM

(needs 48" behind backboard)



BASKETBALL COURT DIAGRAM

(See Rule 1-13 for location and size of optional coaching box)



Left End Shows
Rectangular Backboard
72-Inches Wide

MINIMUM OF 3 FEET
Preferably 10 feet of unobstructed space outside. If impossible to provide 3 feet, a narrow broken 1-inch line should be marked inside the court parallel with and 3 feet inside the boundary.

Right End Shows
Fan Backboard
54-Inches Wide