



# WW Chair

Designed by Herve



The WW Chair is designed by Alejandro Villarreal (Herve). The origins of the chair and its name refer to Windsor and Wire, which reference the form and materials. Inspired by the classic lines of the Windsor chair, its main features are the structured wire backrest and solid wood seat. It is a hybrid piece; offering a contemporary twist on a traditional design.

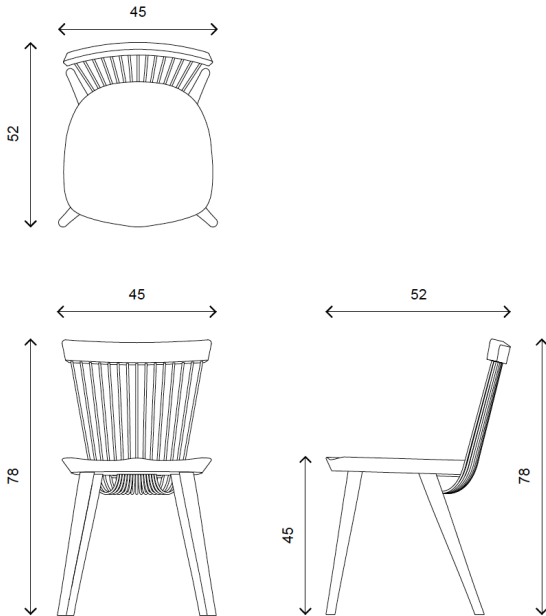
The WW Chair is available in walnut, solid oak with a natural or black finish, and with either black, red or white wire.



Above and right – wood: oak natural

# Technical Information

---



---

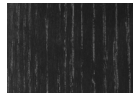
## Finishes



Oak Natural



Walnut



Black Oak

## Dimensions (cm)

H: 78cm; W: 45cm; D: 52cm

Seat height: 45cm

## Weight

5.5 kg

## Shipping

2 chairs per box

---

## Notes

Stackable option NOT available.

Available in custom made selection of colour of metal wires, fabrics and leathers.

\*All bespoke orders may be subject to a minimum order quantities and/or surcharges; please contact us for more information.

# Contact

---

Call	+44 2073 057 382
Enquiries	hello@hayche.com
Sales	sales@hayche.com
Visit	www.hayche.com
Social	@hayche

HAYCHE (H Furniture Limited) is registered at Treviot House, 186 - 192 High Road, Ilford, Essex. IG1 1LR, United Kingdom. Company registration number: 8439199

Photography: Peter Guenzel & Reinis Hofmanis  
Copyright © 2017 HAYCHE (H Furniture Ltd.)

09052018