



Collection 2018





**We create timeless,
original furniture
through exceptional
craftsmanship
and inspired
collaboration.**

www.hayche.com



We are Hayche

Hayche is a company that creates original and meaningful pieces for discerning clients. London based, but with a global outlook, we embrace contrasts and celebrate differences, bringing together carefully curated and beautifully crafted collections that enrich lives.

Our beliefs.

We believe in creative expression; in progress with purpose; in tradition and innovation; in pieces that stand the test of time. We explore new possibilities and methods; we consider history to forge a better future; and we strive to create imaginative, authentic, beautiful and practical products.

Our culture.

Everything we do, we do with love and care.

The details drive us — from design and materials sourcing, to manufacturing and finishing. For us, quality is paramount and can never be compromised. We want to do things the right way, sustainably and without shirking our responsibilities.

We don't just want to build a business, but to find a balance between culture and commerce. We encourage an open attitude that fosters inventiveness and collaboration and is built on mutual respect and trust. We invest in relationships, making sure that everyone we work with feels valued and truly integral to what we're doing.

Our materials.

We love solid wood and the sense of warmth it brings. But we also enjoy compelling juxtapositions with other premium, natural materials. We choose materials for their beauty, purity, honesty and sustainability.

Our collaborators.

We are curators and editors of design, working with emerging and established international talent from different creative disciplines, to collaborate together in the creation of outstanding furniture. We also have strong relationships with skilled, established suppliers all over the world. They provide a combination of state-of-the-art technology and time-honoured craftsmanship.

Our prices.

We keep our prices reasonable considering the complexity of the manufacturing process. We will always charge a fair price for our products, given the cost of materials and production.

Our service.

We give our customers a personalised and warm service experience. We are here to build relationships, to assist and support them all the way throughout the process. We like to think that we give our customers more than they would expect.

Our legacy.

We aim to have a positive impact in the industry. But more than anything, we want to improve the everyday, bringing imagination and nourishment into people's lives.



Seating

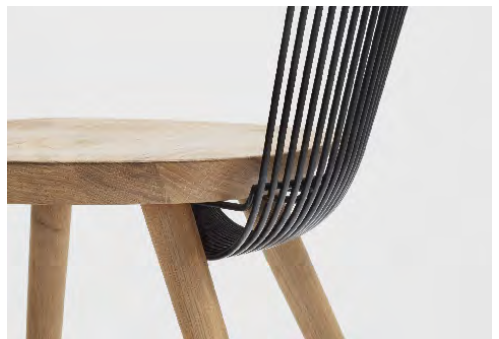
WW Chair

Designed by Alejandro Villarreal



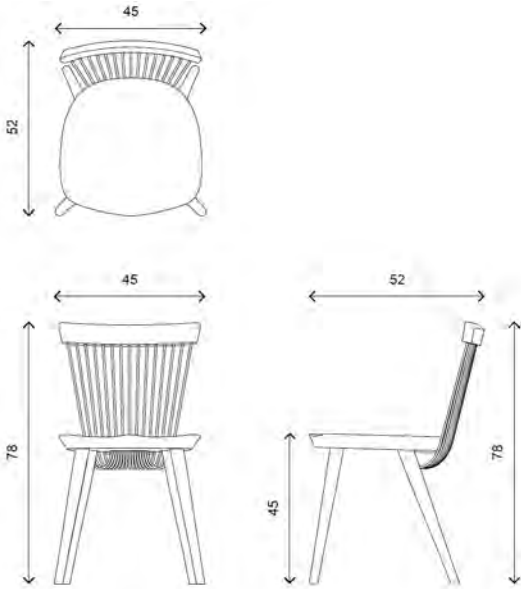
The WW Chair is designed by Herve. The origins of the chair and its name refer to Windsor and Wire, which reference the form and materials. Inspired by the classic lines of the Windsor chair, its main features are the structured wire backrest and solid wood seat. It is a hybrid piece; offering a contemporary twist on a traditional design.

The WW Chair is available in solid oak, walnut or stained oak, with either black, white or red wire.



Above and right – wood: natural oak, black wire.

Technical Information



- Dimensions in cm

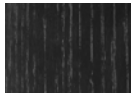
Woods



Oak Natural



Walnut



Black Oak

WW Upholstered Chair

Designed by Alejandro Villarreal



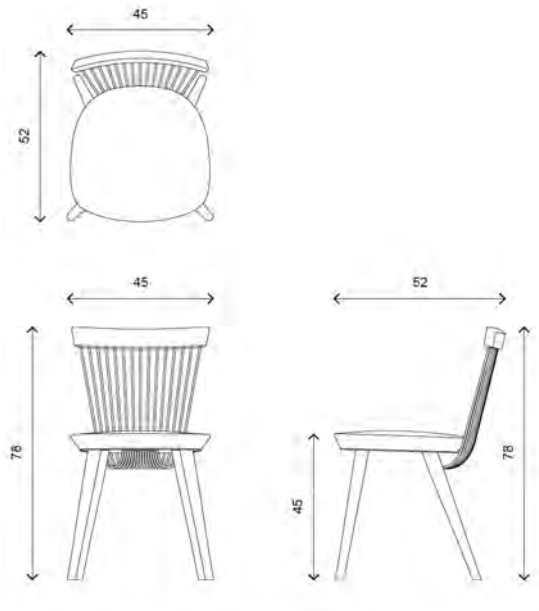
The WW Upholstered Chair is designed by Hierve. Inspired by the classic lines of the Windsor chair, its main features are the structured wire backrest and upholstered seat, providing an alternate, elevated choice from the original WW Chair.

The WW Upholstered Chair is available in a solid oak, walnut or stained wood, with either black, white or red wire. The upholstered seat is available in a choice of soft leathers or fabrics.



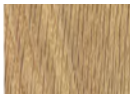
Above and right – wood: stained black, upholstered seat in black fabric.

Technical Information

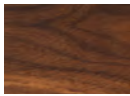


- Dimensions in cm

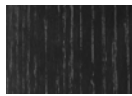
Woods



Oak Natural

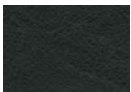


Walnut

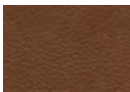


Black Oak

Leather



Nero



Teak

Fabric



Black



Grey

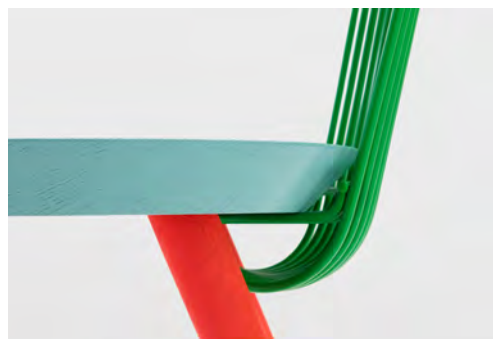
WW Chair Colour Series

Designed by Alejandro Villarreal + Studio Makgill



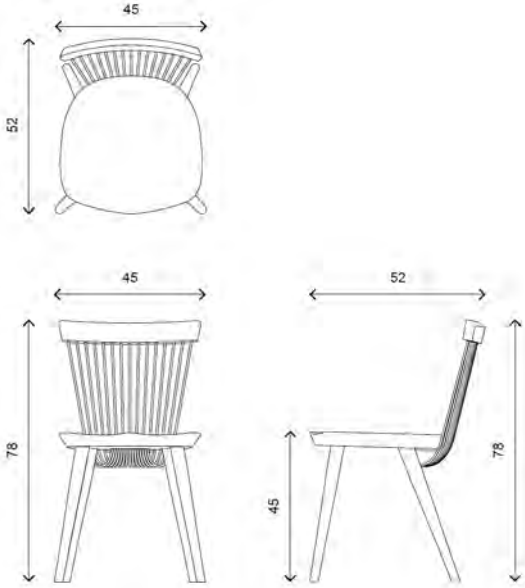
The WW Chair Colour Series has been created in collaboration with Herve and Brighton-based branding agency Studio Makgill. The WW Chair derives its name from Windsor and Wire. The legs and seat are inspired by the classic lines of the Windsor chair and are combined with a structured wire backrest. It demonstrates a bold experimentation with colour, typical of the studio's adventurous creative ethos.

The WW Chair Colour Series is available in a selection of six colourways.



Above - full range of colourways. right - colourway 4

Technical Information



- Dimensions in cm

Colourways

1
↓



2
↓



3
↓



4
↓



5
↓



6
↓





WW Armchair

Designed by Alejandro Villarreal



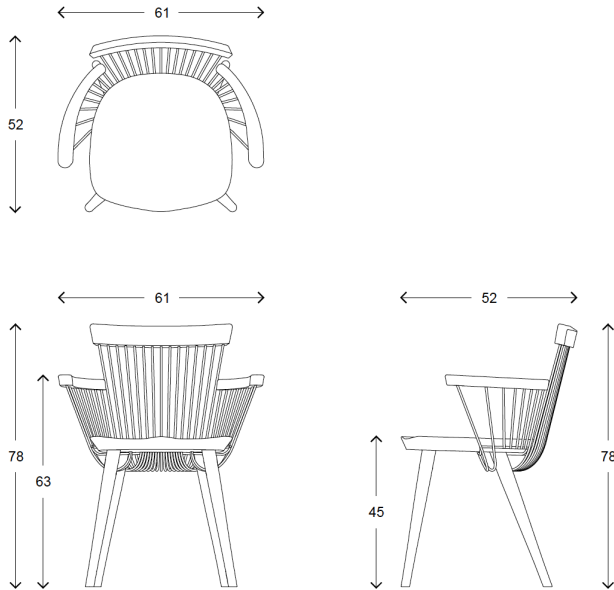
The WW Armchair sits perfectly with the original WW chair, although it offers more presence and comfort. Designed by Alejandro Villarreal, the concept and name refer to Windsor and Wire, which nod to the collection's lines and materials.

Sturdy and robust, yet with an innate sense of lightness, the armrests are a flowing continuation of the back's metal bars, gently wrapping around both sides of the seat. The armchair can serve as a standalone piece or as part of a set of dining table chairs.



Above and right – wood: oak

Technical Information



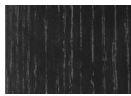
Finishes



Oak Natural

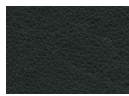


Walnut

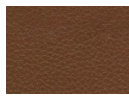


Black Oak

Leather



Nero

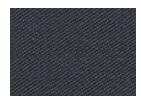


Teak

Fabric



Black



Grey

Dimensions (cm)

H: 78cm; W: 61cm; D: 52cm

Seat height: 45cm

Weight

5.5 kg

Shipping

1 chair per box

Notes

Upholstered version available / Bespoke finishes available.*.

*All bespoke orders may be subject to a minimum order quantities and/or surcharges; please contact us for more information.



WW Armchair Colour

Designed by Alejandro Villarreal

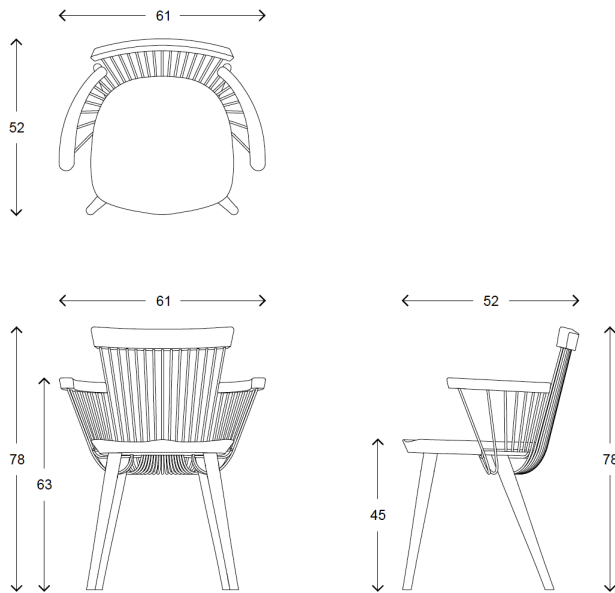


The WW Armchair - Colour Series has been created in collaboration with HAYCHE and Brighton-based branding agency Studio Makgill. It demonstrates a bold experimentation with colour, typical of the studio's adventurous creative ethos and is available in a selection of six colourways. The concept and name refer to Windsor and Wire, which nod to the collection's lines and materials. Sturdy and robust, yet with an innate sense of lightness, the armrests are a flowing continuation of the back's metal bars, gently wrapping around both sides of the seat.

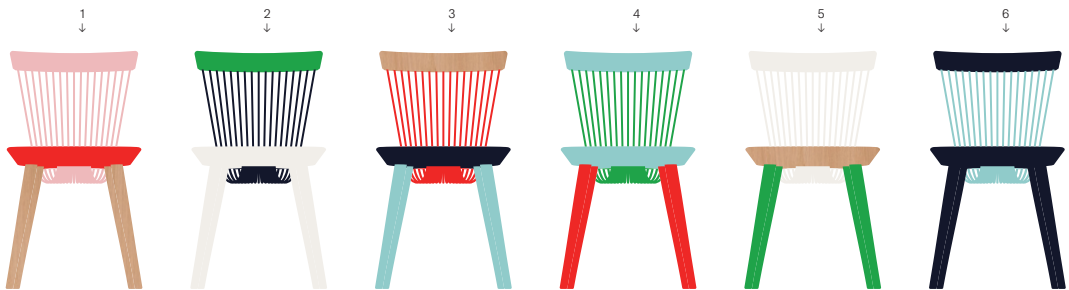


Above and right – Colour Series 3

Technical Information



Colourways



Dimensions (cm)

H: 78cm; W: 61cm; D: 52cm

Seat height: 45cm

Weight

5.5 kg

Shipping

2 chairs per box

Stackable option NOT available.



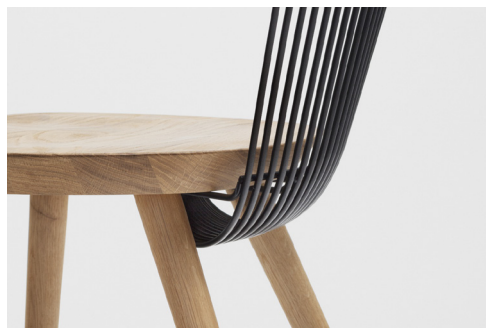
WW Bar Stool

Designed by Alejandro Villarreal



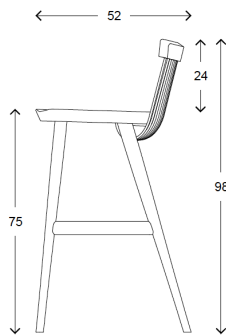
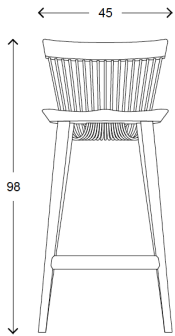
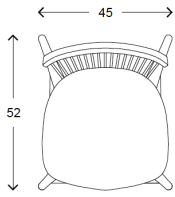
The two Ws in the bar stool's name stand for Windsor and Wire, which allude to its form and materials. It's a hybrid piece, which gives a contemporary twist to a traditional design language. The legs and seat are inspired by the classic lines of a Windsor chair, with the surface of the seat slightly carved for comfort. Shafts of 6mm powder coating metal wire extend upwards from below the seat. They fan slightly outwards from their point of origin before meeting the wooden backrest.

This gives the bar stool a sculptural quality and sense of lightness. The playful juxtaposition of materials is



Above and right – wood: solid oak.

Technical Information



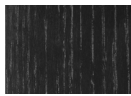
Finishes



Oak Natural

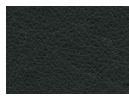


Walnut

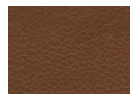


Black Oak

Leather



Nero

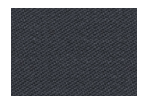


Teak

Fabric



Black



Grey

Dimensions (cm)

H: 98cm; W: 45cm; D: 52cm

Seat height: 75cm

Weight

5.5 kg

Shipping

1 stool per box

Notes

Available in counter height.

Upholstered version available / Bespoke finishes available.*.

*All bespoke orders may be subject to a minimum order quantities and/or surcharges; please contact us for more information.



WW Bar Stool Colour

Designed by Alejandro Villarreal



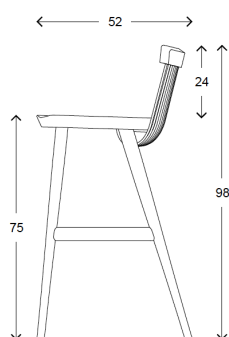
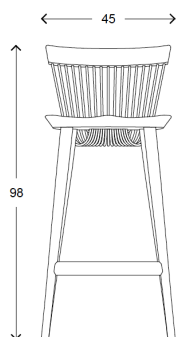
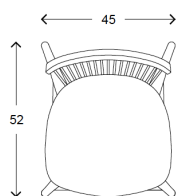
The WW Bar Stool - Colour Series has been created in collaboration with HAYCHE and Brighton-based branding agency Studio Makgill. It demonstrates a bold experimentation with colour, typical of the studio's adventurous creative ethos and is available in a selection of six colourways.

The two Ws in the bar stool's name stand for Windsor and Wire, which allude to its form and materials. It's a hybrid piece, which gives a contemporary twist to a traditional design language.



Above and right – Colourway 3

Technical Information



Colourways



Dimensions (cm)

H: 98cm; W: 45cm; D: 52cm

Seat height: 75cm

Weight

5.5 kg

Shipping

1 stool per box

Loom Chair

Designed by Alejandro Villarreal



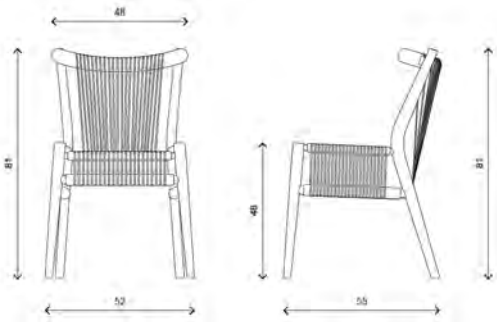
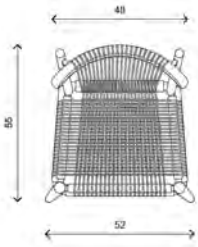
The Loom Chair is designed by Hierve, and pays homage to the ancient folk art of Mexican weaving. Each element of the deceptively simple wooden structure has been machine carved then sanded and finished by hand. Threads of elastic polyester woven cord are stretched to provide a comfortable seating experience. Light, practical and elegant, it makes the perfect dining, meeting room, or occasional chair.

The Loom Chair is available in a choice of solid or stained wood with woven cords in black, white or red.



Above and right – wood: walnut, black cords

Technical Information

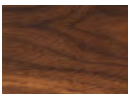


- Dimensions in cm

Woods



Oak Natural

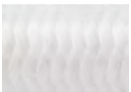


Walnut



Black Oak

Woven Cords



White



Black



Red

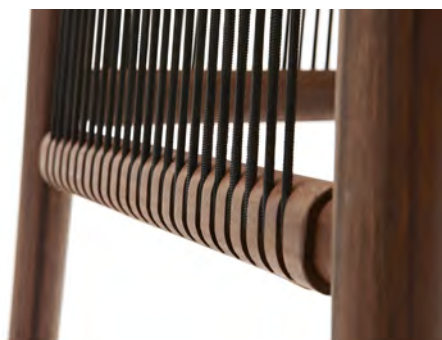
Loom Bar Stool

Designed by Alejandro Villarreal



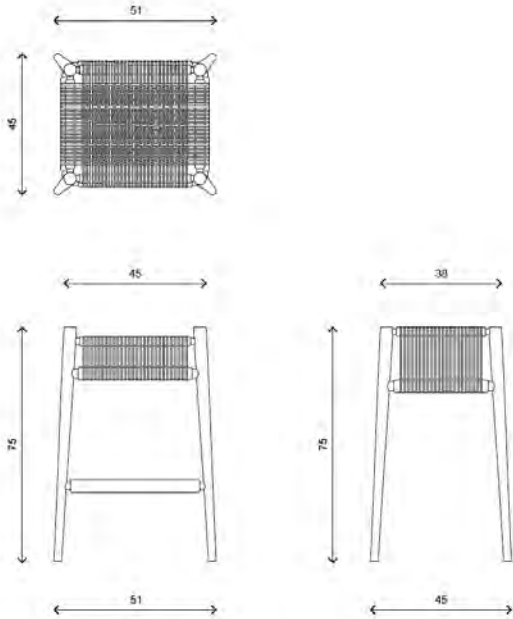
The Loom Bar Stool is designed by Herve, and pays homage to the ancient folk art of Mexican weaving. Threads of elastic polyester woven cord are stretched to provide a comfortable seating experience. The simple, clean lines of the Loom Bar Stool offer a stylish and sturdy piece, well-suited for the hospitality sector.

The Loom Bar Stool is available in a choice of solid or stained wood with woven cords in black, white or red and measures 75cm high.



Above, left to right -
Wood: walnut, black cords; wood: natural oak;
white cords.

Technical Information



- Dimensions in cm

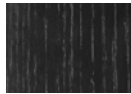
Woods



Oak Natural



Walnut



Black Oak

Woven Cords



White



Black



Red

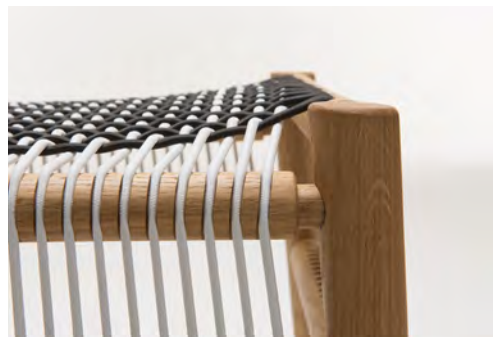
Loom Stool

Designed by Alejandro Villarreal



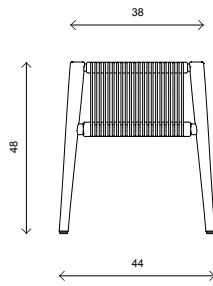
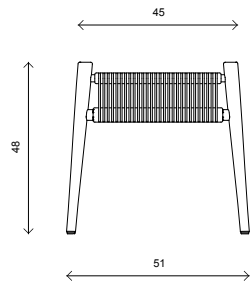
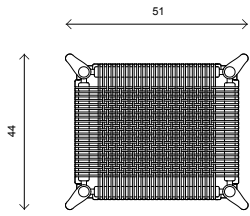
The Loom Stool is designed by Hierve, and pays homage to the ancient folk art of Mexican weaving. Each element of the deceptively simple wooden structure has been machine carved then sanded and finished by hand. Threads of elastic polyester woven cord are stretched to provide a comfortable seating experience.

The Loom Stool is available in a choice of solid or stained wood with woven cords in black, white or red. and it measures 48cm high.



Above and right -
Wood: natural oak; black and white cords.

Technical Information

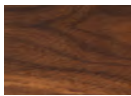


- Dimensions in cm

Woods



Oak Natural

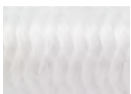


Walnut



Black Oak

Woven Cords



White



Black



Red

Loom Chair

Designed by Alejandro Villarreal + Ptolemy Mann



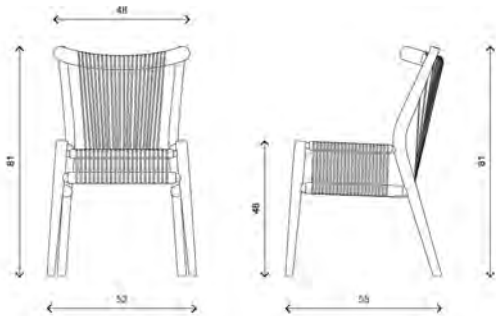
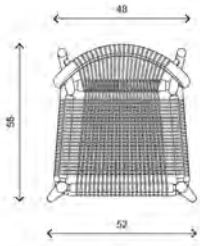
The Loom Chair designed by Herve, has been given a colourful makeover by British textiles designer Ptolemy Mann. The Loom collection pays homage to the ancient folk art of Mexican weaving. Ptolemy has used her background in textiles and creativity to produce a series of eye-catching and intriguing patterns and colour combinations.

The Loom Chair by Ptolemy Mann is available with woven compositions in green, deep blue and yellow.



Above and right -
Wood: walnut; deep blue woven cords.

Technical Information

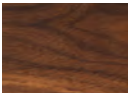


- Dimensions in cm

Woods



Oak Natural



Walnut

Woven Cords



Deep blue



Yellow



Green

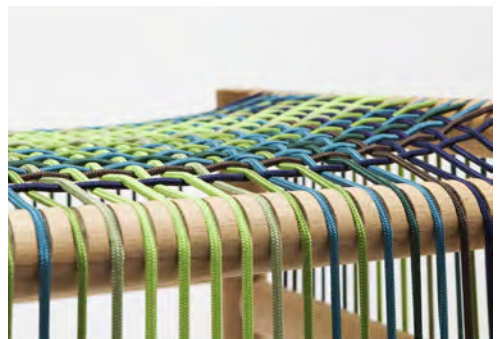
Loom Bar Stool

Designed by Alejandro Villarreal + Ptolemy Mann



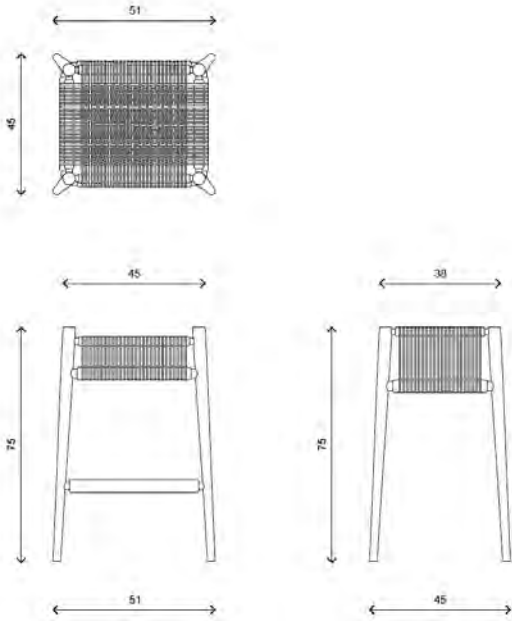
The Loom Bar Stool designed by Herve, has been given a colourful makeover by British textiles designer Ptolemy Mann. The Loom collection pays homage to the ancient folk art of Mexican weaving. Ptolemy has used her background in textiles and creativity to produce a series of eye-catching pattern and colour combinations. The simple, clean lines define this stylish and sturdy piece, which is also available as a bar stool.

The Loom Bar Stool by Ptolemy Mann is available with woven compositions in green, deep blue and yellow and measures 75cm high.



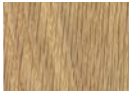
Above and right -
Wood: natural oak; green woven cords.

Technical Information

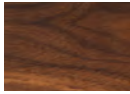


- Dimensions in cm

Woods



Oak Natural



Walnut

Woven Cords



Deep blue



Yellow



Green

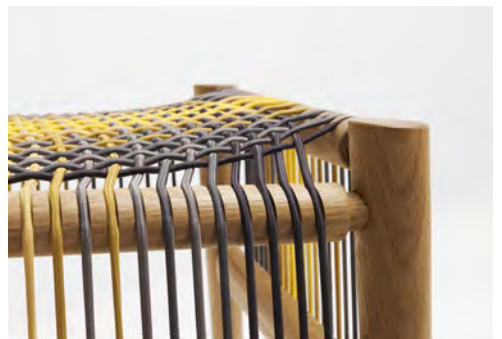
Loom Stool

Designed by Alejandro Villarreal + Ptolemy Mann



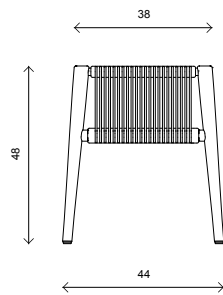
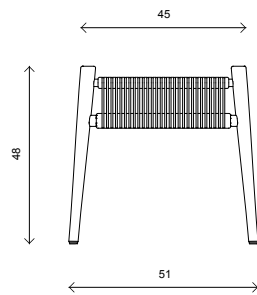
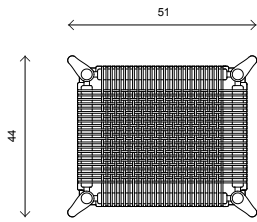
The Loom Stool designed by Hierve, has been given a colourful makeover by British textiles designer Ptolemy Mann. The Loom collection pays homage to the ancient folk art of Mexican weaving. Ptolemy has used her background in textiles and creativity to produce a series of eye-catching pattern and colour combinations. The simple, clean lines define this stylish and sturdy piece, which is also available as a bar stool.

The Loom Stool by Ptolemy Mann is available with woven compositions in green, deep blue and yellow and measures 48cm high.



Above and right -
Wood: natural oak; yellow woven cords.

Technical Information



- Dimensions in cm

Woods



Oak Natural



Walnut

Woven Cords



Deep blue



Yellow



Green

Norse Chair

Designed by Alejandro Villarreal



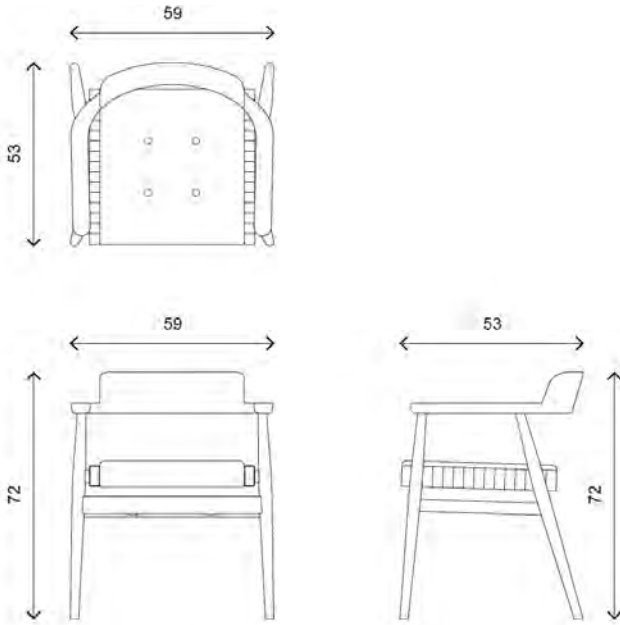
The Norse Chair designed by Herve is an elegant yet sturdy piece, with slightly inclined legs and gentle, flowing lines. Shown here with a solid wood curved backrest offering a firm yet comfortable support for the back, and creating a fluid line that sweeps naturally into the armrests.

The Norse Chair is available in natural oak, walnut or stained wood with a choice of contrasting soft leathers or fabrics.



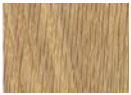
Above and right -
Wood: walnut; leather: Nero.

Technical Information

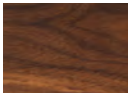


- Dimensions in cm

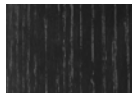
Woods



Oak Natural



Walnut



Black Oak

Leather



Nero



Teak

Fabric



Black



Grey

Norse Upholstered Back Chair

Designed by Alejandro Villarreal



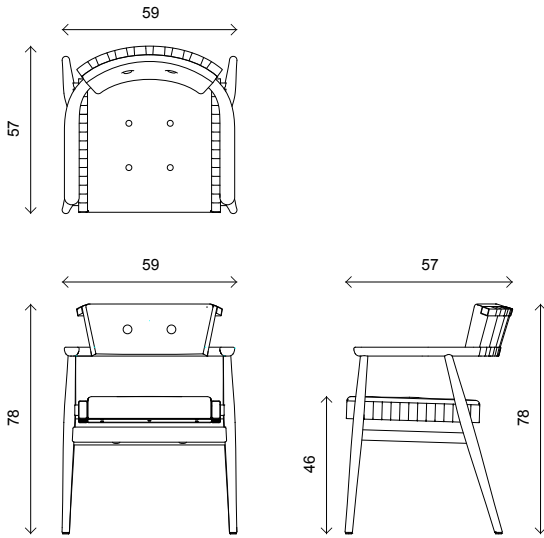
The Norse Upholstered Back Chair designed by Herve is an elevated version of the Norse Chair, with its subtly curved upholstered backrest for additional comfort. The backrest features two leather buttons, which add visual interest and mirror the leather work on the seat. Strips of leather are flush with the solid wood and create a sense of visual rhythm.

The Norse Upholstered Back Chair is available in natural oak, walnut or stained wood with a choice of contrasting soft leathers or fabrics.



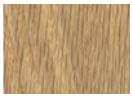
Above and right -
Wood: natural oak; leather: Nero.

Technical Information



- Dimensions in cm

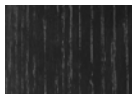
Woods



Oak Natural



Walnut

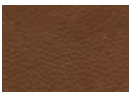


Black Oak

Leather



Nero



Teak

Fabric



Black



Grey

Norse Bar Stool

Designed by Alejandro Villarreal



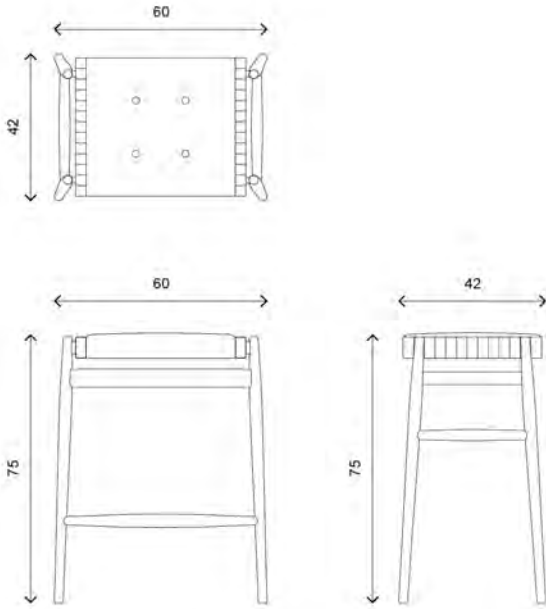
The Norse Bar Stool designed by Herve is strikingly elegant, comfortable and versatile. With comfort the priority, the seat is buttoned and well padded. The design is simple in appearance but complex to make, demanding precise carpentry and impeccable upholstery work. The repeated 30mm-wide straps sit flush and create visual interest.

The Norse Bar Stool is available in natural oak, walnut or stained wood with a choice of contrasting soft leathers or fabrics and measures 75cm high.



Above and right -
Wood: walnut; leather: desert.

Technical Information



- Dimensions in cm

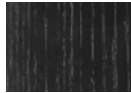
Woods



Oak Natural



Walnut



Black Oak

Leather



Nero



Teak

Fabric



Black



Grey

Norse Stool

Designed by Alejandro Villarreal



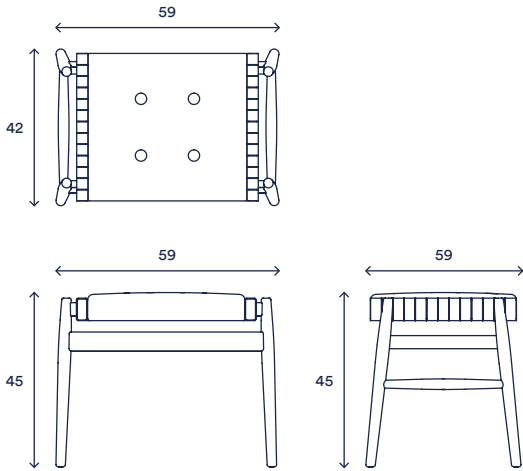
The Norse Stool designed by Herve combines classic proportions and profile with interesting design details. The legs taper towards the top and bottom, maintaining the gentle and flowing lines. The stool is simple in appearance but complex to make, demanding precise carpentry and impeccable upholstery work. The repeated 30mm-wide leather straps sit flush and create visual interest on the side panels. The stool can be used for occasional seating, or as a footrest.

The Norse Stool is available in natural oak, walnut or stained wood with a choice of contrasting soft leathers or fabrics and measures 45cm high.



Above and right - wood: oak; leather: Nero.

Technical Information

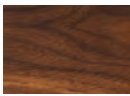


- Dimensions in cm

Woods



Oak Natural

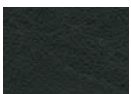


Walnut

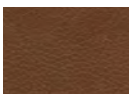


Black Oak

Leather



Nero

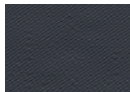


Teak

Fabric



Black



Grey

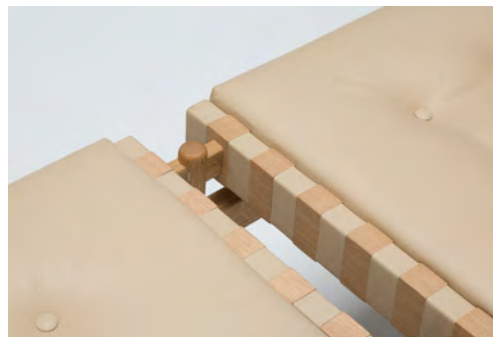
Norse Bench

Designed by Alejandro Villarreal



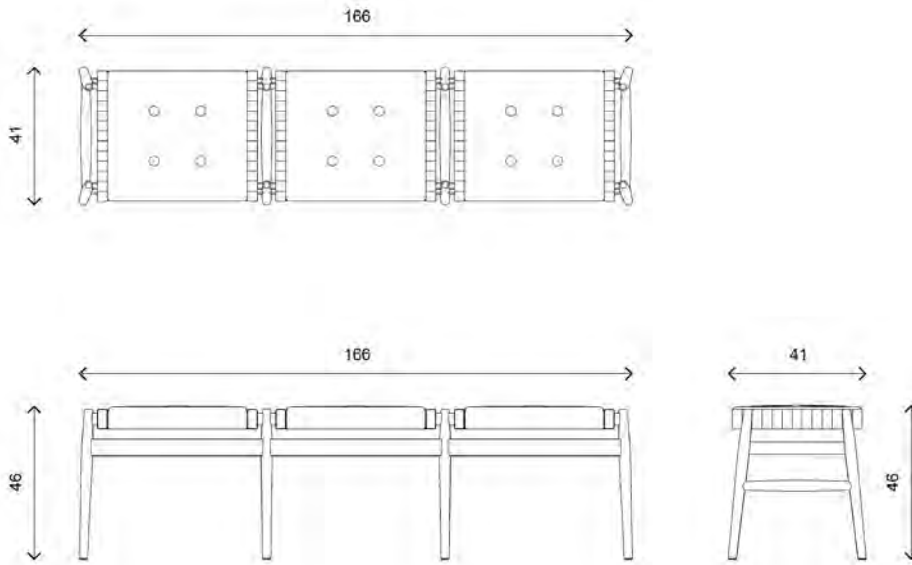
The Norse Bench designed by Herve is a unique typology - neither a stool nor a bench. However, its proportions and profile remain reassuringly classic, based on the clean, minimalist lines of mid-century Scandinavian design. With eight beautifully tapered legs, and buttoned leather seat, this piece is practical and versatile and can provide seating in almost any room in the house or the office. Simple, flush 30mm wide straps on the side panels add visual interest.

The Norse Bench is available in natural oak, walnut or stained wood with a choice of contrasting soft leathers or fabrics and measures 45cm high.



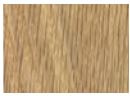
Above and right - wood: oak; leather: desert

Technical Information



- Dimensions in cm

Woods



Oak Natural

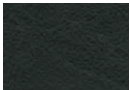


Walnut

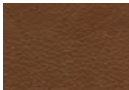


Black Oak

Leather



Nero



Teak

Fabric



Black



Grey



Tables

Pie Chart System

Designed by Alejandro Villarreal



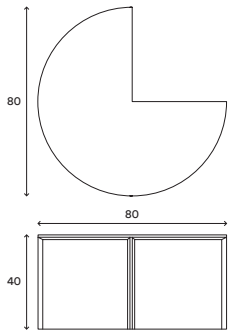
The Pie Chart System is designed by Hierve, and forms an ingenious modular system made entirely from engineered wood. It can be built up from five different pieces: quarter circle table, quarter circle container, half circle table, half circle container and three quarter circle table. The container gives storage space with a removable lid.

Each piece is available, and successfully functions, separately or as part of the set. The Pie Chart System is available in natural oak, walnut or stained wood and measures 40cm high.

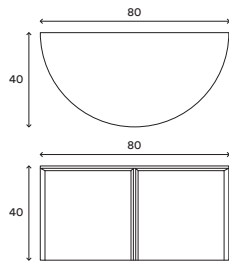


Above and right – wood: half circle table in black; quarter circle container in natural oak; three-quarter circle table in yellow; quarter circle table in white.

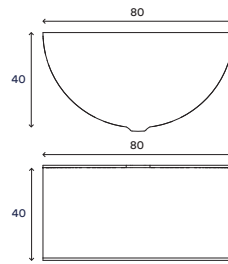
Technical Information



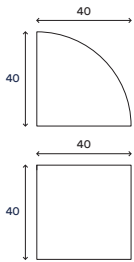
Three-quarter table



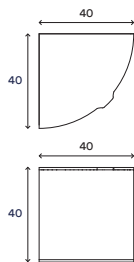
Half circle table



Half circle container



Quarter circle table



Quarter circle container

- Dimensions in cm

Woods



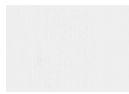
Oak Natural



Walnut



Black Oak



White Oak



Grey



Yellow



Bespoke



At HAYCHE, we can adapt or modify our designs to your particular needs. Whether you need a different finish for the WW Chair, or another kind of wood to fit your interiors scheme, we can make the appropriate adjustments.

Contact our sales team and we will accommodate your request.

Contact

Call	+44 2073 057 382
Enquiries	hello@hayche.com
Sales	sales@hayche.com
Visit	www.hayche.com
Social	@hayche

Hayche Showroom London - 30D Great Sutton Street, EC1V 0DU.
Company registration number: 8439199

Photography: Peter Guenzel & Reinis Hofmanis
Copyright © 2017 HAYCHE (H Furniture Ltd.)

www.hayche.com

