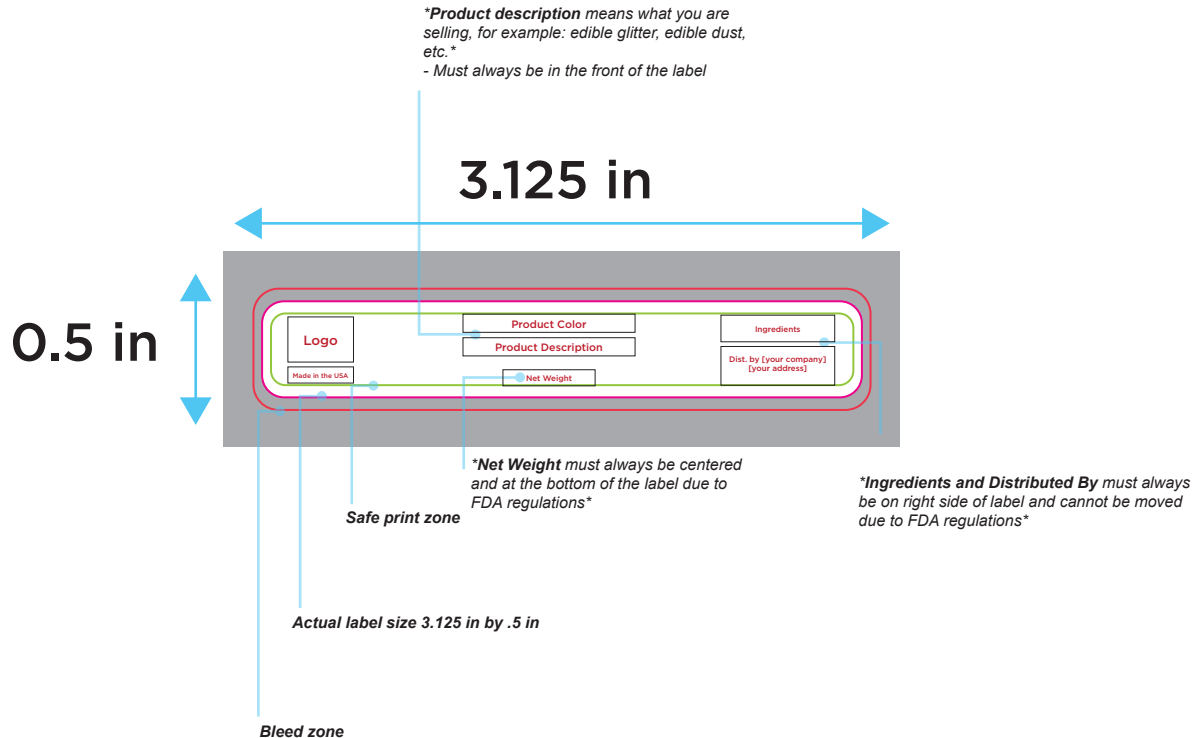
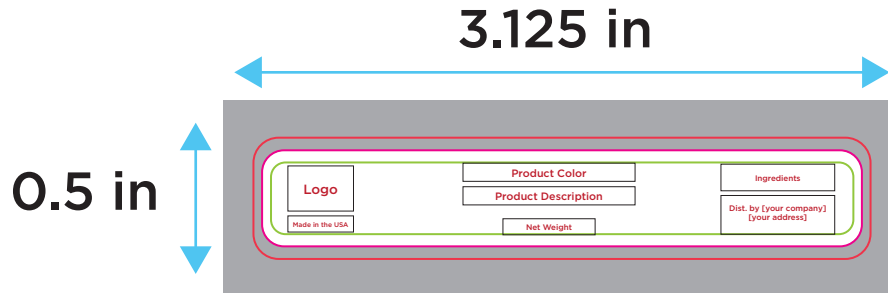


# STANDARD DIELINE

(4g/5g Label)



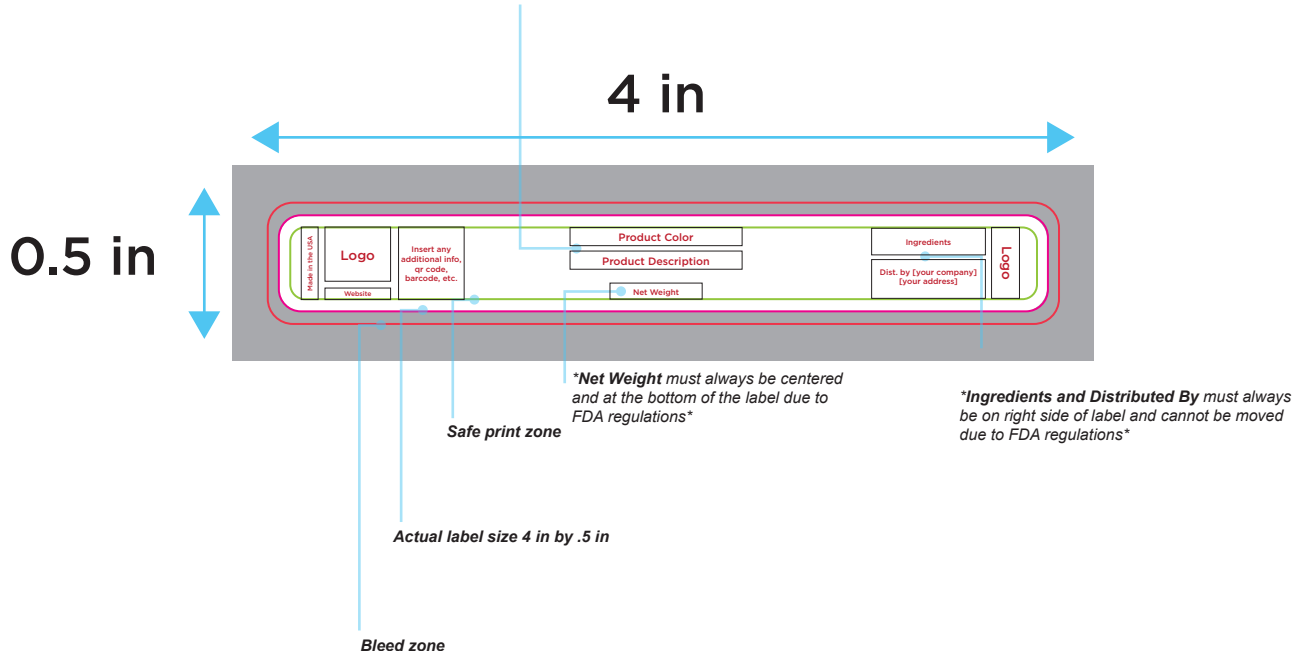
# DESIGN DIELINE (4g/5g Label)



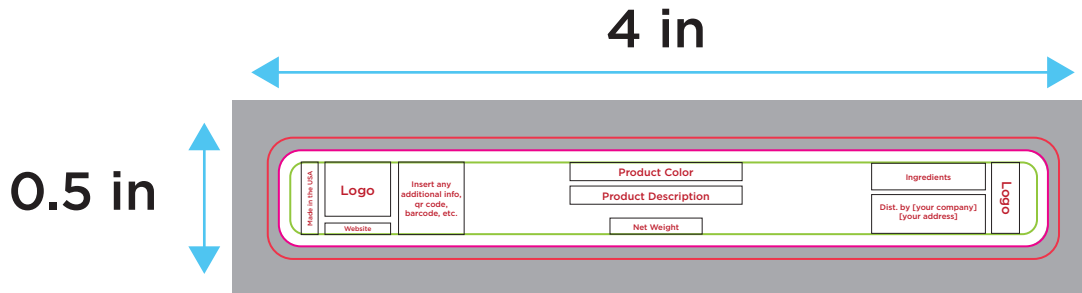
# PREMIUM DIELINE (4g/5g Label)



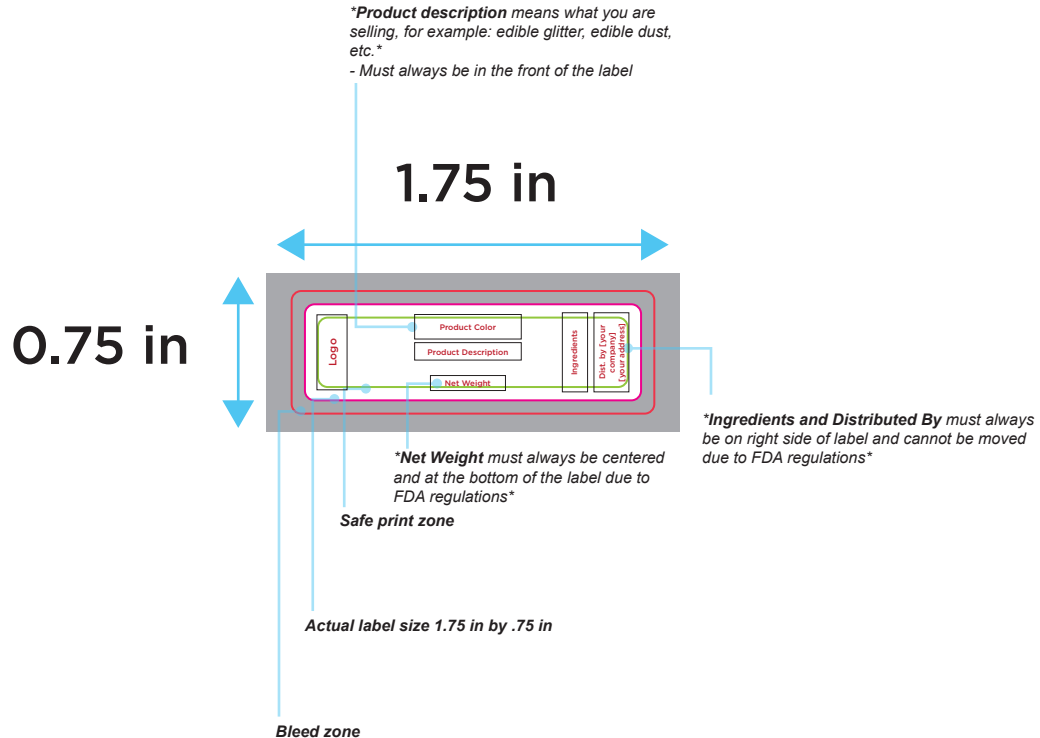
*\*Product description means what you are selling, for example: edible glitter, edible dust, etc.\*  
- Must always be in the front of the label*



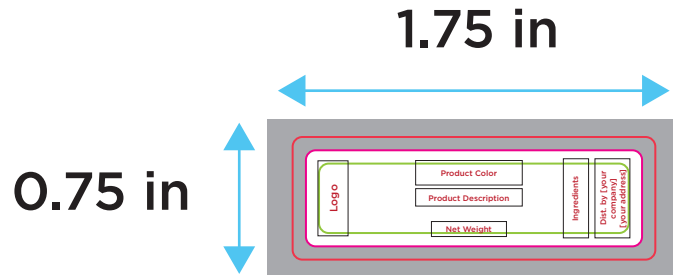
# DESIGN DIELINE (4g/5g Label)



# SAMPLE DIELINE (Approx. 0.5g Label)



# DESIGN DIELINE (Approx. 0.5g Label)

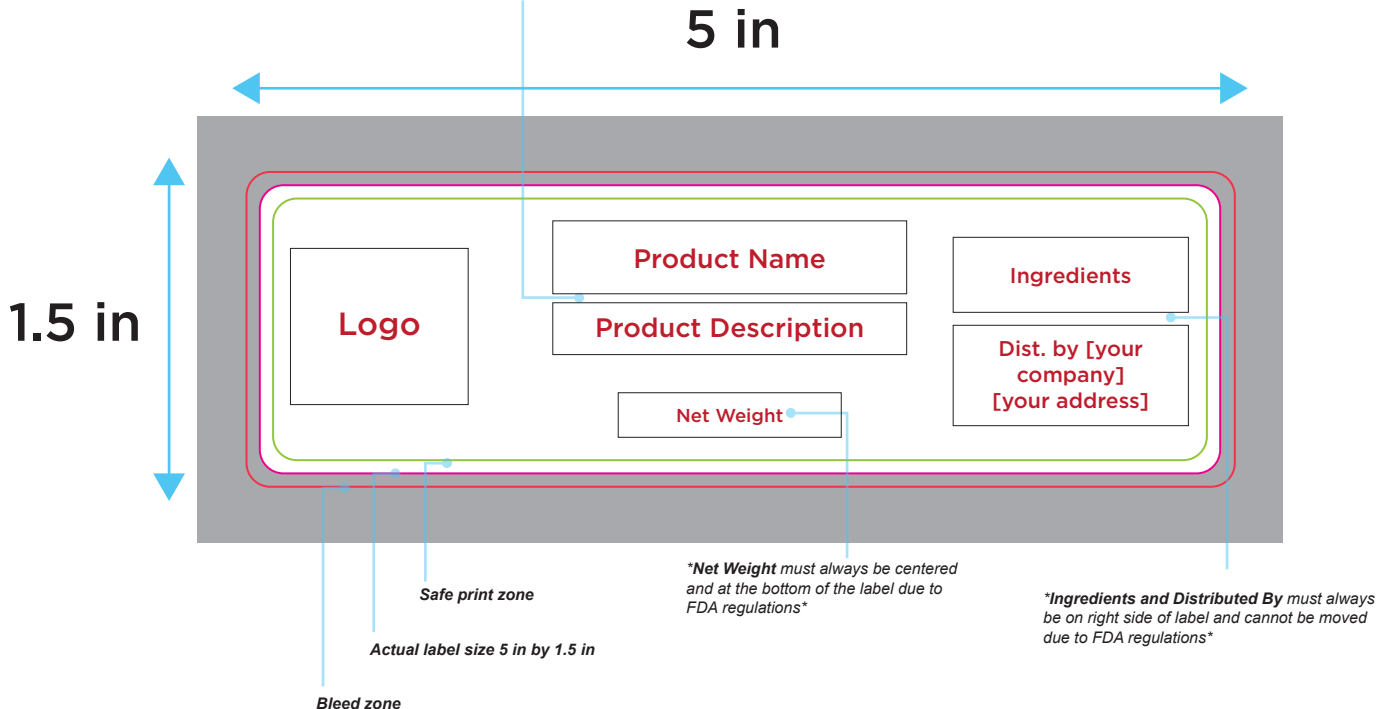


# BULK DIELINE

(25g JAR/PUMP, 45g SHAKER, 50g JAR)

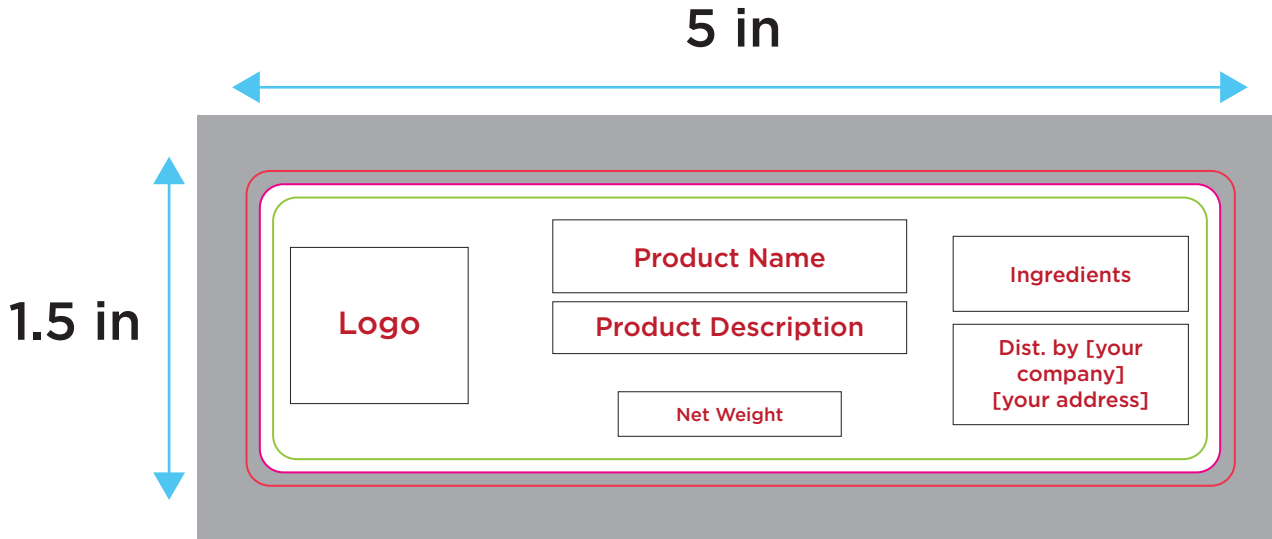


*\*Product description means what you are selling, for example: edible glitter, edible dust, etc.\*  
- Must always be in the front of the label*



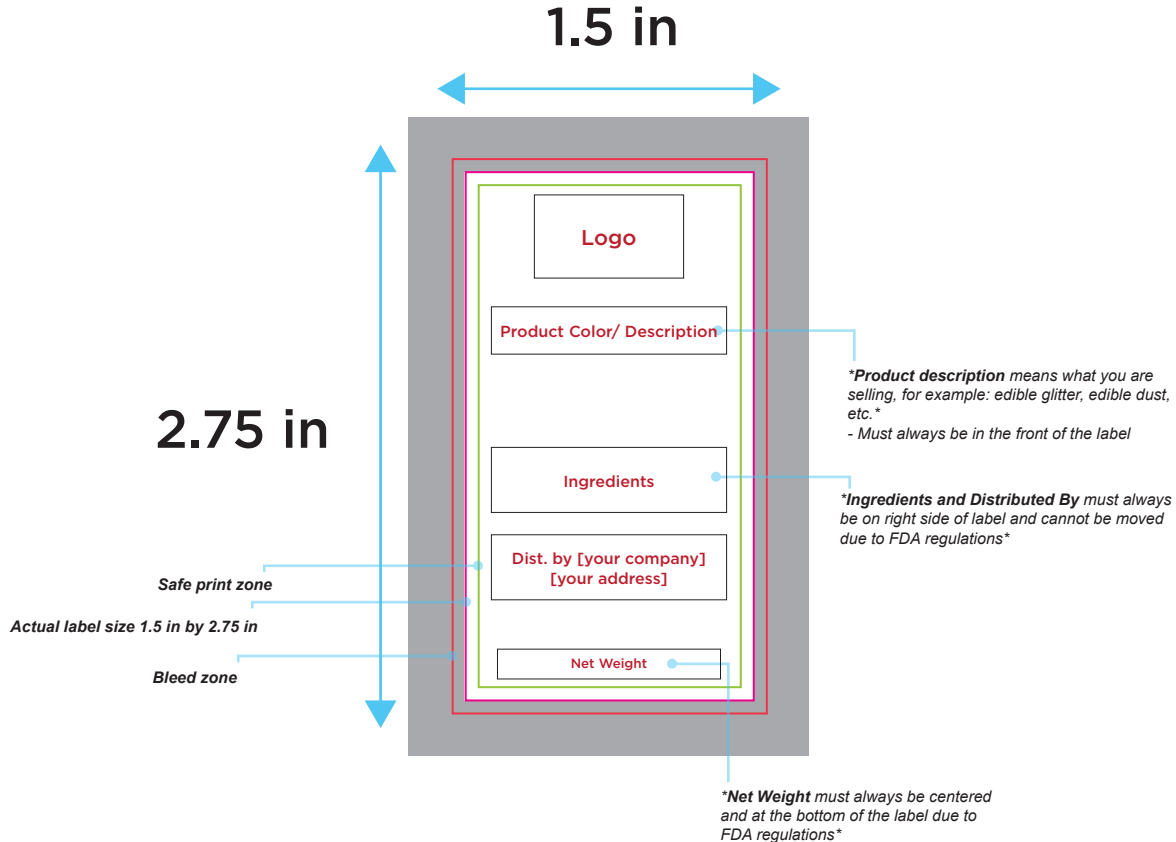
# DESIGN DIELINE

(25g JAR/PUMP, 45g SHAKER, 50g JAR)

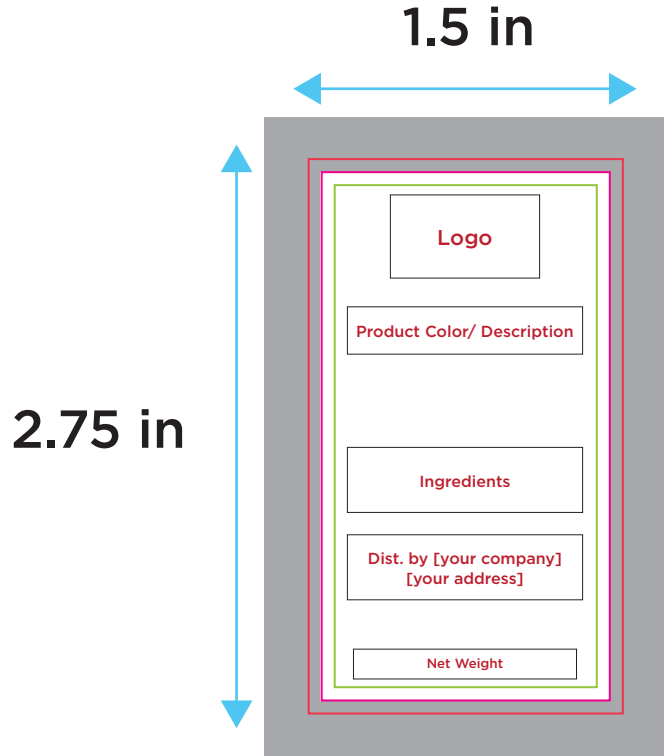




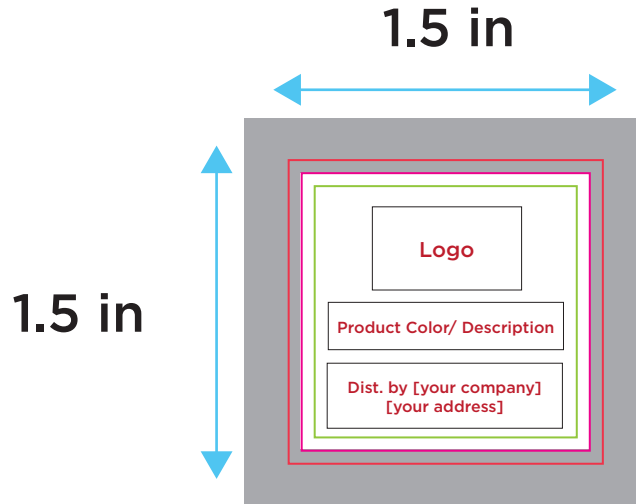
# SPRINKLES DIELINE (1/2 cup)



# DESIGN DIELINE (1/2 cup)



# PACKAGING DIELINE

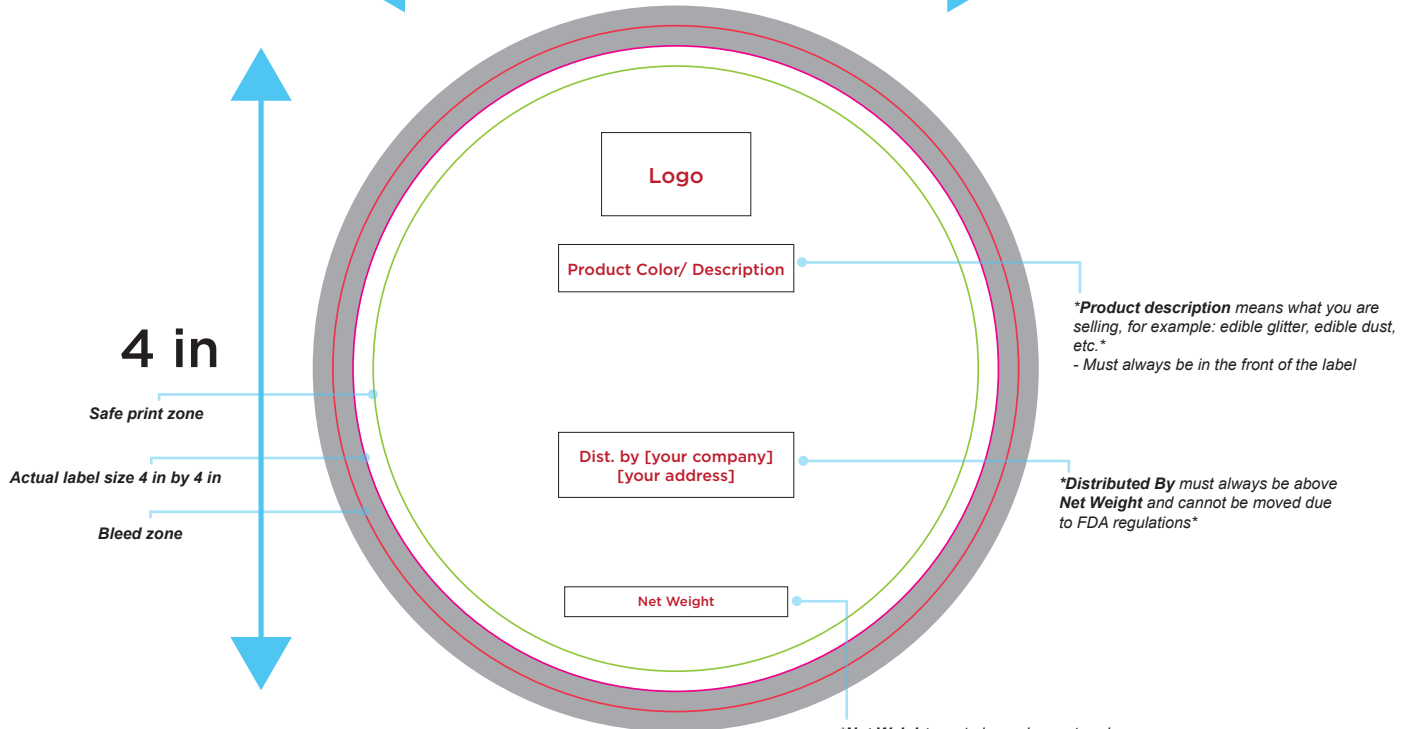


# RIMMING SERIES DIELINE (Circle Tin)



4 in

4 in



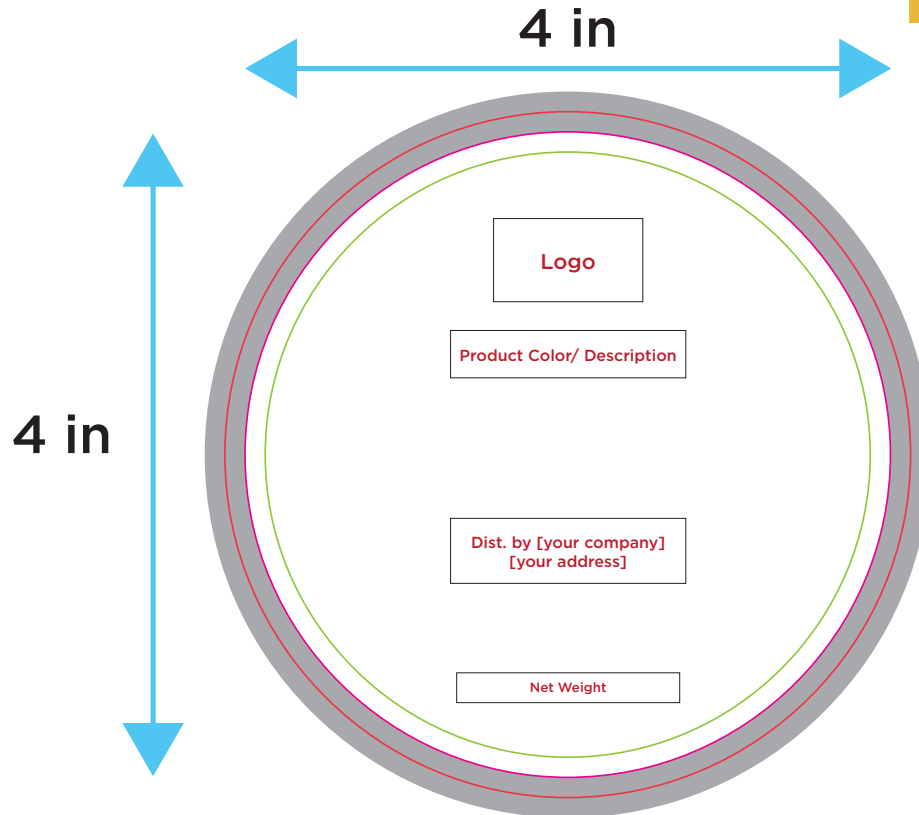
**\*Product description** means what you are selling, for example: edible glitter, edible dust, etc.\*  
- Must always be in the front of the label

**\*Distributed By** must always be above **Net Weight** and cannot be moved due to FDA regulations\*

**\*Net Weight** must always be centered and at the bottom of the label due to FDA regulations\*

**\*Nutritional Information & Ingredients** will be provided on a 3.25 in by 3.25 **NON-CUSTOMIZABLE** label.

# RIMMING SERIES DIELINE (Circle Tin)



*\*Nutritional Information & Ingredients will be provided on a 3.25 in by 3.25 in NON-CUSTOMIZABLE label.*

# BULK DIELINE

(4g Pump)



*\*Product description means what you are selling, for example: edible glitter, edible dust, etc.\**  
*- Must always be in the front of the label*

3 in

1 in



**Safe print zone**  
**Actual label size 5 in by 1.5 in**  
**Bleed zone**

*\*Net Weight must always be centered and at the bottom of the label due to FDA regulations\**

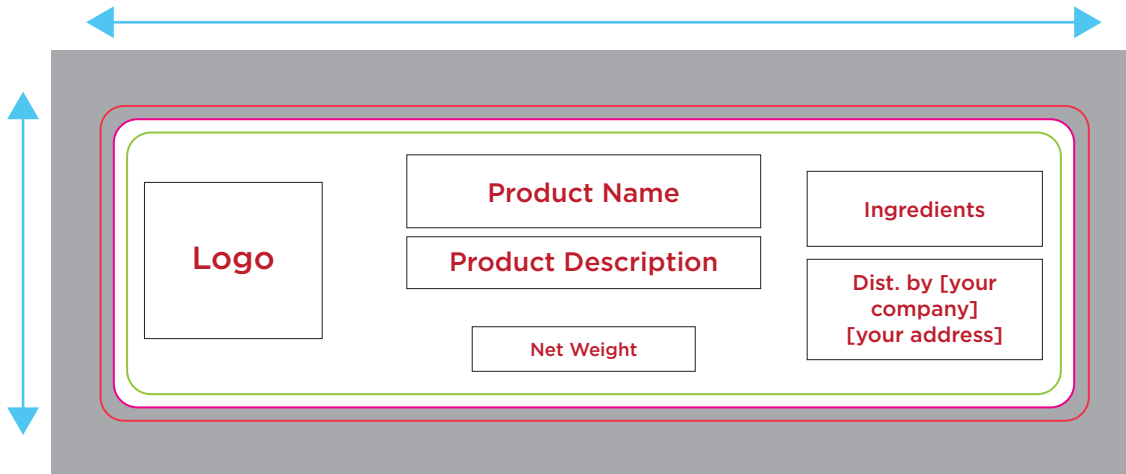
*\*Ingredients and Distributed By must always be on right side of label and cannot be moved due to FDA regulations\**

# BULK DIELINE

(4g Pump)



3 in



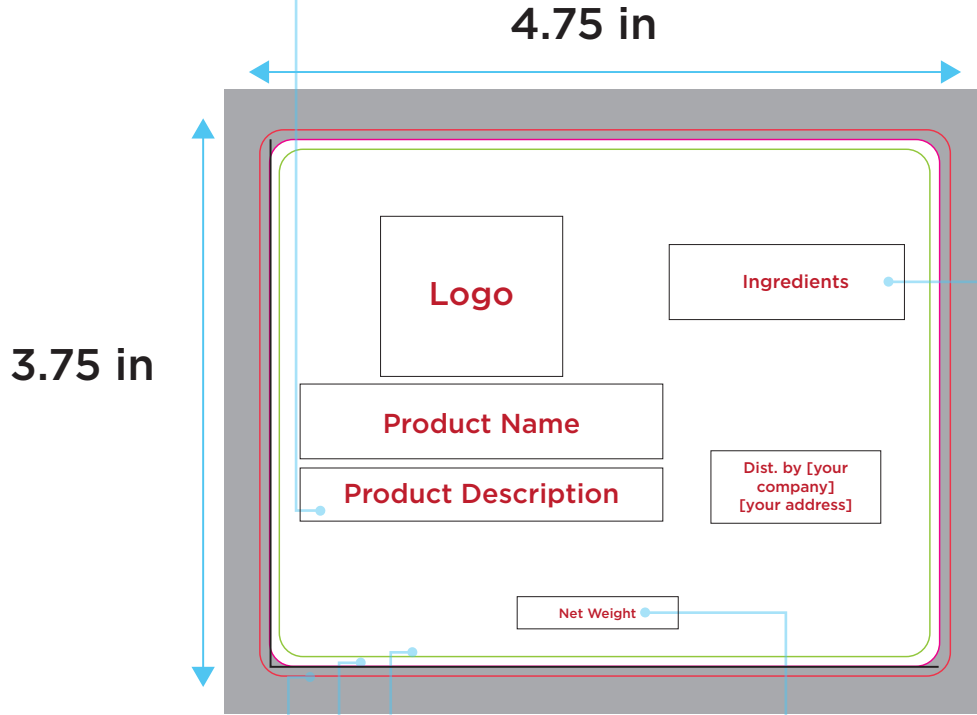
1 in

# BULK DIELINE

(1lb bag)



*\*Product description means what you are selling, for example: edible glitter, edible dust, etc.\*  
- Must always be in the front of the label*



*\*Ingredients and Distributed By must always be on right side of label and cannot be moved due to FDA regulations\**

*\*Net Weight must always be centered and at the bottom of the label due to FDA regulations\**

Actual label size 5 in by 1.5 in

Bleed zone

Safe print zone