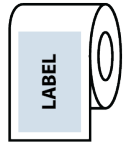


PREMIUM .5" x 4.125" CURVED DIELINE (4g Jar)

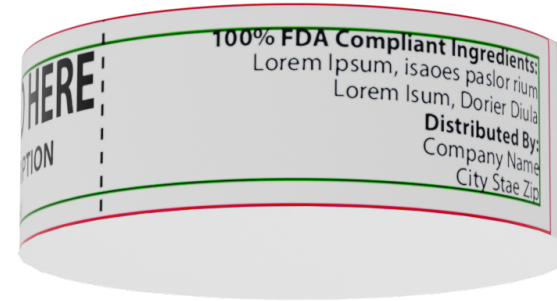
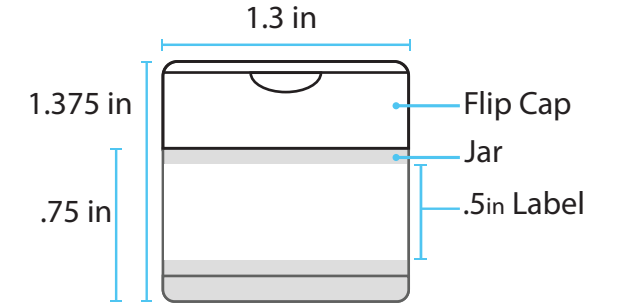
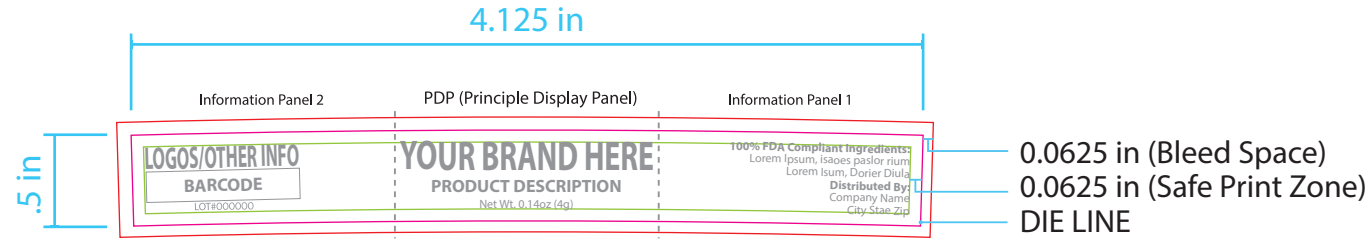
- BLEED
- DIELINE
- FOLD LINE
- SAFE ZONE
- SEAL AREA
- BLANK AREA

#4

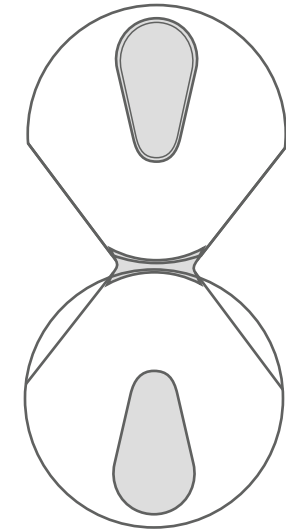


Left Side First

Left side of label will come off the roll first

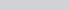


Rendered Label

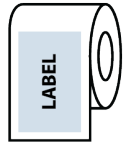


1.375in
Flip Cap

PREMIUM .5" x 4.125" CURVED DIELINE (4g Jar)

- BLEED 
- DIELINE 
- FOLD LINE 
- SAFE ZONE 
- SEAL AREA 
- BLANK AREA 

#4



Left Side First

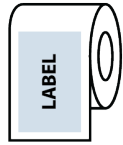
Left side of label will come off the roll first



PREMIUM .5" x 4" STRAIGHT DIELINE (4g Jar)

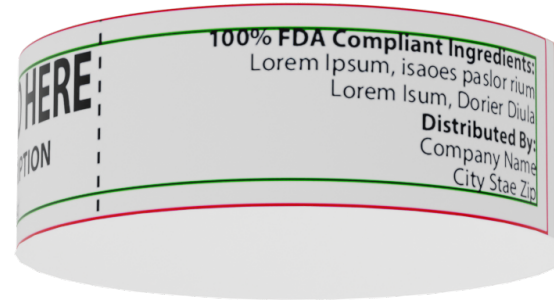
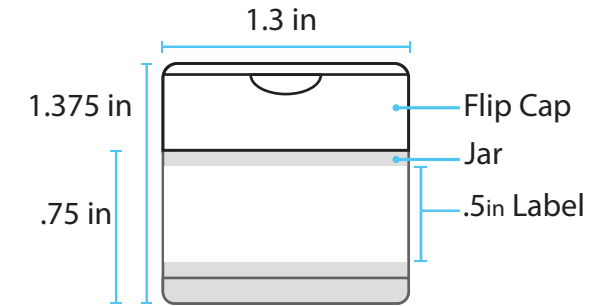
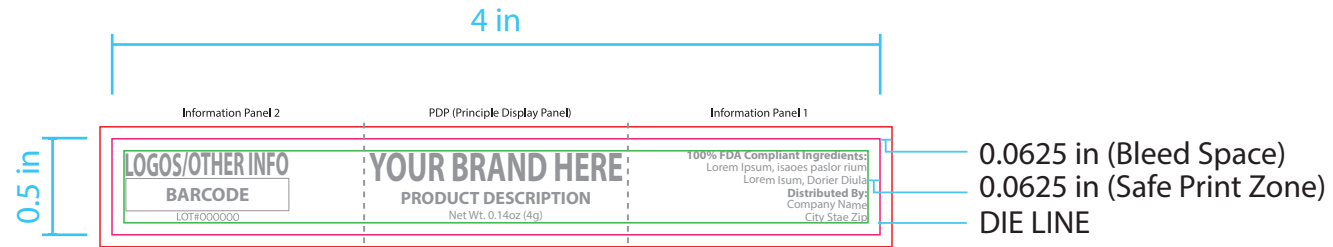
- BLEED
- DIELINE
- FOLD LINE
- SAFE ZONE
- SEAL AREA
- BLANK AREA

#4

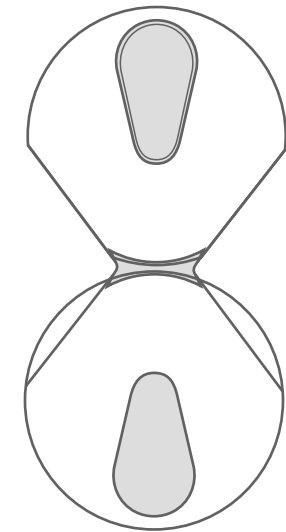


Left Side First

Left side of label will come off the roll first




Rendered Label

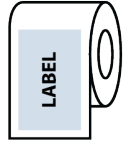


1.375in
Flip Cap

PREMIUM .5" x 4" STRAIGHT DIELINE (4g Jar)

- BLEED 
- DIELINE 
- FOLD LINE 
- SAFE ZONE 
- SEAL AREA 
- BLANK AREA 

#4



Left Side First

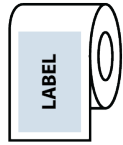
Left side of label will come off the roll first

LOGOS/OTHER INFO BARCODE LOT#000000	YOUR BRAND HERE PRODUCT DESCRIPTION Net Wt. 0.14oz (4g)	100% FDA Compliant Ingredients: Lorem Ipsum, Isocapsaicin Lorem Ipsum, Dried Chili Distributed By: Company Name City State Zip
---	---	---

STANDARD .5" x 3.125" STRAIGHT DIELINE (4g Jar)

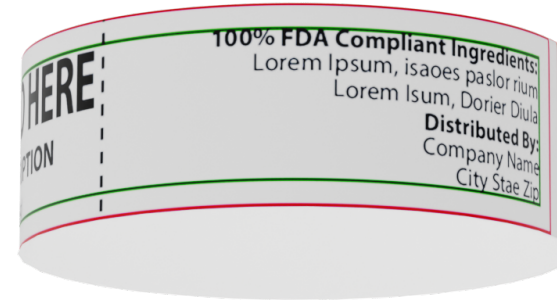
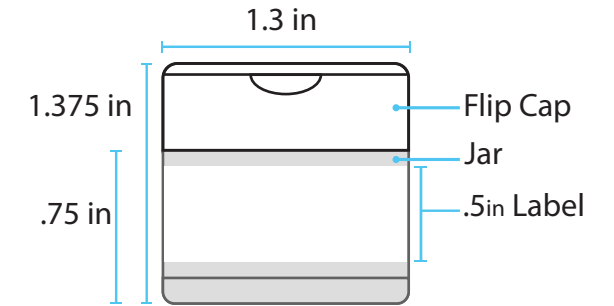
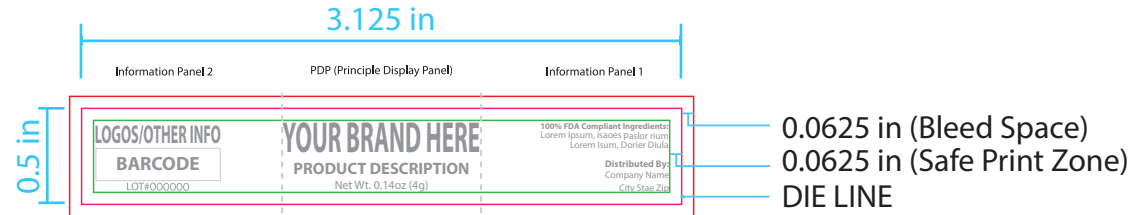
- BLEED
- DIELINE
- FOLD LINE
- SAFE ZONE
- SEAL AREA
- BLANK AREA

#4

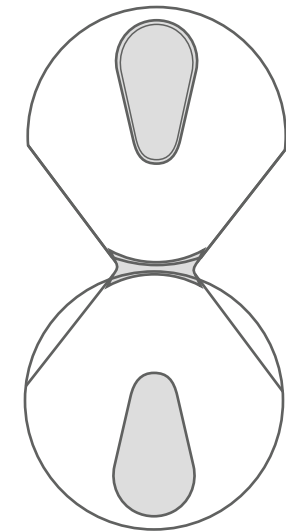


Left Side First

Left side of label will come off the roll first



Rendered Label

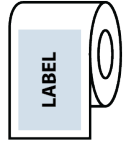


1.375in
Flip Cap

STANDARD .5" x 3.125" STRAIGHT DIELINE (4g Jar)



#4



Left Side First

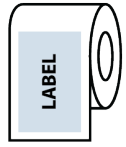
Left side of label will come off the roll first



STANDARD 1" x 3" DIELINE (4g Mini Pump)

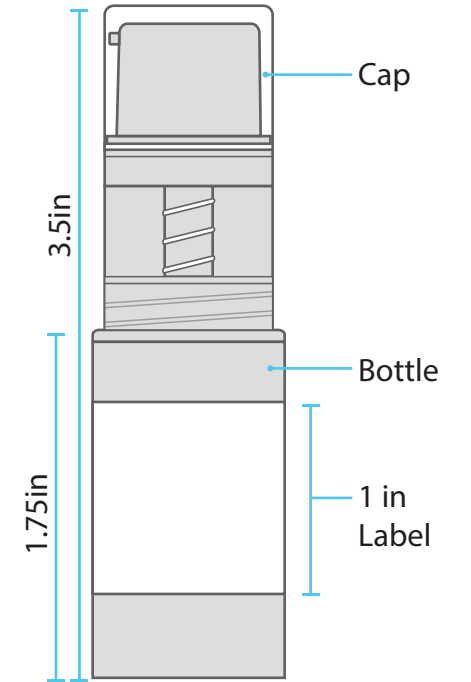
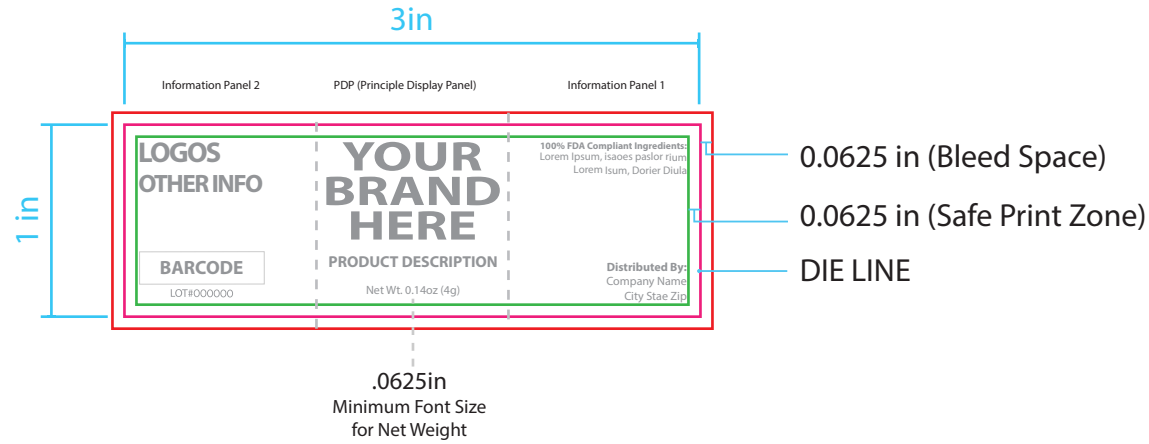
- BLEED
- DIELINE
- FOLD LINE
- SAFE ZONE
- SEAL AREA
- BLANK AREA

#4



Left Side First

Left side of label will come off the roll first

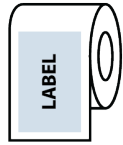


Rendered Label

STANDARD 1" x 3" DIELINE (4g Mini Pump)



#4



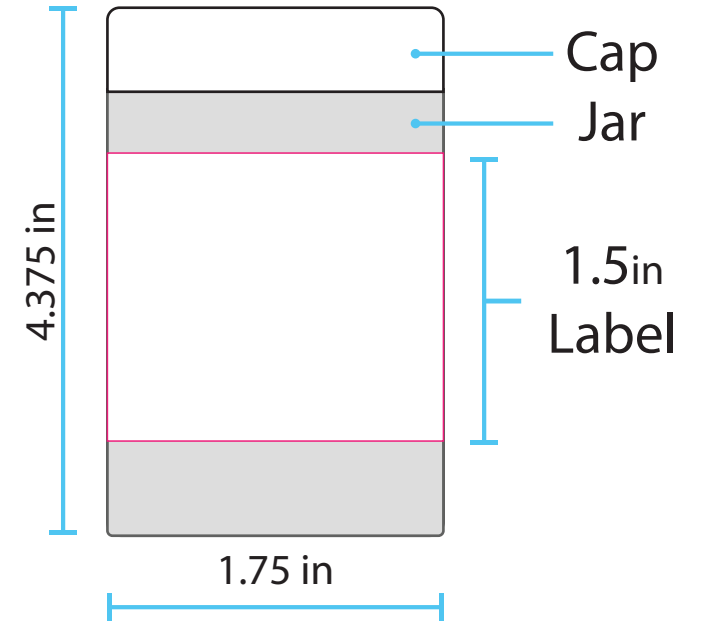
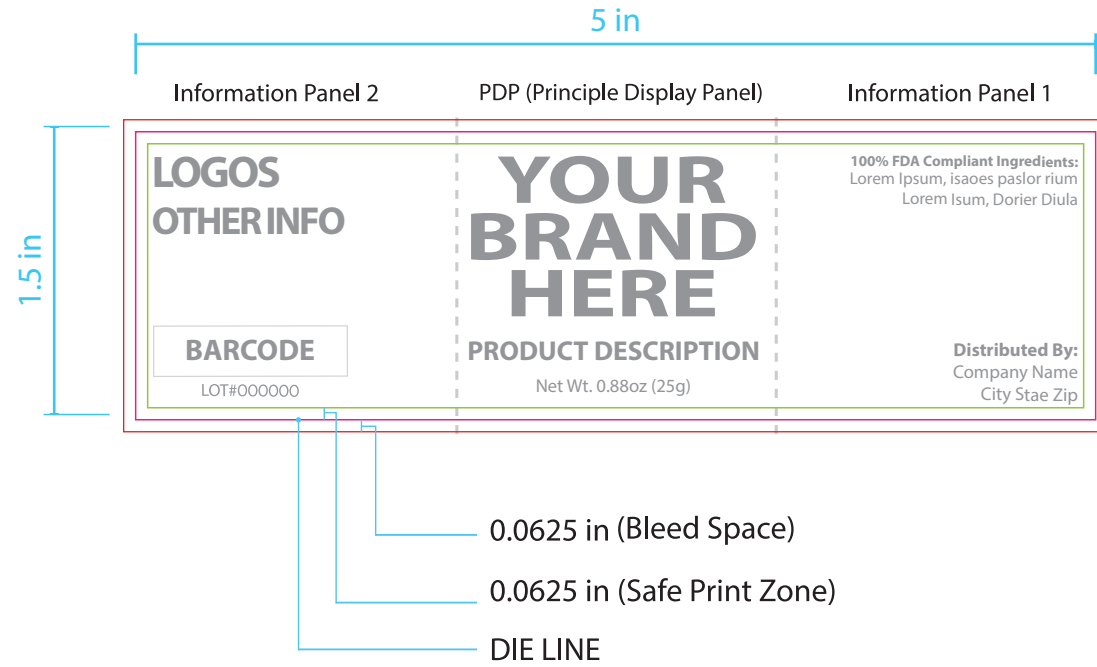
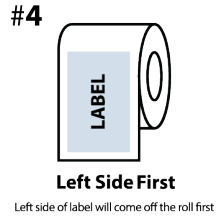
Left Side First

Left side of label will come off the roll first





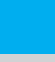
STANDARD 1.5" x 5" DIELINE (25g Jar)

- BLEED
- DIELINE
- FOLD LINE
- SAFE ZONE
- SEAL AREA
- BLANK AREA

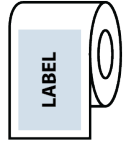


Rendered Label

STANDARD 1.5" x 5" DIELINE (25g Jar)

- BLEED 
- DIELINE 
- FOLD LINE 
- SAFE ZONE 
- SEAL AREA 
- BLANK AREA 

#4



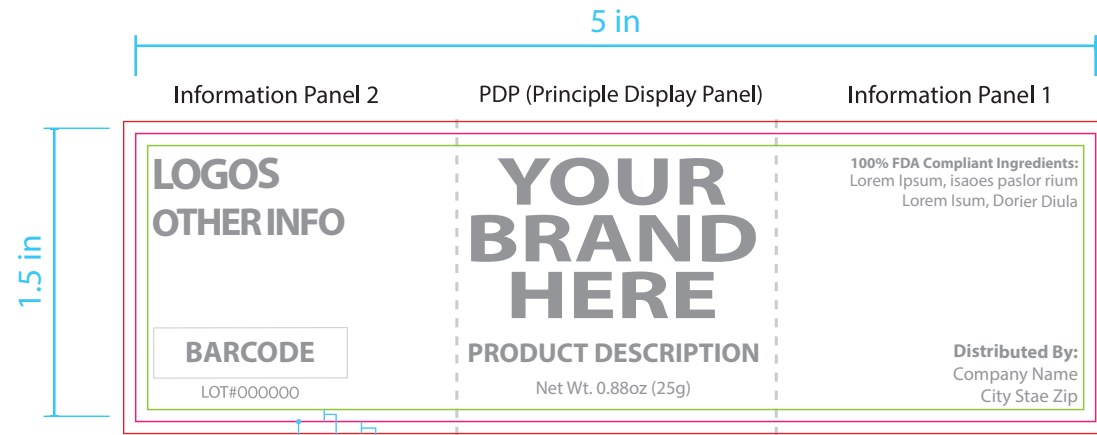
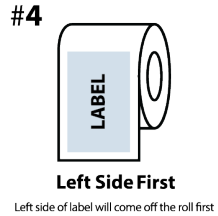
Left Side First

Left side of label will come off the roll first

<p>LOGOS OTHER INFO</p> <p>BARCODE LOT#000000</p>	<p>YOUR BRAND HERE</p> <p>PRODUCT DESCRIPTION Net Wt. 0.88oz (25g)</p>	<p>100% FDA Compliant Ingredients: Lorem Ipsum, isaoes paslor rium Lorem Isum, Dorier Diula</p> <p>Distributed By: Company Name City Stae Zip</p>
--	--	---

STANDARD 1.5" x 5" DIELINE (25g Pump)

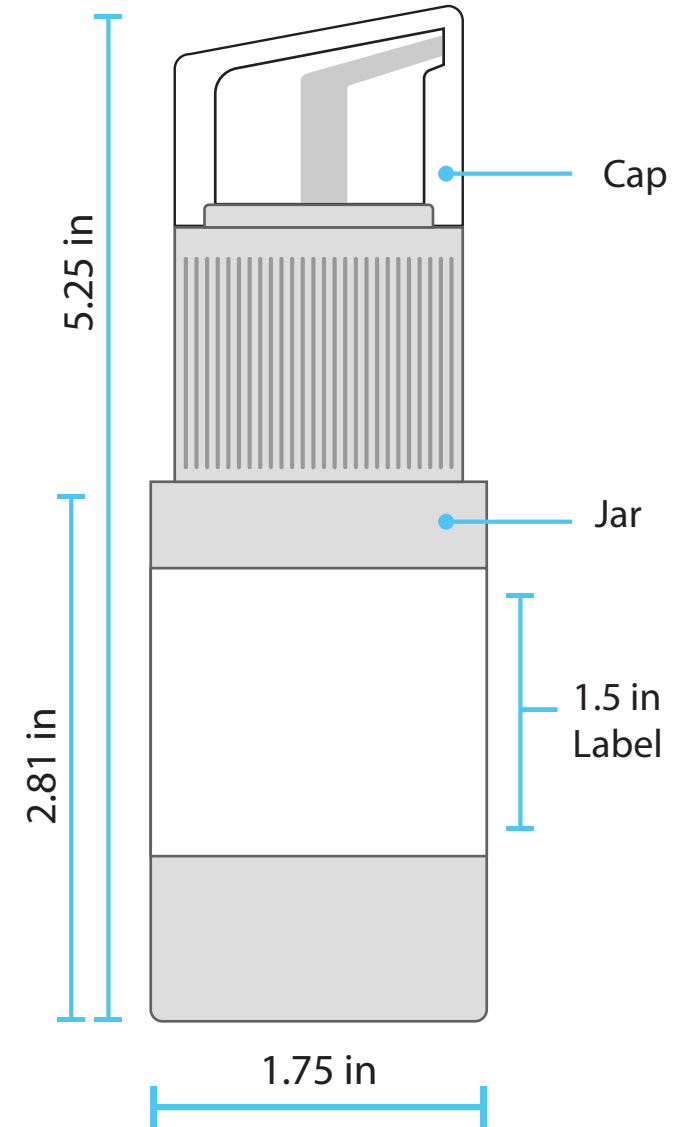
- BLEED —
- DIELINE —
- FOLD LINE - - -
- SAFE ZONE —
- SEAL AREA
- BLANK AREA






0.0625 in (Bleed Space)
0.0625 in (Safe Print Zone)
DIE LINE



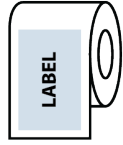
Rendered Label



STANDARD 1.5" x 5" DIELINE (25g Pump)

- BLEED 
- DIELINE 
- FOLD LINE 
- SAFE ZONE 
- SEAL AREA 
- BLANK AREA 

#4



Left Side First

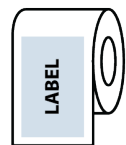
Left side of label will come off the roll first

<p>LOGOS OTHER INFO</p> <p>BARCODE LOT#000000</p>	<p>YOUR BRAND HERE</p> <p>PRODUCT DESCRIPTION Net Wt. 0.88oz (25g)</p>	<p>100% FDA Compliant Ingredients: Lorem Ipsum, isaoes paslor rium Lorem Isum, Dorier Diula</p> <p>Distributed By: Company Name City Stae Zip</p>
--	--	---

STANDARD 1.5" x 5" DIELINE (45g Shaker)

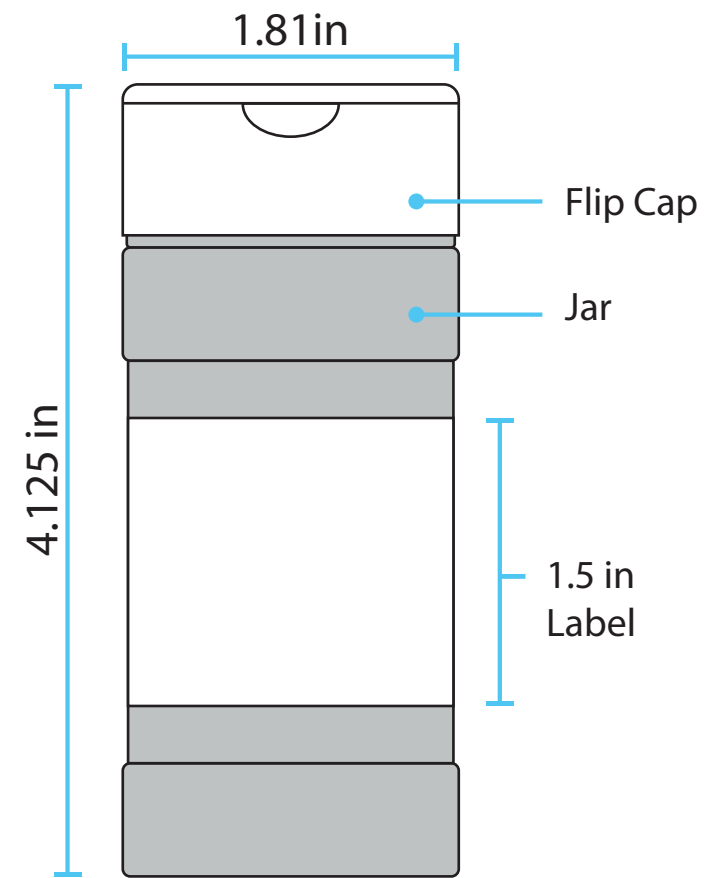
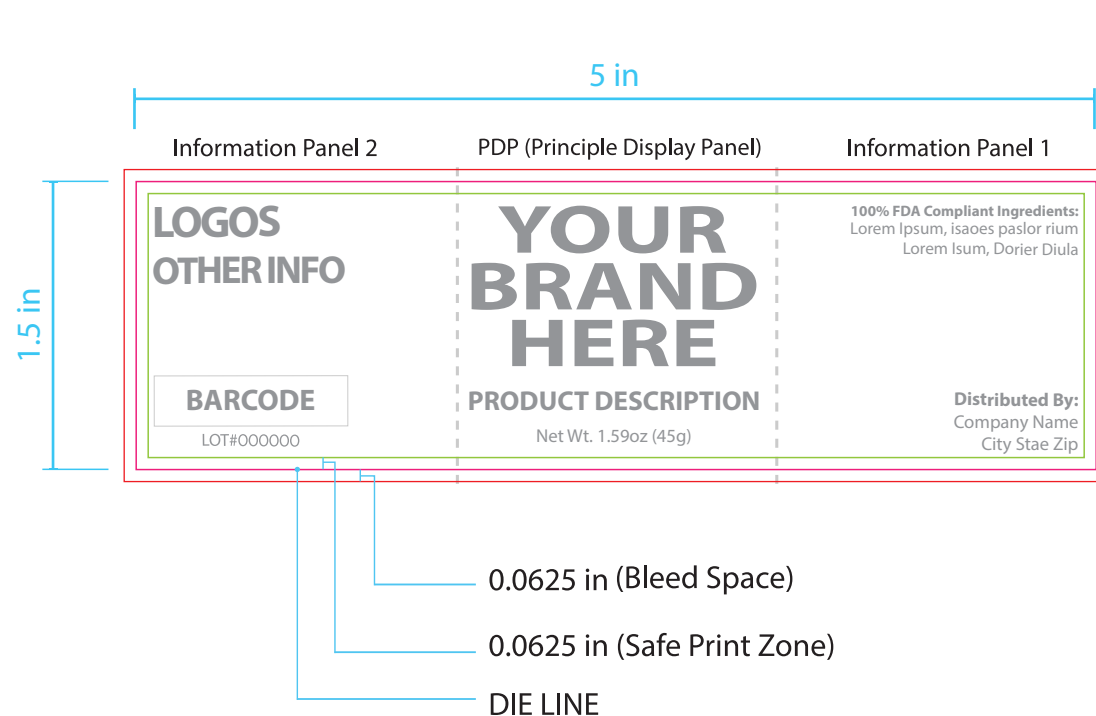
- BLEED
- DIELINE
- FOLD LINE
- SAFE ZONE
- SEAL AREA
- BLANK AREA

#4

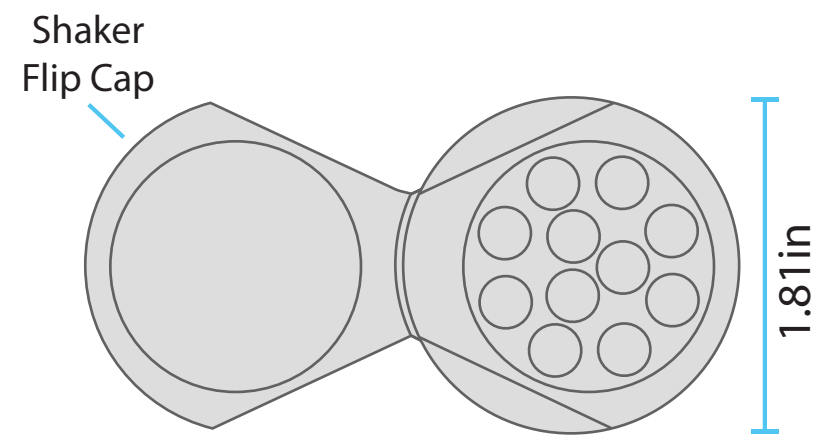


Left Side First



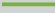
Left side of label will come off the roll first



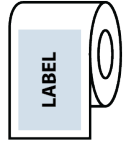
Rendered Label



STANDARD 1.5" x 5" DIELINE (45g Shaker)

- BLEED 
- DIELINE 
- FOLD LINE 
- SAFE ZONE 
- SEAL AREA 
- BLANK AREA 

#4



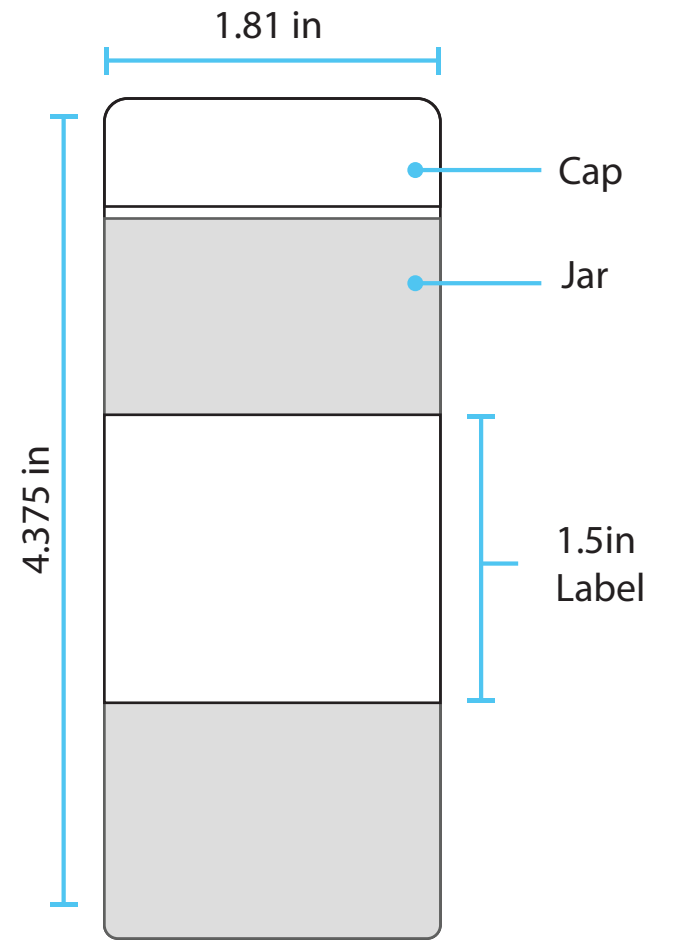
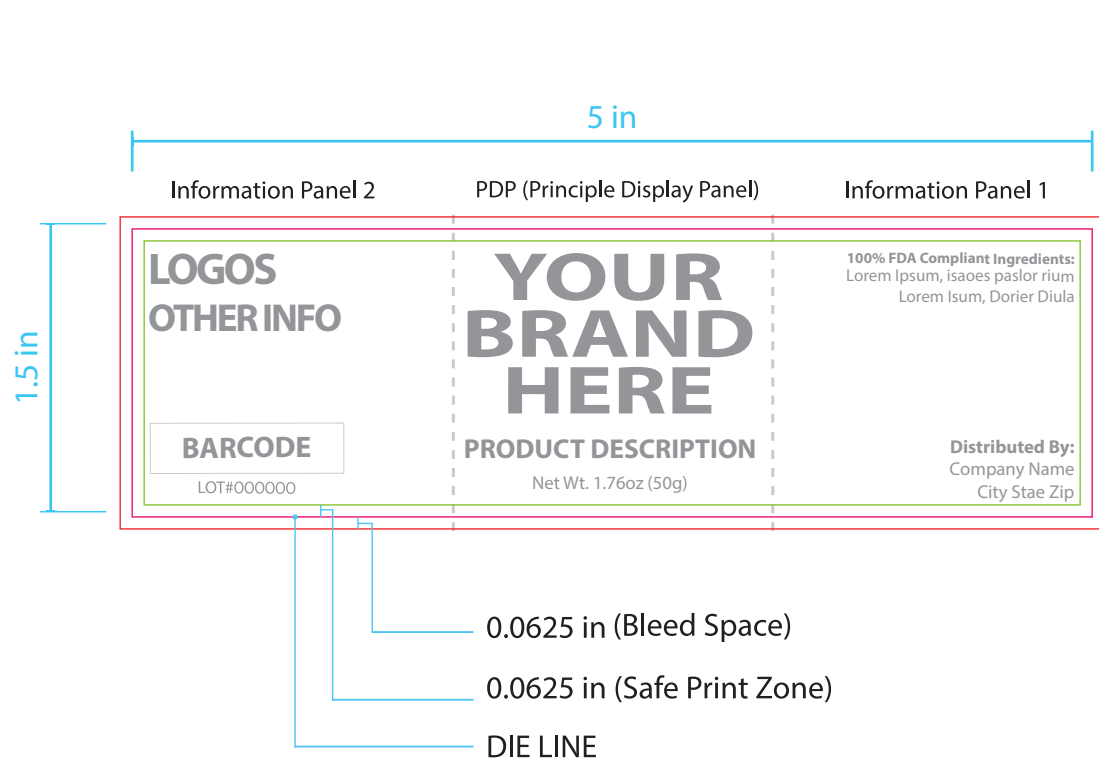
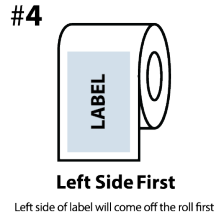
Left Side First

Left side of label will come off the roll first

LOGOS OTHER INFO	YOUR BRAND HERE	100% FDA Compliant Ingredients: Lorem Ipsum, isaoes paslor rium Lorem Isum, Dorier Diula
BARCODE LOT#000000	PRODUCT DESCRIPTION Net Wt. 1.59oz (45g)	Distributed By: Company Name City Stae Zip

STANDARD 1.5" x 5" DIELINE (50g Jar)

- BLEED
- DIELINE
- FOLD LINE
- SAFE ZONE
- SEAL AREA
- BLANK AREA

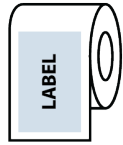


Rendered Label

STANDARD 1.5" x 5" DIELINE (50g Jar)



#4

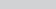







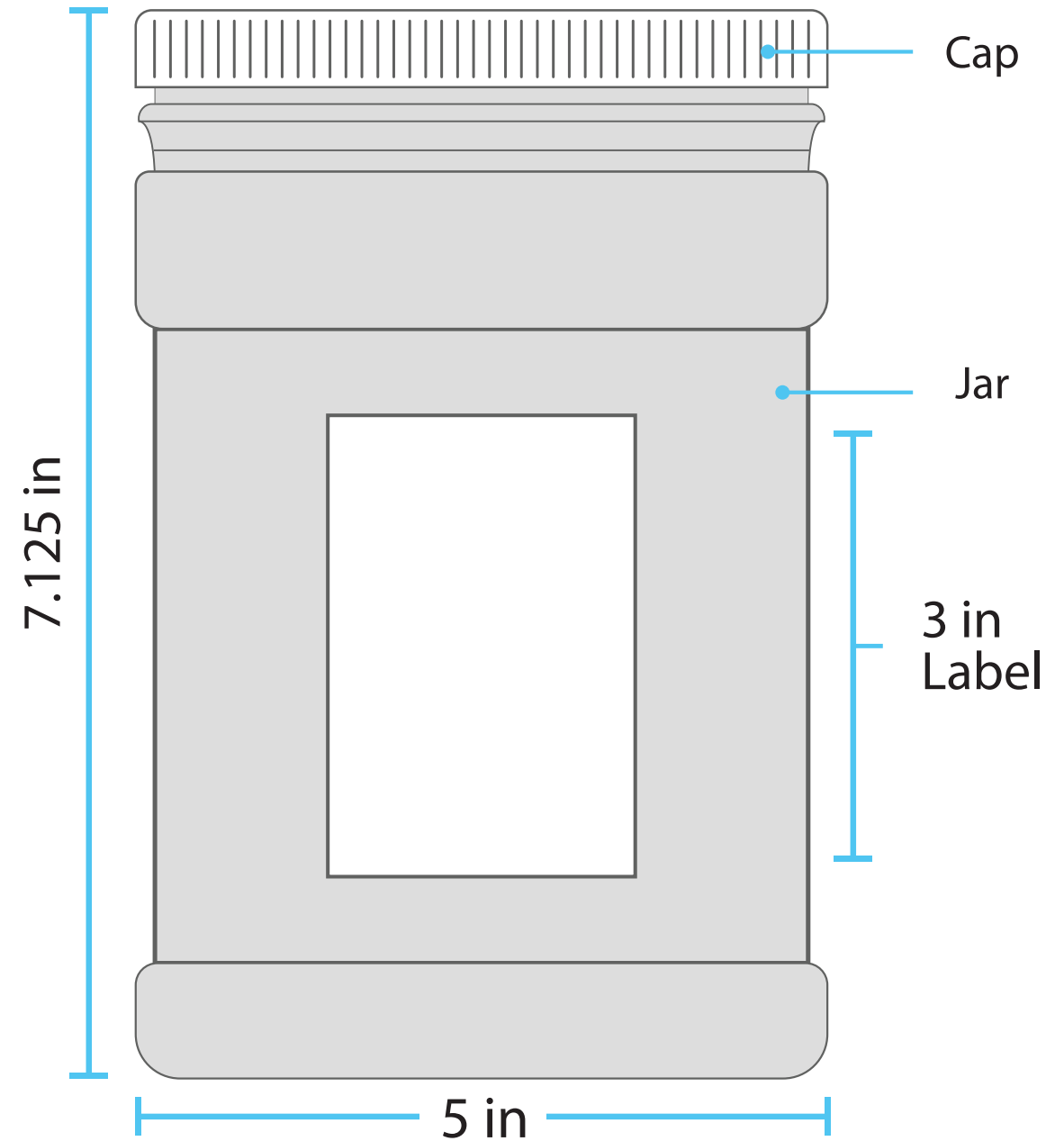
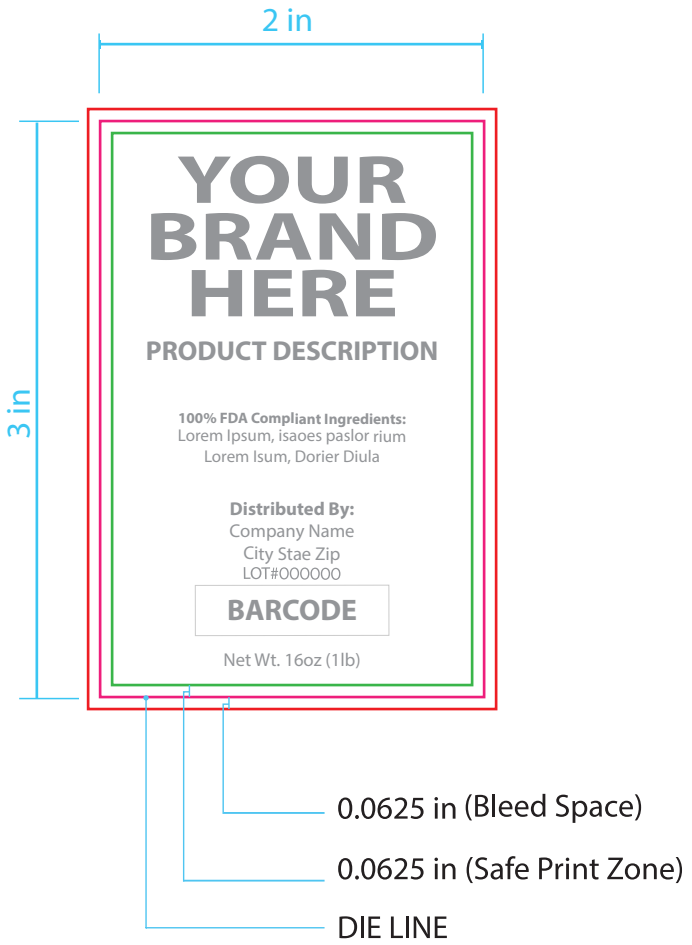
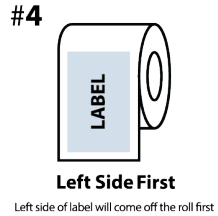
Left Side First

Left side of label will come off the roll first



STANDARD 3" x 2" LABEL DIELINE (1lb Container)

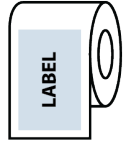
- BLEED 
- DIELINE 
- FOLD LINE 
- SAFE ZONE 
- SEAL AREA 
- BLANK AREA 



STANDARD 3" x 2" LABEL DIELINE (1lb Container)

- BLEED 
- DIELINE 
- FOLD LINE 
- SAFE ZONE 
- SEAL AREA 
- BLANK AREA 

#4



Left Side First

Left side of label will come off the roll first

**YOUR
BRAND
HERE**

PRODUCT DESCRIPTION

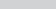

100% FDA Compliant Ingredients:
Lorem Ipsum, isaoes paslor rium
Lorem lsum, Dorier Diula

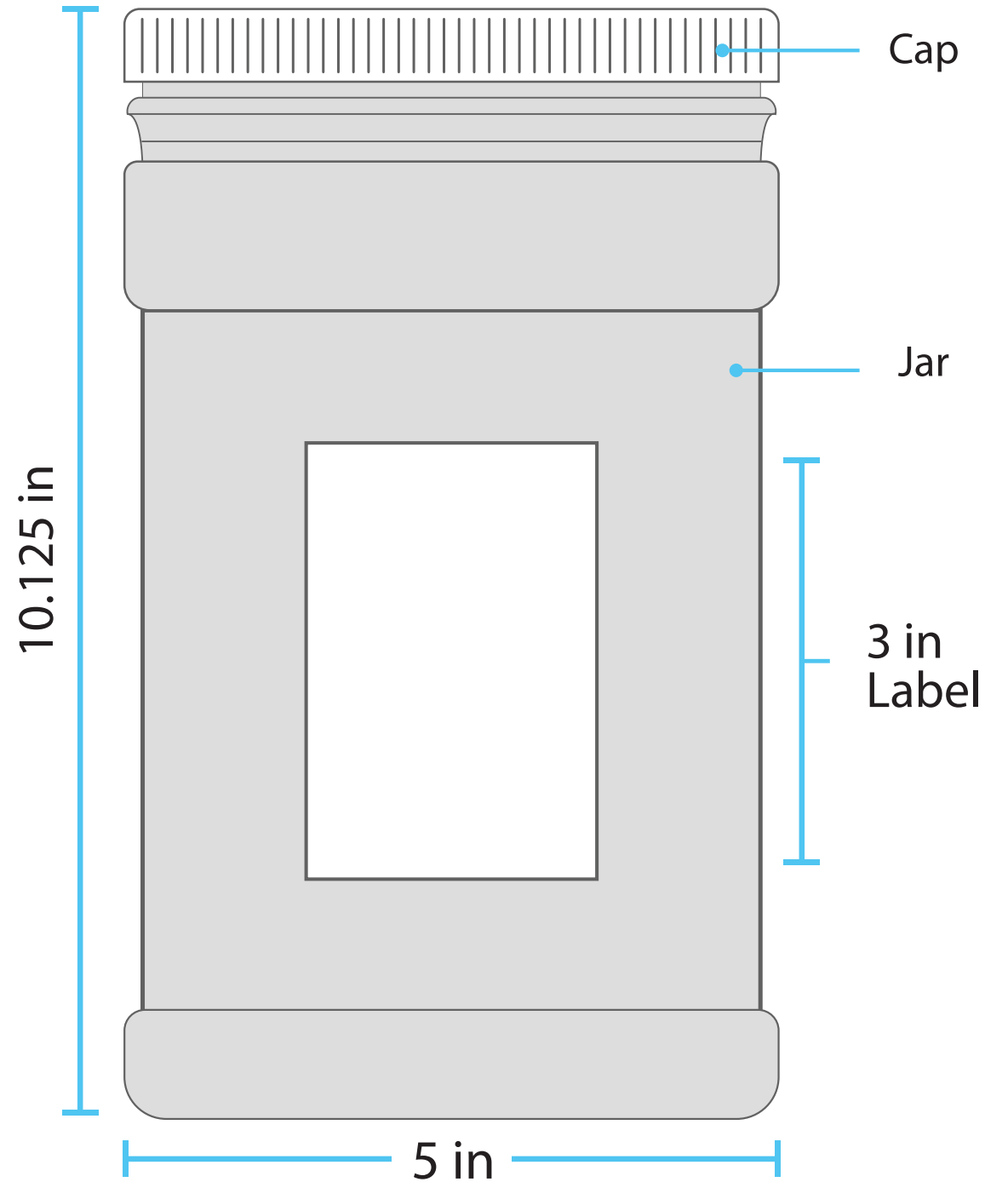
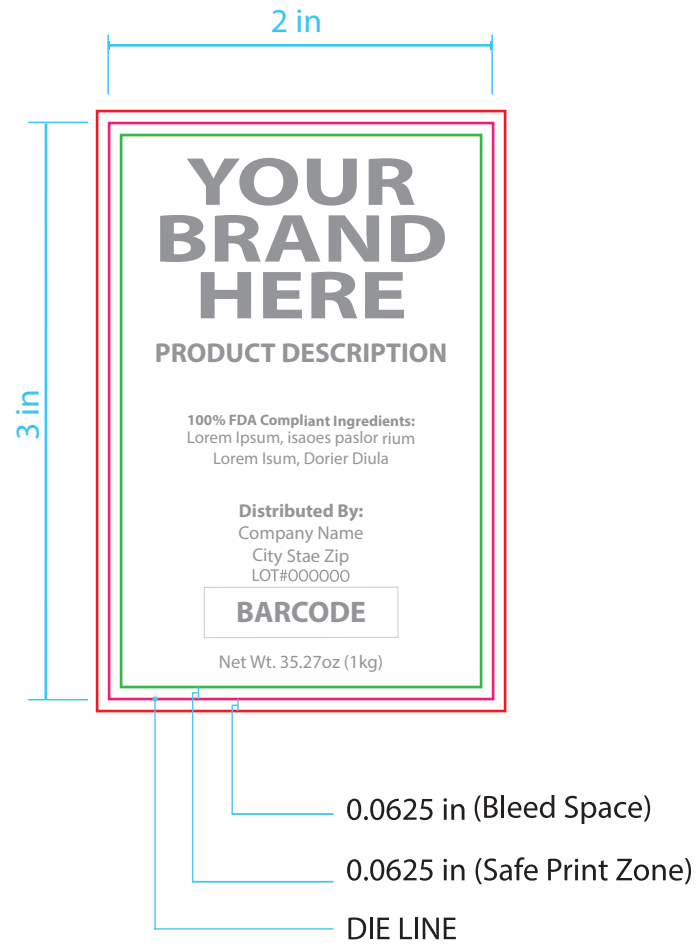
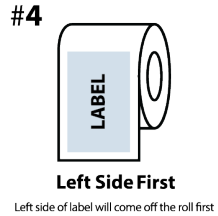
Distributed By:
Company Name
City Stae Zip
LOT#000000

BARCODE

Net Wt. 16oz (1lb)

STANDARD 3" x 2" LABEL DIELINE (1kg Container)

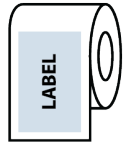
- BLEED 
- DIELINE 
- FOLD LINE 
- SAFE ZONE 
- SEAL AREA 
- BLANK AREA 



STANDARD 3" x 2" LABEL DIELINE (1kg Container)



#4


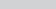


Left Side First

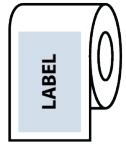
Left side of label will come off the roll first



STANDARD 4" x 4" LABEL DIELINE (4oz Container)

- BLEED 
- DIELINE 
- FOLD LINE 
- SAFE ZONE 
- SEAL AREA 
- BLANK AREA 

#4



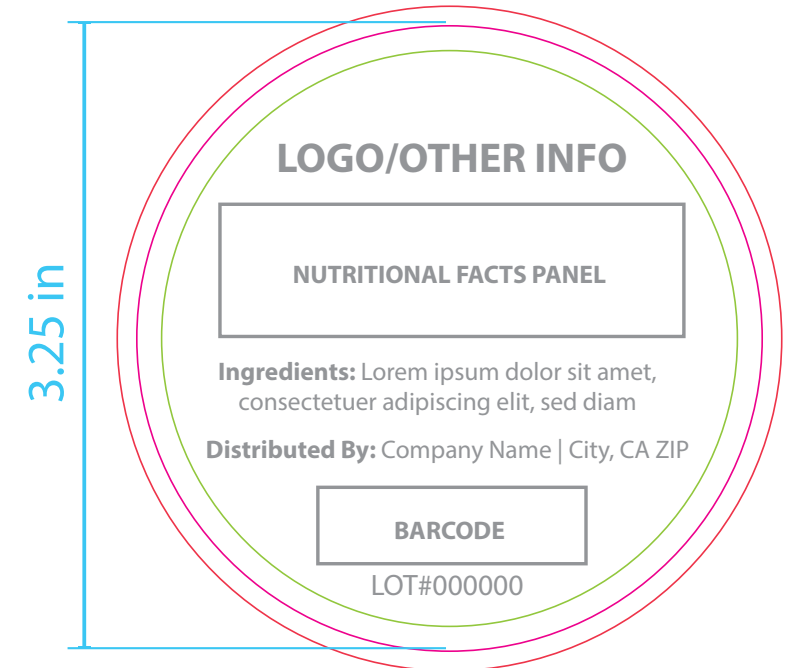
Left Side First

Left side of label will come off the roll first

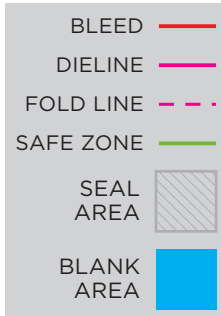
FRONT



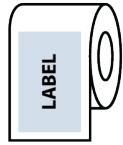
BACK



STANDARD 4" x 4" LABEL DIELINE (4oz Container)



#4



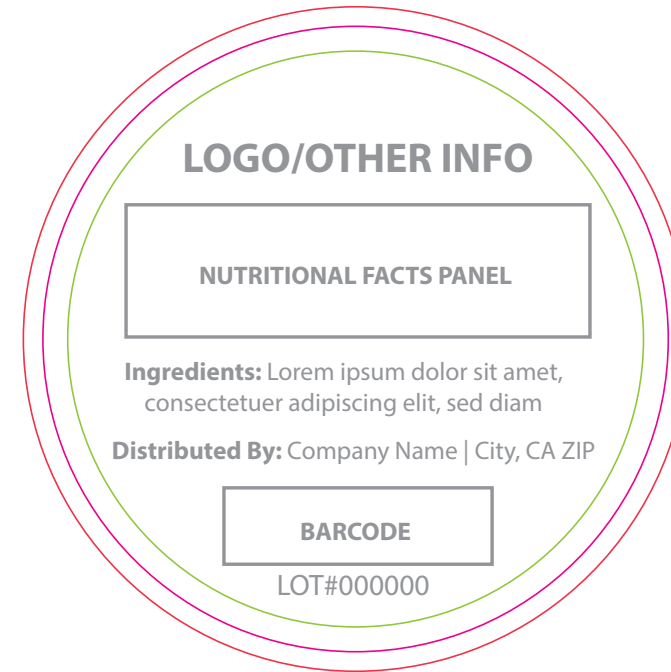
Left Side First

Left side of label will come off the roll first

FRONT



BACK

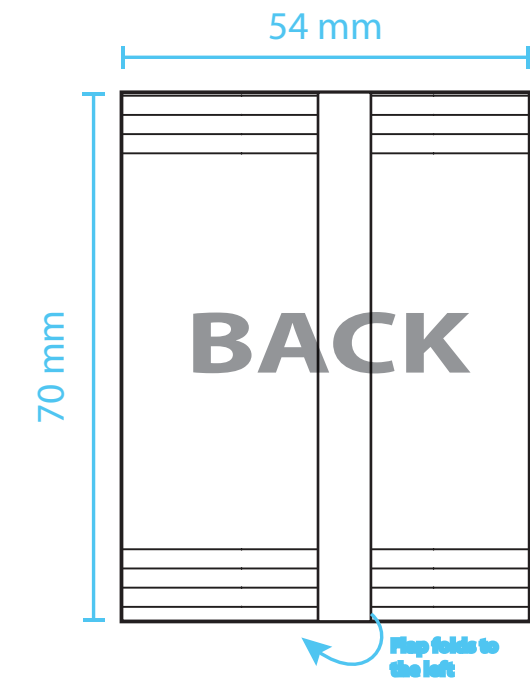
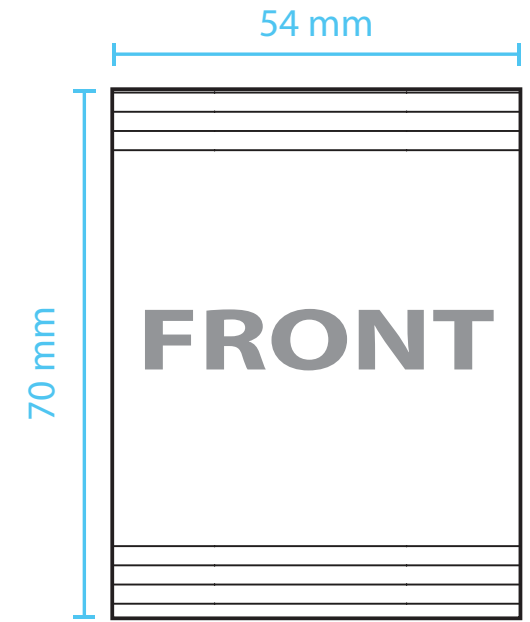
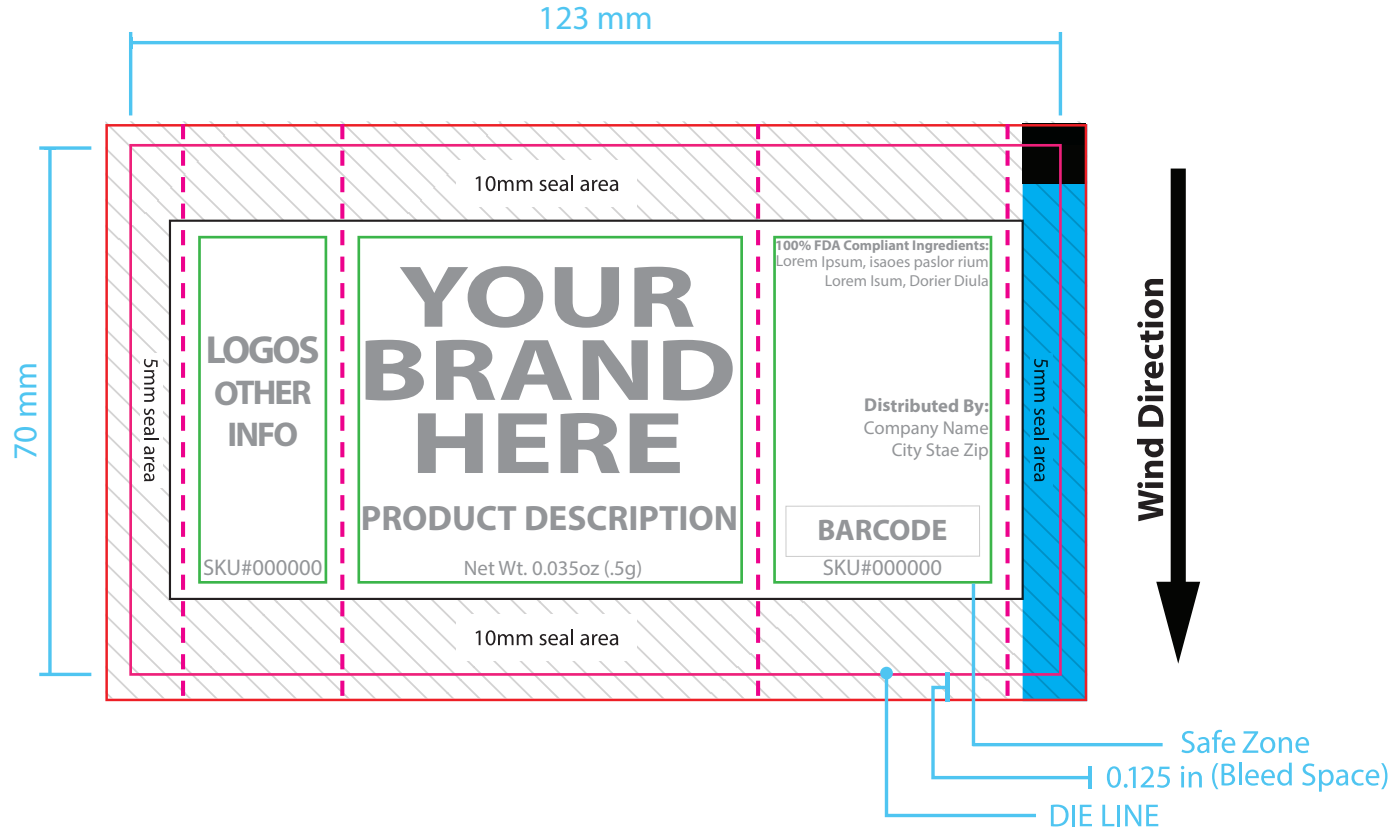


STANDARD SACHET DIELINE (70mm x 123mm)


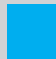
- BLEED
- DIELINE
- FOLD LINE
- SAFE ZONE
- SEAL AREA
- BLANK AREA

#2

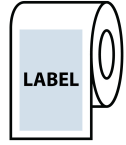
Bottom First
Bottom of label will come off the roll first



STANDARD SACHET DIELINE (70mm x 123mm)

- BLEED 
- DIELINE 
- FOLD LINE 
- SAFE ZONE 
- SEAL AREA 
- BLANK AREA 

#2



Bottom First

Bottom of label will come off the roll first



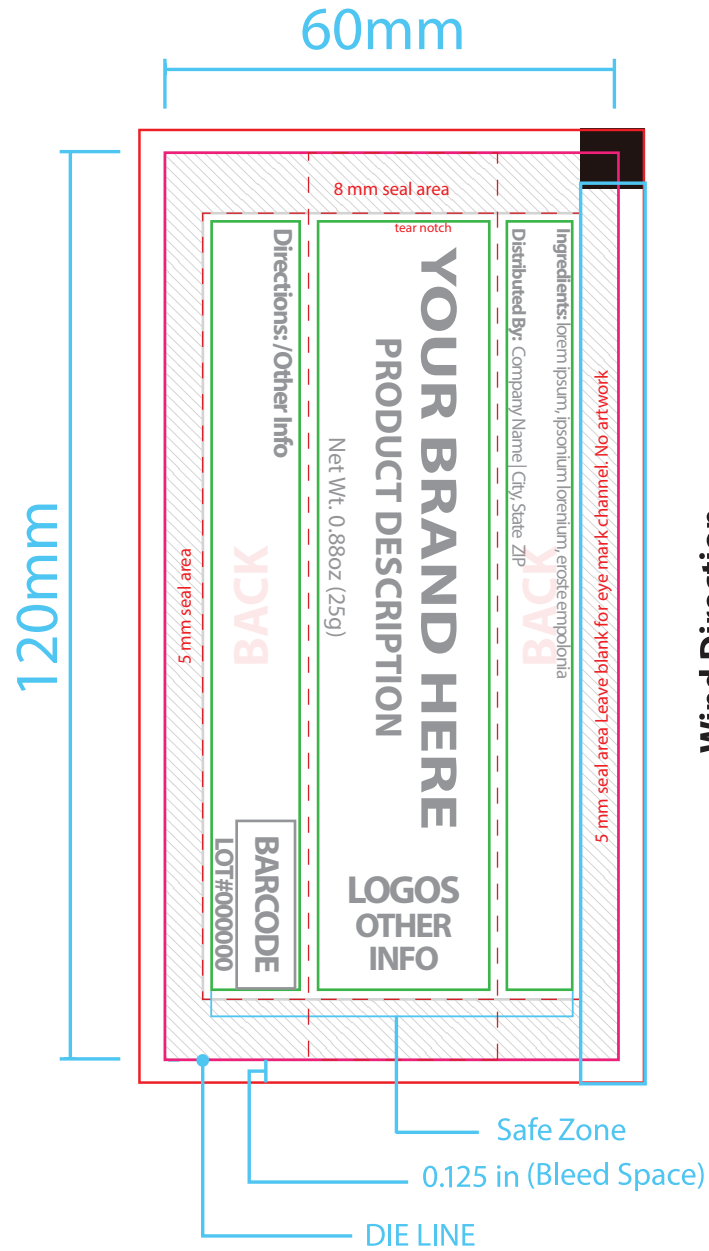
Wind Direction

STANDARD STICK PACK DIELINE (60mm x 120mm)

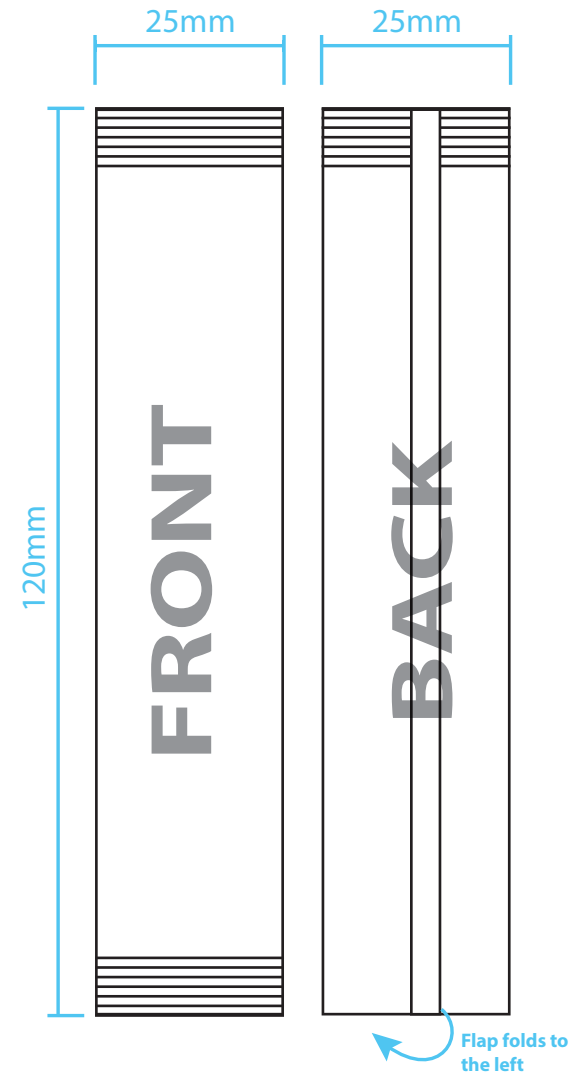
- BLEED —
- DIELINE —
- FOLD LINE - - -
- SAFE ZONE —
- SEAL AREA
- BLANK AREA

#3

Right Side First
Right side of label will come off the roll first



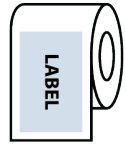
Wind Direction



STANDARD STICK PACK DIELINE (60mm x 120mm)

- BLEED 
- DIELINE 
- FOLD LINE 
- SAFE ZONE 
- SEAL AREA 
- BLANK AREA 

#3



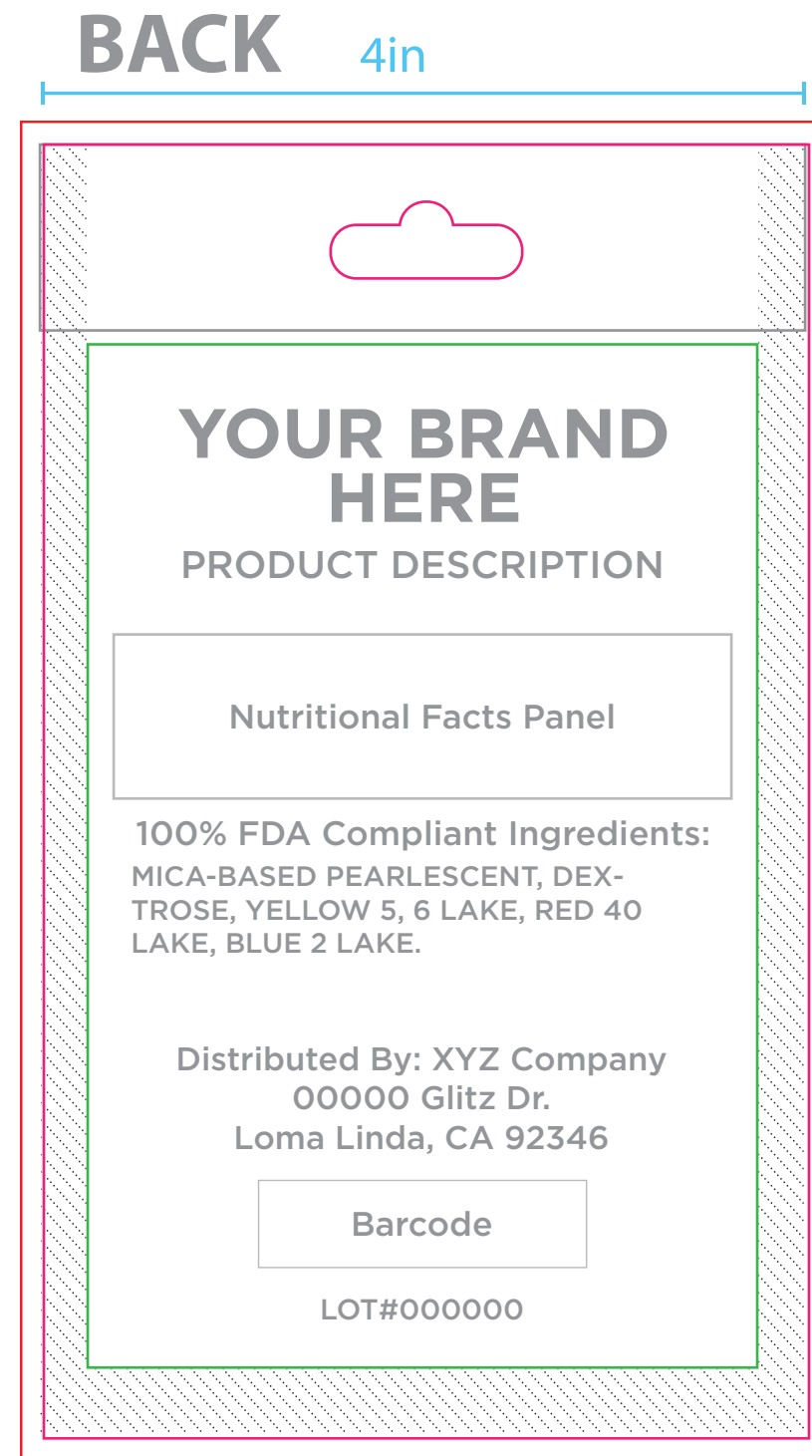
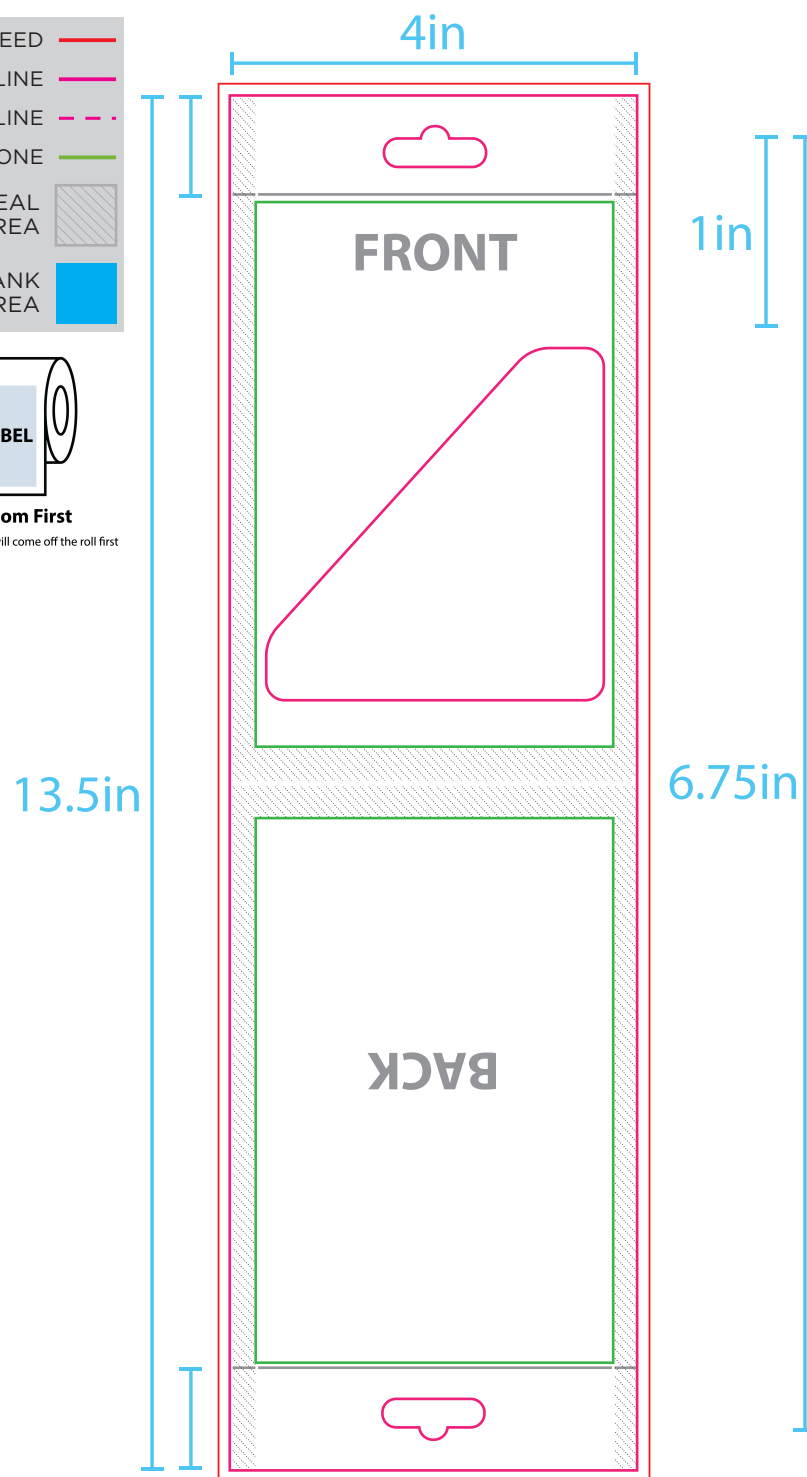
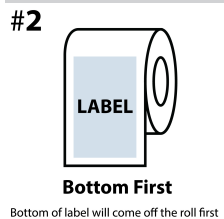
Right Side First

Right side of label will come off the roll first

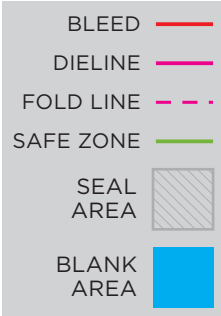


STANDARD STICK PACK POUCH DIELINE (6.75in x 4in)

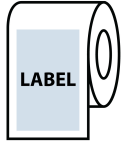
- BLEED
- DIELINE
- FOLD LINE
- SAFE ZONE
- SEAL AREA
- BLANK AREA



STANDARD STICK PACK POUCH DIELINE (6.75in x 4in)



#2

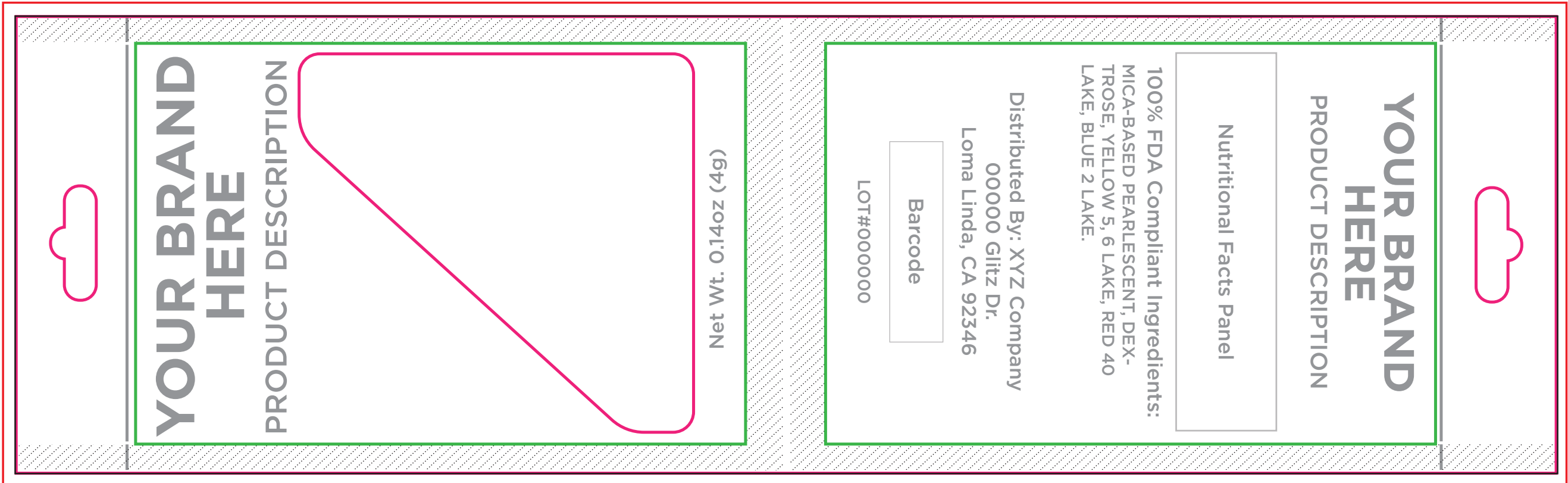


Bottom First

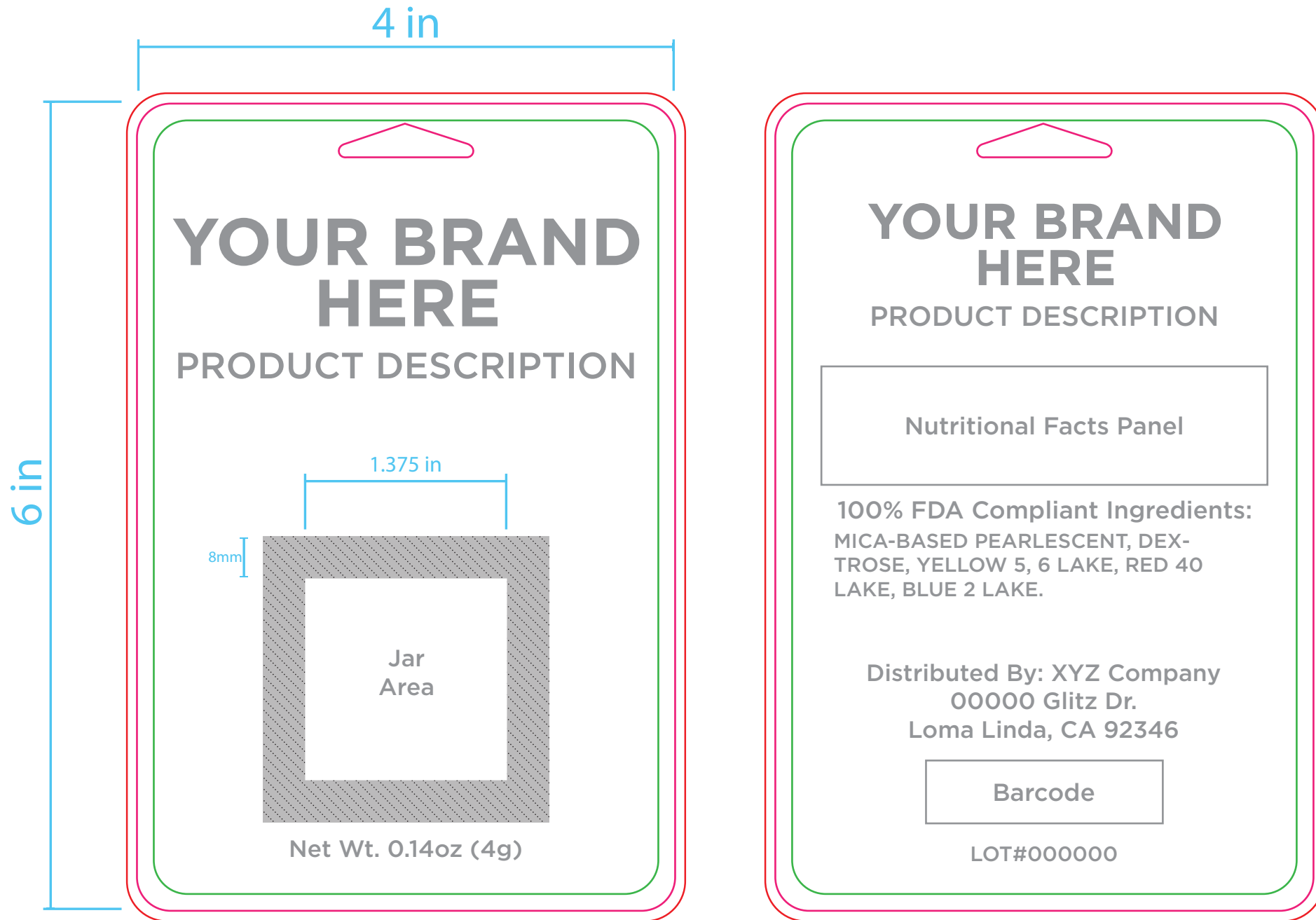
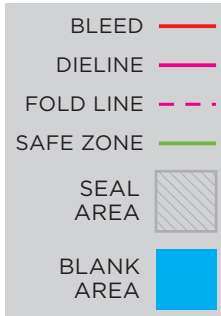
Bottom of label will come off the roll first

FRONT

BACK



STANDARD 4" x 6" -4G BLISTER PACK BACKER DIELINE



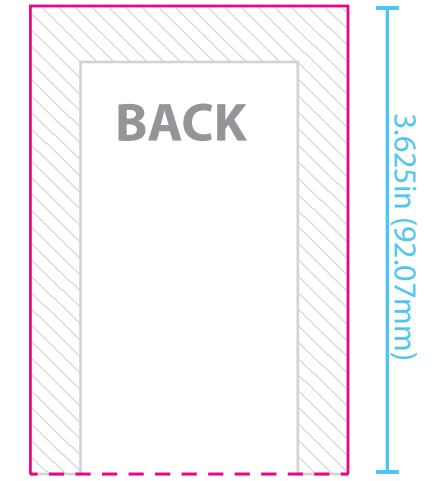
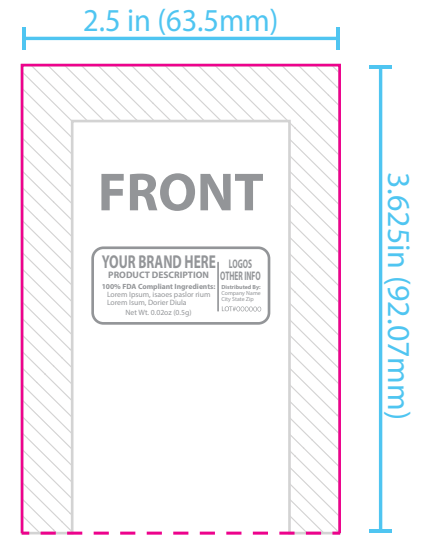
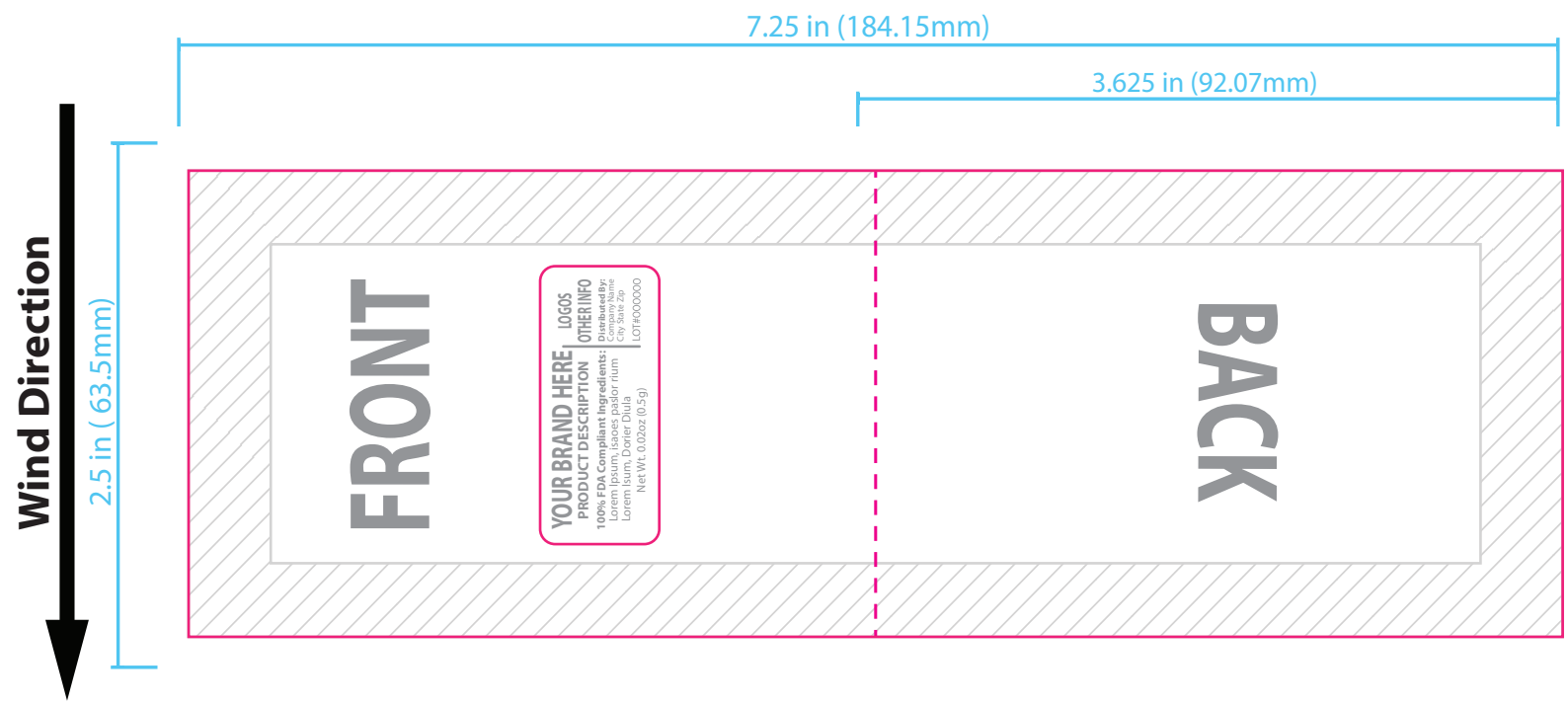
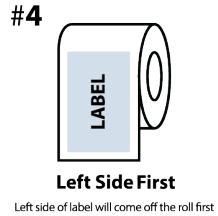
STANDARD 4" x 6" -4G BLISTER PACK BACKER DIELINE



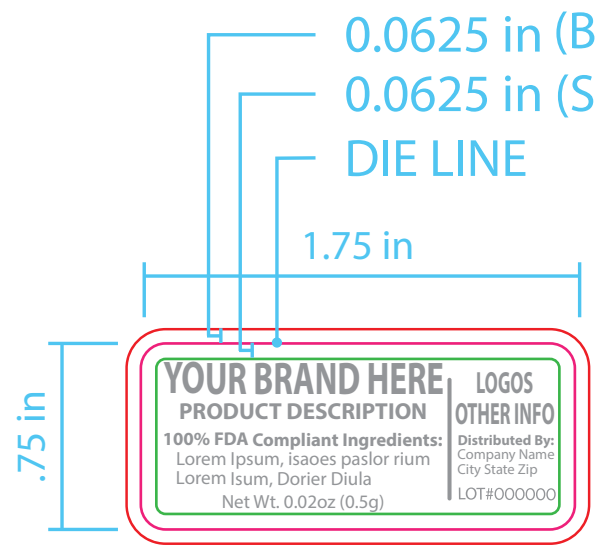
STANDARD CLEAR SAMPLE SACHET WITH LABEL DIELINE (Bag: 7.25in x 2.5in | Label: .75in x 1.75in)



- BLEED —
- DIELINE —
- FOLD LINE - - -
- SAFE ZONE —
- SEAL AREA
- BLANK AREA



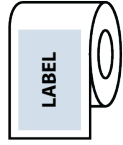
Folded/Sealed



STANDARD CLEAR SAMPLE SACHET WITH LABEL DIELINE (Bag: 7.25in x 2.5in | Label: .75in x 1.75in)



#4



Left Side First

Left side of label will come off the roll first



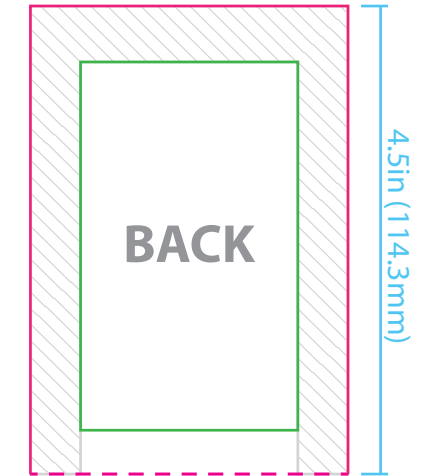
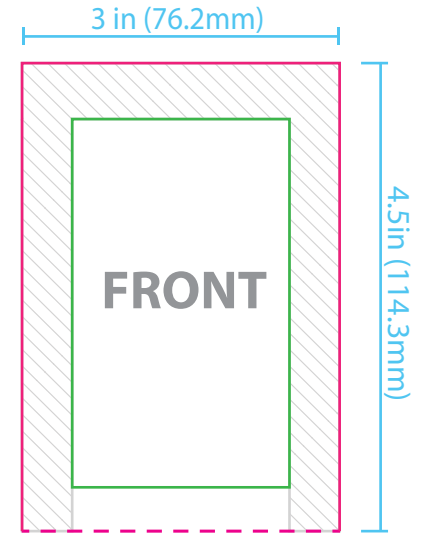
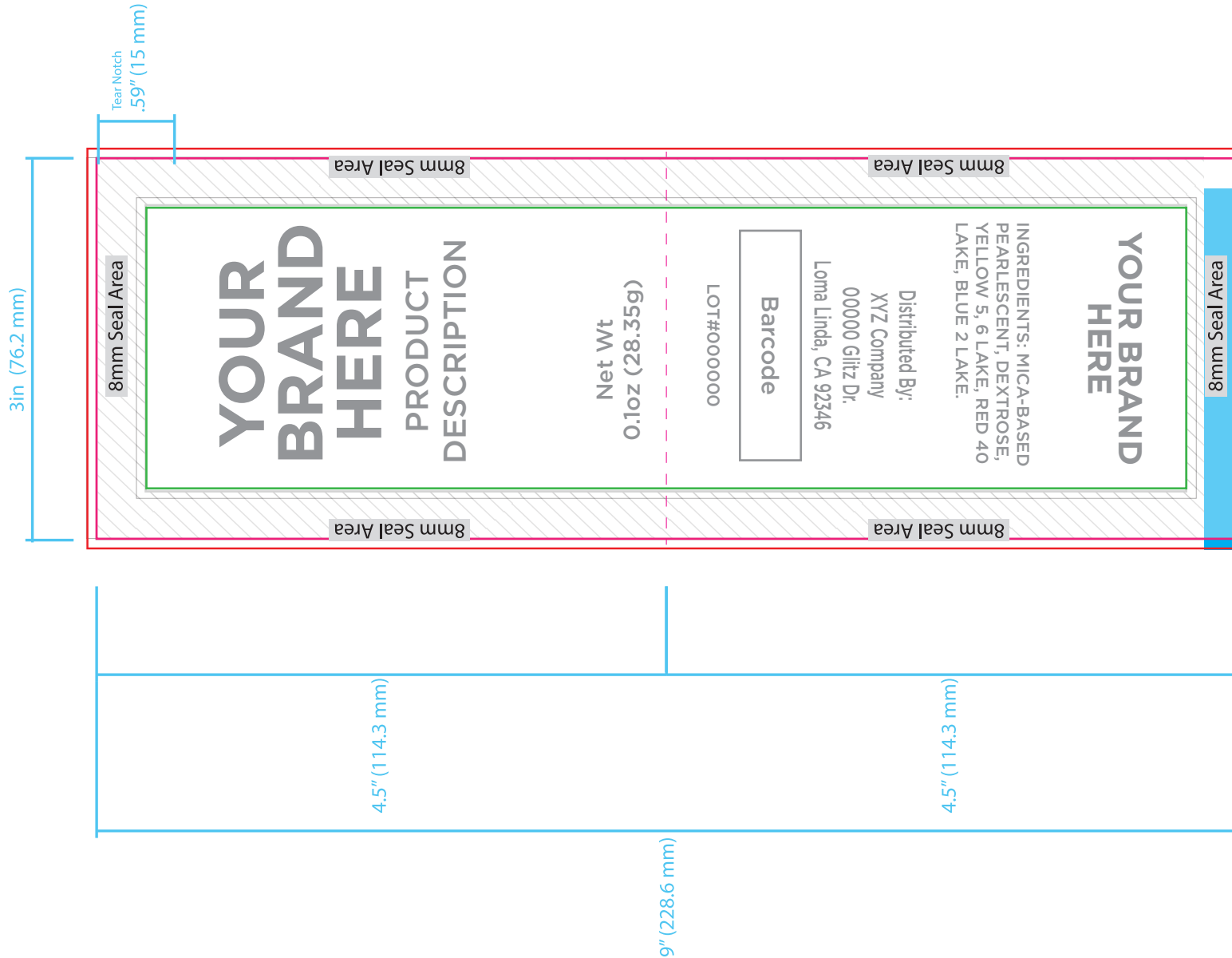
FOUR COLOR EASY TEAR SACHET DIELINE (3in x4.5in) *Clear Sachet Option Available

- BLEED
- DIELINE
- FOLD LINE
- SAFE ZONE
- SEAL AREA
- BLANK AREA

#4

Left Side First
Left side of label will come off the roll first

Wind Direction

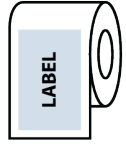


Folded/Sealed

FOUR COLOR EASY TEAR SACHET DIELINE (3in x4.5in) *Clear Sachet Option Available

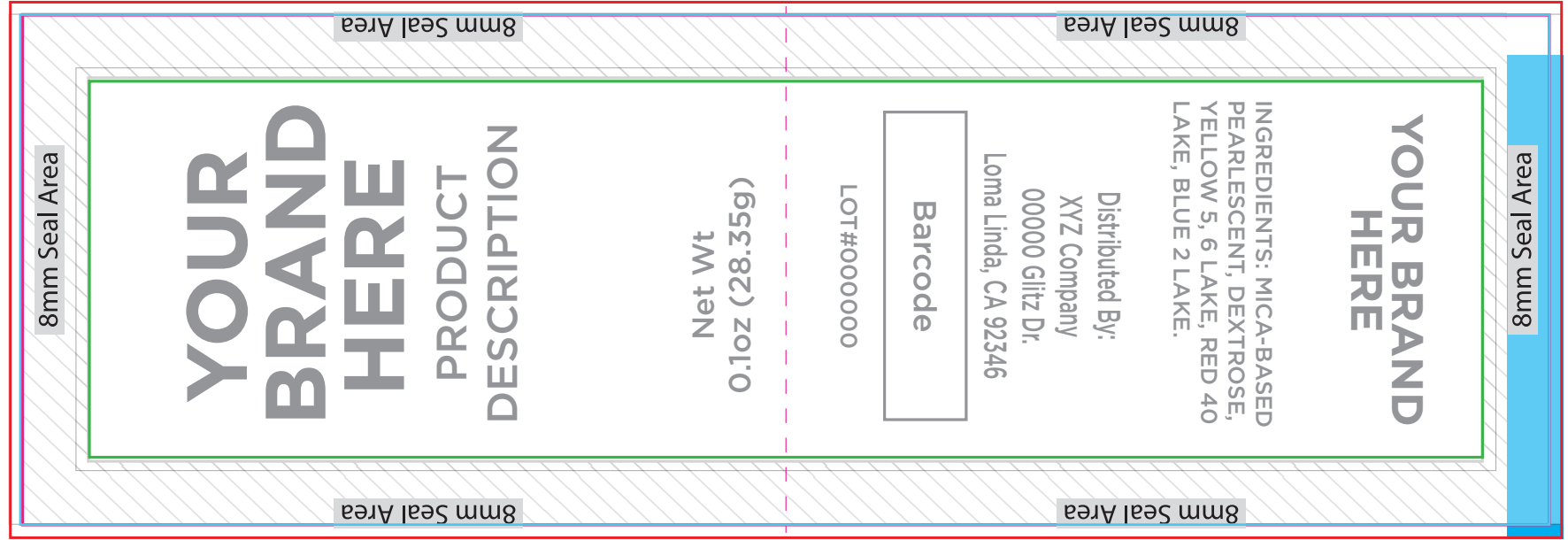
- BLEED
- DIELINE
- FOLD LINE
- SAFE ZONE
- SEAL AREA
- BLANK AREA

#4



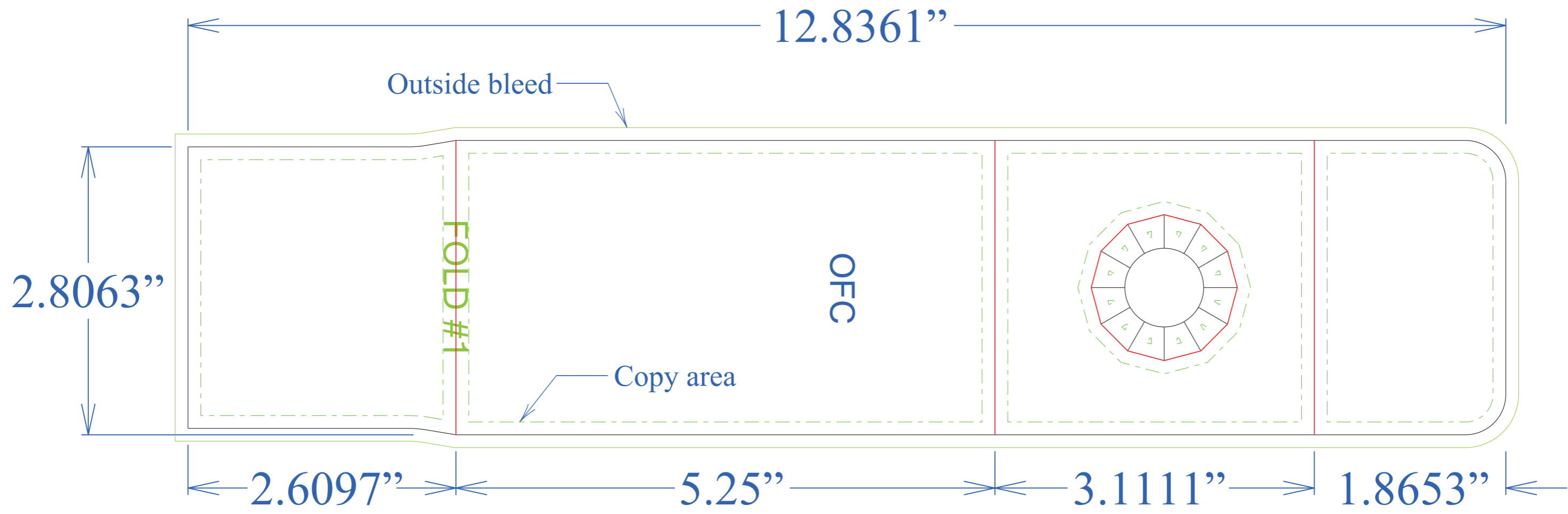
Left Side First

Left side of label will come off the roll first



STANDARD NECKER DIELINE (Stock type: 12pt C2S) OUTSIDE

CUT	—————
CREASE	—————
PARTIAL CUT	—————
PERF	- - - - -
EDGE OF SHEET	- - - - -
ANNOTATION	—————
GLUE/TAPE	—————
OUTSIDE KO	—————
INSIDE KO	- - - - -
BLEED	—————
SAFETY/COPY	- - - - -
GLUE ASSISTS	—————
STRIPPING	—————
DIEBOARD	—————



STANDARD NECKER DIELINE (Stock type: 12pt C2S) INSIDE

CUT	—————
CREASE	—————
PARTIAL CUT	—————
PERF	- - - - -
EDGE OF SHEET	- - - - -
ANNOTATION	—————
GLUE/TAPE	—————
OUTSIDE KO	—————
INSIDE KO	- - - - -
BLEED	—————
SAFETY/COPY	- - - - -
GLUE ASSISTS	—————
STRIPPING	—————
DIEBOARD	—————

