

## COCKTAIL RIMMING SUGAR TECHNICAL DATASHEET

### RIMMING SUGAR



**Appearance:** Rimming Sugars are very small pieces of edible confectionery used as a decoration for rimming beverages. The tiny candies are produced in a variety of colors and are generally used as a decorative element.

**Ingredients:** Each of our Rimming Sugars are made with different ingredients. Please refer to the ingredients technical data sheet below to see the specific ingredients for any particular rimming sugar type.

**Edible Glitter Biodegradable Statement:** All of our edible glitters are biodegradable. By utilizing certified synthetic and natural mica, we can ensure our edible glitters are free of PET plastic glitter. As such, our edible glitters are biodegradable, safe pigments with no concerns regarding landfill, waste or waterways. Please note, most "claimed" edible glitters on the market may not be biodegradable, and our biodegradable food safety statement is only specific to the edible glitter products manufactured and produced by Brew Glitter®

#### Additional Information:

**Stability:** Store in tightly sealed containers in a cool, dry, dark place.

**Storage:** When stored under the proper conditions, initial product strength and color hue should be maintained.

**Shelf Life:** Minimum of 36 months from date of manufacture.

**Allergens Statement:** Bakell, LLC has an established, documented, and thorough Internal Allergen Control Plan in place. All ingredients which are considered "Known Allergens" by the FDA are listed on our product ingredient statements where applicable. These ingredients are segregated in our warehouse and each container is clearly marked with a large label to indicate the contents are considered "Known Allergens".

**GMO Status:** NON-GMO

**Vegan Status:** Our Edible Dusts & Glitters are suitable for Vegan & Vegetarian diets

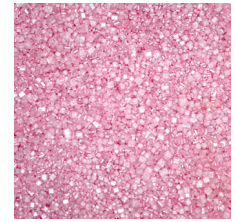
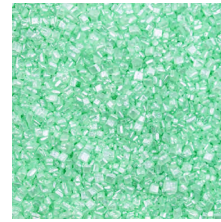
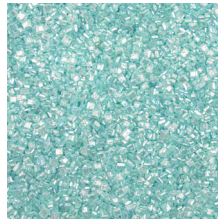
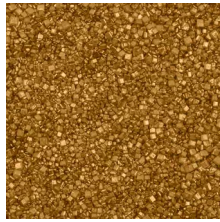
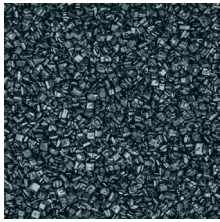
**Known Allergens:** At this time, the ONLY known major allergen used in any of Bakell's edible products is FD&C YELLOW #5 & YELLOW #6 Used in a number of our Food Color products (primarily Yellow, Green, Teal and Brown shades) A very small percentage of the general population has a "sensitivity" to FD&C Yellow #5 & YELLOW #6; Bakell® products that contain FD&C Yellow #5 & YELLOW #6 will have it clearly stated on the ingredient statement and all documentation. However, there are no Peanuts, Tree Nuts or any of their derivatives stored on the premises. Please note that some of our sprinkles contain soy lecithin, which is different than a soybean ingredient, soy lecithin is a lipid derivative of soy that contains only trace amounts of soy proteins (i.e. 100-500 ppm) from highly processed soy oil. Most allergists agree that soy lecithin, in many cases, does not contain sufficient soy protein residues to provoke allergic reactions in the majority of soy-allergic consumers; however, it should be noted that soy lecithin is an ingredient in some of the sprinkles that we offer, and should be used at the consumers discretion and sensitivity to the soy ingredient.

**Allergens Not Present:** The following "Known Allergens" are NOT present in any products formulated, distributed or sold by Bakell, LLC: Milk, Eggs, Peanuts, Tree Nuts, Fish, Shellfish and/or Wheat. That is not to say these ingredients may not be on the premises during manufacturing and processing, however the products Bakell produces and offers does not carry these products within the ingredients. Furthermore, this is to certify that our sprinkles line supplied by Bakell LLC, do not contain or consist of any Allergens like Milk or Milk derivatives, Egg or Egg derivatives, Soybean or Soybean derivatives, Peanuts or Peanut derivatives, Tree nuts or Tree nut derivatives, Grains or Grain derivatives, Fish or Seafood and their derivatives, Seed or Seed derivatives and any Sensitizers and have not been in contact with other materials which have been modified in some way. We also declare that the intermediates used for manufacturing of colors do not contain or consist of any allergens as above.

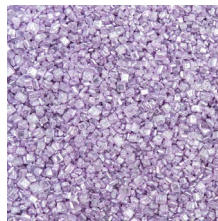
**Allergen Asterik:** Please note that equipment used in manufacturing does not handle or contain ingredients listed in this statement, but that does not mean the ingredients may not be on the premises throughout any part of the process.

The information within this document is furnished by Bakell.com (Bakell, LLC). It is believed to be accurate and represents the best information currently available. However, no warranty either expressed or implied is made with respect to said information and we assume no liability resulting from its use. Users should make their own investigations to determine the suitability of the information for their particular purposes. In no event shall Bakell.com. be liable for any claims, losses, or damages of any third party or for lost profits or any special, indirect, incidental, consequential or exemplary damages, howsoever arising even if Bakell, LLC. has been advised of the possibility of such damages.

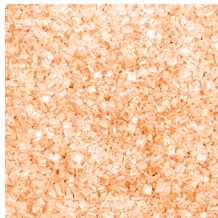
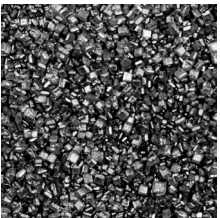
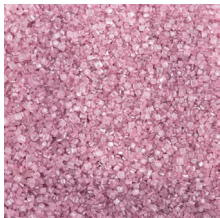
### Rimming Sugar Ingredients Chart



<p><b>Silver Pearl</b> CRS104</p>	<p><b>Gold Pearl</b> CRS109</p>	<p><b>Light Blue Pearl</b> CRS107</p>	<p><b>Mint Green Pearl</b> CRS105</p>	<p><b>Pink Pearl</b> CRS103</p>
<p>Ingredients: Sugar, Water, Carnauba Wax, Yellow 5, Blue 1, Red 40, Mica-Based Pearlescent.</p>	<p>Ingredients: Sugar, Water, Carnauba Wax, Caramel I, Yellow 5, Red 40, Mica-Based Pearlescent.</p>	<p>Ingredients: Sugar, Water, Carnauba Wax, Blue 1, Mica-Based Pearlescent.</p>	<p>Ingredients: Sugar, Water, Carnauba Wax, Yellow 5, Blue 1, Mica-Based Pearlescent.</p>	<p>Ingredients: Sugar, Mica-Based Pearlescent, Shellac, Carnauba Wax, Magnesium Stearate, Corn Starch, Silicon Oxide, Blue 1.</p>



<p><b>White Pearl</b> CRS102</p>	<p><b>Red Pearl</b> CRS100</p>	<p><b>Purple Pearl</b> CRS101</p>	<p><b>Yellow Pearl</b> CRS106</p>	<p><b>Green</b> CRS108</p>
<p>Ingredients: Sugar, Water, Carnauba Wax, Mica-Based Pearlescent.</p>	<p>Ingredients: Sugar, Water, Carnauba Wax, Red 40, Mica-Based Pearlescent.</p>	<p>Ingredients: Sugar, Mica-Based Pearlescent, Shellac, Carnauba Wax, Magnesium Stearate, Corn Starch, Silicon Oxide, Red 3, Blue 1.</p>	<p>Ingredients: Sugar, Water, Carnauba Wax, Yellow 5, Mica-Based Pearlescent.</p>	<p>Ingredients: Sugar, Water, Carnauba Wax, Yellow 5, Blue 1.</p>



<p><b>Rose Gold Pearl</b> CRS110</p>	<p><b>Black</b> CRS111</p>	<p><b>Peach</b> CRS112</p>
<p>Ingredients: Sugar, Mica-Based Pearlescent, Shellac, Carnauba Wax, Magnesium Stearate, Corn Starch, Silicon Oxide, Yellow 5, Red 40, Red 3, Blue 1.</p>	<p>Ingredients: Sugar, Mica Pearlescent, Pigments, Shellac, Red 40, Carnauba Wax, Red 3, Yellow 6, Magnesium Stearate, Corn Starch, Silicon Oxide.</p>	<p>Ingredients: Sugar, Yellow 5, Titanium Dioxide, Mica-Based Pearlescent, Shellac, Carnauba Wax</p>