



LANDSCAPERS GUIDE TO NATIVE PLANTS

Provide food,
shelter, and nectar
sources

Differentiate your Business

Let customers know you are in tune to the eco-friendly lifestyle. Instead of just installing a landscape, give your customers a landscape that makes a better world.

Benefits for Landscapers

- Native plants require less water and maintenance
- Fewer disease problems, the plants are genetically built to thrive in our landscape
- Our tags teach customers about all the benefits native plants have to offer
- Your customers will feel great knowing they are supporting pollinators and helping the environment

Benefits of Native Plants

- **Provide food for wildlife** - foliage, nectar, pollen, berries, seeds and nuts
- **Create cover for wildlife** - Animals need cover from predators and protection from weather. Dense shrubs and evergreens can provide cover all year.
- **Provide a place to raise young** - When you create cover you're generally also creating a safe place for wildlife to raise their young. Meadows and perennial borders are great for butterflies to lay their eggs.
- **Tested, Tried and True!** - Native plants have evolved to flourish and be less susceptible to pests and diseases. They require less water, less fertilizer and less maintenance. American Beauties Native Plants® are native and they perform well in the landscape.

Are naturally
adapted to your
area

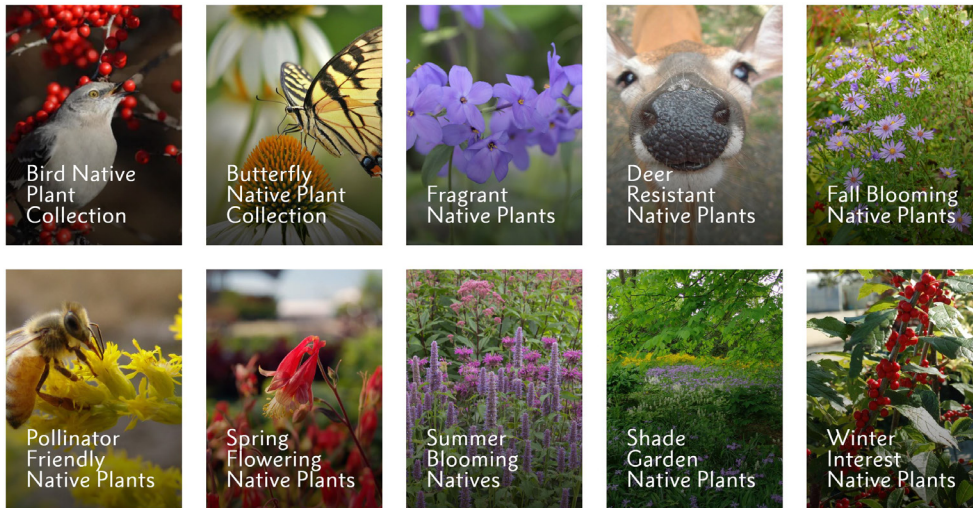
Attract and
support birds,
butterflies, and
beneficial
insects

Are low
maintenance with
few disease
problems

Solve your
landscape
problems
successfully

Have a positive
impact on our
environment

American Beauties Website Collections

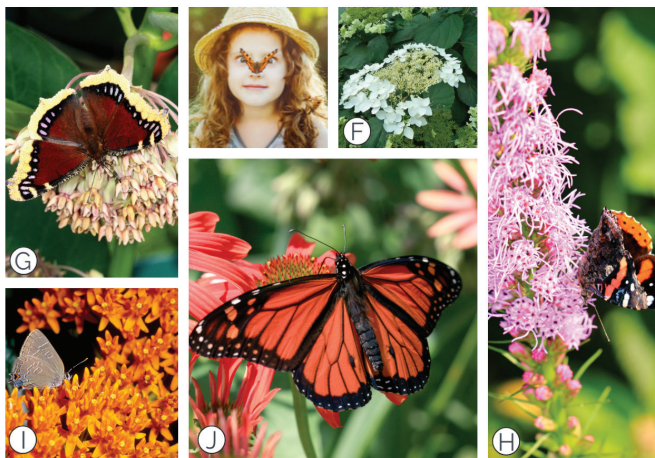


Check out abnativeplants.com for collections. Explore native plants by native habitat, the wildlife you would like to support, or a landscape problem that native plants can help solve - like native plants for shade or that are deer resistant!

Ready to start Planting?

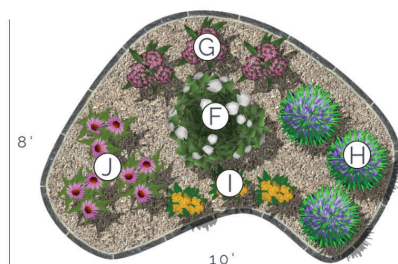
Check out some of our favorite American Beauties Native Plants® landscape plans below.

American Beauties Landscape Plans



American Beauties Native Plants® Full Sun Butterfly Garden

This summer blooming, sun loving garden design is packed full of bright blooms that are sure to attract lots of butterflies!

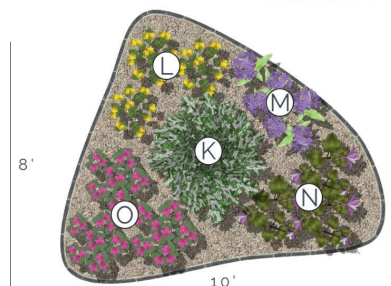


- (F) **Smooth Hydrangea**
Hydrangea arborescens
- (G) **Swamp Milkweed**
Asclepias incarnata
- (H) **Rough Blazing Star**
Liatris spicata
- (I) **Butterfly Weed**
Asclepias tuberosa
- (J) **Coneflower**
Echinacea purpurea



American Beauties Native Plants® Part Shade Butterfly Garden

A shaded, woodland garden with blooms from spring to fall. This simple garden is sure to get noticed by loads of butterflies!



- (K) **Sweetspire**
Itea virginica
- (L) **Green and Gold**
Chrysogonum virg.
- (M) **Woodland Phlox**
Phlox divaricata
- (N) **Eastern Columbine**
Aquilegia canadensis
- (O) **Turtlehead**
Chelone glabra

buds FOR birds



HOW TO ATTRACT BIRDS TO YOUR PORCH, PATIO OR GARDEN

Did you know birds help keep our ecological systems in balance? They pollinate plants, disperse seeds, scavenge carcasses and recycle nutrients back into the earth. What can you do to help? Follow these 3 simple tips and you can change the world on your porch, patio or in your garden.

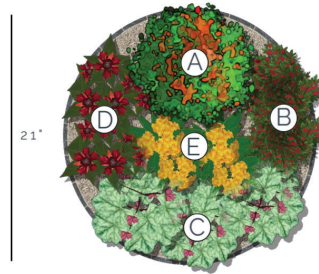
- 1 Choose native plants that support larval insects (such as caterpillars), a key food component to the native songbird life cycle.
- 2 Plant native trees and evergreens for nesting and cover
- 3 Provide a water source, such as a bird bath or plant saucer filled with water

Winterberry
Ilex verticillata



American Beauties Native Plants® Hummingbird Container Garden

Designed to be taller in the back, the honeysuckle will climb on a trellis or arbor. Place this container in full sun and watch the hummers come!

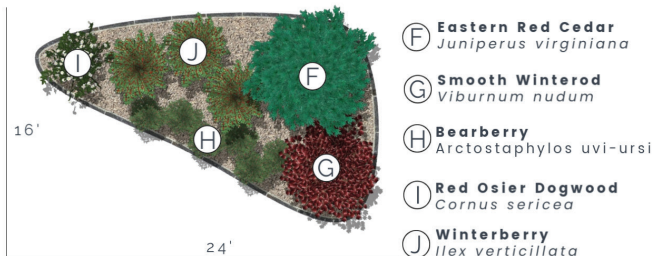


- (A) Honeysuckle
Lonicera sempervirens
- (B) Cardinal Flower
Lobelia cardinalis
- (C) Coral Bells
Heuchera americana
- (D) Bee Balm
Monarda didyma
- (E) Butterfly Weed
Asclepias tuberosa



American Beauties Native Plants® Berry Winter Bird Garden

This berry inspired garden is a winter buffet for our native feathered friends! This garden also offers year round interest with beautiful fall color, spring blooms and fabulous summer textures.

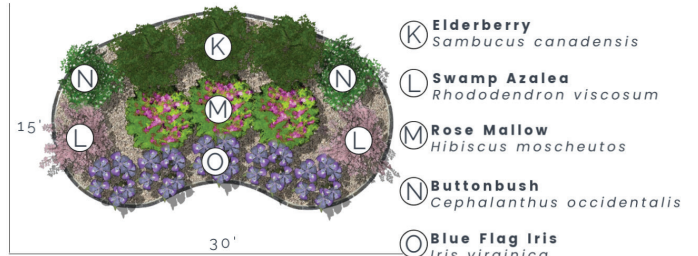


- (F) Eastern Red Cedar
Juniperus virginiana
- (G) Smooth Winterod
Viburnum nudum
- (H) Bearberry
Arctostaphylos uva-ursi
- (I) Red Osier Dogwood
Cornus sericea
- (J) Winterberry
Ilex verticillata



American Beauties Native Plants® Shady Rain Bird Garden

Do you have a wet, shady spot in your garden? Turn it into an oasis for birds with these low maintenance, water loving natives. With abundant food and cover, these native plants will allow your native birds to thrive.



- (K) Elderberry
Sambucus canadensis
- (L) Swamp Azalea
Rhododendron viscosum
- (M) Rose Mallow
Hibiscus moscheutos
- (N) Buttonbush
Cephalanthus occidentalis
- (O) Blue Flag Iris
Iris virginica

deer RESISTANT natives



IS IT POSSIBLE TO SUPPORT NATIVE POLLINATORS, BIRDS AND BUTTERFLIES IF I HAVE DEER IN MY YARD?

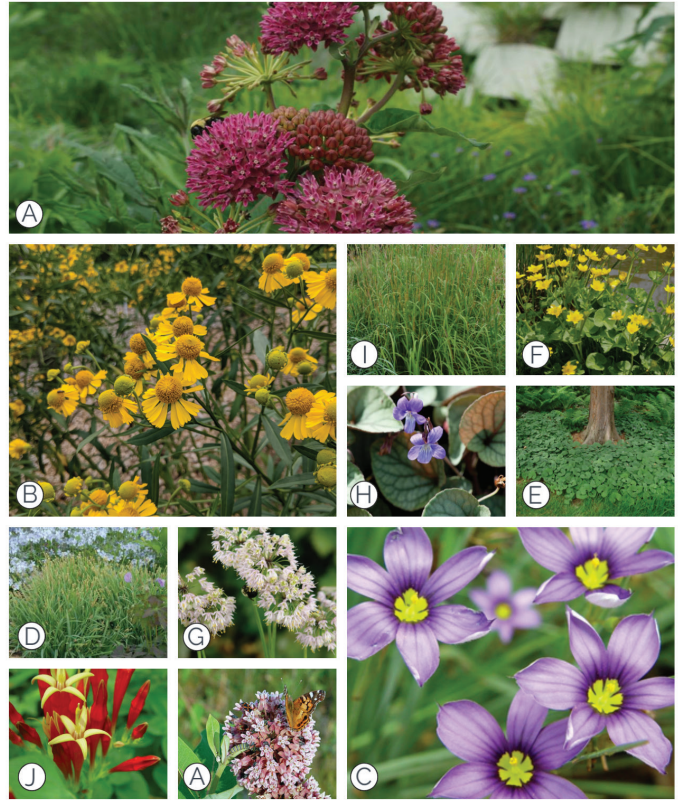
YES! While there is no such thing as "deer proof" plants, there are native plants that deer find undesirable and unpalatable. Keep in mind, if a deer is hungry enough, deer will still eat it. With our top 10 list of deer resistant native plants, you'll be more successful at keeping our four legged friends at bay.

- | | |
|---|--|
| (A) Milkweed
<i>Asclepias sp.</i> | (F) Marsh Marigold
<i>Caltha palustris</i> |
| (B) Helen's Flower
<i>Helenium autumnale</i> | (G) Nodding Onion
<i>Allium cernuum</i> |
| (C) Blue-Eyed Grass
<i>Sisyrinchium angustifolium</i> | (H) Prostrate Blue Violet
<i>Viola walteri</i> |
| (D) Sedge
<i>Carex sp.</i> | (I) Big Bluestem
<i>Andropogon gerardii</i> |
| (E) Canadian Wild Ginger
<i>Asarum canadensis</i> | (J) Indian Pink
<i>Spigelia mailandica</i> |



American Beauties Native Plants® Deer Resistant Collection

Our Top 10 Deer Resistant Perennials
See many more at abnativeplants.com



trees THAT ARE native



NATIVE TREES ARE VITAL TO OUR ECOSYSTEM

Did you know the #1 thing you can do to help support your native pollinators, butterflies and birds is plant a native tree? Native trees provide vital nesting material, shelter and food for local wildlife. Planting native trees also helps to sequester CO2 from our atmosphere. Native trees are low maintenance, relatively pest free and beautiful!



American Beauties Native Plants® Native Tree Collection

- | | |
|--|--|
| (A) Red Maple
<i>Acer rubrum</i> |  <p>AMERICAN BEAUTIES®
NATIVE
PLANTS</p> |
| (B) White Pine
<i>Pinus strobus</i> | |
| (C) Serviceberry
<i>Amelanchier canadensis</i> | |
| (D) Eastern Redbud
<i>Cercis canadensis</i> | |
| (E) Swamp White Oak
<i>Quercus bicolor</i> | |

SEE MORE AT WWW.ABNATIVEPLANTS.COM

