

LOOM SOLAR

LEARN SOLAR

WITH LOOM SOLAR

Join Online Through Video Conferencing

EVERY SATURDAY 10-11AM

On Google Meet

- Become a Solar Expert
- Learn & Earn Money

WATCH IT LIVE ON

 YouTube  [Linked in.](#)  [facebook.](#)



Table of Contents

- **Operation & Maintenance**
- **General Checks**
- **Specific Checks**

Operation & Maintenance

solar operation and maintenance are technical services required to ensure that the solar system gives the best possible generation after installation.

General checks

- 1.Ensure roof drainage is adequate, roof drains are not clogged and confirm that there are no signs of water pooling near the array**
- 2.Ensure roof penetrations (if any) are watertight**
- 3.Check for ground erosion near the footings of a ground mount system**
- 4.Confirm electrical enclosures are only accessible to authorized personnel**
- 5.Check for corrosion on the outside of enclosures and the racking system**
- 6.Check for cleanliness throughout the site to ensure that there is no debris in the inverter pad area or elsewhere**
- 7.Check for loose hanging wires in the array**
- 8.Check for signs of animal infestation under the array**

Specific checks

- 1 Frequency of cleaning**
- 2. Inverter**
- 3. Battery Inspection**
- 4. Earthing Resistance**
- 5. Protective Device**
- 6. MC4 Connectors**

Frequency of cleaning

It should be 2-3 times in a week.

Inverter

- 1. Inverter's air filter always neat & clean.**
- 2. Ensure its cooling fan working.**
- 3. Check if any Fault code if any fault occurs.**

Battery Inspection

Sometimes battery performance affected due any faulty Cell. It should be check timely.

Earthing

Earthing resistance will increase with time. It should be maintained below 3 Ohm

Protective Device

Sometimes SPD & Fuses burnt due to surge and overload.

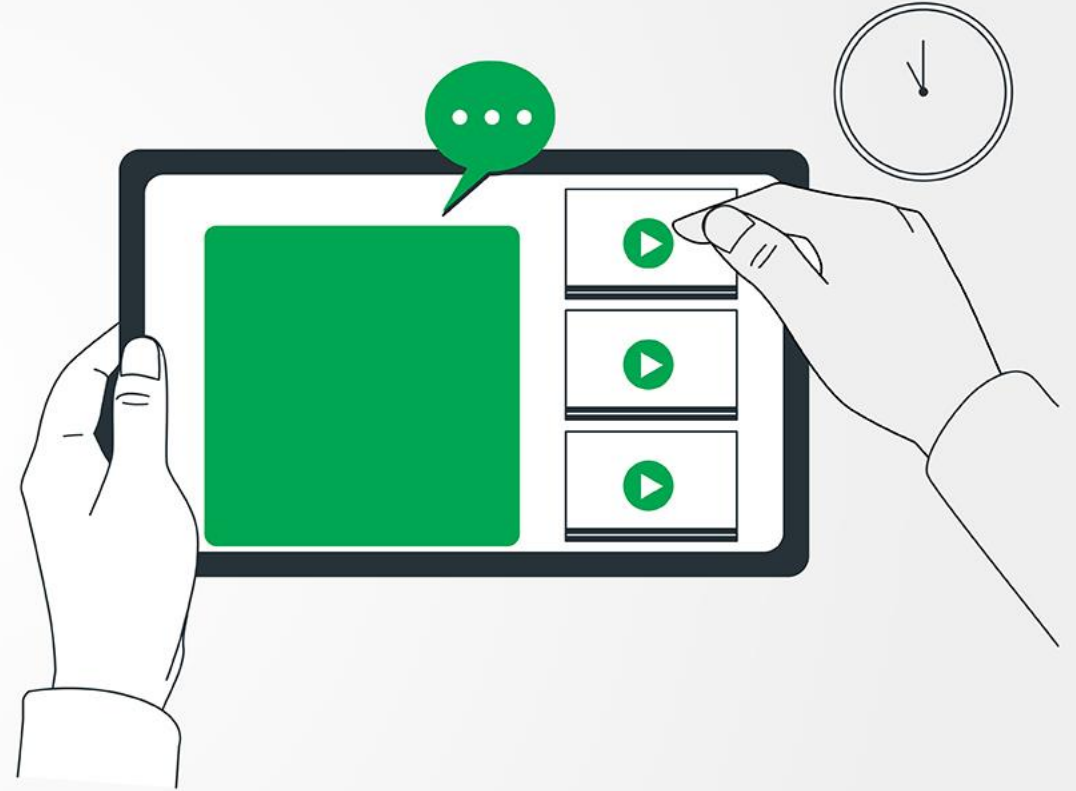
MC4 Connectors

Sometime MC4 Connectors melt due to overheat.

Thank you for attending the session with us

We will be coming back next saturday with new topic

www.loom solar.com





Now you can ask your Queries

Q & A Time

