

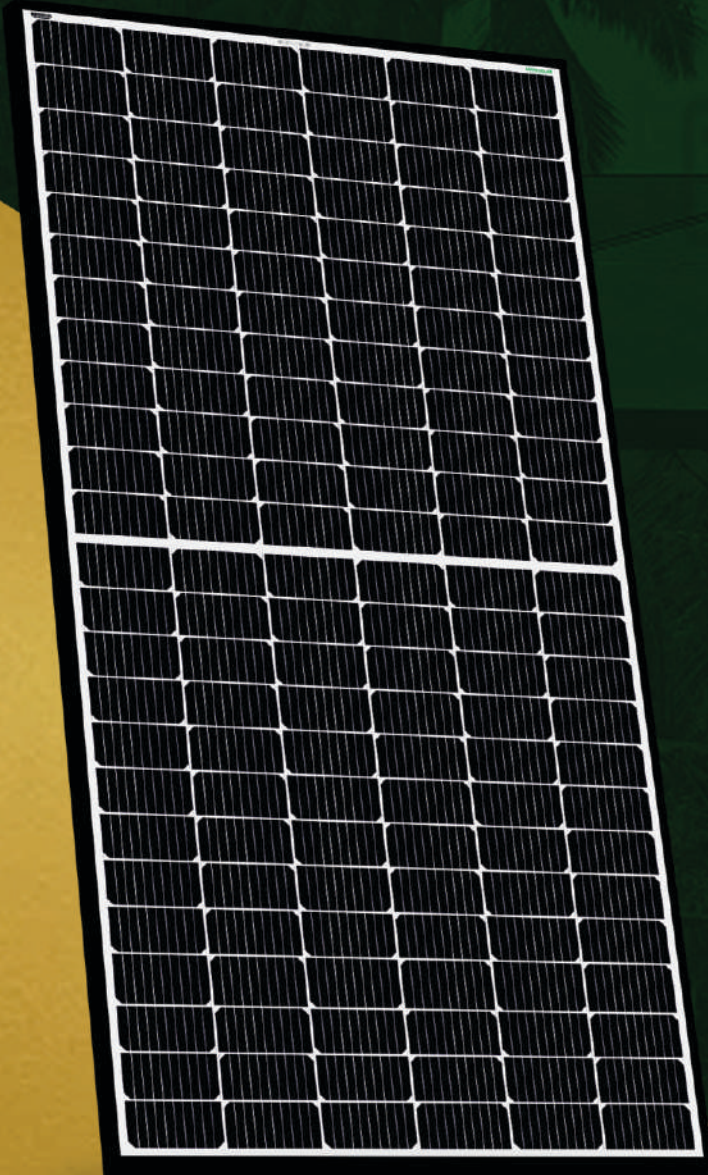
LOOM SOLAR

अपना घर अपनी बिजली

Super High **Efficiency** Solar Panel

Starting

10W - 545W



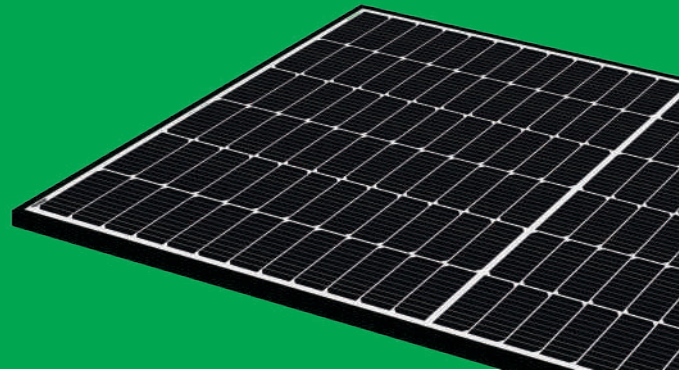
FOR
HOME



FOR
INDUSTRIES

SHARK 545

Mono Perc Solar Module



KEY FEATURES



Higher module conversion efficiency

Maximize limited space with high efficiency mono PERC cells
Half-cell design, lower R_s loss, lower hot spot temperature



Highly reliable due to stringent quality control

100% EL double inspection
In-house testing goes well beyond certification requirements



Excellent low light performance

Excellent low light performance on cloudy days
mornings and evenings



Certified to withstand the most challenging environment

2400 Pa wind load • 5400 Pa snow load • 25 mm hail stones at 82 km/h



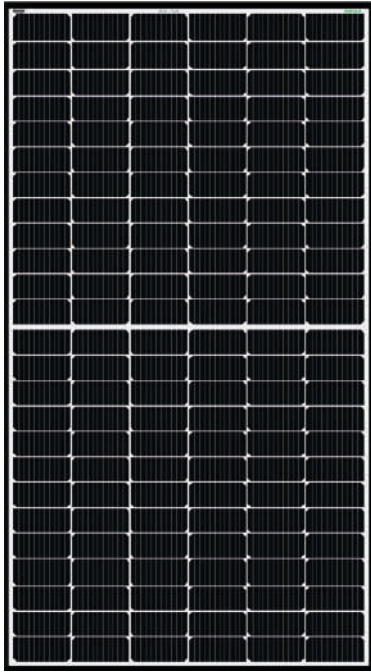
High system voltage compatible

Maximum 1500V DC system voltage saves total system cost



IP 68 junction box

High waterproof level for long term weather endurance



QUALIFICATIONS & CERTIFICATES

- IEC 61215, IEC 61730
- ISO 9001: Quality Management System
- ISO 14001: Environment Management System
- OHSAS 18001: Occupational Health and Safety

WARRANTY



10 years
Product
Warranty



25 years
Performance
Warranty

LOOM SOLAR

Loom Solar is a start-up, a manufacturer of Mono solar panels and AC Module based out of Faridabad, Haryana. It sells solar system across India with promised delivery within 3 days. It is an ISO 9001-2015 certified company and recognized startup by Govt. of India.



LOOM SOLAR PVT. LTD.

Add: Plot No. 14/6, Mathura Road, Sector 27B, Faridabad, Haryana - 121003

Tel: 8750 77 88 00

E-mail: sales@loomsolar.com

Web: www.loomsolar.com

LOOM SOLAR

ELECTRICAL DATA *STC

TYPE (Tolerance: 0 - +5W)	±5
Maximum Power Pmax (W)	545
Maximum Power Voltage Vmp (V)	42.50
Maximum Power Current Imp (A)	12.85
Open Circuit Voltage Voc (V)	49.50
Short Circuit Current Isc (A)	13.70
Module Efficiency (%)	21.30

STC: Irradiance 1000W/m², Cell Temperature 25°C, Air Mass AM 1.5

ELECTRICAL DATA *NOCT

Maximum Power Pmax (W)	407.05
Maximum Power Voltage Vmp (V)	39.40
Maximum Power Current Imp (A)	10.34
Open Circuit Voltage Voc (V)	46.80
Short Circuit Current Isc (A)	10.95

NMOT: Irradiance at 800W/m², Ambient Temperature 20°C, Wind Speed 1m/s

TEMPERATURE RATINGS

Temperature Coefficient of Isc (αIsc)	0.0310%/°C
Temperature Coefficient of Voc (βVoc)	-0.2430%/°C
Temperature Coefficient of Pmax (γPmp)	-0.3318%/°C

OPERATING PARAMETERS

Maximum System Voltage	DC1500
Operating Temperature	-40°C to 85°C
Maximum Series Fuse	25A
Maximum Test Load, Push/Pull	5400Pa / 2400Pa
Conductivity at Ground	≤0.1Ω
Safety Class	II
Resistance	≥100MΩ
Voc and Isc Tolerance	±3%

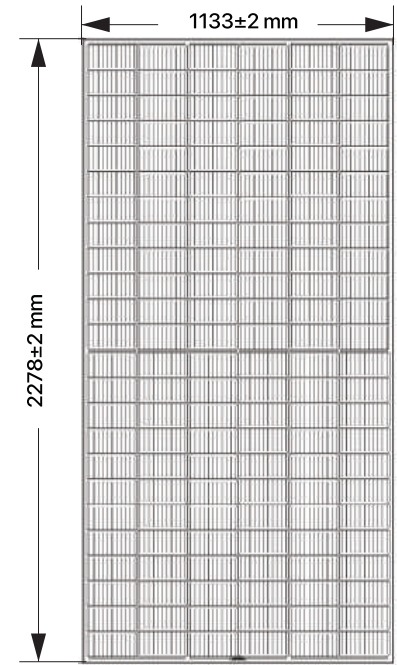
MECHANICAL DATA

Solar Cell Type	MBB-182×91mm(Mono Perc)
Number of Cells	144(12x6) (12x6)
Module Dimensions	2278×1133×40
Weight	28.5 kg
Front Cover	3.2mm Solar Glass with ARC
Back Sheet	Highly Resistant polymeric construction
Frame	Anodized Aluminum
J-Box	IP≥68 ,TÜV &UL
Cable	4mm ² , 400mm or as customer's requirements
Number of diodes	3

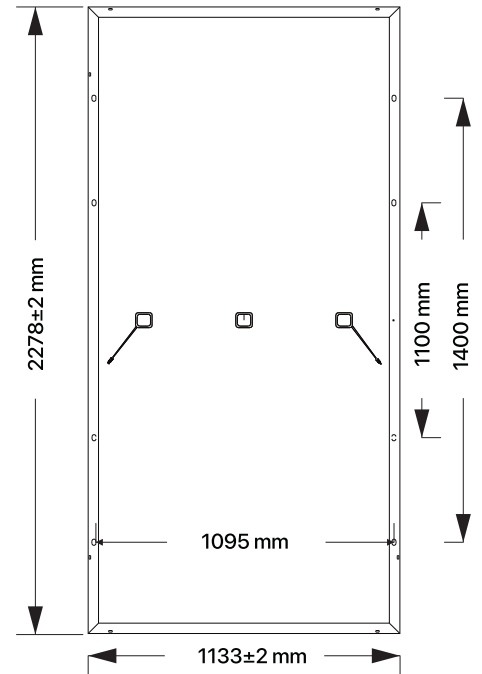
PACKAGING CONFIGURATION

Module per pallet	27 pieces
-------------------	-----------

DIMENSION

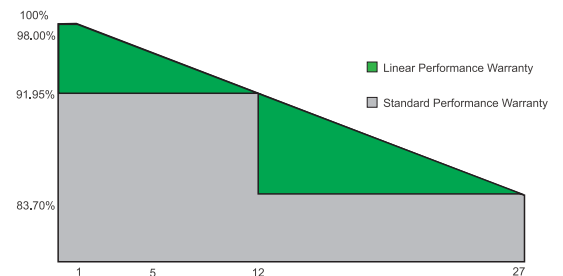


FRONT VIEW



BACKVIEW

SOLAR PANEL DEGRADATION



*Installation instruction must be followed. See the installation manual or contact our technical service department for further information on approved installation.

*The specification and key features described in this datasheet may deviate slightly and are not guaranteed. Due to ongoing innovation, R&D enhancement, Loom Solar (India) Pvt. Ltd. reserves the right to make any adjustment to the information described herein at any time without notice. Please always obtain the most recent version of the datasheet which shall be duly incorporated into the binding contract made by the parties governing all transactions related to the purchase and sale of the products described herein.

LOOM SOLAR