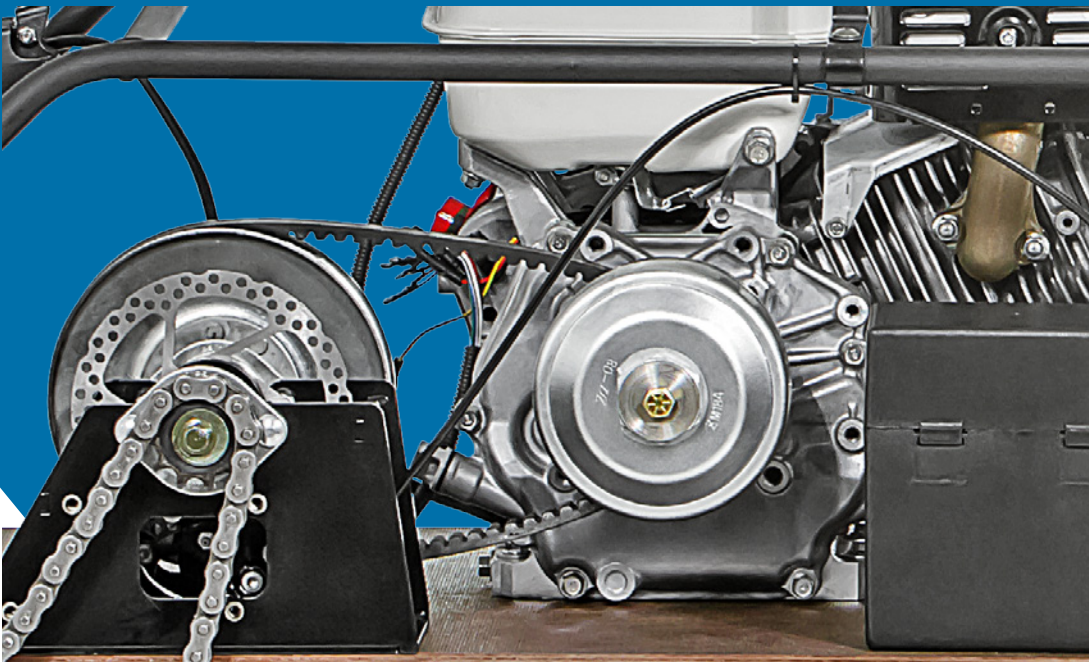


# CHECKING AND UPGRADING DRIVE PULLEY OF CVT ZM184



Sometimes, drive pulley CVT ZM184 may work incorrectly. The drive pulley can not fully open or fully closed. The drive pulley moves in spurts.



To resolve this problem it is necessary to disassemble the drive pulley and check all its parts. Then upgrade the CVT and lubricate it.

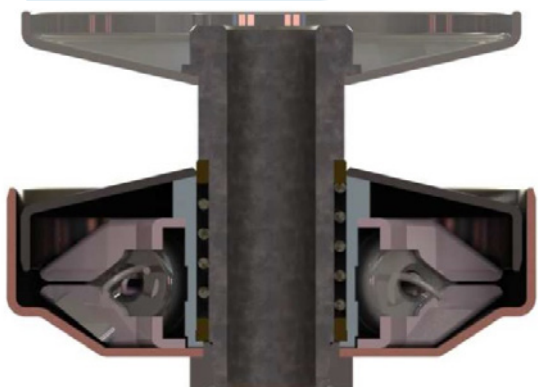
**1. Disassemble the drive pulley CVTP.**

**1.1. Fix the CVT in a vise or other equipment for comfortable service.**

**1.2. Peel back the lock washer.**

**1.3. Hold the outer part of CVT unscrew and remove the nut.**

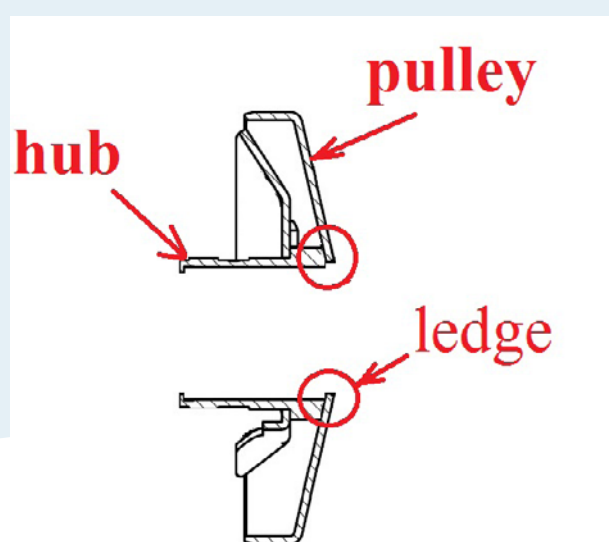
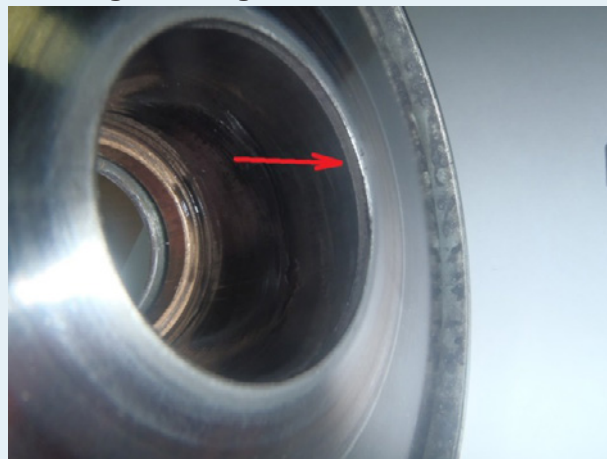
WARNING! In CVT installed spring. When removing the nut and lock washer the external part of pulley will jump out.



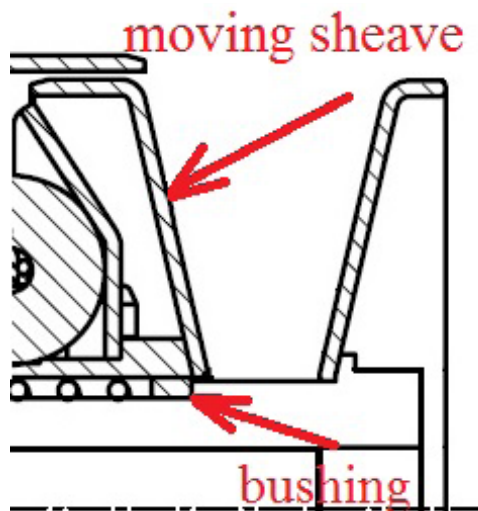
**1.4. Disassemble the CVT into its component parts.**

**2. Checking the drive pulley CVT.**

**2.1. Check the ledge on the movable sheave of driving CVT. Ledges should not be.**



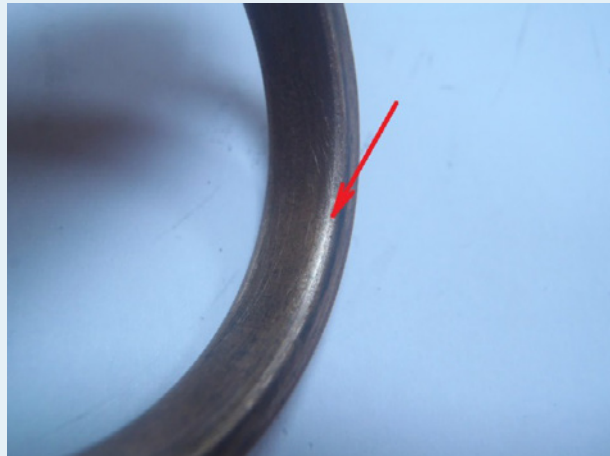
If there is ledge — the moving sheave can be blocked on the bushing.



If there is ledge on a pulley, it is necessary to grind off it.



Sharp edges must be grind off and sanded.



**2.2. Check bronze bushings. Bushes should not have any sharp edges.**

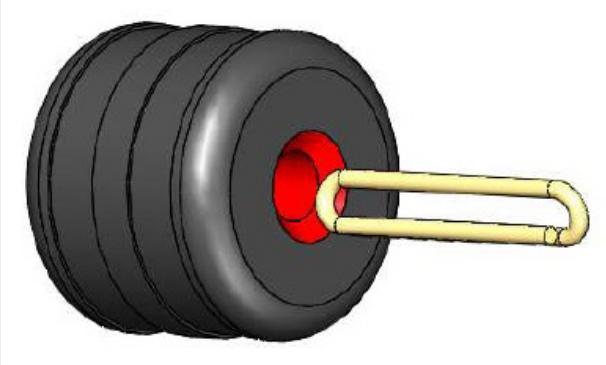


**2.3. Check the rotation of the rollers.**



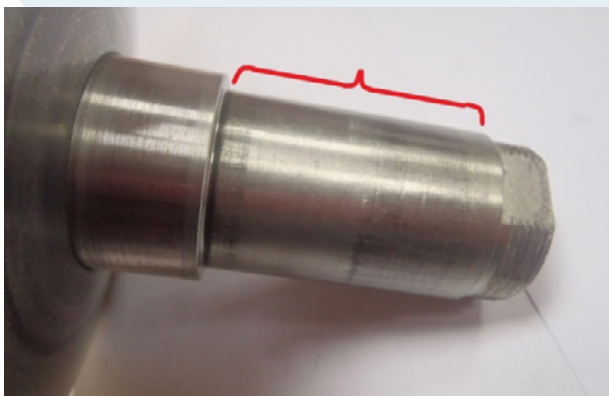


If the rollers rotate bad — check clips.

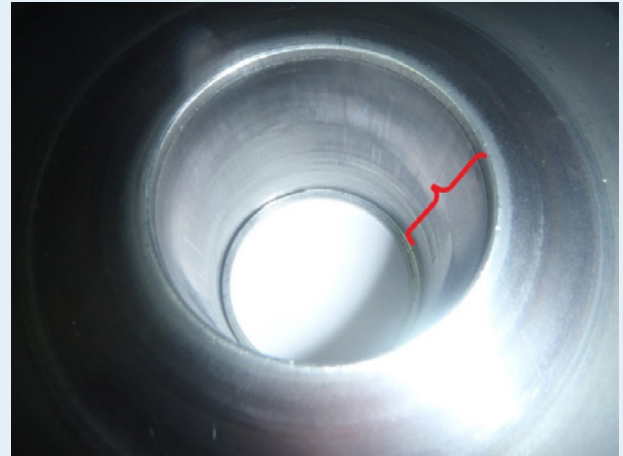


Bad clips needs to be corrected.

2.4. Check the shaft CVT. Shaft should not have transverse burrs.



2.5. Check the inner surface of the movable sheave CVT. Transverse burrs should not be.

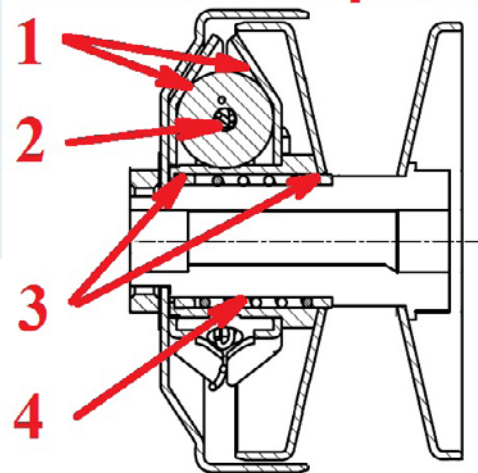


3. Assembling the drive pulley CVT.

3.1. Clean all parts of dirt and old grease.

3.2. Lubricate moving parts CVT pulley.

### Lubrication places



Use non-freezing lithium lubricant (for example, TEXACO STARPLEX EP 2) or aerosol lubricant for motorcycle chains.

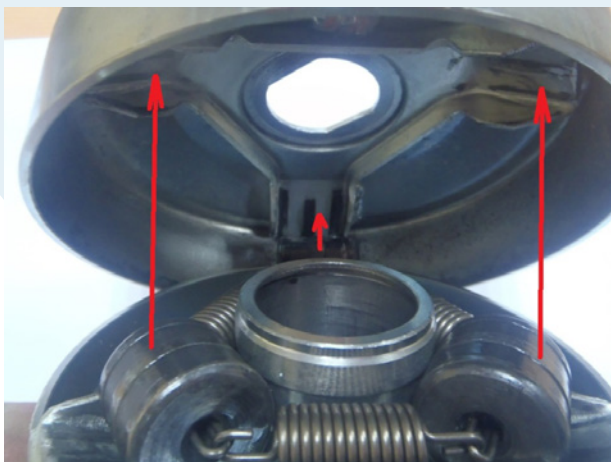
Do not use too much grease.

Avoid getting grease on the working surfaces CVT (CVT surface in contact with the belt).

**3.3. Assemble the rollers and install on a movable sheave of CVT.**



**3.4. Align the rail and rollers and assemble movable sheave.**



**3.5. Install bronze bushing in the movable sheave.**



**3.6. Install the bronze bushing and a spring on the shaft.**

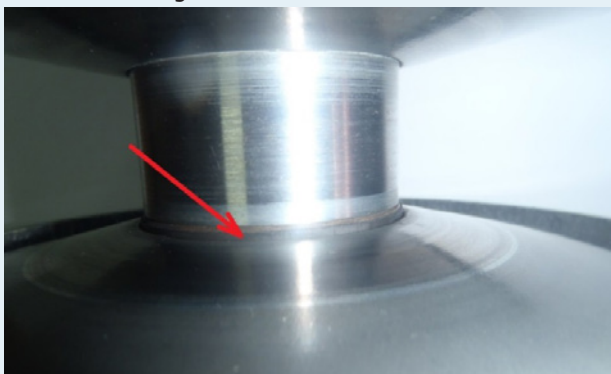


**3.6. Hold assembled movable sheave and install it on the shaft CVT.**

If the spring hinder installation — rotate the movable sheave clockwise. The diameter of the spring will decrease and and sheave will be installed.



If the CVT is assembled correctly — you can see a bronze bushing.



**3.7. Install the lock washer.**



**3.8. Install and tighten the nut. Fold lock washer for fixing nut.**

