

Hoshizaki America, Inc.

Modular Crescent Cuber Serenity Series

Model
KMS-1401MLH



"A Superior Degree
of Reliability"

www.hoshizaki.com

PARTS LIST



Number: 71303
Issued: 12-2-2009
Revised: 11-18-2011

CONTENTS

Auxiliary Codes.....	3
Note About Ordering Parts	3
A. Ice Cuber Assembly and Refrigeration Circuit.....	4
B. Water Circuit	7
C. Control Box Assembly	10
D. Label Location	11
E. Accessories & Packaging	12

Auxiliary Codes

KMS-1401MLH	U-0	November 2009
	V-0	February 2010
	V-1	March 2010
	A-0	January 2011
	A-1	March 2011

Auxiliary Code Breakdown

The auxiliary code is the first two characters in the serial number. The first character indicates the year. Years progress or regress in alphabetical order. The series runs from "A" through "V" and the letters "I" and "O" are skipped. The second character indicates significant part changes within a year. Base is "0" and this number advances for each change. In cases where there is a letter in parentheses, this designates the month. This is the last character in the serial number. The series runs from "(A)" through "(M)" and the letter "(I)" is skipped. This designation is only included when identifying a parts change within an auxiliary code.

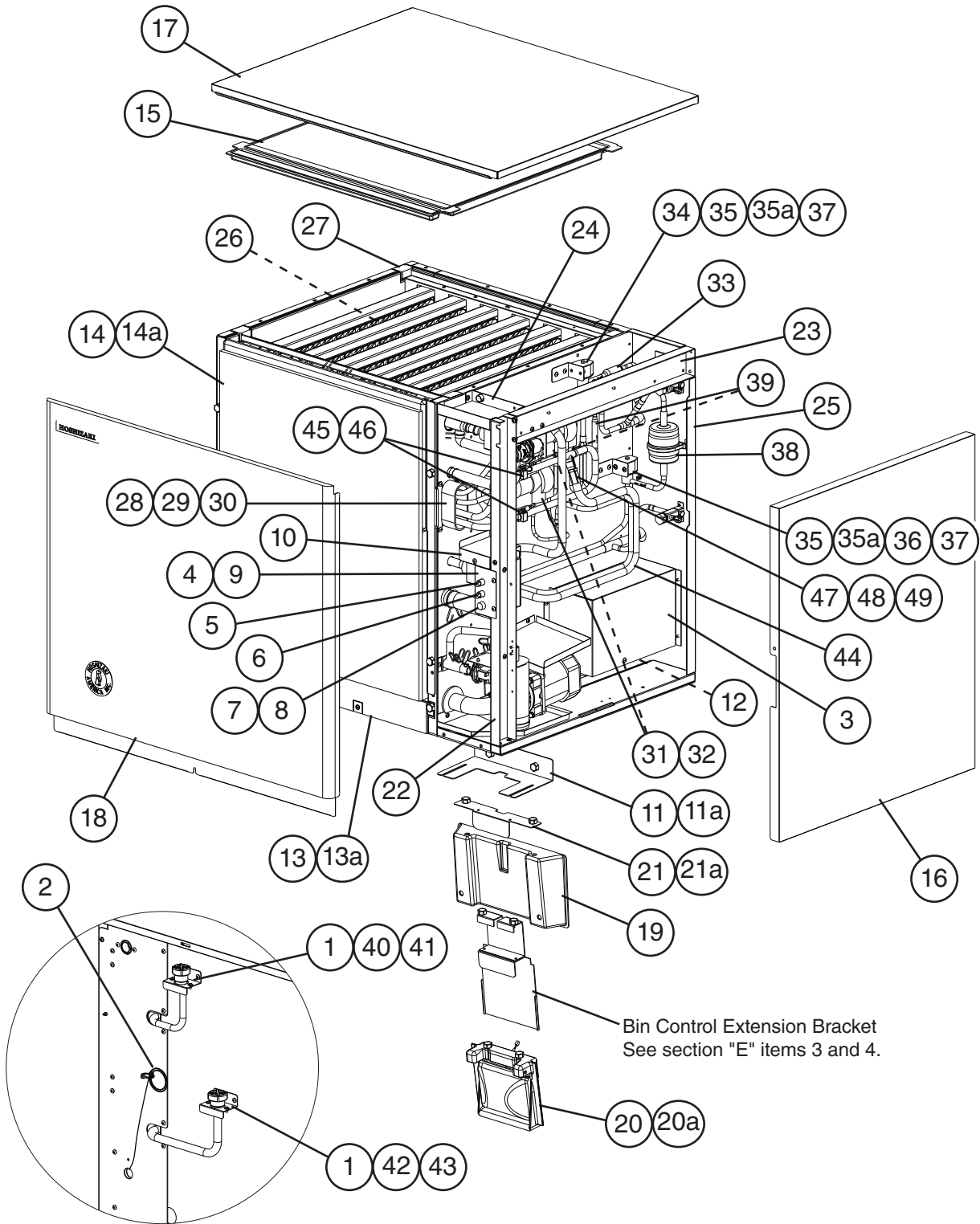
Note About Ordering Parts

Most assemblies cannot be ordered as complete units; parts in the assemblies generally must be ordered separately.

A. Ice Cuber Assembly and Refrigeration Circuit

KMS-1401MLH

U-0 to A-1



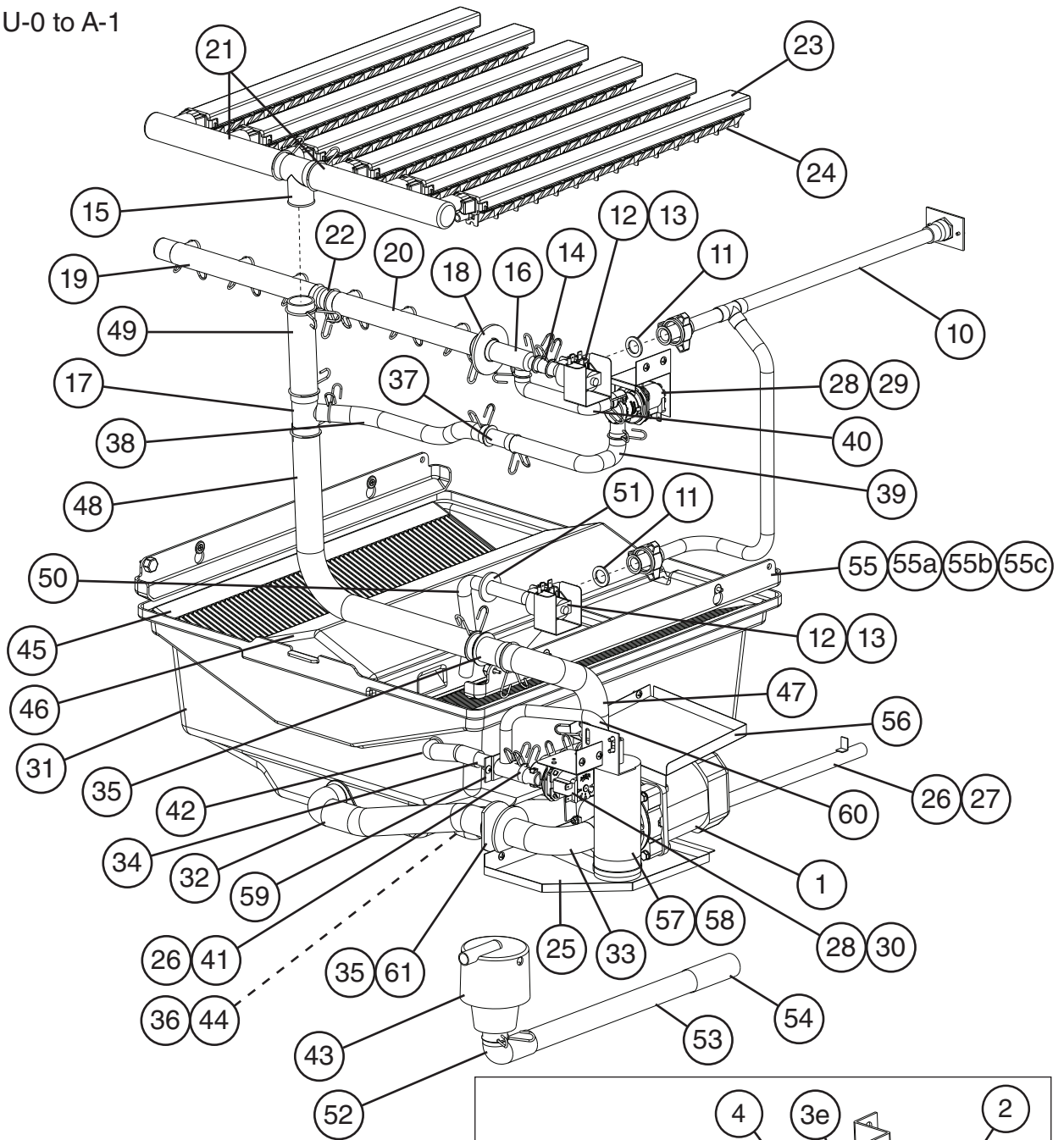
Title: **A. Ice Cuber Assembly and Refrigeration Circuit** Model: **KMS-1401MLH**

Index No.	Description	Material or Model Number	Part Number	Required Number									
				U-0 to A-0	A-1								
Ice Cuber Assembly Order Assembly Parts Individually			1A1698A01	1	1								
1	Coupling Bracket		4A3891-02	2	2								
2	Wire Harness		469256G01	1	1								
3	Control Box Cover		3A3248-01	1	1								
4	Switch Box		3A3277-01	1	1								
5	Control Switch		443119-01	1	1								
6	Service Switch		4A0985-01	1	1								
7	Fuse Holder		4A3449-01	1	1								
8	Fuse	10A, 250VAC	4A0893-07	1	1								
9	Switch Box Bracket		3A3304-01	1	1								
10	Switch Box Cover		4A3623-01	1	1								
11	Switch Bracket		4A3541-01	1	-								
			4A4678-01		1								
11a	Thumbscrew		415949G08	2	2								
12	Evaporator Case Pipe B		4A3525-01	1	1								
13	Front Frame		4A3542G01	1	1								
13a	Thumbscrew		415949G10	2	2								
14	Front Insulation		3A3250G01	1	1								
14a	Thumbscrew		415949G10	4	4								
15	Top Insulation		3A3251G01	1	1								
16	Right Side Panel		2A3225G01	1	1								
17	Top Panel		2A3226-01	1	1								
18	Front Panel		2A3236-01	1	1								
19	Bin Switch Mount		3A3278G01	1	1								
20	Bin Control		2A4393G01	1	1								
20a	Thumbscrew		415949G08	2	2								
21	Switch Cover		4A3580-01	1	1								
21a	Thumbscrew		415949G08	2	2								
Refrigeration Circuit Order Assembly Parts Individually			1A1470A03	1	1								
22	Side Frame A		2A5022-01	1	1								
23	Side Frame B		3A3256-01	1	1								
24	Front Frame		3A3257-01	1	1								
25	Rear Panel		2A5016-01	1	1								
26	Evaporator		2A4531G01	1	1								
27	Frame Seal		323925-01	4	4								
28	Rubber Tube		323974-01	1	1								
29	Insulation		436597-01	1	1								
30	Insulation Holder		3A0979-01	1	1								
31	Thermostatic Expansion Valve		4A1482-01	2	2								
32	Thermostatic Expansion Valve Cover		3A0944-01	2	2								
33	Strainer		441569-02	1	1								
34	Hot Gas Valve Body		4A3978-01	1	1								
35	Valve Coil (includes item 35a)		4A3277-01	2	2								
35a	Bolt		4A3277F01	2	2								

Title: **A. Ice Cuber Assembly and Refrigeration Circuit** Model: **KMS-1401MLH**

Index No.	Description	Material or Model Number	Part Number	Required Number											
				U-0 to A-0	A-1										
36	Liquid Line Valve Body		4A3276-01	1	1										
37	Valve Coil Bracket		4A3890-01	2	2										
38	Drier		4A2663-01	1	1										
39	Check Valve		4A1373-01	2	2										
40	Liquid Line Coupling		434072-01	1	1										
41	Liquid Line Tube Holder		438245-01	1	1										
42	Suction Line Coupling		4A3826-01	1	1										
43	Suction Line Tube Holder		438245-02	1	1										
44	Heat Exchanger		3A3263G01	1	1										
45	Thermostatic Expansion Valve Bulb Holder		3A0107-01	2	2										
46	Clamp		443461-02	2	2										
47	Thermistor Holder		438247-01	1	1										
48	Thermistor Insulation		427441-01	1	1										
49	Thermistor	L=1700	429006-05	1	1										

B. Water Circuit
KMS-1401MLH
 U-0 to A-1



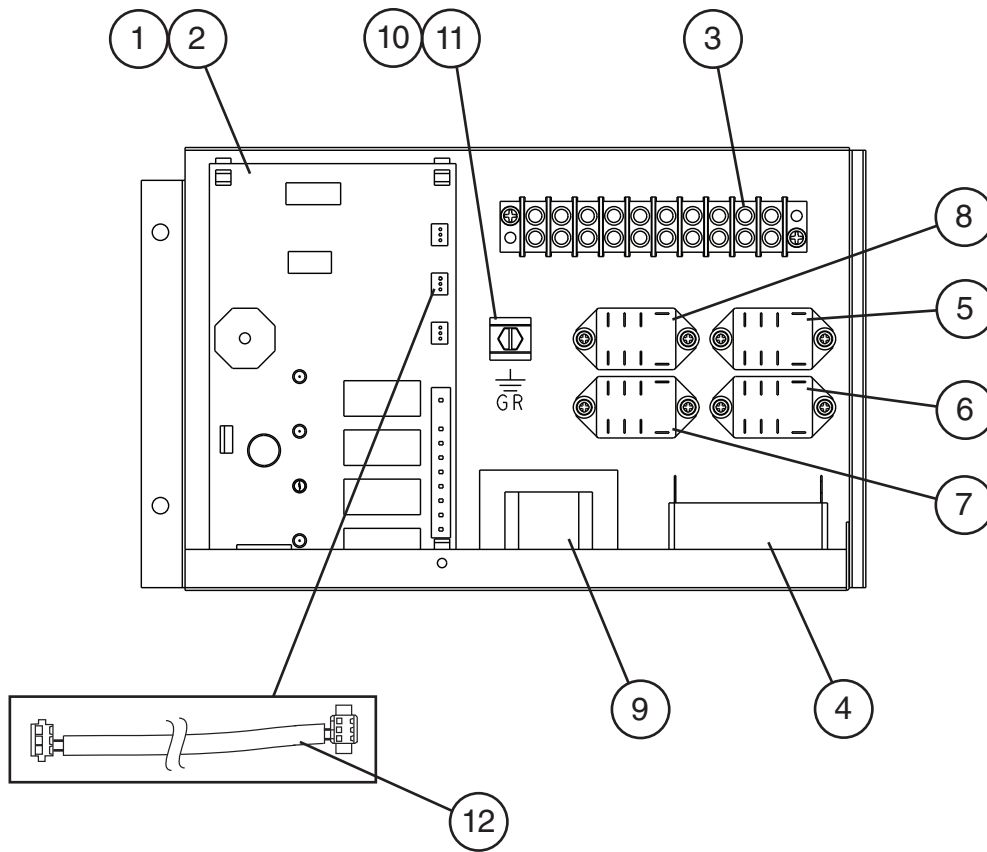
Title: **B. Water Circuit** Model: **KMS-1401MLH**

Index No.	Description	Material or Model Number	Part Number	Required Number									
				U-0 to V-1	A-0	A-1							
Water Circuit			1A1706A01	1	1	1							
Order Assembly Parts Individually													
1	Pump Motor Assembly (includes items 2 through 9b)	HS-0183	2A3237A01	1	1	1							
2	Pump Motor		2U0106-01	1	1	1							
3	Pump Flange		215662-01	1	1	1							
3a	Hex Head Bolt	6x40, SS	7B02-0640	4	4	4							
3b	Split Lock Washer	M6, SS	7L22-0600	4	4	4							
3c	Flat Washer	M6, SS	7W22-0600	4	4	4							
3d	Hex Nut	M6, SS	7N12-0600	4	4	4							
3e	Tooth Washer	M6, SS	7R22-0600	2	2	2							
4	Pump Motor Bracket		3A3252-01	1	1	1							
5	Mechanical Seal		4A3820-01	1	1	1							
6	Packing		428547-01	1	1	1							
7	Impeller		436584-01	1	1	1							
8	Pin		4A0648-01	1	1	1							
9	Pump Housing		2A3214-01	1	1	1							
9a	Hex Head Bolt	4x55, SS	7B02-0455	4	4	4							
9b	Hex Flange Nut	M4, SS	7J02-0400	4	4	4							
10	Water Supply Pipe		3A5118G01	1	1	1							
11	Rubber Gasket		413854-03	2	2	2							
12	Inlet Water Valve Bracket		3A5725-01	2	2	2							
13	Inlet Water Valve (fill/freeze (WV1) and harvest (WV2))		4A1176-08	2	-								
			4A5251-08		2	2							
14	Vinyl Hose	L=40	7716-1216	1	1	1							
15	Distributor A		4A3528-01	1	1	1							
16	Distributor B		3A3239-01	1	1	1							
17	Distributor C		4A3530-01	1	1	1							
18	Flange		439267-02	1	1	1							
19	Distributor Hose A		325738-01	1	1	1							
20	Distributor Hose B		325738-02	1	1	1							
21	Distributor Hose C		325739-02	2	2	2							
22	Joint Pipe		439297-02	1	1	1							
23	Spray Tube		437049G04	6	6	6							
24	Spray Guide		2A4282-03	6	6	6							
25	Pump Condensate Drain		3A5841G01	1	1	1							
26	Vinyl Hose	L=50	7716-1519	2	2	2							
27	Drain Pipe		4A3568G01	1	1	1							
28	Drain/Wash Valve		4A3722-05	2	2	2							
29	Drain Valve Bracket A		4A3569-01	1	1	1							
30	Drain Valve Bracket B		4A3570-01	1	1	1							
31	Tank		1A1146G01	1	1	1							
32	Suction Hose A		3A3234-01	1	1	1							
33	Suction Hose B		4A3534-01	1	1	1							
34	Evaporator Case Pipe A		4A3524-01	1	1	1							
35	Evaporator Case Pipe C		4A3526-01	2	2	2							
36	Evaporator Case Pipe D		4A3527-01	1	1	1							

Title: **B. Water Circuit** Model: **KMS-1401MLH**

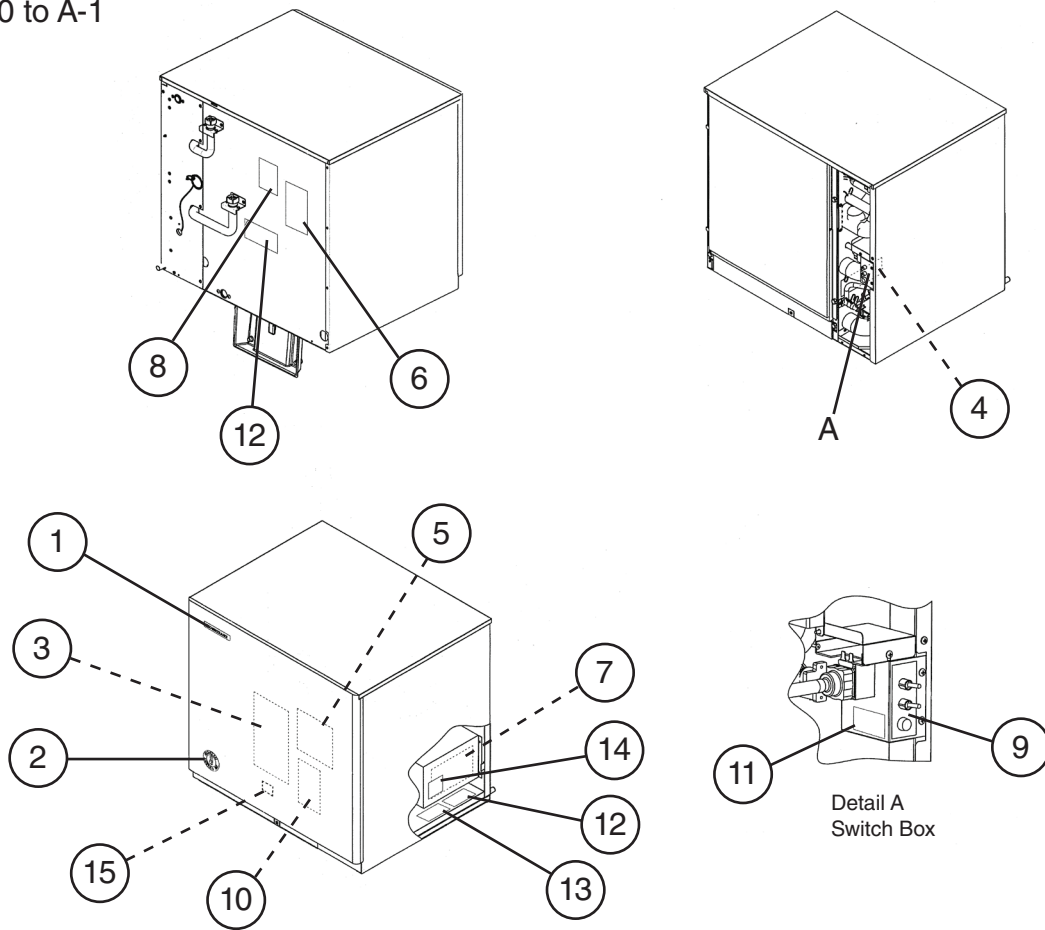
Index No.	Description	Material or Model Number	Part Number	Required Number												
				U-0 to V-1	A-0	A-1										
37	Evaporator Case Pipe E		4A3765-01	1	1	1										
38	Vinyl Hose	L=320	7716-1519	1	1	1										
39	Inlet Hose		3A3496-01	1	1	1										
40	Outlet Hose		3A3497-01	1	1	1										
41	Vinyl Hose	L=45	7716-1519	1	1	1										
42	Overflow Drain Hose		4A3536-01	1	1	1										
43	Overflow Cap		2A3215-01	1	1	1										
44	Vinyl Hose	L=80	7716-1216	1	1	1										
45	Cube Guide		1A0966-01	2	2	2										
46	Tank Separator		2A3220-01	1	1	1										
47	Discharge Hose A		4A3532-01	1	1	1										
48	Discharge Hose B		4A3533-01	1	1	1										
49	Vinyl Hose	L=124	7716-2732	1	1	1										
50	Inlet Hose		4A3535-01	1	1	1										
51	Flange		4A3573-01	1	1	1										
52	Drain Hose A		4A3537-01	1	1	1										
53	PVC Pipe		433509-03	1	1	1										
54	Drain Hose B		434808-01	1	1	1										
55	Side Separator		3A3235-01	2	2	2										
55a	Collar		435269-01	4	4	4										
55b	Flat Head T2 Screw	4x12, SS	7P22-0412	4	4	4										
55c	Thumbscrew		415949G10	2	2	2										
56	Motor Cover		4A3586-01	1	1	1										
57	Float Switch		468264-01	1	1	1										
58	Float Switch Connector		3A4169-01	1	1	1										
59	Pipe Stopper		4A3767-01	1	1	1										
60	Float Hose		4A3766-01	1	1	1										
61	Flange		439267-03			2										
Hose Clamps																
	Hose Clamp	25mm, SS	427443-03	3	3	3										
	Hose Clamp	16.5mm, SS	427443-04			1										
	Hose Clamp	18mm, SS	427443-05	7	7	7										
	Hose Clamp	20mm, SS	427443-06	4	4	1										
	Hose Clamp	13.5mm, SS	427443-07	6	6	6										
	Hose Clamp	27mm, SS	427443-08	1	1	1										
	Hose Clamp	32mm, SS	427443-09	8	8	8										

C. Control Box Assembly
KMS-1401MLH
 U-0 to A-1



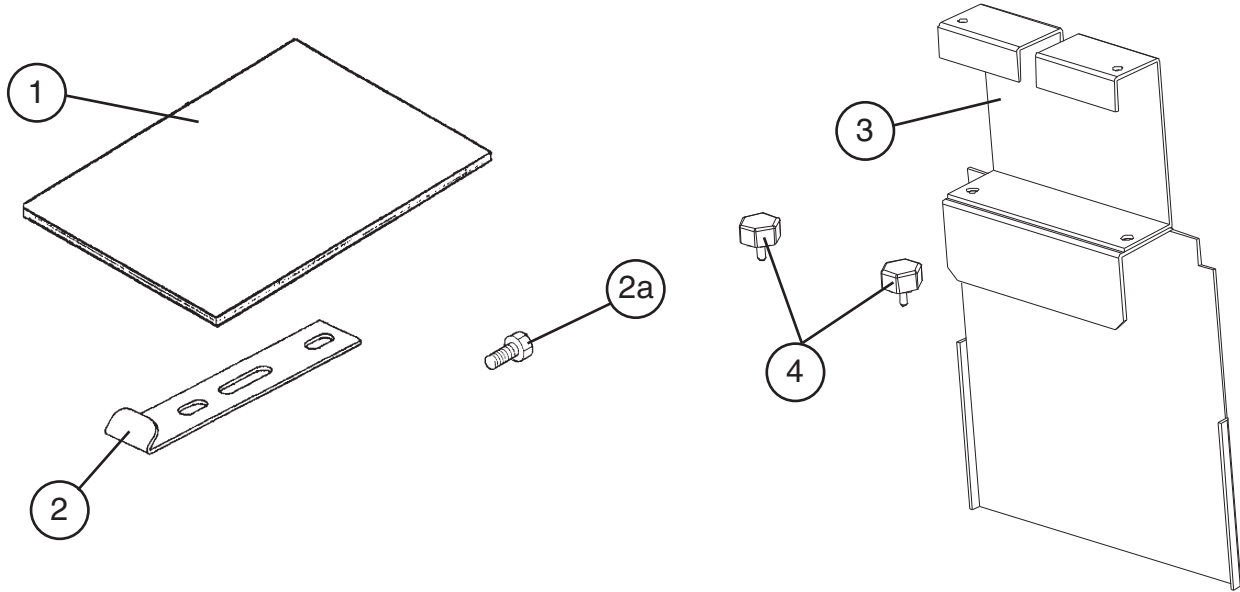
Title: C. Control Box Assembly Model: KMS-1401MLH																	
Index No.	Description	Material or Model Number	Part Number	Required Number													
				U-0 to A-1													
Control Box Assembly				3A3247A01	1												
Order Assembly Parts Individually																	
1	Control Board		2A3792-01	1													
2	Board Support		4A0336-03	4													
3	Terminal Block		4A4201-01	1													
4	Pump Motor Capacitor	10MFD, 250VAC	443192-01	1													
5	Relay-X11 Inlet Water Valve		406132-07	1													
6	Relay-X12 Pump-Out		406132-07	1													
7	Relay-X13 Drain Valve Lock Out 1		406132-07	1													
8	Relay-X14 Drain Valve Lock Out 2		406132-07	1													
9	Transformer		3A0172-01	1													
10	Square Washer		433537-02	1													
11	Ground Screw		433304-02	1													
12	Wire Harness		4A2200G04	1													

D. Label Location
KMS-1401MLH
 U-0 to A-1



Title: D. Label Location		Model: KMS-1401MLH		Required Number									
Index No.	Description	Material or Model Number	Part Number	U-0 to A-0 (A)	A-0 (B) to A-1								
				Label Location				1	1				
Order Assembly Parts Individually													
1	Emblem		4A0560-01	1	1								
2	Penguin Label		4A0526-01	1	1								
3	Maintenance Label		2A3296-01	1	1								
4	Warning Label K		4A4736-01	1	1								
5	Wiring Label		2A4810-01	1	1								
6	Nameplate		2A3298-04	1	1								
7	Control Board Label		3A4784-01	1	1								
8	Instruction Label		444575-01	1	1								
9	Manual Label		3A3331-01	1	1								
10	Rating Label		2A3300-04	1	1								
11	Fuse Label		4A2817-01	1	1								
12	404A Label		4A0960-01	2	2								
13	Caution Label		4A4209-01	1	1								
14	Alarm Label		4A3517-01	1	1								
15	Front Frame Seal Caution Label		4A5356-01		1								

E. Accessories & Packaging
KMS-1401MLH
 U-0 to A-1



Title: E. Accessories & Packaging Model: KMS-1401MLH															
Index No.	Description	Material or Model Number	Part Number	Required Number											
				U-0 to A-1											
1	Instruction Manual		91A1YE10A	1											
2	Universal Brace		4A0363-01	2											
2a	Hex Bolt	5x12, SS	7B02-0512	2											
3	Extension Bracket		4A4296G01	1											
4	Thumbscrew		415949G08	2											
5	Sealant	RTV-748	8601-0111	1											
	Packaging		2A5858A02												