

Hoshizaki America, Inc.

Modular Crescent Cuber Serenity Series

Model
KMS-I400MLH



“A Superior Degree
of Reliability”

www.hoshizaki.com

PARTS LIST



Number: 71279
Issued: 4-3-2008

CONTENTS

| | |
|-----------------------------------|----|
| Auxiliary Codes..... | 3 |
| Note About Ordering Parts | 3 |
| Material Abbreviations | 4 |
| A. Ice Cuber Assembly | 5 |
| B. Refrigeration Circuit | 7 |
| C. Water Circuit | 11 |
| D. Control Box Assembly..... | 15 |
| E. Switch Box Assembly..... | 17 |
| F. Bin Switch Unit | 18 |
| G. Label Location | 19 |
| H. Pump Motor Assembly..... | 20 |
| J. Accessories and Packaging..... | 21 |

Auxiliary Codes

KMS-1400MLH T-0 January 2008

Auxiliary Code Breakdown

K-0

- └─ Designates the year. "K" indicates the year 2000. Years progress or regress in alphabetical order. "J" is 1999, "L" is 2001, "M" is 2002, and so on. The letters "I" and "O" were skipped.
- └─ Designates significant part changes within the same year for this model. Base is 0 and this number advances for each change.

Example: P-1

- └─ "P" indicates 2004.
- └─ "1" indicates the first significant part change for 2004.

Note About Ordering Parts

Most assemblies cannot be ordered as complete units; parts in the assemblies generally must be ordered separately.

Material Abbreviations

ALUMINUM

AL = Aluminum

COPPER

CU = Copper

PLASTIC

ABS = Acrylonitrile -butadiene - styrene
AC = Polyacetal
EVA = Ethylene vinyl acetate
PA = Polyamide = Nylon
PC = Polycarbonate
PE = Polyethylene
PES = Polyester
PETP = Polyethylene terephthalate = Tetlon
PP = Polypropylene
PS = Polystyrene
PTFE = Polytetrafluoroethylene = Teflon
PUR = Polyurethane
PVC = Polyvinyl chloride

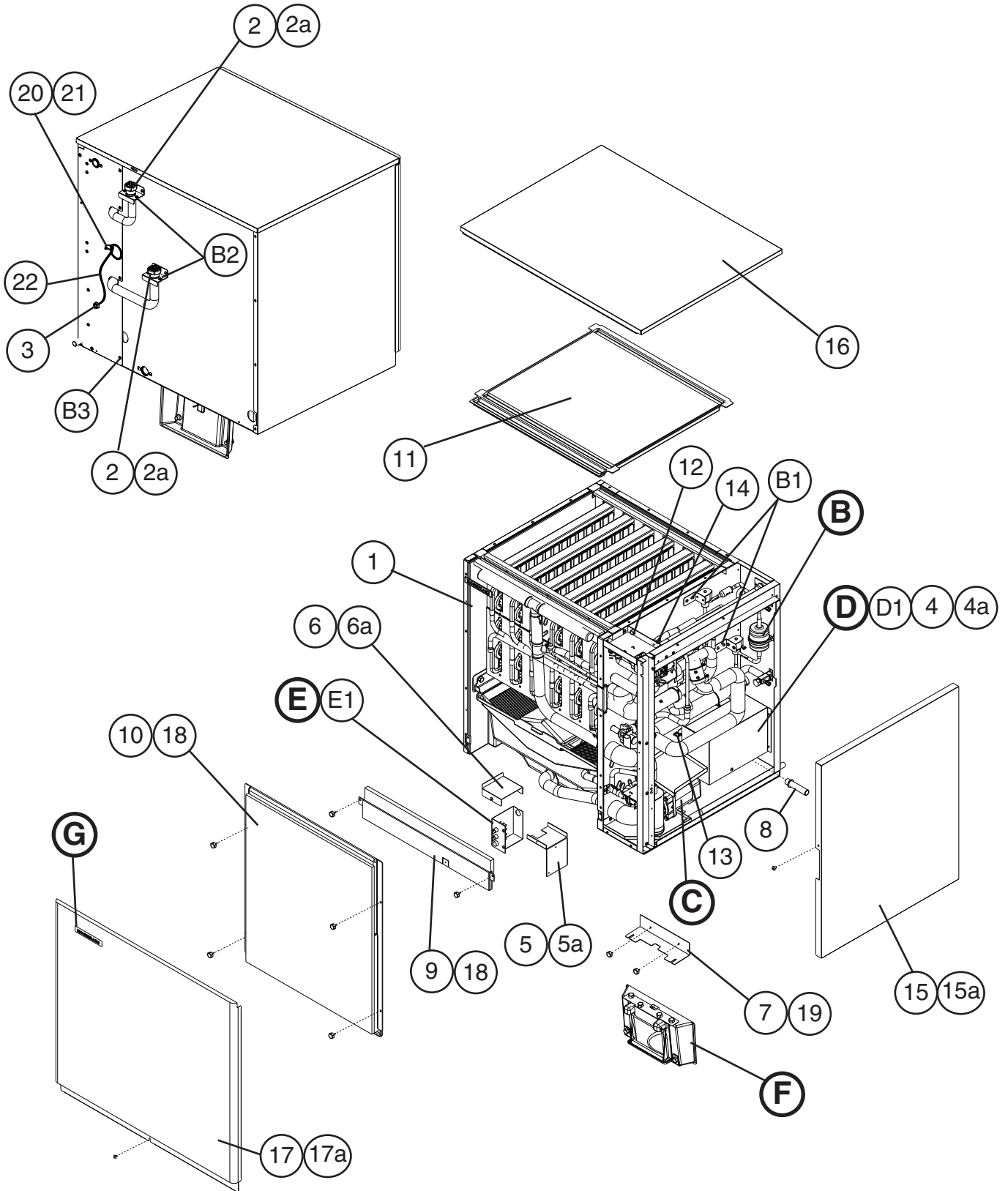
RUBBER

VN = Vinyl Nitrile
EPDM = EP rubber
NBR = Nitrile butadiene rubber
NR = Natural rubber
NP = Neoprene
SI.R = Silicone rubber
SY.R = Synthetic rubber
EPH = Epichlorohydrin

STEEL

GS = Galvanized steel
SS = Stainless steel
PS = Plated steel
PAS = Primed steel

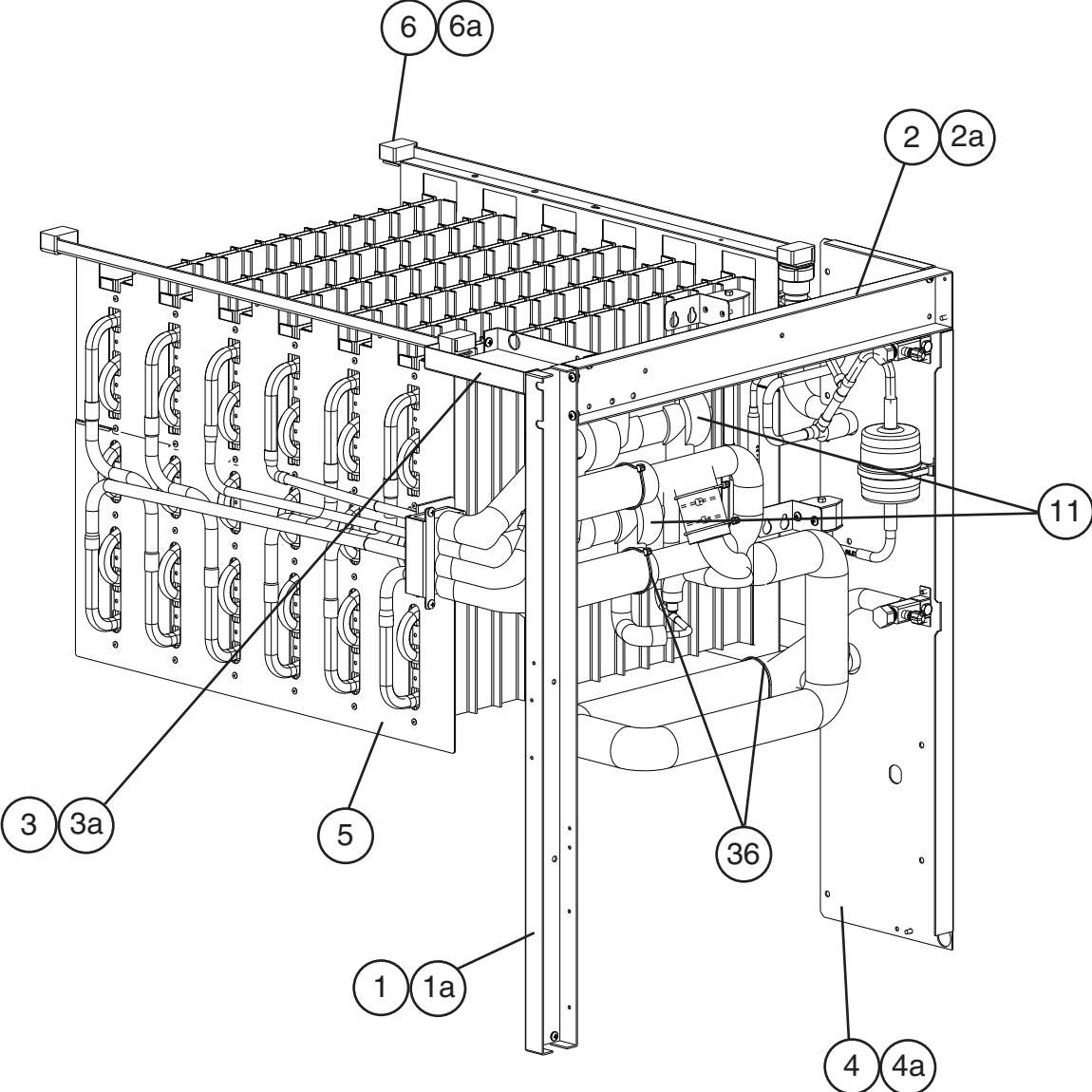
A. Ice Cuber Assembly
KMS-1400MLH
 T-0



Title: **A. Ice Cuber Assembly** Model: **KMS-1400MLH**

| Index No. | Description | Material or Model Number | Part Number | Required Number | | | | | | | | | |
|-----------|-------------------------------|--------------------------|-------------|-----------------|--|--|--|--|--|--|--|--|--|
| | | | | T-0 | | | | | | | | | |
| B | Refrigeration Circuit | - | 1A1470A01 | 1 | | | | | | | | | |
| B1 | T2 Screw | 4x8, SS | 7P32-0408 | 4 | | | | | | | | | |
| B2 | Truss Head Screw | 4x8, SS | 7C32-0408 | 4 | | | | | | | | | |
| B3 | T2 Screw | 4x8, SS | 7P32-0408 | 6 | | | | | | | | | |
| C | Water Circuit | - | 1A1536A01 | 1 | | | | | | | | | |
| D | Control Box Assembly | - | 3A3247A01 | 1 | | | | | | | | | |
| D1 | T2 Screw | 4x8, SS | 7P32-0408 | 4 | | | | | | | | | |
| E | Switch Box Assembly | - | 4A3540A01 | 1 | | | | | | | | | |
| E1 | T2 Screw | 4x8, SS | 7P32-0408 | 2 | | | | | | | | | |
| F | Bin Switch Unit (bin control) | - | 3A3249A01 | 1 | | | | | | | | | |
| G | Label Location | - | 2A4558A01 | 1 | | | | | | | | | |
| 1 | Evaporator Case | - | 1A1483G01 | 1 | | | | | | | | | |
| 2 | Bracket / Coupling | GS | 4A3891-02 | 2 | | | | | | | | | |
| 2a | T2 Screw | 4x8, SS | 7P32-0408 | 4 | | | | | | | | | |
| 3 | Bushing | SR-7P-2 | 420472-07 | 1 | | | | | | | | | |
| 4 | Control Box Cover | GS | 3A3248-01 | 1 | | | | | | | | | |
| 4a | T2 Screw | 4x8, SS | 7P32-0408 | 1 | | | | | | | | | |
| 5 | Switch Box - Bracket | GS | 3A3304-01 | 1 | | | | | | | | | |
| 5a | Truss Head Screw | 4x8, SS | 7C32-0408 | 2 | | | | | | | | | |
| 6 | Switch Box - Cover | GS | 4A3623-01 | 1 | | | | | | | | | |
| 6a | T2 Screw | 4x8, SS | 7P32-0408 | 1 | | | | | | | | | |
| 7 | Switch Bracket | SS | 4A3541-01 | 1 | | | | | | | | | |
| 8 | Pipe (B) - Evaporator Case | - | 4A3525-01 | 1 | | | | | | | | | |
| 9 | Front Frame | - | 4A3542G01 | 1 | | | | | | | | | |
| 10 | Front Insulation | - | 3A3250G01 | 1 | | | | | | | | | |
| 11 | Top Insulation | - | 3A3251G01 | 1 | | | | | | | | | |
| 12 | Bushing | OCB-625 | 428394-03 | 1 | | | | | | | | | |
| 13 | Wire Saddle | VWS-4238-C | 4A0338-02 | 5 | | | | | | | | | |
| 14 | Wire Saddle | VWS-4218-C | 4A0338-01 | 3 | | | | | | | | | |
| 15 | Side Panel (R) | SS | 2A3225G01 | 1 | | | | | | | | | |
| 15a | Truss Head Screw | 4x8, SS | 7C32-0408 | 1 | | | | | | | | | |
| 16 | Top Panel | SS | 2A3226-01 | 1 | | | | | | | | | |
| 17 | Front Panel | SS | 2A3236-01 | 1 | | | | | | | | | |
| 17a | Truss Head Screw | 4x12, SS | 7C32-0412 | 1 | | | | | | | | | |
| 18 | Thumbscrew | ABS, SS | 415949G10 | 6 | | | | | | | | | |
| 19 | Thumbscrew | ABS, SS | 415949G08 | 2 | | | | | | | | | |
| 20 | Cable Tie | CV-200 | 8911-0200 | 1 | | | | | | | | | |
| 21 | Cable Tie Mount | PH-2H-25 | 437618-01 | 1 | | | | | | | | | |
| 22 | Wire Harness | - | 469256G01 | 1 | | | | | | | | | |

B. Refrigeration Circuit
1/2
KMS-1400MLH
T-0

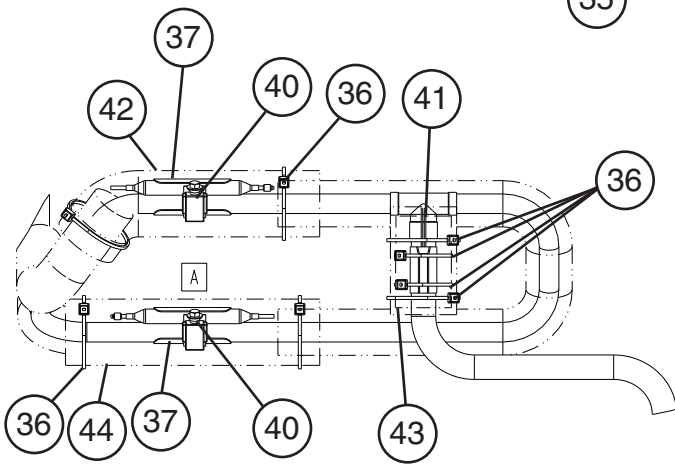
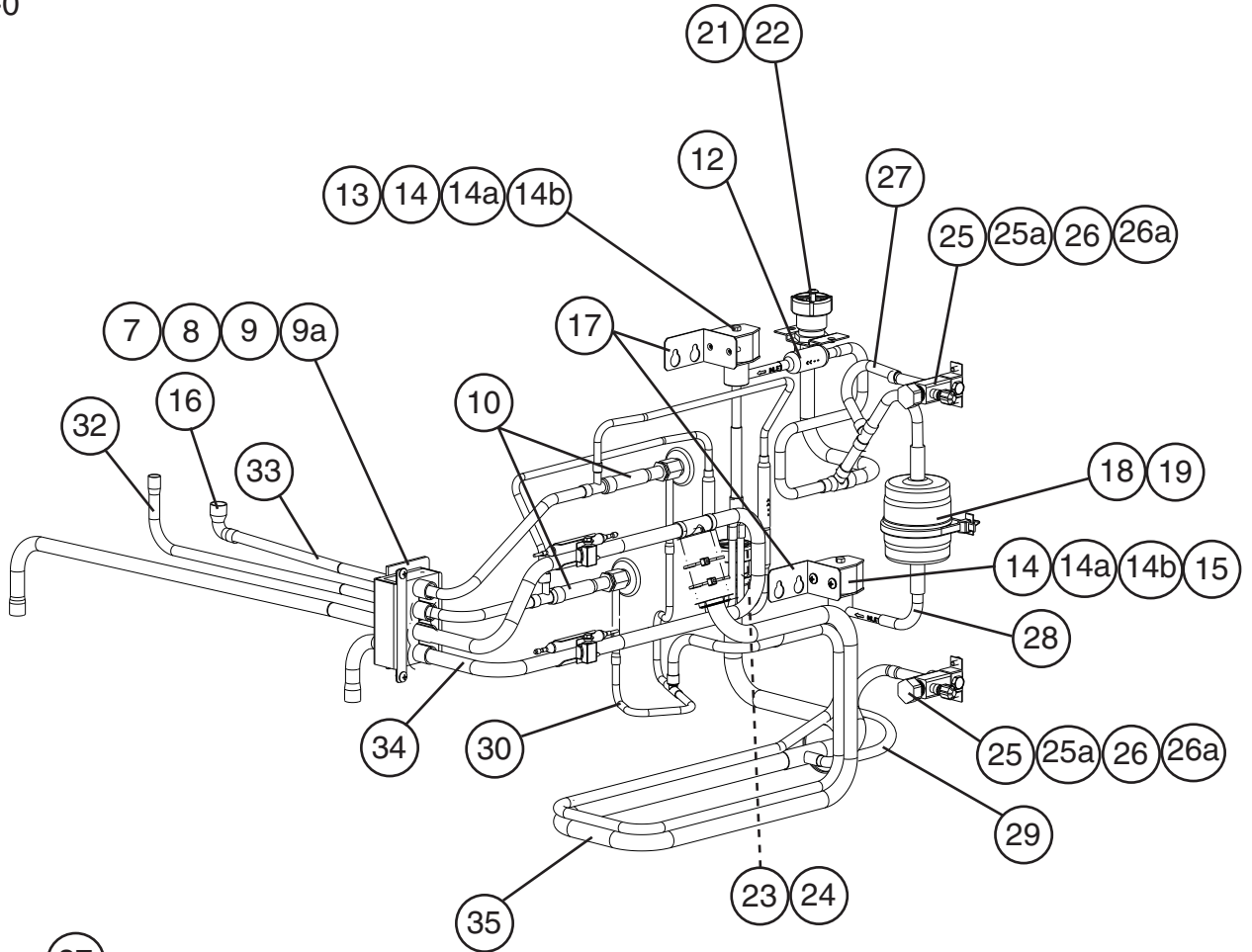


B. Refrigeration Circuit

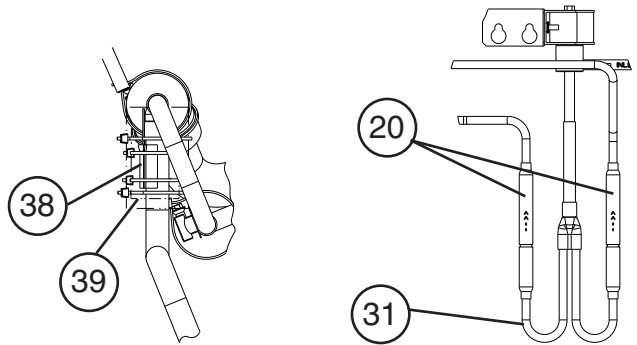
2/2

KMS-1400MLH

T-0



Detailed Thermistor and TXV Bulb Attachment

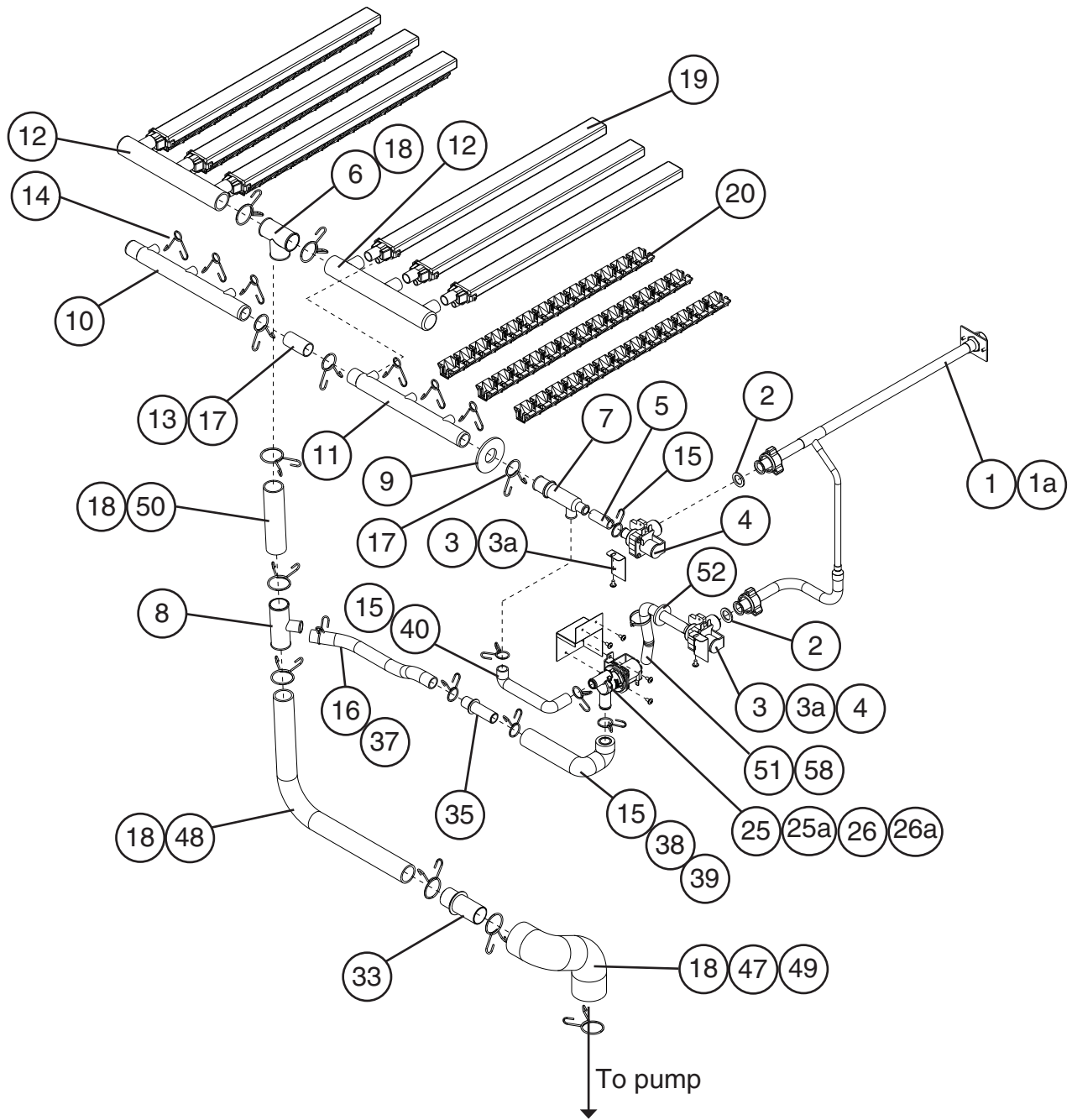


Detailed Check Valve Attachment

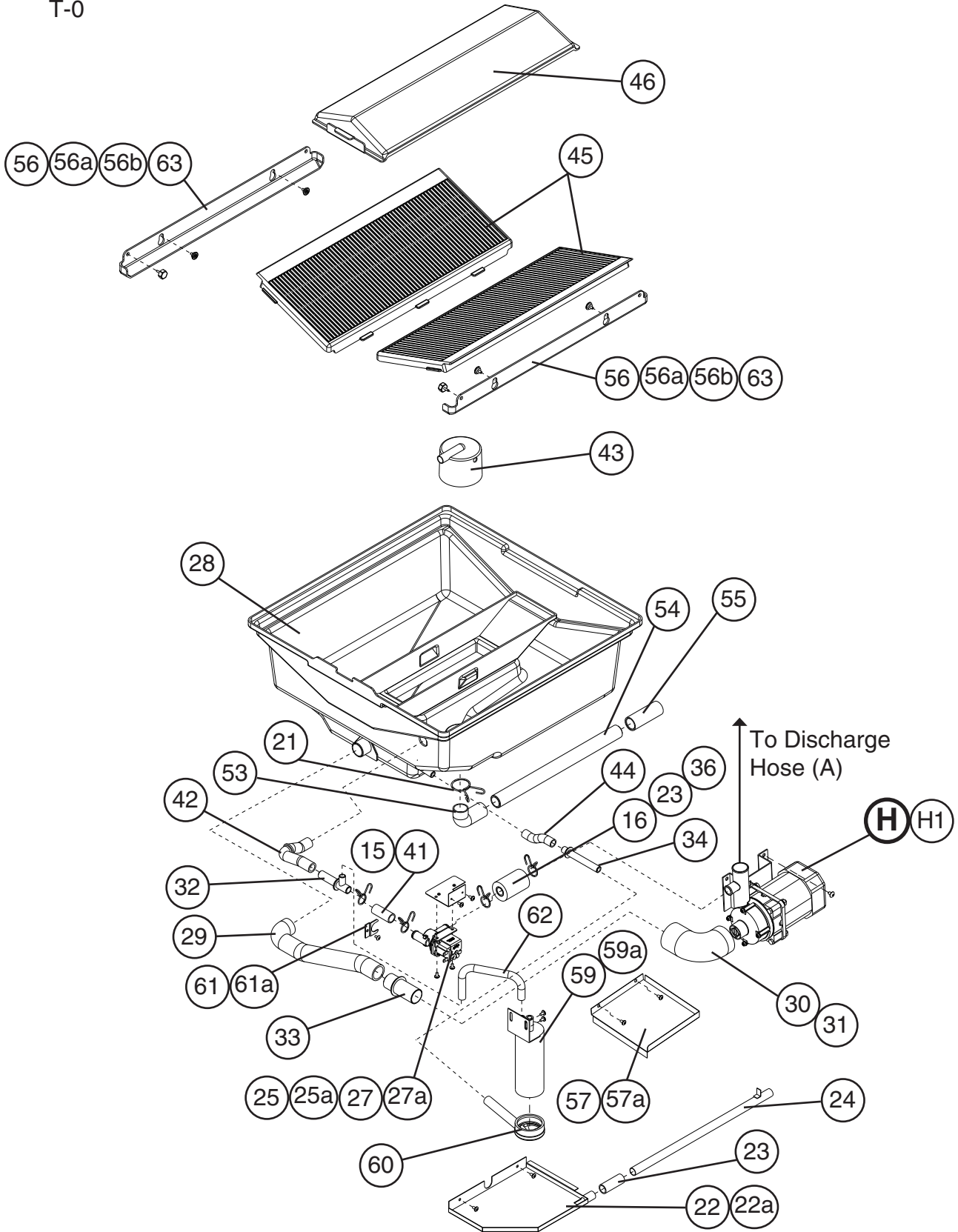
| Title: B. Refrigeration Circuit Model: KMS-1400MLH | | | | | | | | | | |
|--|-----------------------|--|-------------|-----------------|--|--|--|--|--|--|
| Index No. | Description | Material or Model Number | Part Number | Required Number | | | | | | |
| | | | | T-0 | | | | | | |
| 1 | Side Frame (A) | GS | 2A3230-01 | 1 | | | | | | |
| 1a | Truss Head Screw | 4x8, SS | 7C32-0408 | 4 | | | | | | |
| 2 | Side Frame (B) | GS | 3A3256-01 | 1 | | | | | | |
| 2a | Truss Head Screw | 4x8, SS | 7C32-0408 | 2 | | | | | | |
| 3 | Front Frame | GS | 3A3257-01 | 1 | | | | | | |
| 3a | Truss Head Screw | 4x8, SS | 7C32-0408 | 4 | | | | | | |
| 4 | Rear Panel | GS; See "A. Ice Cuber Assembly," B3, for mounting screws | 2A4452-01 | 1 | | | | | | |
| 4a | Truss Head Screw | 4x8, SS | 7C32-0408 | 1 | | | | | | |
| 5 | Evaporator | - | 2A4531G01 | 1 | | | | | | |
| 6 | Frame Seal | EPDM BLACK | 323925-01 | 4 | | | | | | |
| 6a | Truss Head Screw | 4x8, SS | 7C32-0408 | 4 | | | | | | |
| 7 | Rubber Tube (A) | - | 323974-01 | 1 | | | | | | |
| 8 | Insulation | - | 436597-01 | 1 | | | | | | |
| 9 | Insulation Holder | - | 3A0979-01 | 1 | | | | | | |
| 9a | T2 Screw | 4x8, SS | 7P32-0408 | 2 | | | | | | |
| 10 | Expansion Valve | - | 4A1482-01 | 2 | | | | | | |
| 11 | Expansion Valve Cover | - | 3A0944-01 | 2 | | | | | | |
| 12 | Strainer | - | 441569-02 | 1 | | | | | | |
| 13 | Valve Body - Hot Gas | - | 4A3978-01 | 1 | | | | | | |
| 14 | Coil - Valve | - | 4A3277-01 | 2 | | | | | | |
| 14a | Bolt | - | 4A3277F01 | 2 | | | | | | |
| 14b | Truss Head Screw | 4x8, SS | 7C32-0408 | 4 | | | | | | |
| 15 | Valve Body - Line | - | 4A3276-01 | 1 | | | | | | |
| 16 | Elbow | 107CR 1/2x3/8 | 4A1059-01 | 1 | | | | | | |
| 17 | Bracket / Coil | GS; See "A. Ice Cuber Assembly," B1, for mounting screws | 4A3890-01 | 2 | | | | | | |
| 18 | Drier | - | 4A2663-01 | 1 | | | | | | |
| 19 | Nylon Tie | PLWP3H-TL | 8911-0301 | 1 | | | | | | |
| 20 | Check Valve | SKC 30888 | 4A1373-01 | 2 | | | | | | |
| 21 | Coupling (male) | 5782-8-10 | 434072-01 | 1 | | | | | | |
| 22 | Tube Holder - L | GS; See "A. Ice Cuber Assembly," B2, for mounting screws | 438245-01 | 1 | | | | | | |
| 23 | Coupling | 5782-10-11 | 4A3826-01 | 1 | | | | | | |

| Title: B. Refrigeration Circuit Model: KMS-1400MLH | | | | | | | | | | |
|--|--------------------------|--|-------------|-----------------|--|--|--|--|--|--|
| Index No. | Description | Material or Model Number | Part Number | Required Number | | | | | | |
| | | | | T-0 | | | | | | |
| 24 | Tube Holder - L | GS; See "A. Ice Cuber Assembly," B2, for mounting screws | 438245-02 | 1 | | | | | | |
| 25 | Service Valve | - | 4A3420-01 | 2 | | | | | | |
| 25a | Hex Head Tapping Screw | 1/4x20x1/2 | 7B0311412 | 2 | | | | | | |
| 26 | Bracket - Service Valve | GS | 4A3892-01 | 2 | | | | | | |
| 26a | T2 Screw | 4x8, SS | 7P32-0408 | 4 | | | | | | |
| 27 | Copper Tube (A) | - | 3A4629G01 | 1 | | | | | | |
| 28 | Copper Tube (B) | - | 4A3555-01 | 1 | | | | | | |
| 29 | Copper Tube (C) | - | 3A4734G01 | 1 | | | | | | |
| 30 | Copper Tube (D) | - | 3A3259G01 | 1 | | | | | | |
| 31 | Copper Tube (E) | - | 4A3556G01 | 1 | | | | | | |
| 32 | Copper Tube (F) | - | 3A4700G01 | 1 | | | | | | |
| 33 | Copper Tube (G) | - | 3A4701G01 | 1 | | | | | | |
| 34 | Copper Tube (J) | - | 3A4756G01 | 1 | | | | | | |
| 35 | Heat Exchanger | - | 3A3263G01 | 1 | | | | | | |
| 36 | Cable Tie | - | 8911-0200 | 10 | | | | | | |
| 37 | Holder - Expansion Valve | - | 3A0107-01 | 2 | | | | | | |
| 38 | Holder Thermistor | COPPER | 438247-01 | 1 | | | | | | |
| 39 | Insulation - Thermistor | - | 427441-01 | 1 | | | | | | |
| 40 | Hose Clamp | - | 443461-02 | 2 | | | | | | |
| 41 | Thermistor | L=1700 | 429006-05 | 1 | | | | | | |
| 42 | Insulation Tube | L=182 | 7762-2943 | 1 | | | | | | |
| 43 | Insulation Tube | L=70 | 7762-2943 | 1 | | | | | | |
| 44 | Insulation Tube | L=165 | 7762-2943 | 1 | | | | | | |

C. Water Circuit
1/2
KMS-1400MLH
T-0



C. Water Circuit
2/2
KMS-1400MLH
 T-0

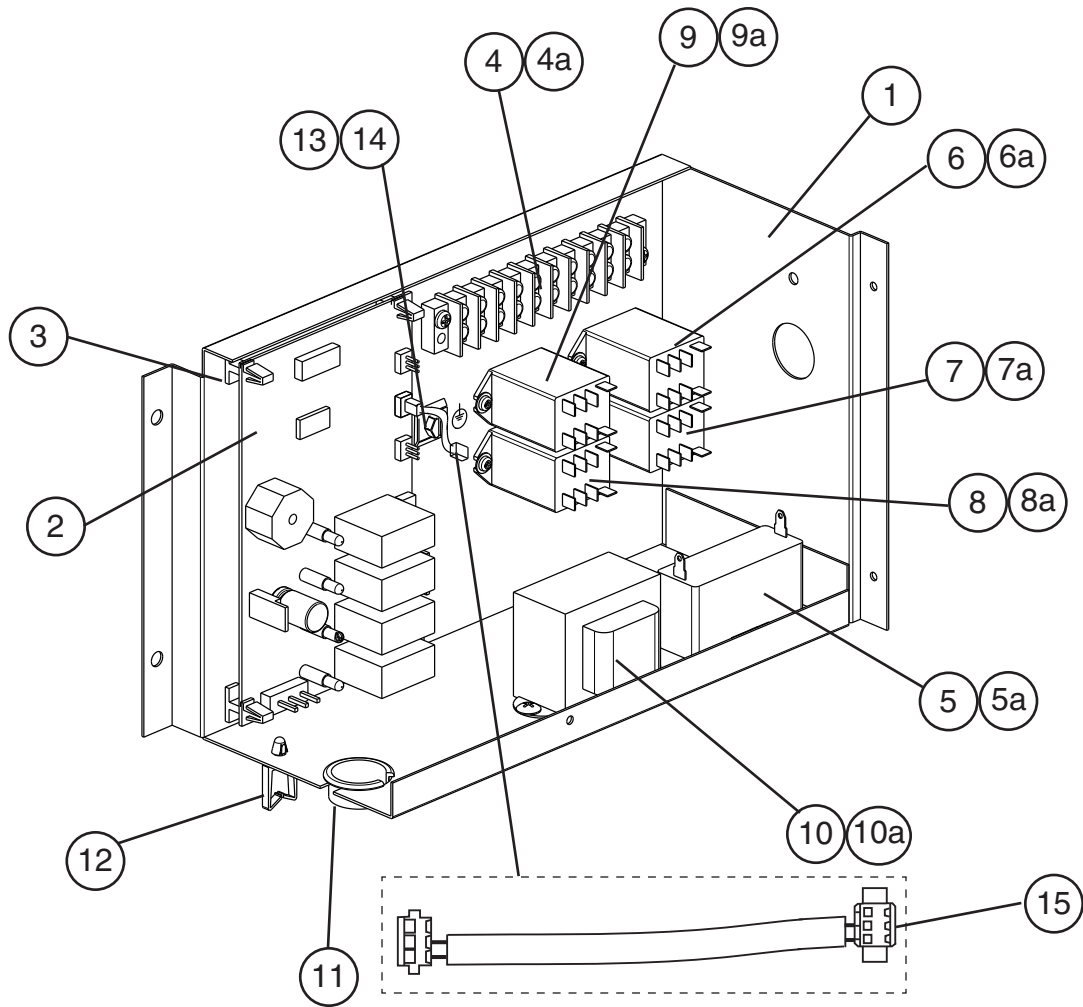


| Title: C. Water Circuit Model: KMS-1400MLH | | | | | | | | | | |
|--|---------------------------------|--------------------------|-------------|-----------------|--|--|--|--|--|--|
| Index No. | Description | Material or Model Number | Part Number | Required Number | | | | | | |
| | | | | T-0 | | | | | | |
| H | Pump Motor Assembly | HS-0183 | 2A3237A01 | 1 | | | | | | |
| H1 | Truss Head Screw | 5x8, SS | 7C32-0508 | 2 | | | | | | |
| 1 | Water Supply Pipe | - | 3A3273G01 | 1 | | | | | | |
| 1a | T2 Screw | 4x8, SS | 7P32-0408 | 2 | | | | | | |
| 2 | Rubber Gasket | - | 413854-03 | 2 | | | | | | |
| 3 | Water Valve Bracket | GS | 3A3274-01 | 2 | | | | | | |
| 3a | Truss Head Screw | 4x8, SS | 7C32-0408 | 2 | | | | | | |
| 4 | Water Valve (harvest and fill) | J248-032 | 3U0111-02 | 2 | | | | | | |
| 5 | Vinyl Hose | L=40 | 7716-1216 | 1 | | | | | | |
| 6 | Distributor (A) | - | 4A3528-01 | 1 | | | | | | |
| 7 | Distributor (B) | - | 3A3239-01 | 1 | | | | | | |
| 8 | Distributor (C) | - | 4A3530-01 | 1 | | | | | | |
| 9 | Flange | - | 439267-02 | 1 | | | | | | |
| 10 | Distributor Hose (A) | - | 325738-01 | 1 | | | | | | |
| 11 | Distributor Hose (B) | - | 325738-02 | 1 | | | | | | |
| 12 | Distributor Hose (C) | - | 325739-02 | 2 | | | | | | |
| 13 | Joint Pipe | - | 439297-02 | 1 | | | | | | |
| 14 | Hose Clamp | 13.5mm, SS | 427443-07 | 6 | | | | | | |
| 15 | Hose Clamp | 18mm, SS | 427443-05 | 7 | | | | | | |
| 16 | Hose Clamp | 20mm, SS | 427443-06 | 4 | | | | | | |
| 17 | Hose Clamp | 25mm, SS | 427443-03 | 3 | | | | | | |
| 18 | Hose Clamp | 32mm, SS | 427443-09 | 8 | | | | | | |
| 19 | Spray Tube | - | 437049G04 | 6 | | | | | | |
| 20 | Spray Guide | - | 2A4282-03 | 6 | | | | | | |
| 21 | Hose Clamp | 27mm, SS | 427443-08 | 1 | | | | | | |
| 22 | Pump Drain | SS | 3A3275G01 | 1 | | | | | | |
| 22a | Truss Head Screw | 4x8, SS | 7C32-0408 | 2 | | | | | | |
| 23 | Vinyl Hose | L=50 | 7716-1519 | 2 | | | | | | |
| 24 | Drain Pipe | SS | 4A3568G01 | 1 | | | | | | |
| 25 | Solenoid Valve (wash and drain) | - | 4A3722-01 | 2 | | | | | | |
| 25a | Truss Head Screw | 4x8, SS | 7C32-0408 | 4 | | | | | | |
| 26 | Drain Valve Bracket (A) | GS | 4A3569-01 | 1 | | | | | | |
| 26a | Truss Head Screw | 4x8, SS | 7C32-0408 | 2 | | | | | | |
| 27 | Drain Valve Bracket (B) | GS | 4A3570-01 | 1 | | | | | | |
| 27a | Truss Head Screw | 4x8, SS | 7C32-0408 | 2 | | | | | | |
| 28 | Tank | - | 1A1146G01 | 1 | | | | | | |
| 29 | Suction Hose (A) | - | 3A3234-01 | 1 | | | | | | |
| 30 | Suction Hose (B) | - | 4A3534-01 | 1 | | | | | | |
| 31 | Insulation Tube | L=125 | 7762-3555 | 1 | | | | | | |
| 32 | Pipe (A) - Evaporator Case | - | 4A3524-01 | 1 | | | | | | |
| 33 | Pipe (C) - Evaporator Case | - | 4A3526-01 | 2 | | | | | | |
| 34 | Pipe (D) - Evaporator Case | - | 4A3527-01 | 1 | | | | | | |
| 35 | Pipe (E) - Evaporator Case | - | 4A3765-01 | 1 | | | | | | |
| 36 | Insulation Tube | L=60 | 7762-2040 | 1 | | | | | | |
| 37 | Vinyl Hose | L=320 | 7716-1519 | 1 | | | | | | |

Title: **C. Water Circuit** Model: **KMS-1400MLH**

| Index No. | Description | Material or Model Number | Part Number | Required Number | | | | | | | | | |
|-----------|--------------------------|--------------------------|-------------|-----------------|--|--|--|--|--|--|--|--|--|
| | | | | T-0 | | | | | | | | | |
| 38 | Hose - Inlet | - | 3A3496-01 | 1 | | | | | | | | | |
| 39 | Insulation Tube | L=200 | 7762-2030 | 1 | | | | | | | | | |
| 40 | Hose - Outlet | - | 3A3497-01 | 1 | | | | | | | | | |
| 41 | Vinyl Hose | L=45 | 7716-1519 | 1 | | | | | | | | | |
| 42 | Drain Hose - Overflow | - | 4A3536-01 | 1 | | | | | | | | | |
| 43 | Overflow Cap | - | 2A3215-01 | 1 | | | | | | | | | |
| 44 | Vinyl Hose | L=80 | 7716-1216 | 1 | | | | | | | | | |
| 45 | Cube Guide | - | 1A0966-01 | 2 | | | | | | | | | |
| 46 | Separator - Tank | - | 2A3220-01 | 1 | | | | | | | | | |
| 47 | Discharge Hose (A) | - | 4A3532-01 | 1 | | | | | | | | | |
| 48 | Discharge Hose (B) | - | 4A3533-01 | 1 | | | | | | | | | |
| 49 | Insulation Tube | L=230 | 7762-3555 | 1 | | | | | | | | | |
| 50 | Vinyl Hose | L=124 | 7716-2732 | 1 | | | | | | | | | |
| 51 | Inlet Hose | - | 4A3535-01 | 1 | | | | | | | | | |
| 52 | Flange | - | 4A3573-01 | 1 | | | | | | | | | |
| 53 | Drain Hose | - | 4A3537-01 | 1 | | | | | | | | | |
| 54 | PVC Pipe | - | 433509-03 | 1 | | | | | | | | | |
| 55 | Drain Hose | - | 434808-01 | 1 | | | | | | | | | |
| 56 | Side Separator | - | 3A3235-01 | 2 | | | | | | | | | |
| 56a | Collar | ABS WHITE | 435269-01 | 4 | | | | | | | | | |
| 56b | Flat Head T2 Screw | 4x12, SS | 7P22-0412 | 4 | | | | | | | | | |
| 57 | Motor Cover | GS | 4A3586-01 | 1 | | | | | | | | | |
| 57a | Truss Head Screw | 4x8, SS | 7C32-0408 | 2 | | | | | | | | | |
| 58 | Cable Tie | - | 8911-0200 | 1 | | | | | | | | | |
| 59 | Float Switch | - | 468264-01 | 1 | | | | | | | | | |
| 59a | Truss Head Screw | 4x8, SS | 7C32-0408 | 2 | | | | | | | | | |
| 60 | Connector - Float Switch | - | 3A4169-01 | 1 | | | | | | | | | |
| 61 | Pipe Stopper | GS | 4A3767-01 | 1 | | | | | | | | | |
| 61a | T2 Screw | 4x8, SS | 7P32-0408 | 1 | | | | | | | | | |
| 62 | Hose - Float | - | 4A3766-01 | 1 | | | | | | | | | |
| 63 | Thumbscrew | - | 415949G10 | 2 | | | | | | | | | |

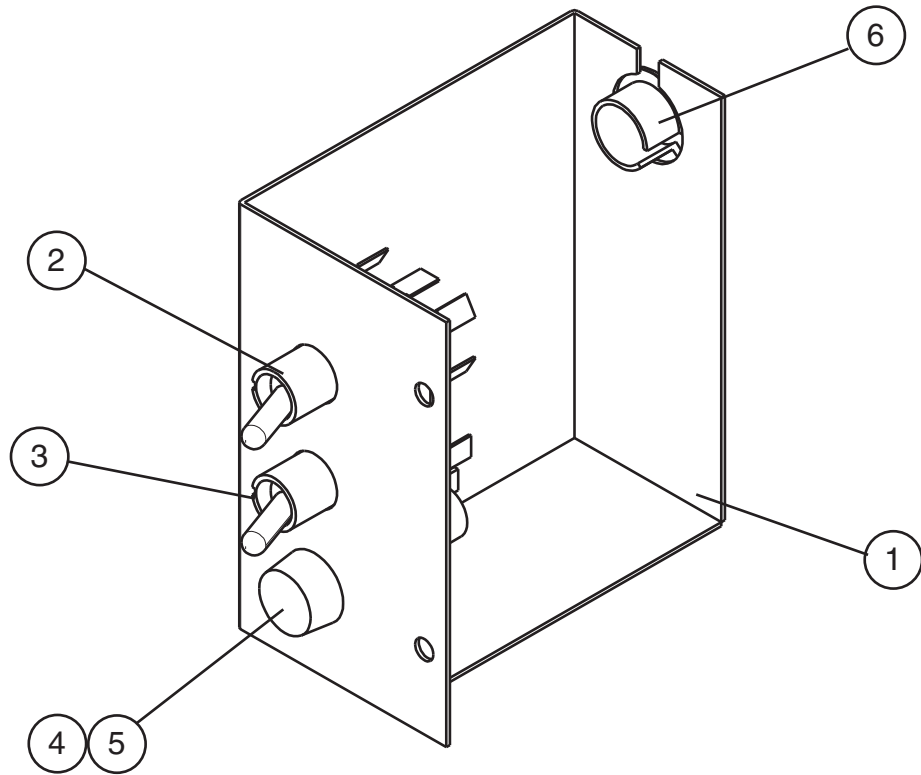
D. Control Box Assembly
KMS-1400MLH
 T-0



| Title: D. Control Box Assembly Model: KMS-1400MLH | | | | | | | | | | | | |
|---|--|--------------------------|-------------|-----------------|--|--|--|--|--|--|--|--|
| Index No. | Description | Material or Model Number | Part Number | Required Number | | | | | | | | |
| | | | | T-0 | | | | | | | | |
| 1 | Control Box | GS | 2A3234-01 | 1 | | | | | | | | |
| 2 | Control Board | - | 2A3792-01 | 1 | | | | | | | | |
| 3 | Board Support | CBLS37-M | 4A0336-03 | 4 | | | | | | | | |
| 4 | Terminal Block | - | 4A4201-01 | 1 | | | | | | | | |
| 4a | Pan Head Screw | 4x12, SS | 7C12-0412 | 2 | | | | | | | | |
| 5 | Capacitor | 10MFD 250VAC | 443192-01 | 1 | | | | | | | | |
| 5a | T2 Screw | 4x10, SS | 7P32-0410 | 1 | | | | | | | | |
| 6 | Relay - X1 Harvest / Water Valve | LY2F AC 120V | 406132-07 | 1 | | | | | | | | |
| 6a | Tapping Screw | 3x8 | 431415-01 | 2 | | | | | | | | |
| 7 | Relay - X2 Pump Out – Pump Motor & Drain Valve 2 | LY2F AC 120V | 406132-07 | 1 | | | | | | | | |

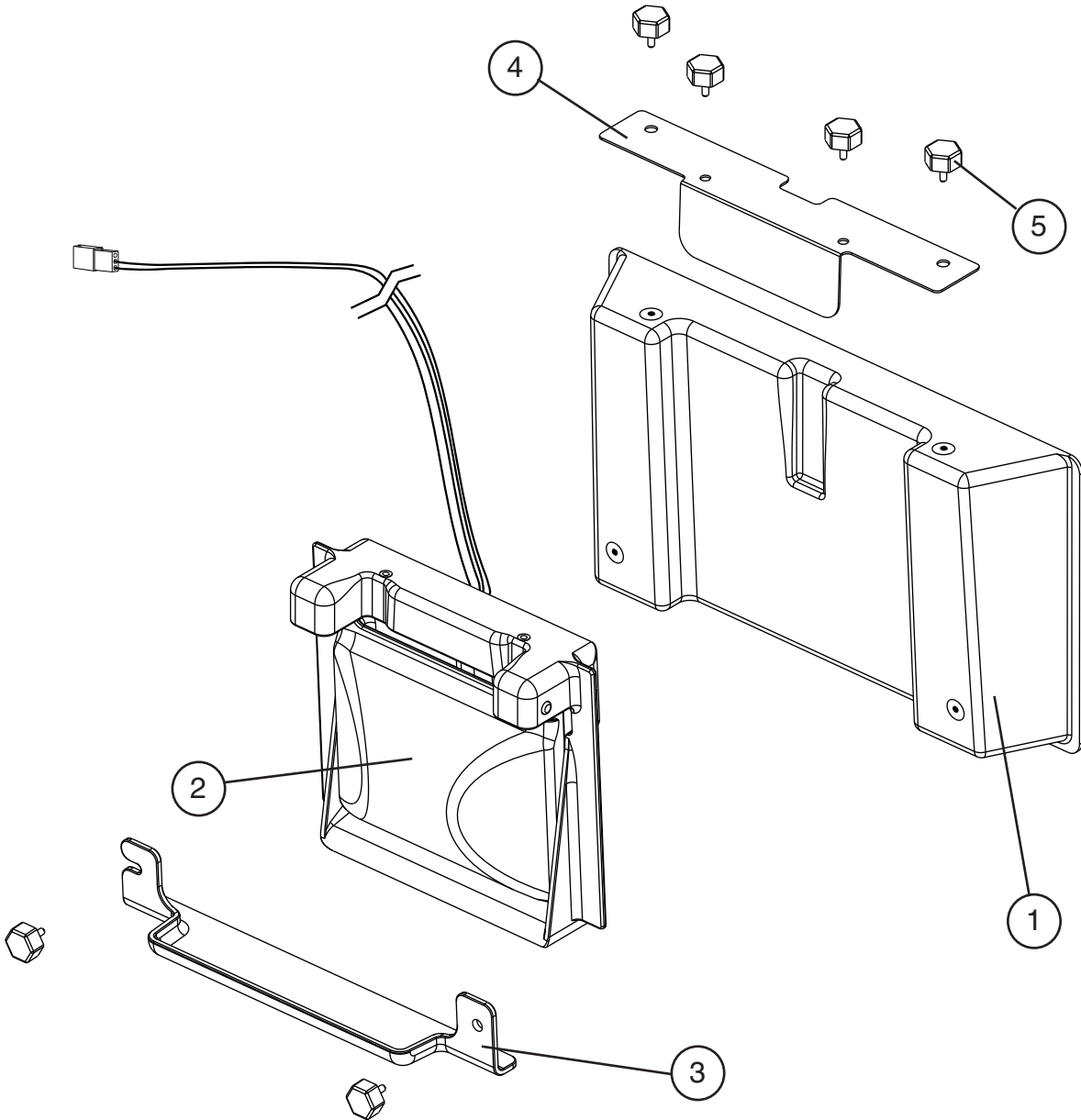
| Title: D. Control Box Assembly Model: KMS-1400MLH | | | | | | | | | | | | |
|---|-----------------------------------|--------------------------|-------------|-----|------------------------|--|--|--|--|--|--|--|
| Index No. | Description | Material or Model Number | Part Number | T-0 | Required Number | | | | | | | |
| | | | | | | | | | | | | |
| 7a | Tapping Screw | 3x8 | 431415-01 | 2 | | | | | | | | |
| 8 | Relay - X3 Drain Valve Lock Out 1 | LY2F AC 120V | 406132-07 | 1 | | | | | | | | |
| 8a | Tapping Screw | 3x8 | 431415-01 | 2 | | | | | | | | |
| 9 | Relay - X4 Drain Valve Lock Out 2 | LY2F AC 120V | 406132-07 | 1 | | | | | | | | |
| 9a | Tapping Screw | 3x8 | 431415-01 | 2 | | | | | | | | |
| 10 | Transformer | - | 3A0172-01 | 1 | | | | | | | | |
| 10a | T2 Screw | 4x8, SS | 7P32-0408 | 2 | | | | | | | | |
| 11 | Bushing | OCB-1000 | 428394-05 | 1 | | | | | | | | |
| 12 | Clamp | - | 4A0338-02 | 1 | Dwg chg'd to match BOM | | | | | | | |
| 13 | Square Washer | BRASS | 433537-02 | 1 | Dwg chg'd to match BOM | | | | | | | |
| 14 | Screw - Grounding | 5x8 | 433304-02 | 1 | | | | | | | | |
| 15 | Wire Harness | - | 4A2200G04 | 1 | | | | | | | | |

E. Switch Box Assembly
KMS-1400MLH
 T-0



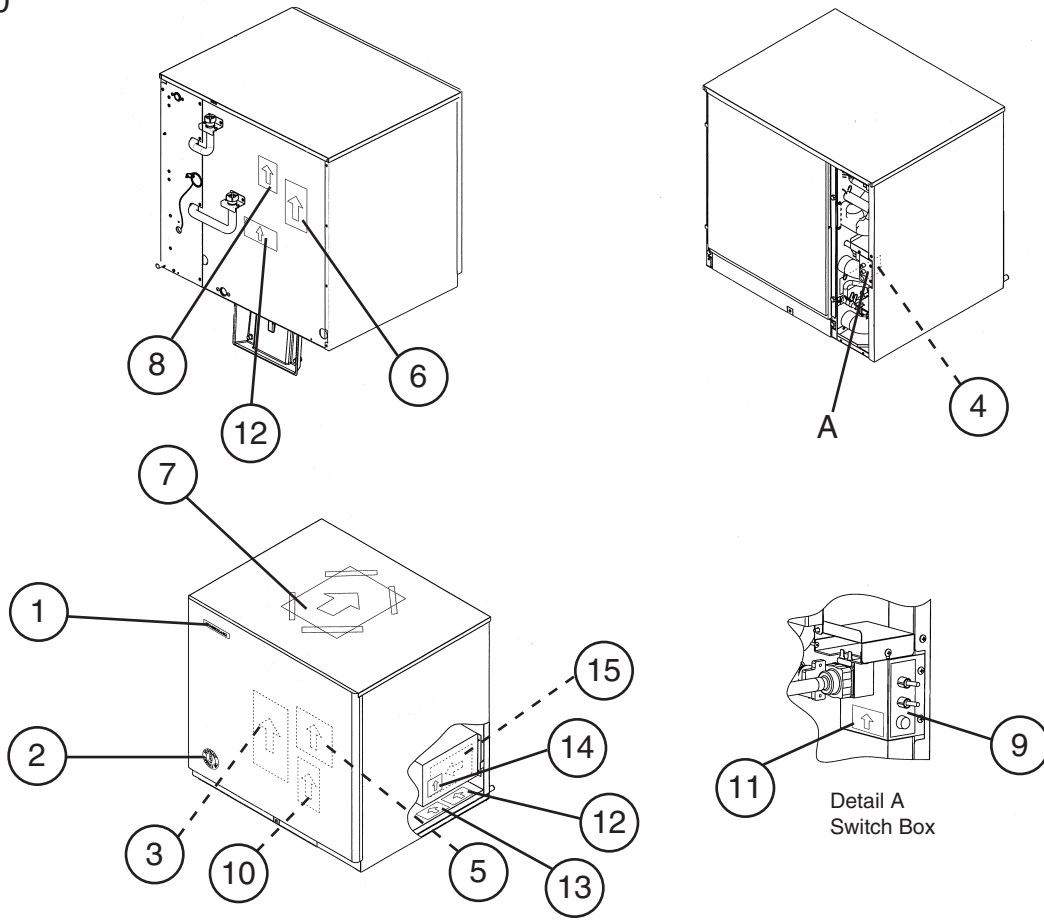
| Title: E. Switch Box Assembly Model: KMS-1400MLH | | | | | | | | | | |
|--|---------------|--------------------------|-------------|-----------------|--|--|--|--|--|--|
| Index No. | Description | Material or Model Number | Part Number | Required Number | | | | | | |
| | | | | T-0 | | | | | | |
| 1 | Switch Box | GS | 3A3277-01 | 1 | | | | | | |
| 2 | Toggle Switch | 8966K84 | 443119-01 | 1 | | | | | | |
| 3 | Toggle Switch | 8966K211 | 4A0985-01 | 1 | | | | | | |
| 4 | Fuse Holder | HTB82I | 4A3449-01 | 1 | | | | | | |
| 5 | Fuse | AGC-10 250V 10A | 4A0893-07 | 2 | | | | | | |
| 6 | Bushing | OCB-750 | 428394-01 | 1 | | | | | | |

F. Bin Switch Unit
KMS-1400MLH
 T-0



| Title: F. Bin Switch Unit Model: KMS-1400MLH | | | | | | | | | | | | |
|--|--------------------|--------------------------|-------------|-----------------|--|--|--|--|--|--|--|--|
| Index No. | Description | Material or Model Number | Part Number | Required Number | | | | | | | | |
| | | | | T-0 | | | | | | | | |
| 1 | Mount - Bin Switch | - | 3A3278G01 | 1 | | | | | | | | |
| 2 | Bin Control | - | 464574-01 | 1 | | | | | | | | |
| 3 | Switch Guide | - | 3A2643-01 | 1 | | | | | | | | |
| 4 | Switch Cover | SS | 4A3580-01 | 1 | | | | | | | | |
| 5 | Thumbscrew | - | 415949G10 | 6 | | | | | | | | |

G. Label Location
KMS-1400MLH
T-0

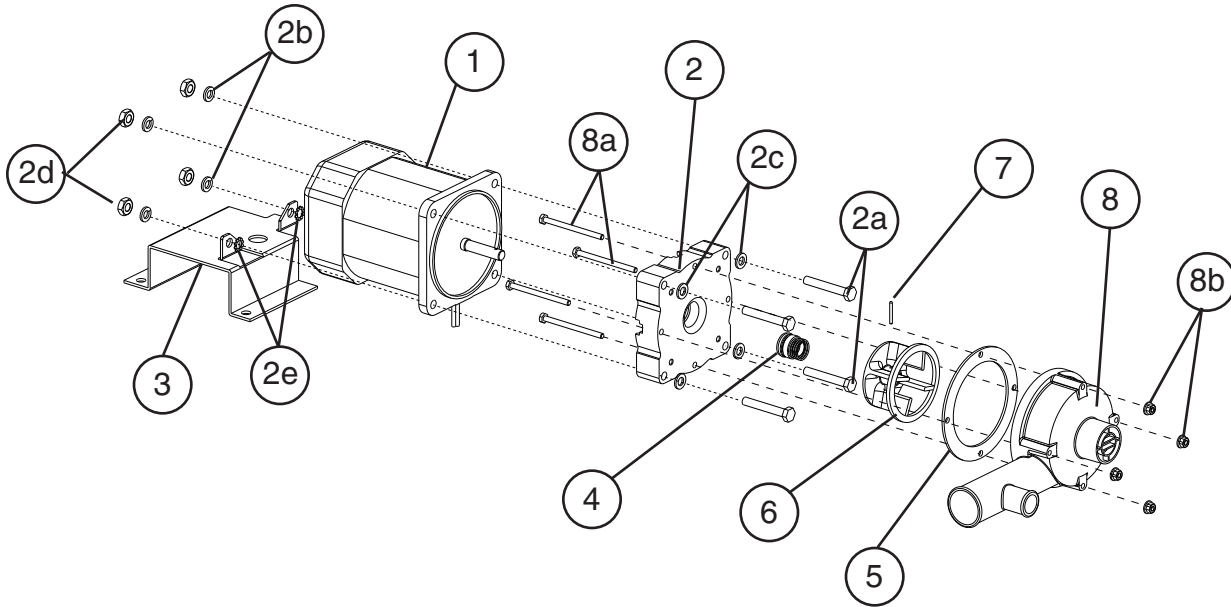


| Title: G. Label Location Model: KMS-1400MLH | | | | | | | | | | | | | |
|---|--------------------------|--------------------------|-------------|-----------------|--|--|--|--|--|--|--|--|--|
| Index No. | Description | Material or Model Number | Part Number | Required Number | | | | | | | | | |
| | | | | T-0 | | | | | | | | | |
| 1 | Emblem | - | 4A0560-01 | 1 | | | | | | | | | |
| 2 | Label - Penguin - HA (R) | - | 4A0526-01 | 1 | | | | | | | | | |
| 3 | Maintenance Label | - | 2A3296-01 | 1 | | | | | | | | | |
| 4 | Caution Label (K) | - | 439150-01 | 1 | | | | | | | | | |
| 5 | Wiring Label | - | 2A4557-01 | 1 | | | | | | | | | |
| 6 | Nameplate | - | 2A3298-03 | 1 | | | | | | | | | |
| 7 | Instruction Sheet | - | 2A4597-01 | 1 | | | | | | | | | |
| 8 | Instruction Label | - | 444575-01 | 1 | | | | | | | | | |
| 9 | Manual Label | - | 3A3331-01 | 1 | | | | | | | | | |
| 10 | Rating Label | - | 2A3300-03 | 1 | | | | | | | | | |
| 11 | Label - Fuse | - | 4A2817-01 | 1 | | | | | | | | | |
| 12 | Label - 404A | - | 4A0960-01 | 2 | | | | | | | | | |
| 13 | Caution Label | - | 4A4209-01 | 1 | | | | | | | | | |
| 14 | Label - Alarm | - | 4A3517-01 | 1 | | | | | | | | | |
| 15 | Label - Control Board | - | 3A4784-01 | 1 | | | | | | | | | |

H. Pump Motor Assembly

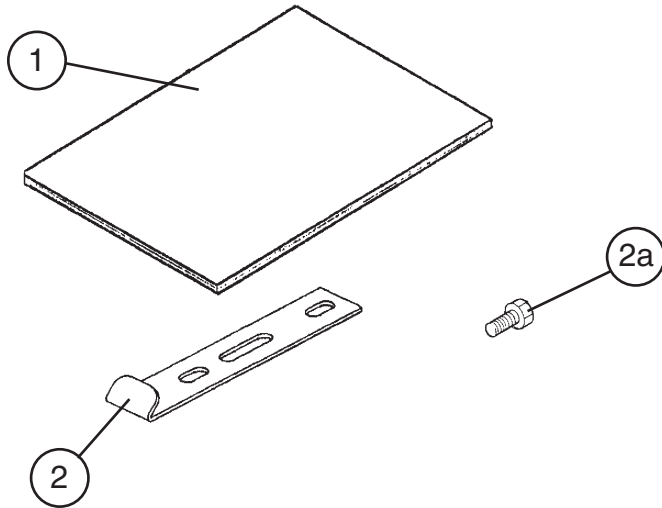
KMS-1400MLH

T-0



| Title: H. Pump Motor Assembly Model: KMS-1400MLH | | | | | Required Number | | | | | | | | |
|--|--------------------|--------------------------|-------------|-----|-----------------|--|--|--|--|--|--|--|--|
| Index No. | Description | Material or Model Number | Part Number | T-0 | | | | | | | | | |
| 1 | Pump Motor | M91A60SP201 | 2U0106-01 | 1 | | | | | | | | | |
| 2 | Pump Flange | - | 215662-01 | 1 | | | | | | | | | |
| 2a | Hex Head Bolt | 6x40, SS | 7B02-0640 | 4 | | | | | | | | | |
| 2b | Split Lock Washer | M6, SS | 7L22-0600 | 4 | | | | | | | | | |
| 2c | Flat Washer | M6, SS | 7W22-0600 | 4 | | | | | | | | | |
| 2d | Hex Nut | M6, SS | 7N12-0600 | 4 | | | | | | | | | |
| 2e | Tooth Washer | M6, SS | 7R22-0600 | 2 | | | | | | | | | |
| 3 | Pump Motor Bracket | SS | 3A3252-01 | 1 | | | | | | | | | |
| 4 | Mechanical Seal | - | 4A3820-01 | 1 | | | | | | | | | |
| 5 | Packing | NSF | 428547-01 | 1 | | | | | | | | | |
| 6 | Impeller | ABS WHITE | 436584-01 | 1 | | | | | | | | | |
| 7 | Pin | - | 4A0648-01 | 1 | | | | | | | | | |
| 8 | Pump Housing | - | 2A3214-01 | 1 | | | | | | | | | |
| 8a | Hex Head Bolt | 4x55, SS | 7B02-0455 | 4 | | | | | | | | | |
| 8b | Hex Flange Nut | M4, SS | 7J02-0400 | 4 | | | | | | | | | |

J. Accessories and Packaging
KMS-1400MLH
 T-0



| Title: J. Accessories and Packaging Model: KMS-1400MLH | | | | | | | | | | |
|--|--------------------|--------------------------|-------------|-----------------|--|--|--|--|--|--|
| Index No. | Description | Material or Model Number | Part Number | Required Number | | | | | | |
| | | | | T-0 | | | | | | |
| 1 | Instruction Manual | - | 91A1YD10A | 1 | | | | | | |
| 2 | Universal Brace | GS | 4A0363-01 | 1 | | | | | | |
| 2a | Hex Bolt | 5x12 SS | 7B02-0512 | 1 | | | | | | |
| | Packaging | | 2A4083A01 | | | | | | | |