

NO. 71141

ISSUED: MARCH 24, 1999

REVISED: JAN. 21, 2002



**HOSHIZAKI  
MODULAR CRESCENT CUBER**

**MODELS**

**KM-900MAF**

**KM-900MWF**

**KM-900MRF**

**KM-900MRF3**

**(FINAL) PARTS LIST**

<b>KM-900MAF</b>	J-0	March, 1999
	K-0	Dec., 1999
	L-0	Dec., 2000

<b>KM-900MWF</b>	J-0	April, 1999
	K-0	Dec., 1999
	L-0	Jan., 2001

<b>KM-900MRF</b>	J-0	March, 1999
	K-0	Dec., 1999
	L-0	Dec., 2000

<b>KM-900MRF3</b>	K-0	Dec., 1999
	L-0	Jan., 2001

## MATERIAL ABBREVIATIONS

### ALUMINUM

AL = Aluminum

### COPPER

CU = Copper

### PLASTIC

ABS = Acrylonitrile -butadiene - styrene  
 AC = Polyacetal  
 EVA = Ethylene vinyl acetate  
 PA = Polyamide = Nylon  
 PC = Polycarbonate  
 PE = Polyethylene  
 PES = Polyester  
 PETP = Polyethylene terephthalate = Tetlon  
 PP = Polypropylene  
 PS = Polystyrene  
 PTFE = Polytetrafluoroethylene = Teflon  
 PUR = Polyurethane  
 PVC = Polyvinyl chloride

### RUBBER

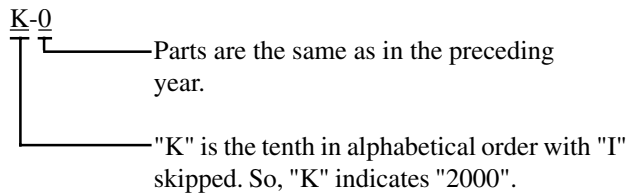
VN = Vinyl Nitrile  
 EPDM = EP rubber  
 NBR = Nitrile butadiene rubber  
 NR = Natural rubber  
 NP = Neoprene  
 SI.R = Silicone rubber  
 SY.R = Synthetic rubber  
 EPH = Epichlorohydrin

### STEEL

G.S = Galvanized steel  
 S.S = Stainless steel  
 PS = Plated steel  
 PAS = Primed steel

## AUXILIARY CODE

Ex.1

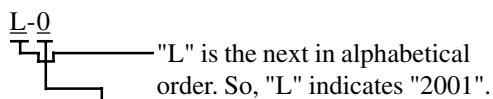


**(Note)** - = Part deleted.

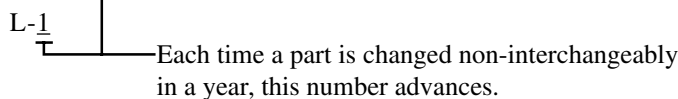
x = Part deleted and replaced by "o" part.

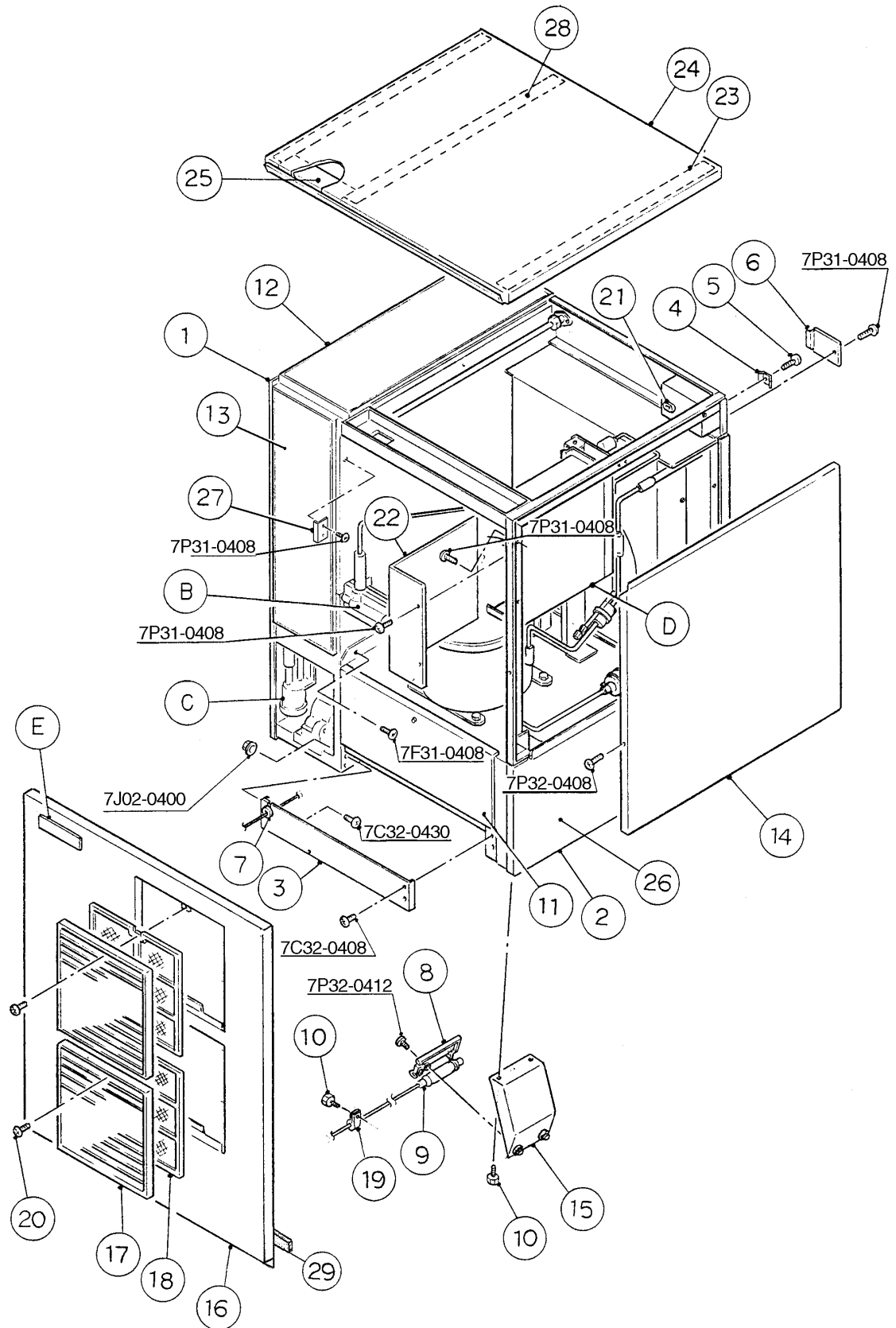
o = New part for "x" in the same auxiliary code.

Ex.2

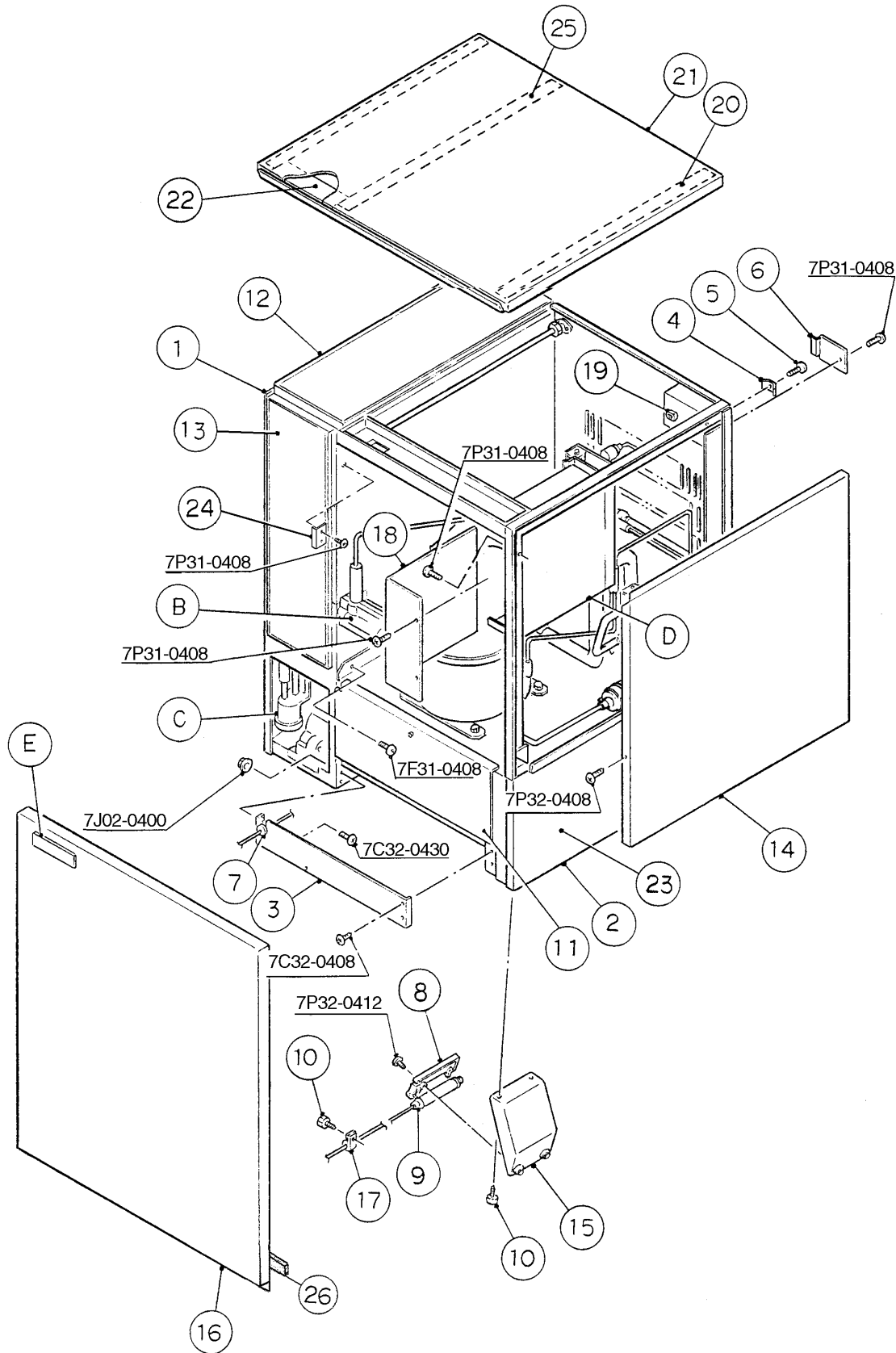


Ex.3

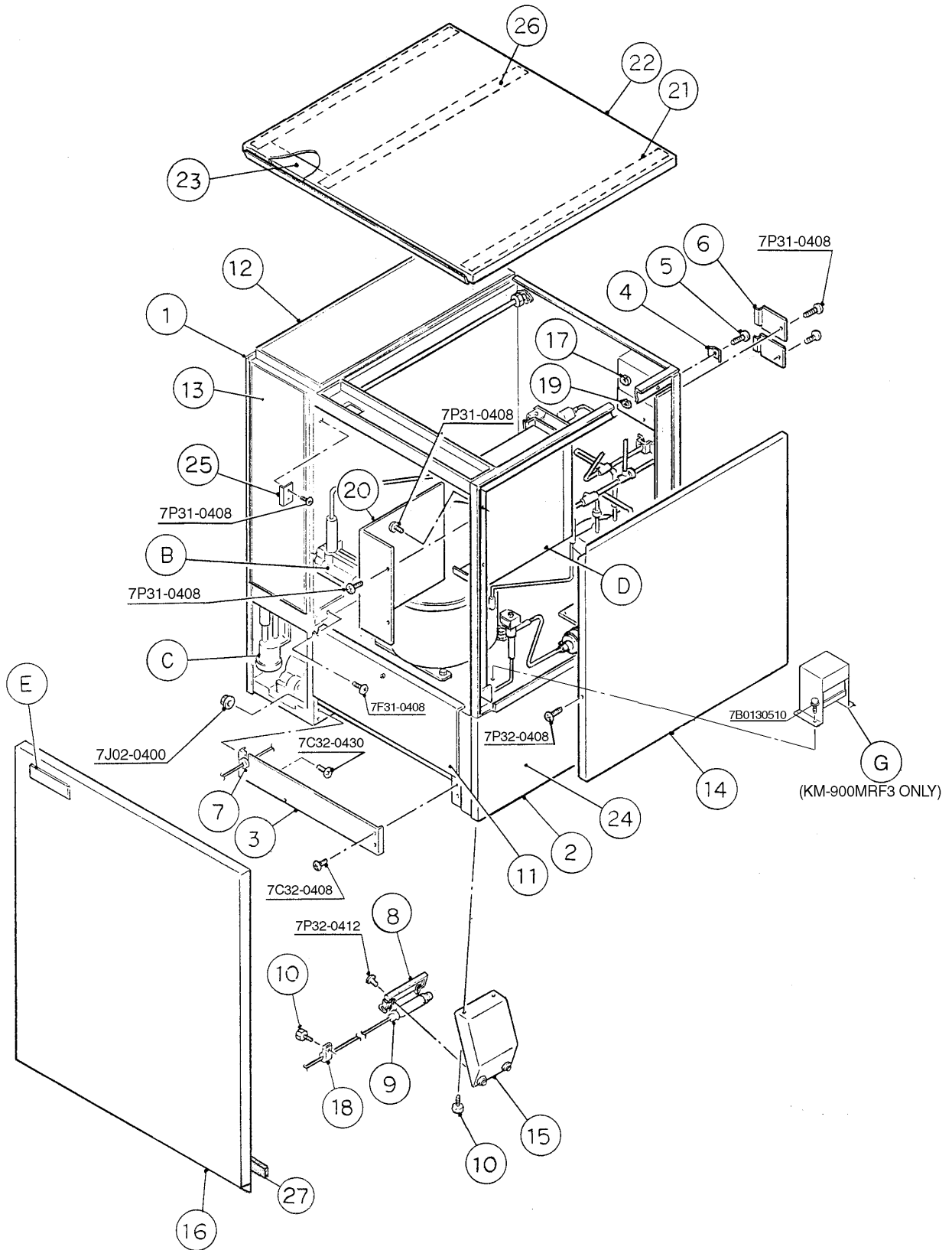




MODEL: KM-900MAF		TITLE: A. ICE CUBER ASSEMBLY					
INDEX NO.	DESCRIPTION	MATERIAL OR MODEL NUMBER	PART NUMBER	REQ'D NUMBER			
				J-0	K-0	L-0	
B	REFRIGERATION CIRCUIT	-	1A0346A01	1	1	1	
C	WATER CIRCUIT	HS-1206	1A0283A03	1	1	1	
D	CONTROL BOX ASSEMBLY	-	2A1377A01	1	1	1	
E	LABEL LOCATION	-	3A1164A01	1	1	1	
1	EVAP. CASE	HS-1011	1A0277G02	1	1	1	
2	BASE	-	1A0377G01	1	1	1	
3	FRONT FRAME	S.S	322617-01	1	1	1	
4	SQUARE WASHER	BRASS	433537-02	1	1	1	
5	SCREW - GROUNDING	BRASS	433304-02	1	1	1	
6	JUNCTION BOX COVER	G.S	433410-01	1	1	1	
7	CAPILLARY RING	EP RUBBER	425307-01	1	1	1	
8	BULB HOLDER	ABS	328919-01	1	1	1	
9	SPACER	PE	443545-01	2	2	2	
10	THUMBSCREW	ABS, S.S	415949G01	3	3	3	
11	BASE COVER	S.S	322618G01	1	1	1	
12	TOP INSULATION	PP, PUR	215730G01	1	1	1	
13	FRONT INSULATION	PP, PUR	215731G02	1	1	1	
14	SIDE PANEL (R)	S.S	211811G02	1	1	1	
15	BULB HOLDER (C)	ABS	3A0218G01	1	1	1	
16	FRONT PANEL	S.S	212629G02	1	1	1	
17	LOUVER (B)	-	103121-03	2	2	2	
18	AIR FILTER (B)	-	208283G03	2	2	2	
19	STRAP	NBR, NW372	435487-01	1	1	1	
20	TAPPING SCREW ( BLACK)	STEEL,4x8	433954-01	2	2	2	
21	BUSHING	SR-34-2	420472-05	1	1	1	
22	CONTROL BOX COVER	G.S	3A0174-01	1	1	1	
23	GASKET	(324859A02)	427014-04	2	2	2	
24	TOP PANEL	S.S	213543-01	1	1	1	
25	INSULATION	PE FOAM	438012-01	1	1	1	
26	SIDE PANEL (R) BASE	S.S	2A0317-01	1	1	1	
27	BARRIER - INSULATION	G.S	4A1167-01	1	1	1	
28	GASKET (A)	—	324859-03	1	1	1	
29	GASKET	L=762	4A0808L02			1	



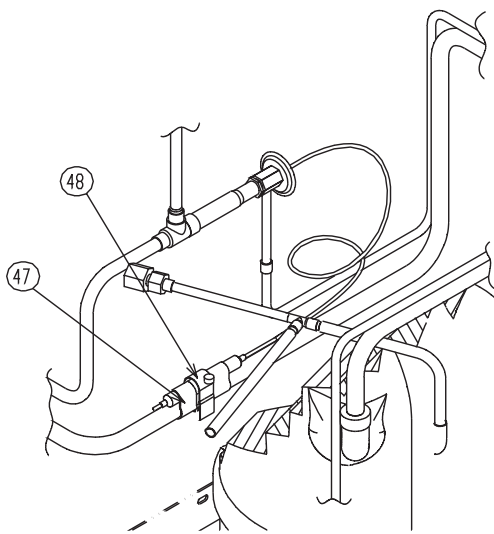
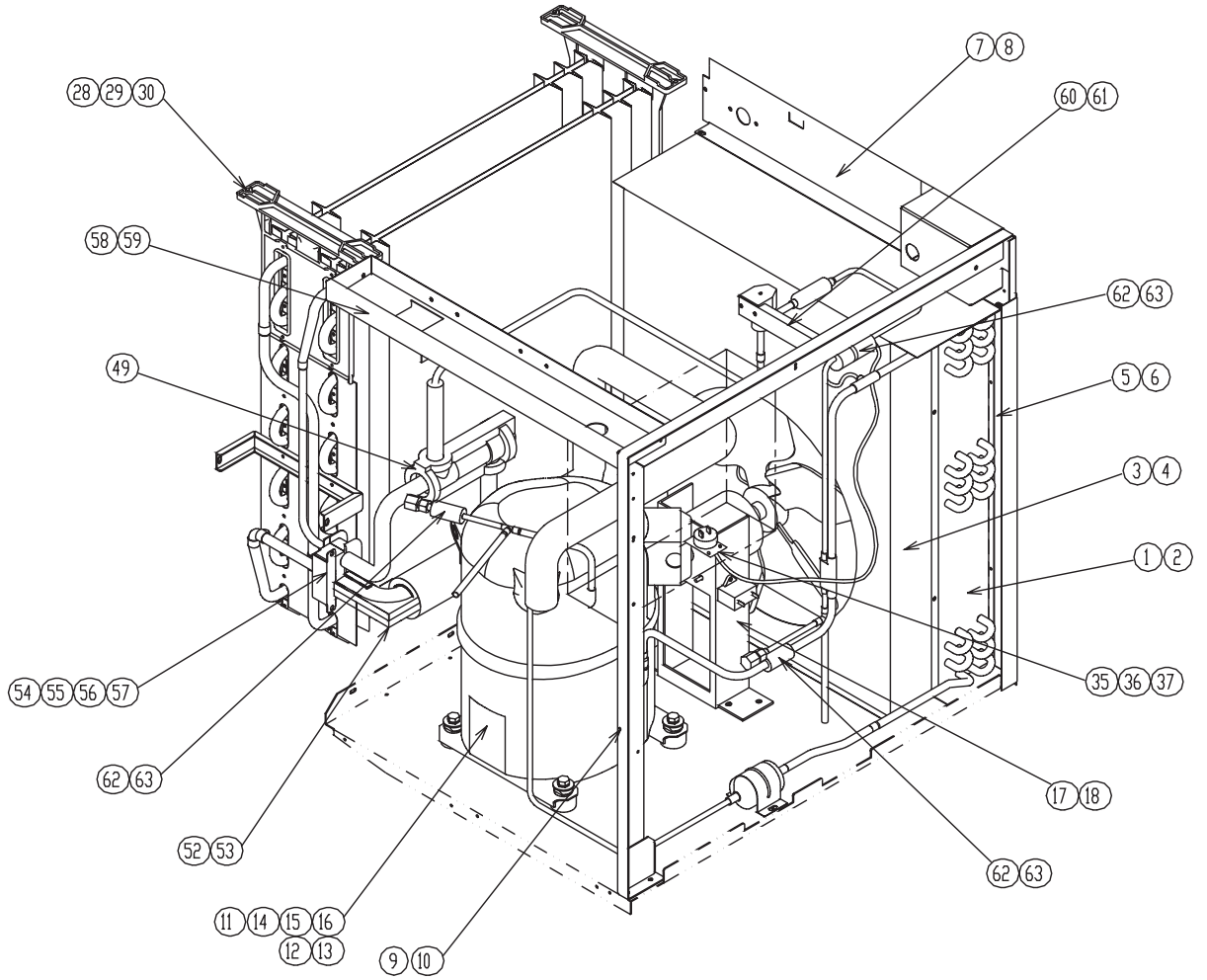
MODEL: KM-900MWF		TITLE: A. ICE CUBER ASSEMBLY					
INDEX NO.	DESCRIPTION	MATERIAL OR MODEL NUMBER	PART NUMBER	REQ'D NUMBER			
				J-0	K-0	L-0	
B	REFRIGERATION CIRCUIT	-	1A0347A01	1	1	1	
C	WATER CIRCUIT	HS-1206	1A0283A03	1	1	1	
D	CONTROL BOX ASSEMBLY	-	2A1377A02	1	1	1	
E	LABEL LOCATION	-	3A1165A01	1	1	1	
1	EVAP. CASE	HS-1011	1A0277G02	1	1	1	
2	BASE	-	1A0377G02	1	1	1	
3	FRONT FRAME	S.S	322617-01	1	1	1	
4	SQUARE WASHER	BRASS	433537-02	1	1	1	
5	SCREW - GROUNDING	BRASS	433304-02	1	1	1	
6	JUNCTION BOX COVER	G.S	433410-01	1	1	1	
7	CAPILLARY RING	EP RUBBER	425307-01	1	1	1	
8	BULB HOLDER	ABS	328919-01	1	1	1	
9	SPACER	PE	443545-01	1	1	1	
10	THUMBSCREW	ABS, S.S	415949G01	1	1	1	
11	BASE COVER	S.S	322618G01	1	1	1	
12	TOP INSULATION	PP, PUR	215730G01	1	1	1	
13	FRONT INSULATION	PP, PUR	215731G02	1	1	1	
14	SIDE PANEL (R)	S.S	211811G02	1	1	1	
15	BULB HOLDER (C)	ABS	3A0218G01	1	1	1	
16	FRONT PANEL	S.S	212629G03	1	1	1	
17	STRAP	NBR, NW372	435487-01	1	1	1	
18	CONTROL BOX COVER	G.S	3A0174-01	1	1	1	
19	BUSHING	SR-34-2	420472-05	1	1	1	
20	GASKET	(324859A02)	427014-04	2	2	2	
21	TOP PANEL	S.S	213543-01	1	1	1	
22	INSULATION	PE FOAM	438012-01	1	1	1	
23	SIDE PANEL (R) BASE	S.S	2A0317-01	1	1	1	
24	BARRIER - INSULATION	G.S	4A1167-01	1	1	1	
25	GASKET (A)	—	324859-03	1	1	1	
26	GASKET	L=762	4A0808L02			1	



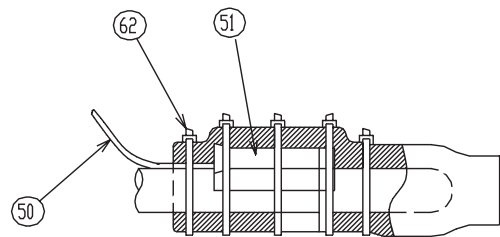


MODEL: KM-900MRF		TITLE: A. ICE CUBER ASSEMBLY					
INDEX NO.	DESCRIPTION	MATERIAL OR MODEL NUMBER	PART NUMBER	REQ'D NUMBER			
				J-0	K-0	L-0	
B	REFRIGERATION CIRCUIT	-	1A0348A01	1	1	1	
C	WATER CIRCUIT	HS-1206	1A0283A03	1	1	1	
D	CONTROL BOX ASSEMBLY	-	2A1377A01	1	1	1	
E	LABEL LOCATION	-	3A1166A01	1	1	1	
1	EVAP. CASE	HS-1011	1A0277G02	1	1	1	
2	BASE	-	1A0377G03	1	1	1	
3	FRONT FRAME	S.S	322617-01	1	1	1	
4	SQUARE WASHER	BRASS	433537-02	2	2	2	
5	SCREW - GROUNDING	BRASS	433304-02	2	2	2	
6	JUNCTION BOX COVER	G.S	433410-01	2	2	2	
7	CAPILLARY RING	EP RUBBER	425307-01	1	1	1	
8	BULB HOLDER	ABS	328919-01	1	1	1	
9	SPACER	PE	443545-01	1	1	1	
10	THUMBSCREW	ABS, S.S	415949G01	1	1	1	
11	BASE COVER	S.S	322618G01	1	1	1	
12	TOP INSULATION	PP, PUR	215730G01	1	1	1	
13	FRONT INSULATION	PP, PUR	215731G02	1	1	1	
14	SIDE PANEL (R)	S.S	211811G02	1	1	1	
15	BULB HOLDER (C)	ABS	3A0218G01	1	1	1	
16	FRONT PANEL	S.S	212629G03	1	1	1	
17	BUSHING	SR-34-2	420472-05	1	1	1	
18	STRAP	NBR, NW372	435487-01	1	1	1	
19	BUSHING	SR-30-1	420472-03	1	1	1	
20	CONTROL BOX COVER	G.S	3A0174-01	1	1	1	
21	GASKET	(324859A02)	427014-04	2	2	2	
22	TOP PANEL	S.S	213543-01	1	1	1	
23	INSULATION	PE FOAM	438012-01	1	1	1	
24	SIDE PANEL (R) BASE	S.S	2A0317-01	1	1	1	
25	BARRIER - INSULATION	G.S	4A1167-01	1	1	1	
26	GASKET (A)	—	324859-03	1	1	1	
27	GASKET	L=762	4A0808L02			1	

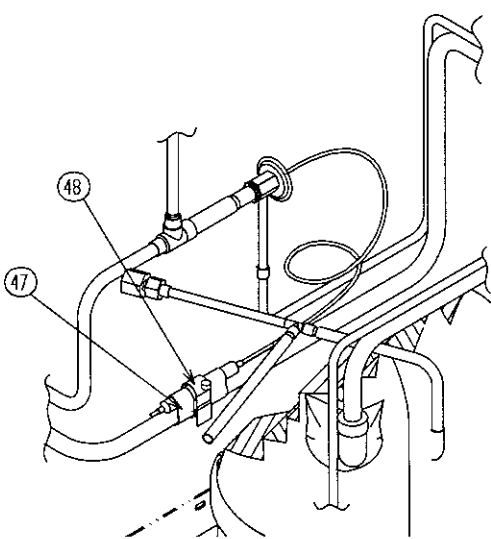
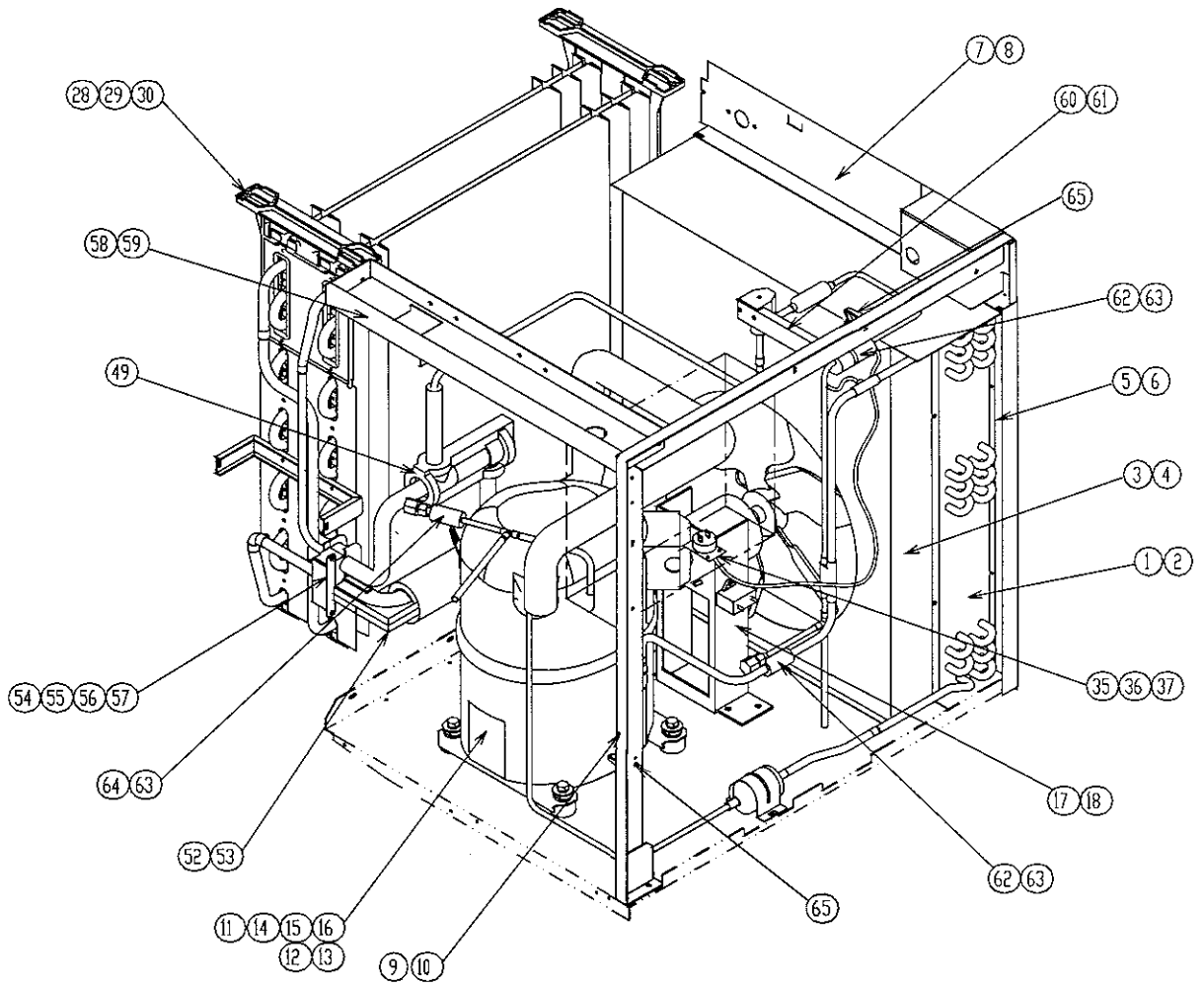
MODEL: KM-900MRF3		TITLE: A. ICE CUBER ASSEMBLY					
INDEX NO.	DESCRIPTION	MATERIAL OR MODEL NUMBER	PART NUMBER	REQ'D NUMBER			
				K-0	L-0		
B	REFRIGERATION CIRCUIT	-	1A0348A02	1	1		
C	WATER CIRCUIT	HS-1206	1A0283A03	1	1		
D	CONTROL BOX ASSEMBLY	-	2A1378A01	1	1		
E	LABEL LOCATION	-	3A1167A01	1	1		
G	TRANSFORMER - BOX ASSEMBLY	HS-0126	3A1102A01	1	1		
1	EVAP. CASE	HS-1011	1A0277G02	1	1		
2	BASE	-	1A0377G04	1	1		
3	FRONT FRAME	S.S	322617-01	1	1		
4	SQUARE WASHER	BRASS	433537-02	2	2		
5	SCREW - GROUNDING	BRASS	433304-02	2	2		
6	JUNCTION BOX COVER	G.S	433410-01	2	2		
7	CAPILLARY RING	EP RUBBER	425307-01	1	1		
8	BULB HOLDER	ABS	328919-01	1	1		
9	SPACER	PE	443545-01	1	1		
10	THUMBSCREW	ABS, S.S	415949G01	1	1		
11	BASE COVER	S.S	322618G01	1	1		
12	TOP INSULATION	PP, PUR	215730G01	1	1		
13	FRONT INSULATION	PP, PUR	215731G02	1	1		
14	SIDE PANEL (R)	S.S	211811G02	1	1		
15	BULB HOLDER (C)	ABS	3A0218G01	1	1		
16	FRONT PANEL	S.S	212629G03	1	1		
17	BUSHING	SR-34-2	420472-05	1	1		
18	STRAP	NBR, NW372	435487-01	1	1		
19	BUSHING	SR-30-1	420472-03	1	1		
20	CONTROL BOX COVER	G.S	3A0174-01	1	1		
21	GASKET	(324859A02)	427014-04	1	1		
22	TOP PANEL	S.S	213543-01	1	1		
23	INSULATION	PE FOAM	438012-01	1	1		
24	SIDE PANEL (R) BASE	S.S	2A0317-01	1	1		
25	BARRIER - INSULATION	G.S	4A1167-01	1	1		
26	GASKET (A)	—	324859-03	1	1		
27	GASKET	L=762	4A0808L02		1		



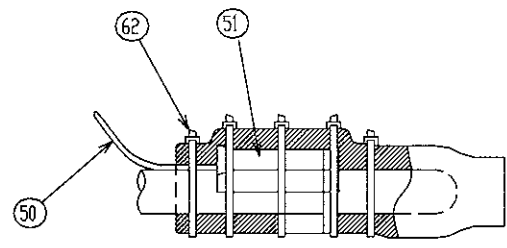
DETAILED EXPANSION VALVE



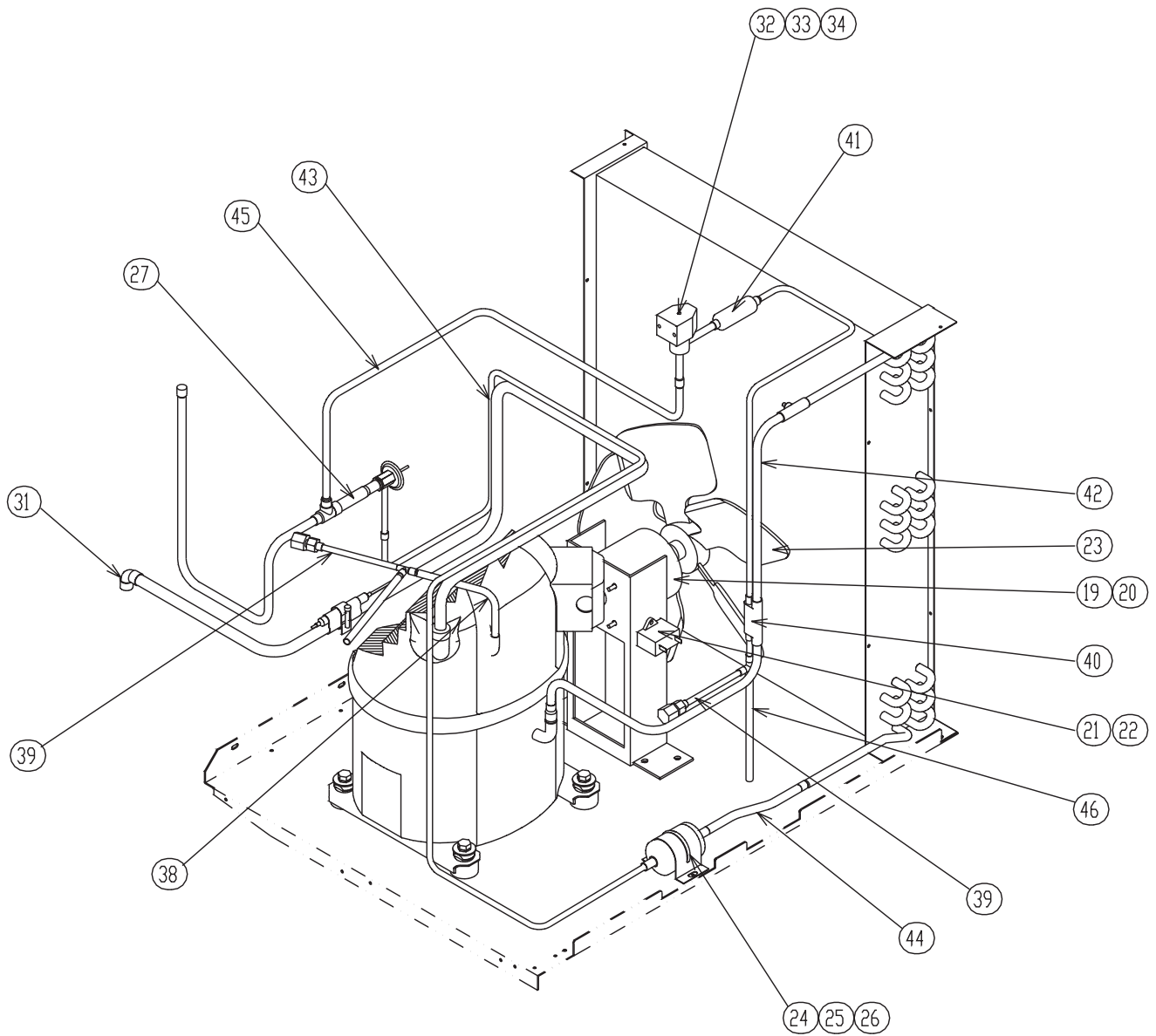
DETAILED THEMISTOR ATTACHMENT



DETAILED EXPANSION VALVE

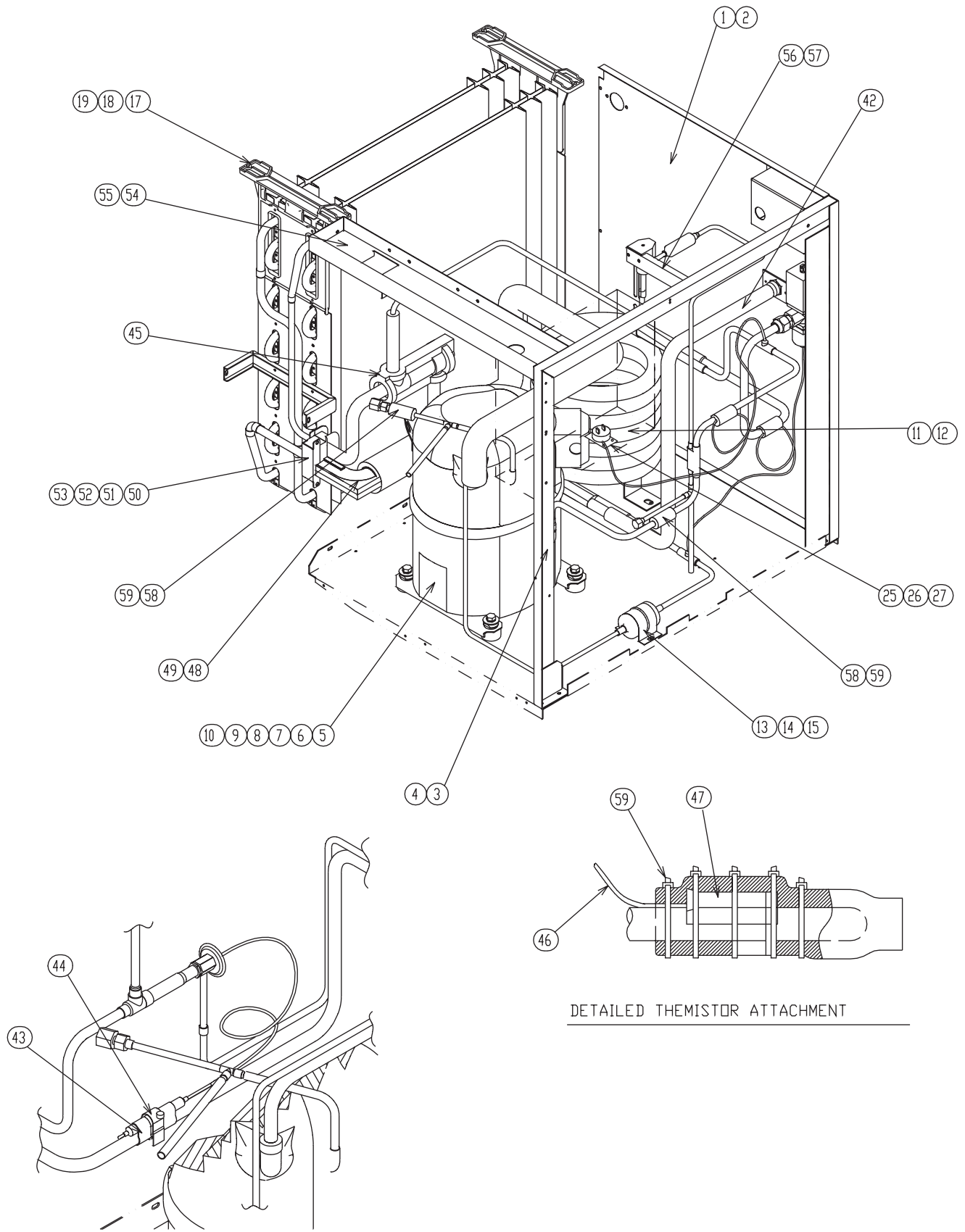


DETAILED THEMISTOR ATTACHMENT



MODEL: KM-900MAF		TITLE: B. REFRIGERATION CIRCUIT					
INDEX NO.	DESCRIPTION	MATERIAL OR MODEL NUMBER	PART NUMBER	REQ'D NUMBER			
				J-0	K-0	L-0	
1	CONDENSER	-	212591-01	1	1	1	
2	T2 SCREW	4x8 S.S	7P32-0408	3	3	3	
3	SHROUD	-	212622-01	1	1	1	
4	T2 SCREW	4x8 S.S	7P32-0408	4	4	4	
5	BARRIER	-	434937-01	1	1	1	
6	T2 SCREW	4x8 S.S	7P32-0408	4	4	4	
7	REAR PANEL	G.S	322626G07	1	1	1	
8	T2 SCREW	4x8 S.S	7P32-0408	4	4	4	
9	SIDE COVER	G.S	2A1379G01	1	1	1	
10	T2 SCREW	4x8 S.S	7P32-0408	4	4	4	
11	COMPRESSOR	CS14K6E-PFV-237	4A1412-01	1	1	1	
12	TERMINAL COVER	005-0776-00	4A1412F01	1	1	1	
13	PROTECTOR	071-0508-35	4A1412F04	1	1	1	
14	GROMMET	027-0167-00	434922-01	4	4	4	
15	SPACER	028-0188-02	434921-01	4	4	4	
16	BOLT	8x45	437889-01	4	4	4	
17	FAN MOTOR BRACKET	-	327180-01	1	1	1	
18	HEX HEAD BOLT W / WASHER	5x12	7B0130512	4	4	4	
19	FAN MOTOR	U90 B1 7190 1031	440911-01	1	1	1	
20	SELF LOCKING NUT	8-32	7N2110832	4	4	4	
21	CAPACITOR	250 VAC 5 MFD	443192-02	1	1	1	
22	T2 SCREW	4x10	7P31-0410	1	1	1	
23	FAN BLADE	20569-17	4A0197-01	1	1	1	
24	DRIER	CW-0325-S	4A1413-01	1	1	1	
25	DRIER BRACKET	G.S	4A0807-01	1	1	1	
26	T2 SCREW	4x8	7P31-0408	2	2	2	
27	EXP. VALVE	HFE-15NHD-2	4A1482-01	1	1	1	
28	EVAPORATOR	-	106396G01	1	1	1	
29	T2 SCREW	4x16 S.S	7P32-0416	4	4	4	
30	T2 SCREW	4x12 S.S	7P32-0412	4	4	4	
31	ELBOW	-	417395-03	1	1	1	
32	VALVE BODY	70	440352-01	1	1	1	
33	COIL-VALVE	ABS-25-1-HD-2	440353-01	1	1	1	
34	BOLT	-	440353F01	1	1	1	
35	PRESSURE SWITCH	ACB-1UB09	433441-07	1	1	1	
36	PRESSURE SWITCH BRACKET	G.S	434938-01	1	1	1	
37	T2 SCREW	4x8 S.S	7P32-0408	1	1	1	
38	COPPER TUBE - ACCESS VALVE	COPPER	4A1772G01	1	1	1	

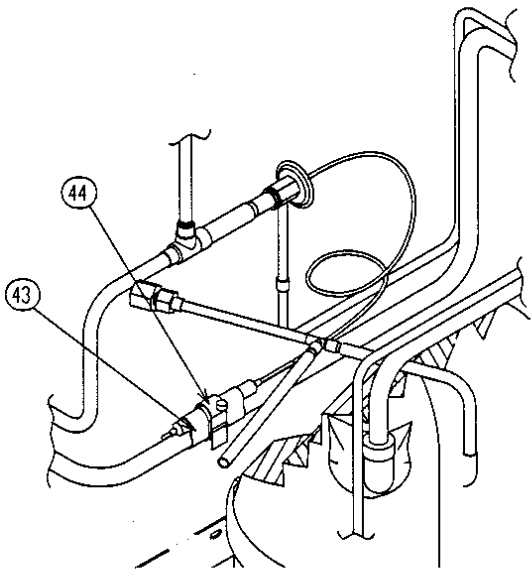
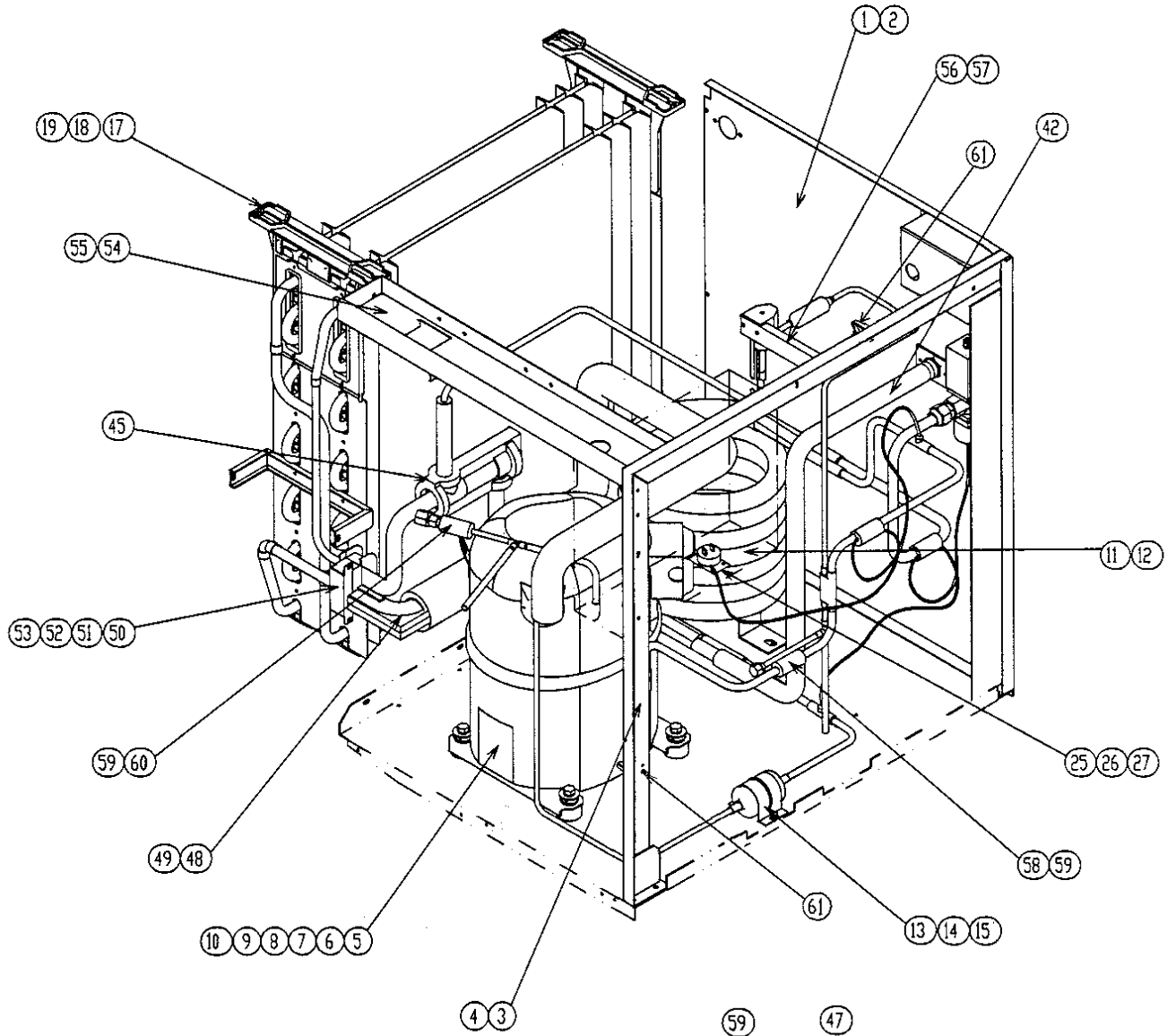
MODEL: KM-900MAF		TITLE: B. REFRIGERATION CIRCUIT					
INDEX NO.	DESCRIPTION	MATERIAL OR MODEL NUMBER	PART NUMBER	REQ'D NUMBER			
				J-0	K-0	L-0	
39	ACCESS VALVE	-	446715-01	2	x2		
		-	457729-01		o2	2	
40	COPPER TUBE (A) HIGH SIDE	COPPER	2A1348G01	1	1	1	
41	STRAINER	-	441569-02	1	1	1	
42	COPPER TUBE (B) HIGH SIDE	COPPER	4A1765G01	1	1	1	
43	HEAT EXCHANGER	-	1A0372G01	1	1	1	
44	COPPER TUBE (D) HIGH SIDE	COPPER	4A1763-01	1	1	1	
45	COPPER TUBE LOW SIDE	COPPER	2A1380G01	1	1	1	
46	COPPER TUBE (J) HIGH SIDE	COPPER	4A2764G01	1	1	1	
47	HOLDER - EXP. VALVE	3/8"	3A0107-01	1	1	1	
48	CLAMP	S.S	443461-02	1	1	1	
49	EXP. VALVE COVER	PE FOAM	3A0944-01	1	1	1	
50	THERMISTOR	-	429006-03	1	1	1	
51	HOLDER - THERMISTOR	COPPER	427430-01	1	1	1	
52	INSULATION - THERMISTOR (A)	PE FOAM	439368-01	1	1	1	
53	INSULATION - THERMISTOR (B)	PE FOAM	439368-02	1	1	1	
54	RUBBER INSULATION (A)	-	3A1044-01	1	1	1	
55	RUBBER INSULATION (B)	-	3A1045-01	1	1	1	
56	INSULATION HOLDER	-	3A1550-01	1	1	1	
57	T2 SCREW	4x8 S.S	7P32-0408	2	2	2	
58	TOP FRAME	G.S	325938-01	1	1	1	
59	T2 SCREW	4x8 S.S	7P32-0408	4	4	4	
60	VALVE BRACKET	-	440507-01	1	x1		
	HOT GAS VALVE BRACKET	-	434916-01		o1	1	
61	T2 SCREW	4x8	7P31-0408	2	2	2	
62	INSULATION TUBE	L=40	7762-1020	3	2	2	
63	CABLE TIE	CV-200	7920-0010	7	7	7	
64	CLAMP	-	4A2338-01		2	2	
65	INSULATION TUBE	L=40	7762-1030		1	1	



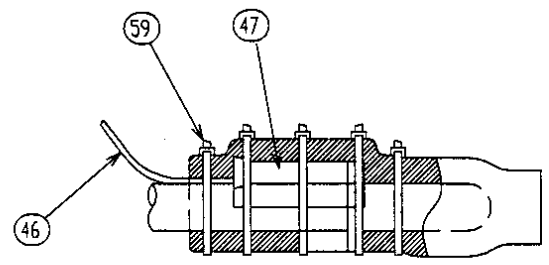
DETAILED EXPANSION VALVE

DETAILED THEMISTOR ATTACHMENT

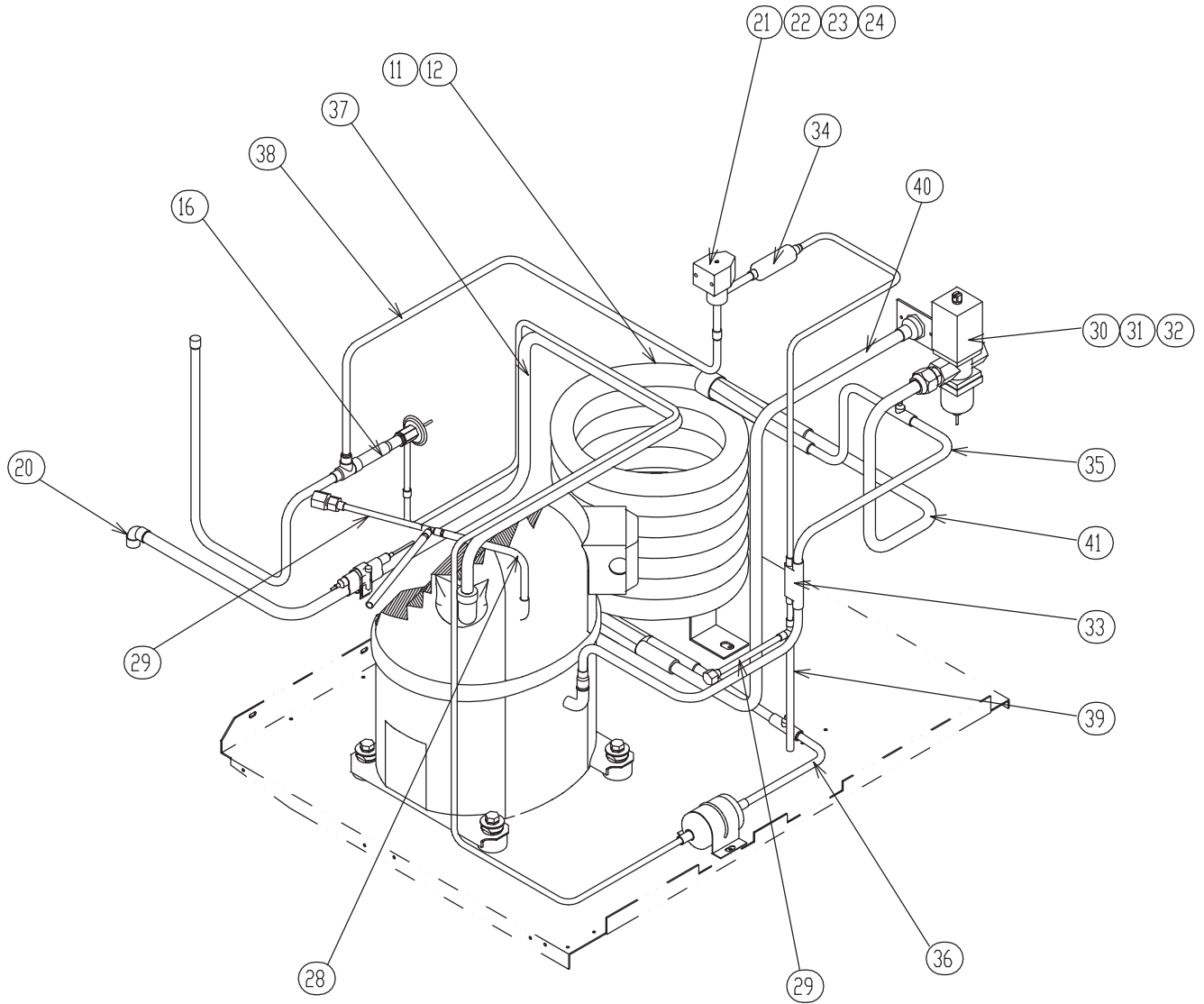




DETAILED EXPANSION VALVE



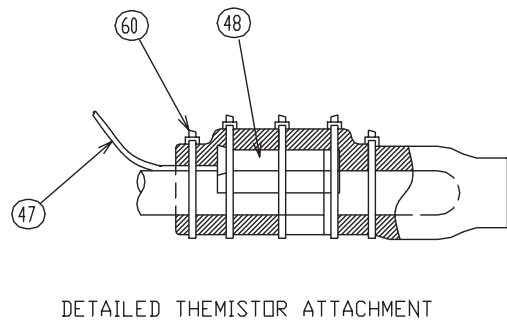
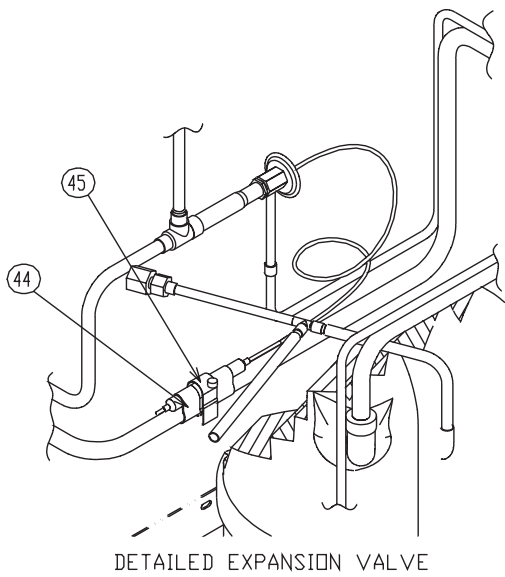
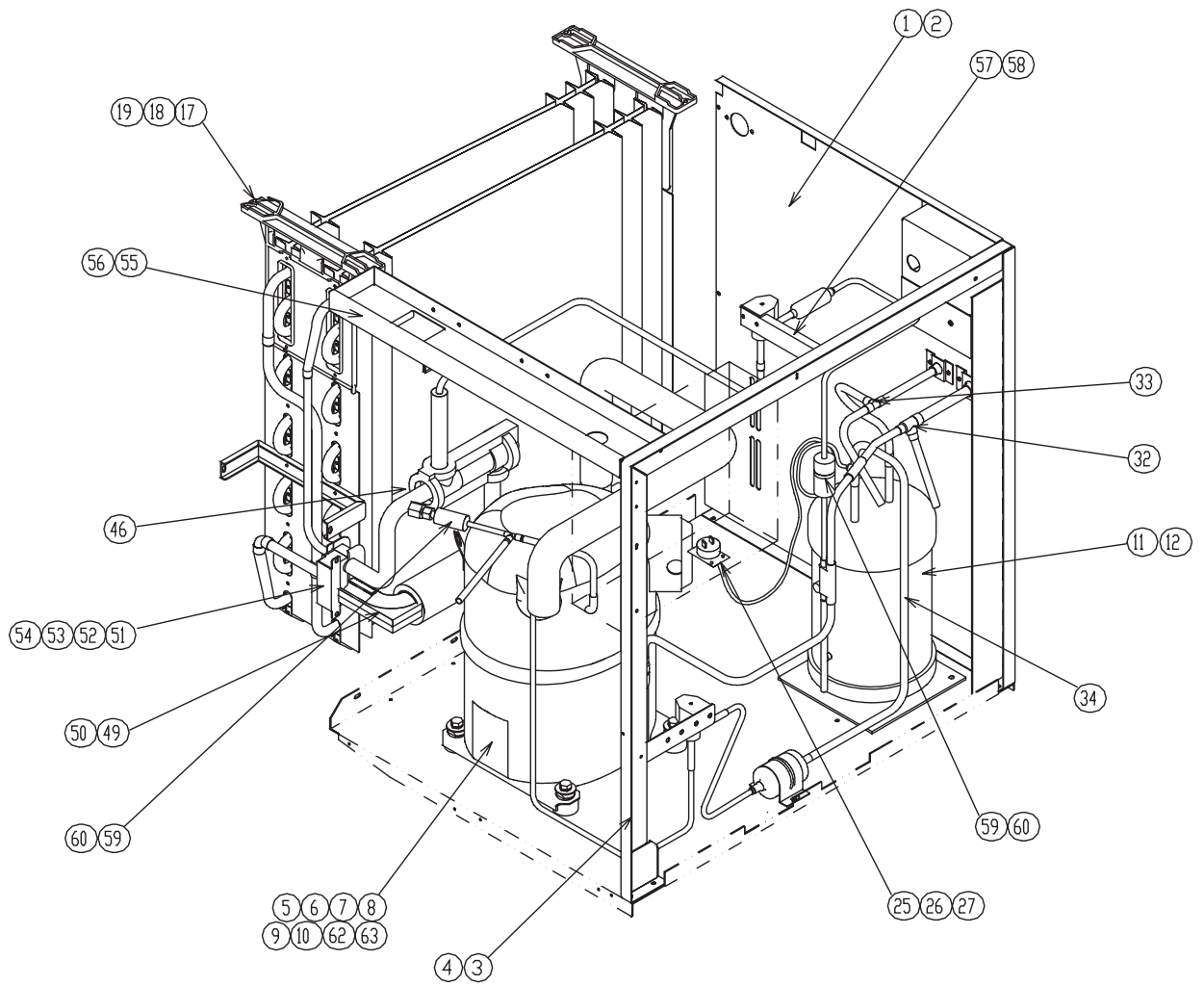
DETAILED THEMISTOR ATTACHMENT

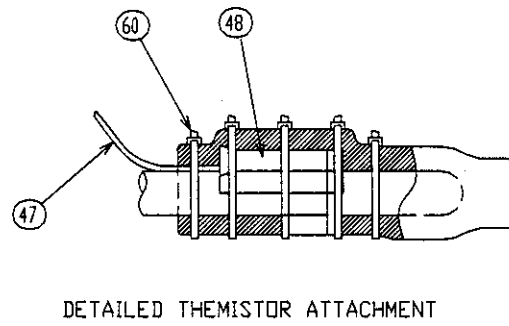
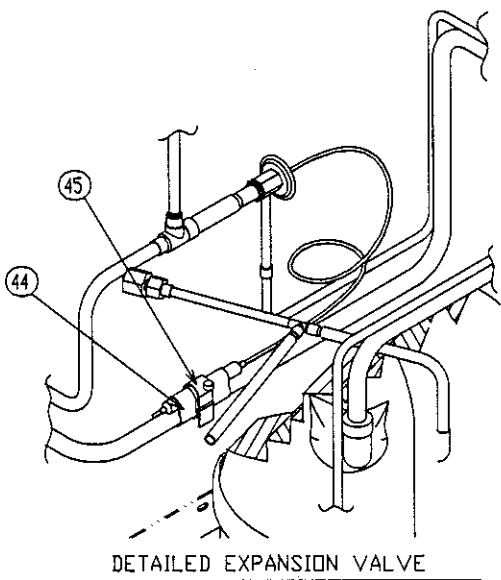
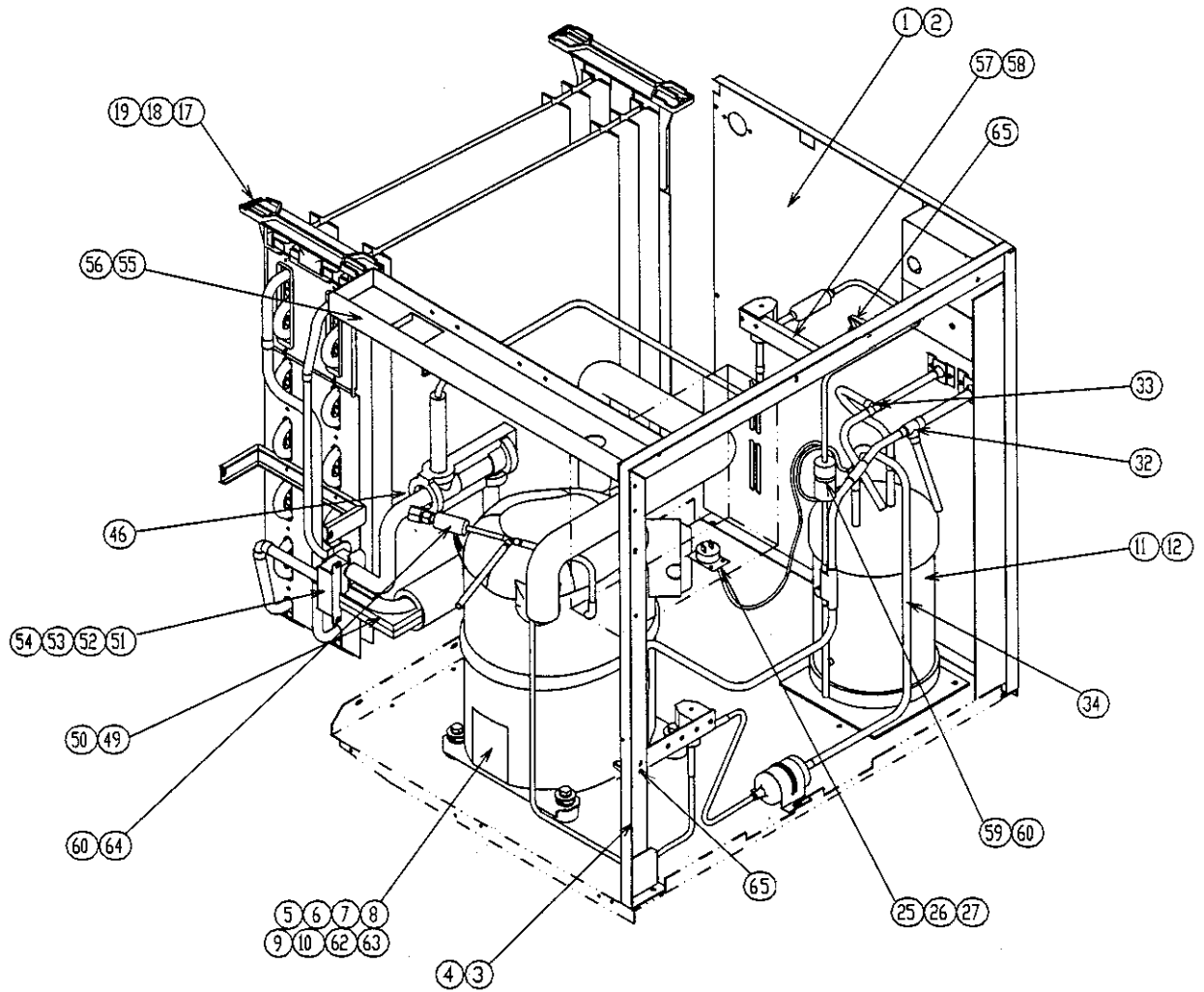


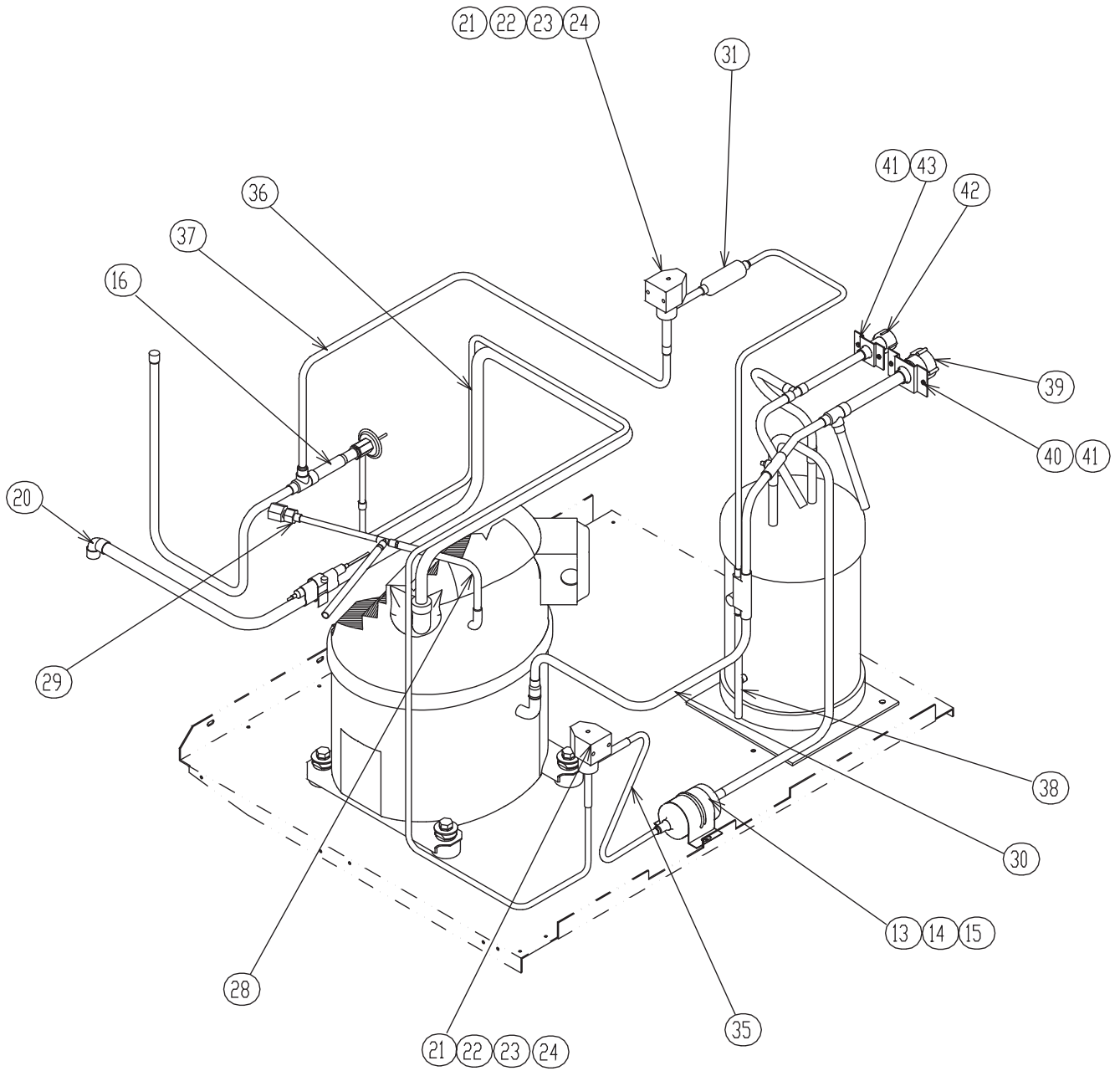
HA MODEL: KM-900MWF TITLE: B. REFRIGERATION CIRCUIT							
INDEX NO.	DESCRIPTION	MATERIAL OR MODEL NUMBER	PART NUMBER	REQ'D NUMBER			
				J-0	K-0	L-0	
1	REAR PANEL	G.S	2A1360G01	1	1	1	
2	T2 SCREW	4x8 S.S	7P32-0408	4	4	4	
3	SIDE FRAME	G.S	2A1379G01	1	1	1	
4	T2 SCREW	4x8 S.S	7P32-0408	4	4	4	
5	COMPRESSOR	CS14K6E-PFV-237	4A1412-01	1	1	1	
6	TERMINAL COVER	-	4A1412F01	1	1	1	
7	PROTECTOR	-	4A1412F04	1	1	1	
8	GROMMET	-	434922-01	4	4	4	
9	SPACER	-	434921-01	4	4	4	
10	BOLT	8x45	437889-01	4	4	4	
11	CONDENSER - WATER COOLED	-	4A1536-01	1	1	1	
12	HEX HEAD BOLT W / WASHER	5x12	7B0130512	3	3	3	
13	DRIER	CW-0325-S	4A1413-01	1	1	1	
14	DRIER BRACKET	-	4A0807-01	2	2	2	
15	T2 SCREW	4x8 S.S	7P32-0408	1	1	1	
16	EXP. VALVE	-	4A1482-01	1	1	1	
17	EVAPORATOR	-	106396G01	1	1	1	
18	T2 SCREW	4x16 S.S	7P32-0416	4	4	4	
19	T2 SCREW	4x12 S.S	7P32-0412	2	2	2	
20	ELBOW	COPPER	417395-03	1	1	1	
21	VALVE BODY	70	440352-01	1	1	1	
22	COIL-VALVE	ABS-25-1-HD-2	440353-01	1	1	1	
23	BOLT	-	440353F01	1	1	1	
24	TRUSS HEAD SCREW	4x8	7C31-0408	2	2	2	
25	PRESSURE SWITCH	ACB-2UB04	433441-05	1	1	1	
26	PRESSURE SWITCH BRACKET	G.S	434938-01	1	1	1	
27	T2 SCREW	4x8	7P31-0408	1	1	1	
28	COPPER TUBE - ACCESS VALVE	COPPER	4A1772G01	1	1	1	
29	ACCESS VALVE	-	446715-01	2	x2		
		-	457729-01		o2	2	
30	WATER REGULATOR	V46DA	4A0911-03	1	1	1	
31	TRUSS HEAD SCREW	4x6	7C31-0406	2	2	2	
32	MALE CONNECTOR	-	4A1087-01	1	1	1	
33	COPPER TUBE (A) HIGH SIDE	COPPER	2A1348G01	1	1	1	
34	STRAINER	-	441569-02	1	1	1	
35	COPPER TUBE (B) HIGH SIDE	COPPER	3A1194G01	1	1	1	
36	COPPER TUBE (C) HIGH SIDE	COPPER	3A1195G01	1	1	1	
37	HEAT EXCHANGER	-	1A0372G01	1	1	1	
38	COPPER TUBE LOW SIDE	COPPER	2A1380G01	1	1	1	
39	COPPER TUBE (J) HIGH SIDE	COPPER	4A1764G01	1	1	1	

HA

MODEL: KM-900MWF		TITLE: B. REFRIGERATION CIRCUIT					
INDEX NO.	DESCRIPTION	MATERIAL OR MODEL NUMBER	PART NUMBER	REQ'D NUMBER			
				J-0	K-0	L-0	
40	COPPER TUBE (A)	COPPER	3A1196G01	1	1	1	
41	COPPER TUBE (B)	COPPER	3A1197G01	1	1	1	
42	INSULATION TUBE	L=720	7762-1626	1	1	1	
43	HOLDER -EXP	3/8"	3A0107-01	1	1	1	
44	CLAMP	-	443461-02	1	1	1	
45	EXP. VALVE COVER	-	3A0944-01	1	1	1	
46	THERMISTOR	-	429006-03	1	1	1	
47	HOLDER - THERMISTOR	-	427430-01	1	1	1	
48	INSULATION - THERMISTOR (A)	-	439368-01	1	1	1	
49	INSULATION - THERMISTOR (B)	-	439368-02	1	1	1	
50	RUBBER INSULATION (A)	-	3A1044-01	1	1	1	
51	RUBBER INSULATION (B)	-	3A1045-01	1	1	1	
52	INSULATION HOLDER	-	4A1550-01	1	1	1	
53	T2 SCREW	4x8 S.S	7P32-0408	2	2	2	
54	TOP FRAME	-	325938-01	1	1	1	
55	T2 SCREW	4x8	7P31-0408	4	4	4	
56	VALVE BRACKET	-	440507-01	1	x1		
	HOT GAS VALVE BRACKET	-	434916-01		o1	1	
57	T2 SCREW	4x8	7P31-0408	2	2	2	
58	INSULATION TUBE	L=40	7762-1020	3	2	2	
59	CABLE TIE	CV-200	7920-0010	7	7	7	
60	INSULATION TUBE	L=40	7762-1030		1	1	
61	CLAMP	-	4A2338-01		2	2	







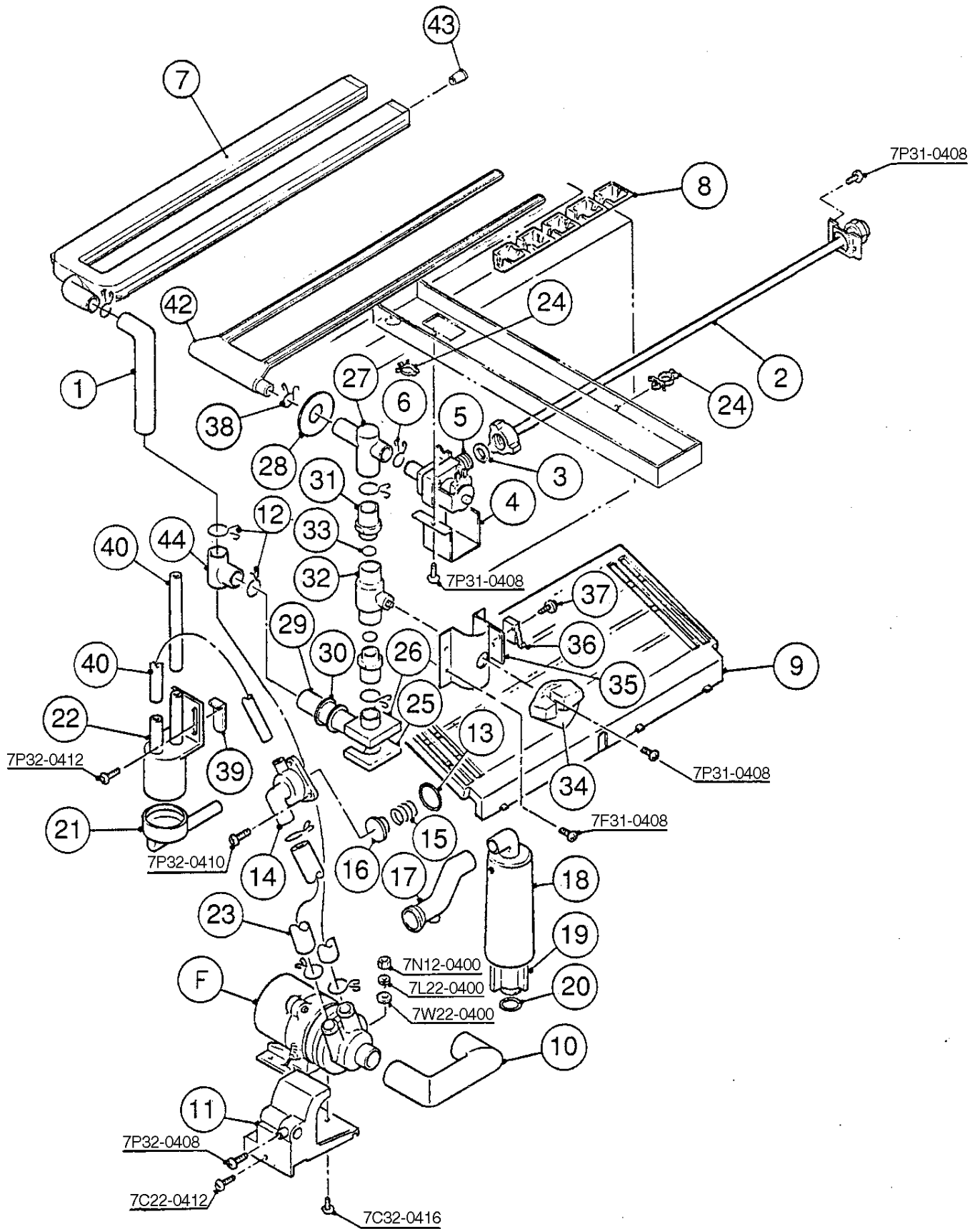
MODEL: KM-900MRF		TITLE: B. REFRIGERATION CIRCUIT					
INDEX NO.	DESCRIPTION	MATERIAL OR MODEL NUMBER	PART NUMBER	REQ'D NUMBER			
				J-0	K-0	L-0	
1	REAR PANEL	G.S	212626G08	1	1	1	
2	T2 SCREW	4x8	7P31-0408	6	6	6	
3	SIDE FRAME	-	2A1379G02	1	1	1	
4	T2 SCREW	4x8	7P31-0408	4	4	4	
5	COMPRESSOR	CS14K6E-PFV-279	4A1412-02	1	1	1	
6	TERMINAL COVER	-	4A1412F01	1	1	1	
7	PROTECTOR	-	4A1412F04	1	1	1	
8	GROMMET	-	434922-01	4	4	4	
9	SPACER	-	434921-01	4	4	4	
10	BOLT	-	437889-01	4	4	4	
11	RECEIVER	RR-MNWP750	437652-01	1	1	1	
12	HEX HEAD BOLT W / WASHER	5x10	7B0130510	3	3	3	
13	DRIER	CW-0325-S	4A1413-01	1	1	1	
14	DRIER BRACKET	-	4A0807-01	1	1	1	
15	T2 SCREW	4x8	7P31-0408	2	2	2	
16	EXP. VALVE	HFE-15 NHD-2	4A1482-01	1	1	1	
17	EVAPORATOR	-	106396G01	1	1	1	
18	T2 SCREW	4x16 SS	7P32-0416	4	4	4	
19	T2 SCREW	4x12 SS	7P32-0412	2	2	2	
20	ELBOW	-	417395-03	1	1	1	
21	VALVE BODY	-	440352-01	2	2	2	
22	COIL-VALVE	ABS-25-1-HD-2	440353-01	2	2	2	
23	BOLT	-	440353F01	2	2	2	
24	TRUSS HEAD SCREW	4x8	7C31-0408	4	4	4	
25	PRESSURE SWITCH	ACB-1UB09	433441-07	1	1	1	
26	PRESSURE SWITCH BRACKET	-	434938-01	1	1	1	
27	T2 SCREW	4x8	7P31-0408	1	1	1	
28	COPPER TUBE - ACCESS VALVE	-	4A1772G01	1	1	1	
29	ACCESS VALVE	-	446715-01	1	x1		
		-	457729-01		o1	1	
30	COPPER TUBE (A) HIGH SIDE	COPPER	2A1348G01	1	1	1	
31	STRAINER	-	441569-02	1	1	1	
32	COPPER TUBE (B) HIGH SIDE	COPPER	3A1192G01	1	1	1	
33	COPPER TUBE (C) HIGH SIDE	COPPER	3A1191G01	1	1	1	
34	COPPER TUBE (D) HIGH SIDE	COPPER	4A1771-01	1	1	1	
35	COPPER TUBE (E) HIGH SIDE	COPPER	4A1769-01	1	1	1	
36	HEAT EXCHANGER	-	1A0373G01	1	1	1	
37	COPPER TUBE - LOW SIDE	COPPER	2A1380G01	1	1	1	
38	EVACUATION TUBE	-	4A2553-01	1	1	1	
39	COUPLING	-	434136G02	1	1	1	



MODEL: KM-900MRF		TITLE: B. REFRIGERATION CIRCUIT					
INDEX NO.	DESCRIPTION	MATERIAL OR MODEL NUMBER	PART NUMBER	REQ'D NUMBER			
				J-0	K-0	L-0	
40	TUBE HOLDER-L	-	438245-01	1	1	1	
41	T2 SCREW	4x8	7P31-0408	4	4	4	
42	COUPLING	-	433751G01	1	1	1	
43	TUBE HOLDER-S	-	438246-01	1	1	1	
44	HOLDER-EXP. VALVE	3/8"	3A0107-01	1	1	1	
45	CLAMP	-	443461-02	1	1	1	
46	EXP. VALVE COVER	-	3A0944-01	1	1	1	
47	THERMISTOR	-	429006-03	1	1	1	
48	HOLDER-THERMISTOR	-	427430-01	1	1	1	
49	INSULATION-THERMISTOR (A)	-	439368-01	1	1	1	
50	INSULATION-THERMISTOR (B)	-	439368-02	1	1	1	
51	RUBBER INSULATION (A)	-	3A1044-01	1	1	1	
52	RUBBER INSULATION (B)	-	3A1045-01	1	1	1	
53	INSULATION HOLDER	-	4A1550-01	1	1	1	
54	T2 SCREW	4x8 SS	7P32-0408	2	2	2	
55	TOP FRAME	-	325938-01	1	1	1	
56	T2 SCREW	4x8	7P31-0408	4	4	4	
57	VALVE BRACKET	-	440507-01	1	x1		
	HOT GAS VALVE BRACKET	-	434916-01		o1	1	
58	T2 SCREW	4x8	7P31-0408	2	2	2	
59	INSULATION TUBE	L=40	7762-1020	2	1	1	
60	CABLE TIE	CV-200	7920-0010	7	7	7	
61	—						
62	—						
63	—						
64	INSULATION TUBE	L=40	7762-1030	1	1	1	
65	CLAMP	-	4A2338-01	2	2	2	

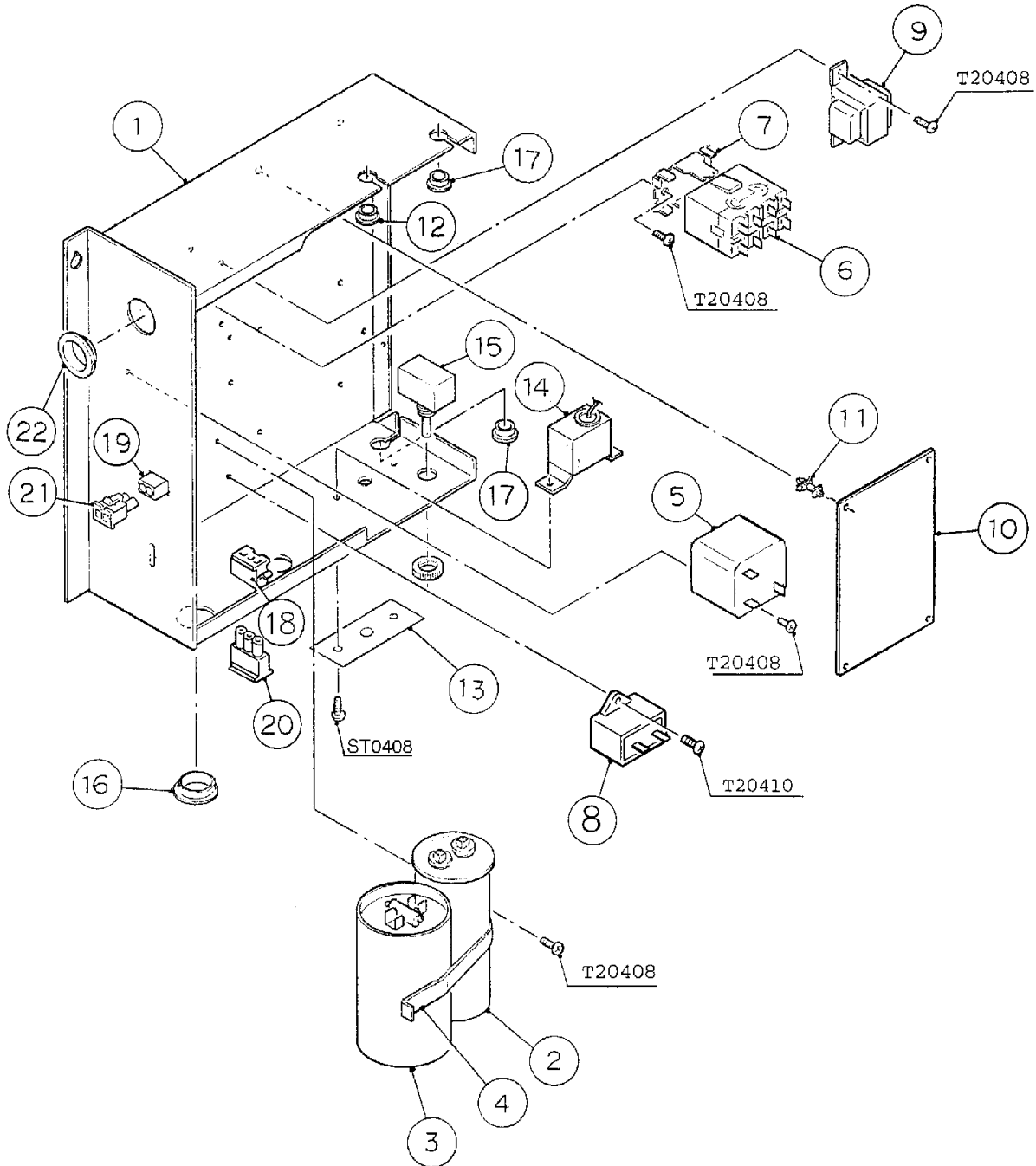
MODEL: KM-900MRF3		TITLE: B. REFRIGERATION CIRCUIT					
INDEX NO.	DESCRIPTION	MATERIAL OR MODEL NUMBER	PART NUMBER	REQ'D NUMBER			
				K-0	L-0		
1	REAR PANEL	G.S	212626G08	1	1		
2	T2 SCREW	4x8	7P31-0408	6	6		
3	SIDE FRAME	-	2A1379G02	1	1		
4	T2 SCREW	4x8	7P31-0408	4	4		
5	-	-	-	-	-		
6	-	-	-	-	-		
7	PROTECTOR	-	4A1412F04	1	1		
8	GROMMET	-	434922-01	4	4		
9	SPACER	-	434921-01	4	4		
10	BOLT	-	437889-01	4	4		
11	RECEIVER	-	437652-01	1	1		
12	HEX HEAD BOLT W / WASHER	5x10	7B0130510	3	3		
13	DRIER	CW-0325-S	4A1413-01	1	1		
14	DRIER BRACKET	-	4A0807-01	1	1		
15	T2 SCREW	4x8	7P31-0408	2	2		
16	EXP. VALVE	HFE-15 NHD-2	4A1482-01	1	1		
17	EVAPORATOR	-	106396G01	1	1		
18	T2 SCREW	4x16 SS	7P32-0416	4	4		
19	T2 SCREW	4x14 SS	7P32-0414	2	2		
20	ELBOW	-	417395-03	1	1		
21	VALVE BODY	-	440352-01	2	2		
22	COIL-VALVE	-	440353-01	2	2		
23	BOLT	-	440353F01	2	2		
24	TRUSS HEAD SCREW	4x8	7C31-0408	4	4		
25	PRESSURE SWITCH	ACB-1UB09	433441-07	1	1		
26	PRESSURE SWITCH BRACKET	-	434938-01	1	1		
27	T2 SCREW	4x8	7P31-0408	1	1		
28	COPPER TUBE - ACCESS VALVE	-	4A1772G01	1	1		
29	ACCESS VALVE	-	446715-01	x1			
		-	457729-01	o1	1		
30	COPPER TUBE (A) HIGH SIDE	COPPER	2A1348G01	1	1		
31	STRAINER	-	441569-02	1	1		
32	COPPER TUBE (B) HIGH SIDE	COPPER	3A1192G01	1	1		
33	COPPER TUBE (C) HIGH SIDE	COPPER	3A1191G01	1	1		
34	COPPER TUBE (D) HIGH SIDE	COPPER	4A1771-01	1	1		
35	COPPER TUBE (E) HIGH SIDE	COPPER	4A1769-01	1	1		
36	HEAT EXCHANGER	-	1A0373G01	1	1		
37	COPPER TUBE - LOW SIDE	COPPER	2A1380G01	1	1		
38	EVACUATION TUBE	-	4A2553-01	1	1		
39	COUPLING	-	434136G02	1	1		

MODEL: KM-900MRF3		TITLE: B. REFRIGERATION CIRCUIT					
INDEX NO.	DESCRIPTION	MATERIAL OR MODEL NUMBER	PART NUMBER	REQ'D NUMBER			
				K-0	L-0		
40	TUBE HOLDER-L	-	438245-01	1	1		
41	T2 SCREW	4x8	7P31-0408	4	4		
42	COUPLING	-	433751G01	1	1		
43	TUBE HOLDER-S	-	438246-01	1	1		
44	HOLDER-EXP. VALVE	3/8"	3A0107-01	1	1		
45	CLAMP	-	443461-02	1	1		
46	EXP. VALVE COVER	-	3A0944-01	1	1		
47	THERMISTOR	-	429006-03	1	1		
48	HOLDER-THERMISTOR	-	427430-01	1	1		
49	INSULATION-THERMISTOR (A)	-	439368-01	1	1		
50	INSULATION-THERMISTOR (B)	-	439368-02	1	1		
51	RUBBER INSULATION (A)	-	3A1044-01	1	1		
52	RUBBER INSULATION (B)	-	3A1045-01	1	1		
53	INSULATION HOLDER	-	4A1550-01	1	1		
54	T2 SCREW	4x8 SS	7P32-0408	2	2		
55	TOP FRAME	-	325938-01	1	1		
56	T2 SCREW	4x8	7P31-0408	4	4		
57	VALVE BRACKET	-	440507-01	x1			
	HOT GAS VALVE BRACKET	-	434916-01	o1	1		
58	T2 SCREW	4x8	7P31-0408	2	2		
59	INSULATION TUBE	L=40	7762-1020	2	2		
60	CABLE TIE	CV-200	7920-0010	7	7		
61	-	-	-	-			
62	COMPRESSOR	CS14K6E-TF5-279	4A1484-02	1	1		
63	TERMINAL COVER	-	4A1484F01	1	1		
64	INSULATION TUBE	L=40	7762-1030	1	1		
65	CLAMP	—	4A2338-01	2	2		



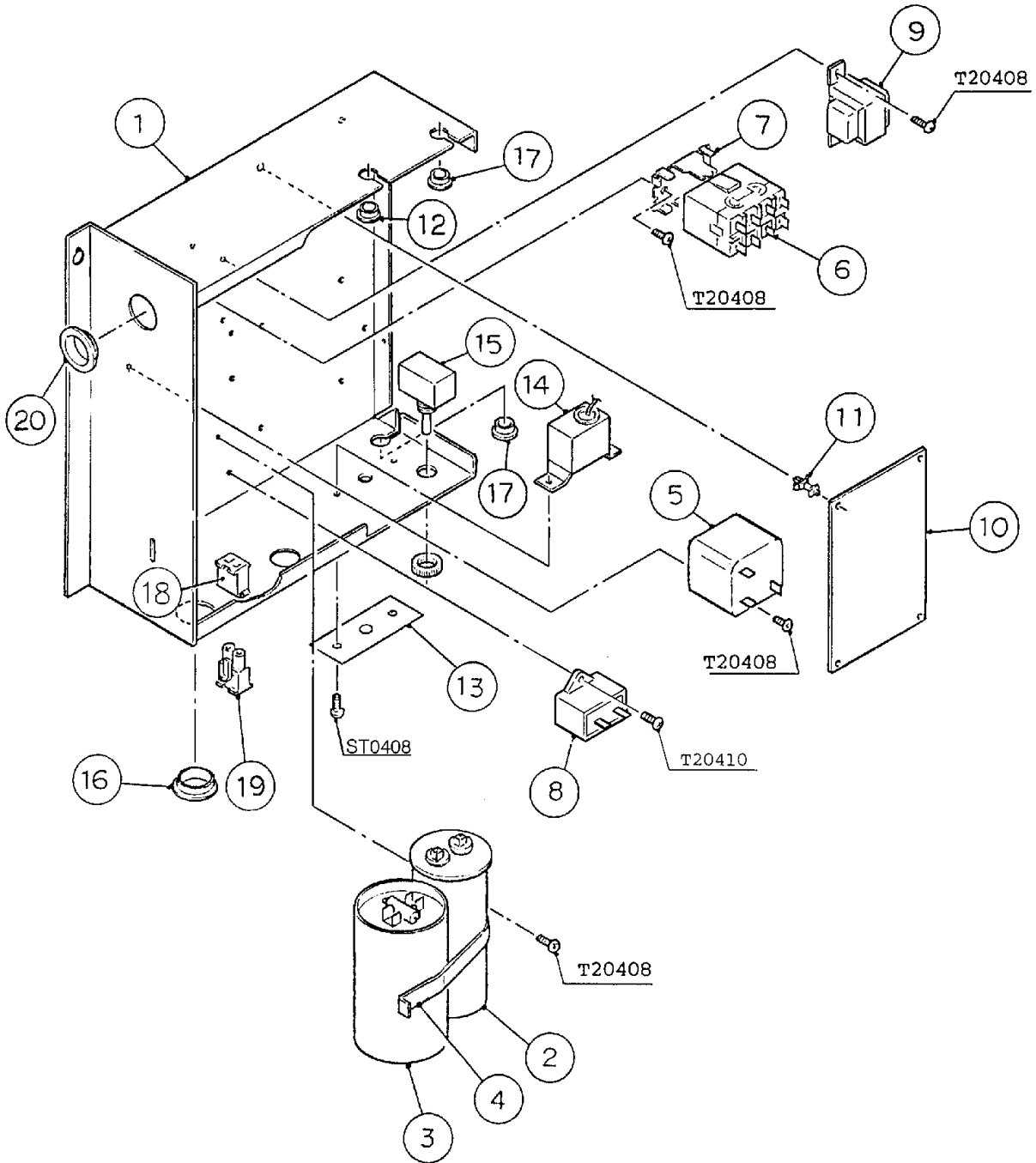
MODEL: KM-900MAF, MWF, MRF, MRF3				TITLE: C. WATER CIRCUIT			
INDEX NO.	DESCRIPTION	MATERIAL OR MODEL NUMBER	PART NUMBER	REQ'D NUMBER			
				J-0	K-0	L-0	
F	PUMP MOTOR ASSEMBLY	(S-0613)	321444A01	1	1	1	
1	RUBBER HOSE (A)	EPDM	4A1551-01	1	1	1	
2	WATER SUPPLY PIPE	COPPER	4A0768G04	1	1	1	
3	RUBBER GASKET	NR	413854-03	1	1	1	
4	WATER VALVE BRACKET	G.S	321443-01	1	1	1	
5	WATER VALVE	J248-032	3U0111-02	1	1	1	
6	HOSE CLAMP	S.S, 18MM	427443-05	1	1	1	
7	SPRAY TUBE	-	1A0260-02	1	1	1	
8	SPRAY GUIDE (A)	PE	208586-01	6	6	6	
9	CUBE GUIDE	ABS	212088-01	1	1	1	
10	SUCTION HOSE	EPDM	433466-01	1	1	1	
11	PUMP MOTOR BRACKET	ABS	211408-01	1	1	1	
12	HOSE CLAMP	S.S, 25MM	427443-03	9	9	9	
13	"O" RING	1AG35	7611-G035	1	1	1	
14	VALVE HOUSING - DRAIN	ABS	321001-01	1	1	1	
15	SPRING	S.S	322110-01	1	1	1	
16	VALVE SHEET	EPDM	433705-01	1	1	1	
17	DRAIN HOSE	SANTOPRENE	433468-01	1	1	1	
18	OVERFLOW CAP	PE	321002-01	1	1	1	
19	OVERFLOW PIPE	ABS	430722-01	1	1	1	
20	"O"RING	EPDM, AS568-218	4A1234-01	1	1	1	
21	CONNECTOR - FLOAT SWITCH	EPDM	426799-01	1	1	1	
22	FLOAT SWITCH	163795	4A0886-01	1	1	1	
23	VINYL HOSE	L=110	7716-2025	1	1	1	
24	CLAMP	NO. 248	427902-04	2	2	2	
25	CORNER INSULATION (A)	PE FOAM	439376-01	1	1	1	
26	CORNER INSULATION (B)	PE FOAM	439392-01	1	1	1	
27	TEE	SANTOPRENE	4A0177-01	1	1	1	
28	FLANGE	EPDM	439267-01	1	1	1	
29	RUBBER HOSE (B)	EPDM	4A1551-02	1	1	1	
30	RUBBER RING	TSE2571-5U	439236-01	1	1	1	
31	MALE ADAPTOR	(442137A01) ABS	325826-01	2	2	2	
32	BALL VALVE	PVC	439293-01	1	1	1	
33	"O" RING	1AP18	7611-P018	2	2	2	
34	HANDLE	JH1352	215383-01	1	1	1	
35	VALVE HOLDER	G.S	325825-01	1	1	1	
36	MICRO SWITCH	V3L-111-D8	4A0365-01	1	1	1	
37	TAPPING SCREW	3x14	431415-02	1	1	1	
38	HOSE CLAMP	S.S 20MM	427443-06	1	1	1	

MODEL: <b>KM-900MAF, MWF, MRF, MRF3</b>			TITLE: <b>C. WATER CIRCUIT</b>				
INDEX NO.	DESCRIPTION	MATERIAL OR MODEL NUMBER	PART NUMBER	REQ'D NUMBER			
				J-0	K-0	L-0	
39	FLOAT SWITCH STOP	S.S	4A0137-01	1	1	1	
40	VINYL HOSE	L=140	7716-0913	2	2	2	
41	VINYL HOSE	L=250	7716-2025	1	1	1	
42	WATER SUPPLY TUBE	PE	2A0079-01	1	1	1	
43	PLUG	EPDM/SY. R	4A0176-01	2	2	2	
44	DISTRIBUTOR	ABS	432426-01	1	1	1	

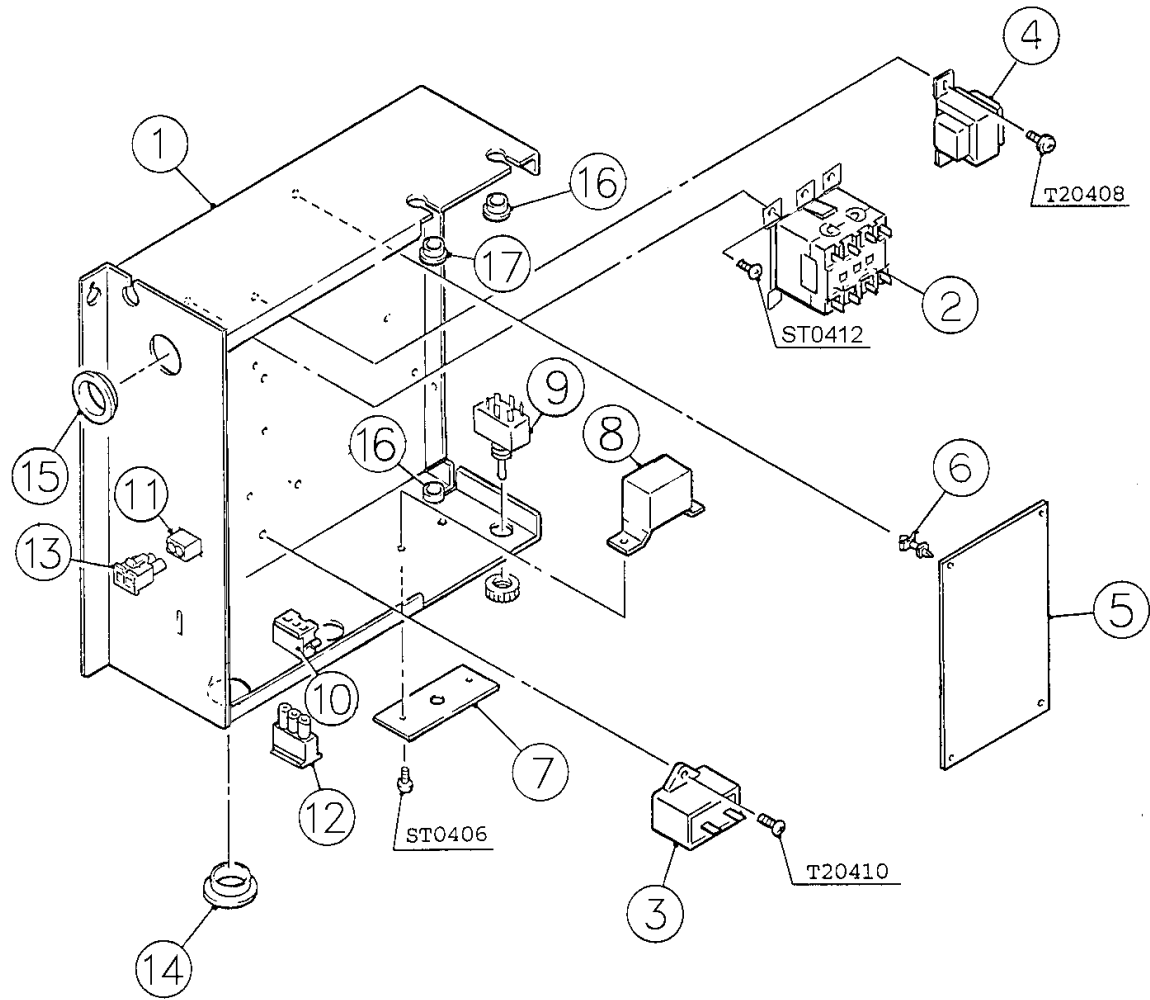


MODEL: KM-900MAF, MRF		TITLE: D. CONTROL BOX ASSEMBLY					
INDEX NO.	DESCRIPTION	MATERIAL OR MODEL NUMBER	PART NUMBER	REQ'D NUMBER			
				J-0	K-0	L-0	
1	CONTROL BOX	G.S	2A1082G01	1	1	1	
2	CAPACITOR	RS37B0035UNHG03	439943-01	1	1	1	
3	CAPACITOR - STARTING	3535B8A0145A250A5	3A0076-01	1	1	1	
4	STRAP	G.S	434580-04	1	1	1	
5	STARTER	040-0001-40	434923-01	1	1	x1	
		-	4A1107-09			o1	
6	MAGNETIC CONTACTOR	VC20	428393-01	1	1	1	
7	BRACKET	-	428393F01	1	1	1	
8	CAPACITOR	5.5MFD 250V	443192-03	1	1	1	
9	TRANSFORMER	26D285H	3A0172-01	1	1	1	
10	CONTROLLER BOARD	HOS-001A	2A1410-01	1	1	1	
11	BOARD SUPPORT	OBLS37-M	4A0336-03	4	4	4	
12	BUSHING	OCB-875	428394-04	1	1	1	
13	CONTROL LABEL	PES FILM	4A1758-01	1	1	1	
14	THERMOSTAT	A30-3842-00	4A0824-02	1	1	1	
15	TOGGLE SWITCH	8966K84	443119-01	1	1	1	
16	BUSHING	SB-1093-15	420470-03	1	1	1	
17	BUSHING	OCB-500	428394-02	2	2	2	
18	3P PLUG HOUSING	3191-03P	412832-06	1	1	1	
19	2P PLUG HOUSING	3191-02P	412832-07	1	1	1	
20	3P RECEPTACLE HOUSING	3191-03R1	412831-06	1	1	1	
21	2P RECEPTACLE HOUSING	3191-02R1	412831-07	1	1	1	
22	BUSHING	SB-1093-13	420470-12	1	1	1	

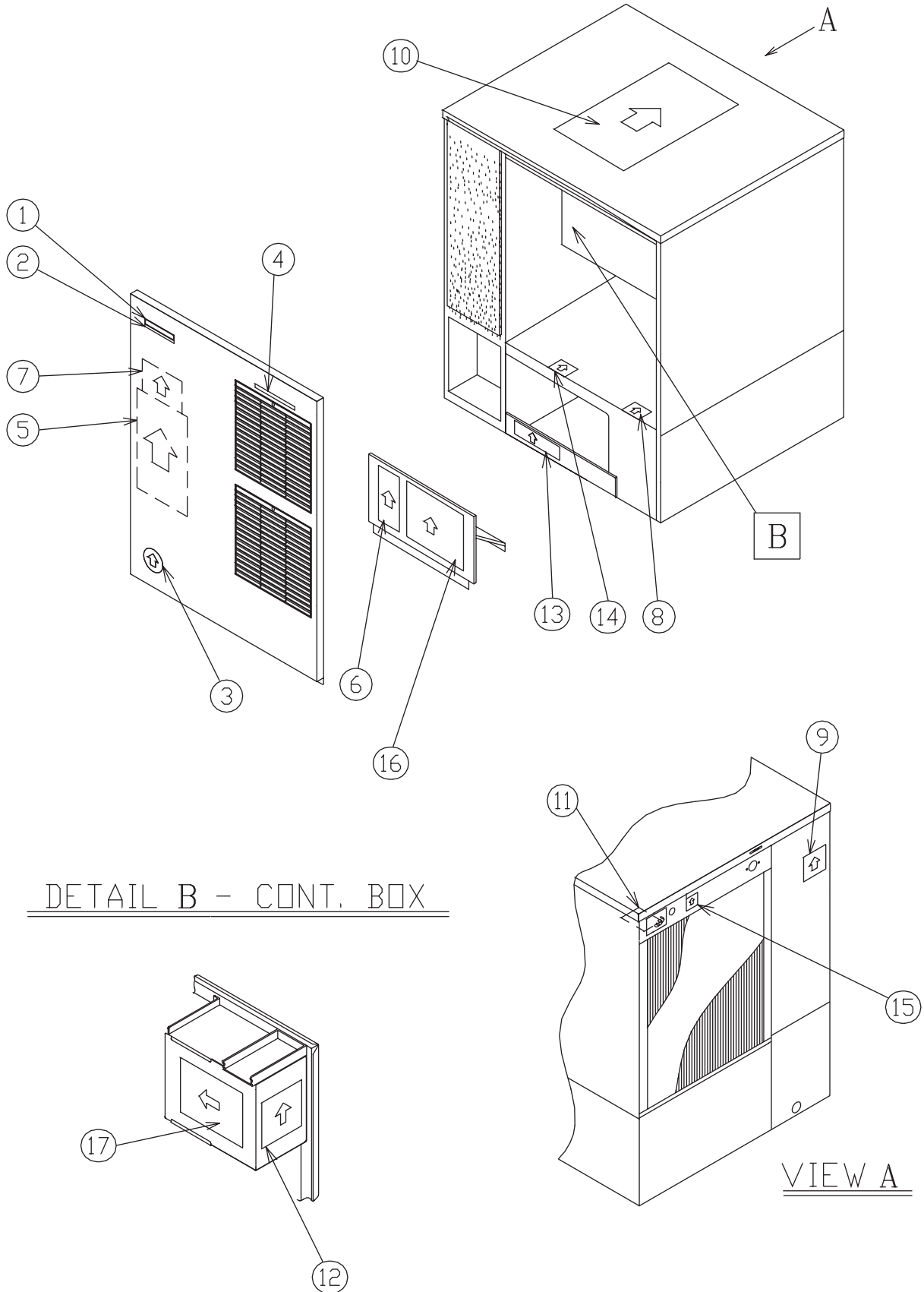




MODEL: KM-900MWF		TITLE: D. CONTROL BOX ASSEMBLY					
INDEX NO.	DESCRIPTION	MATERIAL OR MODEL NUMBER	PART NUMBER	REQ'D NUMBER			
				J-0	K-0	L-0	
1	CONTROL BOX	G.S	2A1082G01	1	1	1	
2	CAPACITOR	RS37B0035UNHG03	439943-01	1	1	1	
3	CAPACITOR - STARTING	3535B8A0145A250A5	3A0076-01	1	1	1	
4	STRAP	G.S	434580-04	1	1	1	
5	STARTER	040-0001-40	434923-01	1	1	x1	
		—	4A1107-09			o1	
6	MAGNETIC CONTACTOR	VC20	428393-01	1	1	1	
7	BRACKET	-	428393F01	1	1	1	
8	CAPACITOR	5.5MFD 250V	443192-03	1	1	1	
9	TRANSFORMER	26D285H	3A0172-01	1	1	1	
10	CONTROLLER BOARD	HOS-001A	2A1410-01	1	1	1	
11	BOARD SUPPORT	CBLS37-M	4A0336-03	4	4	4	
12	BUSHING	OCB-875	428394-04	1	1	1	
13	CONTROL LABEL	PES FILM	4A1758-01	1	1	1	
14	THERMOSTAT	A30-3842-00	4A0824-02	1	1	1	
15	TOGGLE SWITCH	8966K84	443119-01	1	1	1	
16	BUSHING	SB-1093-15	420470-03	1	1	1	
17	BUSHING	OCB-500	428394-02	2	2	2	
18	2P PLUG HOUSING	3191-03P	412832-06	1	1	1	
19	2P RECEPTACLE HOUSING	3191-03R1	412831-06	1	1	1	
20	BUSHING	SB-1093-13	420470-12	1	1	1	



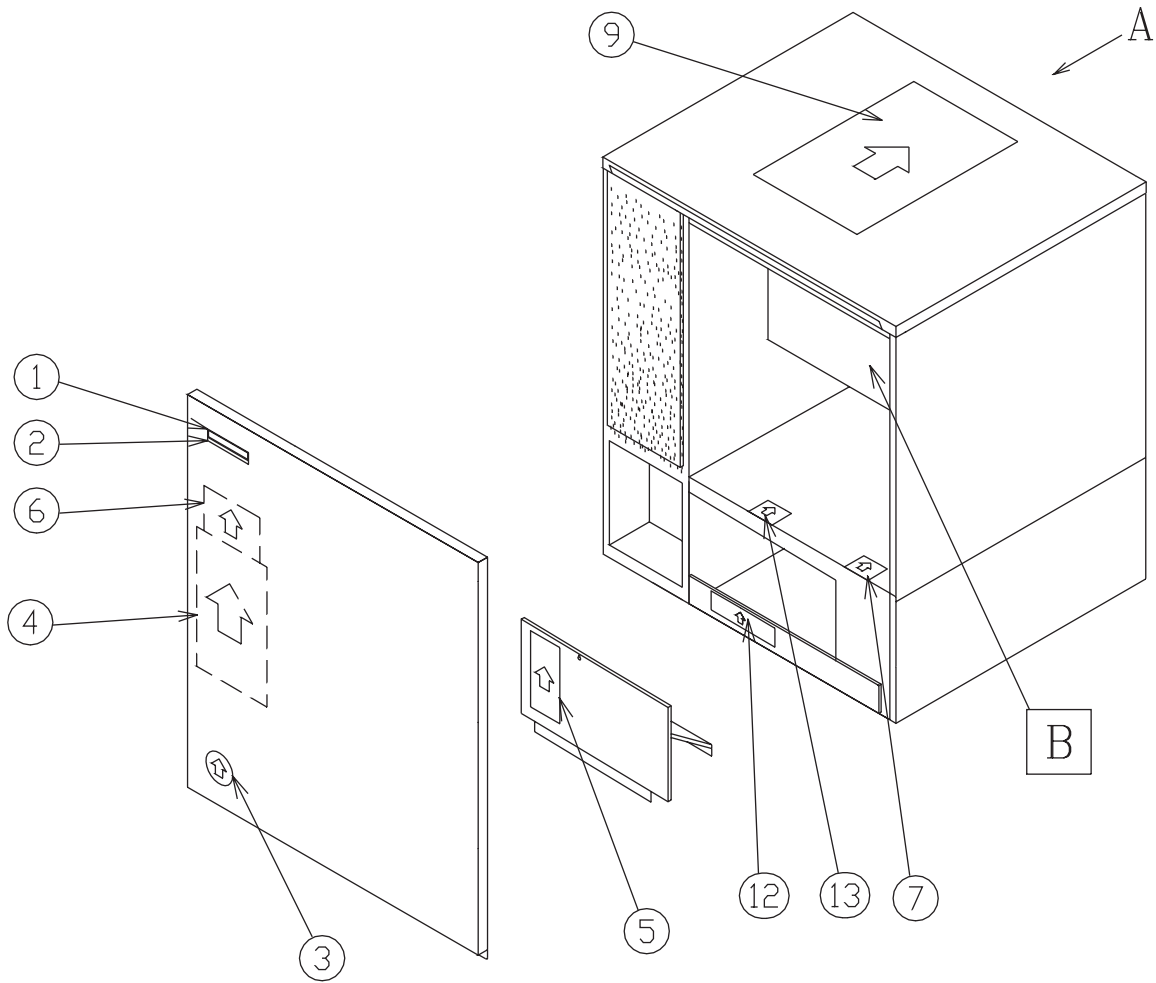
MODEL: KM-900MRF3		TITLE: D. CONTROL BOX ASSEMBLY					
INDEX NO.	DESCRIPTION	MATERIAL OR MODEL NUMBER	PART NUMBER	REQ'D NUMBER			
				K-0	L-0		
1	CONTROL BOX	G.S	2A1082G02	1	1		
2	MAGNETIC CONTACTOR	A77-30904A-226	4A0794-01	1	1		
3	CAPACITOR	250V 5.5 MFD	443192-03	1	1		
4	TRANSFORMER	26D285H	3A0172-01	1	1		
5	CONTROLLER BOARD	HOS-001A	2A1410-01	1	1		
6	BOARD SUPPORT	CBS37-M	4A0336-03	4	4		
7	CONTROL LABEL	PES FILM	4A1758-01	1	1		
8	THERMOSTAT	A30-3842-00	4A0824-02	1	1		
9	TOGGLE SWITCH	8966K84	443119-01	1	1		
10	3P PLUG HOUSING	3191-03P	412832-06	1	1		
11	2P PLUG HOUSING	3191-02P	412832-07	1	1		
12	3P RECEPTACLE HOUSING	3191-03R1	412831-06	1	1		
13	2P RECEPTACLE HOUSING	3191-02R1	412831-07	1	1		
14	BUSHING	SB-1093-15	420470-03	1	1		
15	BUSHING	SB-1093-13	420470-12	1	1		
16	BUSHING	OCB-500	428394-02	2	2		
17	BUSHING	OCB-875	428394-04	1	1		



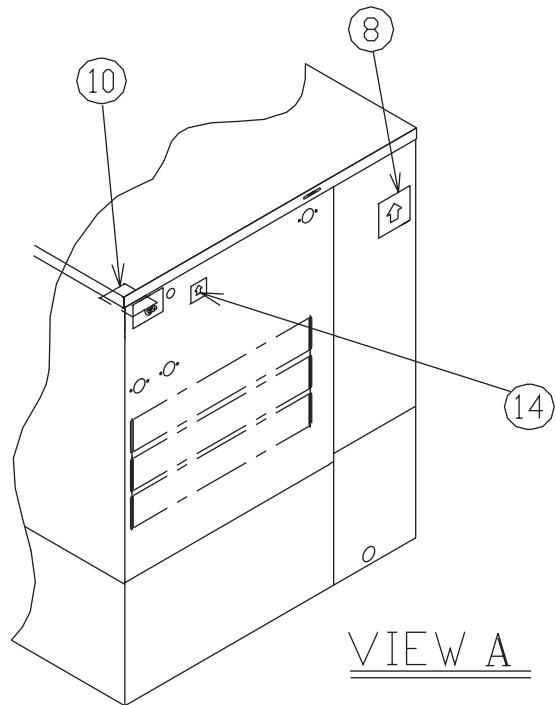
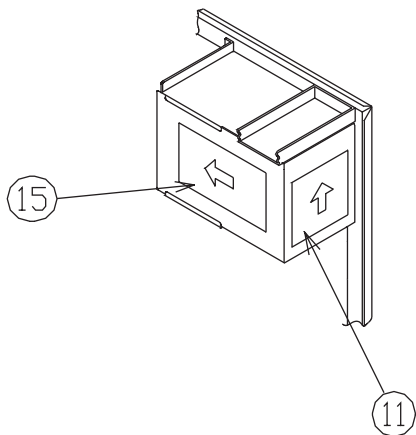
DETAIL B - CONT. BOX

VIEW A

MODEL: KM-900MAF		TITLE: E. LABEL LOCATION					
INDEX NO.	DESCRIPTION	MATERIAL OR MODEL NUMBER	PART NUMBER	REQ'D NUMBER			
				J-0	K-0	L-0	
1	EMBLEM	ABS	4A0560-01	1	1	1	
2	MODEL NUMBER LABEL	PETP FILM	4A1233-20	1	1	1	
3	LABEL - PENGUIN (R)	PETP FILM	4A0526-01	1	1	1	
4	LABEL - AIR FILTER	PETP FILM	426177-01	1	1	1	
5	MAINTENANCE LABEL	PVC FILM	326218-01	1	1	1	
6	CAUTION LABEL (H)	PVC FILM	439148-01	1	1	1	
7	WIRING LABEL	PVC FILM	3A1203-01	1	1	1	
8	RATING LABEL	PVC FILM	4A1742-01	1	1	1	
9	NAMEPLATE	PES FILM	4A1738-01	1	1	1	
10	INSTRUCTION SHEET	PAPER	2A1310-01	1	1	1	
11	TAG - WARNING: ELECTRICAL CONNECTION	PAPER	428430-01	1	1	1	
12	MANUAL LABEL	PVC FILM	324476-01	1	1	1	
13	OPERATION LABEL - VALVE	PVC FILM	439541-01	1	1	1	
14	LABEL - R-404A	PES FILM	4A0960-01	1	1	1	
15	INSTRUCTION LABEL	PVC FILM	444575-01	1	1	1	
16	CAUTION LABEL (F)	PVC FILM	439146-01	1	1	1	
17	LABEL - CONTROL BOARD	PVC FILM	3A1272-01	1	1	1	



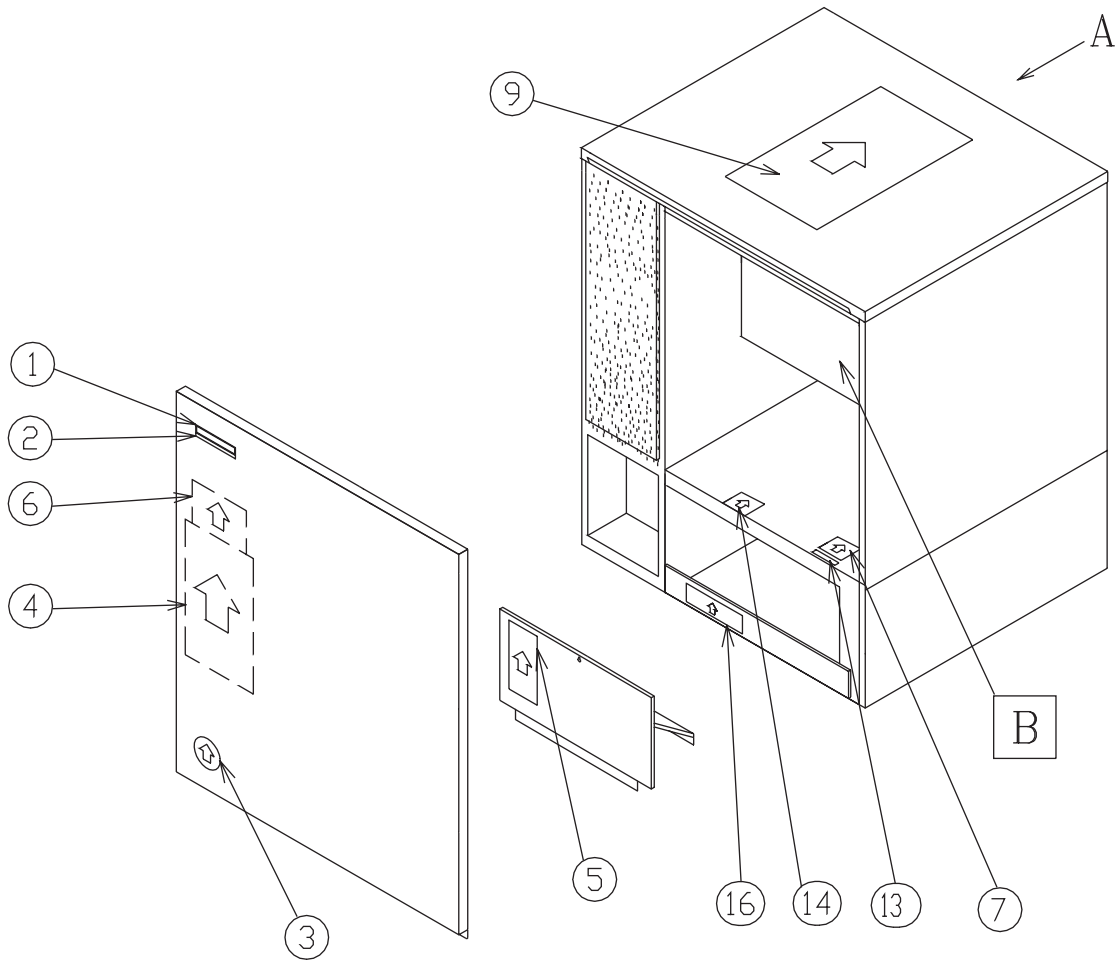
DETAIL B - CONT. BOX



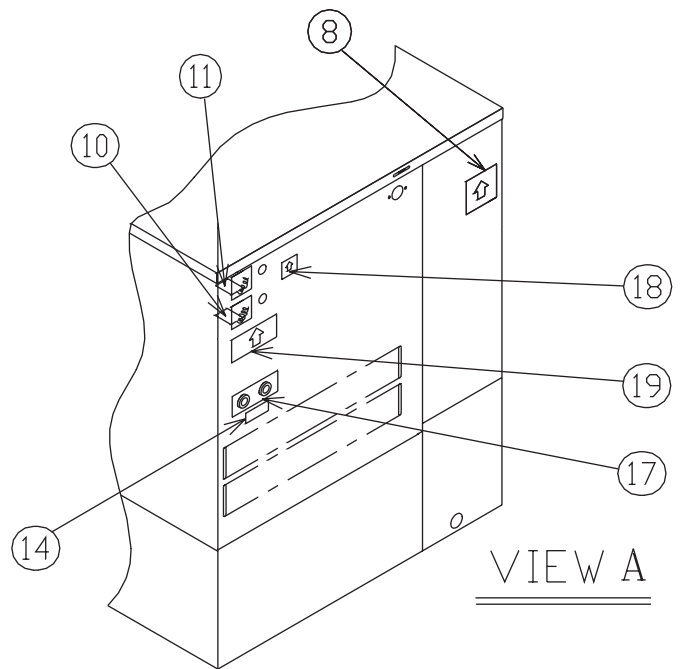
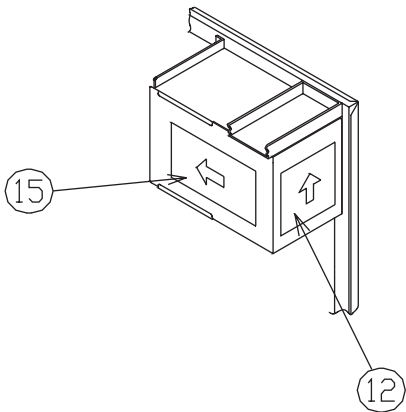
VIEW A

MODEL: KM-900MWF TITLE: E. LABEL LOCATION							
INDEX NO.	DESCRIPTION	MATERIAL OR MODEL NUMBER	PART NUMBER	REQ'D NUMBER			
				J-0	K-0	L-0	
1	EMBLEM	ABS	4A0560-01	1	1	1	
2	MODEL NUMBER LABEL	PETP FILM	4A1233-01	1	1	1	
3	LABEL - PENGUIN (R)	PETP FILM	4A0526-01	1	1	1	
4	MAINTENANCE LABEL	PVC FILM	326218-01	1	1	1	
5	CAUTION LABEL (H)	PVC FILM	439148-01	1	1	1	
6	WIRING LABEL	PVC FILM	3A1203-01	1	1	1	
7	RATING LABEL	PVC FILM	4A1743-01	1	1	1	
8	NAMEPLATE	PES FILM	4A1739-01	1	1	1	
9	INSTRUCTION SHEET	PAPER	2A1310-01	1	1	1	
10	TAG - WARNING: ELECTRICAL CONNECTION	PAPER	428430-01	1	1	1	
11	MANUAL LABEL	PVC FILM	324476-01	1	1	1	
12	OPERATION LABEL - VALVE	PVC FILM	439541-01	1	1	1	
13	LABEL - R-404A	PES FILM	4A0960-01	1	1	1	
14	INSTRUCTION LABEL	PVC FILM	444575-01	1	1	1	
15	LABEL - CONTROL BOARD	PVC FILM	3A1272-01	1	1	1	



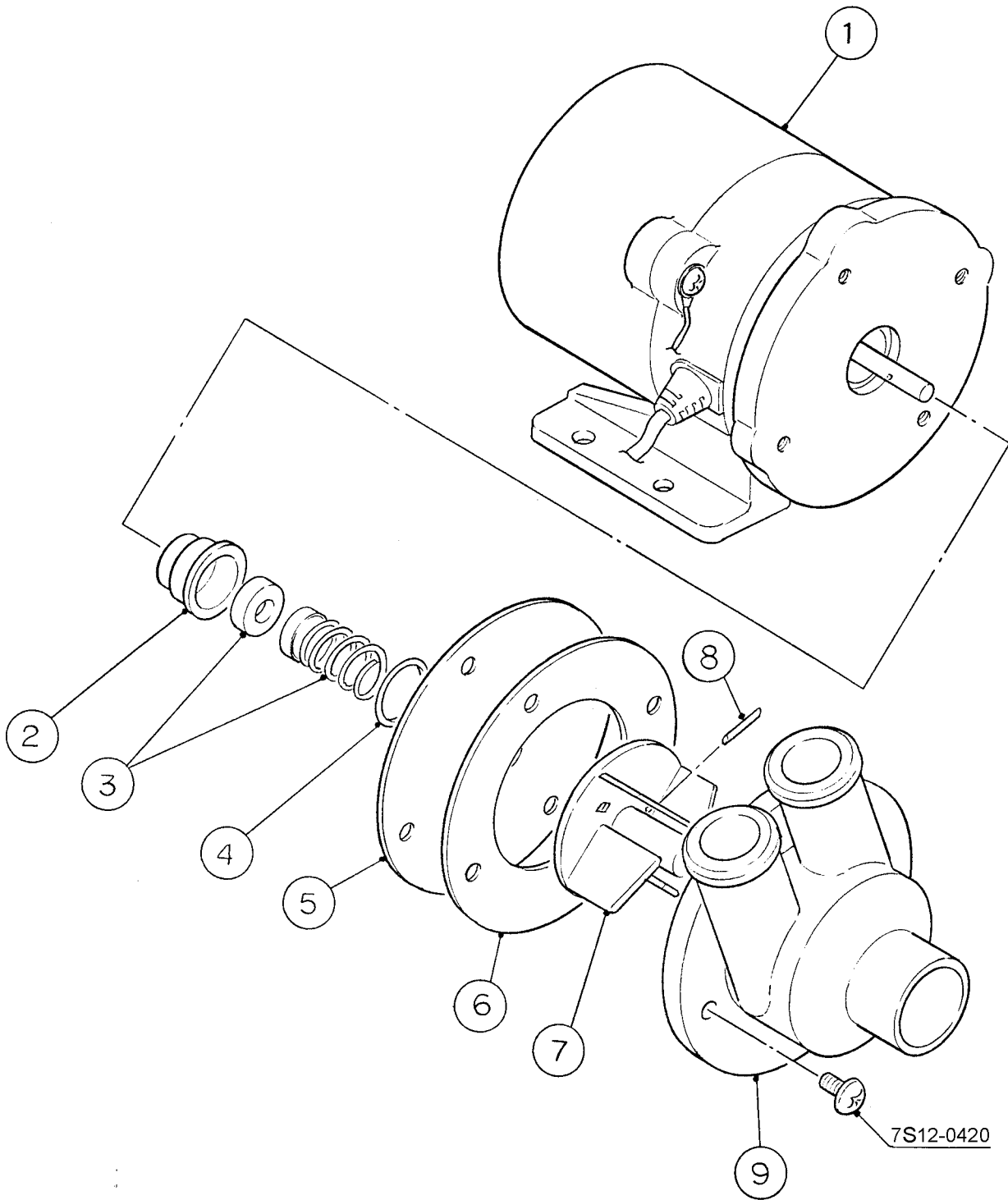


DETAIL B - CONT. BOX

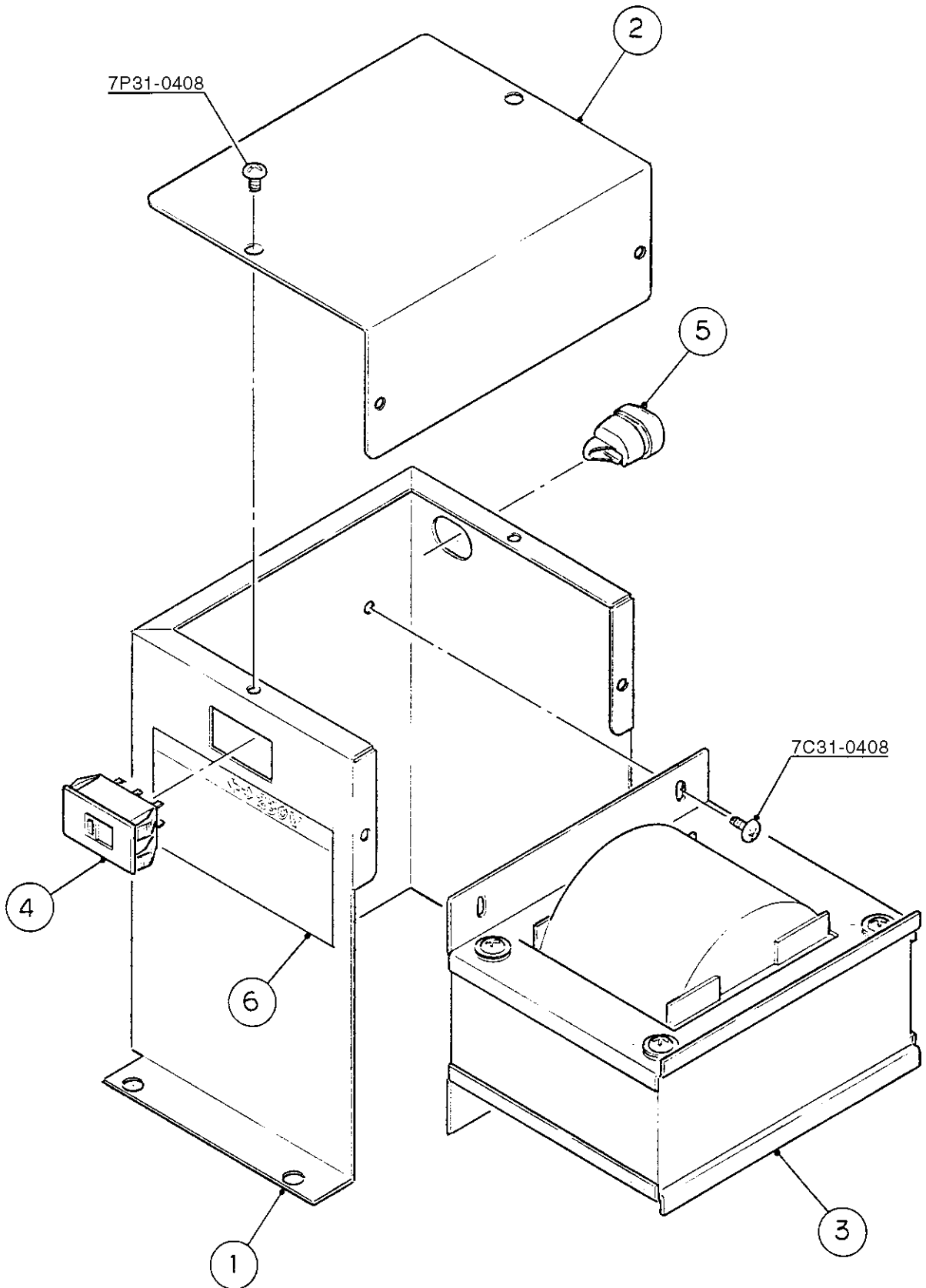


MODEL: KM-900MRF TITLE: E. LABEL LOCATION							
INDEX NO.	DESCRIPTION	MATERIAL OR MODEL NUMBER	PART NUMBER	REQ'D NUMBER			
				J-0	K-0	L-0	
1	EMBLEM	ABS	4A0560-01	1	1	1	
2	MODEL NUMBER LABEL	PETP FILM	4A1233-22	1	1	1	
3	LABEL - PENGUIN (R)	PETP FILM	4A0526-01	1	1	1	
4	MAINTENANCE LABEL	PVC FILM	326218-01	1	1	1	
5	CAUTION LABEL (H)	PVC FILM	439148-01	1	1	1	
6	WIRING LABEL	PVC FILM	3A1205-01	1	1	1	
7	RATING LABEL	PES FILM	4A1744-01	1	1	1	
8	NAMEPLATE	PES FILM	4A1740-01	1	1	1	
9	INSTRUCTION SHEET	PAPER	2A1310-01	1	1	1	
10	TAG - FAN MOTOR LEADS	PAPER	4A1494-01	1	1	1	
11	TAG - WARNING: ELECTRICAL CONNECTION	PAPER	428430-01	1	1	1	
12	MANUAL LABEL	PVC FILM	324476-01	1	1	1	
13	LABEL - CHARGE	PES FILM	4A1399-01	1	1	1	
14	LABEL - R-404A	PES FILM	4A0960-01	2	1	1	
15	LABEL - CONTROL BOARD	PVC FILM	3A1272-01	1	1	1	
16	OPERATION LABEL - VALVE	PVC FILM	439541-01	1	1	1	
17	CAUTION TAPE - R-404A	PVC FILM	4A1535L01	1	1	1	
18	INSTRUCTION LABEL	PVC FILM	444575-01	1	1	1	
19	CAUTION - REMOTE LABEL	PVC FILM	4A1491-01	1	1	1	

MODEL: KM-900MRF3		TITLE: E. LABEL LOCATION					
INDEX NO.	DESCRIPTION	MATERIAL OR MODEL NUMBER	PART NUMBER	REQ'D NUMBER			
				K-0	L-0		
1	EMBLEM	ABS	4A0560-01	1	1		
2	MODEL NUMBER LABEL	PETP FILM	4A1233-23	1	1		
3	LABEL - PENGUIN (R)	PETP FILM	4A0526-01	1	1		
4	MAINTENANCE LABEL	PVC FILM	326218-01	1	1		
5	CAUTION LABEL (H)	PVC FILM	439148-01	1	1		
6	WIRING LABEL	PVC FILM	3A1207-01	1	1		
7	RATING LABEL	PES FILM	4A1745-01	1	1		
8	NAMEPLATE	PES FILM	4A1741-01	1	1		
9	INSTRUCTION SHEET	PAPER	2A1310-01	1	1		
10	TAG - FAN MOTOR LEADS	PAPER	4A1494-01	1	1		
11	TAG - WARNING: ELECTRICAL CONNECTION	PAPER	438479-01	1	1		
12	MANUAL LABEL	PVC FILM	324476-01	1	1		
13	LABEL - CHARGE	PES FILM	4A1399-08	1	1		
14	LABEL - R-404A	PES FILM	4A0960-01	2	1		
15	LABEL - CONTROL BOARD	PVC FILM	3A1272-01	1	1		
16	OPERATION LABEL - VALVE	PVC FILM	439541-01	1	1		
17	CAUTION TAPE - R-404A	L=250	4A1535L01	1	1		
18	INSTRUCTION LABEL	PVC FILM	444575-01	1	1		
19	CAUTION - REMOTE LABEL	PVC FILM	4A1491-01	1	1		

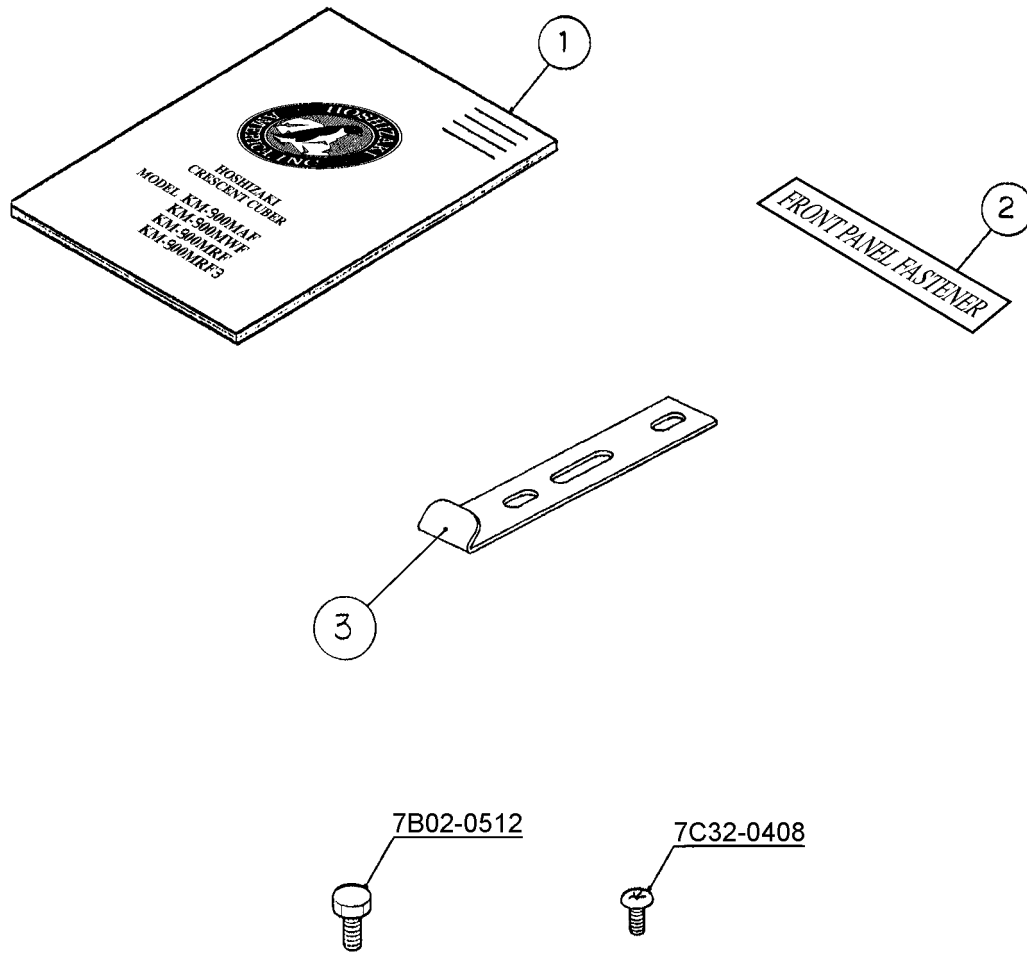


MODEL: KM-900MAF, MWF, MRF, MRF3				TITLE: F. PUMP MOTOR ASSY			
INDEX NO.	DESCRIPTION	MATERIAL OR MODEL NUMBER	PART NUMBER	REQ'D NUMBER			
				J-0	K-0	L-0	
1	PUMP MOTOR	AP-TA4(H) 120V	2U0095-01	1	1	1	
2	RETAINER	S.S	418584-01	1	1	1	
3	MECHANICAL SEAL (B)	H5-PS9, ø5	415817-01	1	1	1	
4	"O" RING	1AP18	7611-P018	1	1	1	
5	PLATE - PUMP	S.S	403013-01	1	1	1	
6	PUMP GASKET	NR	403014-01	1	1	1	
7	IMPELLER	ABS	433522-01	1	1	1	
8	PIN	S.S	414102-01	1	1	1	
9	PUMP HOUSING	ABS	211409-01	1	1	1	



HA

MODEL: <b>KM-900MRF3</b> TITLE: <b>G. TRANSFORMER BOX ASSEMBLY</b>							
INDEX NO.	DESCRIPTION	MATERIAL OR MODEL NUMBER	PART NUMBER	REQUIRED NUMBER			
				K-0	L-0		
1	TRANSFORMER BOX	-	3A1101-01	1	1		
2	TRANSFORMER BOX COVER	-	438467-01	1	1		
	T2 SCREW	4X8	7P31-0408	4	4		
3	TRANSFORMER	-	4A0817-01	1	1		
	TRUSS HEAD SCREW	4X8	7C31-0408	4	4		
4	SLIDE SWITCH	-	4A1477-01	1	1		
5	BUSHING	SR-30-1	420472-03	1	1		
6	MANUAL LABEL - TAP SWITCH	PVC FILM	439423-01	1	1		







HA

MODEL: <b>KM-900M_F/3</b> TITLE: <b>J. PACKAGING</b>							
INDEX NO.	DESCRIPTION	MATERIAL OR MODEL NUMBER	PART NUMBER	REQUIRED NUMBER			
				J-0	K-0	L-0	
1	PALLET	-	2A0853-02	1			
2	TRAY	-	2A2173-03	1			
3	WOOD BLOCK – B	-	4A0004-02	3			
4	CORNER POST	-	3A0788-07	2			
5	WOOD BLOCK – C	-	4A0004-03	2			
6	MODEL & SERIAL # LABEL	-	4A0023-01	1			
7	SIDE PROTECTOR	-	4A2304-01	3			
8	CORNER POST	-	3A0788-04	4			
9	SIDE PROTECTOR	-	4A2304-02	2			
10	CARTON	-	2A0839-30	1			