
NO. 71186

ISSUED: JULY 17, 2001

REVISED: JULY 24, 2001



**HOSHIZAKI
MODULAR CRESCENT CUBER**

MODEL

KM-630MAH

KM-630MWH

KM-630MRH

PARTS LIST

KM-630MAH	L-0	April 2001
KM-630MWH	L-0	April 2001
KM-630MRH	L-0	April 2001

MATERIAL ABBREVIATIONS

ALUMINUM

AL = Aluminum

COPPER

CU = Copper

PLASTIC

ABS = Acrylonitrile -butadiene - styrene
 AC = Polyacetal
 EVA = Ethylene vinyl acetate
 PA = Polyamide = Nylon
 PC = Polycarbonate
 PE = Polyethylene
 PES = Polyester
 PETP = Polyethylene terephthalate = Tetlon
 PP = Polypropylene
 PS = Polystyrene
 PTFE = Polytetrafluoroethylene = Teflon
 PUR = Polyurethane
 PVC = Polyvinyl chloride

RUBBER

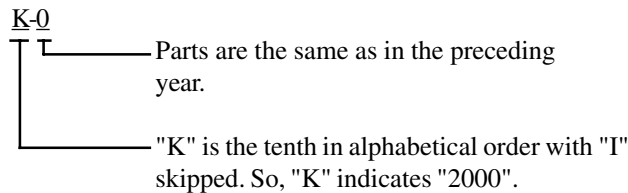
VN = Vinyl Nitrile
 EPDM = EP rubber
 NBR = Nitrile butadiene rubber
 NR = Natural rubber
 NP = Neoprene
 SLR = Silicone rubber
 SYR = Synthetic rubber
 EPH = Epichlorohydrin

STEEL

GS = Galvanized steel
 SS = Stainless steel
 PS = Plated steel
 PAS = Primed steel

AUXILIARY CODE

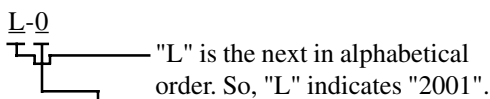
Ex.1



(Note) - = Part deleted.

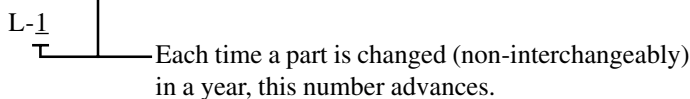
x = Part deleted and replaced by "o" (interchangeable part.)

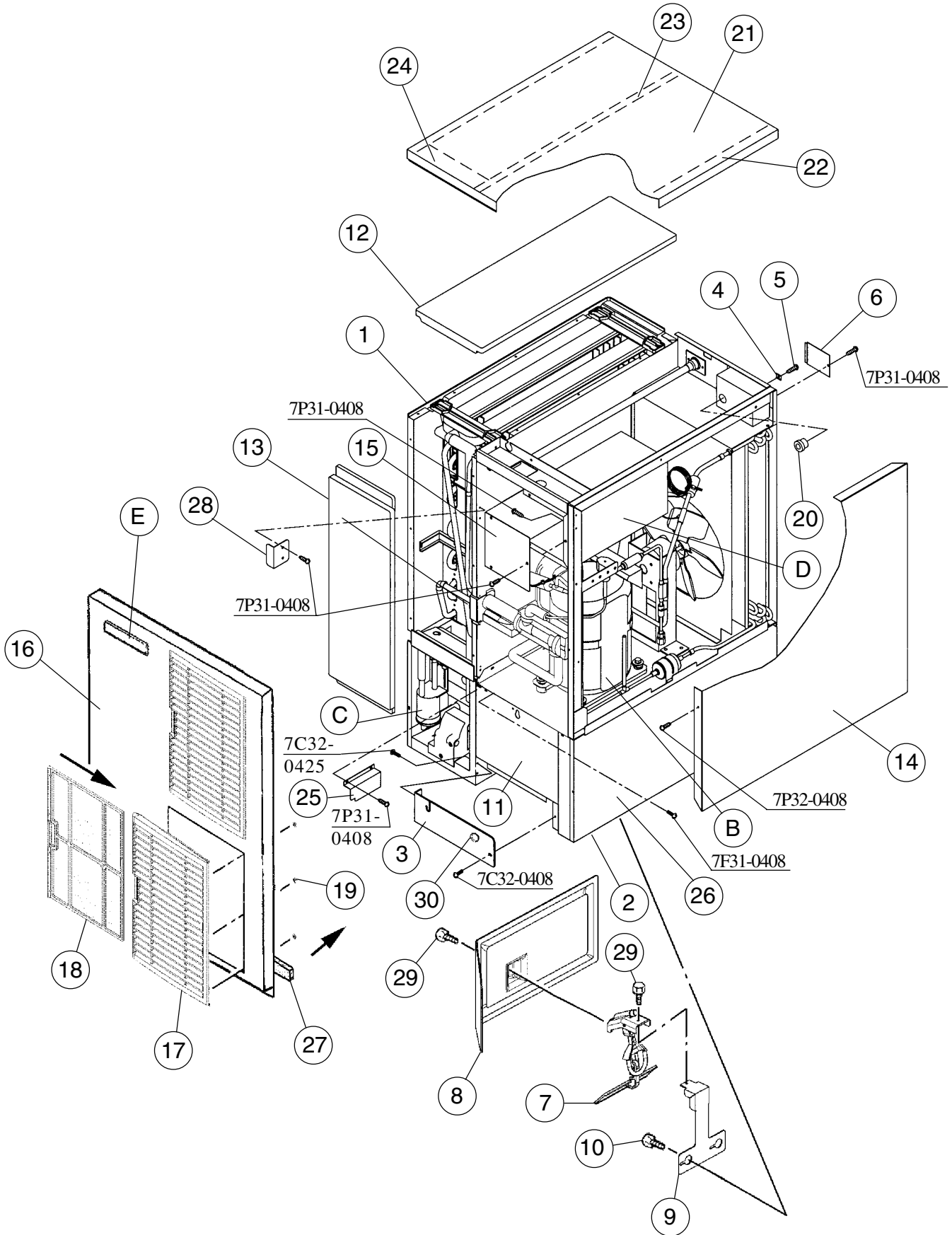
Ex.2



o = New part for "x" in the same auxiliary code.

Ex.3



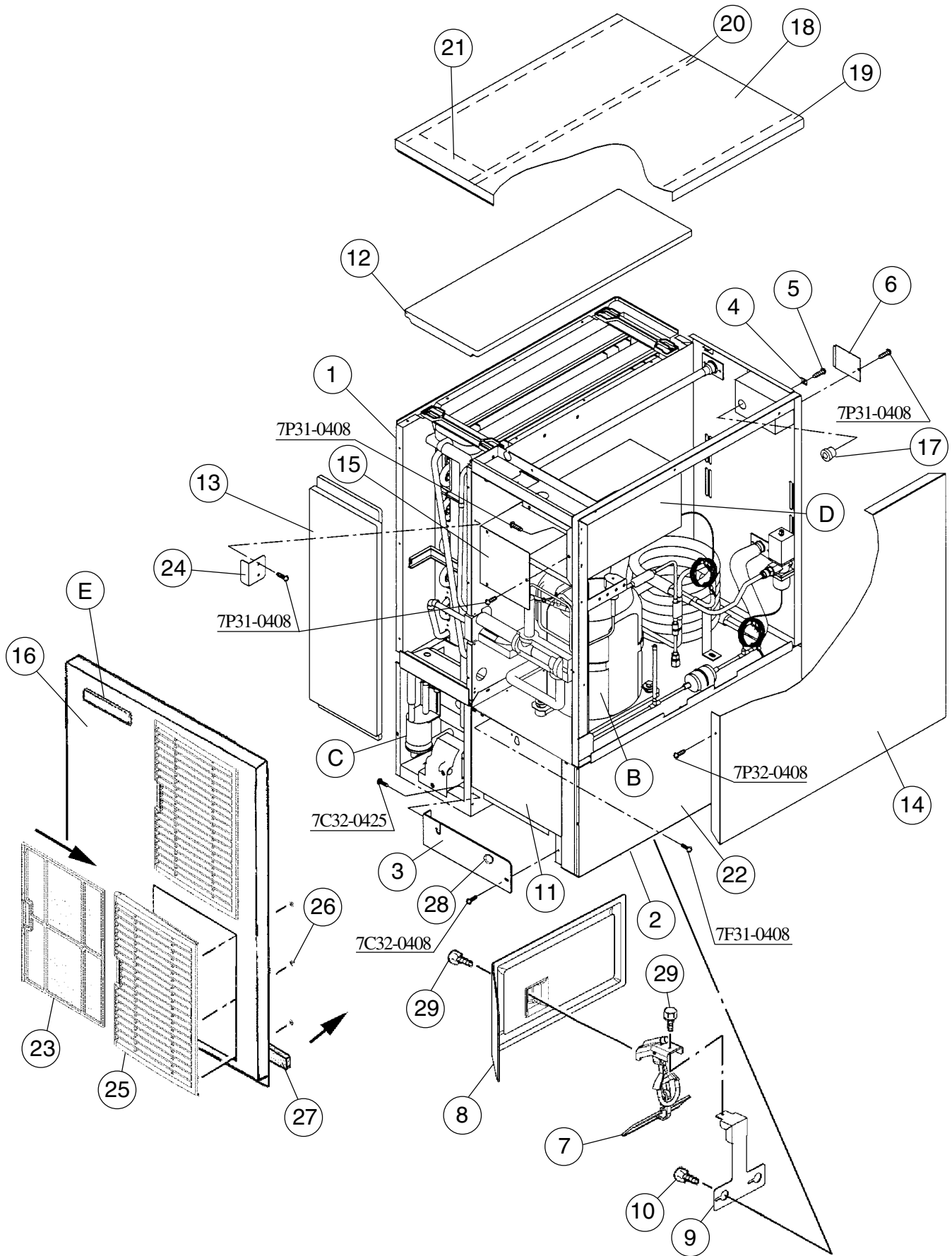


HA

MODEL: KM-630MAH TITLE: A. ICE CUBER ASSEMBLY								
INDEX NO.	DESCRIPTION	MATERIAL OR MODEL NUMBER	PART NUMBER	REQUIRED NUMBER				
				L-0				
B	REFRIGERATION CIRCUIT	-	1A0580A01	1				
C	WATER CIRCUIT	HS-1205	1A0283A02	1				
D	CONTROL BOX ASSEMBLY	-	2A2246A01	1				
	T2 SCREW	4X8	7P31-0408	3				
E	LABEL LOCATION	-	3A1908A01	1				
1	EVAP. CASE	-	1A0579G02	1				
2	BASE	-	2A2146G01	1				
	FT SCREW	4X8	7F31-0408	7				
3	FRAME	ABS	3A0217G01	1				
	TRUSS HEAD SCREW	4X8, SS	7C32-0408	1				
	TRUSS HEAD SCREW	4X25, SS	7C32-0425	2				
4	SQUARE WASHER	BRASS	433537-02	1				
5	SCREW-GROUNDING	BRASS	433304-02	1				
6	JUNCTION BOX COVER	GS	433410-01	1				
	T2 SCREW	4X8	7P31-0408	1				
7	BIN SWITCH	-	4A2430-01	1				
8	SHIELD	-	3A1438-01	1				
9	BRACKET (M)	-	3A1434-01	1				
10	THUMBSCREW	SS, ABS	415949G09	2				
11	BASE COVER	SS	321525G01	1				
12	TOP INSULATION	PP, PUR	215730G01	1				
13	FRONT INSULATION	PP, PUR	215731G02	1				
14	SIDE PANEL (R)	SS	2A2117G02	1				
	T2 SCREW	4X8, SS	7P32-0408	1				
15	CONTROL BOX COVER	GS	3A1828-01	1				
	T2 SCREW	4X8	7P31-0408	3				
16	FRONT PANEL	SS	2A2243G01	1				
17	LOUVER (A)	-	1A0547-01	2				
18	AIR FILTER (A)	-	2A2062G01	2				
19	PUSH RETAINER	-	4A2414-01	6				

HA

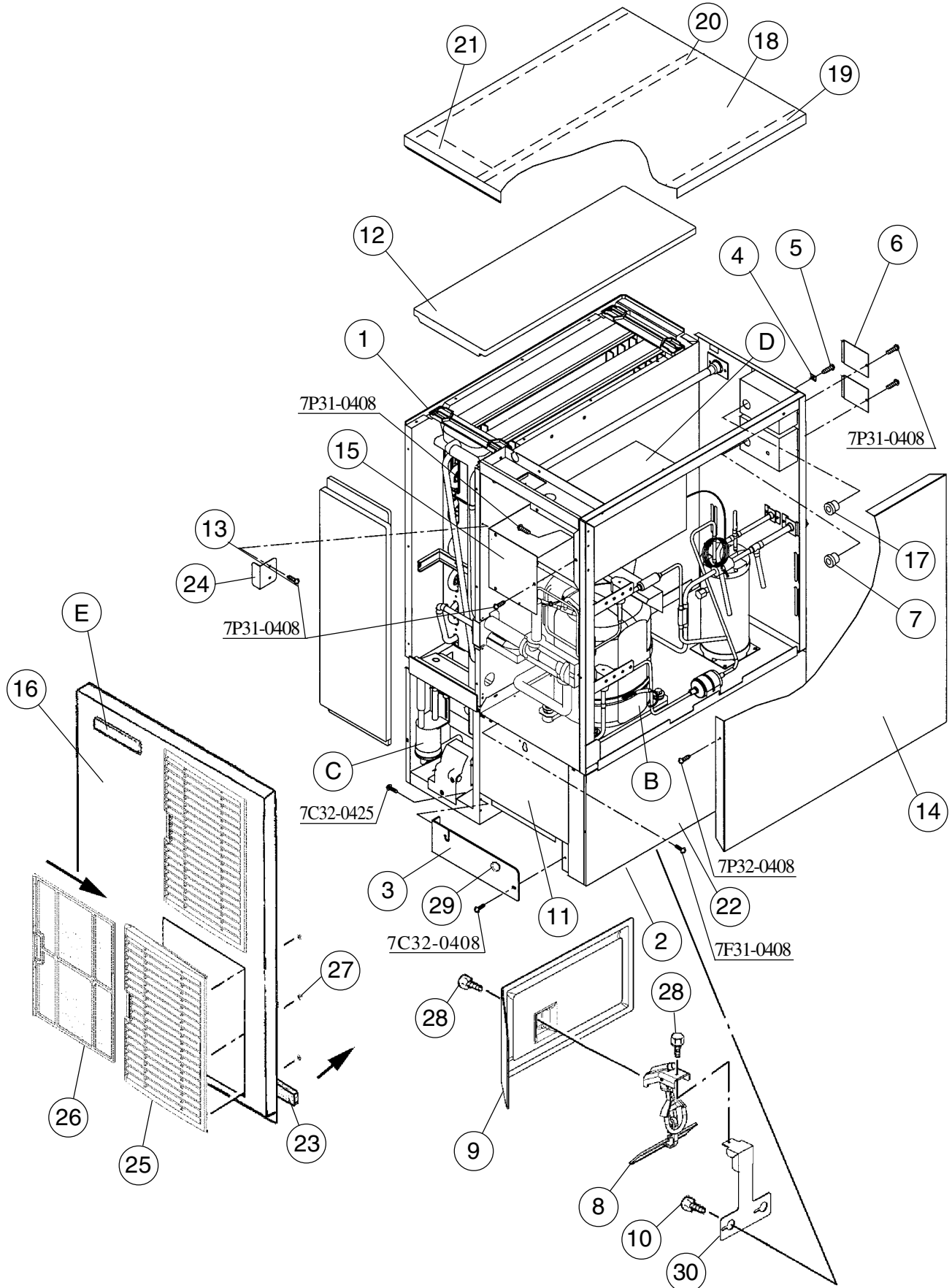
MODEL: KM-630MAH TITLE: A. ICE CUBER ASSEMBLY								
INDEX NO.	DESCRIPTION	MATERIAL OR MODEL NUMBER	PART NUMBER	REQUIRED NUMBER				
				L-0				
20	BUSHING	SR-34-2	420472-05	1				
21	TOP PANEL	SS (3A1890A01)	2A2133-01	1				
22	GASKET	PVC	427014-04	2				
23	GASKET (A)	PVC	324859-03	1				
24	INSULATION	PE FOAM	438012-01	1				
25	BARRIER	GS	4A0352-01	1				
	T2 SCREW	4X8	7P31-0408	2				
26	SIDE PANEL (R) BASE	SS	2A2147-01	1				
27	GASKET	L=554	4A0808L02	1				
28	BARRIER-INSULATION	GS	4A1167-01	1				
	T2 SCREW	4X8	7P31-0408	2				
29	THUMBSCREW	-	415949G04	2				
30	BUSHING	-	4A2536-01	1				



HA

MODEL: KM-630MWH TITLE: A. ICE CUBER ASSEMBLY								
INDEX NO.	DESCRIPTION	MATERIAL OR MODEL NUMBER	PART NUMBER	REQUIRED NUMBER				
				L-0				
B	REFRIGERATION CIRCUIT	-	1A0581A01	1				
C	WATER CIRCUIT	HS-1205	1A0283A02	1				
D	CONTROL BOX ASSEMBLY	-	2A2246A02	1				
	T2 SCREW	4X8	7P31-0408	3				
E	LABEL LOCATION	-	3A1909A01	1				
1	EVAP. CASE	-	1A0579G02	1				
2	BASE	-	2A2146G02	1				
	FT SCREW	4X8	7F31-0408	7				
3	FRAME	ABS	3A0217G01	1				
	TRUSS HEAD SCREW	4X8, SS	7C32-0408	1				
	TRUSS HEAD SCREW	4X25, SS	7C32-0425	2				
4	SQUARE WASHER	BRASS	433537-02	1				
5	SCREW-GROUNDING	BRASS	433304-02	1				
6	JUNCTION BOX COVER	GS	433410-01	1				
	T2 SCREW	4X8	7P31-0408	1				
7	BIN SWITCH	-	4A2430-01	1				
8	SHIELD	-	3A1438-01	1				
9	BRACKET (M)	-	3A1434-01	1				
10	THUMBSCREW	SS, ABS	415949G09	2				
11	BASE COVER	SS	321525G01	1				
12	TOP INSULATION	PP, PUR	215730G01	1				
13	FRONT INSULATION	PP, PUR	215731G02	1				
14	SIDE PANEL (R)	SS	2A2117G02	1				
	T2 SCREW	4X8, SS	7P32-0408	1				
15	CONTROL BOX COVER	GS	3A1828-01	1				
	T2 SCREW	4X8	7P31-0408	3				
16	FRONT PANEL	SS	2A2253G01	1				
17	BUSHING	SR-34-2	420472-05	1				
18	TOP PANEL	SS (3A1890A01)	2A2133-01	1				
19	GASKET	PVC	427014-04	2				

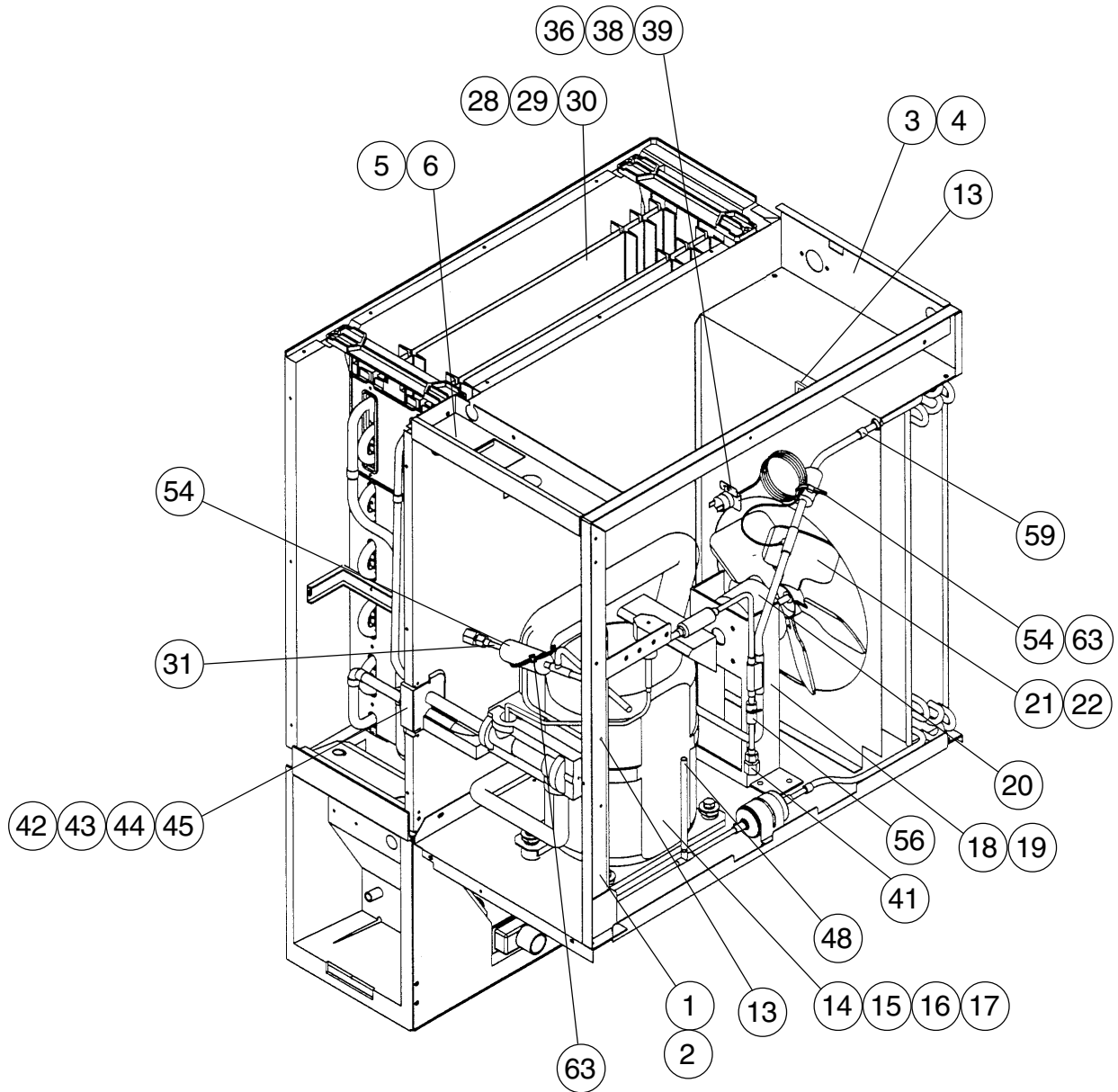
MODEL: KM-630MWH TITLE: A. ICE CUBER ASSEMBLY								
INDEX NO.	DESCRIPTION	MATERIAL OR MODEL NUMBER	PART NUMBER	REQUIRED NUMBER				
				L-0				
20	GASKET (A)	PVC	324859-03	1				
21	INSULATION	PE FOAM	438012-01	1				
22	SIDE PANEL (R) BASE	SS	2A2147-01	1				
23	AIR FILTER (A)	-	2A2062G01	1				
24	BARRIER-INSULATION	GS	4A1167-01	1				
	T2 SCREW	4X8	7P31-0408	2				
25	LOUVER (A)	-	1A0547-01	1				
26	PUSH RETAINER	-	4A2414-01	3				
27	GASKET	L=554	4A0808L02	1				
28	BUSHING	-	4A2536-01	1				
29	THUMBSCREW	-	415949G04	2				

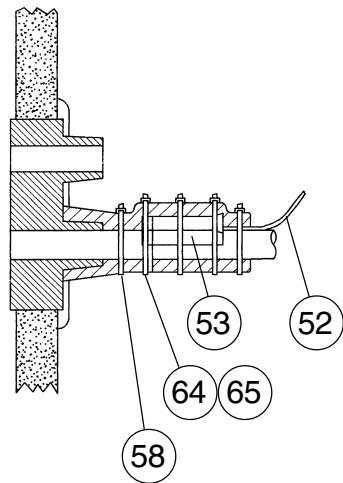
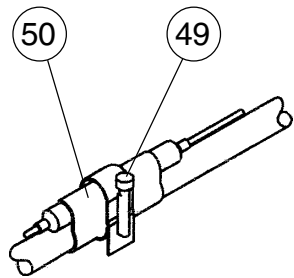
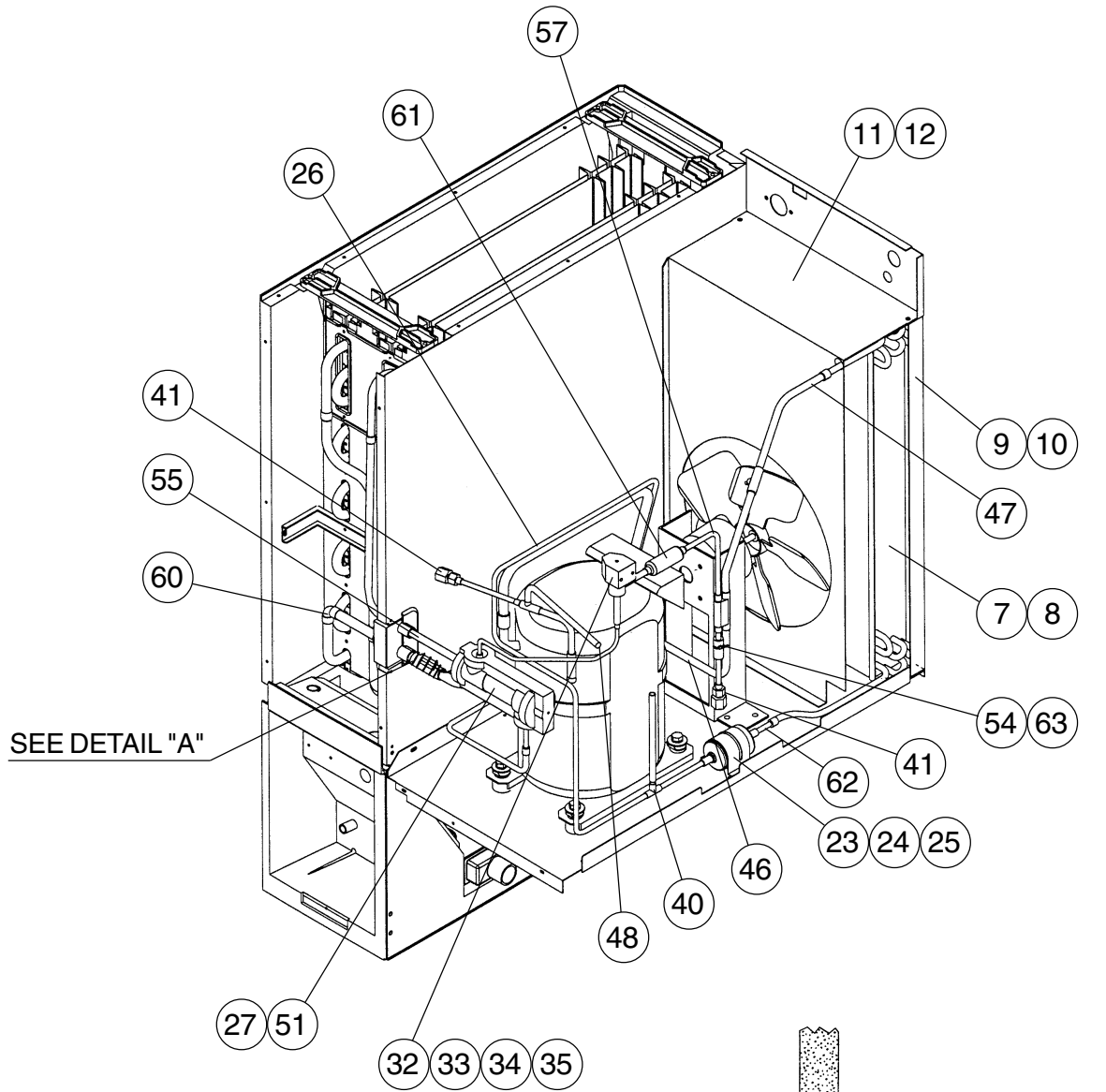


MODEL: KM-630MRH TITLE: A. ICE CUBER ASSEMBLY								
INDEX NO.	DESCRIPTION	MATERIAL OR MODEL NUMBER	PART NUMBER	REQUIRED NUMBER				
				L-0				
B	REFRIGERATION CIRCUIT	-	1A0582A01	1				
C	WATER CIRCUIT	HS-1205	1A0283A02	1				
D	CONTROL BOX ASSEMBLY	-	2A2246A02	1				
	T2 SCREW	4X8	7P31-0408	3				
E	LABEL LOCATION	-	3A1910A01	1				
1	EVAP. CASE	-	1A0579G02	1				
2	BASE	-	2A2146G03	1				
	FT SCREW	4X8	7F31-0408	7				
3	FRAME	ABS	3A0217G01	1				
	TRUSS HEAD SCREW	4X8	7C32-0408	1				
	TRUSS HEAD SCREW	4X25	7C32-0425	2				
4	SQUARE WASHER	BRASS	433537-02	2				
5	SCREW-GROUNDING	BRASS	433304-02	2				
6	JUNCTION BOX COVER	GS	433410-01	2				
	T2 SCREW	4X8	7P31-0408	2				
7	BUSHING	SR-34-2	420472-05	1				
8	BIN SWITCH	-	4A2430-01	1				
9	SHIELD	-	3A1438-01	1				
10	THUMBSCREW	SS, ABS	415949G09	2				
11	BASE COVER	SS	321525G01	1				
12	TOP INSULATION	PP, PUR	215730G01	1				
13	FRONT INSULATION	PP, PUR	215731G02	1				
14	SIDE PANEL (R)	SS	2A2117G02	1				
	T2 SCREW	4X8, SS	7P32-0408	1				
15	CONTROL BOX COVER	GS	3A1828-01	1				
	T2 SCREW	4X8	7P31-0408	3				
16	FRONT PANEL (A)	SS	2A2253G01	1				
17	BUSHING	SR-30-1	420472-03	1				
18	TOP PANEL	(3A1890A01) SS	2A2133-01	1				
19	GASKET	PVC	427014-04	2				

HA

MODEL: KM-630MRH TITLE: A. ICE CUBER ASSEMBLY									
INDEX NO.	DESCRIPTION	MATERIAL OR MODEL NUMBER	PART NUMBER	REQUIRED NUMBER					
				L-0					
20	GASKET (A)	PVC	324859-03	1					
21	INSULATION	PE FOAM	438012-01	1					
22	SIDE PANEL (R) BASE	SS	2A2147-01	1					
23	GASKET	L=554	4A0808L02	1					
24	BARRIER – INSULATION	GS	4A1167-01	1					
	T2 SCREW	4X8	7P31-0408	2					
25	LOUVER (A)	-	1A0547-01	1					
26	AIR FILTER (A)	-	2A2062G01	1					
27	PUSH RETAINER	-	4A2414-01	3					
28	THUMBSCREW	-	415949G04	2					
29	BUSHING	-	4A2536-01	1					
30	BRACKET (M)	-	3A1434-01	1					

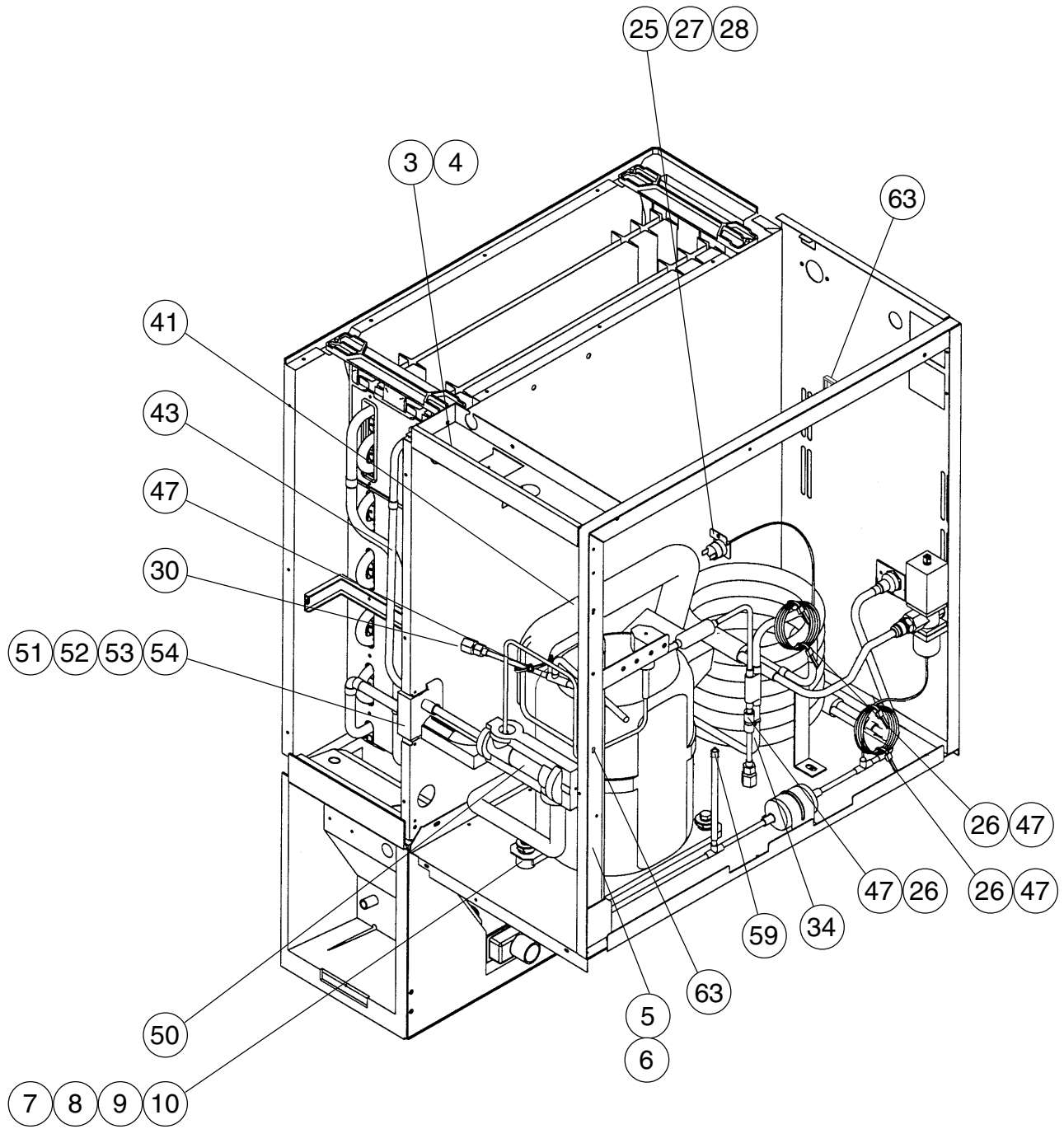


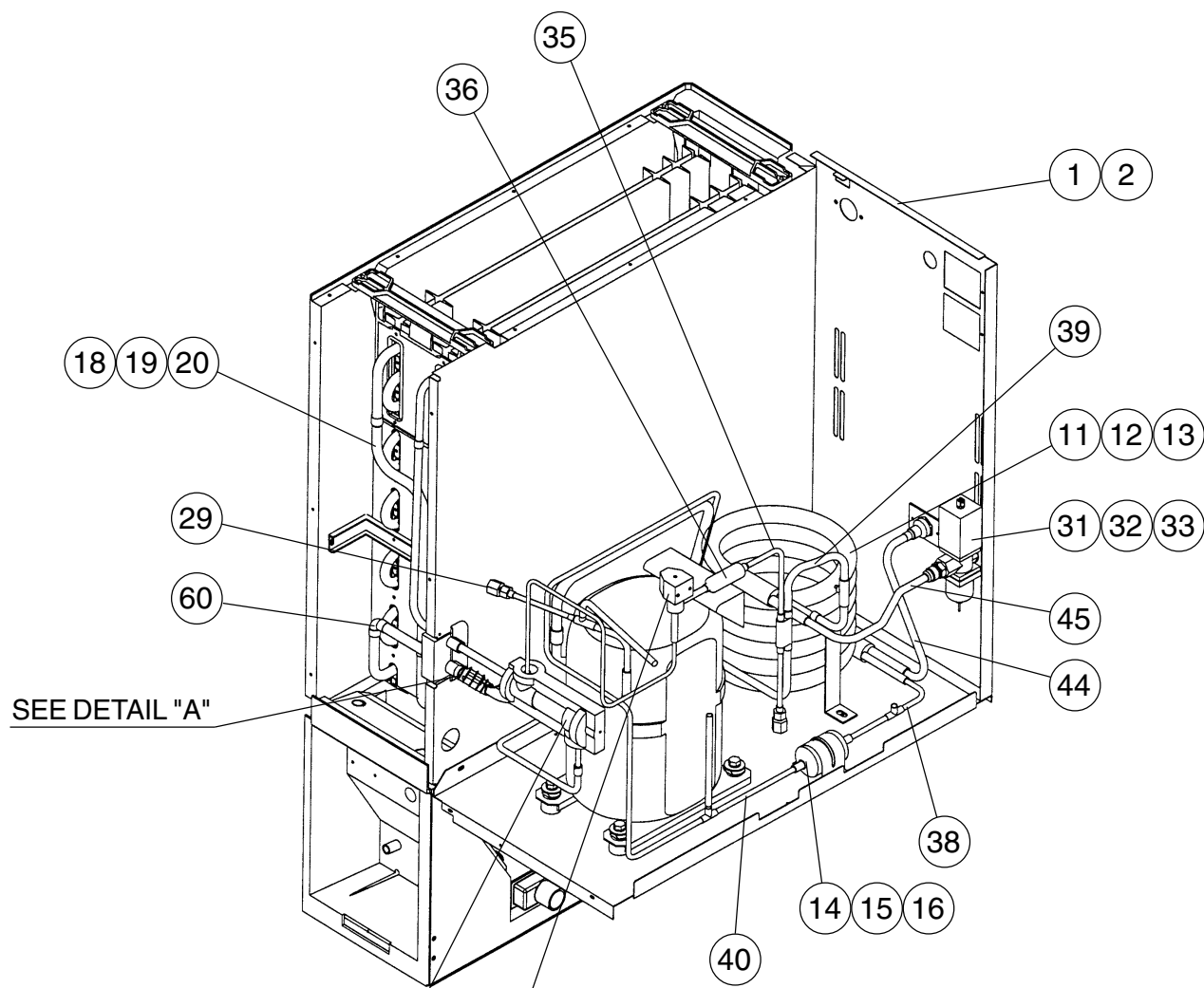


MODEL: KM-630MAH TITLE: B. REFRIGERATION CIRCUIT								
INDEX NO.	DESCRIPTION	MATERIAL OR MODEL NUMBER	PART NUMBER	REQUIRED NUMBER				
				L-0				
1	SIDE FRAME	-	2A1301G01	1				
2	T2 SCREW	4x8	7P31-0408	4				
3	REAR PANEL	-	3A1133G01	1				
4	T2 SCREW	4x8	7P31-0408	3				
5	TOP FRAME (A)	-	3A1893-01	1				
6	T2 SCREW	4x8	7P31-0408	2				
7	CONDENSER	-	218912-01	1				
8	T2 SCREW	4x8	7P31-0408	2				
9	BARRIER	-	433693-02	1				
10	T2 SCREW	4x8	7P31-0408	2				
11	SHROUD	-	2A1325-01	1				
12	T2 SCREW	4x8	7P31-0408	2				
13	CLAMP	-	4A2338-01	2				
14	COMPRESSOR	RS64C2E-CAV-219	4A2302-01	1				
15	SPACER	-	434404-01	4				
16	GROMMET	527-0039-04	434403-01	4				
17	BOLT	8x45	437889-01	4				
18	FAN MOTOR BRACKET	-	327180-01	1				
19	HEX HEAD BOLT W/WASHER	(LF) 5x12	7B0130512	4				
20	FAN MOTOR	U99081 7190-1031	440911-01	1				
21	FAN BLADE	AD10CW32	444898-01	1				
22	SELF LOCKING NUT	NO. 8-32	7N21I0832	4				
23	DRIER	CW-0325-S	4A1413-01	1				
24	DRIER BRACKET	-	4A0807-01	1				
25	T2 SCREW	4x8	7P31-0408	2				
26	HEAT EXCHANGER	-	2A1586G01	1				
27	EXP. VALVE	HFE-10NHDU-3	4A1684-01	1				
28	EVAPORATOR	-	106396G01	1				
29	T2 SCREW	4x16, SS	7P32-0416	4				
30	T2 SCREW	4x12, SS	7P32-0412	2				

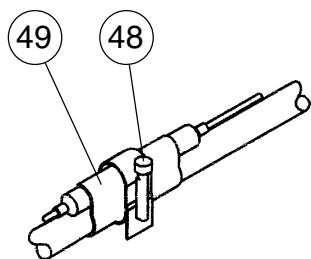
MODEL: KM-630MAH TITLE: B. REFRIGERATION CIRCUIT								
INDEX NO.	DESCRIPTION	MATERIAL OR MODEL NUMBER	PART NUMBER	REQUIRED NUMBER				
				L-0				
31	COPPER TUBE – ACCESS	-	4A2025G01	1				
	VALVE	-						
32	VALVE BODY	-	440352-01	1				
33	COIL – VALVE	ABS-25-1-HD-2	440353-01	1				
34	BOLT	-	440353F01	1				
35	TRUSS HEAD SCREW	4x8	7C31-0408	2				
36	PRESSURE SWITCH	ACB-1UB09	433441-07	1				
37	-	-	-	-				
38	PRESSURE SWITCH BRACKET	-	434938-01	1				
39	T2 SCREW	4x8	7P31-0408	1				
40	COPPER TUBE (E) – HIGH SIDE	COPPER	3A1213G01	1				
41	ACCESS VALVE	TCJ-2F20NHDU-1	457729-01	1				
42	RUBBER TUBE (A)	RUBBER	3A1044-01	1				
43	RUBBER TUBE (B)	-	3A1045-01	1				
44	INSULATION HOLDER	-	4A1550-01	1				
45	T2 SCREW	4x8, SS	7P32-0408	2				
46	COPPER TUBE (A) – HIGH SIDE	COPPER	3A1157G02	1				
47	COPPER TUBE (B) – HIGH SIDE	COPPER	4A1782G01	1				
48	ENDCAPS	-	4A1413F01	2				
49	CLAMP	-	443461-02	1				
50	HOLDER –EXP. VALVE	3/8"	3A0107-01	1				
51	EXP. VALVE COVER	-	3A0944-01	1				
52	THERMISTOR	-	429006-03	1				
53	HOLDER – THERMISTOR	-	427430-01	1				
54	INSULATION TUBE	L=40	7762-1020	3				
55	COPPER TUBE – LOW SIDE	COPPER	3A1193G01	1				

MODEL: KM-630MAH TITLE: B. REFRIGERATION CIRCUIT								
INDEX NO.	DESCRIPTION	MATERIAL OR MODEL NUMBER	PART NUMBER	REQUIRED NUMBER				
				L-0				
56	-	-	-	-				
57	COPPER TUBE (A) – HOT GAS	COPPER	4A1755-01	1				
58	CABLE TIE	CV-200	7920-0010	3				
59	BUSHING	OCB-625	428394-03	1				
60	ELBOW	COPPER	417395-03	1				
61	STRAINER	-	441569-02	1				
62	COPPER TUBE (F) – HIGH SIDE	COPPER	4A1108-01	1				
63	CABLE TIE	CV-150	7920-0003	4				
64	INSULATION THERMISTOR (A)	PE FOAM	439368-01	1				
65	INSULATION THERMISTOR (B)	PE FOAM	439368-02	1				

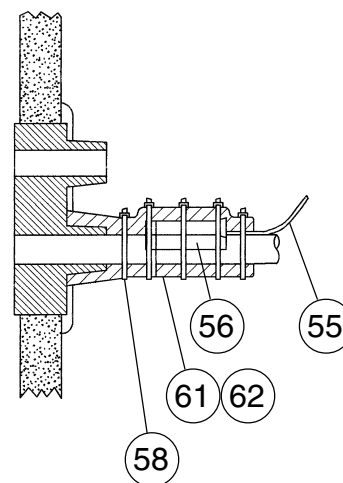




SEE DETAIL "A"



DETAILED HOLDER / EXPANSION VALVE

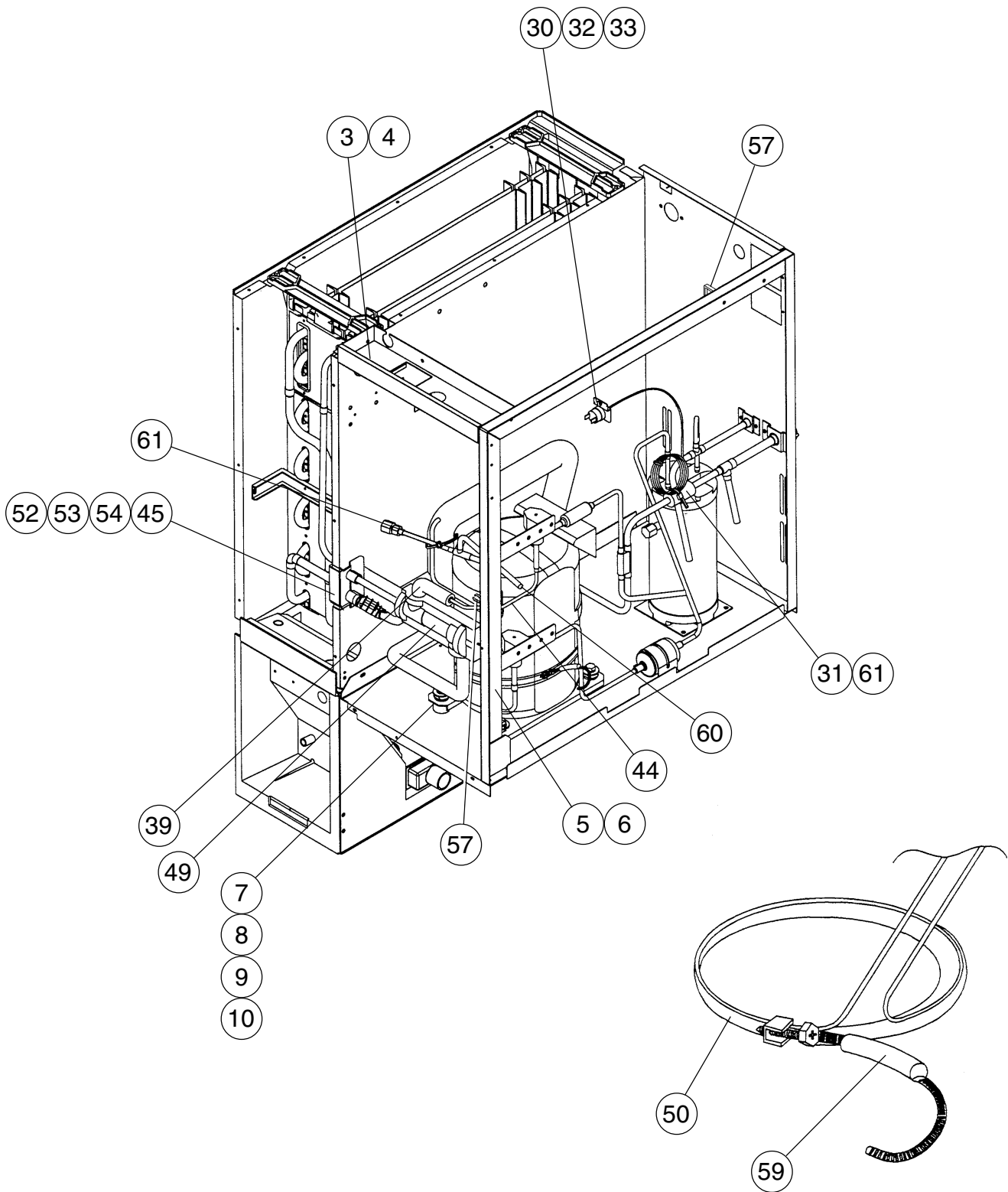


DETAIL "A" THERMISTOR ATTACHMENT

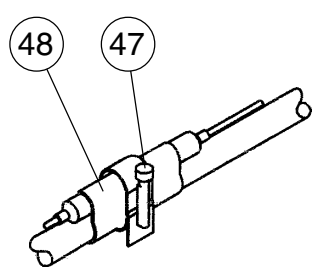
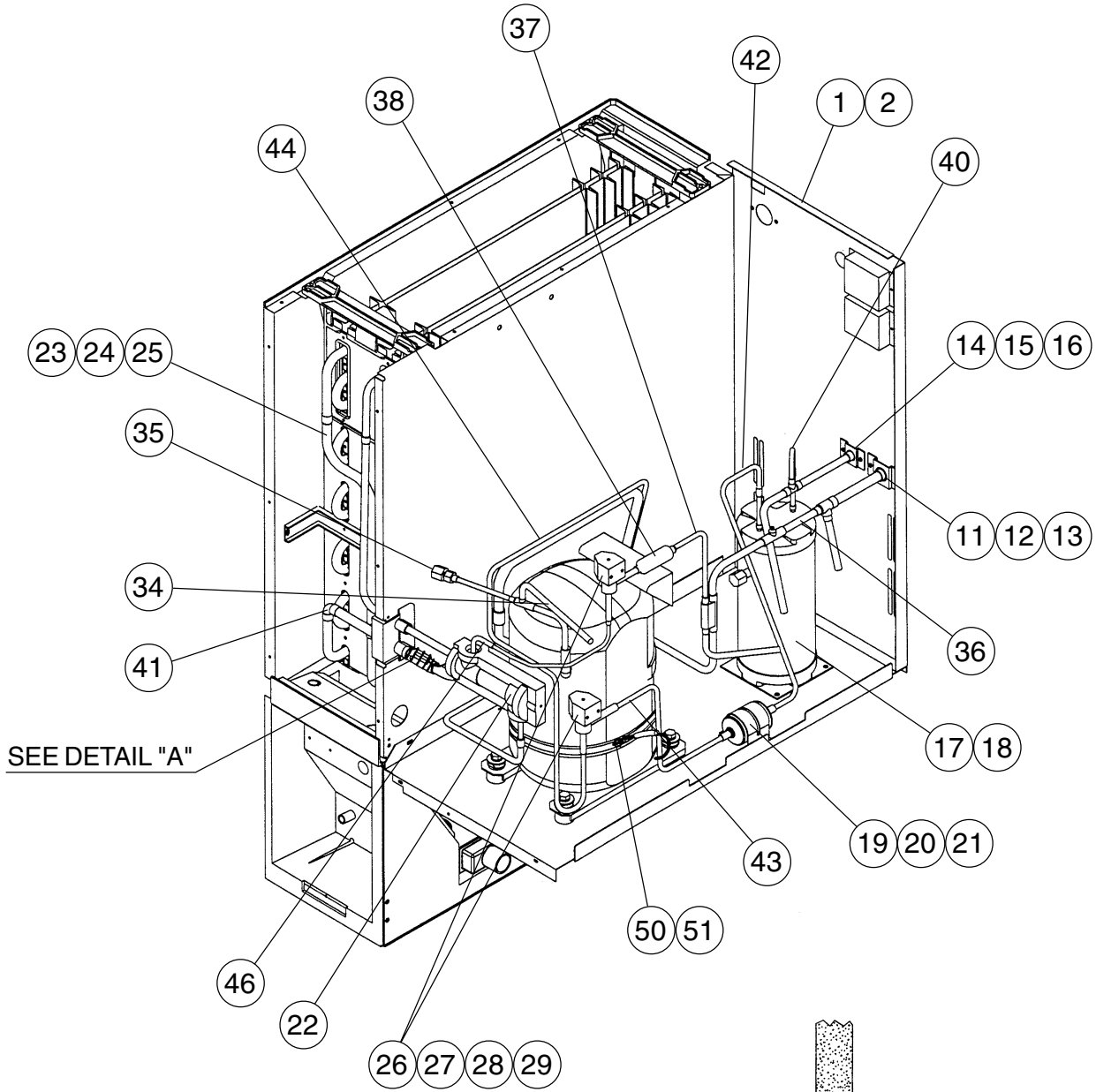
MODEL: KM-630MWH TITLE: B. REFRIGERATION CIRCUIT								
INDEX NO.	DESCRIPTION	MATERIAL OR MODEL NUMBER	PART NUMBER	REQUIRED NUMBER				
				L-0				
1	REAR PANEL	-	2A1335G01	1				
2	T2 SCREW	4x8	7P31-0408	5				
3	TOP FRAME (A)	-	3A1893-01	1				
4	T2 SCREW	4x8	7P31-0408	2				
5	SIDE FRAME	-	2A1301G01	1				
6	T2 SCREW	4x8	7P31-0408	4				
7	COMPRESSOR	RS64C2E-CAV-219	4A2302-01	1				
8	SPACER	-	434404-01	4				
9	GROMMET	527-0039-04	434403-01	4				
10	BOLT	8x45	437889-01	4				
11	WASHER	-	4A0655-03	3				
12	CONDENSER	-	212929-04	1				
13	HEX HEAD BOLT WWASHER	(LF) 5x10	7B0130510	3				
14	DRIER	CW-0325-S	4A1413-01	1				
15	DRIER BRACKET	-	4A0807-01	1				
16	T2 SCREW	4x8	7P31-0408	2				
17	EXP. VALVE	HFE-10NHDU-03	4A1684-01	1				
18	EVAPORATOR	-	106396G01	1				
19	T2 SCREW	4x16	7P31-0416	4				
20	T2 SCREW	4x12	7P31-0412	2				
21	VALVE BODY	70	440352-01	1				
22	COIL-VALVE	ABS-25-1-HD-2	440353-01	1				
23	BOLT	-	440353F01	1				
24	TRUSS HEAD SCREW	4x8	7C31-0408	2				
25	PRESSURE SWITCH	ACB-2UB04	433441-05	1				
26	INSULATION TUBE	L=40	7762-1020	3				
27	PRESSURE SWITCH BRACKET	-	434938-01	1				

MODEL: KM-630MWH TITLE: B. REFRIGERATION CIRCUIT								
INDEX NO.	DESCRIPTION	MATERIAL OR MODEL NUMBER	PART NUMBER	REQUIRED NUMBER				
				L-0				
28	T2 SCREW	4x8	7P31-0408	1				
29	COPPER TUBE – ACCESS VALVE	COPPER	4A2025G01	1				
30	ACCESS VALVE	TCJ-2F20NHJU-1	457729-01	2				
31	MALE CONNECTOR	-	4A1284-01	1				
32	WATER REGULATOR	V46DA-3	4A0911-03	1				
33	TRUSS HEAD SCREW	4x6	7P31-0406	2				
34	COPPER TUBE (A) – HIGH SIDE	COPPER	3A1157G02	1				
35	COPPER TUBE (A) – HOT GAS	COPPER	4A1755-01	1				
36	STRAINER	-	441569-02	1				
37	-	-	-	-				
38	COPPER TUBE (B) – HIGH SIDE	COPPER	4A1780G01	1				
39	COPPER TUBE (C) – HIGH SIDE	COPPER	4A1787G01	1				
40	COPPER TUBE (E) – HIGH SIDE	COPPER	3A1213G02	1				
41	HEAT EXCHANGER	-	2A1586G01	1				
42	-	-	-	-				
43	COPPER TUBE – LOW SIDE	COPPER	3A1193G02	1				
44	COPPER TUBE (A) – WATER CIRCUIT	COPPER	4A1788G01	1				
45	COPPER TUBE (B) – WATER CIRCUIT	COPPER	3A1331G01	1				
46	-	-	-	-				
47	CABLE TIE	CV-150	7920-0003	6				
48	CLAMP	-	443461-02	1				
49	HOLDER / EXP. VALVE	3/8	3A0107-01	1				
50	EXP. VALVE COVER	-	3A0944-01	1				
51	RUBBER TUBE (A)	RUBBER	3A1044-01	1				
52	RUBBER TUBE (B)	RUBBER	3A1045-01	1				

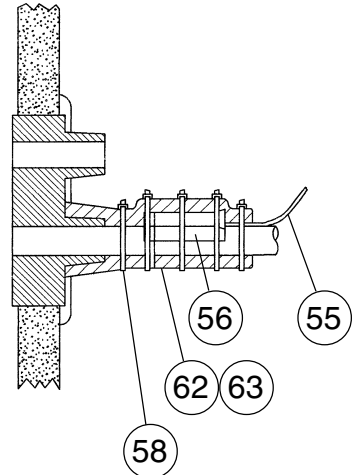
MODEL: KM-630MWH TITLE: B. REFRIGERATION CIRCUIT								
INDEX NO.	DESCRIPTION	MATERIAL OR MODEL NUMBER	PART NUMBER	REQUIRED NUMBER				
				L-0				
53	INSULATION HOLDER	-	4A1550-01	1				
54	T2 SCREW	4x8, SS	7P32-0408	2				
55	THERMISTOR	-	429006-03	1				
56	HOLDER – THERMISTOR	-	427430-01	1				
57	-	-	-	-				
58	CABLE TIE	CV-200	7920-0010	3				
59	ENDCAP	-	4A1413F01	2				
60	ELBOW	COPPER	417395-03	1				
61	INSULATION THERMISTOR (A)	PE FOAM	439368-01	1				
62	INSULATION THERMISTOR (B)	PE FOAM	439368-02	1				
63	CLAMP	-	4A2338-01	2				



DETAILED CRANKCASE HEATER



DETAILED HOLDER / EXPANSION VALVE



DETAIL "A" THERMISTOR ATTACHMENT

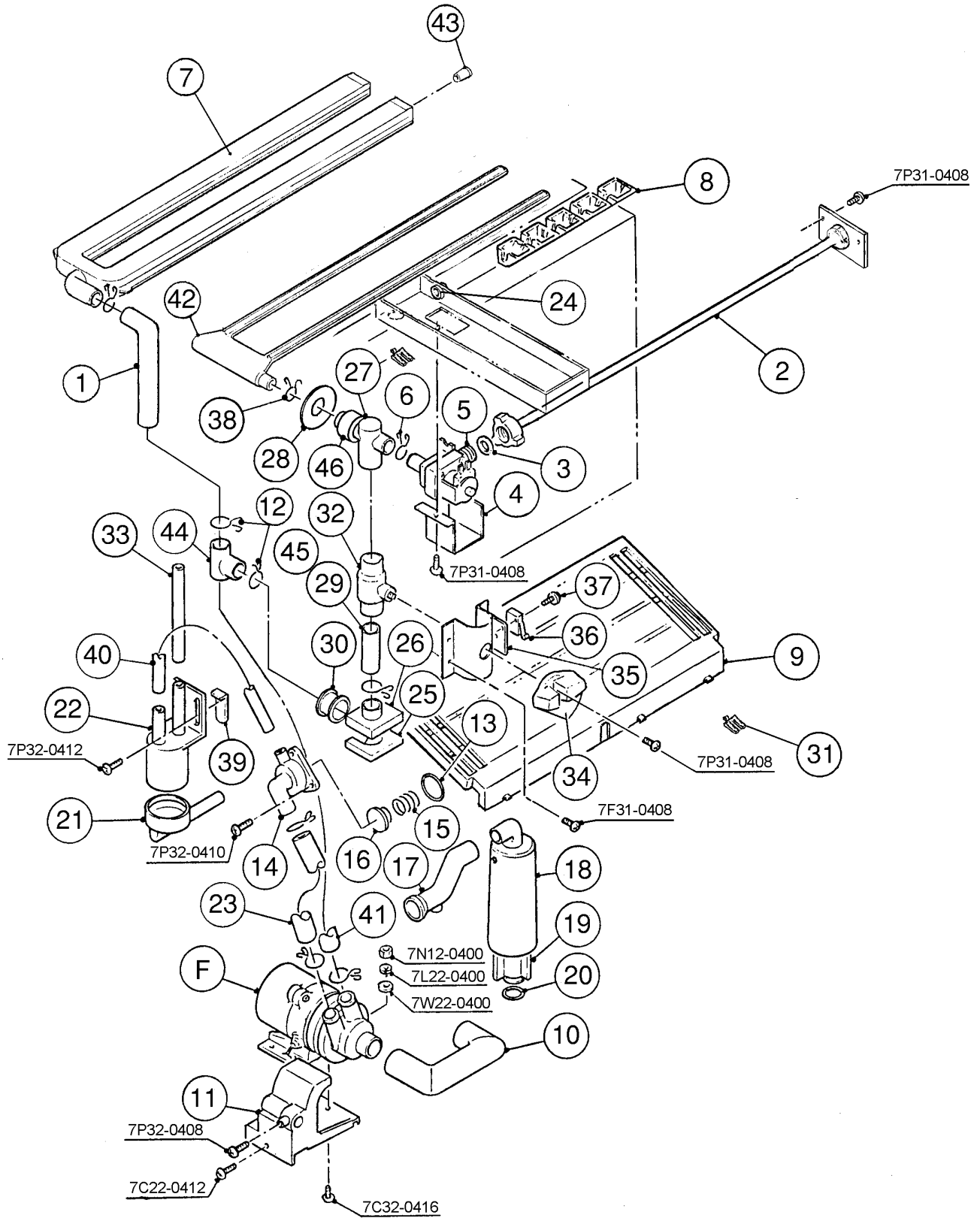
MODEL: KM-630MRH TITLE: B. REFRIGERATION CIRCUIT								
INDEX NO.	DESCRIPTION	MATERIAL OR MODEL NUMBER	PART NUMBER	REQUIRED NUMBER				
				L-0				
1	REAR PANEL	-	2A1328G01	1				
2	T2 SCREW	4x8	7P31-0408	5				
3	TOP FRAME	-	3A1893-01	1				
4	T2 SCREW	4x8	7P31-0408	2				
5	SIDE FRAME	-	2A1301G02	1				
6	T2 SCREW	4x8	7P31-0408	4				
7	COMPRESSOR	RS64C2E-CAV-219	4A2302-01	1				
8	SPACER	-	434404-01	4				
9	GROMMET	527-0039-04	434403-01	4				
10	BOLT	8x45	437889-01	4				
11	COUPLING	-	434136G01	1				
12	TUBE HOLDER – L	-	438245-01	1				
13	T2 SCREW	4x8	7P31-0408	2				
14	COUPLING	-	433751G01	1				
15	TUBE HOLDER – S	-	438246-01	1				
16	T2 SCREW	4x8	7P31-0408	2				
17	RECEIVER TANK	-	437596-01	1				
18	HEX HEAD BOLT WWASHER	5x10 (LF)	7B0130510	3				
19	DRIER	CW-0325-S	4A1413-01	1				
20	DRIER BRACKET	-	4A0807-01	1				
21	T2 SCREW	4x12	7P31-0412	2				
22	EXP. VALVE	HFE-10NHDU-3	4A1684-01	1				
23	EVAPORATOR	-	106396G01	1				
24	T2 SCREW	4x16, SS	7P32-0416	4				
25	T2 SCREW	4x12, SS	7P32-0412	2				
26	VALVE BODY	70	440352-01	2				
27	COIL – VALVE	ABS-25-1-HD-2	440353-01	2				

HA

MODEL: KM-630MRH TITLE: B. REFRIGERATION CIRCUIT								
INDEX NO.	DESCRIPTION	MATERIAL OR MODEL NUMBER	PART NUMBER	REQUIRED NUMBER				
				L-0				
28	BOLT	-	440353F01	2				
29	TRUSS HEAD SCREW	4x8	7C31-0408	4				
30	PRESSURE SWITCH	ACB-1UB09	433441-07	1				
31	INSULATION TUBE	L=40	7762-1020	1				
32	PRESSURE SWITCH BRACKET	-	434938-01	1				
33	T2 SCREW	4x8	7P31-0408	1				
34	COPPER TUBE – ACCESS VALVE	COPPER	4A2025G01	1				
35	ACCESS VALVE	TCJ-2F20NHDU-1	457729-01	1				
36	COPPER TUBE – HIGH SIDE	COPPER	3A1156G01	1				
37	COPPER TUBE (A) – HOT GAS	COPPER	4A1755-01	1				
38	STRAINER	-	441569-02	1				
39	INSULATION TUBE	L=150	7762-1030	-				
40	COPPER TUBE (D) – HIGH SIDE	COPPER	3A1199G01	1				
41	ELBOW	COPPER	417395-03	1				
42	COPPER TUBE (C) – HIGH SIDE	COPPER	438004-01	1				
43	COPPER TUBE (E) – HIGH SIDE	COPPER	325140-01	1				
44	HEAT EXCHANGER	-	2A1587G01	1				
45	T2 SCREW	4x8, SS	7P32-0408	2				
46	COPPER TUBE – LOW SIDE	COPPER	3A1193G01	1				
47	CLAMP	-	443461-02	1				
48	HOLDER / EXP. VALVE	3/8	3A0107-01	1				
49	EXP. VALVE COVER	-	3A0944-01	1				
50	CRANKCASE HEATER	018-0038-00	434186-01	1				
51	T2 SCREW	4x8	7P31-0408	1				
52	RUBBER TUBE (A)	RUBBER	3A1044-01	1				

HA

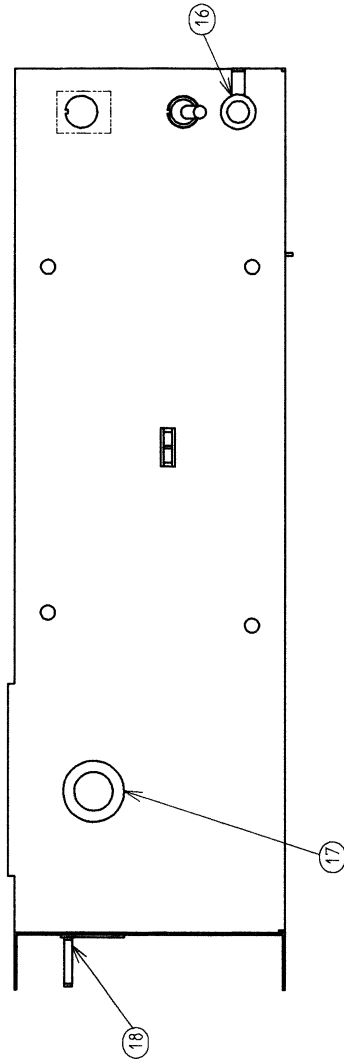
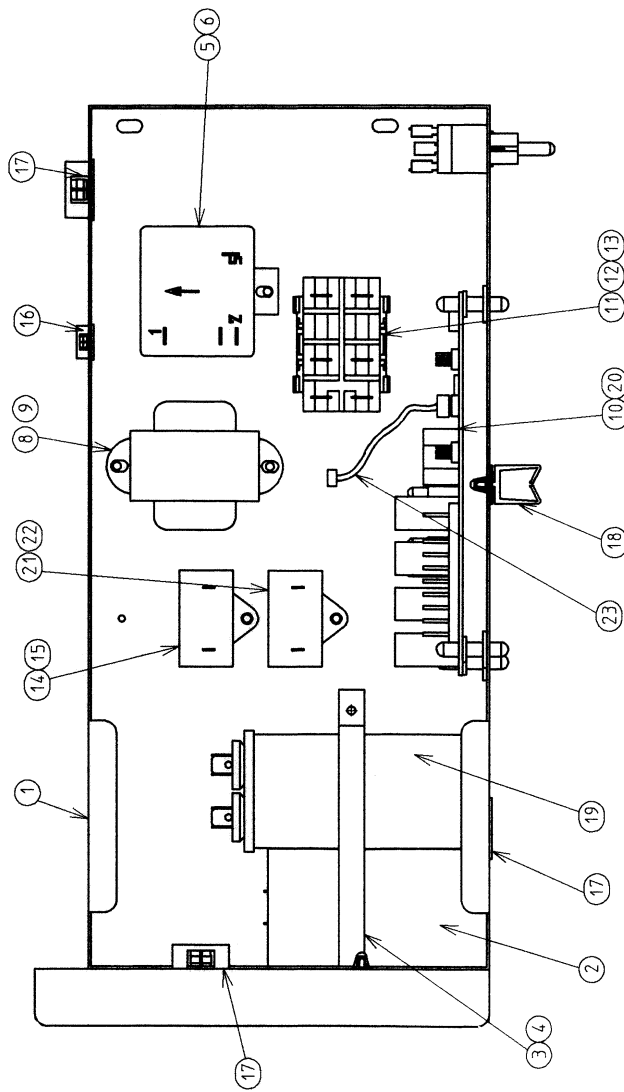
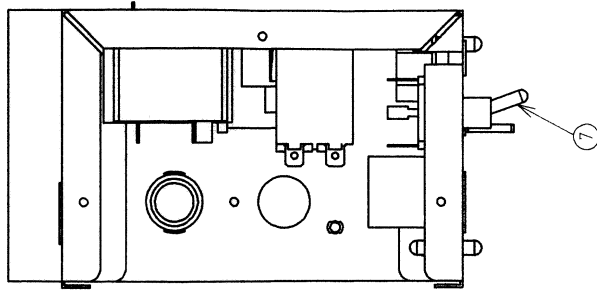
MODEL: KM-630MRH TITLE: B. REFRIGERATION CIRCUIT								
INDEX NO.	DESCRIPTION	MATERIAL OR MODEL NUMBER	PART NUMBER	REQUIRED NUMBER				
				L-0				
53	RUBBER TUBE (B)	RUBBER	3A1045-01	1				
54	INSULATION HOLDER	-	4A1550-01	1				
55	THERMISTOR	-	429006-03	1				
56	HOLDER – THERMISTOR	-	427430-01	1				
57	CLAMP	-	4A2338-01	2				
58	CABLE TIE	CV-200	7920-0010	3				
59	SILICONE HOSE	ID 3/8" X .0625" thick	7730-0912	-				
60	ENDCAPS	-	4A1413F01	-				
61	CABLE TIE	CV-150	7920-0003	3				
62	INSULATION THERMISTOR (A)	PE FOAM	439368-01	1				
63	INSULATION THERMISTOR (B)	PE FOAM	439368-02	1				



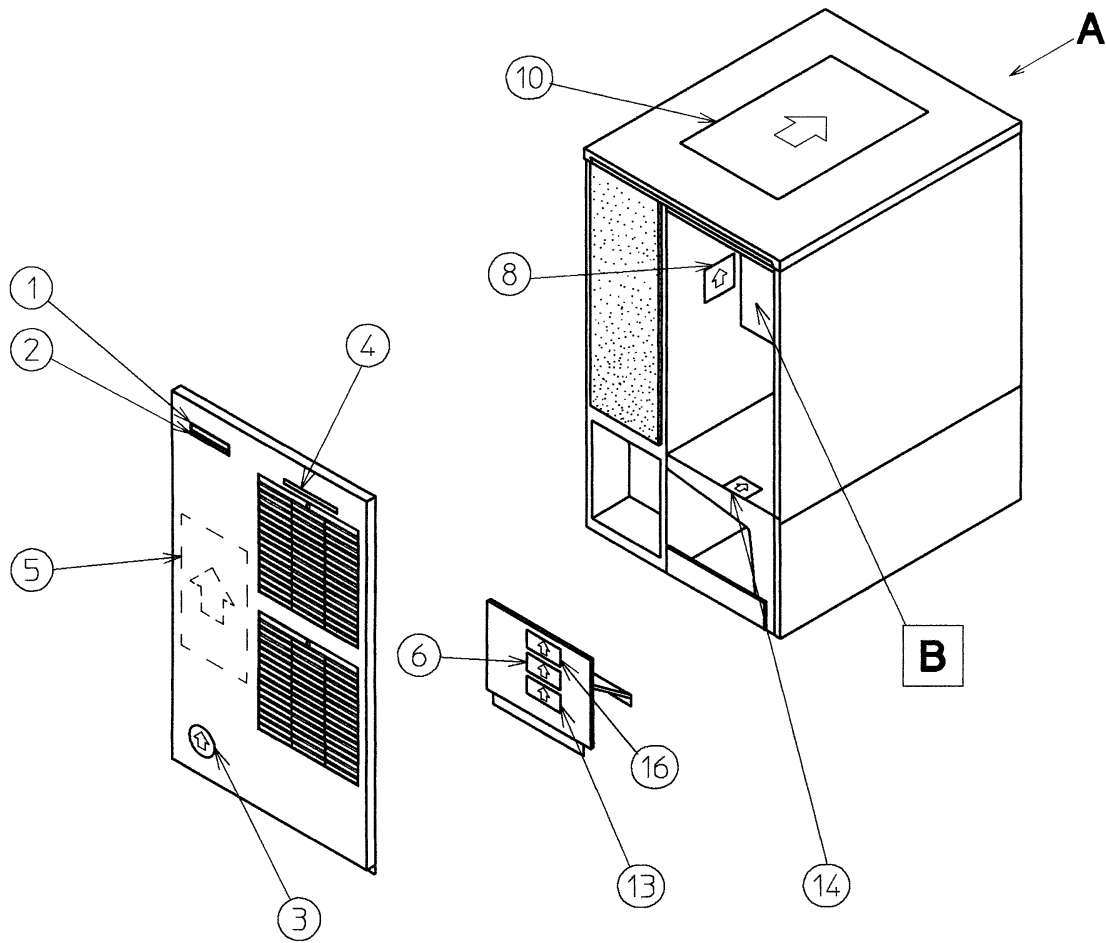
MODEL: KM-630MAH, MWH, MRH TITLE: C. WATER CIRCUIT								
INDEX NO.	DESCRIPTION	MATERIAL OR MODEL NUMBER	PART NUMBER	REQUIRED NUMBER				
				L-0				
F	PUMP MOTOR ASSEMBLY	(S-0613)	321444A01	1				
	TRUSS HEAD SCREW	4X16, SS	7C32-0416	1				
	FLAT WASHER	M4, SS	7W22-0400	1				
	SPLIT LOCK WASHER	M4, SS	7L22-0400	1				
	HEX NUT	M4, SS	7N12-0400	1				
1	RUBBER HOSE (A)	EPDM	4A1551-01	1				
2	WATER SUPPLY PIPE	COPPER	4A0768G04	1				
	T2 SCREW	4X8	7P31-0408	2				
3	RUBBER GASKET	SI.R	413854-03	1				
4	WATER VALVE BRACKET	GS	321443-01	1				
	T2 SCREW	4X8	7P31-0408	1				
5	WATER VALVE	J248-032	3U0111-02	1				
6	HOSE CLAMP	18MM, SS	427443-05	1				
7	SPRAY TUBE	PE	1A0260-02	1				
8	SPRAY GUIDE (A)	PE	208586-01	6				
9	CUBE GUIDE	ABS	212088-01	1				
10	SUCTION HOSE	EPDM	433466-01	1				
11	PUMP MOTOR BRACKET	ABS	211408-01	1				
	FLAT HEAD SCREW	4X12, SS	7F32-0412	1				
12	HOSE CLAMP	25MM, SS	427443-03	9				
13	"O" RING	1AG35	7611-G035	1				
14	VALVE HOUSING – DRAIN	ABS	321001-01	1				
	T2 SCREW	4X10, SS	7P32-0410	3				
15	SPRING	SS	322110-01	1				
16	VALVE SHEET	EPDM	433705-01	1				
17	DRAIN HOSE	SANTOPRENE	433468-01	1				
18	OVERFLOW CAP	PE	321002-01	1				
19	OVERFLOW PIPE	ABS	430722-01	1				
20	"O" RING	EPDM, AS568-218	4A1234-01	1				

HA

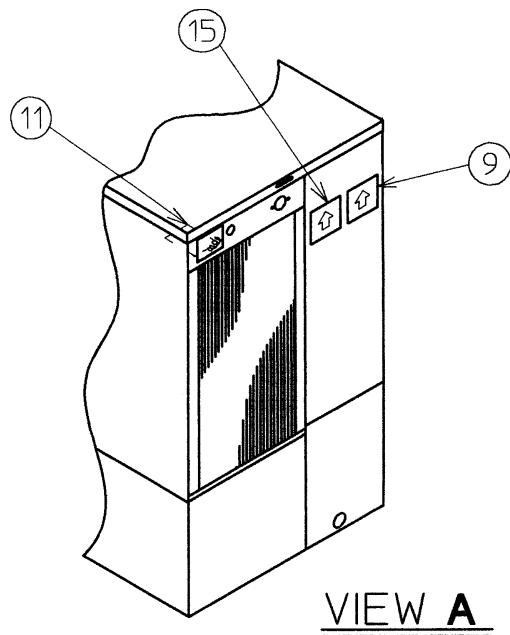
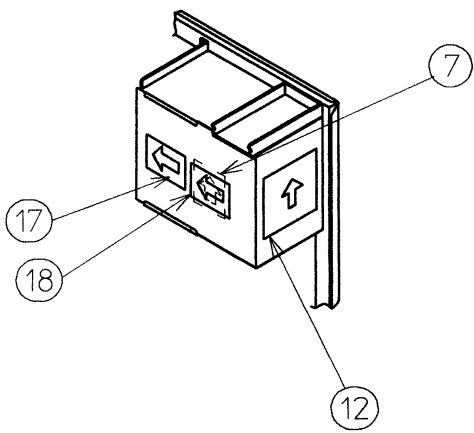
MODEL: KM-630MAH, MWH, MRH TITLE: C. WATER CIRCUIT								
INDEX NO.	DESCRIPTION	MATERIAL OR MODEL NUMBER	PART NUMBER	REQUIRED NUMBER				
				L-0				
21	CONNECTOR – FLOAT SWITCH	-	426799-01	1				
22	FLOAT SWITCH	163795	4A0886-01	1				
	T2 SCREW	4X12, SS	7P32-0412	1				
23	VINYL HOSE	L=110	7716-2025	1				
24	BUSHING	OCB-875	428394-04	1				
25	CORNER INSULATION (A)	PE FOAM	439376-01	1				
26	CORNER INSULATION (B)	PE FOAM	439392-01	1				
27	TEE	SANTOPRENE	4A0177-01	1				
28	FLANGE	EPDM	439267-01	1				
29	RUBBER HOSE (B)	EPDM	4A1551-02	1				
30	RUBBER RING	EPDM	439236-01	1				
31	WIRE SADDLE	VWS4238-C	4A0338-02	4				
32	BALL VALVE	S-0761	439293-01	1				
33	SILICONE HOSE	L=140	7730I3812	1				
34	HANDLE	JH1352	215383-01	1				
	T2 SCREW	4X8	7P31-0408	1				
35	VALVE HOLDER	GS	3A1178-01	1				
	FT SCREW	4X8	7F31-0408	3				
36	MICRO SWITCH	V3L-111-D8	4A0365-01	1				
37	TAPPING SCREW	3x14	431415-02	2				
38	HOSE CLAMP	20MM, SS	427443-06	1				
39	FLOAT SWITCH STOP	SS	4A0137-01	1				
40	SILICONE HOSE	L=140	7730I3896	1				
41	VINYL HOSE	L=250	7716-2025	1				
42	WATER SUPPLY TUBE	PE	2A0079-01	1				
43	PLUG	EPDM/SY.R	4A0176-01	2				
44	DISTRIBUTOR	ABS	432426-01	1				
45	INSULATION TUBE	L=370	7762-2636	1				
46	INSULATION (E)	-	4A0392-01	1				



MODEL: KM-630MAH, MWH, MRH TITLE: D. CONTROL BOX ASSEMBLY								
INDEX NO.	DESCRIPTION	MATERIAL OR MODEL NUMBER	PART NUMBER	REQUIRED NUMBER				
				L-0				
1	CONTROL BOX	GS	3A1989G01	1				
2	CAPACITOR – STARTING	88-108MFD 250VAC	3A0076-03	1				
3	STRAP	GS	4A2262-02	1				
4	T2 SCREW	4X8	7P31-0408	1				
5	STARTER	040-0001-54	4A1107-12	1				
6	T2 SCREW	4X8	7P31-0408	1				
7	TOGGLE SWITCH	8966K84	443119-01	1				
8	TRANSFORMER	26D285H	3A0172-01	1				
9	T2 SCREW	4X8	7P31-0408	2				
10	BOARD SUPPORT	CBLS37-M	4A0336-03	4				
11	MAGNETIC CONTACTOR	VC20	428393-01	1				
12	BRACKET	BW9154	428393F01	1				
13	T2 SCREW	4X8	7P31-0408	1				
14	CAPACITOR	5.5MFD 250VAC	443192-03	1				
15	T2 SCREW	4X10	7P31-0410	1				
16	BUSHING	OCB-500	428394-02	2				
17	BUSHING	OCB-875	428394-04	3				
18	WIRE SADDLE	VWS4238-C	4A0338-02	2				
19	CAPACITOR - RUN	15MFD 370VAC	3A2005-08	1				
20	CONTROLLER BOARD	HOS-001A	2A1410-01	1				
21	CAPACITOR (MAH ONLY)	5MFD 250VAC	443192-02	1				
22	T2 SCREW (MAH ONLY)	4X10	7P31-0408	1				
23	RESISTOR WIRE HARNESS	-	4A2200G01	1				

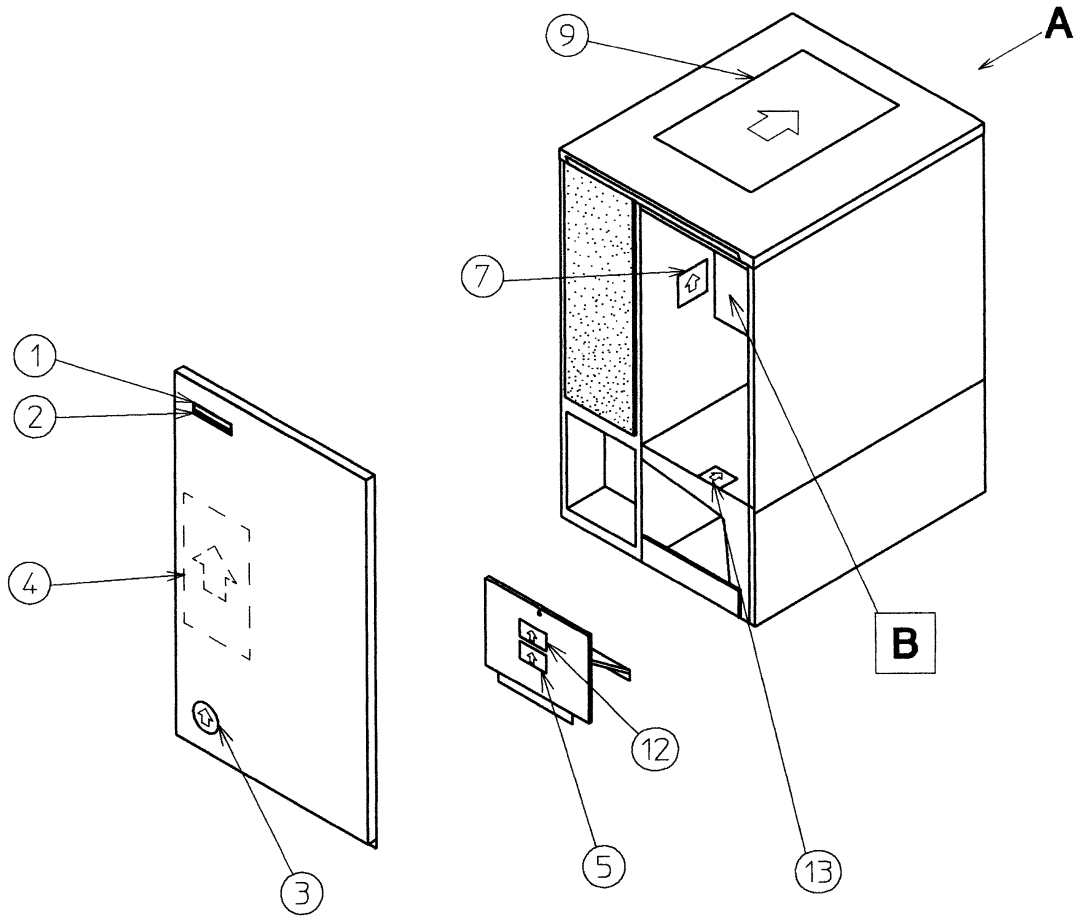


DETAIL B - CONT. BOX

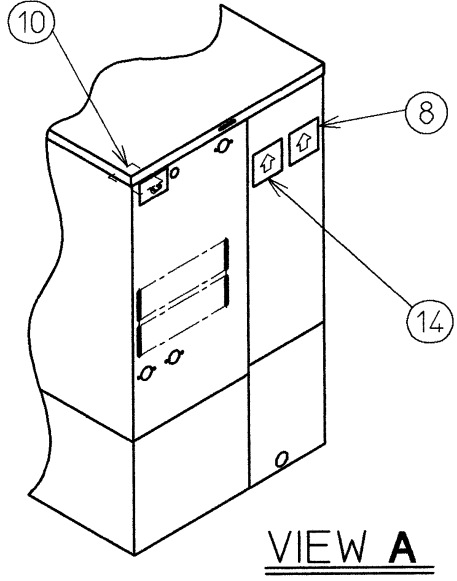
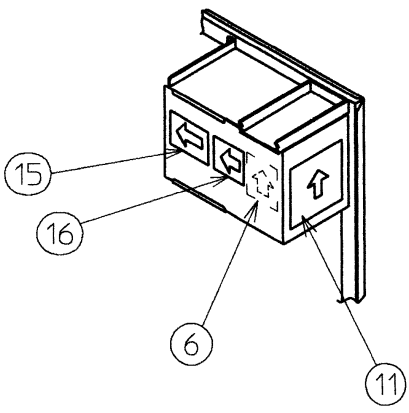


VIEW A

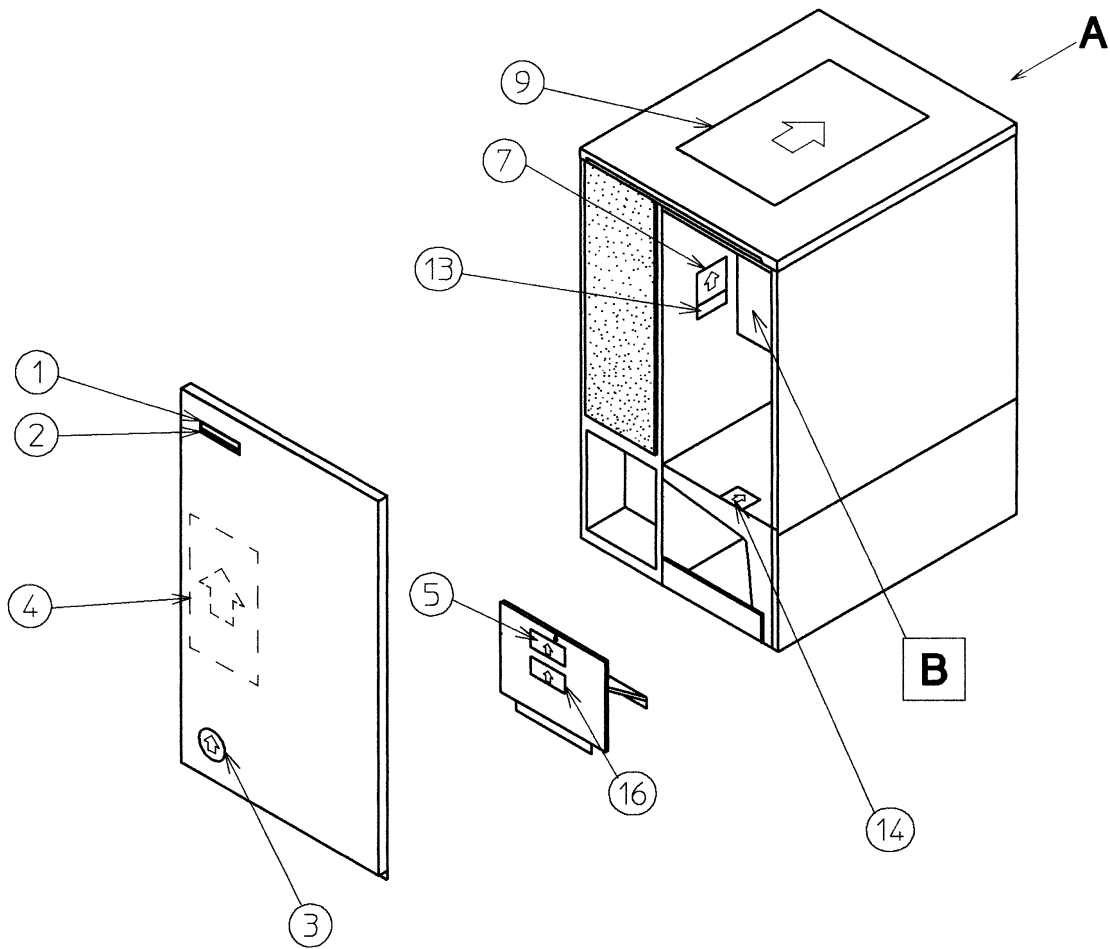
MODEL: KM-630MAH TITLE: E. LABEL LOCATION								
INDEX NO.	DESCRIPTION	MATERIAL OR MODEL NUMBER	PART NUMBER	REQUIRED NUMBER				
				L-0				
1	EMBLEM	PETP FILM	4A0560-01	1				
2	MODEL NUMBER LABEL	PETP FILM	4A2356-29	1				
3	LABEL – PENGUIN (R)	PETP FILM	4A0526-01	1				
4	LABEL – AIR FILTER	PETP FILM	426177-01	1				
5	MAINTENANCE LABEL	PVC FILM	326218-01	1				
6	CAUTION LABEL (H)	PVC FILM	439150-01	1				
7	WIRING LABEL	PVC FILM	3A1981-01	1				
8	RATING LABEL	PES FILM	4A2410-01	1				
9	NAMEPLATE	PES FILM	4A2402-01	1				
10	INSTRUCTION SHEET	PAPER	2A2143-01	1				
11	TAG WARNING: ELECTRICAL CONNECTION	PAPER	428430-01	1				
12	MANUAL LABEL	PVC FILM	4A2512-01	1				
13	OPERATION LABEL – VALVE	PVC FILM	439541-01	1				
14	LABEL – R404A	PES FILM	4A0960-01	1				
15	INSTRUCTION LABEL	PVC FILM	444575-01	1				
16	CAUTION LABEL (F)	PVC FILM	439146-01	1				
17	LABEL – CONTROL BOARD	PVC FILM	3A1272-01	1				
18	LABEL (B) CONTROL BOARD	-	4A2528-01	1				



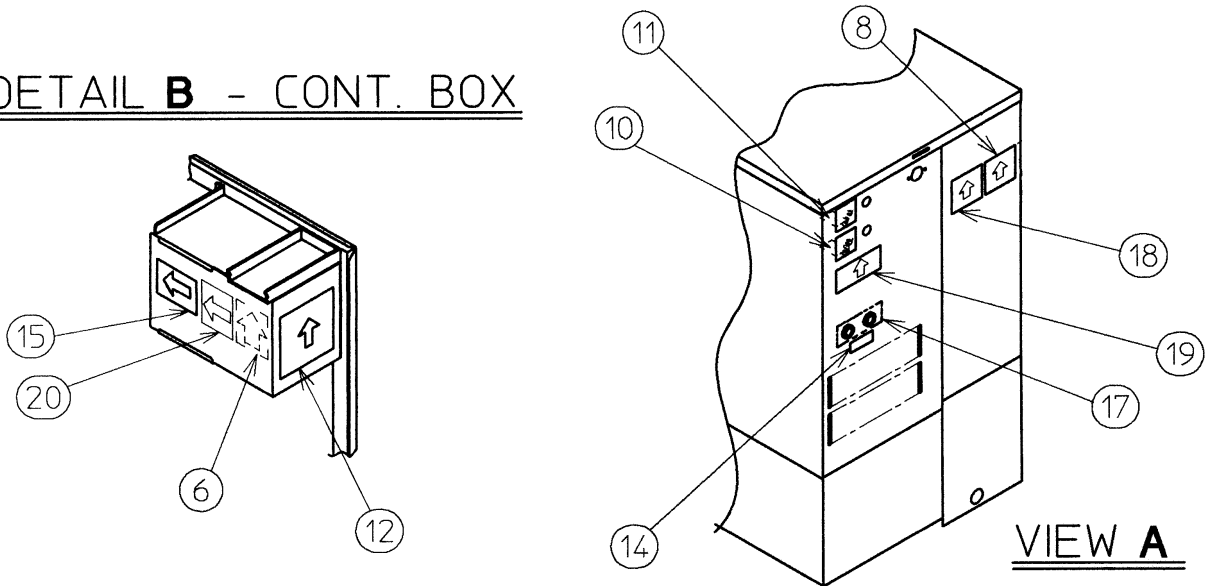
DETAIL B - CONT. BOX



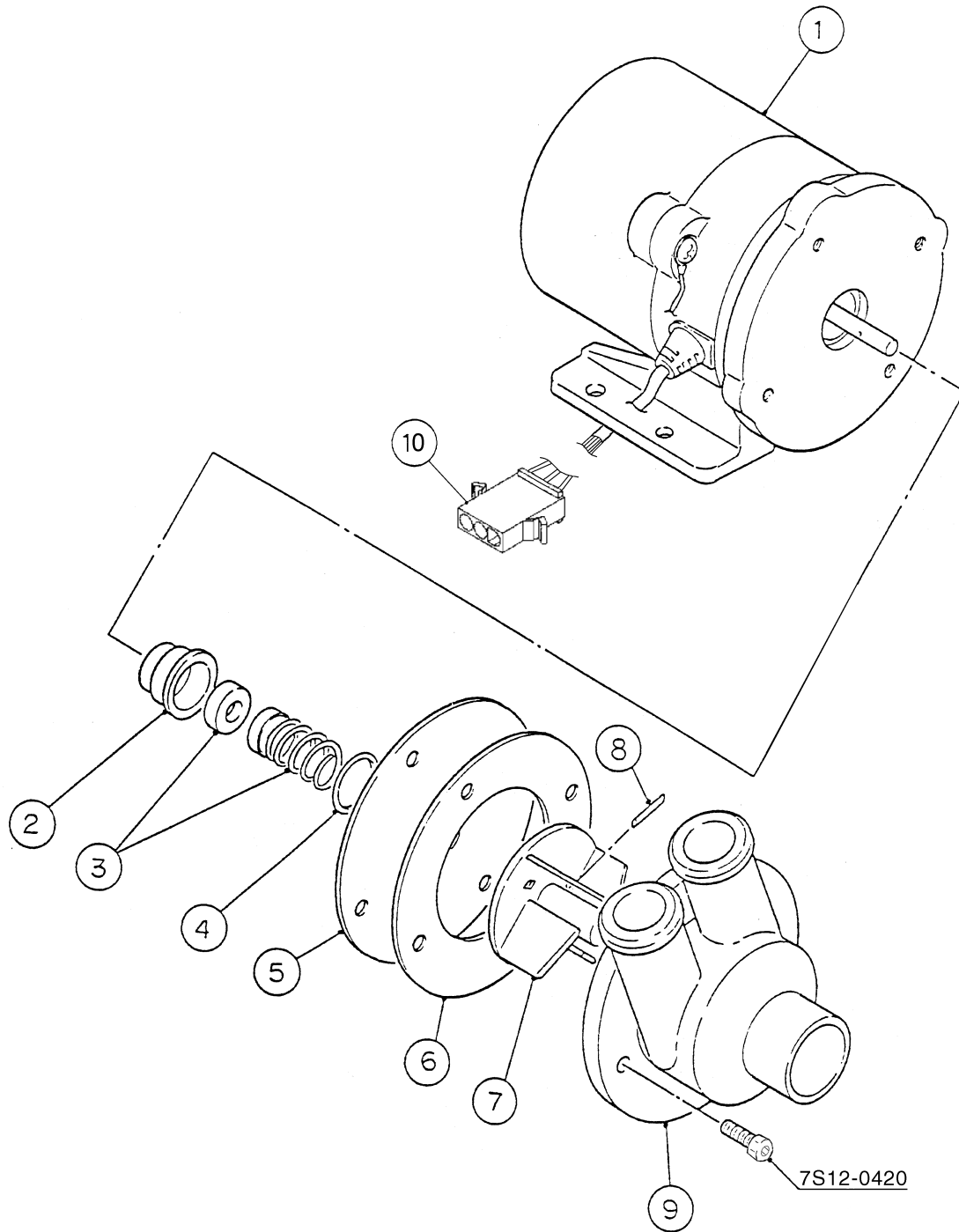
MODEL: KM-630MWH TITLE: E. LABEL LOCATION								
INDEX NO.	DESCRIPTION	MATERIAL OR MODEL NUMBER	PART NUMBER	REQUIRED NUMBER				
				L-0				
1	EMBLEM	PETP FILM	4A0560-01	1				
2	MODEL NUMBER LABEL	PETP FILM	4A2356-30	1				
3	LABEL – PENGUIN (R)	PETP FILM	4A0526-01	1				
4	MAINTENANCE LABEL	PVC FILM	326218-01	1				
5	CAUTION LABEL (H)	PVC FILM	439150-01	1				
6	WIRING LABEL	PVC FILM	3A1981-01	1				
7	RATING LABEL	PES FILM	4A2411-01	1				
8	NAMEPLATE	PES FILM	4A2403-01	1				
9	INSTRUCTION SHEET	PAPER	2A2143-01	1				
10	TAG WARNING: ELECTRICAL CONNECTION	PAPER	428430-01	1				
11	MANUAL LABEL	PVC FILM	4A2512-01	1				
12	OPERATION LABEL – VALVE	PVC FILM	439541-01	1				
13	LABEL – R404A	PES FILM	4A0960-01	1				
14	INSTRUCTION LABEL	PVC FILM	444575-01	1				
15	LABEL – CONTROL BOARD	PVC FILM	3A1272-01	1				
16	LABEL (B) CONTROL BOARD	-	4A2528-01	1				



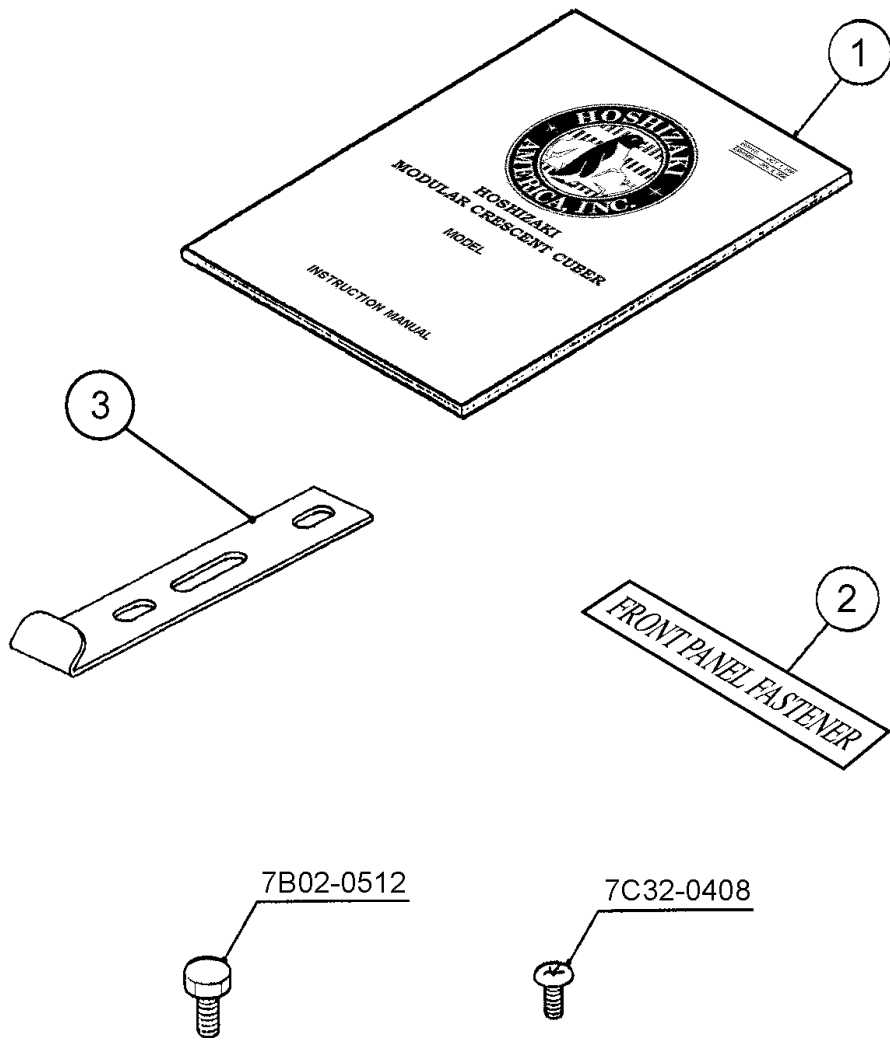
DETAIL B - CONT. BOX



MODEL: KM-630MRH TITLE: E. LABEL LOCATION								
INDEX NO.	DESCRIPTION	MATERIAL OR MODEL NUMBER	PART NUMBER	REQUIRED NUMBER				
				L-0				
1	EMBLEM	PETP FILM	4A0560-01	1				
2	MODEL NUMBER LABEL	PETP FILM	4A2356-31	1				
3	LABEL – PENGUIN (R)	PETP FILM	4A0526-01	1				
4	MAINTENANCE LABEL	PVC FILM	326218-01	1				
5	CAUTION LABEL (H)	PVC FILM	439150-01	1				
6	WIRING LABEL	PVC FILM	3A1990-01	1				
7	RATING LABEL	PES FILM	4A2412-01	1				
8	NAMEPLATE	PES FILM	4A2404-01	1				
9	INSTRUCTION SHEET	PAPER	2A2143-01	1				
10	TAG FAN MOTOR LEADS	PAPER	4A1494-01	1				
11	TAG WARNING: ELECTRICAL CONNECTION	PAPER	428430-01	1				
12	MANUAL LABEL	PVC FILM	4A2512-01	1				
13	LABEL – CHARGE	-	4A1399-07	1				
14	LABEL – 404A	PES FILM	4A0960-01	2				
15	LABEL – CONTROL BOARD	PVC FILM	3A1272-01	1				
16	OPERATION LABEL – VALVE	PVC FILM	439541-01	1				
17	CAUTION TAPE – R404A	L=250	4A1535L01	1				
18	INSTRUCTION LABEL	PVC FILM	444575-01	1				
19	CAUTION – REMOTE LABEL	PVC FILM	4A1491-01	1				
20	LABEL (B) CONTROL BOARD	-	4A2528-01	1				



MODEL: KM-630MAH, MWH, MRH TITLE: F. PUMP MOTOR ASSEMBLY								
INDEX NO.	DESCRIPTION	MATERIAL OR MODEL NUMBER	PART NUMBER	REQUIRED NUMBER				
				L-0				
1	PUMP MOTOR	AP-TA4(H) 120V	2U0095-01	1				
2	RETAINER	SS	418584-01	1				
3	MECHANICAL SEAL (B)	H5-PS9, 5	415817-01	1				
4	"O" RING	1AP18	7611-P018	1				
5	PLATE – PUMP	SS	403013-01	1				
6	PUMP GASKET	NR	403014-01	1				
7	IMPELLER	ABS	433522-01	1				
8	PIN	SS	414102-01	1				
9	PUMP HOUSING	ABS	211409-01	1				
	HEX SOCKET HEAD CAP SCREW	4X20, SS	7S12-0420	4				
10	PLUG HOUSING	-	412832-06	1				



HA

MODEL: KM-630MAH, MWH, MRH TITLE: G. ACCESSORIES								
INDEX NO.	DESCRIPTION	MATERIAL OR MODEL NUMBER	PART NUMBER	REQUIRED NUMBER				
				L-0				
1	INSTRUCTION MANUAL	PAPER	91A1KH10A	1				
2	LABEL – FASTENER	PAPER	427122-01	1				
3	UNIVERSAL BRACE	GS	4A0363-01	2				
	HEX HEAD BOLT	5X12, SS	7B02-0512	4				
	TRUSS HEAD SCREW	4X8, SS	7C32-0408	1				