



CE 89/336
73/23

NUMBER: 71216

ISSUED: March 31, 2003

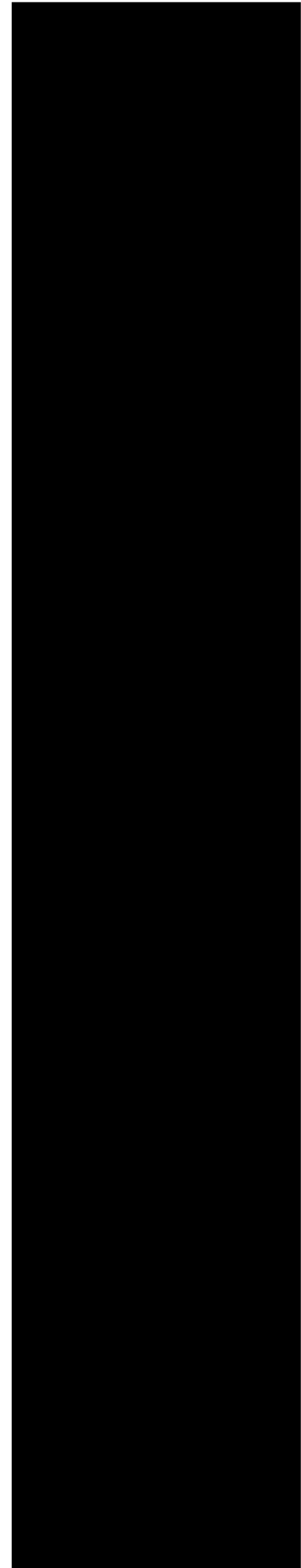
REVISED: December 6, 2004

MODULAR CRESCENT CUBER

KM-630MAH-E

PARTS LIST

HOSHIZAKI



CONTENTS

Auxiliary Codes	3
Material Abbreviations	4
A. Ice Cuber Assembly	5
B. Refrigeration Circuit	9
C. Water Circuit	13
D. Control Box Assembly	16
E. Label Location	19
F. Pump Motor Assembly	22
G. Accessories	24

Auxiliary Codes

KM-630MAH-E	L-0	July 2001
	M-1	February 2002
	M-2	June 2002
	N-0	February 2003
	N-1	April 2003
	P-0	December 2003
	P-1	June 2004

IMPORTANT

IEC standards require that the clamping means of earthing terminals be adequately secured against accidental loosening and that accessible metal parts of the icemaker which may become live in the event of an insulation fault be permanently and reliably connected to an earthing terminal within the icemaker or to the earthing contact of the icemaker inlet.

This is accomplished in this icemaker through the use of stainless steel toothed washers, Hoshizaki Part # 7R22-0400.

Material Abbreviations

Aluminum

AL = Aluminum

Copper

CU = Copper

Plastic

ABS = Acrylonitrile -butadiene - styrene
 AC = Polyacetal
 EVA = Ethylene vinyl acetate
 PA = Polyamide = Nylon
 PC = Polycarbonate
 PE = Polyethylene
 PES = Polyester
 PETP = Polyethylene terephthalate = Tetlon
 PP = Polypropylene
 PS = Polystyrene
 PTFE = Polytetrafluoroethylene = Teflon
 PUR = Polyurethane
 PVC = Polyvinyl chloride

Rubber

VN = Vinyl Nitrile
 EPDM = EP rubber
 NBR = Nitrile butadiene rubber
 NR = Natural rubber
 NP = Neoprene
 SI.R = Silicone rubber
 SY.R = Synthetic rubber
 EPH = Epichlorohydrin

Steel

GS = Galvanized steel
 SS = Stainless steel
 PS = Plated steel
 PAS = Primed steel

Auxiliary Code

K-0

┌┐ Designates the year. "K" indicates the year 2000. Years progress or regress in alphabetical order.
 └┘ "J" is 1999, "L" is 2001, "M" is 2002, and so on. The letters "I" and "O" were skipped.
 ┌┐ Designates significant part changes within the same year. Base is 0 and this number advances for
 └┘ each change.

Example: P-1

┌┐ "P" indicates 2004.
 └┘ "1" indicates the first significant part change for 2004.

Marks Located Under the Auxiliary Code

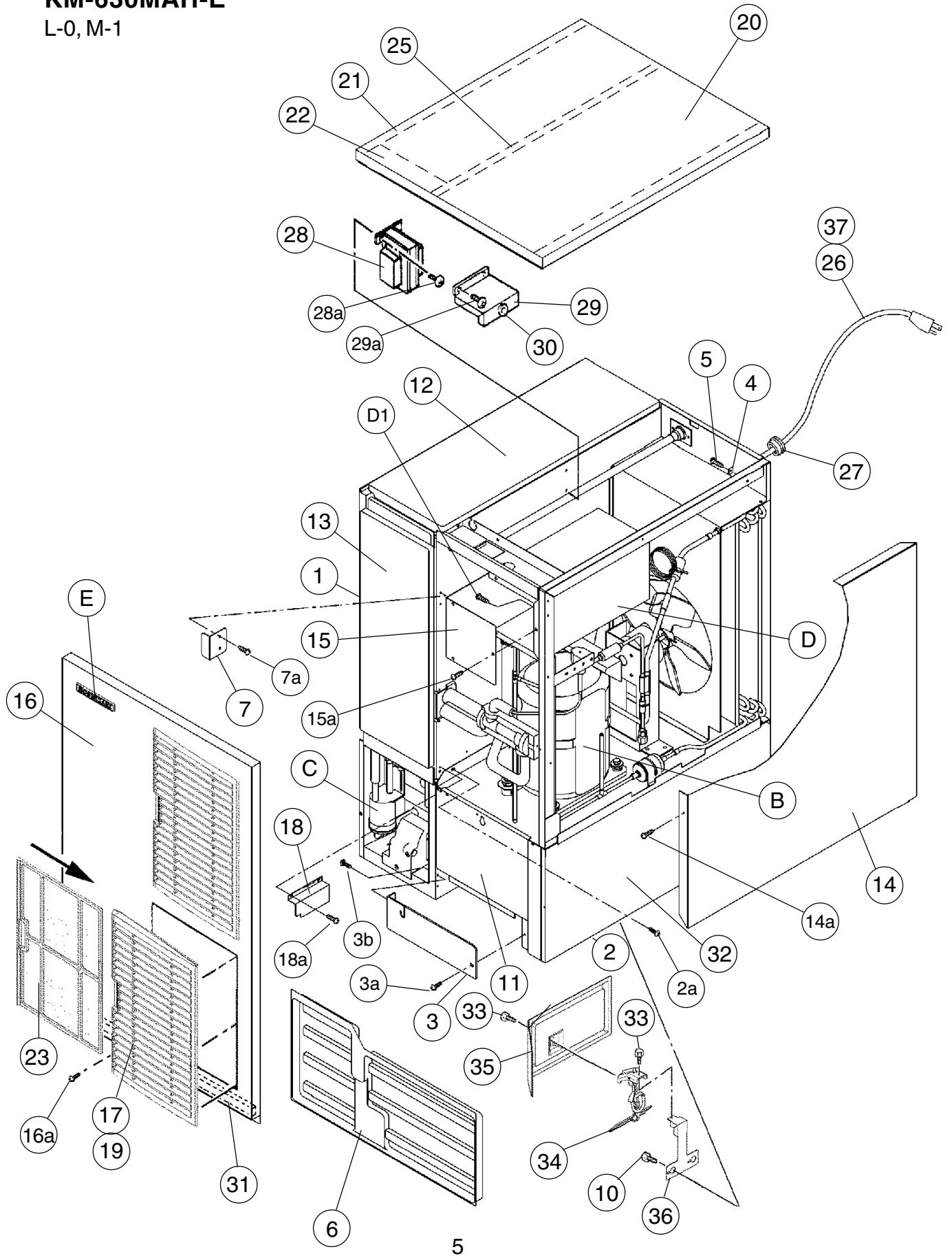
- = Part deleted.
- x = Part deleted and replaced by "o" part.
- o = New part in place of "x" part.

HA

A. Ice Cuber Assembly

KM-630MAH-E

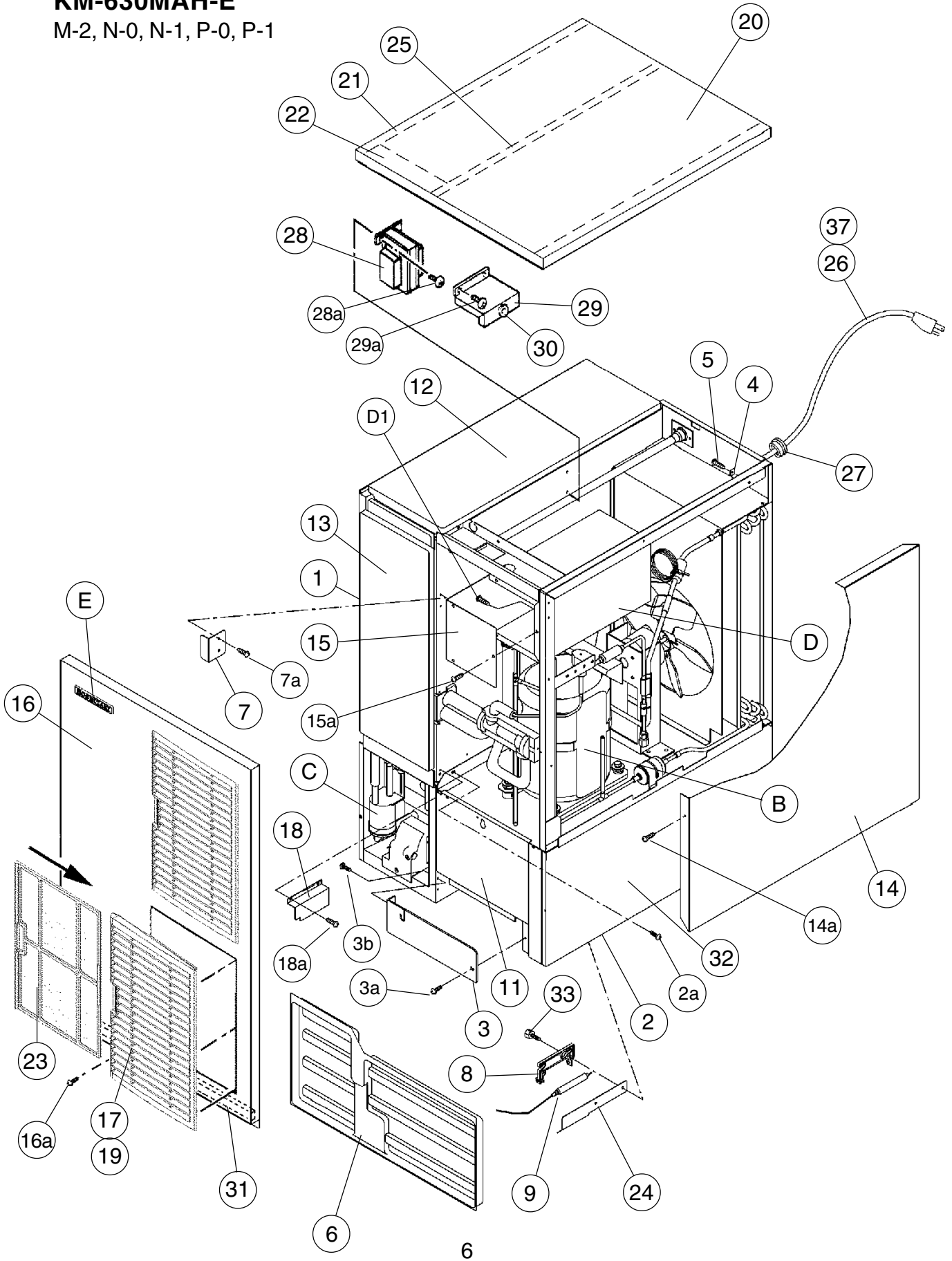
L-0, M-1



HA

A. Ice Cuber Assembly KM-630MAH-E

M-2, N-0, N-1, P-0, P-1



Title: A. Ice Cuber Assembly Model: KM-630MAH-E									
Index No.	Description	Material or Model Number	Part Number	Required Number					
				L-0	M-1	M-2 N-0 N-1 P-0 P-1			
B	REFRIGERATION CIRCUIT	-	1A0580A02	1	x1				
		-	1A0580A04		o1	1			
C	WATER CIRCUIT		2A0971A01	1	1	1			
D	CONTROL BOX ASSEMBLY	-	2A2334A01	1	1	-			
		-	2A2548A01			1			
D1	T2 SCREW / WASHER ASSY	4X8	7P3120408	3	3	3			
E	LABEL LOCATION	-	3A2104A01	1	1	-			
		-	3A2434A01			1			
1	EVAP. CASE	-	1A0579G04	1	1	1			
2	BASE	-	2A2146G01	1	1	1			
2a	FT SCREW	4X8	7F31-0408	7	7	7			
3	FRAME	ABS	3A0217G01	1	1	-			
		-	3A2503G01			1			
3a	TRUSS HEAD SCREW	4X8, SS	7C32-0408	1	1	1			
3b	TRUSS HEAD SCREW	4X25, SS	7C32-0425	2	2	2			
4	SQUARE WASHER	BRASS	433537-02	1	1	1			
5	SCREW - GROUNDING	BRASS	433304-02	1	1	1			
6	FRONT COVER	P.S	2A0182-01	1	1	1			
7	BARRIER-INSULATION	GS	4A1167-01	1	1	1			
7a	T2 SCREW / WASHER ASSY	4X8	7P3120408	2	2	2			
8	BULB HOLDER	PE	328919-01			1			
9	SPACER	PE	443545-01			2			
10	THUMBSCREW	SS, ABS	415949G09	2	2	-			
11	BASE COVER	SS	321525G01	1	1	1			
12	TOP INSULATION	PP	215730G01	1	1	1			
13	FRONT INSULATION	PP	215731G02	1	1	1			
14	SIDE PANEL (R)	SS	2A2117G02	1	1	1			
14a	T2 SCREW	4X8, SS	7P32-0408	1	1	1			
	TOOTH WASHER	M4, SS	7R22-0400	1	1	1			
15	CONTROL BOX COVER	GS	3A1828-01	1	1	-			
		GS	3A2371-01			1			
15a	T2 SCREW / WASHER ASSY	4X8	7P3120408	3	3	3			
16	FRONT PANEL	SS	2A2243G01	1	1	1			
16a	TRUSS HEAD SCREW	4X8, SS	7C32-0408	1	1	1			
	TOOTH WASHER	M4, SS	7R22-0400	1	1	1			
17	LOUVER (A)	ABS	1A0547-01	2	2	2			
18	BARRIER	GS	4A0352-01	1	1	1			
18a	T2 SCREW / WASHER ASSY	4X8	7P3120408	2	2	2			
19	PUSH RETAINER	-	4A2414-01	6	6	6			
20	TOP PANEL	SS (3A1890A01)	2A2133-01	1	1	1			
21	GASKET	PVC (3A1890A01)	427014-04	2	2	2			
22	INSULATION	PE FOAM (3A1890A01)	438012-01	1	1	1			
23	AIR FILTER (A)	ABS	2A2062G01	2	2	2			
24	DEFLECTOR	SS	4A1951-01			1			
25	GASKET (A)		324859-03	1	1	1			

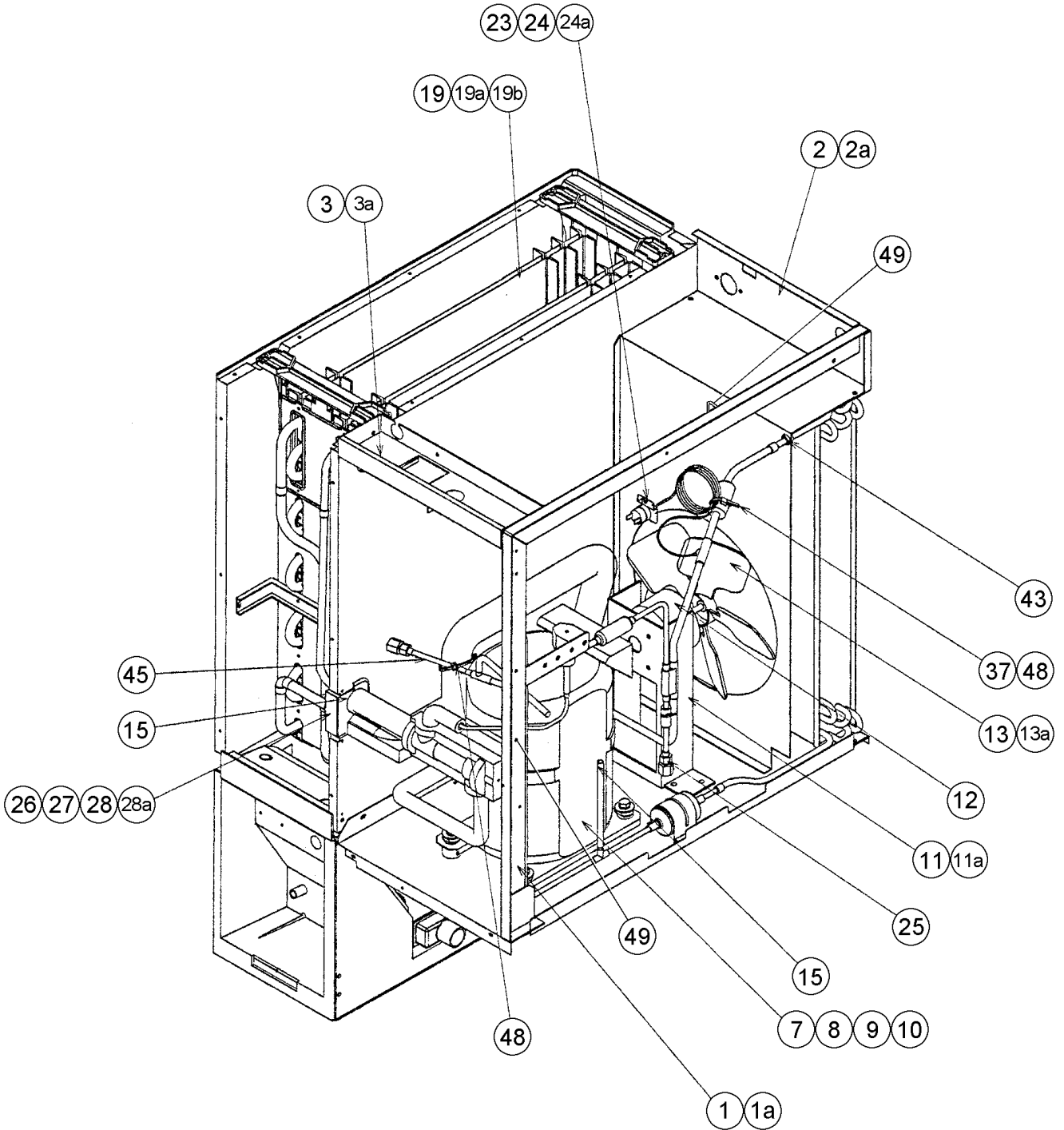
HA

Title: A. Ice Cuber Assembly Model: KM-630MAH-E										
Index No.	Description	Material or Model Number	Part Number	Required Number						
				L-0	M-1	M-2 N-0 N-1 P-0 P-1				
26	POWER SUPPLY CORD	-	452359-02	1	1	1				
27	BUSHING	CEE SR-6P30	450414-01	1	1	1				
28	TRANSFORMER	PY12-19204	446202-01	1	1	1				
28a	PAN HEAD SCREW W/ WASHER (LF)	4X8	7C1230408	4	4	4				
29	TRANS COVER	GS	446359-01	1	1	1				
29a	T2 SCREW / WASHER ASSY	4X8	7P3120408	2	2	2				
30	BUSHING	OCB-500	428394-02	1	1	1				
31	GASKET	L=554	4A0808L02	1	1	1				
32	SIDE PANEL (R) BASE	SS	2A2147-01	1	1	1				
33	THUMBSCREW	-	415949G04	2	2	-				
			415949G09			2				
34	BIN SWITCH	-	4A2430-01	1	1	-				
35	SHIELD	-	3A1438-01	1	1	-				
36	BRACKET (M)	-	3A1434-01	1	1	-				
37	CABLE TIE MOUNT	-	437618-01			1				

HA

B. Refrigeration Circuit KM-630MAH-E (1/2)

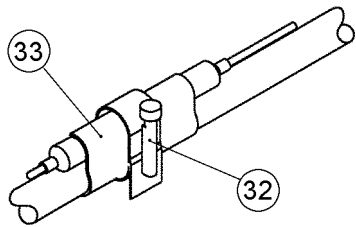
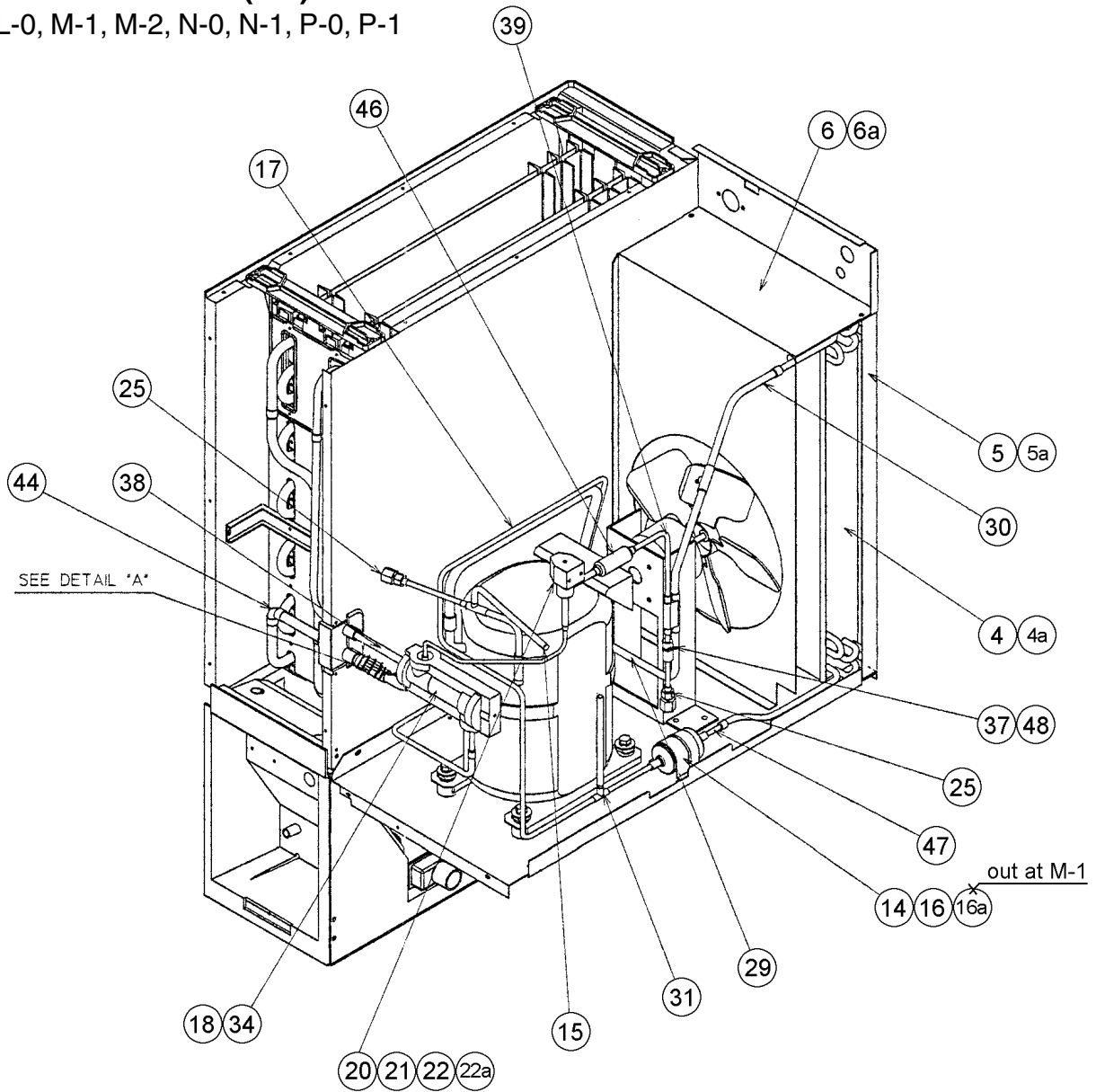
L-0, M-1, M-2, N-0, N-1, P-0, P-1



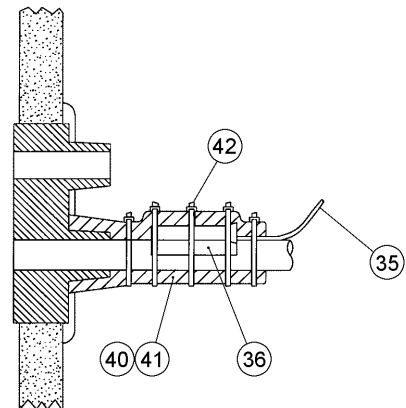
HA

B. Refrigeration Circuit KM-630MAH-E (2/2)

L-0, M-1, M-2, N-0, N-1, P-0, P-1



DETAILED HOLDER/EXPANSION VALVE



DETAIL "A" THERMISTOR ATTACHMENT

Title: B. Refrigeration Circuit Model: KM-630MAH-E												
Index No.	Description	Material or Model Number	Part Number	Required Number								
				L-0	M-1 M-2 N-0 N-1 P-0	P-1						
1	SIDE FRAME	GS	2A1301G03	1	1	1						
1a	T2 SCREW / WASHER ASSY	4X8	7P3120408	4	4	4						
2	REAR PANEL	GS	3A1302G01	1	1	1						
2a	T2 SCREW / WASHER ASSY	4X8	7P3120408	3	3	3						
3	TOP FRAME	GS	3A1893-01	1	1	1						
3a	T2 SCREW / WASHER ASSY	4X8	7P3120408	2	2	2						
4	CONDENSER	-	218912-01	1	1	1						
4a	T2 SCREW / WASHER ASSY	4X8	7P3120408	2	2	2						
5	BARRIER	GS	433693-02	1	1	1						
5a	T2 SCREW / WASHER ASSY	4X8	7P3120408	2	2	2						
6	SHROUD	GS	2A1325-01	1	1	1						
6a	T2 SCREW / WASHER ASSY	4X8	7P3120408	2	2	2						
7	COMPRESSOR	RS64C IE-IAZ-219	4A2301-01	1	1	1						
8	BOLT	8X45	437889-01	4	4	4						
9	SPACER	-	434404-01	4	4	4						
10	GROMMET	527-0039-04	434403-01	4	4	4						
11	FAN MOTOR BRACKET	GS	327180-01	1	1	1						
11a	HEX HEAD BOLT W/WASHER (LF)	5X12	7B0230512	4	4	4						
12	FAN MOTOR	U90B1790-1031 5KPM84DFK48AS	440911-01 4A3158-01	1 1	1 1	- 1						
13	FAN BLADE	AD10CW32	444898-01	1	1	1						
13a	SELF LOCKING NUT NO. 8-32	-	7N2110832	4	4	4						
14	DRIER	CW-0325-S -	4A1413-01 4A2666-01	1	x1 o1	1						
15	ENDCAPS	-	4A1413F01	2	2	2						
16	DRIER BRACKET	GS	4A0807-01	1	-							
	NYLON TIE	-	8911-0301		1	1						
16a	T2 SCREW	4X8	7P31-0408	2	-	-						
17	HEAT EXCHANGER	-	2A1586G01	1	1	1						
18	EXP. VALVE	HFE-10NHDU-3	4A1684-01	1	1	1						
19	EVAPORATOR	-	106396G01	1	1	1						
19a	T2 SCREW	4X16, SS	7P31-0416	4	4	4						
19b	T2 SCREW	4X12, SS	7P32-0412	2	2	2						
20	VALVE BODY	70	440352-01	1	1	1						
21	COIL-VALVE	ABS-25-1-HD-2	440353-01	1	1	1						
22	BOLT		440353F01	1	1	1						
22a	TRUSS HEAD SCREW	4X8	7C31-0408	2	2	2						
23	PRESSURE SWITCH	ACB-1UB09	433441-07	1	1	1						
24	PRESS. SWITCH BRACKET	GS	434938-01	1	1	1						
24a	T2 SCREW / WASHER ASSY	4X8	7P3120408	1	1	1						
25	ACCESS VALVE	TCJ-2F20NHDU-1	457729-01	2	2	2						

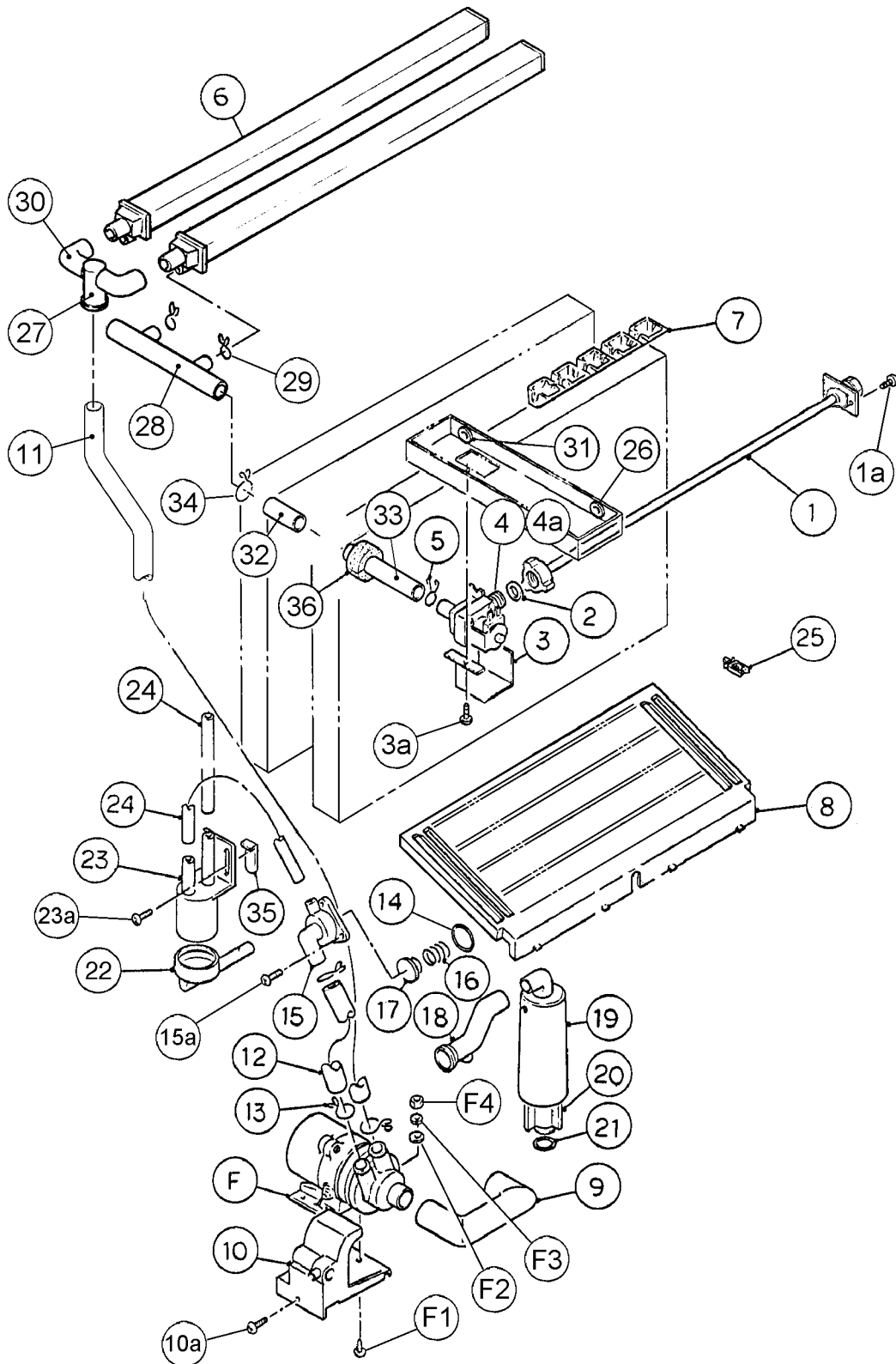
Title: B. Refrigeration Circuit Model: KM-630MAH-E											
Index No.	Description	Material or Model Number	Part Number	Required Number							
				L-0	M-1 M-2 N-0 N-1 P-0	P-1					
26	RUBBER TUBE (A)	EPDM	3A1044-01	1	1	1					
27	RUBBER TUBE (B)	EPDM	3A1045-01	1	1	1					
28	INSULATION HOLDER	SS	4A1550-01	1	1	1					
28a	T2 SCREW	4X8, SS	7P32-0408	2	2	2					
29	COPPER TUBE (A) – HIGH SIDE	COPPER	3A1157G02	1	1	1					
30	COPPER TUBE (B) – HIGH SIDE	COPPER	4A1782G01	1	1	1					
31	COPPER TUBE (E) – HIGH SIDE	COPPER	3A1213G01	1	-						
		COPPER	3A1213G03		1	1					
32	CLAMP	SS	443461-02	1	1	1					
33	HOLDER/EXP. VALVE – 3/8	SS	3A0107-01	1	1	1					
34	EXP. VALVE COVER	PE FOAM	3A0944-01	1	1	1					
35	THERMISTOR	-	429006-03	1	1	1					
36	HOLDER-THERMISTOR	COPPER	427430-01	1	1	1					
37	INSULATION TUBE	L=40	7762-1020	2	2	2					
38	COPPER TUBE – LOW SIDE	COPPER	3A1193G01	1	1	1					
39	COPPER TUBE (A) – HOT GAS	COPPER	4A1755-01	1	1	1					
40	INSULATION THERMISTOR (A)	PE FOAM	439368-01	1	1	1					
41	INSULATION THERMISTOR (B)	PE FOAM	439368-02	1	1	1					
42	CABLE TIE	CV-200	7920-0010	3	3	3					
43	BUSHING	OCB-625	428394-03	1	1	1					
44	ELBOW	COPPER	417395-03	1	1	1					
45	COPPER TUBE – ACCESS VALVE	COPPER	4A2025G01	1	1	1					
46	STRAINER	PARKER	441569-02	1	1	1					
47	COPPER TUBE (F) – HIGH SIDE	COPPER	4A1108-01	1	1	1					
48	CABLE TIE	CV-150	7920-0003	4	4	4					
49	CLAMP	-	4A2338-01	2	2	2					

HA

C. Water Circuit

KM-630MAH-E

L-0, M-1, M-2, N-0, N-1, P-0, P-1



Title: C. Water Circuit Model: KM-630MAH-E										
Index No.	Description	Material or Model Number	Part Number	Required Number						
				L-0	M-1 M-2	N-0 N-1 P-0 P-1				
F	PUMP MOTOR ASSEMBLY	HS-0102	321444A04	1	1	1				
F1	TRUSS HEAD SCREW	4X16, SS	7C32-0416	1	1	1				
F2	FLAT WASHER	M4, SS	7W22-0400	1	1	1				
F3	SPLIT LOCK WASHER	M4, SS	7L22-0400	1	1	1				
F4	HEX NUT	M4, SS	7N12-0400	1	1	1				
1	WATER SUPPLY PIPE	COPPER	4A0768G06	1	1	1				
1a	T2 SCREW	4X8	7P31-0408	2	2	2				
2	RUBBER GASKET	NR	413854-03	1	1	1				
3	WATER VALVE BRACKET	GS	3A0736-01	1	1	1				
3a	T2 SCREW	4X8	7P31-0408	1	1	1				
4	WATER VALVE	V-19	4A1176-01	1	1	1				
4a	TRUSS HEAD SCREW	4X8	7C32-0408	2	2	2				
5	HOSE CLAMP	SS, 18MM	427443-05	1	1	1				
6	SPRAY TUBE	PE	433520G01	2	2	2				
7	SPRAY GUIDE (A)	PE	208586-01	6	6	6				
8	CUBE GUIDE	ABS	212088-01	1	1	1				
9	SUCTION HOSE	EPDM	433466-01	1	1	1				
10	PUMP MOTOR BRACKET	PC	211408-01	1	1	1				
10a	FLAT HEAD SCREW	4X12, SS	7F32-0412	1	1	1				
11	VINYL HOSE	L=785	7716-2025	1	1	1				
12	VINYL HOSE	L=110	7716-2025	1	1	1				
13	HOSE CLAMP	SS, 25MM	427443-03	6	6	6				
14	"O" RING	1AG35	7611-G035	1	1	1				
15	VALVE HOUSING - DRAIN	ABS	321001-01	1	1	1				
15a	T2 SCREW	4X10, SS	7P32-0410	3	3	3				
16	SPRING	SS	3A0875-01	1	1	1				
17	VALVE SHEET	EPDM	433705-01	1	1	1				
18	DRAIN HOSE	SANTOPREN E	433468-01	1	1	1				
19	OVERFLOW CAP	PE	321002-01	1	1	1				
20	OVERFLOW PIPE	ABS	430722-01	1	1	1				
21	"O" RING	EPDM	4A1234-01	1	1	1				
22	CONNECTOR – FLOAT SWITCH	EPDM -	3A1325-01 426799-01	1	1	x1 o1				
23	FLOAT SWITCH	163795	4A0886-01	1	1	1				
23a	T2 SCREW	4X12, SS	7P32-0412	2	2	2				
24	SILICONE HOSE	L=140	773013812	2	2	2				
25	WIRE SADDLE	VWS4238-C	4A0338-02	4	4	4				
26	BUSHING	OCB-500	428394-02	1	1	1				
27	DISTRIBUTOR	EPDM	432820-01	1	1	1				
28	DISTRIBUTOR HOSE		439374-01	1	1	1				
29	HOSE CLAMP	SS, 13.5 MM	427443-07	2	2	2				
30	ELBOW		433467-01	2	2	2				

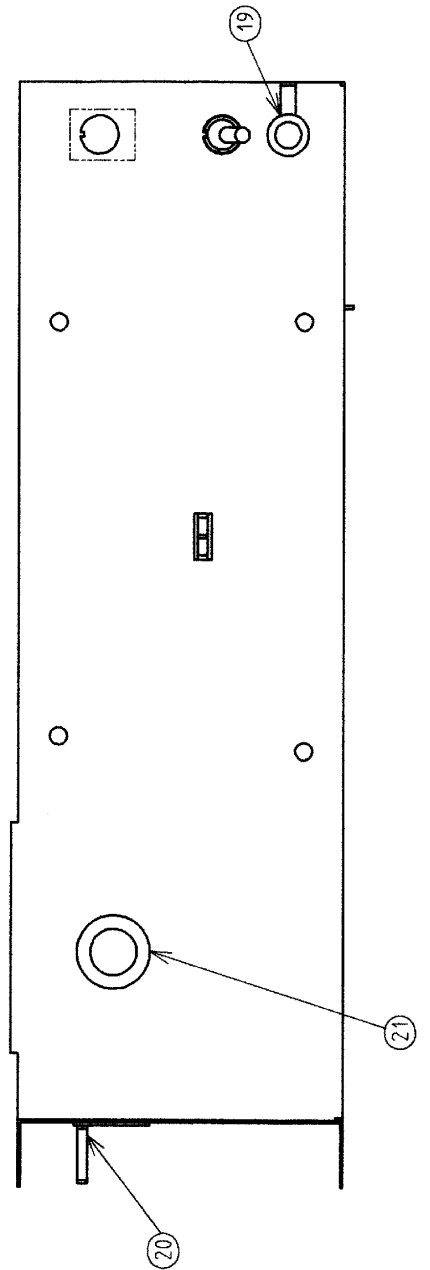
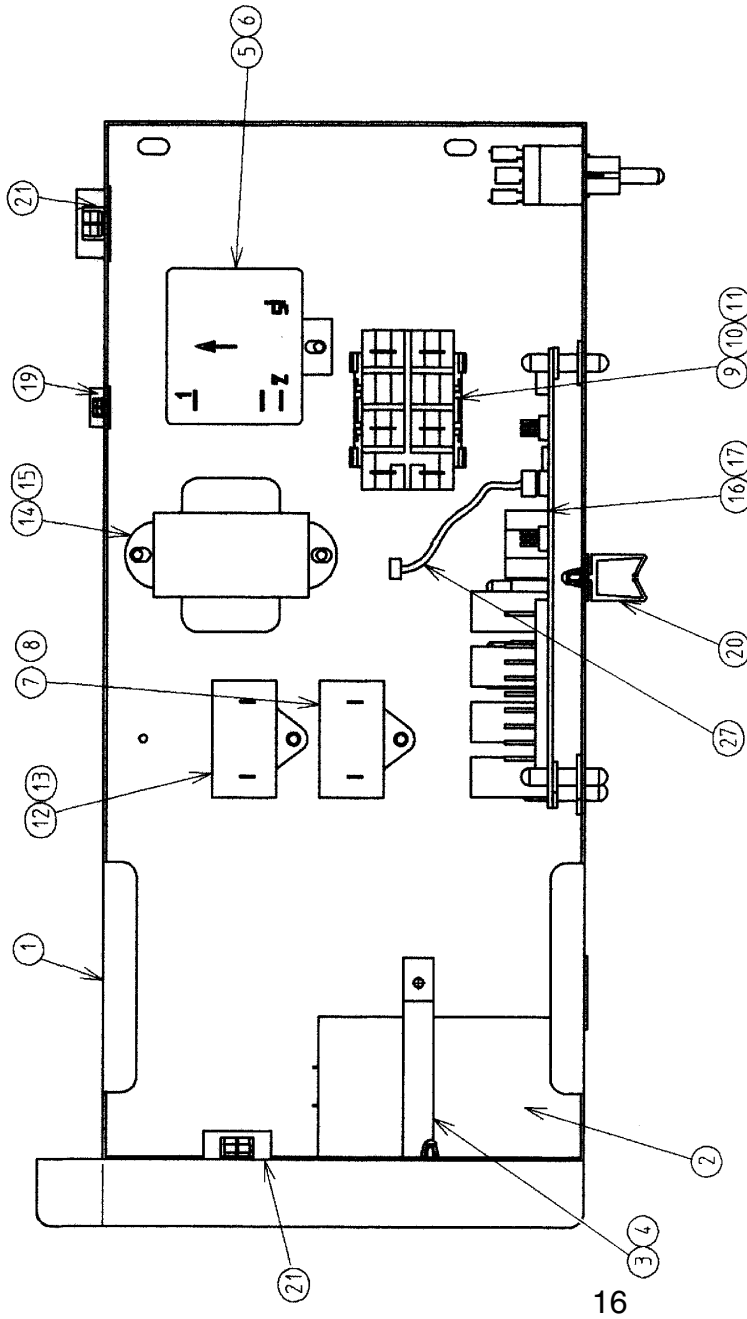
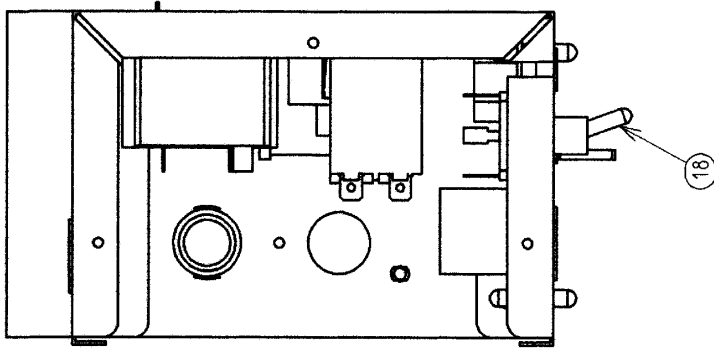
HA

Title: C. Water Circuit Model: KM-630MAH-E										
Index No.	Description	Material or Model Number	Part Number	Required Number						
				L-0	M-1 M-2	N-0 N-1 P-0 P-1				
31	BUSHING	OCB-750	428394-01	2	2	2				
32	JOINT PIPE	ABS	439329-01	1	1	1				
33	CONNECTING PIPE	DYNAFLEX	4A1142-02	1	1	1				
34	HOSE CLAMP	SS, 20 MM	427443-06	1	1	1				
35	FLOAT SWITCH STOP	SS	446358-01	1	1	1				
36	INSULATION (E)	PE FOAM	4A0392-01	1	1	1				

HA

D. Control Box Assembly KM-630MAH-E

L-0, M-1

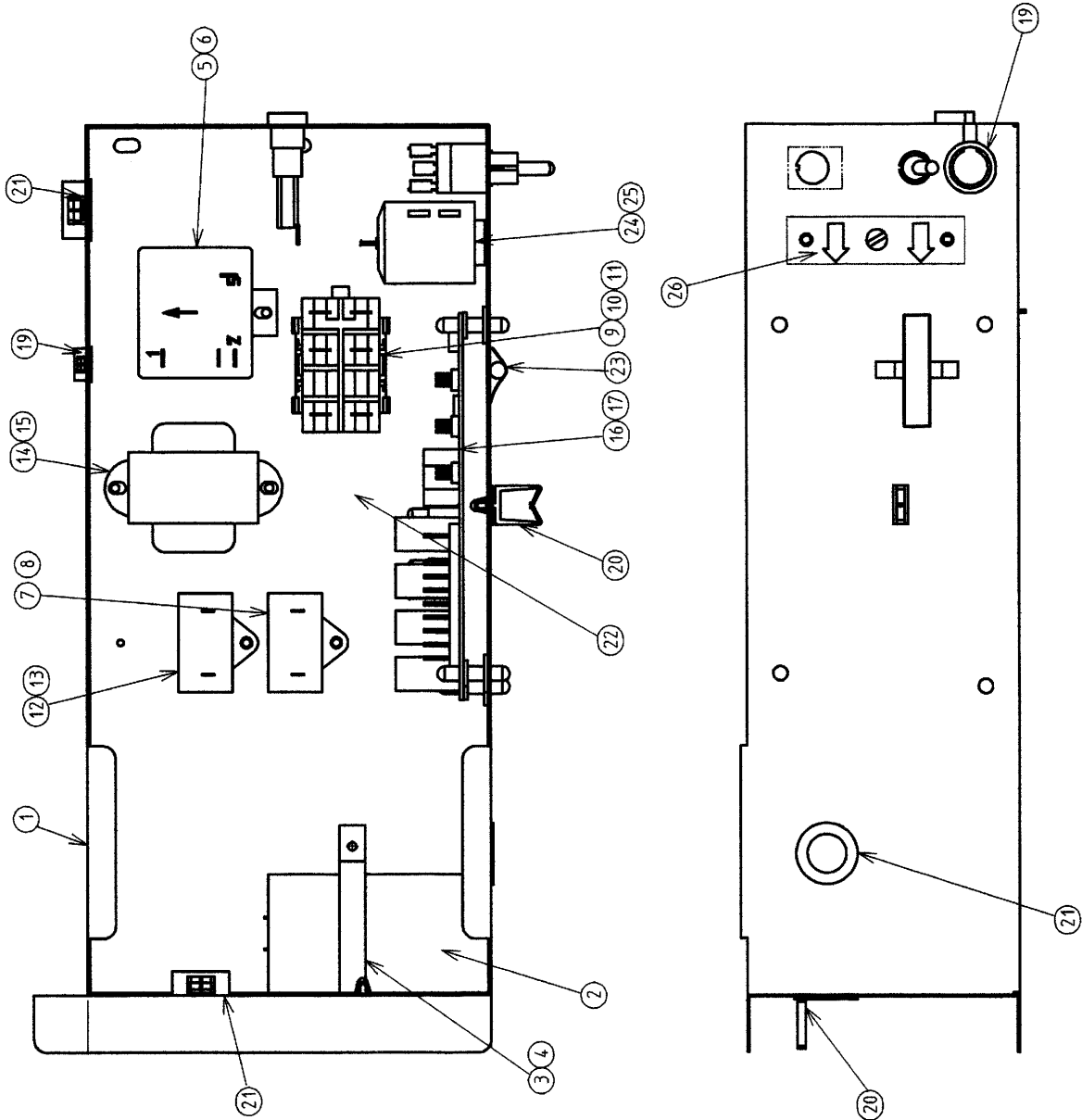
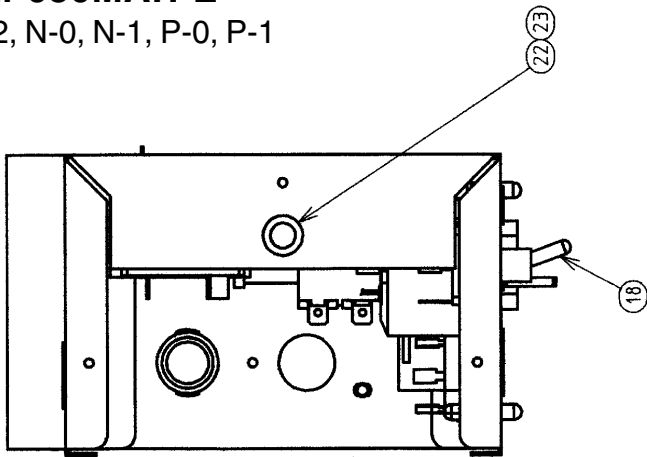


HA

D. Control Box Assembly

KM-630MAH-E

M-2, N-0, N-1, P-0, P-1



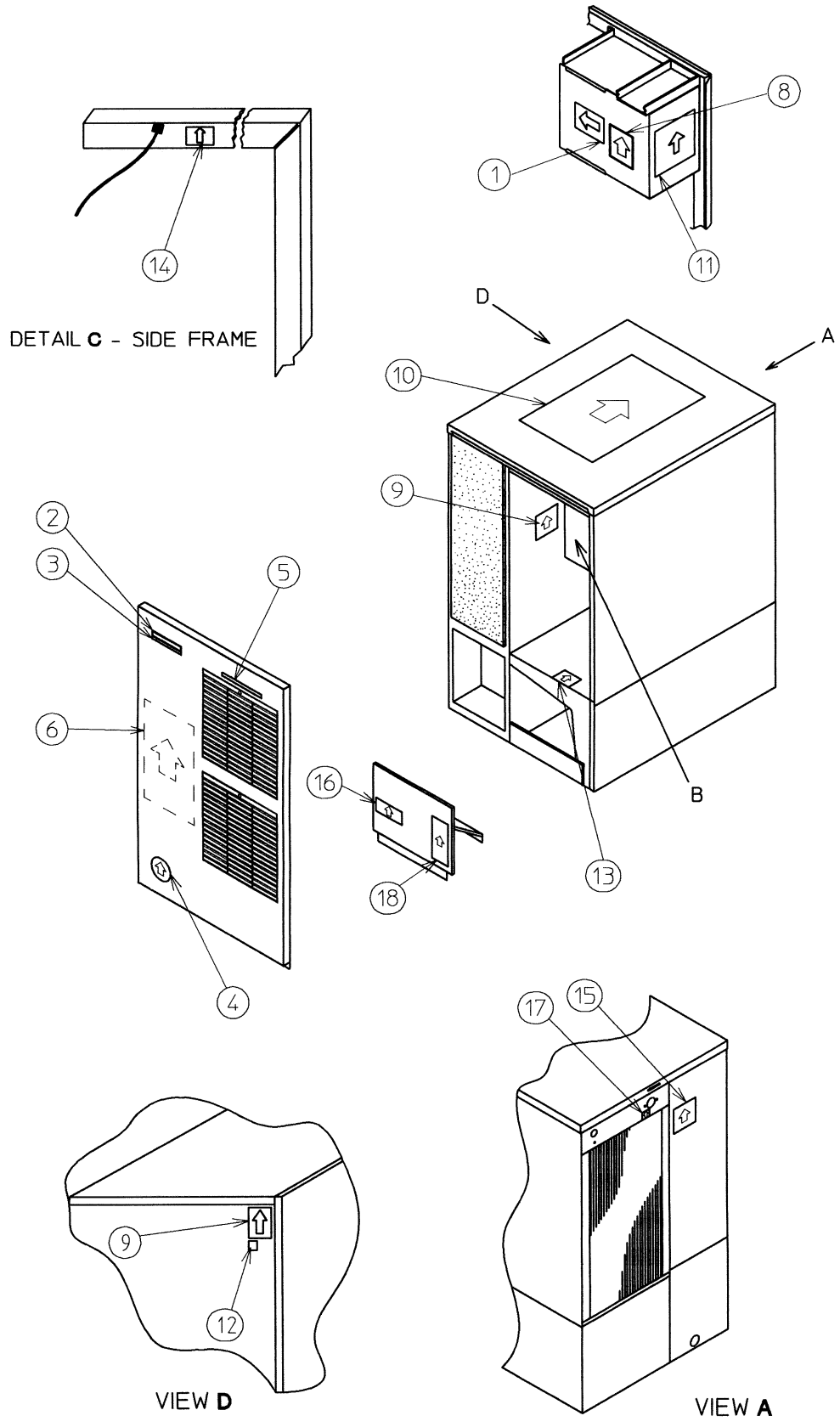
HA

Title: D. Control Box Assembly Model: KM-630MAH-E											
Index No.	Description	Material or Model Number	Part Number	Required Number							
				L-0 M-1	M-2 N-0 N-1 P-0 P-1						
1	CONTROL BOX	-	31989G01	1	1						
2	CAPACITOR-STARTING	88-108 MFD 250V	3A0076-03	1	1						
3	STRAP	GS	42262-01	1	1						
4	T2 SCREW	4X8	7P31-0408	1	1						
5	STARTER	-	4A1107-10	1	1						
6	T2 SCREW	4X8	7P31-0408	1	1						
7	CAPACITOR	-	4A2128-05	1	1						
8	T2 SCREW	4X10	7P31-0410	1	1						
9	MAGNETIC CONTACTOR	VC-20	428393-01	1	1						
10	BRACKET	-	428393F01	1	1						
11	T2 SCREW	4X8	7P31-0408	2	2						
12	CAPACITOR	-	4A2128-03	1	1						
13	T2 SCREW	4X10	7P31-0410	1	1						
14	TRANSFORMER	26D285H	3A0172-01	1	1						
15	T2 SCREW	4X8	7P31-0408	2	2						
16	CONTROLLER BOARD	HOS-001A	2A1410-01	1	1						
17	BOARD SUPPORT	CBLS37-M	4A0336-03	4	4						
18	TOGGLE SWITCH	-	4A2436-01	1	1						
19	BUSHING	OCB-500	428394-02	2	2						
20	WIRE SADDLE	VWS4238-C	4A0338-02	2	2						
21	BUSHING	OCB-875	428394-04	3	3						
22	FUSE HOLDER	-	4A0892-01		1						
23	FUSE	-	4A0893-07		2						
24	THERMOSTAT	-	4A2879-01		1						
25	TRUSS HEAD SCREW	4X8	7C31-0408		2						
	TOOTH WASHER	M4, Zinc	7R21-0400		2						
26	CONTROL LABEL	-	4A1758-01		1						
27	RESISTOR WIRE HARNESS	-	4A2200G01	1	-						

HA

E. Label Location
KM-630MAH-E
L-0, M-1

DETAIL B - CONT. BOX



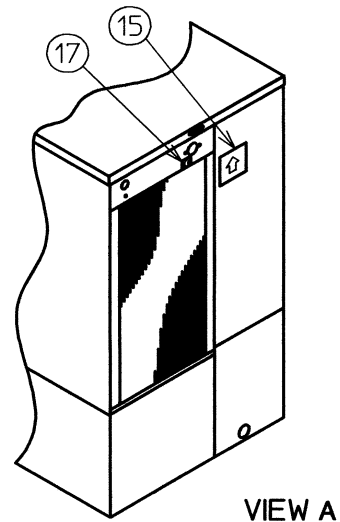
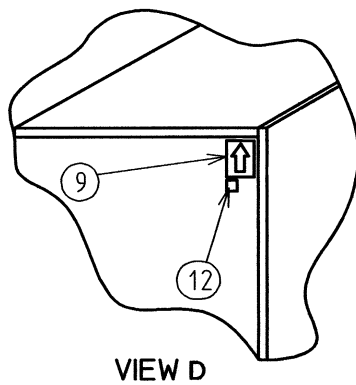
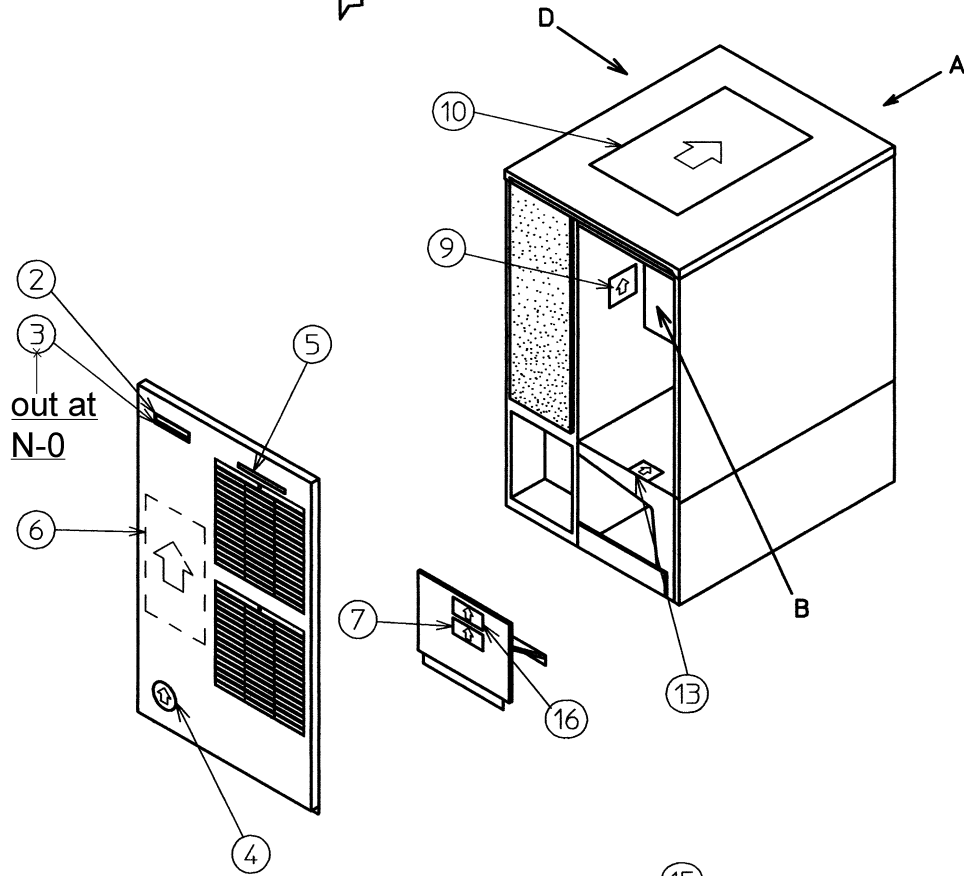
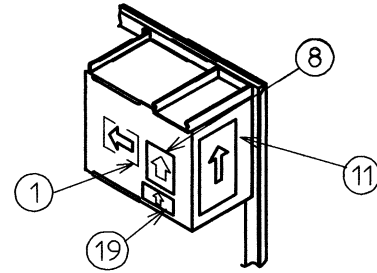
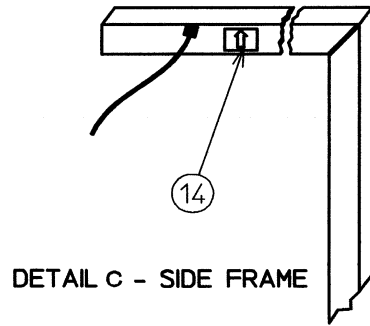
HA

E. Label Location

KM-630MAH-E

M-2, N-0, N-1, P-0, P-1

DETAIL B - CONT. BOX

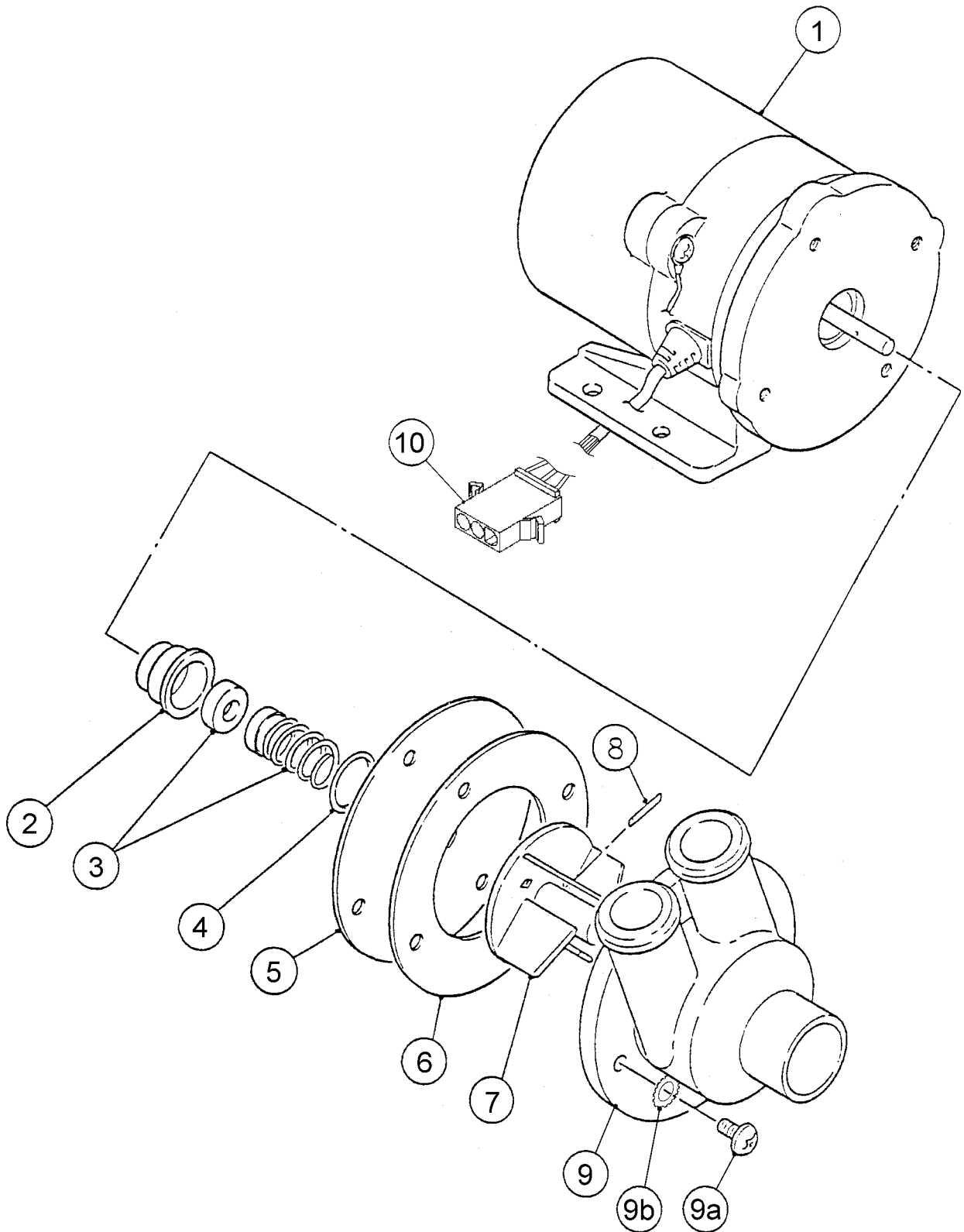


Title: E. Label Location Model: KM-630MAH-E										
Index No.	Description	Material or Model Number	Part Number	Required Number						
				L-0 M-1	M-2	N-0 N-1 P-0 P-1				
1	LABEL – CONTROL BOARD	PVC FILM	32220-01	1	1	1				
2	EMBLEM	PETP FILM	4A0560-01	1	1	1				
3	MODEL NUMBER LABEL	PETP FILM	4A2356-40	1	1	-				
4	LABEL – PENGUIN – (R)	PETP FILM	4A0526-01	1	1	1				
5	LABEL – AIR FILTER	PETP FILM	426177-01	1	1	1				
6	MAINTENANCE LABEL	PVC FILM	3A0725-01	1	1	1				
7	CAUTION LABEL (H)	PVC FILM	439148-01	x1						
	CAUTION LABEL (K)	PVC FILM	439150-01	o1	1	1				
8	WIRING LABEL	PVC FILM	3A2021-01	1	-					
		PVC FILM	3A2440-01		1	1				
9	NAMEPLATE	PES FILM	4A2606-01	2	2	x2				
		-	2A2654-04			o2				
10	INSTRUCTION SHEET	PAPER	2A2143-01	1	1	1				
11	MANUAL LABEL	PVC FILM	4A2512-01	1	-					
		PVC FILM	4A2864-01		1	1				
12	LABEL – CE	PES FILM	450668-01	1	1	1				
13	LABEL – R404A	PES FILM	4A0960-01	1	1	1				
14	LABEL – GROUNDING (B)	PES FILM	450452-02	1	1	1				
15	INSTRUCTION LABEL	PVC FILM	4A1235-01	1	x1					
		PVC FILM	444575-01		o1	1				
16	CAUTION LABEL (F)	PVC FILM	439146-01	1	1	1				
17	WATER SUPPLY LABEL	-	4A1158-01	1	1	1				
18	LABEL – BIN CONTROL	-	4A2692-01	1	-					
19	LABEL – FUSE	-	4A2817-01		1	1				

HA

F. Pump Motor Assembly KM-630MAH-E

L-0, M-1, M-2, N-0, N-1, P-0, P-1



HA

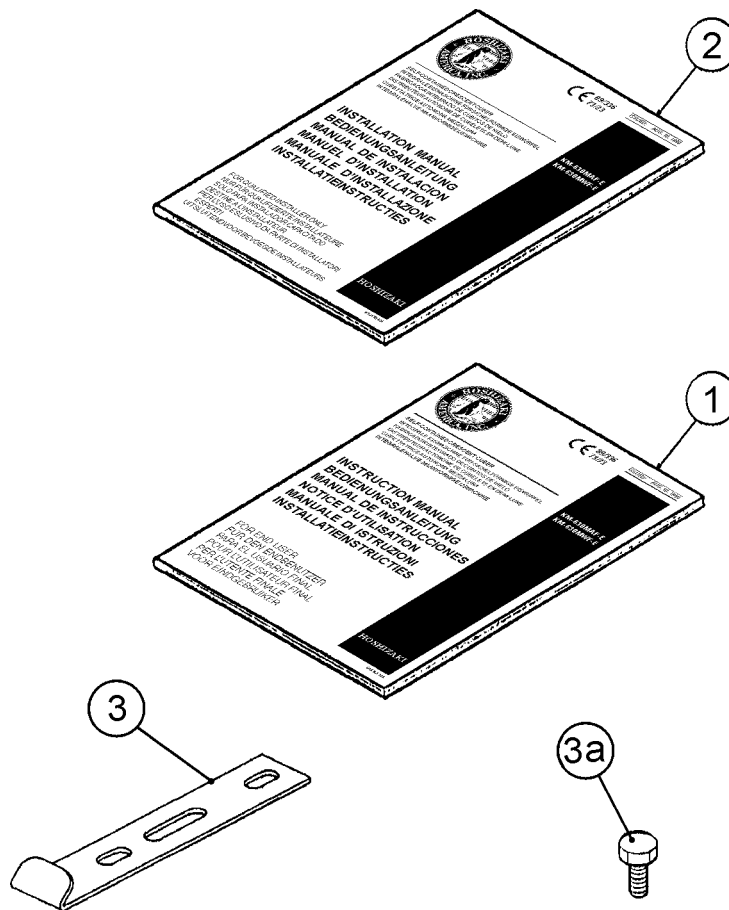
Title: F. Pump Motor Assembly Model: KM-630MAH-E											
Index No.	Description	Material or Model Number	Part Number	Required Number							
				L-0 M-1	M-2 N-0 N-1 P-0	P-1					
1	PUMP MOTOR	AP-TA4(H) 120V	2U0095-01	1	1	1					
2	RETAINER	SS	418584-01	1	1	1					
3	MECHANICAL SEAL (B)	H5-PS9, 5	415817-01	1	1	x1					
	MECHANICAL SEAL / R	HKU90-J9001	465627-01			o1					
4	"O" RING	1AP18	7611-P018	1	1	1					
5	PLATE – PUMP	SS	403013-01	1	1	1					
6	PUMP GASKET	NR	403014-01	1	1	x1					
		EPDM	4A2974-01			o1					
7	IMPELLER	ABS	417082-01	1	1	1					
8	PIN	SS	414102-01	1	1	x1					
			4A0648-01			o1					
9	PUMP HOUSING	ABS	211409-02	1	1	1					
9a	PAN HEAD SCREW	4X20, SS	7C12-0420	4	4	4					
9b	TOOTH WASHER	SS, 4 MM	7R22-0400	2	2	2					
10	PLUG HOUSING	-	412832-06	1	1	1					

HA

G. Accessories

KM-630MAH-E

L-0, M-1, M-2, N-0, N-1, P-0, P-1



HA

Title: G. Accessories and Packaging Model: KM-630MAH-E														
Index No.	Description	Material or Model Number	Part Number	Required Number										
				L-0 M-1	M-2	N-0 N-1 P-0 P-1								
1	INSTRUCTION MANUAL	PAPER	91A1DH10A	1	1	1								
2	INSTALLATION MANUAL	PAPER	91A1KE11A	1	1	1								
3	UNIVERSAL BRACE	GS	4A0363-01	2	2	2								
3a	HEX HEAD BOLT	5X12, SUS	7B02-0512	4	4	4								
	PACKAGING (available only on models currently in production)	-	2A2145A03											
1	PALLET	-	2A2503-01	1	1	1								
2	TRAY	-	2A2173-02	1	1	1								
3	CORNER POST	-	3A0788-10	2	2	2								
4	CARTON	-	2A2125-04	1	1	1								
5	CORNER POST	-	3A0788-04	4	4	4								
6	SIDE PROTECTOR	-	4A2304-02	1	1	1								
7	SIDE PROTECTOR	-	4A2304-01	3	3	3								
8	WOOD BLOCK – A	-	4A2794-01	3	3	3								
9	WOOD BLOCK – B	-	4A2794-02	1	1	1								