



C € 89/336  
73/23

NUMBER: 71157  
ISSUED: DEC. 14, 1999  
REVISED: JULY 1, 2002

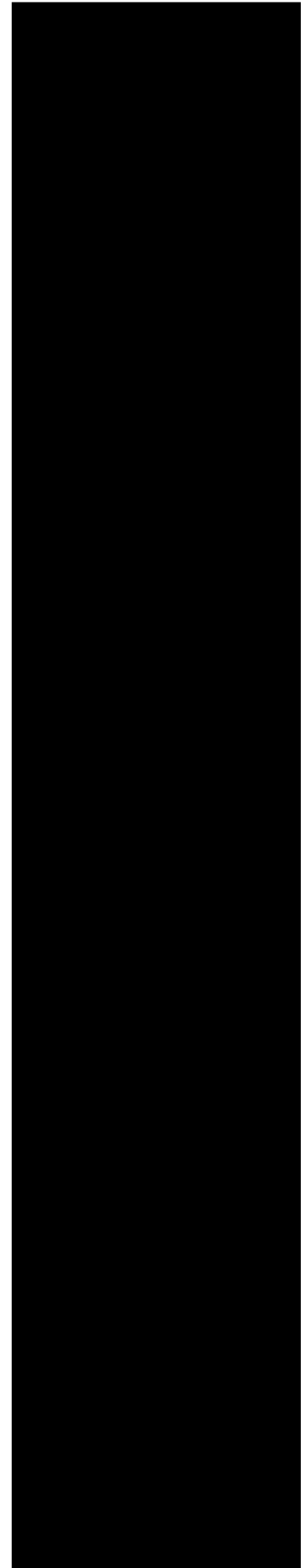
---

MODULAR CRESCENT CUBER

**KM-630MAF-E**  
**KM-630MWF-E**

**(FINAL) PARTS LIST**

**HOSHIZAKI**



## Auxiliary Codes

<b>KM-630MAF-E</b>	J-0	JAN 1999
	J-1	JUNE 1999
	K-0	DEC. 1999
	L-0	DEC. 2000

<b>KM-630MWF-E</b>	J-0	APR. 1999
	J-1	AUG. 1999

### IMPORTANT

IEC standards require that the clamping means of earthing terminals be adequately secured against accidental loosening and that accessible metal parts of the icemaker which may become live in the event of an insulation fault be permanently and reliably connected to an earthing terminal within the icemaker or to the earthing contact of the icemaker inlet.

This is accomplished in this icemaker through the use of stainless steel toothed washers, Hoshizaki Part # 7R22-0400.

## MATERIAL ABBREVIATIONS

### ALUMINUM

AL = Aluminum

### COPPER

CU = Copper

### PLASTIC

ABS = Acrylonitrile -butadiene - styrene  
AC = Polyacetal  
EVA = Ethylene vinyl acetate  
PA = Polyamide = Nylon  
PC = Polycarbonate  
PE = Polyethylene  
PES = Polyester  
PETP = Polyethylene terephthalate = Tetlon  
PP = Polypropylene  
PS = Polystyrene  
PTFE = Polytetrafluoroethylene = Teflon  
PUR = Polyurethane  
PVC = Polyvinyl chloride

### RUBBER

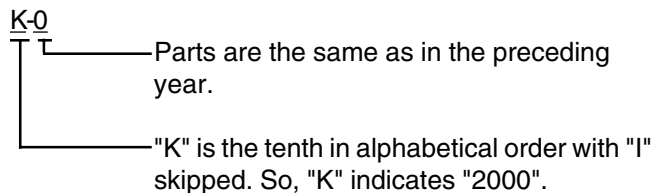
VN = Vinyl Nitrile  
EPDM = EP rubber  
NBR = Nitrile butadiene rubber  
NR = Natural rubber  
NP = Neoprene  
SI.R = Silicone rubber  
SY.R = Synthetic rubber  
EPH = Epichlorohydrin

### STEEL

GS = Galvanized steel  
SS = Stainless steel  
PS = Plated steel  
PAS = Primed steel

## AUXILIARY CODE

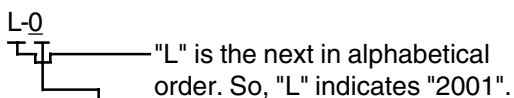
Ex.1



**(Note)** - = Part deleted.

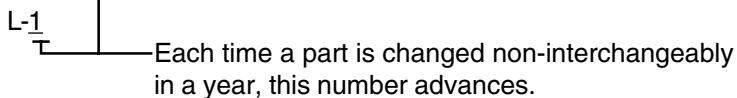
x = Part deleted and replaced by "o" (interchangeable) part.

Ex.2



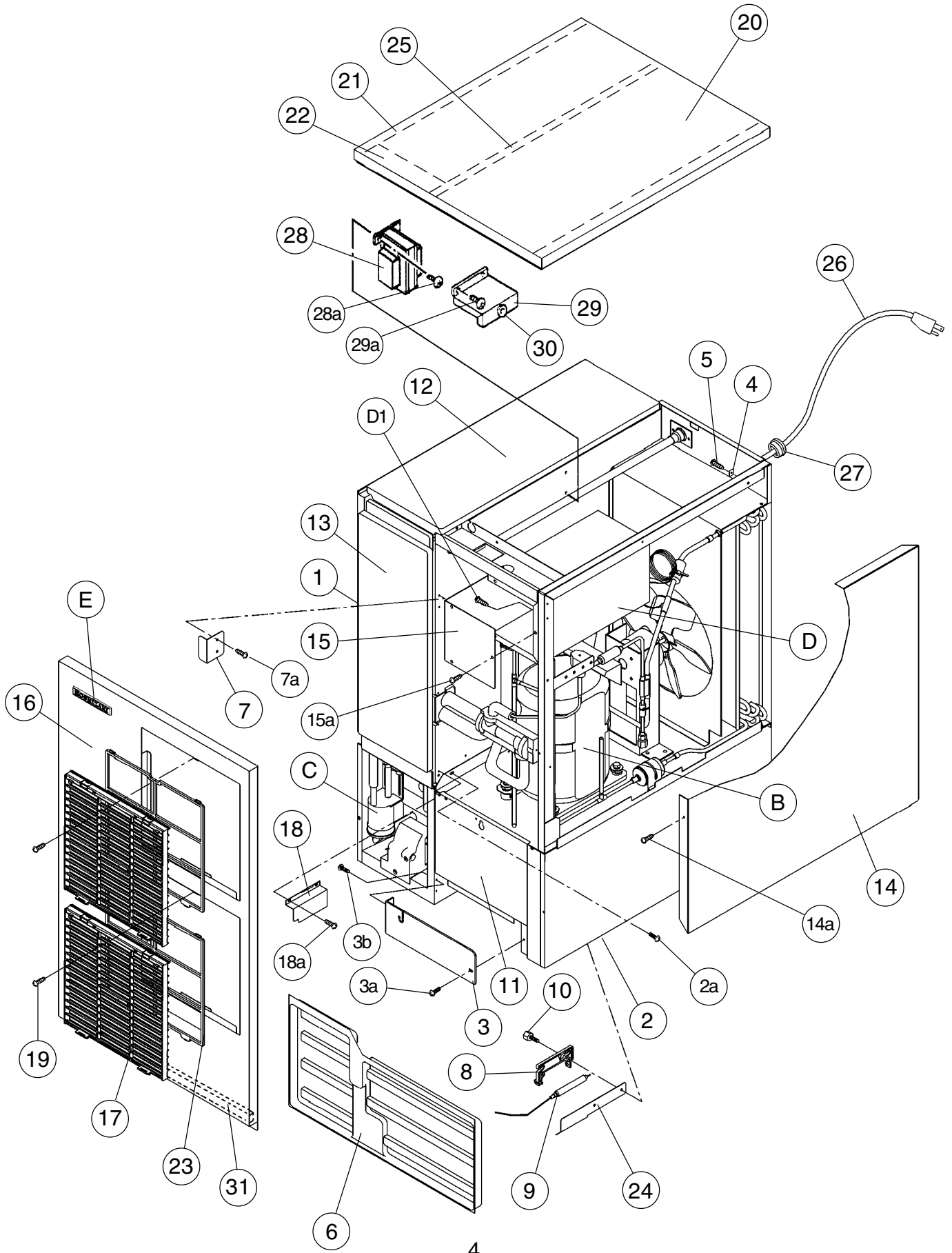
o = New part for "x" in the same auxiliary code.

Ex.3



A. ICE CUBER ASSEMBLY

J-0, J-1, K-0, L-0



MODEL: KM-630MAF-E TITLE: A. ICE CUBER ASSEMBLY								
INDEX NO.	DESCRIPTION	MATERIAL OR MODEL NUMBER	PART NUMBER	REQUIRED NUMBER				
				J-0	K-0			
				J-1	L-0			
B	REFRIGERATION CIRCUIT	-	1A0345A02	1	1			
C	WATER CIRCUIT		2A0971A01	1	1			
D	CONTROL BOX ASSEMBLY	-	2A1445A01	1	1			
D1	T2 SCREW	4X8	7P31-0408	3	3			
E	LABEL LOCATION	-	3A1268-01	1	1			
1	EVAP. CASE	HS-1013	1A0277G04	1	1			
2	BASE	-	2A1321G01	1	1			
2a	FT SCREW	4X8	7F31-0408	7	7			
3	FRAME	ABS	3A0217G01	1	1			
3a	TRUSS HEAD SCREW	4X8, SS	7C32-0408	1	1			
3b	TRUSS HEAD SCREW	4X25, SS	7C32-0425	2	2			
4	SQUARE WASHER	BRASS	433537-02	1	1			
5	SCREW - GROUNDING	BRASS	433304-02	1	1			
6	FRONT COVER	P.S	2A0182-01	1	1			
7	BARRIER-INSULATION	GS	4A1167-01	1	1			
7a	T2 SCREW	4X8	7P31-0408	2	2			
8	BULB HOLDER	PE	328919-01	1	1			
9	SPACER	PE	443545-01	1	1			
10	THUMBSCREW	SS, ABS	415949G03	2	2			
11	BASE COVER	SS	321525G01	1	1			
12	TOP INSULATION	PP	215730G01	1	1			
13	FRONT INSULATION	PP	215731G02	1	1			
14	SIDE PANEL (R)	SS	211811G02	1	1			
14a	T2 SCREW	4X8, SS	7P32-0408	1	1			
15	CONTROL BOX COVER	GS	3A0594-01	1	1			
15a	T2 SCREW	4X8	7P31-0408	3	3			
16	FRONT PANEL (A)	SS	212935-02	1	1			
17	LOUVER (B)	ABS	103121-03	2	2			

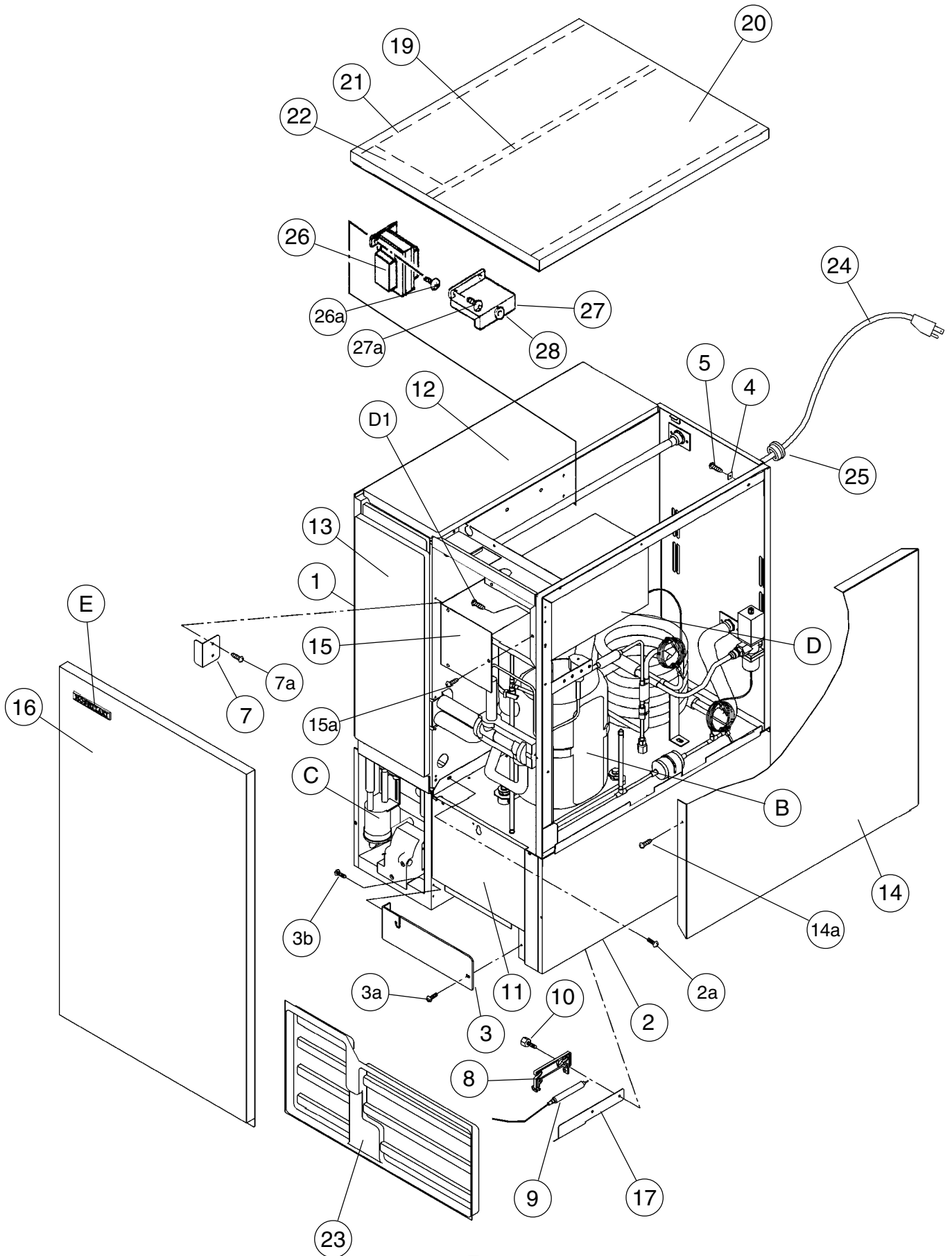
MODEL: KM-630MAF-E TITLE: A. ICE CUBER ASSEMBLY								
INDEX NO.	DESCRIPTION	MATERIAL OR MODEL NUMBER	PART NUMBER	REQUIRED NUMBER				
				J-0	K-0			
				J-1	L-0			
18	BARRIER	GS	4A0352-01	1	1			
18a	T2 SCREW	4X8	7P31-0408	2	2			
19	TAPPING SCREW ( BLACK)	STEEL, 4x8	433954-01	2	2			
20	TOP PANEL	SS (324859A01)	213544-01	1	x1			
		(324859A03)	220465-01		o1			
21	GASKET	PVC (324859A01)	427014-04	2	2			
22	INSULATION	PE FOAM (324859A01)	438012-01	1	1			
23	AIR FILTER (B)	ABS	208283G03	2	2			
24	DEFLECTOR	SS	4A1951-01	1	1			
25	GASKET (A)	(324859A01)	324859-03	1	1			
26	POWER SUPPLY CORD	-	452359-02	1	1			
27	BUSHING	CEE SR-6P30	450414-01	1	1			
28	TRANSFORMER	PY12-19204	446202-01	1	1			
28a	PAN HEAD SCREW W/ WASHER (LF)	4X8	7C1230408	4	4			
29	TRANS COVER	GS	446359-01	1	1			
29a	T2 SCREW	4X8	7P31-0408	2	2			
30	BUSHING	OCB-500	428394-02	1	1			
31	GASKET	L=554	4A0808L02		1			

HA

KM-630MWF-E

A. ICE CUBER ASSEMBLY

J-0, J-1

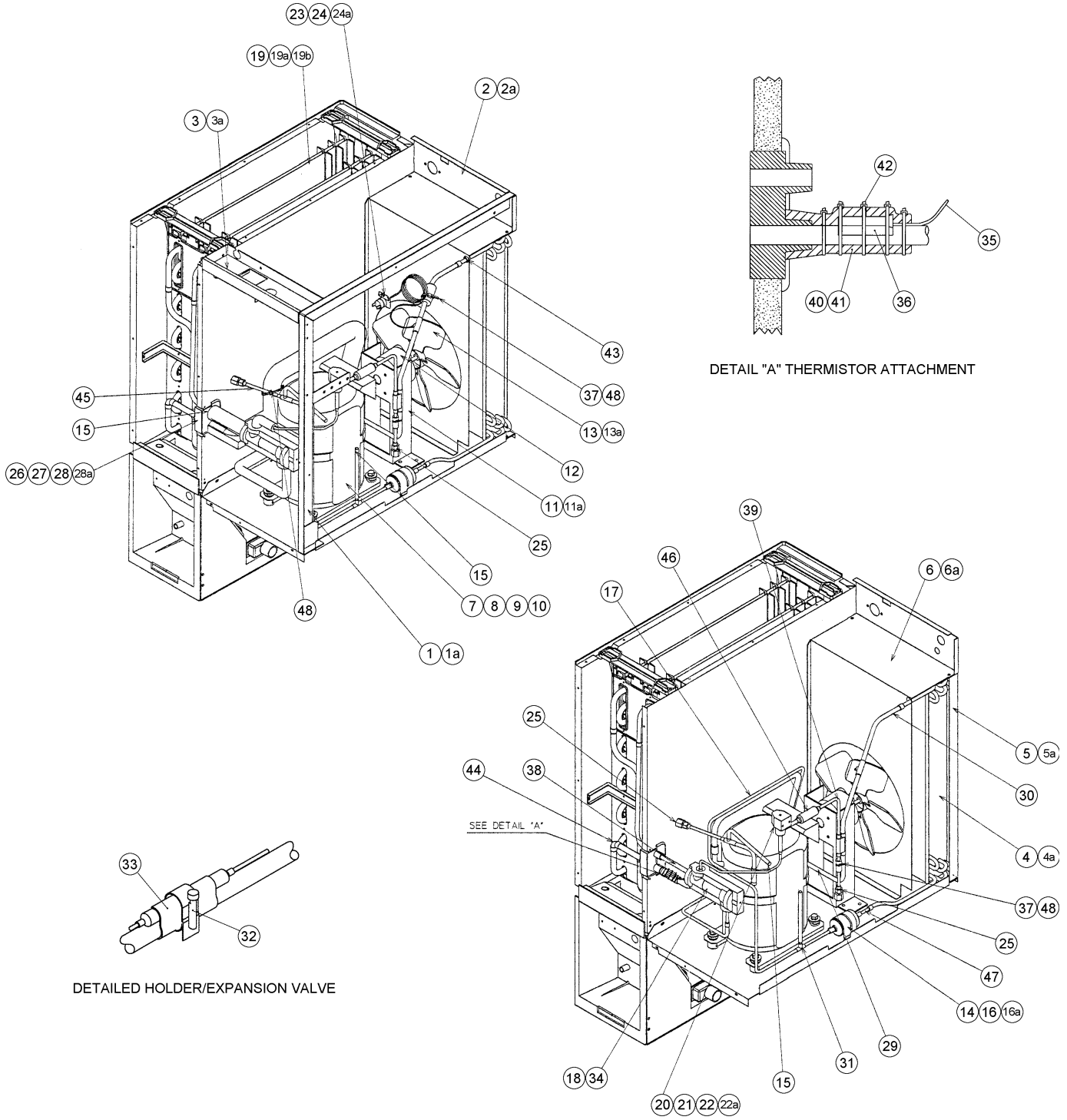


MODEL: KM-630MWF-E TITLE: A. ICE CUBER ASSEMBLY								
INDEX NO.	DESCRIPTION	MATERIAL OR MODEL NUMBER	PART NUMBER	REQUIRED NUMBER				
				J-0				
B	REFRIGERATION CIRCUIT	-	1A0343A02	1				
C	WATER CIRCUIT	-	2A0971A01	1				
D	CONT. BOX ASSEMBLY	-	2A1445A02	1				
D1	T2 SCREW	4X8	7P31-0408	3				
E	LABEL LOCATION	-	3A1275A01	1				
1	EVAP. CASE	HS-1013	1A0277G04	1				
2	BASE	-	2A1321G02	1				
2a	FT SCREW	4X8	7F31-0408	7				
3	FRAME	-	3A0217G01	1				
3a	TRUSS HEAD SCREW	4X8, SS	7C32-0408	1				
3b	TRUSS HEAD SCREW	4X25, SS	7C32-0425	2				
4	SQUARE WASHER	BRASS	433537-02	1				
5	SCREW - GROUNDING	BRASS	433304-02	1				
6	-	-	-					
7	BARRIER-INSULATION	GS	4A1167-01	1				
7a	T2 SCREW	4X8	7P31-0408	2				
8	BULB HOLDER	PE	328919-01	1				
9	SPACER	PE	443545-01	1				
10	THUMBSCREW	SS, ABS	415949G03	2				
11	BASE COVER	SS	321525G01	1				
12	TOP INSULATION	PP	215730G01	1				
13	FRONT INSULATION	PP	215731G02	1				
14	SIDE PANEL (R)	SS	211811G02	1				
14a	T2 SCREW	4X8, SS	7P32-0408	1				
15	CONTROL BOX COVER	GS	3A0594-01	1				
15a	T2 SCREW	4X8	7P31-0408	3				
16	FRONT PANEL (A)	SS	2A1322-01	1				
17	DEFLECTOR	SS	4A1951-01	1				
18	-	-	-					



HA

MODEL: KM-630MWF-E TITLE: A. ICE CUBER ASSEMBLY								
INDEX NO.	DESCRIPTION	MATERIAL OR MODEL NUMBER	PART NUMBER	REQUIRED NUMBER				
				J-0				
19	GASKET (A)	(324859A01)	324859-03	1				
20	TOP PANEL	SS , (324859A01)	213544-01	x1				
		(324859A03)	220465-01	o1				
21	GASKET	PVC, (324859A01)	427014-04	2				
22	INSULATION	PE FOAM, (324859A01)	438012-01	1				
23	FRONT COVER	P.S	2A0182-01	1				
24	POWER SUPPLY CORD	-	452359-02	1				
25	BUSHING	CEE SR-6P30	450414-01	1				
26	TRANSFORMER	PY12-19204	446202-01	1				
26a	PAN HEAD SCREW W/ WASHER (LF)	4x8	7C1230408	4				
27	TRANS COVER	GS	446359-01	1				
27a	T2 SCREW	4x8	7P31-0408	2				
28	BUSHING	OCB-500	728394-02	1				



DETAIL "A" THERMISTOR ATTACHMENT

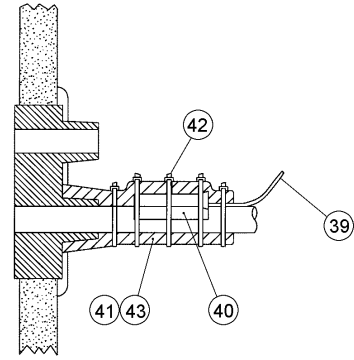
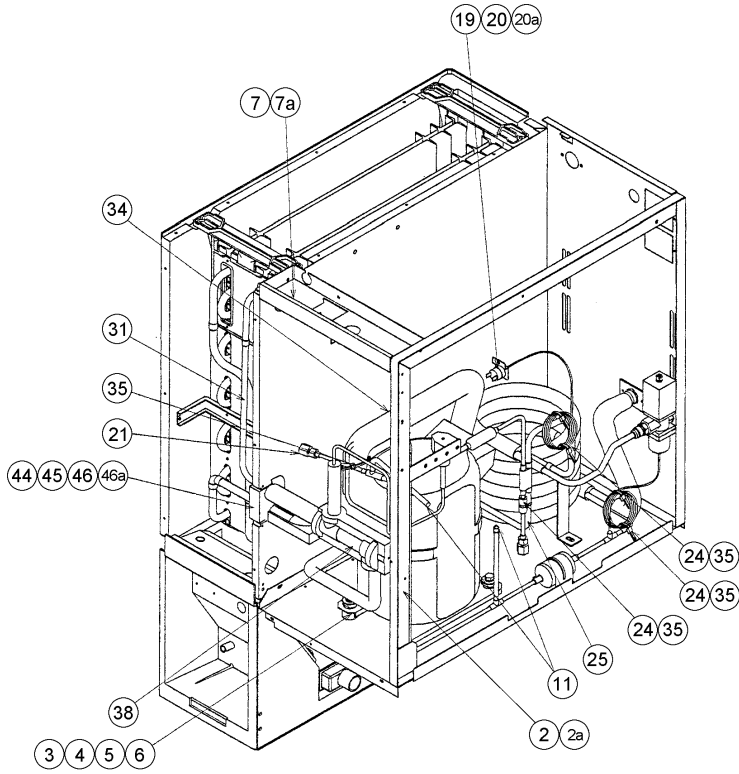
DETAILED HOLDER/EXPANSION VALVE

MODEL: KM-630MAF-E TITLE: B. REFRIGERATION CIRCUIT								
INDEX NO.	DESCRIPTION	MATERIAL OR MODEL NUMBER	PART NUMBER	REQUIRED NUMBER				
				J-0	K-0			
				J-1	L-0			
1	SIDE FRAME	GS	2A1460G01	1	1			
1a	T2 SCREW	4X8	7P31-0408	4	4			
2	REAR PANEL	GS	3A1302G01	1	1			
2a	T2 SCREW	4X8	7P31-0408	3	3			
3	TOP FRAME	GS	3A1263-01	1	1			
3a	T2 SCREW	4X8	7P31-0408	2	2			
4	CONDENSER	-	218912-01	1	1			
4a	T2 SCREW	4X8	7P31-0408	2	2			
5	BARRIER	GS	433693-02	1	1			
5a	T2 SCREW	4X8	7P31-0408	2	2			
6	SHROUD	GS	2A1325-01	1	1			
6a	T2 SCREW	4X8	7P31-0408	2	2			
7	COMPRESSOR	RS64C1E-IAZ-219	4A1839-01	1	1			
8	BOLT	8X45	437889-01	4	4			
9	SPACER	-	434404-01	4	4			
10	GROMMET	527-0039-04	434403-01	4	4			
11	FAN MOTOR BRACKET	GS	327180-01	1	1			
11a	HEX HEAD BOLT W/WASHER (LF)	5X12	7B0230512	4	4			
12	FAN MOTOR	U90B1 7190-1031	440911-01	1	1			
13	FAN BLADE	AD10CW32	444898-01	1	1			
13a	SELF LOCKING NUT NO. 8-32	-	7N21I0832	4	4			
14	DRIER	CW-0325-S	4A1413-01	1	1			
15	ENDCAPS	-	4A1413F01	2	2			
16	DRIER BRACKET	GS	4A0807-01	1	1			
16a	T2 SCREW	4X8	7P31-0408	2	2			
17	HEAT EXCHANGER	-	446715-01	1	x1			
		-	2A1586G01		o1			
18	EXP. VALVE	HFE-10 NHDU-3	4A1684-01	1	1			
19	EVAPORATOR	-	106396G01	1	1			

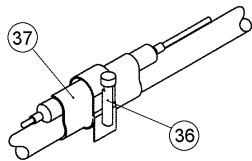
MODEL: KM-630MAF-E TITLE: B. REFRIGERATION CIRCUIT								
INDEX NO.	DESCRIPTION	MATERIAL OR MODEL NUMBER	PART NUMBER	REQUIRED NUMBER				
				J-0	K-0			
				J-1	L-0			
19a	T2 SCREW	4X16, SS	7P31-0416	4	4			
19b	T2 SCREW	4X12, SS	7P32-0412	2	2			
20	VALVE BODY	70	440352-01	1	1			
21	COIL-VALVE	ABS-25-1-HD-2	440353-01	1	1			
22	BOLT		440353F01	1	1			
22a	TRUSS HEAD SCREW	4X8	7C31-0408	2	2			
23	PRESSURE SWITCH	ACB-1UB09	433441-07	1	1			
24	PRESS. SWITCH BRACKET	GS	434938-01	1	1			
24a	T2 SCREW	4X8	7P31-0408	1	1			
25	ACCESS VALVE	TCJ-2F20NHDU-1	457729-01	2	2			
26	RUBBER TUBE (A)	EPDM	3A1044-01	1	1			
27	RUBBER TUBE (B)	EPDM	3A1045-01	1	1			
28	INSULATION HOLDER	SS	4A1550-01	1	1			
28a	T2 SCREW	4X8, SS	7P32-0408	2	2			
29	COPPER TUBE (A) – HIGH SIDE	COPPER	3A1157G02	1	1			
30	COPPER TUBE (B) – HIGH SIDE	COPPER	4A1782G01	1	1			
31	COPPER TUBE (E) – HIGH SIDE	COPPER	3A1213G01	1	1			
32	CLAMP	SS	443461-02	1	1			
33	HOLDER/EXP. VALVE – 3/8	SS	3A0107-01	1	1			
34	EXP. VALVE COVER	PE FOAM	3A0944-01	1	1			
35	THERMISTOR	-	429006-03	1	1			
36	HOLDER-THERMISTOR	COPPER	427430-01	1	1			
37	INSULATION TUBE	L=40	7762-1020	2	2			
38	COPPER TUBE – LOW SIDE	COPPER	3A1193G01	1	1			
39	COPPER TUBE (A) – HOT GAS	COPPER	4A1755-01	1	1			
40	INSULATION THERMISTOR (A)	PE FOAM	439368-01	1	1			
41	INSULATION THERMISTOR (B)	PE FOAM	439368-02	1	1			

HA

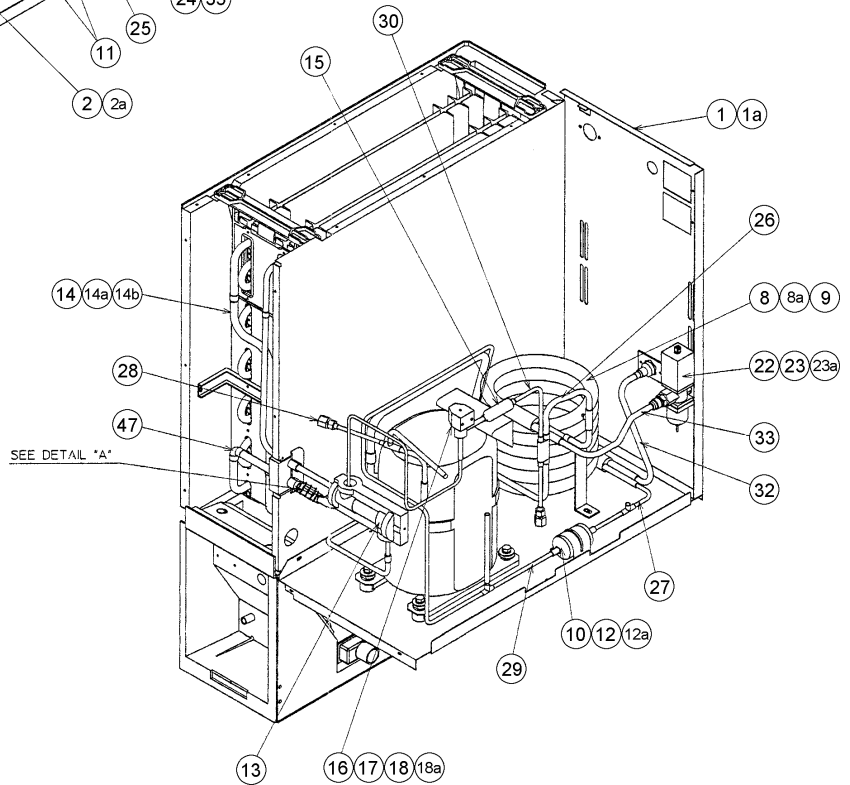
MODEL: KM-630MAF-E TITLE: B. REFRIGERATION CIRCUIT								
INDEX NO.	DESCRIPTION	MATERIAL OR MODEL NUMBER	PART NUMBER	REQUIRED NUMBER				
				J-0	K-0			
42	CABLE TIE	CV-200	7920-0010	3	3			
43	BUSHING	OCB-625	428394-03	1	1			
44	ELBOW	COPPER	417395-03	1	1			
45	COPPER TUBE – ACCESS VALVE	COPPER	4A1953G01	1	x1			
		COPPER	4A2025G01		o1			
46	STRAINER	PARKER	441569-02	1	1			
47	COPPER TUBE (F) – HIGH SIDE	COPPER	4A1108-01	1	1			
48	CABLE TIE	CV-150	7920-0003	4	4			



DETAIL "A" THERMISTOR ATTACHMENT



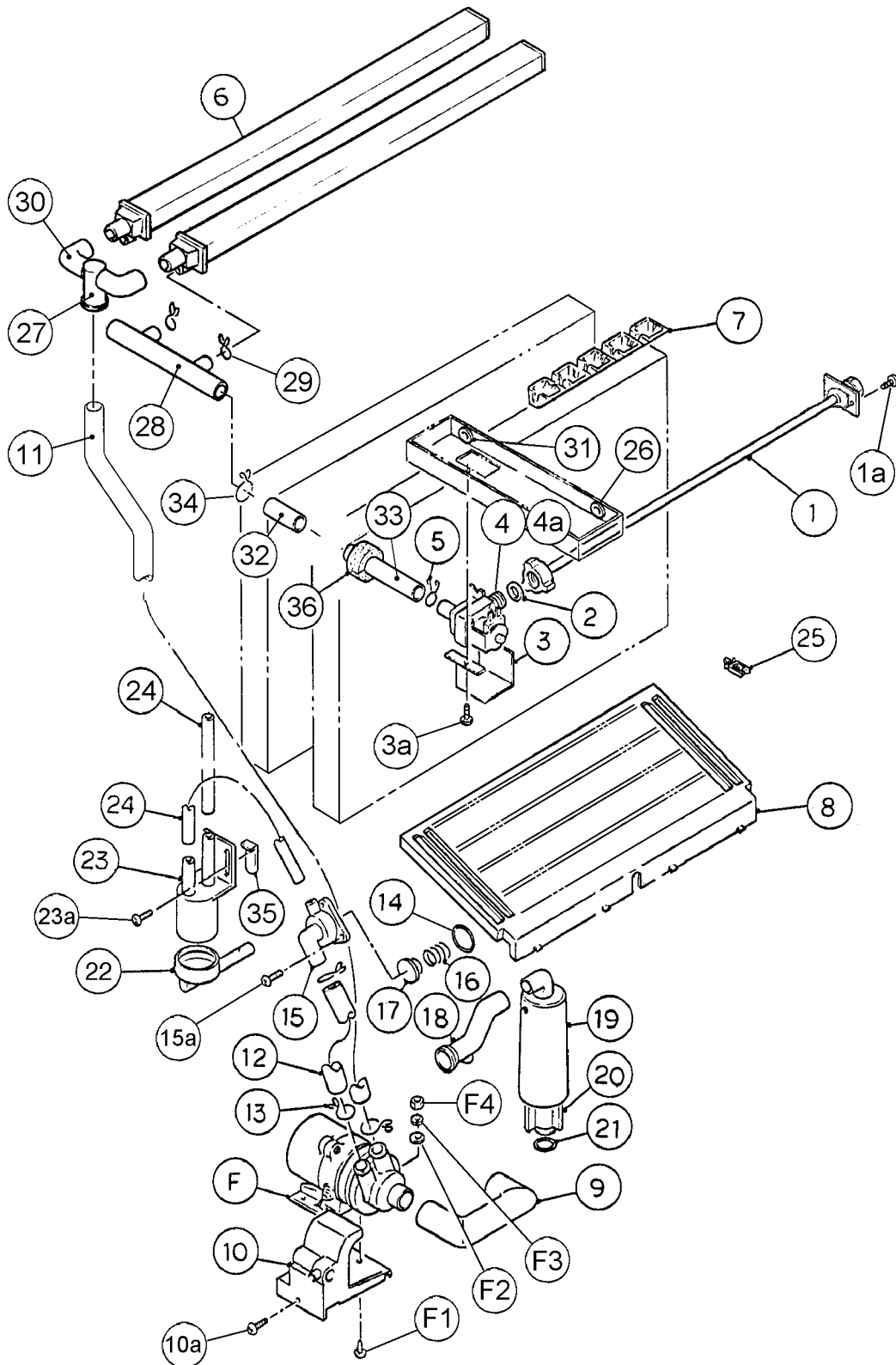
DETAILED HOLDER/EXPANSION VALVE



MODEL: KM-630MWF-E TITLE: B. REFRIGERATION CIRCUIT								
INDEX NO.	DESCRIPTION	MATERIAL OR MODEL NUMBER	PART NUMBER	REQUIRED NUMBER				
				J-0				
1	REAR PANEL	GS	2A1494G01	1				
1a	T2 SCREW	4X8	7P31-0408	5				
2	SIDE FRAME	GS	2A1460G01	1				
2a	T2 SCREW	4X8	7P31-0408	4				
3	COMPRESSOR	RS64C1E-1AZ-219	4A1839-01	1				
4	GROMMET	527-0039-04	434403-01	4				
5	SPACER		434404-01	4				
6	BOLT	8X45	437889-01	4				
7	TOP FRAME	GS	3A1263-01	1				
7a	T2 SCREW	4X8	7P31-0408	2				
8	CONDENSER-WATER COOLED		212929-03	1				
8a	HEX. HEAD BOLT W/WASHER (LF)	5X10	7B0230510	3				
9	WASHER		4A0655-03	3				
10	DRIER	CW-0325-S	4A1413-01	1				
11	ENDCAP		4A1413F01	2				
12	DRIER BRACKET	GS	4A0807-01	1				
12a	T2 SCREW	4X8	7P31-0408	2				
13	EXP. VALVE	HFE-10 NHDU-3	4A1684-01	1				
14	EVAPORATOR		106396G01	1				
14a	T2 SCREW	4X16, SUS	7P32-0416	4				
14b	T2 SCREW	4X12, SUS	7P32-0412	2				
15	STRAINER	PARKER	441569-02	1				
16	VALVE BODY	70	440352-01	1				
17	COIL-VALVE	ABS-25-1-HD-2	440353-01	1				
18	BOLT		440353F01	1				
18a	TRUSS HEAD SCREW	4X8	7C31-0408	2				
19	PRESSURE SWITCH	ACB-2UB04	433441-05	1				
20	PRESS. SWITCH BRACKET	GS	434938-01	1				
20a	T2 SCREW	4X8	7P31-0408	1				

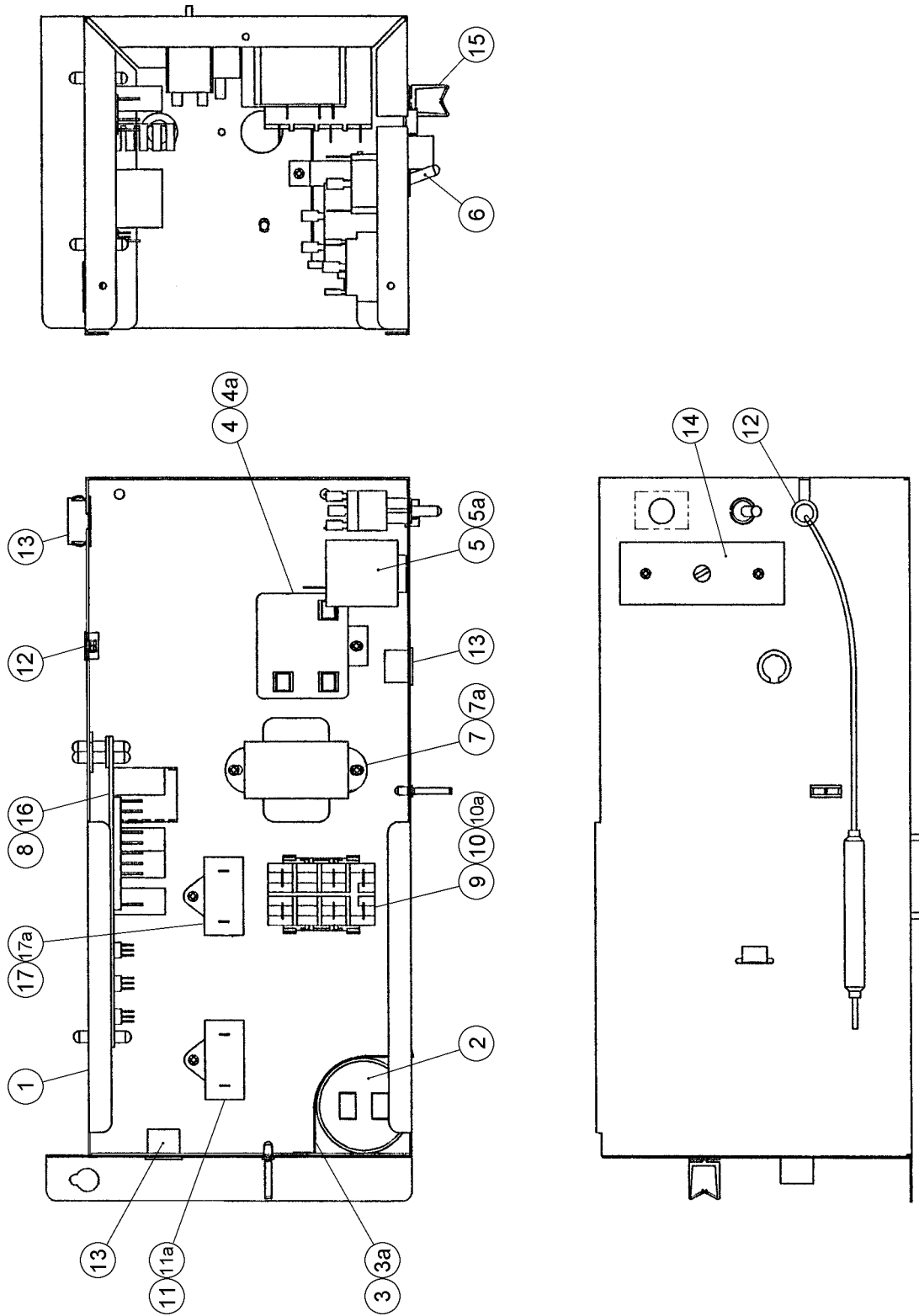
MODEL: KM-630MWF-E TITLE: B. REFRIGERATION CIRCUIT								
INDEX NO.	DESCRIPTION	MATERIAL OR MODEL NUMBER	PART NUMBER	REQUIRED NUMBER				
				J-0				
21	ACCESS VALVE	FV180D001	446715-01	2				
22	MALE CONNECTOR	4A1284-01	4A1284-01	1				
23	WATER REGULATOR	V46DA-3	4A0911-03	1				
23a	TRUSS HEAD SCREW	4X6	7C31-0406	2				
24	INSULATION TUBE	L=40	7762-1020	3				
25	COPPER TUBE (A) – HIGH SIDE	COPPER	3A1157G02	1				
26	COPPER TUBE (C) – HIGH SIDE	COPPER	4A1787G01	1				
27	COPPER TUBE (B) – HIGH SIDE	COPPER	4A1780G01	1				
28	COPPER TUBE – ACCESS VALVE	COPPER	4A2025G01	1				
29	COPPER TUBE (E) – HIGH SIDE	COPPER	3A1213G02	1				
30	COPPER TUBE (A) – HOT GAS	COPPER	7A1755-01	1				
31	COPPER TUBE – LOW SIDE	COPPER	3A1193G02	1				
32	COPPER TUBE (A) – WATER CIRCUIT	COPPER	4A1788G01	1				
33	COPPER TUBE (B) – WATER CIRCUIT	COPPER	3A1331G01	1				
34	HEAT EXCHANGER	COPPER	2A1586G01	1				
35	CABLE TIE	CV-150	7920-0003	6				
36	CLAMP	SS	443461-02	1				
37	HOLDER/EXP. VALVE – 3/8	SS	3A0107-01	1				
38	EXP. VALVE COVER	PE FOAM	3A0944-01	1				
39	THERMISTOR		429006-03	1				
40	HOLDER – THERMISTOR	COPPER	427430-01	1				
41	INSULATION – THERMISTOR (A)	PE FOAM	439368-01	1				
42	CABLE TIE	CV-200	7920-0010	3				
43	INSULATION – THERMISTOR (B)	PE FOAM	439368-02	1				
44	RUBBER TUBE (A)	EPDM	3A1044-01	1				
45	RUBBER TUBE (B)	EPDM	3A1045-01	1				
46	INSULATION HOLDER	SS	4A1550-01	1				
46a	T2 SCREW	4X8, SS	7P32-0408	2				
47	ELBOW	COPPER	417395-03	1				



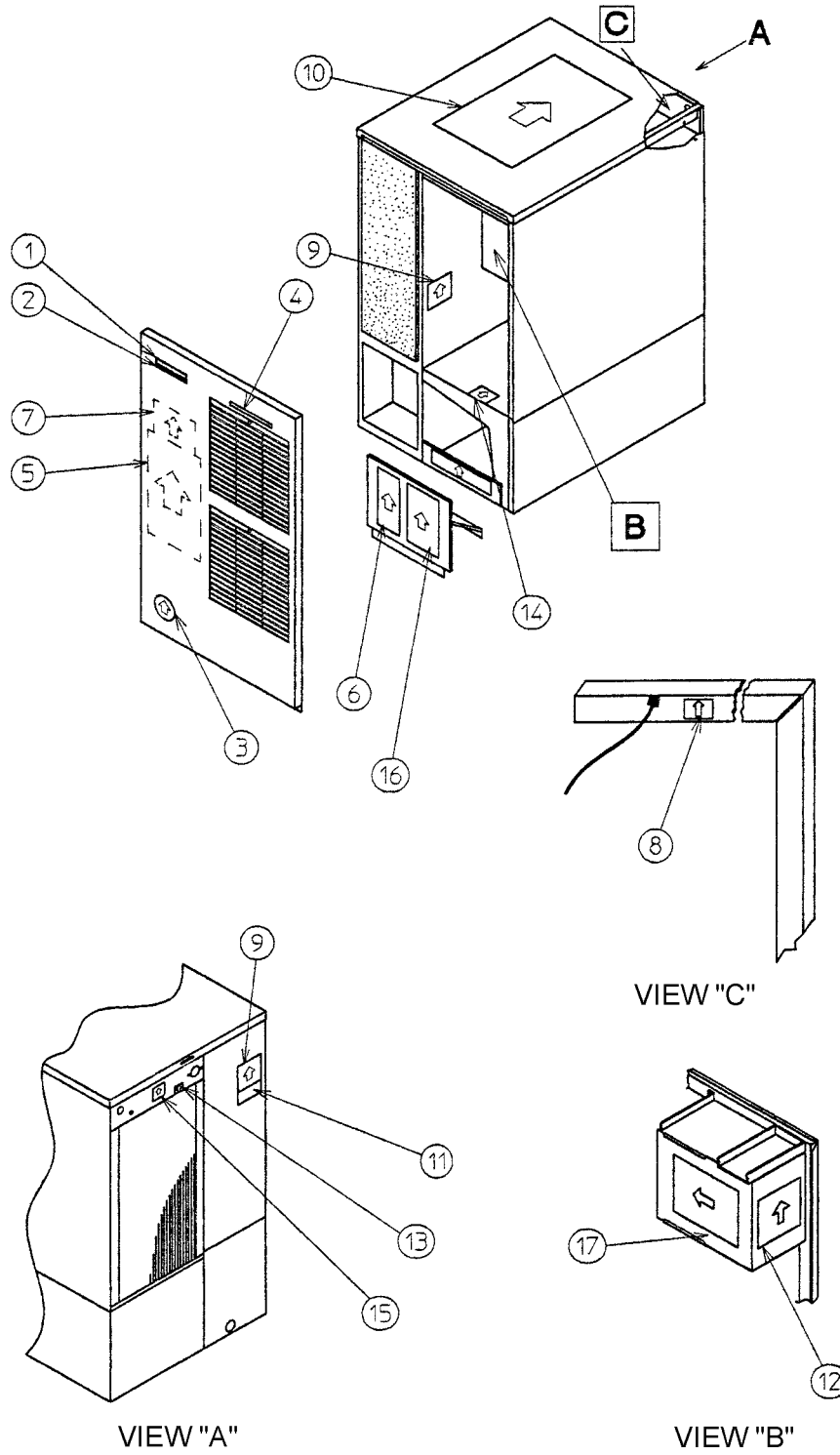


MODEL: KM-630MAF-E, MWF-E TITLE: C. WATER CIRCUIT								
INDEX NO.	DESCRIPTION	MATERIAL OR MODEL NUMBER	PART NUMBER	REQUIRED NUMBER				
				J-0	K-0			
				J-1	L-0			
F	PUMP MOTOR ASSEMBLY	HS-0102	321444A04	1	1			
F1	TRUSS HEAD SCREW	4X16, SS	7C32-0416	1	1			
F2	FLAT WASHER	M4, SS	7W22-0400	1	1			
F3	SPLIT LOCK WASHER	M4, SS	7L22-0400	1	1			
F4	HEX NUT	M4, SS	7N12-0400	1	1			
1	WATER SUPPLY PIPE	COPPER	4A0768G06	1	1			
1a	T2 SCREW	4X8	7P31-0408	2	2			
2	RUBBER GASKET	NR	413854-03	1	1			
3	WATER VALVE BRACKET	GS	3A0736-01	1	1			
3a	T2 SCREW	4X8	7P31-0408	1	1			
4	WATER VALVE	V-19	4A1176-01	1	1			
4a	TRUSS HEAD SCREW	4X8	7C32-0408	2	2			
5	HOSE CLAMP	SS, 18MM	427443-05	1	1			
6	SPRAY TUBE	PE	433520G01	2	2			
7	SPRAY GUIDE (A)	PE	208586-01	6	6			
8	CUBE GUIDE	ABS	212088-01	1	1			
9	SUCTION HOSE	EPDM	433466-01	1	1			
10	PUMP MOTOR BRACKET	PC	211408-01	1	1			
10a	FLAT HEAD SCREW	4X12, SS	7F32-0412	1	1			
11	VINYL HOSE	L=785	7716-2025	1	1			
12	VINYL HOSE	L=110	7716-2025	1	1			
13	HOSE CLAMP	SS, 25MM	427443-03	6	6			
14	"O" RING	1AG35	7611-G035	1	1			
15	VALVE HOUSING - DRAIN	ABS	321001-01	1	1			
15a	T2 SCREW	4X10, SS	7P32-0410	3	3			
16	SPRING	SS	3A0875-01	1	1			
17	VALVE SHEET	EPDM	433705-01	1	1			
18	DRAIN HOSE	SANTOPRENE	433468-01	1	1			
19	OVERFLOW CAP	PE	321002-01	1	1			

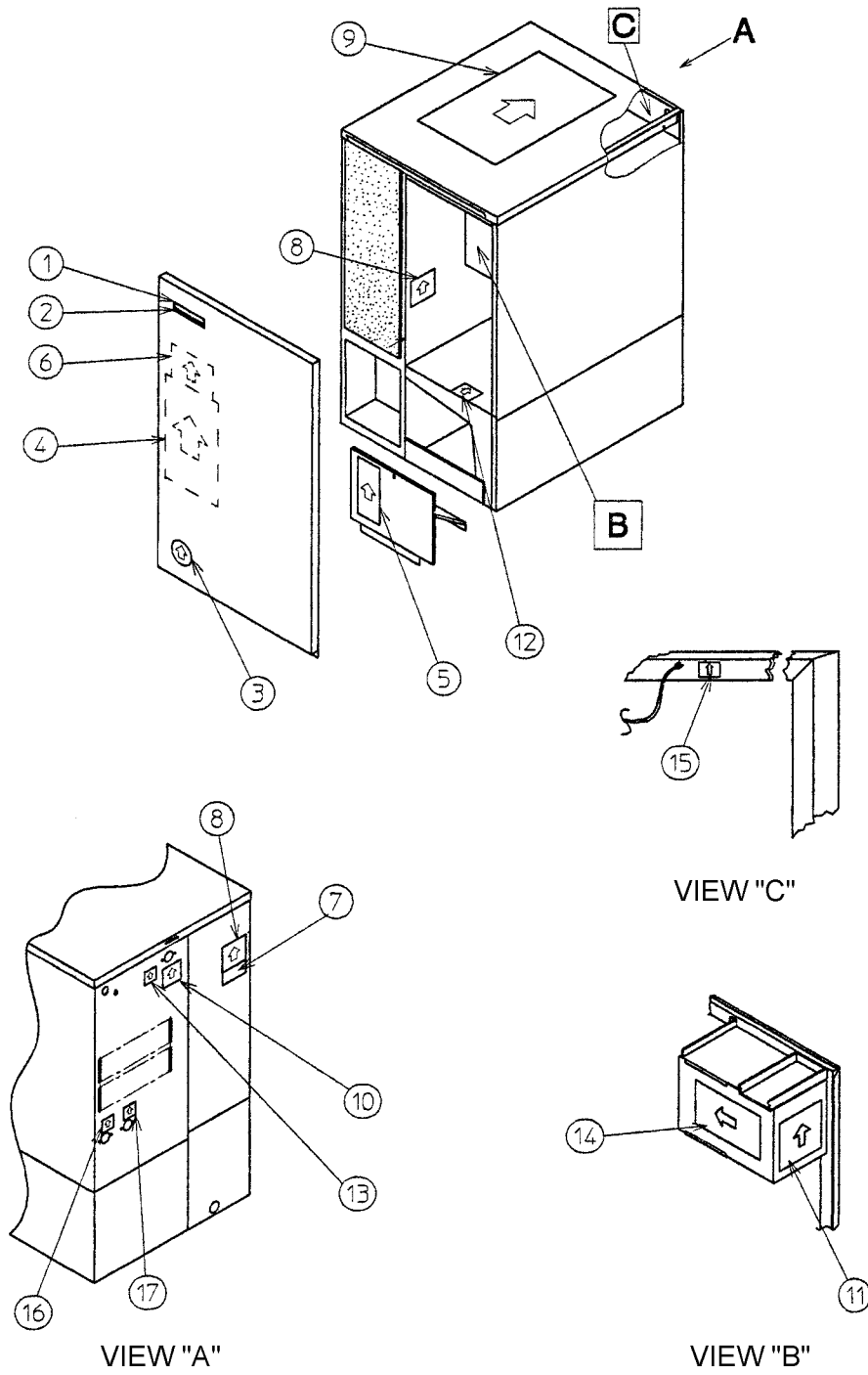
MODEL: KM-630MAF-E, MWF-E TITLE: C. WATER CIRCUIT								
INDEX NO.	DESCRIPTION	MATERIAL OR MODEL NUMBER	PART NUMBER	REQUIRED NUMBER				
				J-0	K-0			
				J-1	L-0			
20	OVERFLOW PIPE	ABS	430722-01	1	1			
21	"O" RING	EPDM	4A1234-01	1	1			
22	CONNECTOR – FLOAT SWITCH	EPDM	3A1325-01	1	1			
23	FLOAT SWITCH	163795	4A0886-01	1	1			
23a	T2 SCREW	4X12, SS	7P32-0412	2	2			
24	SILICONE HOSE	L=140	7730I3812	2	2			
25	WIRE SADDLE	VWS4238-C	4A0338-02	4	4			
26	BUSHING	OCB-500	428394-02	1	1			
27	DISTRIBUTOR	EPDM	432820-01	1	1			
28	DISTRIBUTOR HOSE		439374-01	1	1			
29	HOSE CLAMP	SS, 13.5 MM	427443-07	2	2			
30	ELBOW		433467-01	2	2			
31	BUSHING	OCB-750	428394-01	2	2			
32	JOINT PIPE	ABS	439329-01	1	1			
33	CONNECTING PIPE	DYNAFLEX	4A1142-02	1	1			
34	HOSE CLAMP	SS, 20 MM	427443-06	1	1			
35	FLOAT SWITCH STOP	SS	446358-01	1	1			
36	INSULATION (E)	PE FOAM	4A0392-01	1	1			



MODEL: KM-630MAF-E, MWF-E TITLE: D. CONTROL BOX ASSEMBLY								
INDEX NO.	DESCRIPTION	MATERIAL OR MODEL NUMBER	PART NUMBER	REQUIRED NUMBER				
				J-0 J-1	K-0 L-0			
1	CONT. BOX	-	3A0602G02	1	1			
2	CAPACITOR-STARTING	88-108 MFD 250V	3A0076-03	1	1			
3	STRAP	GS	434580-13	1	1			
3a	T2 SCREW	4X8	7P31-0408	1	1			
4	STARTER	040-001-51	434172-03	1	x1			
		-	4A1107-10		o1			
4a	T2 SCREW	4X8	7P31-0408	1	1			
5	THERMOSTAT	A30-3815-00	4A0824-01	1	1			
5a	TRUSS HEAD SCREW	4X8	7C31-0408	2	2			
6	TOGGLE SWITCH-VDE	8956K172	4A1147-01	1	1			
7	TRANSFORMER	26D285H	3A0172-01	1	1			
7a	T2 SCREW	4X8	7P31-0408	2	2			
8	BOARD SUPPORT	CBLS37-M	4A0336-03	4	4			
9	MAGNETIC CONTACTOR	VC20	428393-01	1	1			
10	BRACKET		428393F01	1	1			
10a	T2 SCREW	4X8	7P31-0408	2	2			
11	CAPACITOR	5.5 MFD 250 VAC	4A1025-03	1	1			
11a	T2 SCREW	4X8	7P31-0410	1	1			
12	BUSHING	OCB-500	428394-02	2	2			
13	BUSHING	OCB-875	428394-04	3	3			
14	CONTROL LABEL		4A1758-01	1	1			
15	WIRE SADDLE	VWS4238-C	4A0338-02	2	2			
16	CONTROLLER BOARD	HOS-001A	2A1410-01	1	1			
17	CAPACITOR (KM-630MAF-E ONLY)	250 VAC, 2.5 MFD	4A1025-05	1	1			
17a	T2 SCREW (KM-630MAF-E ONLY)	4X10	7P31-0410	1	1			

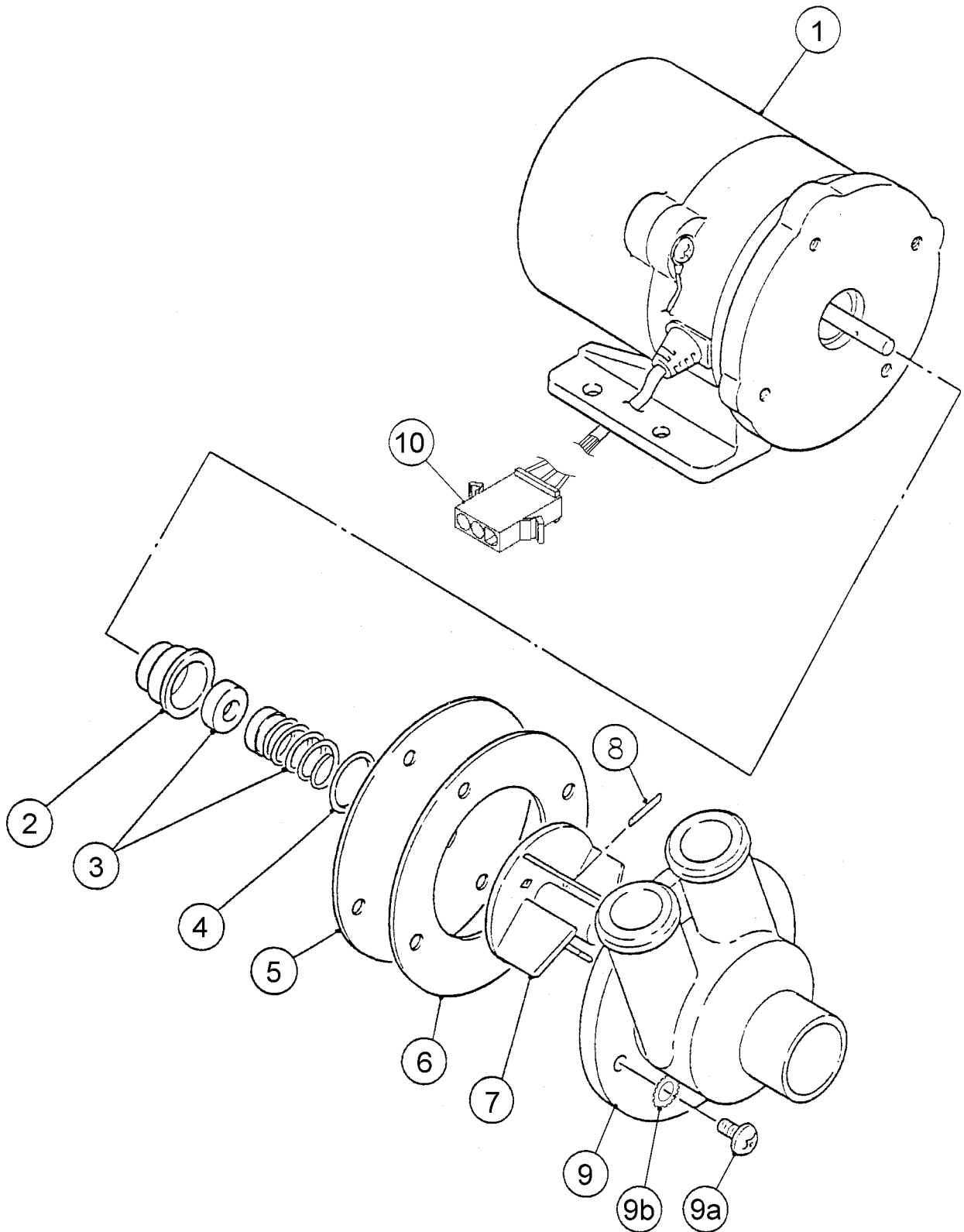


MODEL: KM-630MAF-E TITLE: E. LABEL LOCATION								
INDEX NO.	DESCRIPTION	MATERIAL OR MODEL NUMBER	PART NUMBER	REQUIRED NUMBER				
				J-0	K-0			
				J-1	L-0			
1	EMBLEM	PETP FILM	4A0560-01	1	1			
2	MODEL NUMBER LABEL	PETP FILM	4A1233-41	1	1			
3	LABEL – PENGUIN – (R)	PETP FILM	4A0526-01	1	1			
4	LABEL – AIR FILTER	PETP FILM	426177-01	1	1			
5	MAINTENANCE LABEL	PVC FILM	3A0725-01	1	1			
6	CAUTION LABEL (H)	PVC FILM	439148-01	1	1			
7	WIRING LABEL	PVC FILM	3A1478-01	1	1			
8	LABEL – GROUNDING (B)	PES FILM	450452-02	1	1			
9	NAMEPLATE	PES FILM	4A1844-01	2	2			
10	INSTRUCTION SHEET	PAPER	2A1310-01	1	1			
11	LABEL – CE	PES FILM	450668-01	1	1			
12	MANUAL LABEL	PVC FILM	4A1713-01	1	1			
13	WATER SUPPLY LABEL	PVC FILM	4A1158-01	1	1			
14	LABEL – R404A	PES FILM	4A0960-01	1	1			
15	INSTRUCTION LABEL	PVC FILM	4A1235-01	1	1			
16	CAUTION LABEL (F)	PVC FILM	439146-01	1	1			
17	LABEL – CONTROL BOARD	PVC FILM	3A1272-01	1	1			

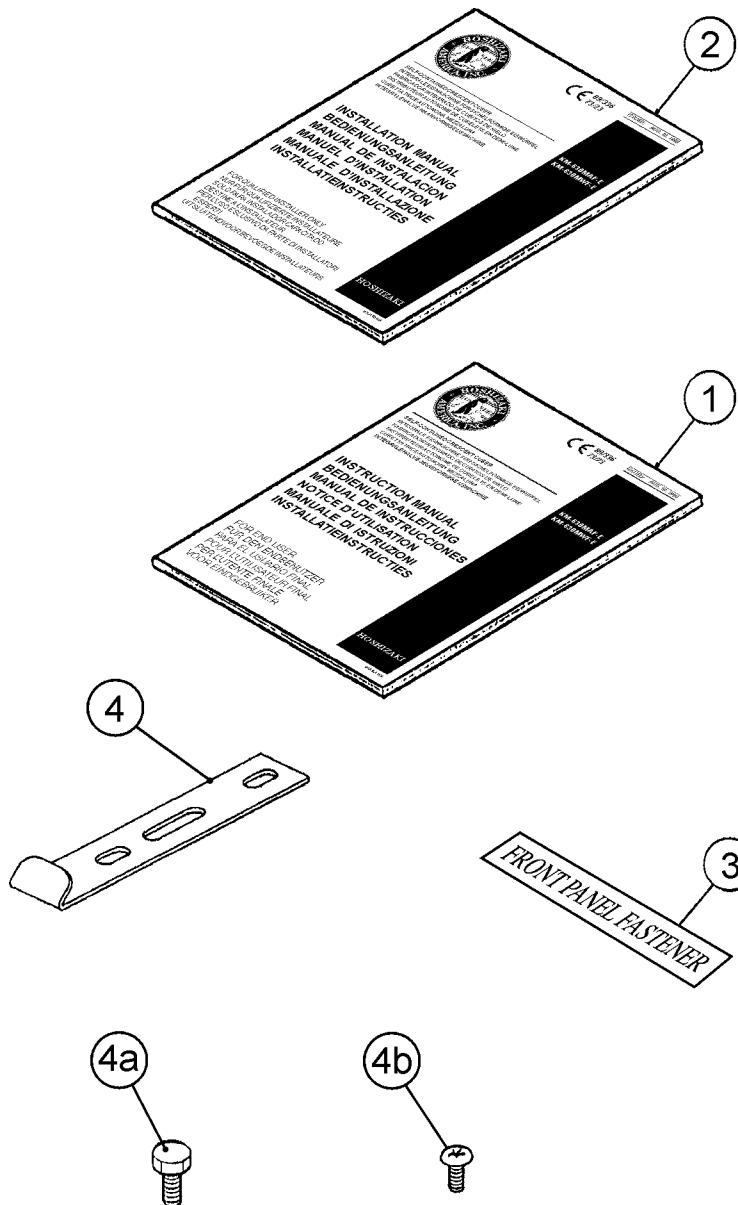




MODEL: KM-630MWF-E TITLE: E. LABEL LOCATION								
INDEX NO.	DESCRIPTION	MATERIAL OR MODEL NUMBER	PART NUMBER	REQUIRED NUMBER				
				J-0				
1	EMBLEM	PETP FILM	4A0560-01	1				
2	MODEL NUMBER LABEL	PETP FILM	4A1233-42	1				
3	LABEL – PENGUIN – (R)	PETP FILM	4A0526-01	1				
4	MAINTENANCE LABEL	PVC FILM	3A0725-01	1				
5	CAUTION LABEL (H)	PVC FILM	439148-01	1				
6	WIRING LABEL	PVC FILM	3A1478-01	1				
7	LABEL – CE	PES FILM	450668-01	1				
8	NAMEPLATE	PES FILM	4A1848-01	2				
9	INSTRUCTION SHEET	PAPER	2A1310-01	1				
10	WATER SUPPLY LABEL	PVC FILM	4A1158-01	1				
11	MANUAL LABEL	PVC FILM	4A1713-01	1				
12	LABEL – R404A	PES FILM	4A0960-01	1				
13	INSTRUCTION LABEL	PVC FILM	4A1235-01	1				
14	LABEL – CONTROL BOARD	PVC FILM	3A1272-01	1				
15	LABEL – GROUNDING (B)	PES FILM	450452-02	1				
16	LABEL – ARROW “OUT”	-	420743-01	1				
17	LABEL – ARROW “IN”	-	420743-02	1				



MODEL: KM-630MAF-E, MWF-E TITLE: F. PUMP MOTOR ASSEMBLY								
INDEX NO.	DESCRIPTION	MATERIAL OR MODEL NUMBER	PART NUMBER	REQUIRED NUMBER				
				J-0	K-0			
				J-1	L-0			
1	PUMP MOTOR	AP-TA4(H) 120V	2U0095-01	1	1			
2	RETAINER	SS	418584-01	1	1			
3	MECHANICAL SEAL (B)	H5-PS9, 5	415817-01	1	1			
4	"O" RING	1AP18	7611-P018	1	1			
5	PLATE – PUMP	SS	403013-01	1	1			
6	PUMP GASKET	NR	403014-01	1	1			
7	IMPELLER	ABS	417082-01	1	1			
8	PIN	SS	414102-01	1	1			
9	PUMP HOUSING	ABS	211409-02	1	1			
9a	PAN HEAD SCREW	4X20, SS	7C12-0420	4	4			
9b	TOOTH WASHER	SS, 4 MM	7R22-0400	2	2			
10	PLUG HOUSING	-	412832-06	1	1			



MODEL: KM-630MAF-E, MWF-E TITLE: G. ACCESSORIES								
INDEX NO.	DESCRIPTION	MATERIAL OR MODEL NUMBER	PART NUMBER	REQUIRED NUMBER				
				J-0 J-1	K-0 L-0			
1	INSTRUCTION MANUAL	PAPER	91A1DH10A	1	1			
2	INSTALLATION MANUAL	PAPER	91A1KE11A	1	1			
3	LABEL – FASTENER	PAPER	427122-01	1	1			
4	UNIVERSAL BRACE	GS	4A0363-01	2	2			
4a	HEX HEAD BOLT	5X12, SUS	7B02-0512	4	4			
4b	TRUSS HEAD SCREW	4X8, SUS	7C32-0408	1	1			