



CE 89/336  
73/23

NUMBER: 71220  
ISSUED: APRIL 15, 2003

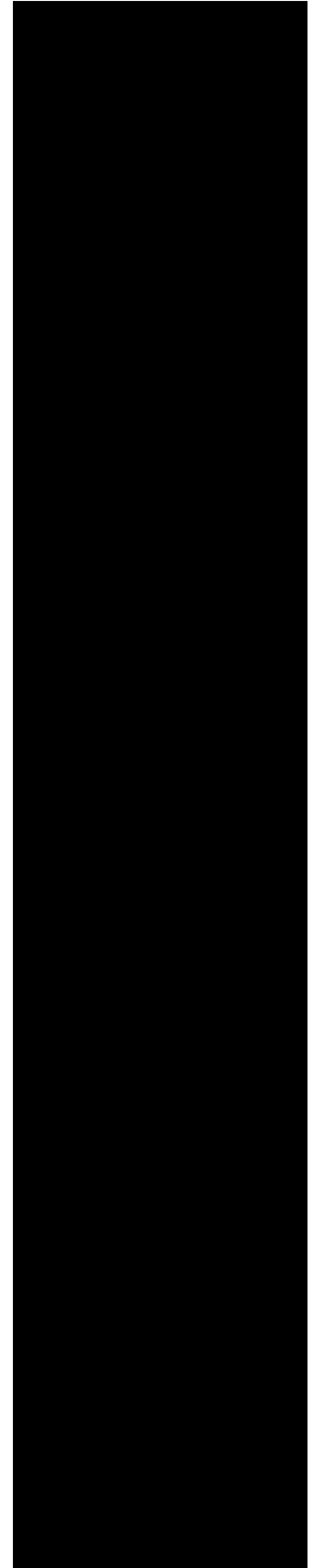
---

MODULAR CRESCENT CUBER

**KM-280MAH-E**

**PARTS LIST**

**HOSHIZAKI**



### Auxiliary Codes

<b>KM-280MAH-E</b>	L-0	JUNE 2001
	M-0	JUNE 2002
	M-2	SEPT., 2002
	N-0	JAN., 2003
	N-1	FEB., 2003

#### IMPORTANT

IEC standards require that the clamping means of earthing terminals be adequately secured against accidental loosening and that accessible metal parts of the icemaker which may become live in the event of an insulation fault be permanently and reliably connected to an earthing terminal within the icemaker or to the earthing contact of the icemaker inlet.

This is accomplished in this icemaker through the use of stainless steel toothed washers, Hoshizaki Part # 7R22-0400.

## MATERIAL ABBREVIATIONS

### ALUMINUM

AL = Aluminum

### COPPER

CU = Copper

### PLASTIC

ABS = Acrylonitrile -butadiene - styrene  
 AC = Polyacetal  
 EVA = Ethylene vinyl acetate  
 PA = Polyamide = Nylon  
 PC = Polycarbonate  
 PE = Polyethylene  
 PES = Polyester  
 PETP = Polyethylene terephthalate = Tetlon  
 PP = Polypropylene  
 PS = Polystyrene  
 PTFE = Polytetrafluoroethylene = Teflon  
 PUR = Polyurethane  
 PVC = Polyvinyl chloride

### RUBBER

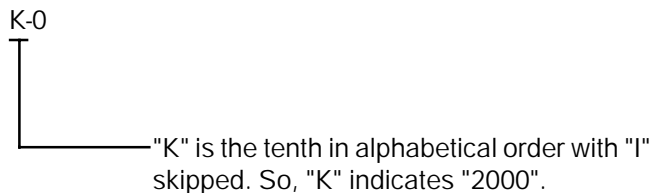
VN = Vinyl Nitrile  
 EPDM = EP rubber  
 NBR = Nitrile butadiene rubber  
 NR = Natural rubber  
 NP = Neoprene  
 SI.R = Silicone rubber  
 SY.R = Synthetic rubber  
 EPH = Epichlorohydrin

### STEEL

GS = Galvanized steel  
 SS = Stainless steel  
 PS = Plated steel  
 PAS = Primed steel

## AUXILIARY CODE

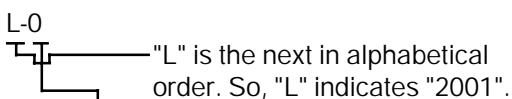
Ex.1



**(Note)** - = Part deleted.

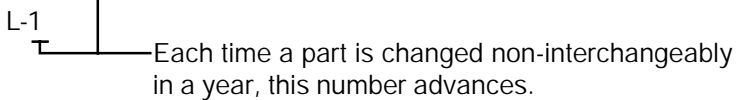
x = Part deleted and replaced by "o" (interchangeable) part.

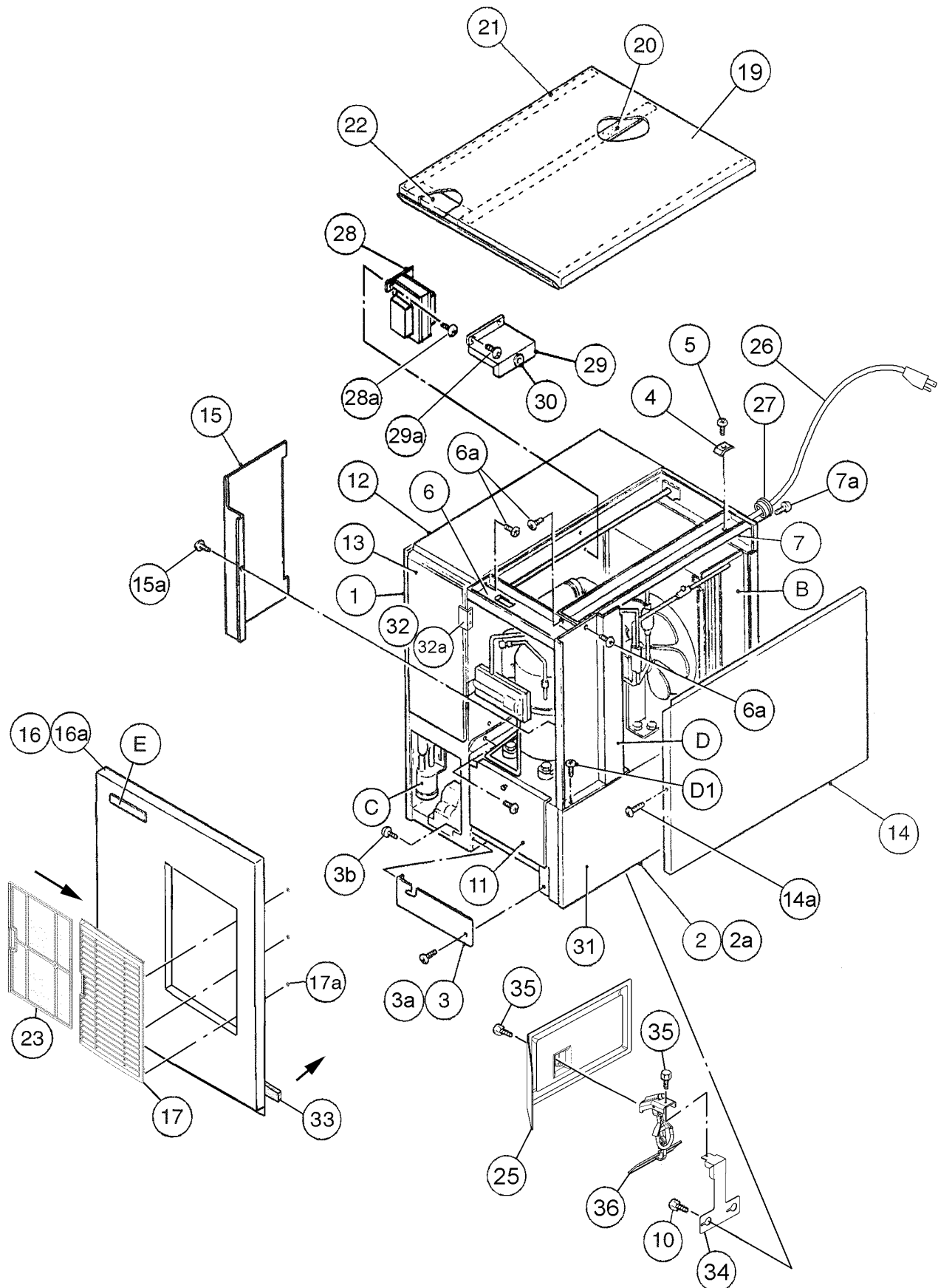
Ex.2

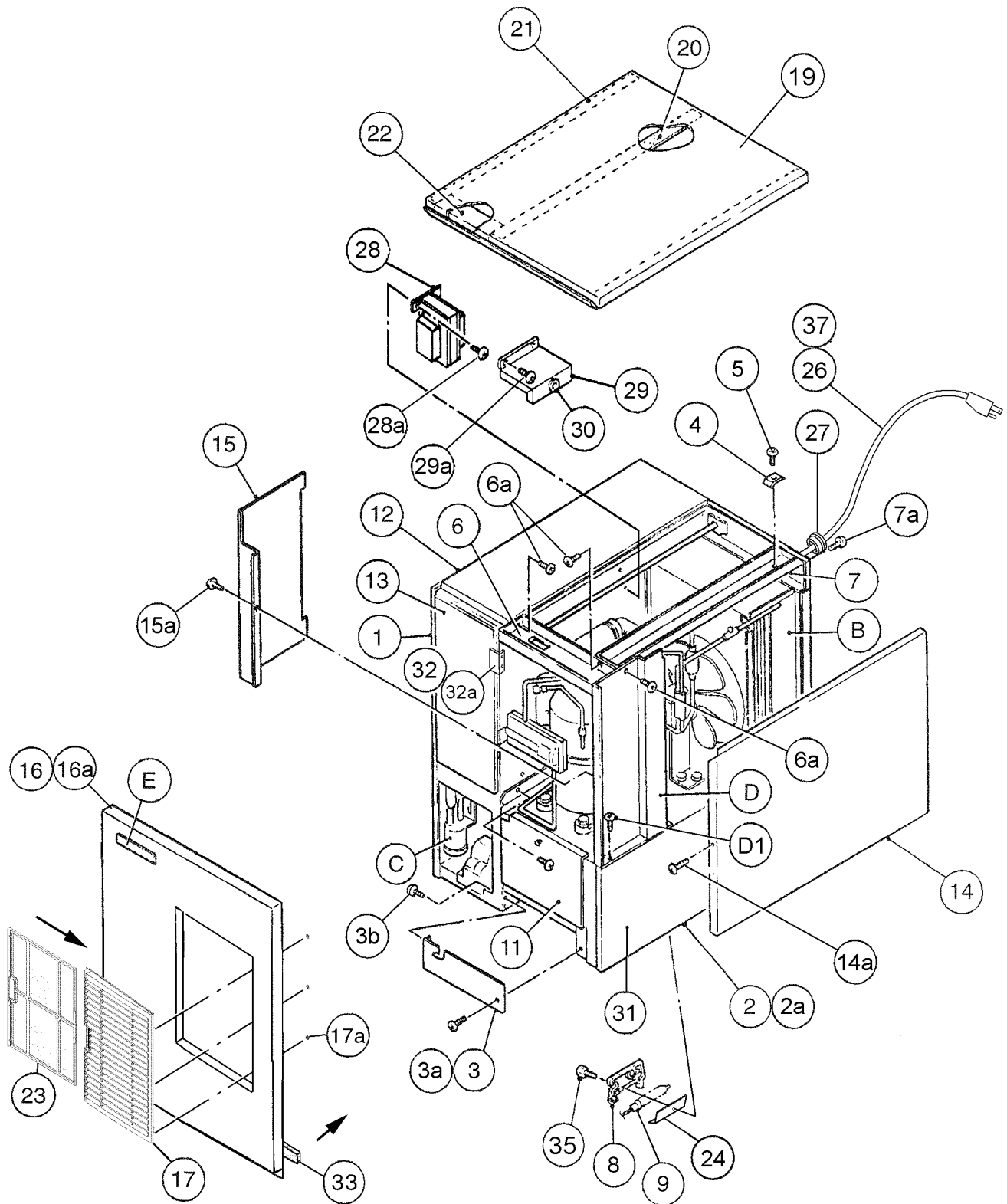


o = New part for "x" in the same auxiliary code.

Ex.3







MODEL: KM-280MAH-E TITLE: A. ICE CUBER ASSEMBLY								
INDEX NO.	DESCRIPTION	MATERIAL OR MODEL NUMBER	PART NUMBER	REQUIRED NUMBER				
				L-0	M-2	N-1		
				M-0	N-0			
B	REFRIGERATION CIRCUIT	-	1A0392A03	1	x1			
		-	1A0392A05		o1	1		
C	WATER CIRCUIT	-	1A0450A01	1	1	1		
D	CONTROL BOX ASSEMBLY	-	2A2315A01	1	-			
		-	2A2537A01		1	1		
D1	T2 SCREW	4X8	7P31-0408	4	4	4		
E	LABEL LOCATION	-	3A2075A01	1	-			
		-	3A2408A01		1	1		
1	EVAP. CASE	HS-1012	1A0579G03	1	1	1		
2	BASE	-	2A2146G04	1	1	1		
2a	FT SCREW	4X8, SS	7F32-0408	7	7	7		
3	FRAME	ABS	3A0217G01	1	-			
		-	3A2503G01		1	1		
3a	TRUSS HEAD SCREW	4X8, SS	7C32-0408	1	1	1		
3b	TRUSS HEAD SCREW	4X12, SS	7C32-0412	2	2	2		
4	SQUARE WASHER	BRASS	433537-02	1	1	1		
5	SCREW - GROUNDING	BRASS	433304-02	1	1	1		
6	TOP FRAME	GS	332443-01	1	1	1		
6a	T2 SCREW	4X8	7P31-0408	4	4	4		
7	SIDE FRAME	GS	332465G01	1	1	1		
7a	T2 SCREW	4X8	7P31-0408	2	2	2		
8	BULB HOLDER	PE	328919-01		1	1		
9	SPACER	PE	443545-01		2	1		
10	THUMBSCREW	SS, ABS	415949G09	2	-			
11	BASE COVER	SS	321525G01	1	1	1		
12	TOP INSULATION	PP	215730G01	1	1	1		
13	FRONT INSULATION	PP	215731G01	1	1	1		
14	SIDE PANEL (R)	SS	2A2117G01	1	1	1		
14a	T2 SCREW	4X8, SS	7P32-0408	1	1	1		

MODEL: KM-280MAH-E TITLE: A. ICE CUBER ASSEMBLY								
INDEX NO.	DESCRIPTION	MATERIAL OR MODEL NUMBER	PART NUMBER	REQUIRED NUMBER				
				L-0 M-0	M-2 N-0	N-1		
15	CONTROL BOX COVER	GS	332466-01	1	-			
		GS	3A2476-01		1	1		
15a	T2 SCREW	4X8	7P31-0408	1	1	1		
16	FRONT PANEL	SS	2A2141G01	1	1	1		
16a	TRUSS HEAD SCREW	SS, 4X8	7C32-0408	1	1	1		
17	LOUVER (A)	ABS	1A0547-01	1	1	1		
17a	PUSH RETAINER	-	4A2414-01	3	3	3		
18	-	-	-					
19	TOP PANEL	SS	220465-01	1	1	1		
		(3A1890A01)						
20	GASKET (A)	(3A1890A01)	324859-03	1	1	1		
21	GASKET	PVC	427014-04	2	2	2		
		(3A1890A01)						
22	INSULATION	PE FOAM	438012-01	1	1	1		
		(3A1890A01)						
23	AIR FILTER (A)	-	2A2062G01	2	2	2		
24	DEFLECTOR	SS	4A1951-01		1	1		
25	SHIELD	-	3A1438-01	1	-			
26	POWER SUPPLY CORD	-	452359-02	1	1	1		
27	BUSHING	CEE SR-6P30	450414-01	1	1	1		
28	TRANSFORMER	PY12-19204	446202-01	1	1	1		
28a	PAN HEAD SCREW W/ WASHER (LF)	4x8	7C1230408	4	4	4		
29	TRANS COVER	GS	446359-01	1	1	1		
29a	T2 SCREW	4x8	7P31-0408	2	2	2		
30	BUSHING	OCB-500	428394-02	1	1	1		
31	SIDE PANEL (R) – BASE	SS	2A2147-01	1	1	1		
32	BARRIER – INSULATION	-	4A1167-01	1	1	1		
32a	T2 SCREW	4X8	7P31-0408	2	2	2		

HA

MODEL: KM-280MAH-E TITLE: A. ICE CUBER ASSEMBLY								
INDEX NO.	DESCRIPTION	MATERIAL OR MODEL NUMBER	PART NUMBER	REQUIRED NUMBER				
				L-0	M-2	N-1		
33	GASKET	L=554	4A0808L02	1	1	1		
34	BRACKET (M)	-	3A1434-01	1	-			
35	THUMBSCREW	-	415949G04	2	-			
		-	415949G09		2	2		
36	BIN SWITCH	-	4A2430-01	1	-			
37	CABLE TIE MOUNT	-	437618-01		1	1		

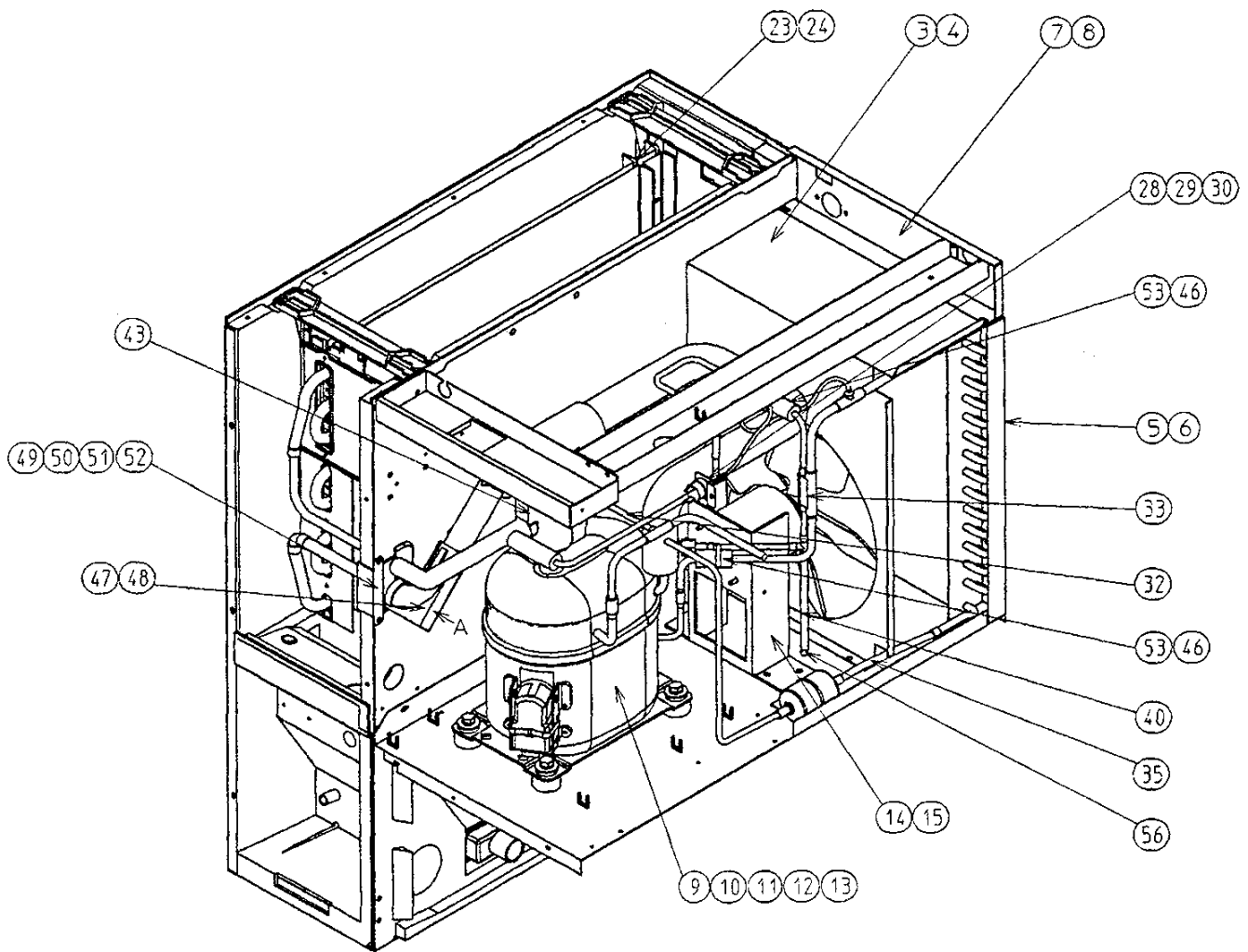


HA

KM-280MAH-E

B. REFRIGERATION CIRCUIT (1/2)

L-0, M-0, M-2, N-0, N-1

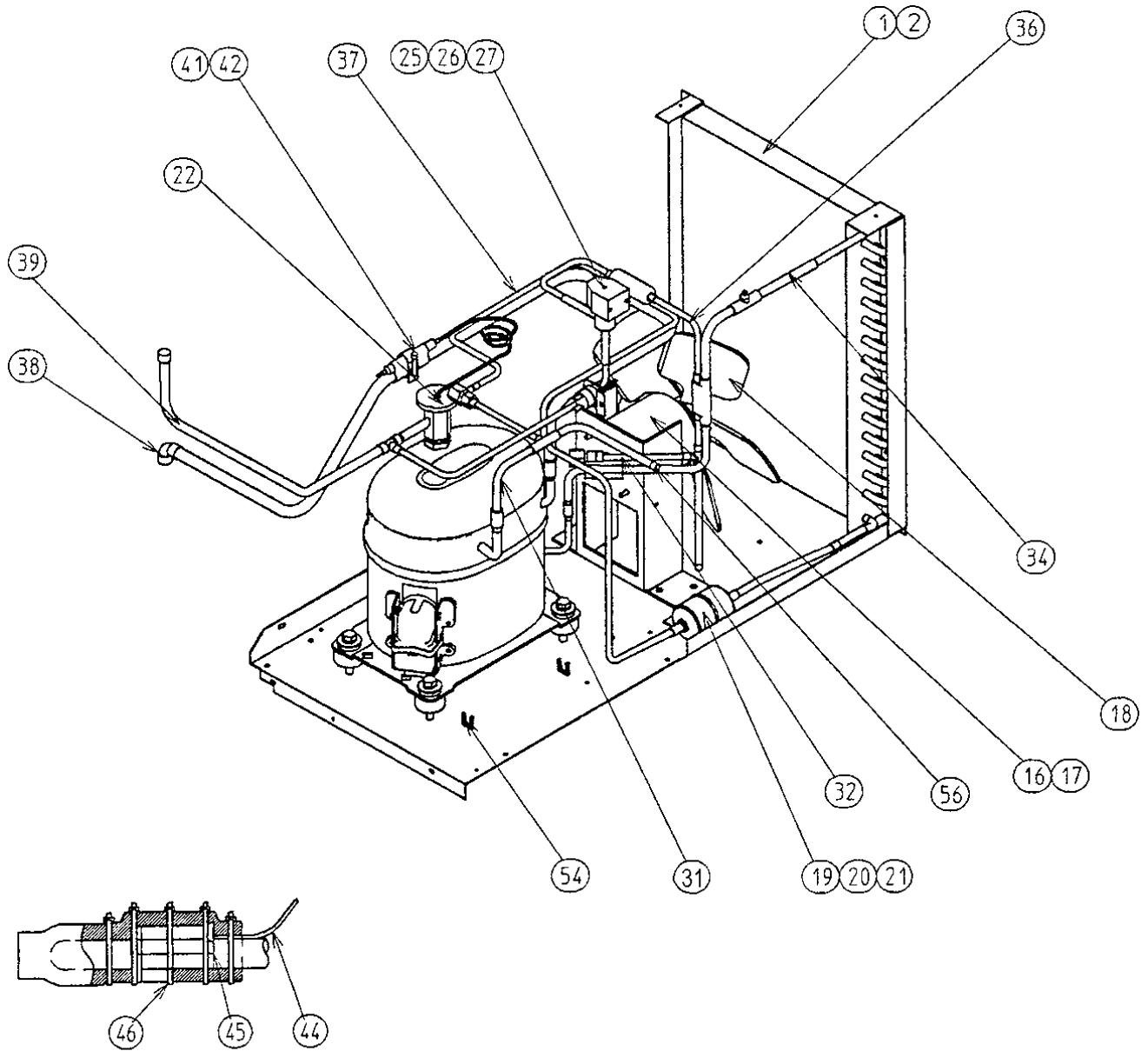


HA

KM-280MAH-E

B. REFRIGERATION CIRCUIT (2/2)

L-0, M-0, M-2, N-0, N-1



THERMISTOR ATTACHMENT

MODEL: KM-280MAH-E TITLE: B. REFRIGERATION CIRCUIT								
INDEX NO.	DESCRIPTION	MATERIAL OR MODEL NUMBER	PART NUMBER	REQUIRED NUMBER				
				L-0 M-0	M-2 N-0	N-1		
1	CONDENSER	-	2A0562-01	1	1	1		
2	T2 SCREW	4x8	7P31-0408	2	2	2		
3	SHROUD	GS	2A0606-01	1	1	1		
4	T2 SCREW	4x8	7P31-0408	2	2	2		
5	BARRIER	GS	433693-04	1	1	1		
6	T2 SCREW	4x8	7P31-0408	2	2	2		
7	REAR PANEL	GS	3A2086-01	1	1	1		
8	T2 SCREW	4x8	7P31-0408	3	3	3		
9	COMPRESSOR	AKA9438ZXC	4A1924-01	1	1	1		
10	BOLT	8x45	437889-01	4	1	1		
11	SPACER	027-0072-02	434404-01	4	4	4		
12	GROMMET	527-0039-04	434403-01	4	4	4		
13	MOTOR PROTECTOR		4A1919-01	1	4	4		
14	FAN MOTOR BRACKET	GS	327179-01	1	1	1		
15	HEX BOLT ASSEMBLY (LF)	5X12, SS	7B0230512	4	4	4		
16	FAN MOTOR	U90B1, 7190-1031	440911-01	1	1	1		
17	SELF-LOCKING NUT	NO. 8-32	7N21I0832	4	4	4		
18	FAN BLADE	AD10CW32	444898-01	1	1	1		
19	DRIER	CW-0325-S	4A1413-01	1	x1			
		-	4A2666-01		o1	1		
20	DRIER BRACKET	GS	445847-01	1	-			
	NYLON TIE	-	8911-0301		1	1		
21	T2 SCREW	4x8	7P31-0408	1	-			
22	EXP. VALVE	AN1/2 SW70	4A1838-02	1	1	1		
23	EVAPORATOR	-	1A0138G01	1	1	1		
24	T2 SCREW	4x16, SS	7P32-0416	4	4	4		
25	VALVE BODY	70	440352-01	1	1	1		
26	COIL VALVE	ABS-25-1-HD-2	440353-01	1	1	1		
27	BOLT	4x6	440353F01	1	1	1		

MODEL: KM-280MAH-E TITLE: B. REFRIGERATION CIRCUIT								
INDEX NO.	DESCRIPTION	MATERIAL OR MODEL NUMBER	PART NUMBER	REQUIRED NUMBER				
				L-0 M-0	M-2 N-0	N-1		
28	PRESSURE SWITCH	ACB-1UB09	433441-07	1	1	1		
29	PRESSURE SWITCH BRACKET	GS	434938-01	1	1	1		
30	T2 SCREW	4x8	7P31-0408	1	1	1		
31	COPPER TUBE ACCESS VALVE	-	3A1422G01	1	1	1		
32	ACCESS VALVE	TCJ-2F20NHDU-1	457729-01	2	2	2		
33	COPPER TUBE (A) - HIGH SIDE	COPPER	2A1435G01	1	1	1		
34	COPPER TUBE (B) - HIGH SIDE	COPPER	4A1823-01	1	1	1		
35	COPPER TUBE (C) - HIGH SIDE	COPPER	4A1819-01	1	1	1		
36	COPPER TUBE (D) - HIGH SIDE	COPPER	3A1238G01	1	1	1		
37	HEAT EXCHANGER	-	2A1478G01	1	-			
		-	2A1478G02		1	1		
38	ELBOW	COPPER	417395-03	1	1	1		
39	COPPER TUBE - HOT GAS	COPPER	2A1425G01	1	1	1		
40	COPPER TUBE (J)	COPPER	4A1815G01	1	1	1		
41	HOLDER / EXP. VALVE – 1/2	SS	3A0112-01	1	1	1		
42	CLAMP	SS	443461-02	1	1	1		
43	EXPANSION VALVE COVER	PE FOAM	4A1168-01	1	1	1		
44	THERMISTOR	-	429006-03	1	1	1		
45	HOLDER - THERMISTOR	COPPER	427430-01	1	1	1		
46	CABLE TIE	CV-200 (PLT-2M)	7920-0010	15	15	15		
47	INSULATION - THERMISTOR (A)	PE FOAM	439368-01	1	1	1		
48	INSULATION - THERMISTOR (B)	PE FOAM	439368-02	1	1	1		
49	RUBBER INSULATION (A)	EPDM	3A1044-01	1	1	1		
50	RUBBER INSULATION (B)	EPDM	3A1045-01	1	1	1		
51	INSULATION HOLDER	SS	4A1550-01	1	1	1		
52	T2 SCREW	4x8, SS	7P32-0408	2	2	2		
53	INSULATION TUBE	L=40	7762-1020	2	2	2		
54	WIRE SADDLE	VWS4238-C	4A0338-01	10	10	10		

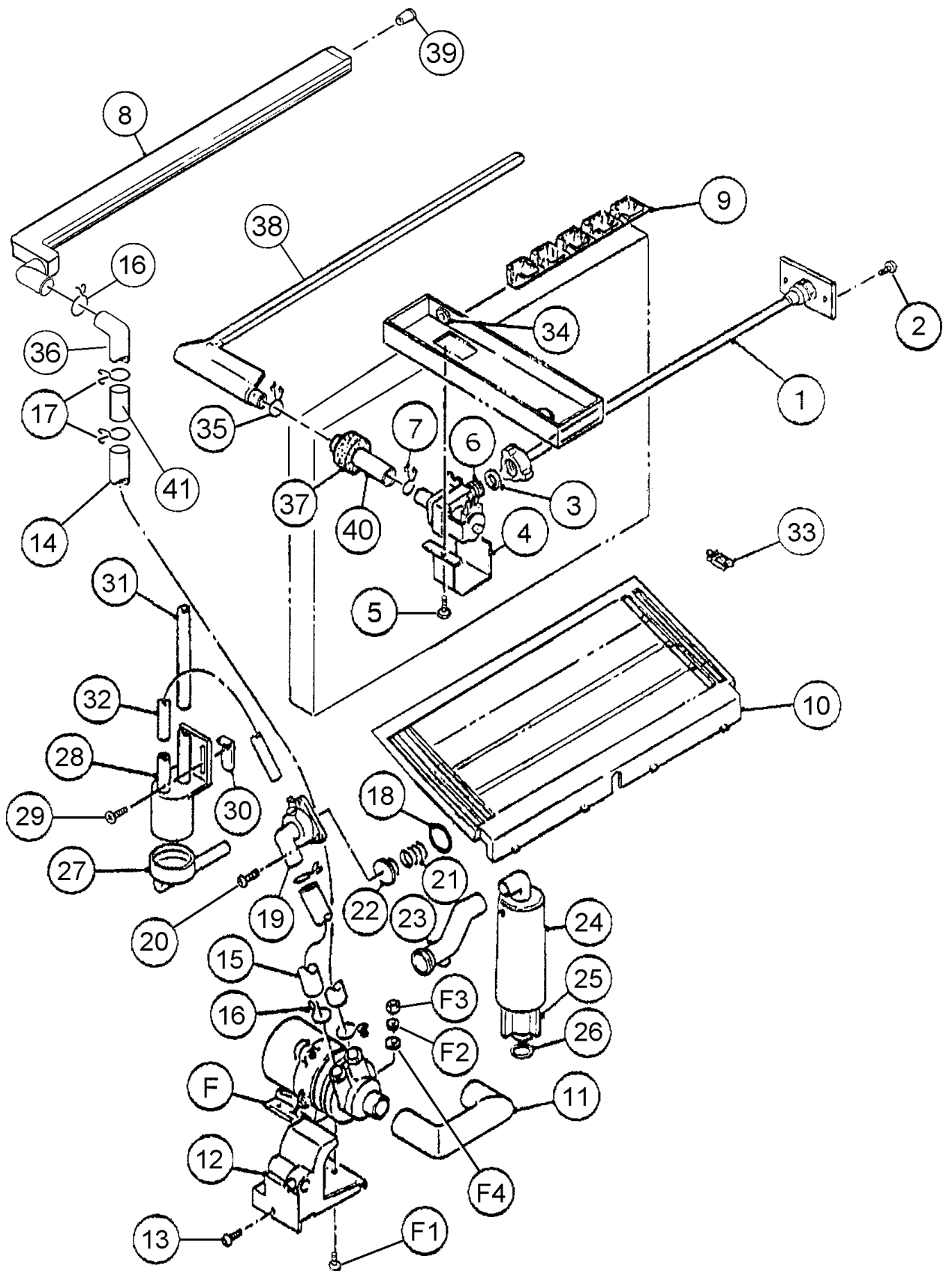
MODEL: KM-280MAH-E TITLE: B. REFRIGERATION CIRCUIT								
INDEX NO.	DESCRIPTION	MATERIAL OR MODEL NUMBER	PART NUMBER	REQUIRED NUMBER				
				L-0	M-2	N-1		
				M-0	N-0			
55	-	-	-					
56	END CAP	RUBBER	4A1413F01	2	2	2		

HA

KM-280MAH-E

C. WATER CIRCUIT

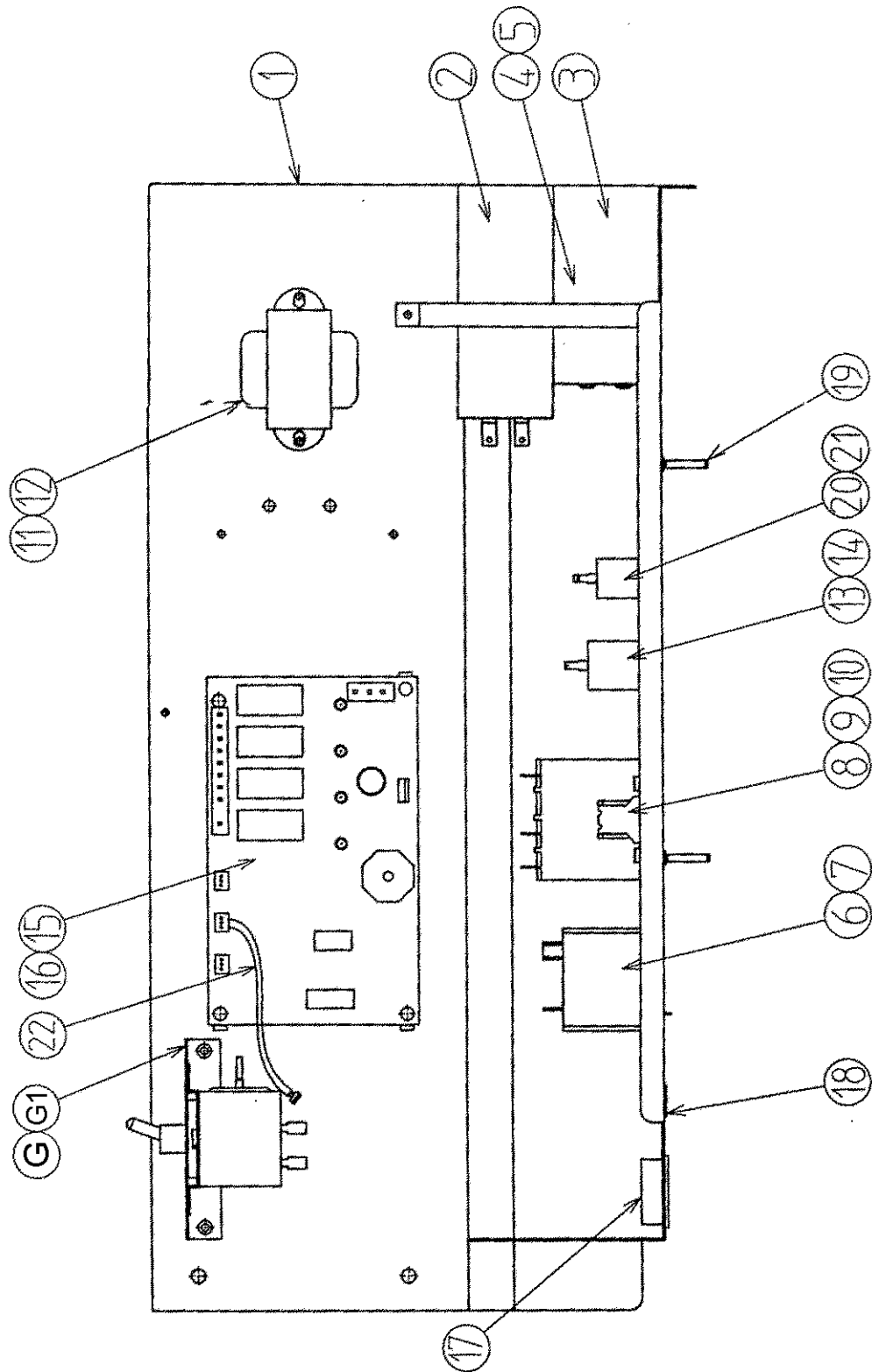
L-0, M-0, M-2, N-0, N-1

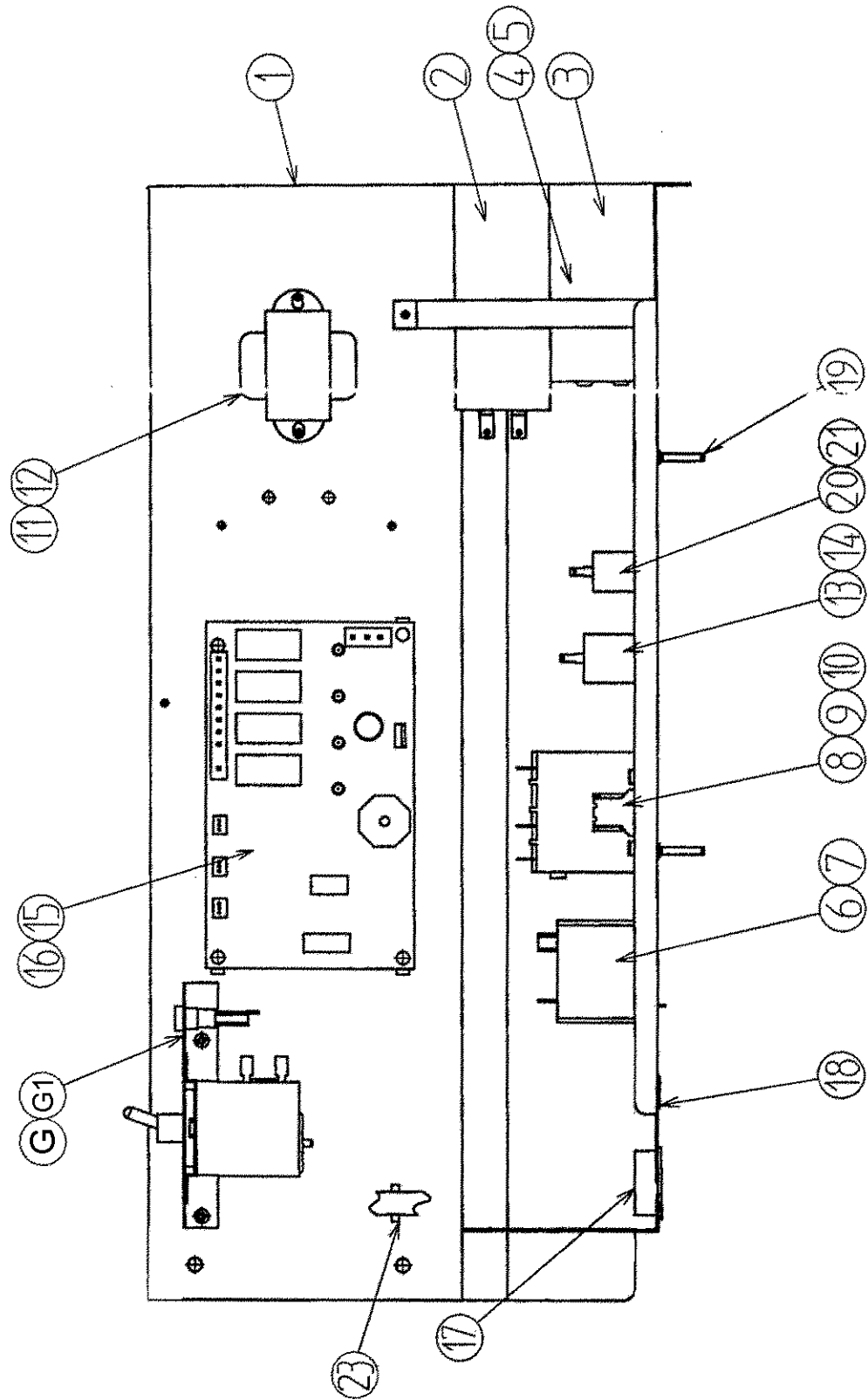


MODEL: KM-280MAH-E TITLE: C. WATER CIRCUIT								
INDEX NO.	DESCRIPTION	MATERIAL OR MODEL NUMBER	PART NUMBER	REQUIRED NUMBER				
				L-0 M-0	M-2 N-0	N-1		
F	PUMP MOTOR ASSEMBLY	HS-0127	3A1092A01	1	1	1		
F1	TRUSS HEAD SCREW	4x16, SS	7C32-0415	1	1	1		
F2	FLAT WASHER	M4, SS	7W22-0400	1	1	1		
F3	SPLIT LOCK WASHER	M4, SS	7L22-0400	1	1	1		
F4	HEX NUT	M4, SS	7N12-0400	1	1	1		
1	WATER SUPPLY PIPE	COPPER	4A0768G04	1	1	1		
2	T2 SCREW	4x8	7P31-0408	2	2	2		
3	RUBBER GASKET	NR	413854-03	1	1	1		
4	WATER VALVE BRACKET	GS	3A0736-01	1	1	1		
5	T2 SCREW	4x8	7P31-0408	1	1	1		
6	WATER VALVE		4A1955-01	1	1	1		
7	HOSE CLAMP	SS, 18MM	427443-05	1	1	1		
8	SPRAY TUBE	PE	1A0222-02	1	1	1		
9	SPRAY GUIDE (A)	PE	208586-01	6	6	6		
10	CUBE GUIDE	ABS	212088-01	1	1	1		
11	SUCTION HOSE	EPDM	4A1380-01	1	1	1		
12	PUMP MOTOR BRACKET	PC	211408-01	1	1	1		
13	FLAT HEAD SCREW	4x12, SS	7F32-0412	1	1	1		
14	VINYL HOSE	L=265	7716-2025	1	1	1		
15	VINYL HOSE	L=110	7716-2025	1	1	1		
16	HOSE CLAMP	SS, 25MM	427443-03	6	4	4		
17	HOSE CLAMP	SS, 23MM	427443-10	2	2	2		
18	"O" RING	1AG35	7611-G035	1	1	1		
19	VALVE HOUSING - DRAIN	ABS	321001-01	1	1	1		
20	T2 SCREW	4x10, SS	7P32-0410	3	3	3		
21	SPRING	SS	3A1361-01	1	1	1		
22	VALVE SHEET	EPDM	433705-01	1	1	1		

MODEL: KM-280MAH-E TITLE: C. WATER CIRCUIT								
INDEX NO.	DESCRIPTION	MATERIAL OR MODEL NUMBER	PART NUMBER	REQUIRED NUMBER				
				L-0 M-0	M-2 N-0	N-1		
23	DRAIN HOSE	DYNAFLEX	433468-01	1	1	1		
24	OVERFLOW CAP	PE	321002-01	1	1	1		
25	OVERFLOW PIPE	ABS	430722-05	1	1	1		
26	"O" RING	EPDM	4A1234-01	1	1	1		
27	CONNECTOR-FLOAT SWITCH	EPDM	425799-01	1	1	1		
28	FLOAT SWITCH	163795	4A0886-01	1	1	1		
29	T2 SCREW	4X12, SS	7P32-0412	2	2	2		
30	FLOAT SWITCH STOP	SS	446358-01	1	1	1		
31	SILICONE HOSE	L=140	7730I3812	1	1	1		
32	SILICONE HOSE	L=140	7730I3896	1	1	1		
33	WIRE SADDLE	VWS4238-C	4A0388-02	4	4	4		
34	BUSHING	OCB-750	428394-01	1	1	1		
35	HOSE CLAMP	SS, 20MM	427443-06	1	1	1		
36	RUBBER HOSE(C)	DYNAFLEX	4A1551-03	1	1	1		
37	INSULATION (E)	PE FOAM	4A0392-01	1	1	1		
38	WATER SUPPLY TUBE	PE	2A0560-01	1	1	1		
39	PLUG	EPDM	4A0176-01	1	1	1		
40	CONNECTING PIPE	DYNAFLEX	4A1142-01	1	1	1		
41	INSERT COUPLING	3/4 "	4A0632-01	1	1	1		







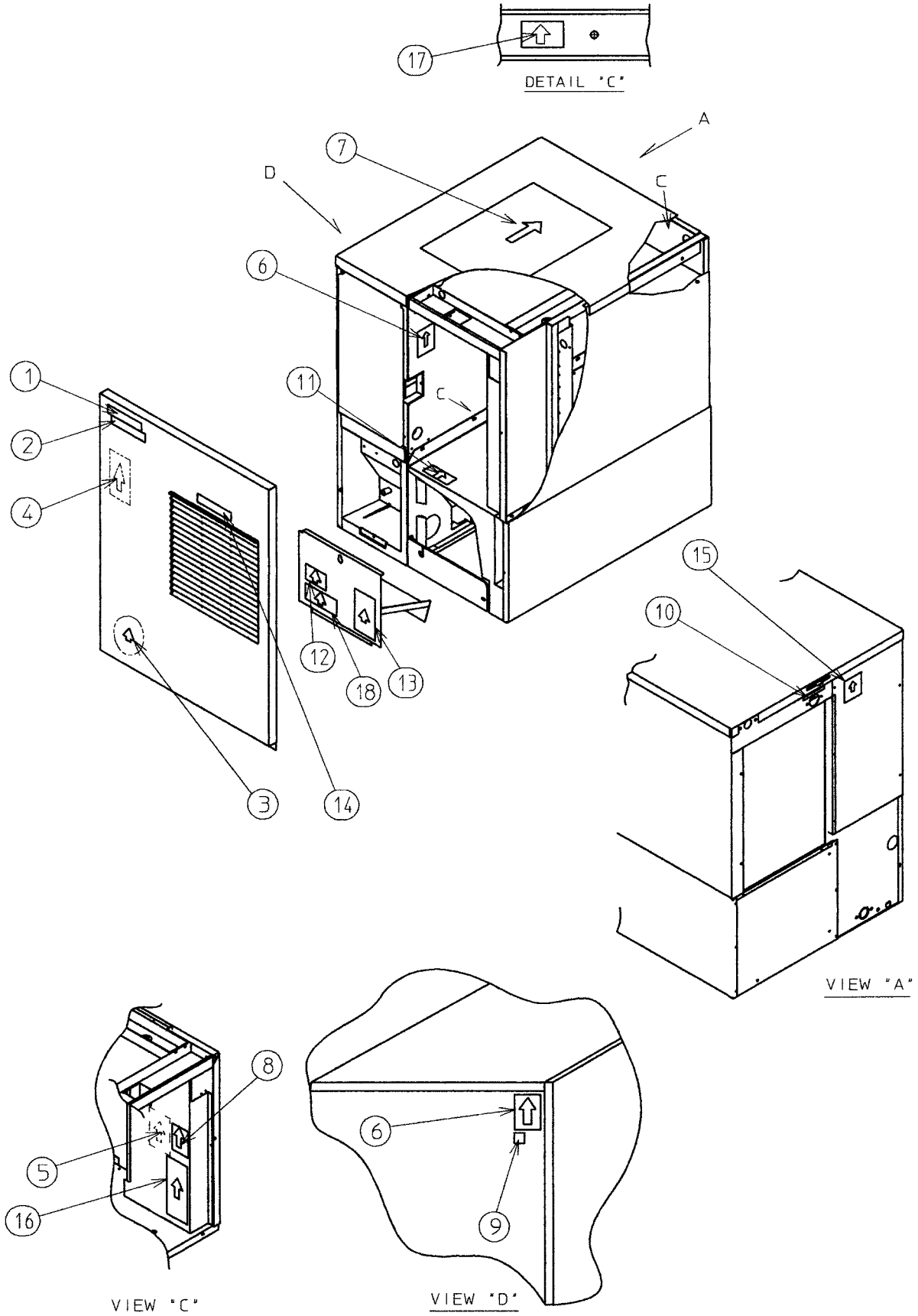
MODEL: KM-280MAH-E TITLE: D. CONTROL BOX ASSEMBLY								
INDEX NO.	DESCRIPTION	MATERIAL OR MODEL NUMBER	PART NUMBER	REQUIRED NUMBER				
				L-0	M-0	M-2 N-0	N-1	
G	CONTROL ASSEMBLY	-	4A2513A02	1	1	-		
		-	4A2911A02			1	1	
G2	T2 SCREW	4X8	7P31-0408	2	2	2	2	
1	CONTROL BOX	-	2A1851-01	1	1	1	1	
2	CAPACITOR - RUN	15MFD 370V	3A2005-08	1	1	1	1	
3	CAPACITOR – STARTING	72-88 MFD, 330 VAC	3A1414-01	1	1	1	1	
4	STRAP	GS	4A2262-02	1	1	1	1	
5	T2 SCREW	4X8	7P31-0408	1	1	1	1	
6	STARTER	GE3ARR3CT3AN5	4A1107-06	1	1	1	1	
7	T2 SCREW	4X8	7P31-0408	1	1	1	1	
8	MAGNETIC CONTACTOR	VC-20	428393-01	1	1	1	1	
9	BRACKET	-	428393F01	1	1	1	1	
10	T2 SCREW	4X8	7P31-0408	2	2	2	2	
11	TRANSFORMER	26D285H	3A0172-01	1	1	1	1	
12	T2 SCREW	4X8	7P31-0408	2	2	2	2	
13	CAPACITOR	250 VAC, 5.5 MFD	4A2128-03	1	1	1	1	
14	T2 SCREW	4X10	7P31-0410	1	1	1	1	
15	CONTROLLER BOARD	HOS-001A	2A1410-01	1	1	1	1	
16	BOARD SUPPORT	CBLS37-M	4A0336-03	4	4	4	4	
17	BUSHING	SB-1093-15	420470-03	1	1	1	1	
18	BUSHING	OCB-500	428394-02	1	1	1	1	
19	WIRE SADDLE	VWS4238-C	4A0338-02	2	2	x2		
	CLAMP	-	4A2338-01			o2	2	
20	CAPACITOR	250 VAC, 2.5 MFD	4A2128-05	1	1	1	1	
21	T2 SCREW	4X10	7P31-0410	1	1	1	1	
22	RESISTOR WIRE HARNESS	-	4A2200G01	1	1	-		
23	FUSE	-	4A0893-07			1	1	

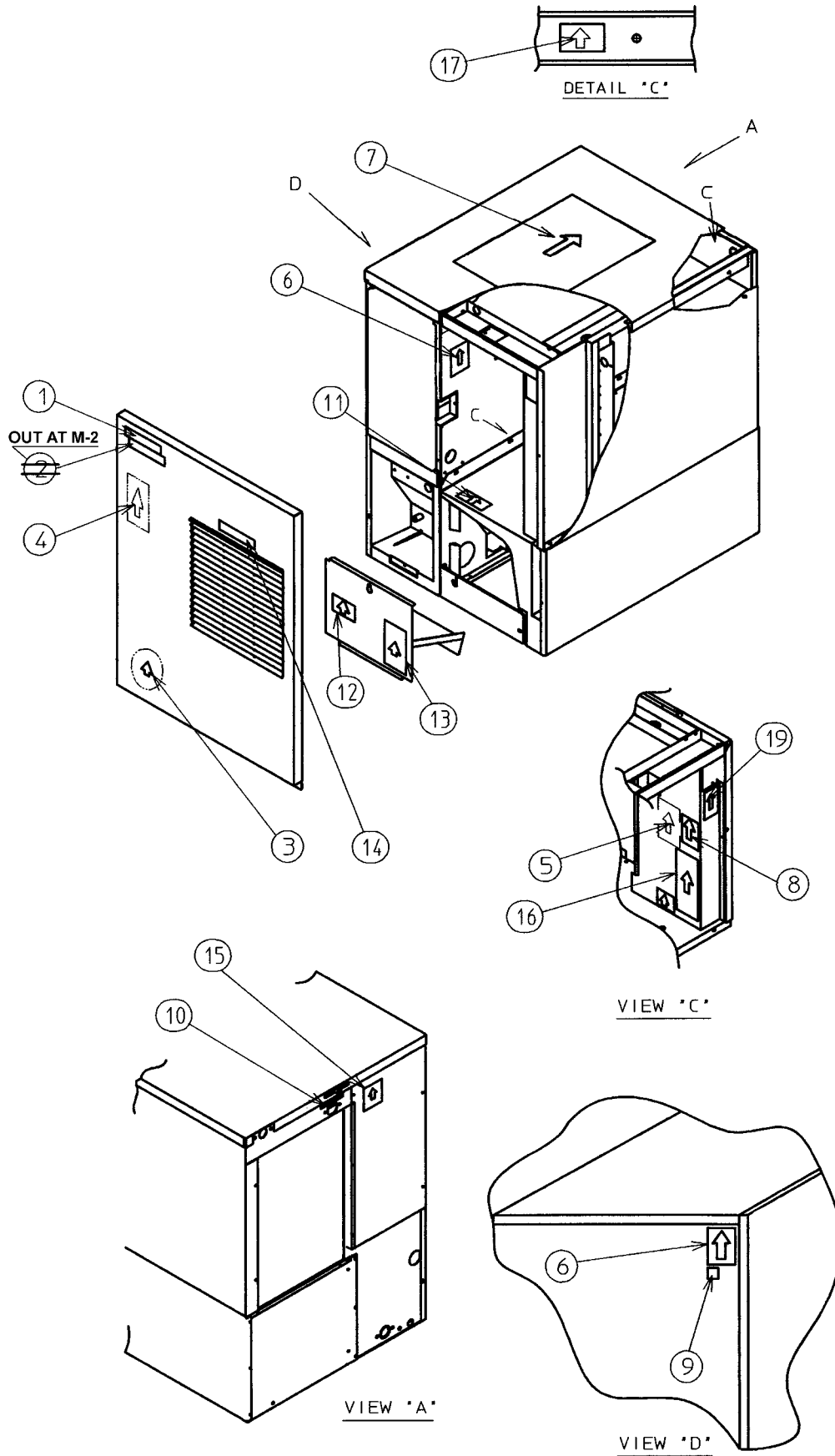
HA

KM-280MAH-E

E. LABEL LOCATION

L-0, M-0





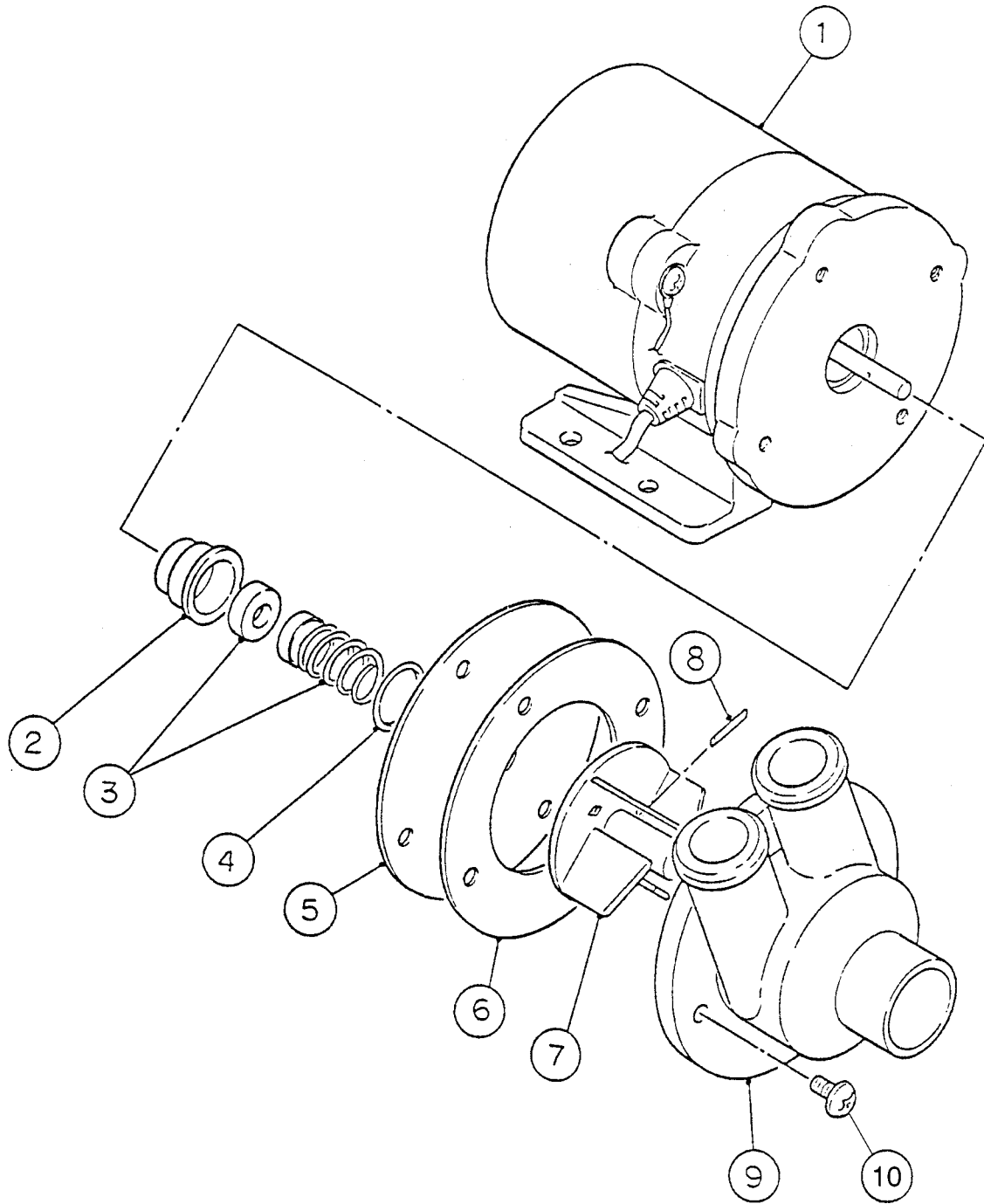
MODEL: KM-280MAH-E TITLE: E. LABEL LOCATION								
INDEX NO.	DESCRIPTION	MATERIAL OR MODEL NUMBER	PART NUMBER	REQUIRED NUMBER				
				L-0	M-0	M-2	N-0 N-1	
1	EMBLEM	PETP FILM	4A0560-01	1	1	1	1	
2	MODEL NUMBER LABEL	PETP FILM	4A2356-47	1	1	-		
3	LABEL – PENGUIN – HA (R)	PETP FILM	4A0526-01	1	1	1	1	
4	MAINTENANCE LABEL	PVC FILM	3A0725-01	1	1	1	1	
5	WIRING LABEL	PVC FILM	3A2076-01	1	1	-		
		PVC FILM	3A2414-01			1	1	
6	NAMEPLATE	PES FILM	4A2573-01	2	2	x2		
		PES FILM	4A2622-04			o2	2	
7	INSTRUCTION SHEET	PAPER	2A2143-01	1	1	1	1	
8	MANUAL LABEL	PVC FILM	4A2530-01	1	1	-		
		PVC FILM	446564-01			1	1	
9	LABEL-CE	PES FILM	450668-01	1	1	1	1	
10	WATER SUPPLY LABEL	PVC FILM	4A1158-01	1	1	1	1	
11	LABEL – R404A	PES FILM	4A0960-01	1	1	1	1	
12	CAUTION LABEL (F)	PVC FILM	439146-01	1	1	1	1	
13	CAUTION LABEL (H)	PVC FILM	439148-01	1	1	1	1	
14	LABEL – AIR FILTER	PETP FILM	426177-01	1	1	1	1	
15	INSTRUCTION LABEL	PVC FILM	444575-01	1	1	1	1	
16	LABEL – CONTROL BOARD	PVC FILM	3A2220-01	1	1	1	1	
17	LABEL – GROUNDING (B)	PES FILM	450452-02	1	1	1	1	
18	LABEL – BIN CONTROL	-	4A2528-01	1	1	-		
19	LABEL – FUSE	-	4A2817-01			1	1	

HA

KM-280MAH-E

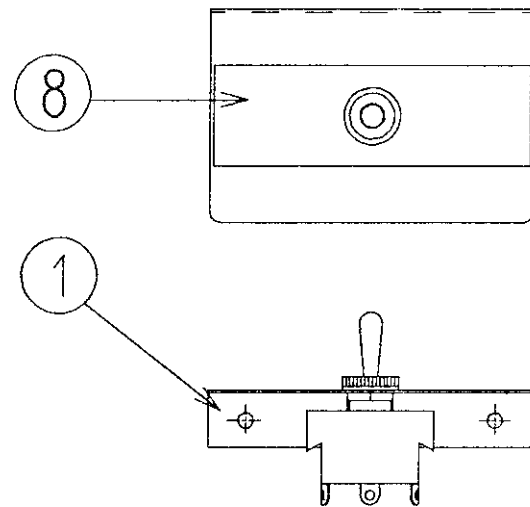
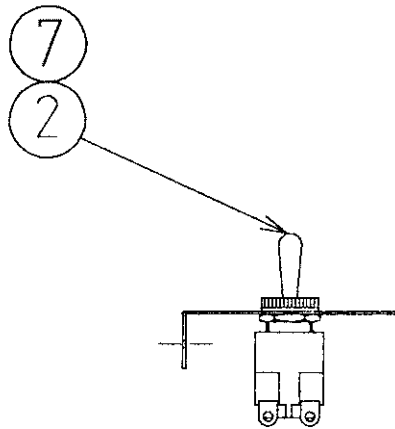
F. PUMP MOTOR ASSEMBLY

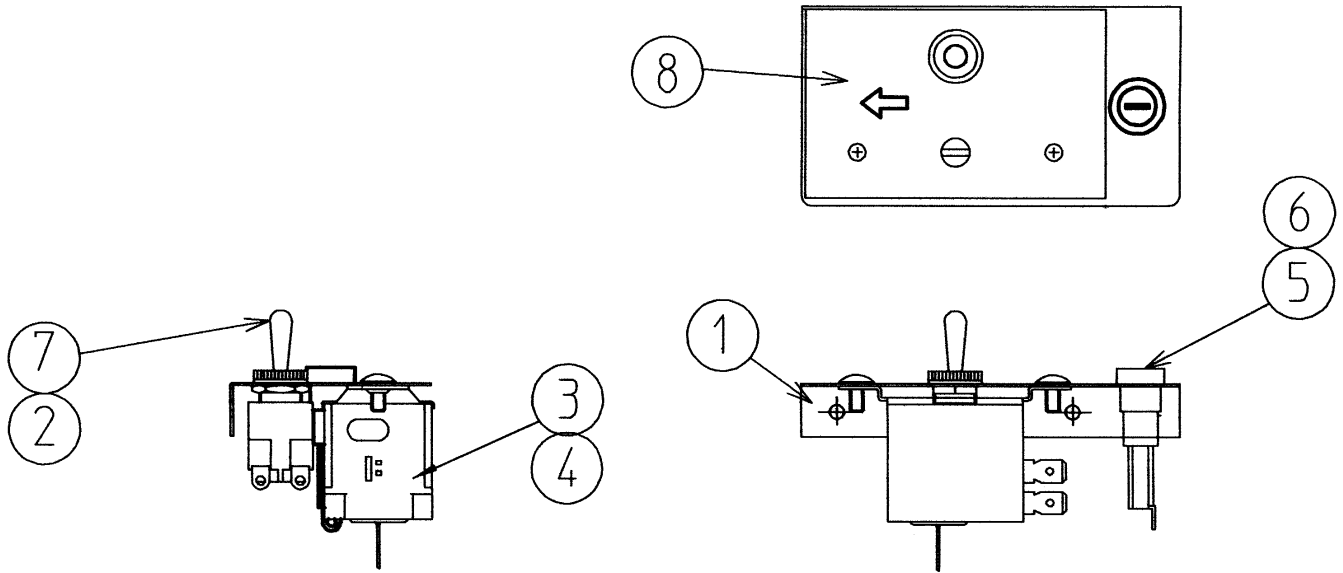
L-0, M-0, M-2, N-0, N-1



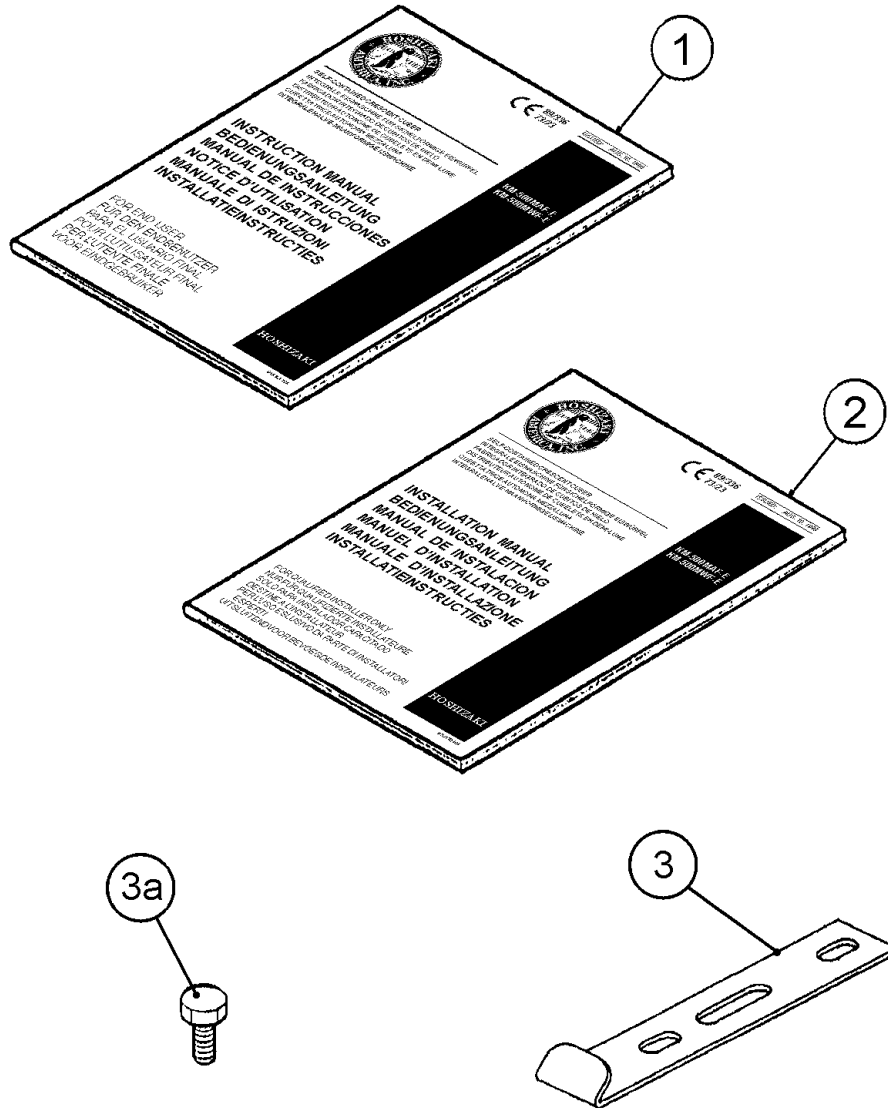
MODEL: KM-280MAH-E		TITLE: F. PUMP MOTOR ASSEMBLY						
INDEX NO.	DESCRIPTION	MATERIAL OR MODEL NUMBER	PART NUMBER	REQUIRED NUMBER				
				L-0	M-0	M-2	N-0 N-1	
1	PUMP MOTOR	AP-TA4(H) 120V	2U0095-01	1	1	1	1	
2	RETAINER	SS	418584-01	1	1	1	1	
3	MECHANICAL SEAL (B)	H5-PS9, 5	415817-01	1	1	1	1	
4	"O" RING	1AP18	7611-P018	1	1	1	1	
5	PLATE – PUMP	SS	403013-01	1	1	1	1	
6	PUMP GASKET	NR	403014-01	1	1	1	1	
7	IMPELLER	ABS	417082-01	1	1	1	1	
8	PIN	SS	414102-01	1	1	1	1	
9	PUMP HOUSING	ABS	211409-02	1	1	1	1	
9a	PAN HEAD SCREW	4X20, SS	7C12-0420	4	4	4	4	
9b	TOOTH WASHER	SS, 4 MM	7R22-0400	2	2	2	2	
10	PLUG HOUSING	3191-03P	412832-06	1	1	1	1	







MODEL: KM-280MAH-E, MWF-E TITLE: G. CONTROL ASSEMBLY								
INDEX NO.	DESCRIPTION	MATERIAL OR MODEL NUMBER	PART NUMBER	REQUIRED NUMBER				
				L-0	M-0	M-2	N-0 N-1	
1	CONTROL BOX (C)	-	4A2517-01	1	1	-		
		-	4A2816-01			1	1	
2	TOGGLE SWITCH	-	443119-01	1	1	1	1	
3	THERMOSTAT	YTB-105B	4A2879-01			1	1	
4	TRUSS HEAD SCREW	4X8	7C31-0408			2	2	
5	FUSE HOLDER	HTB921	4A0892-01			1	1	
6	FUSE	AGC-10	4A0893-07			1	1	
7	TOGGLE SWITCH	2GM91-68	4A2436-01	1	1	1	1	
8	CONTROL LABEL	-	4A2509-01	1	1	-		
		-	4A2909-01			1	1	



MODEL: KM-280MAH-E TITLE: H. ACCESSORIES & PACKAGING								
INDEX NO.	DESCRIPTION	MATERIAL OR MODEL NUMBER	PART NUMBER	REQUIRED NUMBER				
				L-0	M-0	M-2 N-0	N-1	
1	INSTRUCTION MANUAL	PAPER	91A1NG10A	1	1	1	1	
2	INSTALLATION MANUAL	PAPER	91A1NG11A	1	1	1	1	
3	UNIVERSAL BRACE	GS	4A0363-01	2	2	2	2	
3a	HEX HEAD BOLT	5X12, SUS	7B02-0512	4	4	4	4	
	<b>PACKAGING (available only on models currently in production)</b>	-	<b>2A2145A04</b>					
1	PALLET	-	2A2503-01	1	1	1	1	
2	TRAY	-	2A2173-02	1	1	1	1	
3	CORNER POST	-	3A0788-10	2	2	2	2	
4	CARTON	-	2A2125-03	1	1	1	1	
5	CORNER POST	-	3A0788-03	4	4	4	4	
6	SIDE PROTECTOR	-	4A2304-02	1	1	1	1	
7	SIDE PROTECTOR	-	4A2304-01	3	3	3	3	
8	WOOD BLOCK – A	-	4A2794-01	3	3	3	3	
9	WOOD BLOCK – B	-	4A2794-02	1	1	1	1	