



**HOSHIZAKI
MODULAR CRESCENT CUBER**

**MODEL
KM-250MAE
KM-250MWE**

PARTS LIST

FINAL

KM-250MAE

C-1 Sept., 1993
D-0 May, 1994
E-0 Dec., 1994
E-1 May, 1995
F-0 Jan., 1996

KM-250MWE

C-1 Sept., 1993
D-0 April, 1994
E-0 Dec., 1994
E-1 May, 1995
F-0 Dec., 1995

MATERIAL ABBREVIATIONS

ALUMINUM

AL = Aluminum

COPPER

CU = Copper

PLASTIC

ABS = Acrylonitrile-butadiene-styrene

AC = Polyacetal

EVA = Ethylene vinyl acetate

PA = Polyamide = Nylon

PC = Polycarbonate

PE = Polyethylene

PES = Polyester

PETP = Polyethylene terephthalate = Tetlon

PP = Polypropylene

PS = Polystyrene

PIFE = Polytetrafluoroethylene = Teflon

PUR = Polyurethane

PVC = Polyvinyl chloride

RUBBER

VN = Vinyl Nitrile

EPDM = EP rubber

NBR = Nitrile butadiene rubber

NR = Natural rubber

NP = Neoprene

SI.R = Silicone rubber

SY.R = Synthetic rubber

EPH = Epichlorohydrin

STEEL

G.S = Galvanized steel

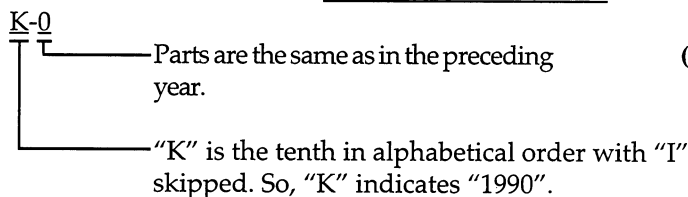
S.S = Stainless steel

PS = Plated steel

PAS = Primed steel

AUXILIARY CODE

Ex.1

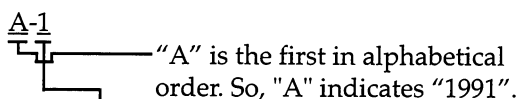


(Note) - = Part deleted.

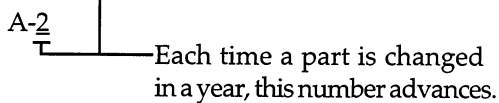
x = Part deleted and replaced by "o" part.

o = New part for "x" in the same auxiliary code.

Ex.2

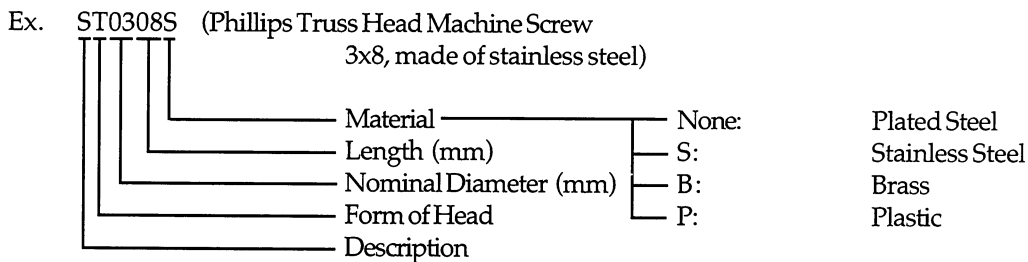


Ex.3



FASTENER ABBREVIATION LIST

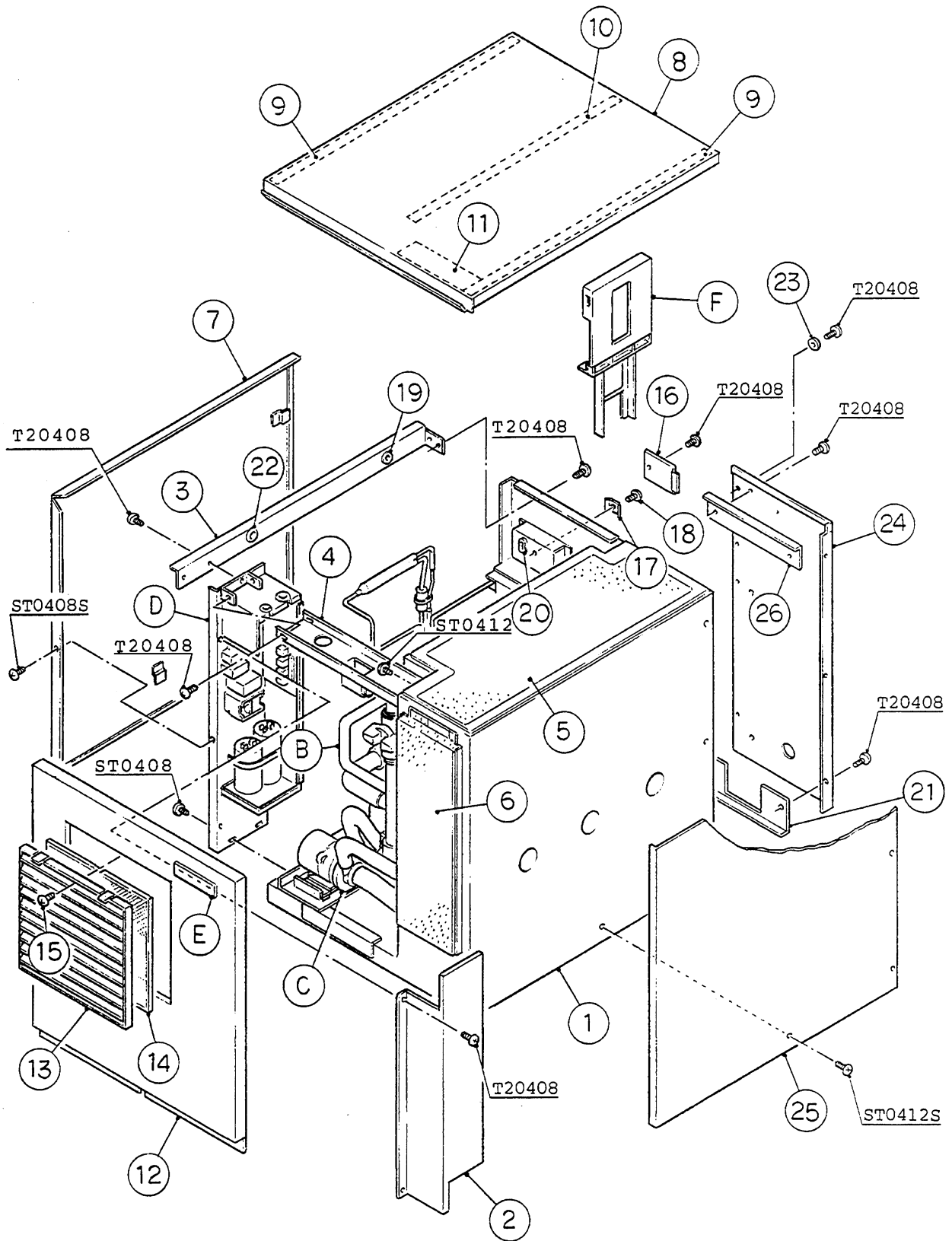
ST	Phillips Truss Machine Screw
SP	Phillips Pan Head Machine Screw
SF	Phillips Flat Head Machine Screw
SS	Phillips Pan Head Machine Screw with Split Lock Washer
SW	Phillips Pan Head Machine Screw with Split Lock Washer and Flat Washer
T1	Phillips Truss Head Tapping Screw (Correspond to Type A)
T2	Phillips Truss Head Tapping Screw (Correspond to Type B)
T3	Phillips Truss Head Tapping Screw (Correspond to Type C)
FT	Phillips Truss Head Tapping Screw (Special)
BH	Hexagon Head Bolt
BC	Socket Head Cap Screw
BS	Hexagon Bolt with Split Washer
BW	Hexagon Bolt with Split Washer and Flat Washer
BF	Hexagon Flange Bolt
BR	Cross-Recessed Hexagon Head Bolt
BRW	Cross-Recessed Hexagon Head Bolt with Split Lock Washer and Flat Washer
WL	Split Lock Washer
WT	External Tooth Washer
WF	Flat Washer
WS	Spring Washer
NH	Hexagon Nut
NF	Hexagon Flange Nut
NC	Hexagon Cap Nut
NS	Square Nut
NW	Wing Nut



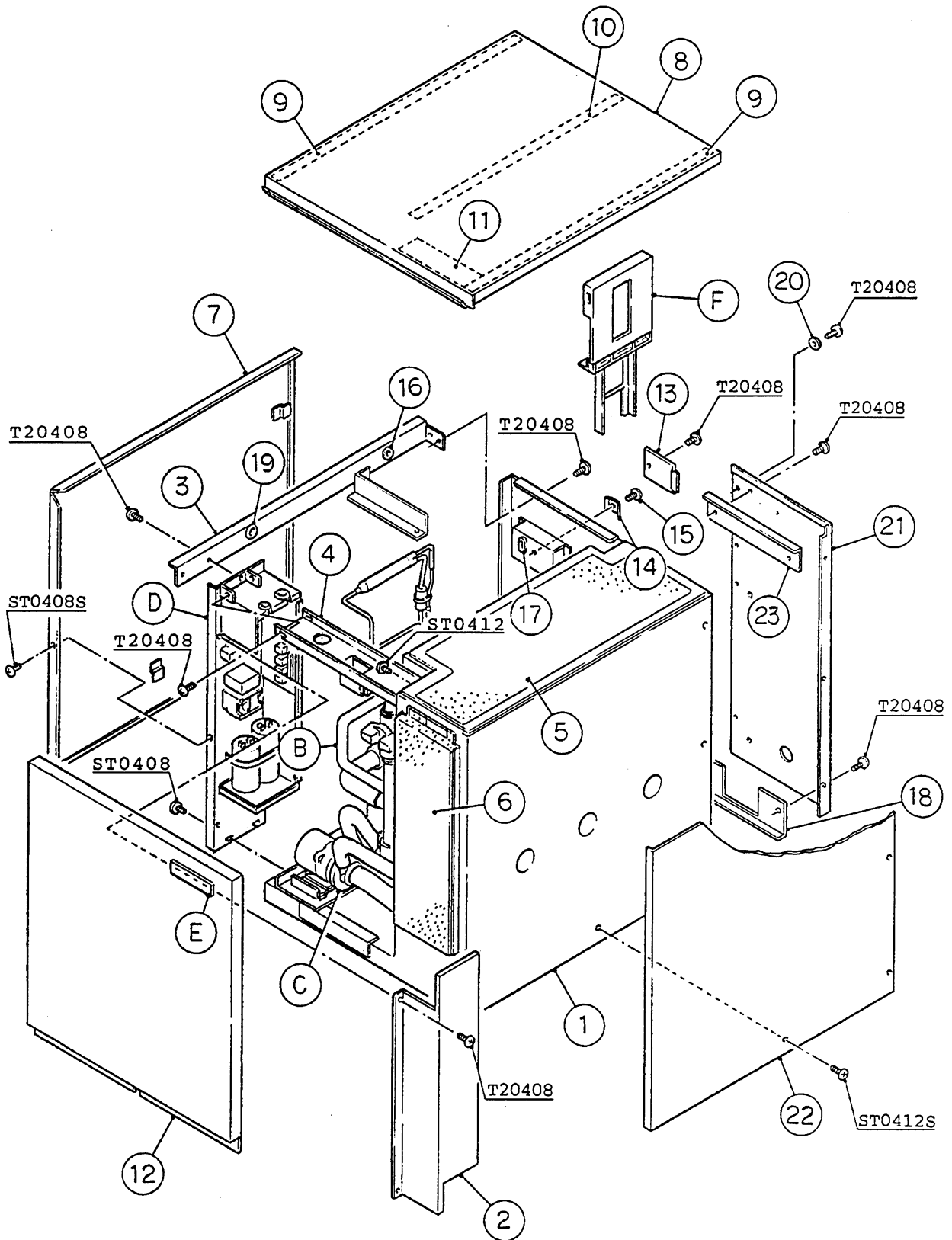
(Note) Second character is numerical except toe list.

Ex. S1, S2, B3 etc.

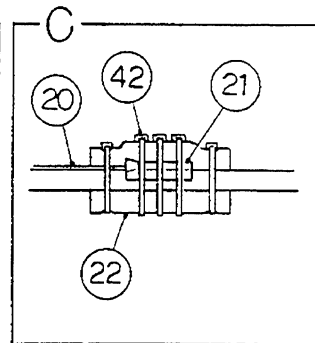
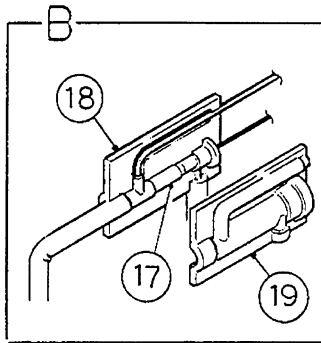
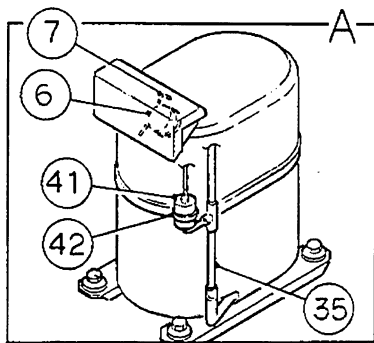
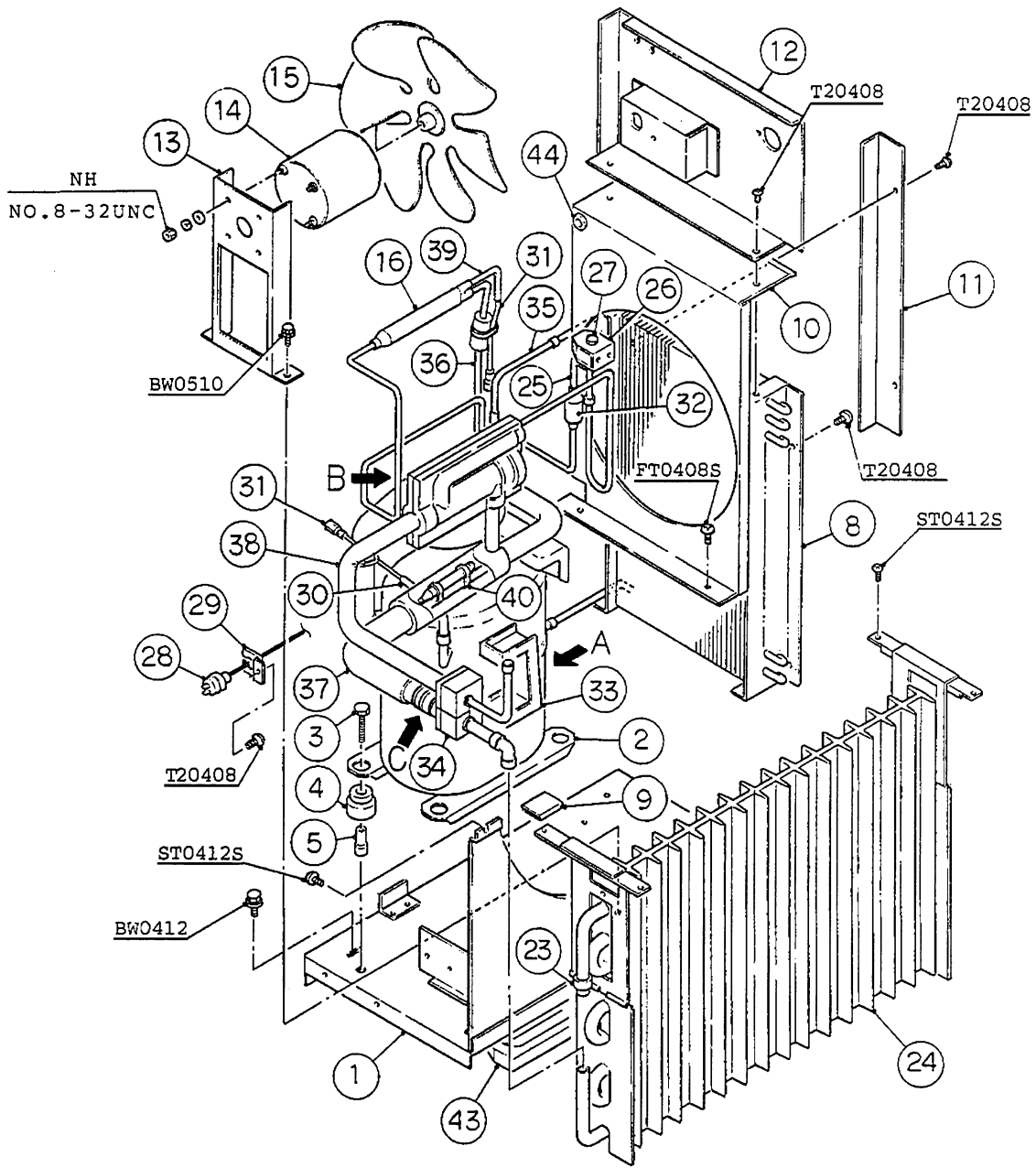
And abbreviations and names are shown under the illustration.

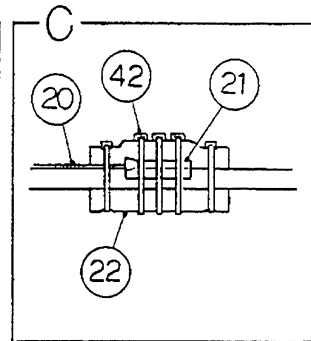
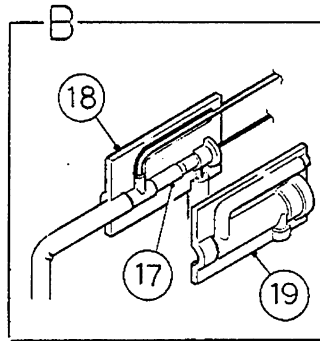
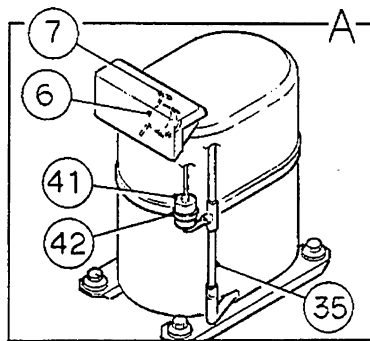
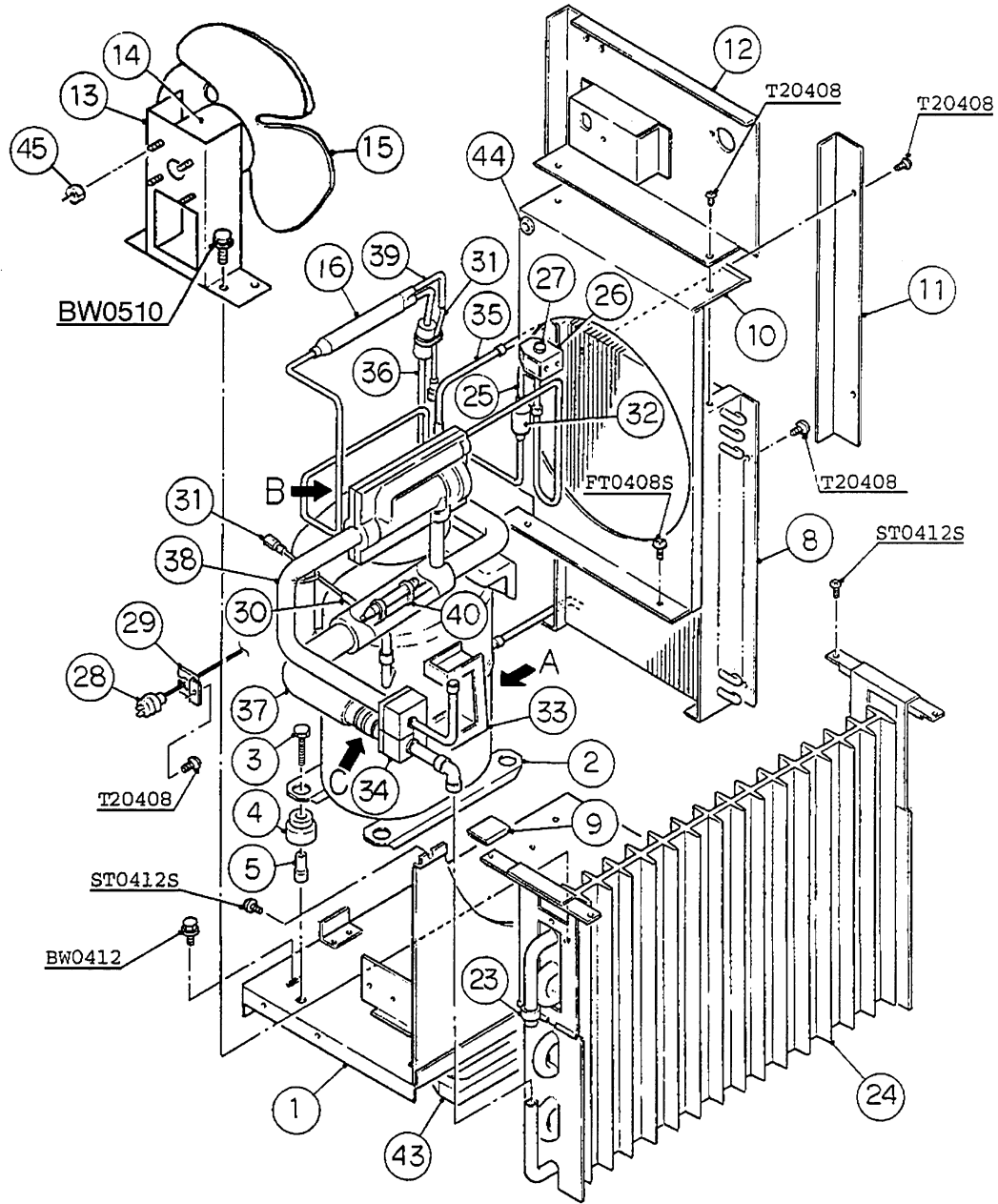


MODEL: KM-250MAE TITLE: A. ICE CUBER ASSEMBLY								
INDEX NO.	DESCRIPTION	MATERIAL OR MODEL NUMBER	PART NUMBER	REQUIRED NUMBER				
				C-1	D-0	E-0	E-1	F-0
B	REFRIGERATION CIRCUIT	-	106052A04	1	1	1	-	
		-	106052A05				1	1
C	WATER CIRCUIT	-	105194A02	1	1	1	-	
		-	105194A03				1	1
D	CONTROL. BOX ASSEMBLY	-	218243A01	1	1	1	1	1
E	LABEL LOCATION	-	332149A01	1	1	1	1	1
F	BULB HOLDER	-	326242A01	1	1	1	1	1
1	BODY ASSEMBLY	-	216713G02	1	1	1	1	1
2	CONTROL. BOX COVER	G.S	329538-01	1	1	1	1	1
3	SIDE FRAME	G.S	329542G01	1	1	1	1	1
4	TOP FRAME	G.S	329540G01	1	1	1	1	1
5	TOP INSULATION	-	326229G01	1	1	1	1	1
6	FRONT INSULATION	-	327604G02	1	1	1	1	1
7	SIDE PANEL (L)	G.S	218092G01	1	1	1	1	1
8	TOP PANEL	S.S, (329571A01)	218094-01	1	1	1	1	1
9	GASKET	PVC	427014-04	2	2	2	2	2
10	GASKET (A)	PVC	427014-05	1	1	1	1	1
11	INSULATION	PE FOAM	439646-01	1	1	1	1	1
12	FRONT PANEL	G.S	218272G01	1	1	1	1	1
13	LOUVER (B)	ABS	103121-03	1	1	1	1	1
14	AIR FILTER (B)	ABS	208283G03	1	1	1	1	1
15	TAPPING SCREW - BLACK	STEEL, 4 x 8	433954-01	1	1	1	1	1
16	JUNCTION BOX COVER	G.S	433410-01	1	1	1	1	1
17	SQUARE WASHER	BRASS	433537-02	1	1	1	1	1
18	SCREW - GROUNDING	BRASS	433304-02	1	1	1	1	1
19	BUSHING	OCB-750	428394-01	1	1	1	1	1
20	BUSHING	SR-30-1	420472-03	1	1	1	1	1
21	PLATE (B)	S.S	4A0171-01	1	1	1	1	1
22	BUSHING	SB-625-8	420470-01	1	1	1	1	1



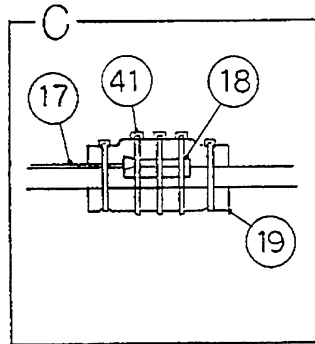
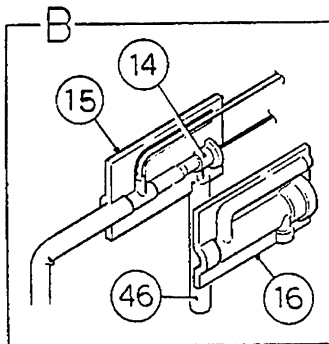
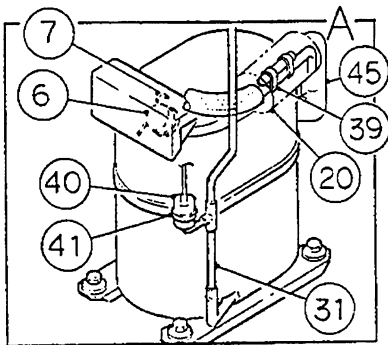
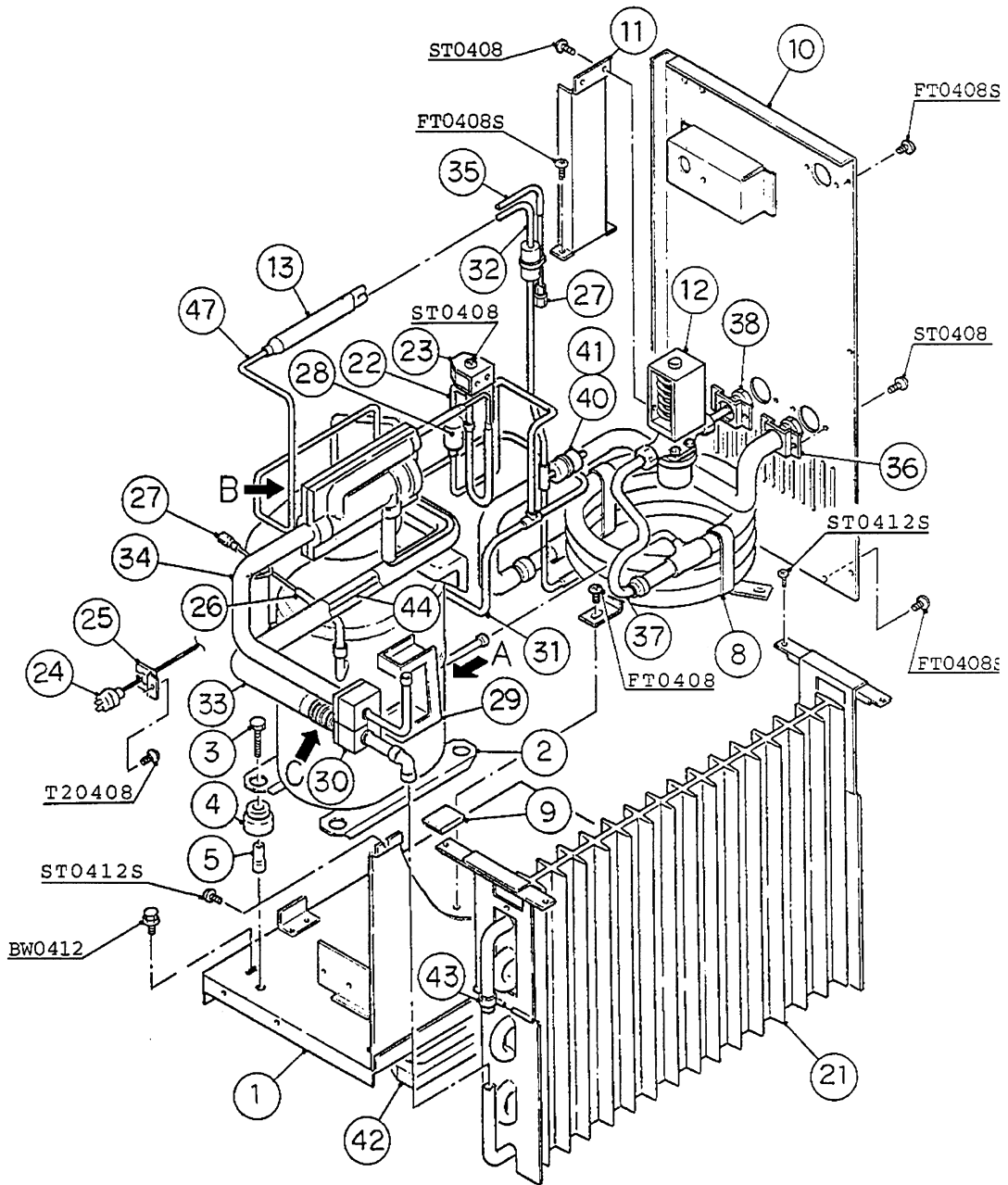
MODEL: KM-250MWE		TITLE: A. ICE CUBER ASSEMBLY						
INDEX NO.	DESCRIPTION	MATERIAL OR MODEL NUMBER	PART NUMBER	REQUIRED NUMBER				
				C-1	D-0	E-0	E-1	F-0
B	REFRIGERATION CIRCUIT	-	106779A02	1	1	1	-	
		-	106779A03				1	1
C	WATER CIRCUIT	-	105194A02	1	1	1	-	
		-	105194A03				1	1
D	CONTROL. BOX ASSEMBLY	-	218243A02	1	1	1	1	1
E	LABEL LOCATION	-	332150A01	1	1	1	1	1
F	BULB HOLDER	-	326242A01	1	1	1	1	1
1	BODY ASSEMBLY	-	216713G02	1	1	1	1	1
2	CONTROL. BOX COVER	G.S	329538-01	1	1	1	1	1
3	SIDE FRAME	G.S	329542G02	1	1	1	1	1
4	TOP FRAME	G.S	329540G01	1	1	1	1	1
5	TOP INSULATION	-	326229G01	1	1	1	1	1
6	FRONT INSULATION	-	327604G02	1	1	1	1	1
7	SIDE PANEL (L)	G.S	218092G01	1	1	1	1	1
8	TOP PANEL (A)	S.S, (329571A01)	218094-01	1	1	1	1	1
9	GASKET	PVC	427014-04	2	2	2	2	2
10	GASKET (A)	PVC	427014-05	1	1	1	1	1
11	INSULATION	PE FOAM	439646-01	1	1	1	1	1
12	FRONT PANEL	G.S	218091G01	1	1	1	1	1
13	JUNCTION BOX COVER	G.S	433410-01	1	1	1	1	1
14	SQUARE WASHER	BRASS	433537-02	1	1	1	1	1
15	SCREW - GROUNDING	BRASS	433304-02	1	1	1	1	1
16	BUSHING	OCB-750	428394-01	1	1	1	1	1
17	BUSHING	SR-30-1	420472-03	1	1	1	1	1
18	PLATE (B)	S.S	4A0171-01	1	1	1	1	1
19	BUSHING	SB-625-8	420470-01	1	1	1	1	1
20	WASHER	G.S	443696-01	3	x3			
		PS	4A0655-01		o3	3	3	3
21	REAR PANEL (R)	G.S	3A0175-01	1	1	1	1	1
22	SIDE PANEL (R)	G.S	218093-01	1	1	1	1	1
23	PLATE	S.S	329537-01	1	1	1	1	1

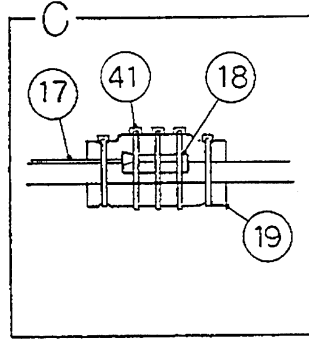
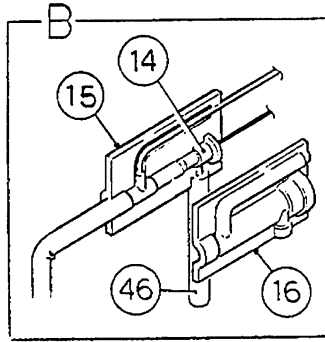
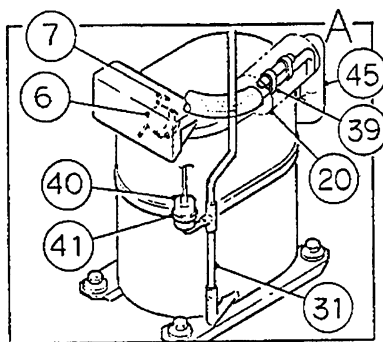
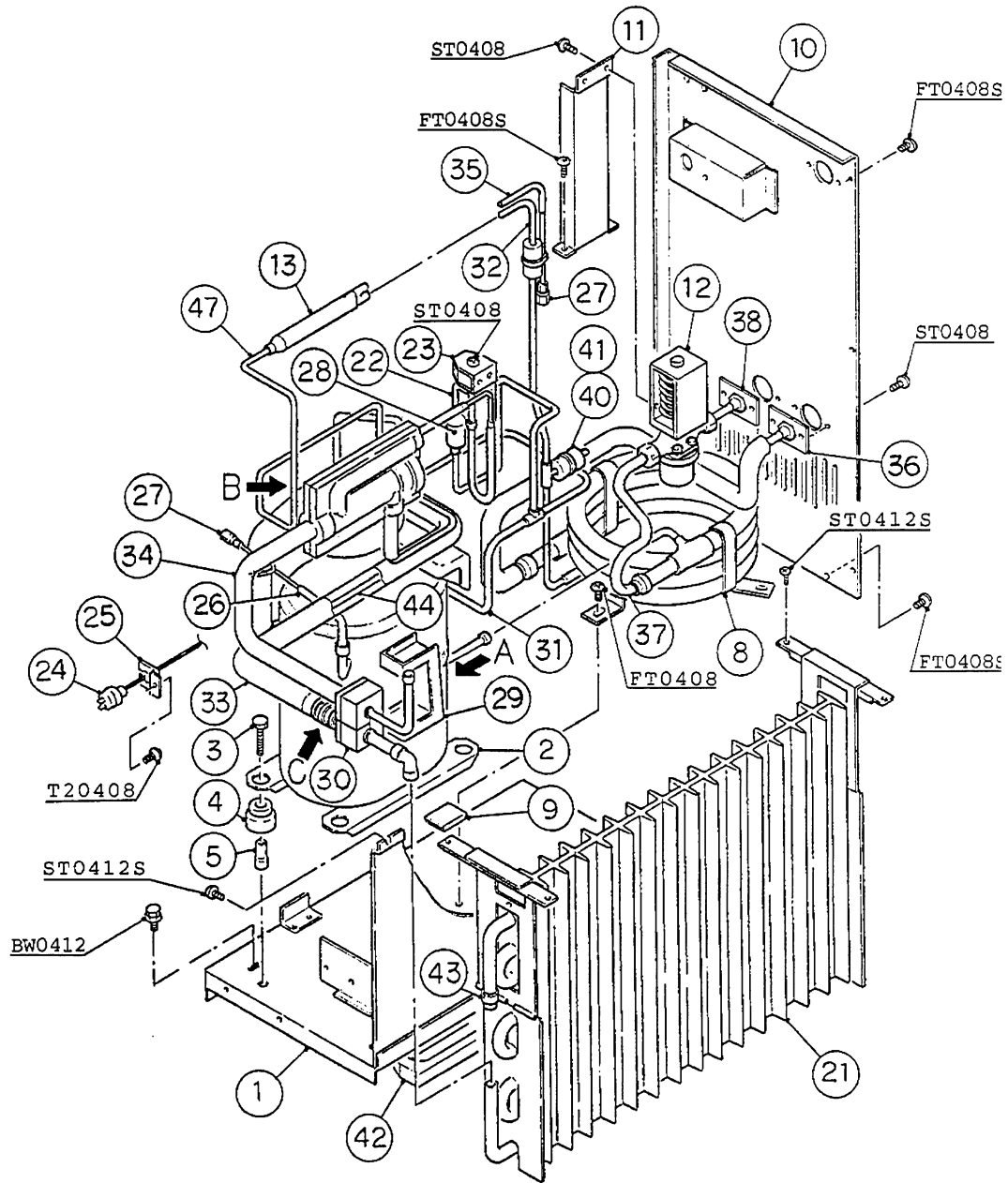




MODEL: KM-250MAE TITLE: B. REFRIGERATION CIRCUIT								
INDEX NO.	DESCRIPTION	MATERIAL OR MODEL NUMBER	PART NUMBER	REQUIRED NUMBER				
				C-1	D-0	E-0	E-1	F-0
1	BASE	G.S	218236G01	1	1	1	1	1
2	COMPRESSOR	RSU4-0050-CAA	436634-01	1	1	1	1	1
3	BOLT	8x45	437889-01	4	4	4	4	4
4	GROMMET	527-0039-04	434403-01	4	4	4	4	4
5	SPACER	527-0039-04	434404-01	4	4	4	4	4
6	PROTECTOR	071-0370-30	437340-01	1	1	1	1	1
7	PROTECTOR HOLDER	-	437339-01	1	1	1	1	1
8	CONDENSER	-	216636-01	1	1	1	1	1
9	RUBBER SEAL	EPDM	327516-01	1	1	1	1	1
10	SHROUD	G.S	218242-01	1	1	1	1	1
11	END PLATE (B)	G.S	443688-01	1	1	1	1	1
12	REAR PANEL	G.S	329558G02	1	1	1	-	
		G.S	329558G03				1	1
13	FAN MOTOR BRACKET	G.S	327914G01	1	1	1	1	1
14	FAN MOTOR	U90B1	440911-01	1	1	1	1	1
		7190-1031						
15	FAN BLADE	-	437749-01	1	x1			
		-	444898-01		o1	1	1	1
16	DRIER	KC-7424	437028-01	1	1	1	1	1
17	EXP. VALVE	HFE-5HHD-5	446461-01	1	1	1	1	1
18	EXP. VALVE COVER (A)	PE FOAM	326445-01	1	1	1	1	1
19	EXP. VALVE COVER (B)	PE FOAM	326445-02	1	1	1	1	1
20	THERMISTOR	-	429006-02	1	1	1	1	1
21	HOLDER - THERMISTOR	COPPER	427430-01	1	1	1	1	1
22	INSULATION - THERMISTOR	PE FOAM	427441-01	1	1	1	1	1
23	REDUCER	COPPER	421904-01	1	1	1	1	1
24	EVAPORATOR	(S-0456)	105195G01	1	-			
		(S-0533)	105195G02		1	1	1	1
25	VALVE BODY	24	440351-01	1	1	1	1	1
26	COIL - VALVE	ADS-24HD-2	440355-01	1	1	1	1	1

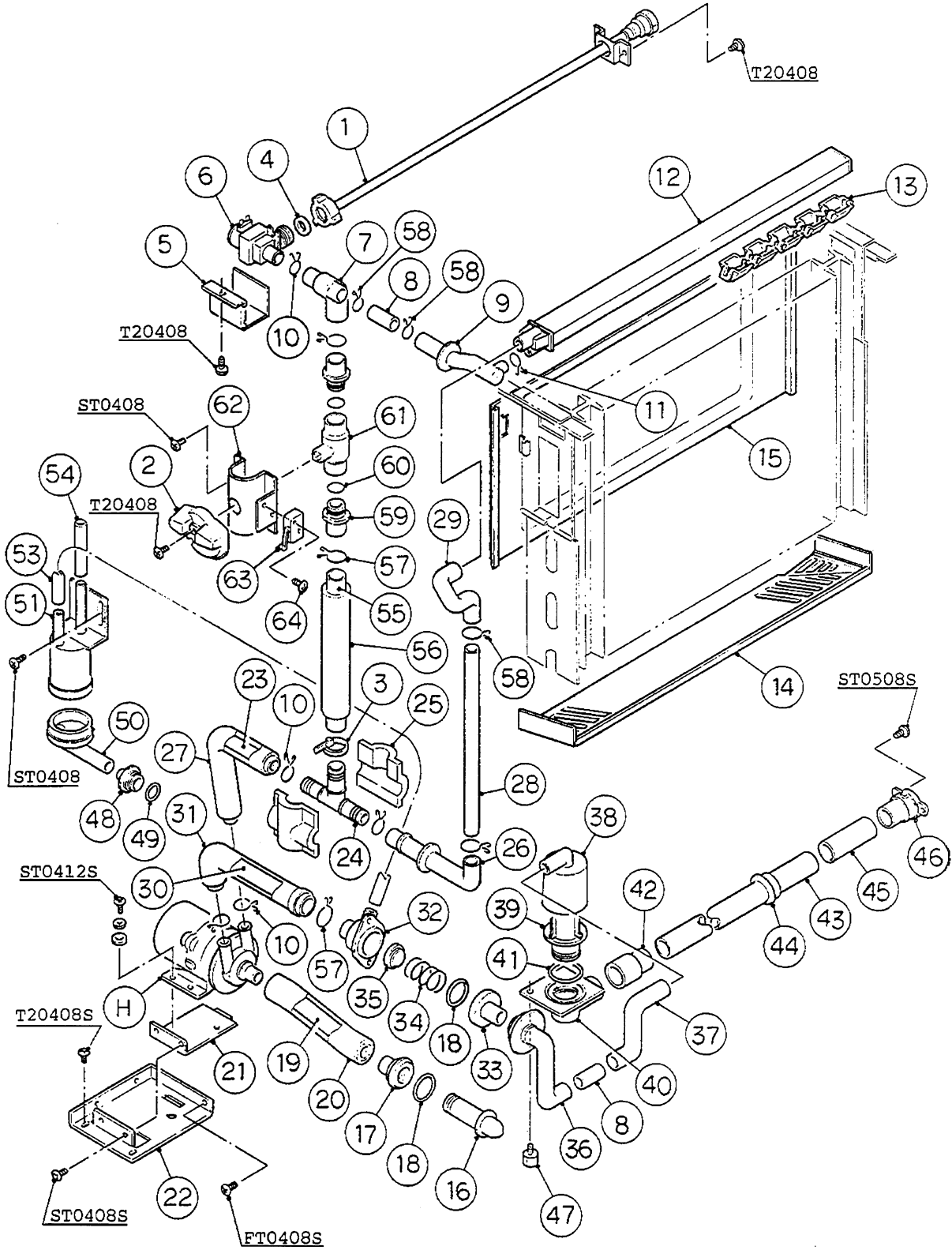
MODEL: KM-250MAE TITLE: B. REFRIGERATION CIRCUIT								
INDEX NO.	DESCRIPTION	MATERIAL OR MODEL NUMBER	PART NUMBER	REQUIRED NUMBER				
				C-1	D-0	E-0	E-1	F-0
27	BOLT	M4x0.7	440355F01	1	1	1	1	1
28	PRESSURE SWITCH	ACB-2UB04	433441-05	1	1	1	1	1
29	PRESSURE SWITCH BRACKET	G.S	434938-01	1	1	1	1	1
30	COPPER TUBE - ACCESS VALVE	COPPER	440406-01	1	1	1	1	1
31	ACCESS VALVE	TCJ-2F15-HD	417366-01	2	2	2	2	2
32	STRAINER	-	430365-01	1	1	1	1	x1
		-	441569-01					o1
33	RUBBER HOLDER	EPDM	325606-01	1	1	1	1	1
34	INSULATED RUBBER TUBE	EPDM	439655G01	1	1	1	1	1
35	COPPER TUBE (A) - HIGH SIDE	COPPER	326715G01	1	1	1	1	1
36	COPPER TUBE (B) - HIGH SIDE	COPPER	326717-01	1	1	1	1	1
37	HEAT EXCHANGER	COPPER	215975G01	1	1	1	1	1
38	COPPER TUBE (A) - LOW SIDE	COPPER	326716G01	1	1	1	1	1
39	COPPER TUBE - DRIER	COPPER	439673-01	1	1	1	1	1
40	CLAMP	S.S	443461-02	2	2	2	2	2
41	INSULATION TUBE	L=40	7762-1020	1	1	1	1	1
42	TIE	CV-200 (PLT-2M)	7920-0010	5	5	5	5	5
43	INSULATION	PE FOAM	440510-01	1	1	1	1	1
44	BUSHING	OCB-500	428394-02	1	1	1	1	1
45	SELF-LOCKING NUT	-	7N21I0832		4	4	4	4

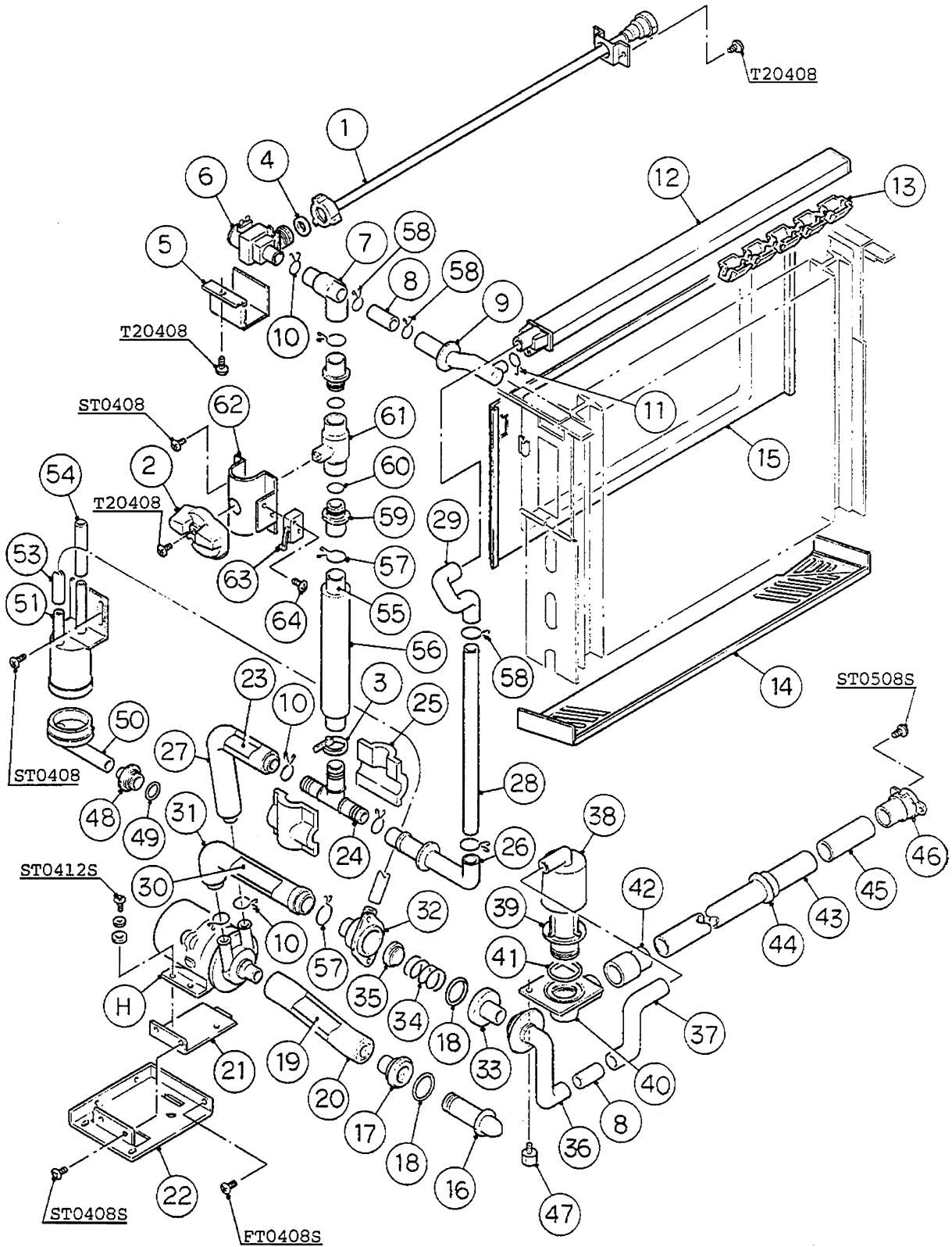


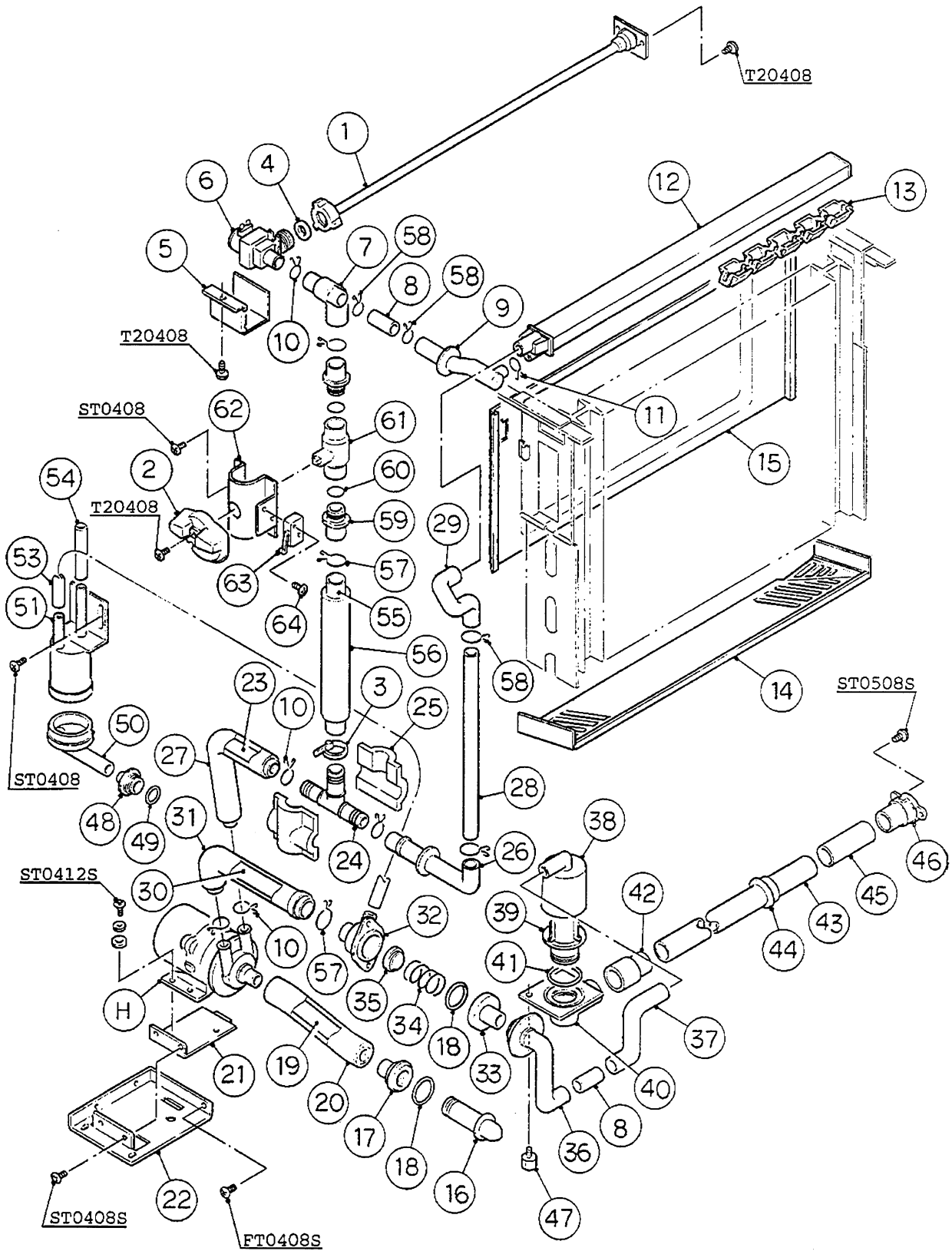


MODEL: KM-250MWE TITLE: B. REFRIGERATION CIRCUIT								
INDEX NO.	DESCRIPTION	MATERIAL OR MODEL NUMBER	PART NUMBER	REQUIRED NUMBER				
				C-1	D-0	E-0	E-1	F-0
1	BASE	G.S	218238G02	1	1	1	1	1
2	COMPRESSOR	RSU4-0050-CAA	436634-01	1	1	1	1	1
3	BOLT	8x45	437889-01	4	4	4	4	4
4	GROMMET	527-0039-04	434403-01	4	4	4	4	4
5	SPACER	527-0039-04	434404-01	4	4	4	4	4
6	PROTECTOR	071-0370-30	437340-01	1	1	1	1	1
7	PROTECTOR HOLDER	-	437339-01	1	1	1	1	1
8	CONDENSER - WATER COOLED	(S-0724)	215544G01	1	1	1	1	1
9	RUBBER SEAL	EPDM	327516-01	1	1	1	1	1
10	REAR PANEL	G.S	218234G02	1	1	1	-	
		G.S	218234G03				1	1
11	WATER REGULATOR BRACKET	G.S	438742-01	1	1	1	1	1
12	WATER REGULATOR	WV11-33RHD	415425-01	1	1	1	1	1
13	DRIER	KC-7424	437028-01	1	1	1	1	1
14	EXP. VALVE	HFE-5HHD-5	446461-01	1	1	1	1	1
15	EXP. VALVE COVER (A)	PE FOAM	326445-01	1	1	1	1	1
16	EXP. VALVE COVER (B)	PE FOAM	326445-02	1	1	1	1	1
17	THERMISTOR	-	429006-02	1	1	1	1	1
18	HOLDER - THERMISTOR	COPPER	427430-01	1	1	1	1	1
19	INSULATION - THERMISTOR	PE FOAM	427441-01	1	1	1	1	1
20	INSULATION TUBE	L=185	7762-2646	1	1	1	1	1
21	EVAPORATOR	(S-0456)	105195G01	1	-			
		(S-0533)	105195G02		1	1	1	1
22	VALVE BODY	24	440351-01	1	1	1	1	1
23	COIL - VALVE	ADS-24HD-2	440355-01	1	1	1	1	1
24	PRESSURE SWITCH	ACB-2UB02	433441-01	1	1	1	1	1
25	PRESSURE SWITCH BRACKET	G.S	434938-01	1	1	1	1	1
26	COPPER TUBE - ACCESS VALVE	COPPER	440406-01	1	1	1	1	1
27	ACCESS VALVE	TCJ-2F15-HD	417366-01	2	2	2	2	2

MODEL: KM-250MWE TITLE: B. REFRIGERATION CIRCUIT								
INDEX NO.	DESCRIPTION	MATERIAL OR MODEL NUMBER	PART NUMBER	REQUIRED NUMBER				
				C-1	D-0	E-0	E-1	F-0
28	STRAINER	-	430365-01	1	1	1	1	x1
		-	441569-01					o1
29	RUBBER HOLDER	EPDM	325606-01	1	1	1	1	1
30	INSULATED RUBBER TUBE	EPDM	439655G01	1	1	1	1	1
31	COPPER TUBE (A) - HIGH SIDE	COPPER	216745G01	1	1	1	1	1
32	COPPER TUBE (B) - HIGH SIDE	COPPER	326718G01	1	1	1	1	1
33	INSULATION TUBE	L=1210	7762-1323	1	1	1	1	1
34	COPPER TUBE (A) - LOW SIDE	COPPER	326719G01	1	1	1	1	1
35	COPPER TUBE - DRIER	COPPER	439673-01	1	1	1	1	1
36	COPPER TUBE (A)	COPPER	4A0344G01	1	1	1	-	
		COPPER	4A0786G01				1	1
37	COPPER TUBE (B)	COPPER	4A0345G01	1	1	1	1	1
38	COPPER TUBE (C)	COPPER	4A0346G01	1	1	1	-	
		COPPER	4A0783G01				1	1
39	CLAMP	S.S	443461-02	2	2	2	2	2
40	INSULATION TUBE	L=40	7762-1020	3	3	3	3	3
41	TIE	CV-200 (PLT-2M)	7920-0010	7	7	7	7	7
42	INSULATION	PE FOAM	440510-01	1	1	1	1	1
43	REDUCER	COPPER	421904-01	1	1	1	1	1
44	COPPER TUBE - LOW SIDE	COPPER	332373G01	1	1	1	1	1
45	INSULATION TUBE	L=100	7762-1323	1	1	1	1	1
46	INSULATION TUBE	L=110	7762-0717	1	1	1	1	1
47	COPPER TUBE - HIGH SIDE	COPPER	326723-01	1	1	1	1	1

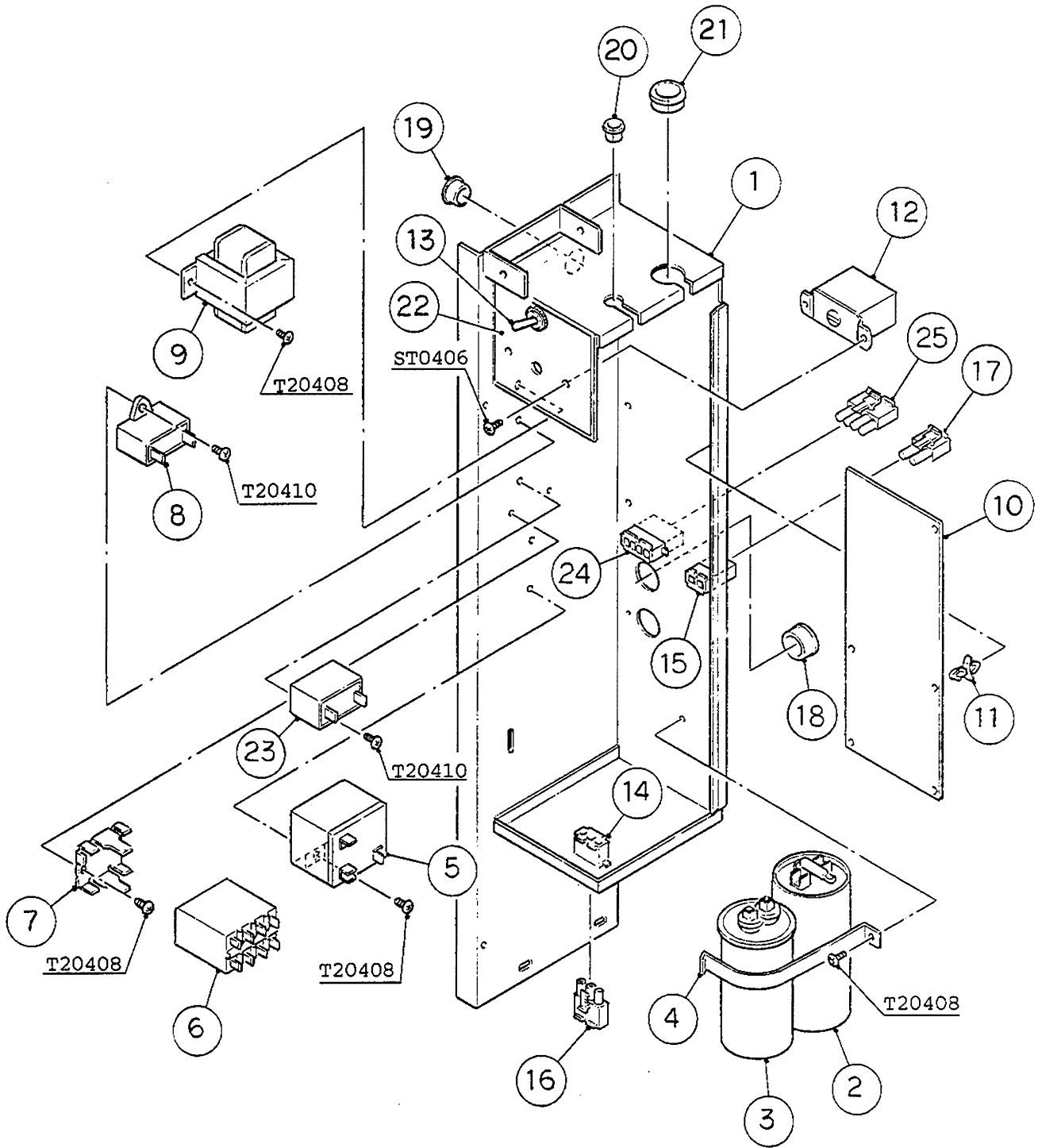




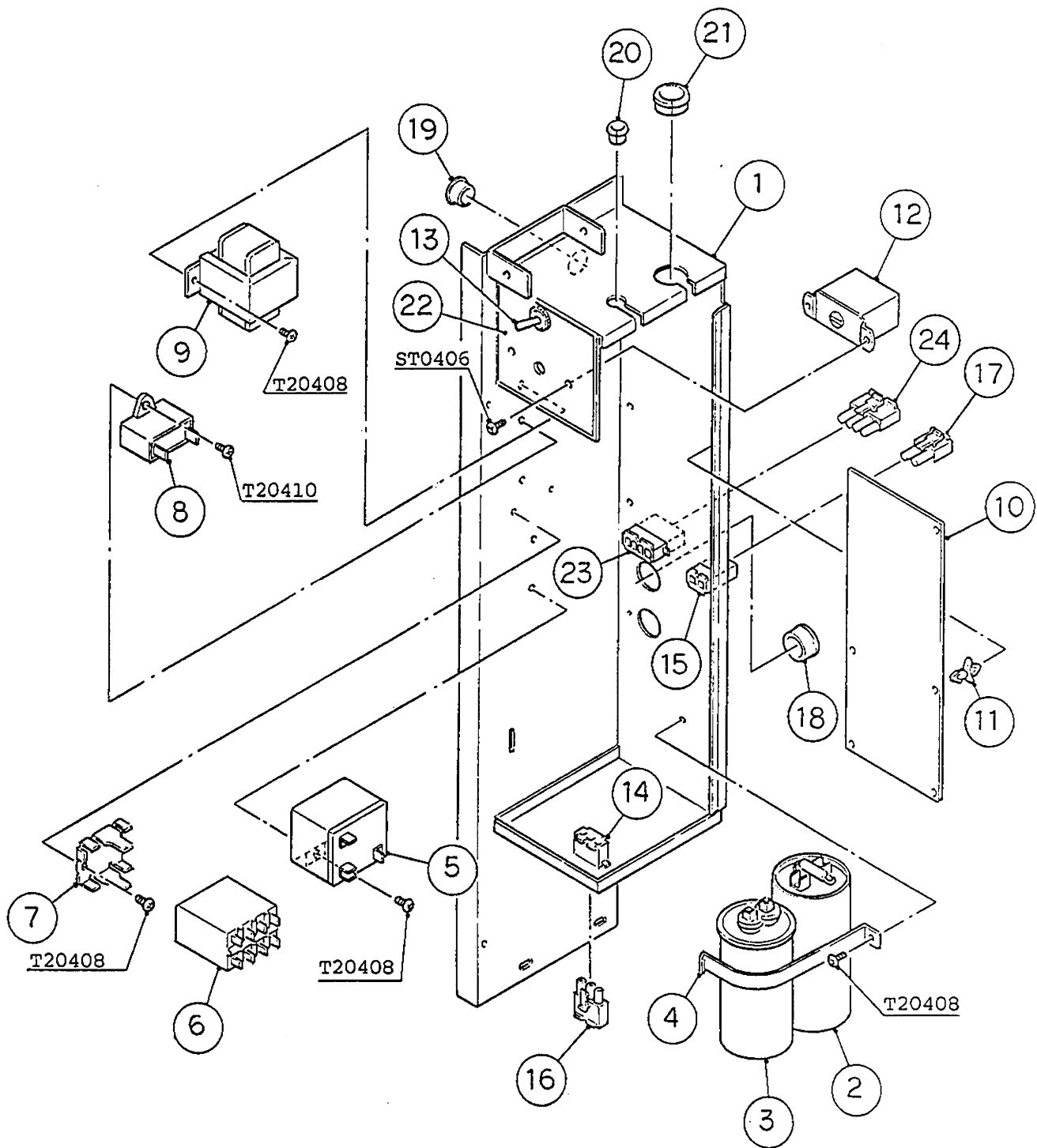


MODEL: KM-250MAE, MWE TITLE: C. WATER CIRCUIT								
INDEX NO.	DESCRIPTION	MATERIAL OR MODEL NUMBER	PART NUMBER	REQUIRED NUMBER				
				C-1	D-0	E-0	E-1	F-0
H	PUMP MOTOR ASSEMBLY	(S-0727)	326257A01	1	1	1	1	1
1	WATER SUPPLY PIPE	BRASS	4A0207G02	1	1	1	-	
		BRASS	4A0768G02				1	1
2	HANDLE	JH1352	215383-01	1	1	1		
3	CABLE TIE	CV-200, (PLT-2M)	7920-0010	1	1	1		
4	RUBBER GASKET	NBR	413854-01	2	2	x2		
		NR	413854-03			o1	1	1
5	WATER VALVE BRACKET	G.S	325429-01	1	1	1	1	1
6	WATER VALVE	J248-096	3U0133-01	1	1	1	1	1
7	WATER SUPPLY HOSE (A)	EPDM	439246-01	1	1	1	1	1
8	JOINT PIPE	ABS	439329-01	2	2	2	2	2
9	WATER SUPPLY HOSE (B)	EPDM	438976-01	1	1	1	1	1
10	HOSE CLAMP	S.S, 18MM	427443-05	5	5	5	5	5
11	HOSE CLAMP	S.S, 13.5MM	427443-07	1	1	1	1	1
12	SPRAY TUBE	ABS	437049G01	1	1	1	1	1
13	SPRAY GUIDE (A)	PE	208586-01	3	3	3	3	3
14	CUBE GUIDE ASSEMBLY	ABS	327633G01	1	1	1	1	1
15	SEPARATOR	ABS	325430-01	1	1	1	1	1
16	SUCTION PIPE (A)	ABS	438987-01	1	1	1	1	1
17	SUCTION PIPE (B)	ABS	438989-01	1	1	1	1	1
18	"O" RING	1AG35	7611-G035	2	2	2	2	2
19	SUCTION HOSE	EPDM	439245-01	1	1	1	1	1
20	INSULATION TUBE	L=160	7762-2636	1	1	1	1	1
21	PUMP MOTOR BRACKET	S.S	327515-01	1	1	1	1	1
22	BASE (B)	S.S	216635-01	1	1	1	1	1
23	DISCHARGE HOSE (A)	EPDM	438977-01	1	1	1	1	1
24	TEE	1401-074	439663-01	1	1	1	1	1
25	TEE INSULATION	PE FOAM	439657-01	2	2	2	2	2
26	DISCHARGE HOSE (B)	EPDM	438985-01	1	1	1	1	1
27	INSULATION TUBE	L=200	7762-2030	1	1	1	1	1

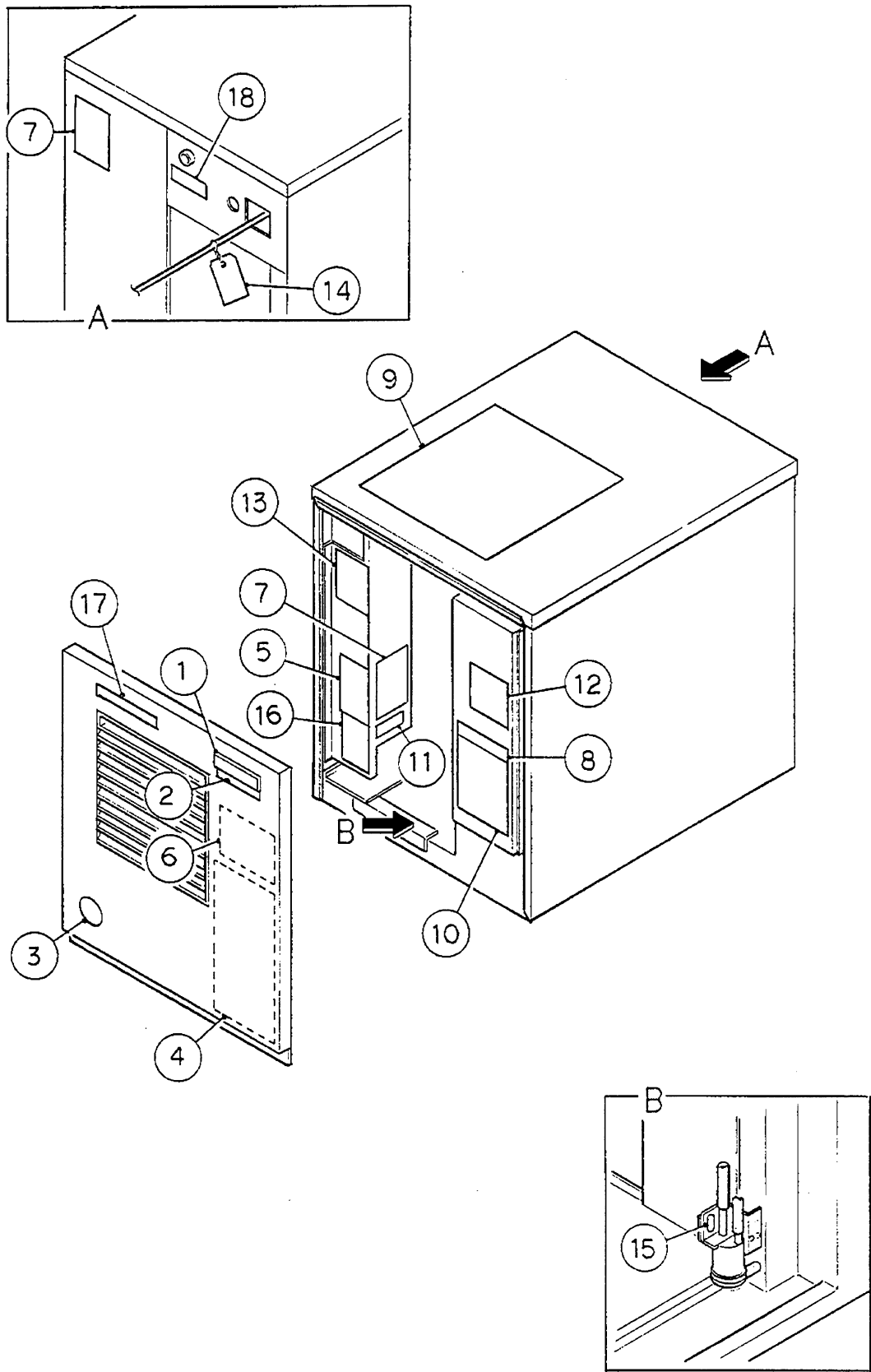
MODEL: KM-250MAE TITLE: C. WATER CIRCUIT								
INDEX NO.	DESCRIPTION	MATERIAL OR MODEL NUMBER	PART NUMBER	REQUIRED NUMBER				
				C-1	D-0	E-0	E-1	F-0
28	PVC PIPE	PVC	439647-01	1	1	1	1	1
29	SPRAY HOSE	EPDM	325607-01	1	1	1	1	1
30	DRAIN HOSE (A)	EPDM	438983-01	1	1	1	1	1
31	INSULATION TUBE	L=190	7762-2030	1	1	1	1	1
32	VALVE HOUSING	ABS	325604-01	1	1	1	1	1
33	DRAIN VALVE	ABS	438975-01	1	1	1	1	1
34	SPRING	S.S	327394-01	1	1	1	1	1
35	VALVE SHEET	EPDM	433705-01	1	1	1	1	1
36	DRAIN HOSE (B)	EPDM	325605-01	1	1	1	1	1
37	DRAIN HOSE (C)	EPDM	438974-01	1	1	1	1	1
38	OVERFLOW CAP	ABS	438980-01	1	1	1	1	1
39	OVERFLOW PIPE	ABS	438981-01	1	1	1	1	1
40	OVERFLOW JOINT ASSEMBLY	-	441545G01	1	1	1	1	1
41	"O"RING	1AP32	7611-P032	1	1	1	1	1
42	RUBBER TUBE	EPDM	432818-01	1	1	1	1	1
43	PVC PIPE	PVC	433509-04	1	x1			
		PVC	433509-02		o1	1	1	1
44	RUBBER RING	EPDM	438984-01	1	1	1	1	1
45	DRAIN HOSE	EPDM	434808-01	1	1	1	1	1
46	FITTING DRAIN	BP-71276	438729-01	1	1	1	1	1
47	THUMBSCREW	ABS, S.S	415949G01	1	1	1	1	1
48	WATER LEVEL PIPE	ABS	438988-01	1	1	1	1	1
49	"O"RING	1AP22	7611-P022	1	1	1	1	1
50	CONNECTOR - FLOAT SWITCH	EPDM	426799-03	1	1	1	1	1
51	FLOAT SWITCH	FS-0893B	433535-01	1	1	1	1	1
52	FLOAT SWITCH BRACKET (B)	G.S	327517-01	-				
53	VINYL HOSE	L=250	7716-0913	1	1	1	1	1
54	VINYL HOSE	L=75	7716-0913	1	1	1	1	1
55	VINYL HOSE	L=215	7716-2025	1	1	1	1	1
56	INSULATION TUBE	L=190	7762-2636	1	1	1	1	1



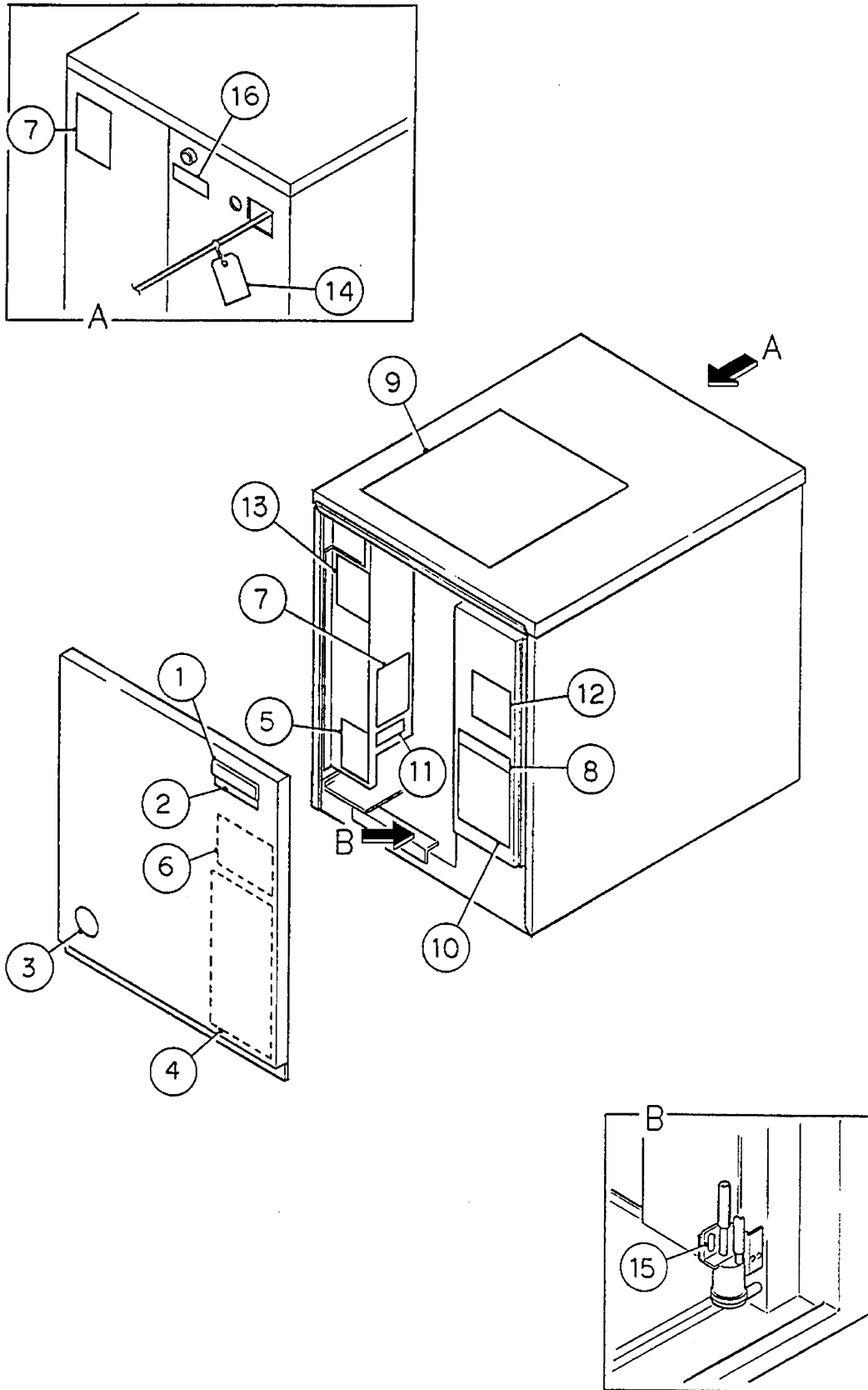
MODEL: KM-250MAE TITLE: D. CONTROL. BOX ASSEMBLY								
INDEX NO.	DESCRIPTION	MATERIAL OR MODEL NUMBER	PART NUMBER	REQUIRED NUMBER				
				C-1	D-0	E-0	E-1	F-0
1	CONTROL BOX	G.S	218240G01	1	1	1	1	1
2	CAPACITOR - STARTING	270-324MFD 125VAC	3A0076-04	1	1	1	1	1
3	CAPACITOR	15MFD 370V	439943-04	1	1	1	1	1
4	STRAP	G.S	434580-07	1	1	1	1	1
5	STARTER	-	442866-01	1	1	1	1	1
6	MAGNETIC CONTACTOR	VC20	428393-01	1	1	1	1	1
7	BRACKET	-	428393F01	1	1	1	1	1
8	CAPACITOR	5.5MFD 250V	443192-03	1	1	1	1	1
9	TRANSFORMER	BW48-005	3U0135-01	1	x1			
		26D285H	3A0172-01		o1	1	1	1
10	CONTROLLER BOARD	MY9KM910	2U0127-01	1	1	1		
11	BOARD SUPPORT	CBLS37-M	4A0336-03	6	6	6		
12	THERMOSTAT	A30-3815-00	439678-01	1	1	1	x1	
		A30-3815-00	4A0738-01				o1	x1
		A30-3815-00	4A0824-01					o1
13	TOGGLE SWITCH	7563K6	443119-01	1	1	1	1	1
14	3P RECEPTACLE HOUSING	3191-03R1	412831-06	2	2	2	2	2
15	2P RECEPTACLE HOUSING	3191-02R1	412831-07	1	1	1	1	1
16	3P PLUG HOUSING	3191-03P	412832-06	2	2	2	2	2
17	2P PLUG HOUSING	3191-02P	412832-07	1	1	1	1	1
18	BUSHING	SB-750-10	420470-05	1	1	1	1	1
19	BUSHING	SB-625-8	420470-01	1	1	1	1	1
20	BUSHING	OCB-500	428394-02	1	1	1	1	1
21	BUSHING	OCB-875	428394-04	1	1	1	1	1
22	CONTROL LABEL	PES FILM	439684-01	1	1	1	1	1
23	CAPACITOR	5MFD 250V	443192-02	1	1	1	1	1
24	4P RECEPTACLE HOUSING	3191-04R1	412831-05	1	1	1	1	1
25	4P PLUG HOUSING	3191-04P	412832-05	1	1	1	1	1



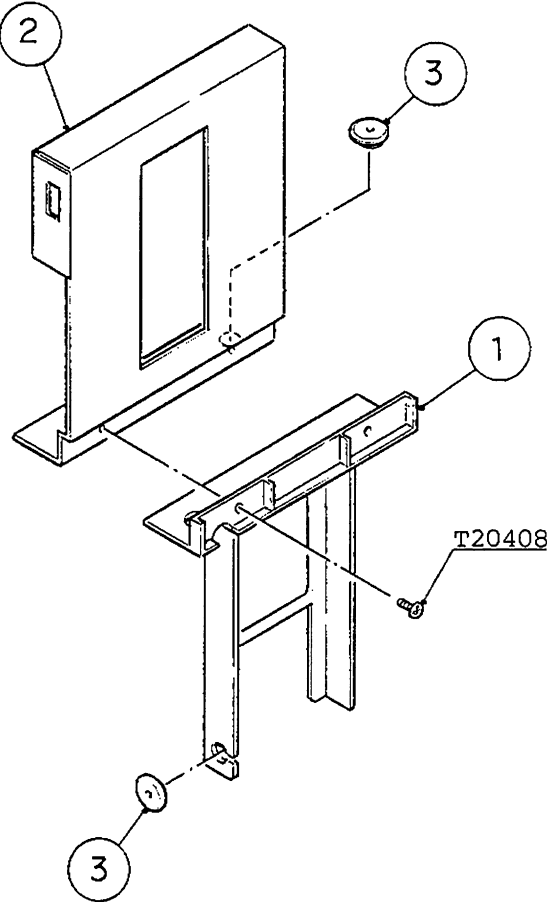
MODEL: KM-250MWE TITLE: D. CONTROL. BOX ASSEMBLY								
INDEX NO.	DESCRIPTION	MATERIAL OR MODEL NUMBER	PART NUMBER	REQUIRED NUMBER				
				C-1	D-0	E-0	E-1	F-0
1	CONTROL BOX	G.S	218240G01	1	1	1	1	1
2	CAPACITOR - STARTING	270-324MFD 125VAC	3A0076-04	1	1	1	1	1
3	CAPACITOR	15MFD 370V	439943-04	1	1	1	1	1
4	STRAP	G.S	434580-07	1	1	1	1	1
5	STARTER	-	442866-01	1	1	1	1	1
6	MAGNETIC CONTACTOR	VC20	428393-01	1	1	1	1	1
7	BRACKET	-	428393F01	1	1	1	1	1
8	CAPACITOR	5.5MFD 250V	443192-03	1	1	1	1	1
9	TRANSFORMER	BW48-005	3U0135-01	1	x1			
		26D285H	3A0172-01		o1	1	1	1
10	CONTROLLER BOARD	MY9KM910	2U0127-01	1	1	1	1	1
11	BOARD SUPPORT	CBLS37-M	4A0336-03	6	6	6	6	6
12	THERMOSTAT	A30-3815-00	439678-01	1	1	1	x1	
		A30-3815-00	4A0738-01				o1	x1
		A30-3815-00	4A0824-01					o1
13	TOGGLE SWITCH	7563K6	443119-01	1	1	1	1	1
14	3P RECEPTACLE HOUSING	3191-03R1	412831-06	1	1	1	1	1
15	2P RECEPTACLE HOUSING	3191-02R1	412831-07	1	1	1	1	1
16	3P PLUG HOUSING	3191-03P	412832-06	1	1	1	1	1
17	2P PLUG HOUSING	3191-02P	412832-07	1	1	1	1	1
18	BUSHING	SB-750-10	420470-05	1	1	1	1	1
19	BUSHING	SB-625-8	420470-01	1	1	1	1	1
20	BUSHING	OCB-500	428394-02	1	1	1	1	1
21	BUSHING	OCB-875	428394-04	1	1	1	1	1
22	CONTROL LABEL	PES FILM	439684-01	1	1	1	1	1
23	4P RECEPTACLE HOUSING	3191-04R1	412831-05	1	1	1	1	1
24	4P PLUG HOUSING	3191-04P	412832-05	1	1	1	1	1

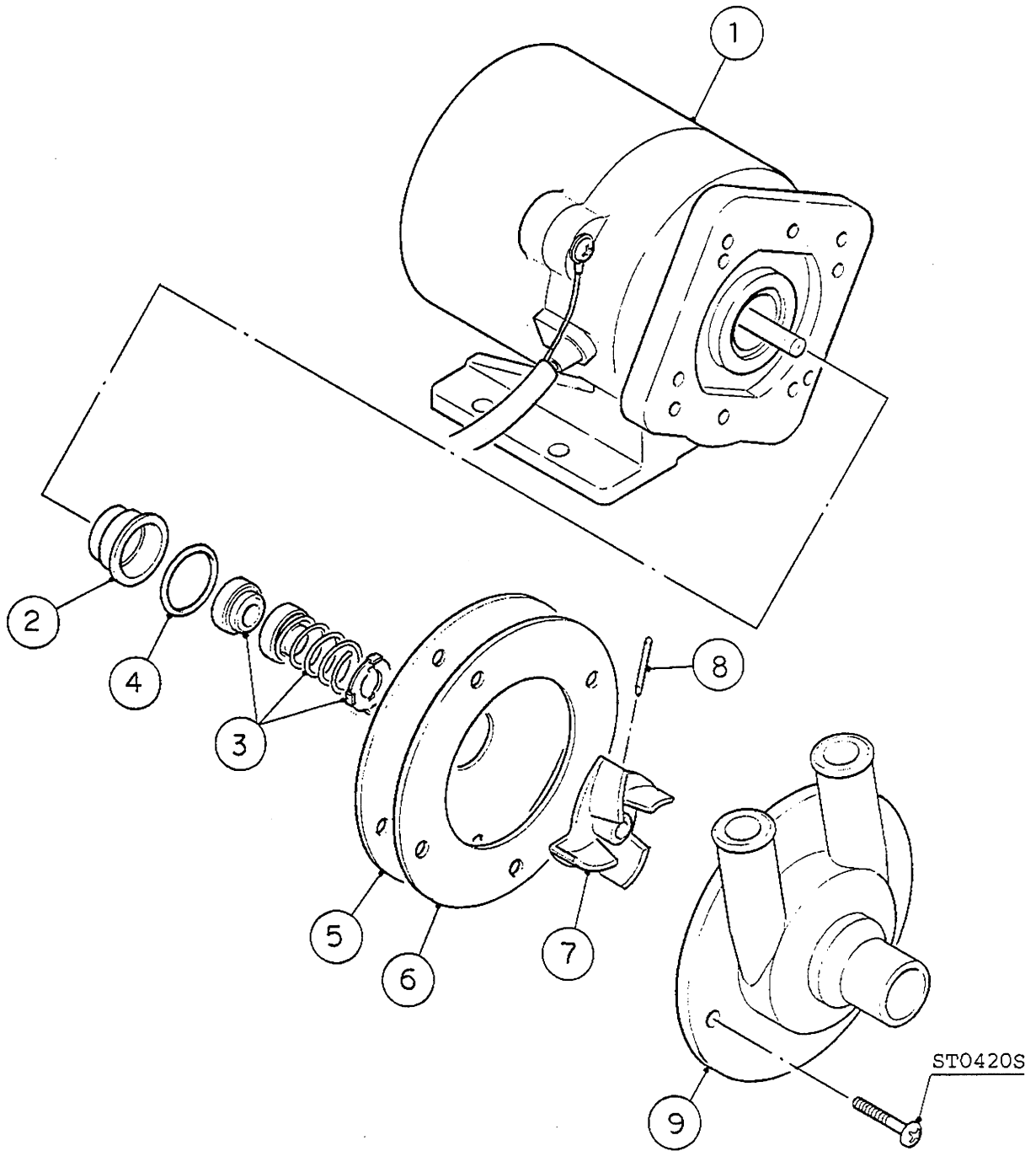


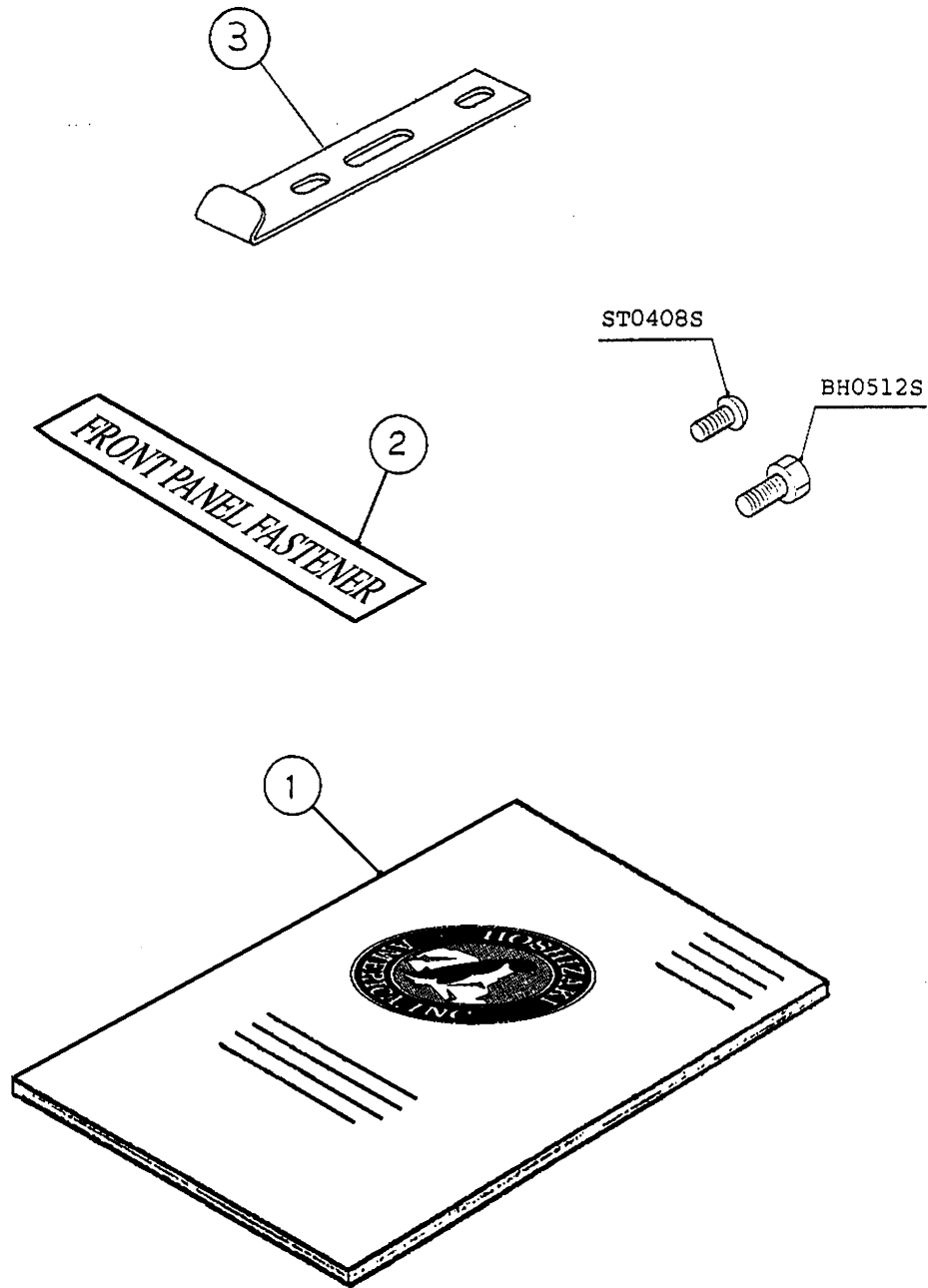
MODEL: KM-250MAE TITLE: E. LABEL LOCATION								
INDEX NO.	DESCRIPTION	MATERIAL OR MODEL NUMBER	PART NUMBER	REQUIRED NUMBER				
				C-1	D-0	E-0	E-1	F-0
1	EMBLEM (L) - HOSHIZAKI	ABS	418634G01	1	x1			
	EMBLEM	PETP FILM	4A0560-01		o1	1	1	1
2	MODEL NUMBER LABEL	PES FILM	436041-40	1	1	1	1	1
3	LABEL - PENGUIN (R)	PETP FILM	410994-01	1	x1			
		PETP FILM	4A0526-01		o1	1	1	1
4	MAINTENANCE LABEL	PVC FILM	326258-01	1	1	1	1	1
5	CAUTION LABEL (H)	PVC FILM	439148-01	1	1	1	1	1
6	WIRING LABEL	PVC FILM	326259-01	1	1	1	1	1
7	NAME PLATE	PES FILM	446241-01	2	2	2	2	2
8	CAUTION LABEL	PVC FILM	436198-01	1	1	1	1	1
9	INSTRUCTION SHEET	PAPER	215640-01	1	1	1	1	1
10	MANUAL LABEL - BIN CONTROL	PVC FILM	326260-01	1	1	1	1	1
11	LABEL - R22	PES FILM	440362-01	1	1	1	1	1
12	OPERATION LABEL - VALVE	PVC FILM	440525-01	1	1	1	1	1
13	MANUAL LABEL	PVC FILM	439686-01	1	1	1	1	1
14	TAG - WARNING: ELECTRICAL CONNECTION	PAPER	435005-01	1	1	1	1	1
15	LABEL - ADJUSTED	PES FILM	419404-01	1	1	1	1	1
16	CAUTION LABEL (E)	PVC FILM	439145-01	1	1	1	1	1
17	LABEL - AIR FILTER	PETP FILM	426177-01	1	1	1	1	1
18	INSTRUCTION LABEL	PVC FILM	444575-01	1	1	1	1	1



MODEL: KM-250MWE TITLE: E. LABEL LOCATION								
INDEX NO.	DESCRIPTION	MATERIAL OR MODEL NUMBER	PART NUMBER	REQUIRED NUMBER				
				C-1	D-0	E-0	E-1	F-0
1	EMBLEM (L) - HOSHIZAKI	ABS	418634G01	1	x1			
	EMBLEM	PETP FILM	4A0560-01		o1	1	1	1
2	MODEL NUMBER LABEL	PES FILM	436041-41	1	1	1	1	1
3	LABEL - PENGUIN (R)	PETP FILM	410994-01	1	x1			
		PETP FILM	4A0526-01		o1	1	1	1
4	MAINTENANCE LABEL	PVC FILM	326258-01	1	1	1	1	1
5	CAUTION LABEL (H)	PVC FILM	439148-01	1	1	1	1	1
6	WIRING LABEL	PVC FILM	326259-01	1	1	1	1	1
7	NAME PLATE	PES FILM	446242-01	2	2	2	2	2
8	CAUTION LABEL	PVC FILM	436198-01	1	1	1	1	1
9	INSTRUCTION SHEET	PAPER	215640-01	1	1	1	1	1
10	MANUAL LABEL - BIN CONTROL	PVC FILM	326260-01	1	1	1	1	1
11	LABEL - R22	PES FILM	440362-01	1	1	1	1	1
12	OPERATION LABEL - VALVE	PVC FILM	440525-01	1	1	1	1	1
13	MANUAL LABEL	PVC FILM	439686-01	1	1	1	1	1
14	TAG - WARNING: ELECTRICAL CONNECTION	PAPER	435005-01	1	1	1	1	1
15	LABEL - ADJUSTED	PES FILM	419404-01	1	1	1	1	1
16	INSTRUCTION LABEL	PVC FILM	444575-01	1	1	1	1	1







MODULAR CRESCENT CUBER

MODEL
KM-250MAE
KM-250MWE

PARTS LIST

ISSUED: OCT. 19, 1993

REVISED: -----

PRINTED: MAR. 15, 1995

ITEM NO: 71091