
NO. 71131

ISSUED: JAN. 8, 1999

REVISED: OCT. 14, 2002



**HOSHIZAKI
STACKABLE CRESCENT CUBER**

MODELS

KM-2000SWF3

KM-2000SRF3

KM-2000SWH3

KM-2000SRH3

PARTS LIST

| | | |
|--------------------|-----|-------------|
| KM-2000SWF3 | H-0 | MARCH 1998 |
| | H-1 | JULY 1998 |
| | J-0 | DEC., 1998 |
| | K-0 | DEC., 1999 |
| KM-2000SRF3 | H-0 | MARCH 1998 |
| | H-1 | JULY 1998 |
| | J-1 | FEB., 1999 |
| | K-0 | DEC., 1999 |
| KM-2000SWH3 | L-0 | JAN., 2001 |
| | M-0 | DEC., 2001 |
| | M-1 | MARCH, 2002 |
| | M-3 | MAY, 2002 |
| KM-2000SRH3 | L-0 | DEC., 2000 |
| | M-0 | JAN., 2002 |
| | M-1 | MARCH, 2002 |
| | M-2 | MAY, 2002 |

MATERIAL ABBREVIATIONS

ALUMINUM

AL = Aluminum

COPPER

CU = Copper

PLASTIC

ABS = Acrylonitrile -butadiene - styrene
 AC = Polyacetal
 EVA = Ethylene vinyl acetate
 PA = Polyamide = Nylon
 PC = Polycarbonate
 PE = Polyethylene
 PES = Polyester
 PETP = Polyethylene terephthalate = Tetlon
 PP = Polypropylene
 PS = Polystyrene
 PIFE = Polytetrafluoroethylene = Teflon
 PUR = Polyurethane
 PVC = Polyvinyl chloride

RUBBER

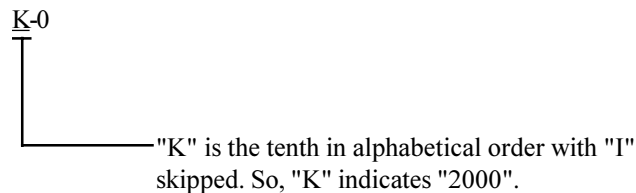
VN = Vinyl Nitrile
 EPDM = EP rubber
 NBR = Nitrile butadiene rubber
 NR = Natural rubber
 NP = Neoprene
 SI.R = Silicone rubber
 SY.R = Synthetic rubber
 EPH = Epichlorohydrin

STEEL

GS = Galvanized steel
 SS = Stainless steel
 PS = Plated steel
 PAS = Primed steel

AUXILIARY CODES

Ex.1

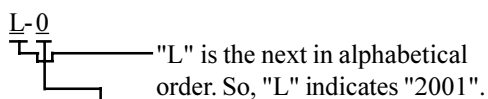


(Note) - = Part deleted.

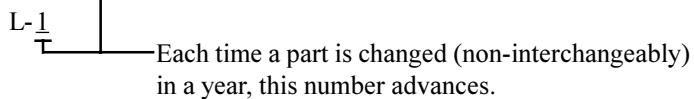
x = Part deleted and replaced by "o" part (interchangeable).

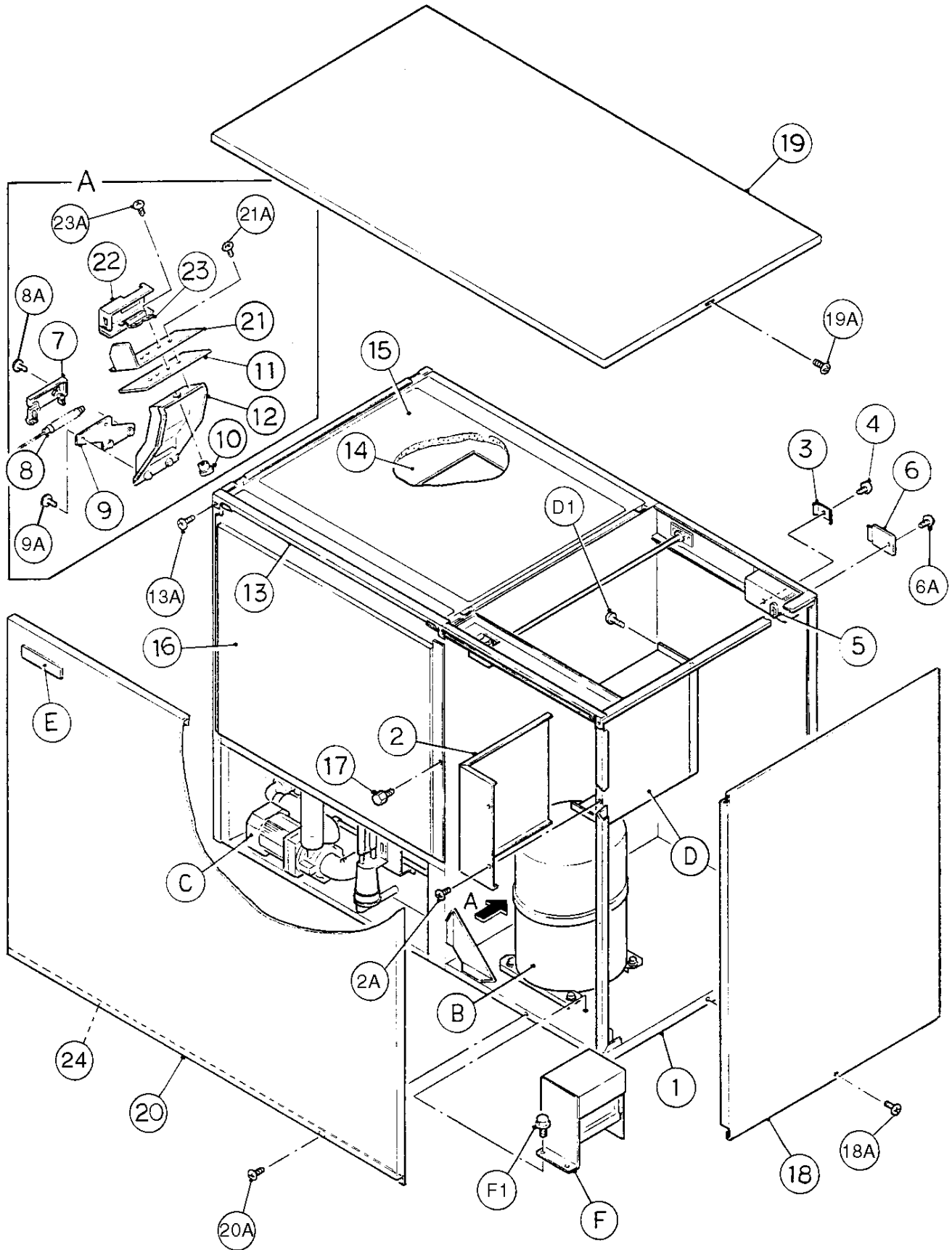
o = New part for "x" in the same auxiliary code.

Ex.2



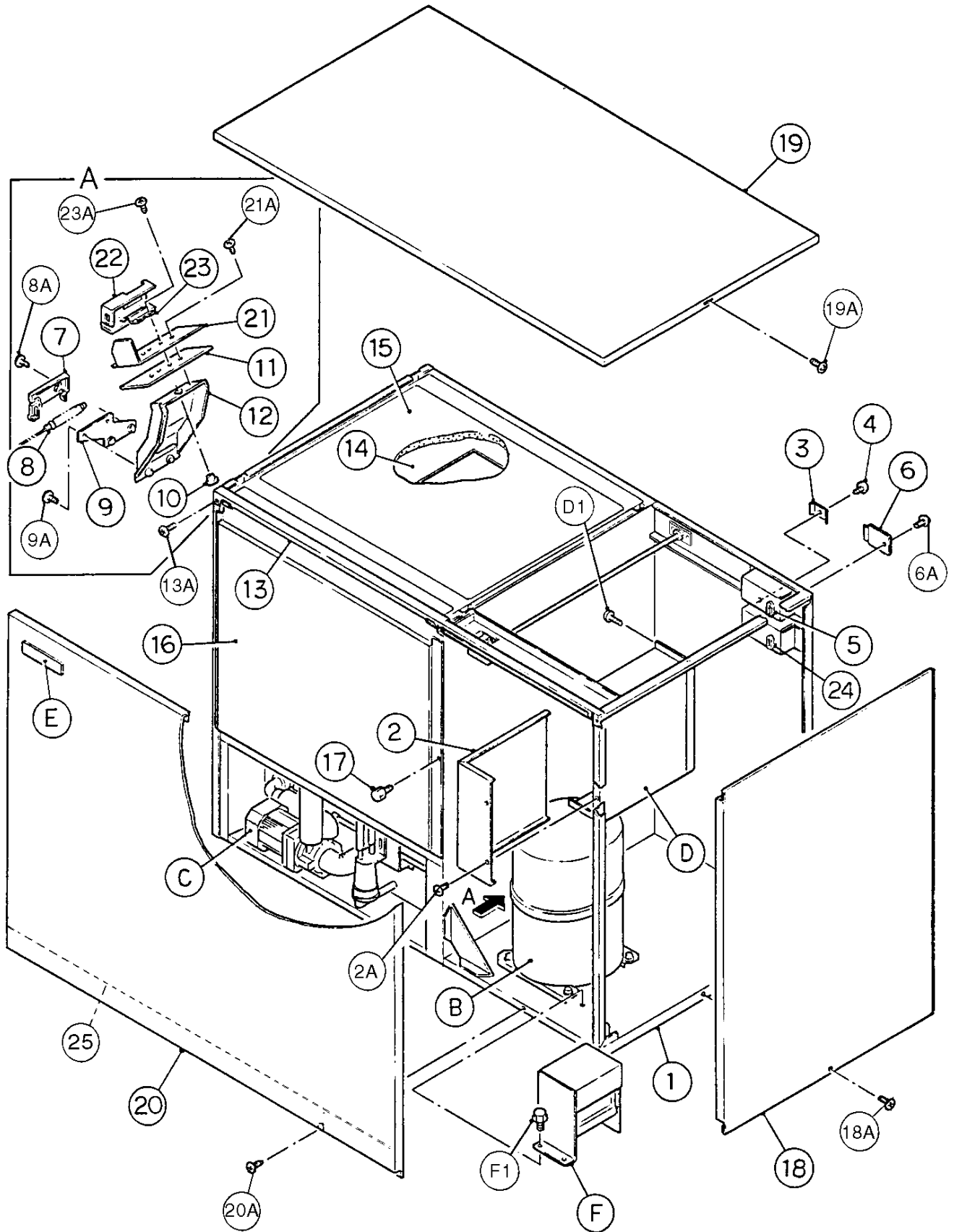
Ex.3





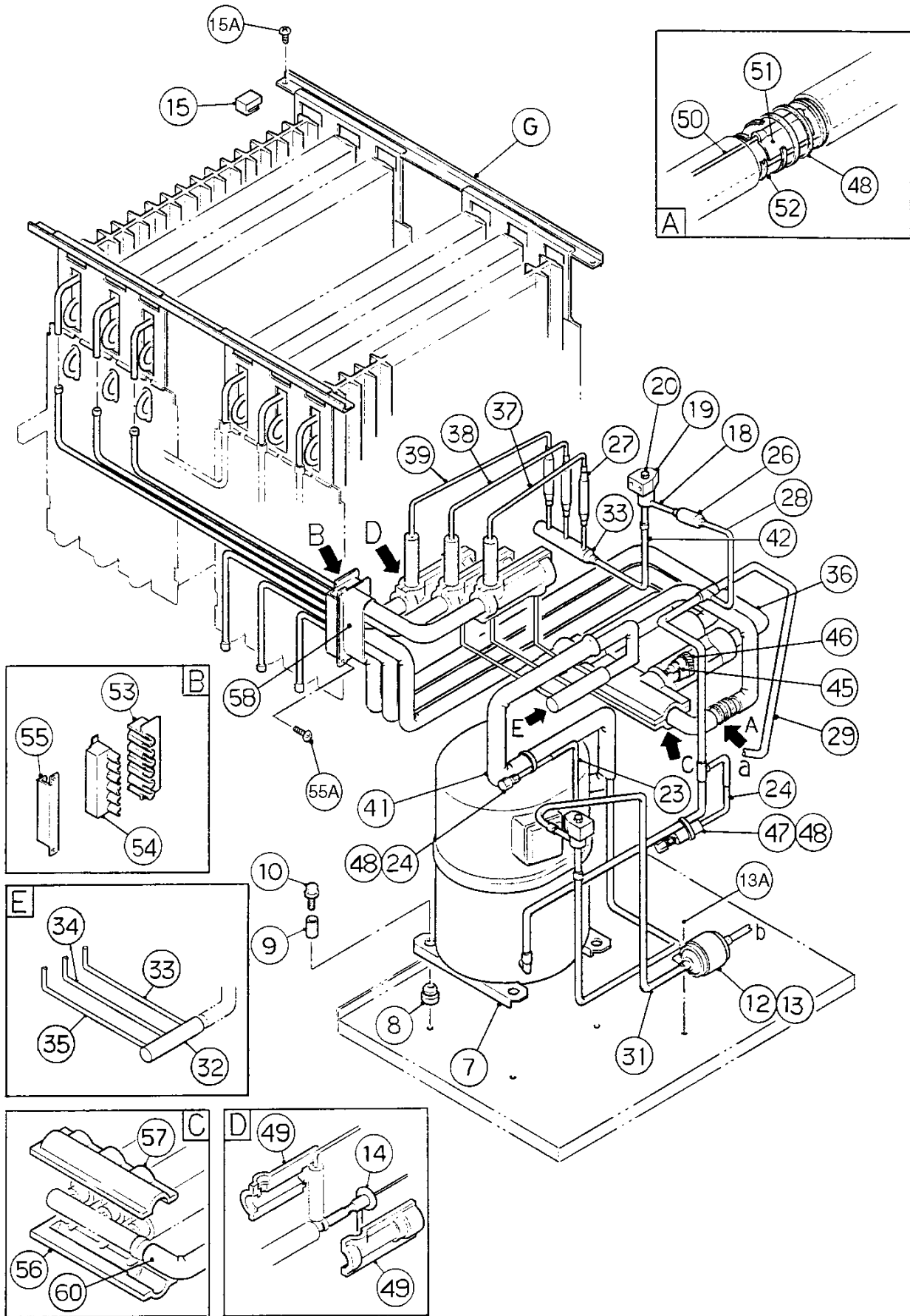
| MODEL: KM-2000SWF3, SWH3 TITLE: A. ICE CUBER ASSEMBLY | | | | | | | | | | | |
|---|----------------------------|--------------------------|-------------|-----------------|-----|------------|-----|-------------|-----|-----|---|
| INDEX NO. | DESCRIPTION | MATERIAL OR MODEL NUMBER | PART NUMBER | REQUIRED NUMBER | | | | | | | |
| | | | | KM-2000SWF3 | | | | KM-2000SWH3 | | | |
| | | | | H-0 | H-1 | J-0 K-0 | L-0 | M-0 | M-1 | M-3 | |
| B | REFRIGERATION CIRCUIT | - | 1A0228A01 | 1 | 1 | 1 | 1 | 1 | - | | |
| | | - | 1A0707A01 | | | | | | 1 | 1 | |
| C | WATER CIRCUIT | - | 105122A05 | 1 | 1 | 1 | 1 | 1 | 1 | 1 | |
| D | CONTROL BOX ASSEMBLY | HS-1105 | 2A1122A03 | 1 | 1 | 1 | 1 | 1 | 1 | - | |
| | | - | 2A2527A01 | | | | | | | | 1 |
| D1 | T2 SCREW | 4X8 | 7P31-0408 | 3 | 3 | 3 | 3 | | | | |
| E | LABEL LOCATION | - | 2A1124A01 | 1 | 1 | 1 | | | | | |
| | | - | 2A2098A01 | | | | 1 | 1 | 1 | - | |
| | | - | 2A2560A01 | | | | | | | | 1 |
| F | TRANSFORMER BOX ASSEMBLY | HS-0126 | 3A1102A01 | 1 | 1 | 1 | 1 | 1 | 1 | 1 | |
| F1 | HEX HEAD BOLT WWASHER (LF) | 5X10 | 7B0130510 | 4 | 4 | 4 | 4 | 4 | 4 | 4 | |
| 1 | EVAPORATOR CASE | - | 2A1102G06 | 1 | 1 | 1 | | | | | |
| | | - | 2A2100G03 | | | | 1 | 1 | - | | |
| | | - | 2A2100G04 | | | | | | 1 | 1 | |
| 2 | CONTROL BOX COVER | GS | 3A0174-01 | 1 | 1 | 1 | 1 | 1 | 1 | - | |
| | | GS | 3A2386-01 | | | | | | | | 1 |
| 2A | T2 SCREW | 4X8 | 7P31-0408 | 3 | 3 | 3 | 3 | 3 | 3 | 3 | |
| 3 | SQUARE WASHER | BRASS | 433537-02 | 1 | 1 | 1 | 1 | 1 | 1 | 1 | |
| 4 | SCREW - GROUNDING | BRASS | 433304-02 | 1 | 1 | 1 | 1 | 1 | 1 | 1 | |
| 5 | BUSHING | SR-34-2 | 420472-05 | 1 | 1 | 1 | 1 | 1 | 1 | 1 | |
| 6 | JUNCTION BOX COVER | GS | 433410-01 | 1 | 1 | 1 | 1 | 1 | 1 | 1 | |
| 6A | T2 SCREW | 4X8 | 7P31-0408 | 2 | 2 | 2 | 2 | 2 | 2 | 2 | |
| 7 | BULB HOLDER | PE | 328919-01 | 1 | 1 | 1 | 1 | 1 | 1 | 1 | |
| 8 | SPACER | PE | 443545-01 | 1 | 1 | 1 | 1 | 1 | 1 | 2 | |
| 8A | T2 SCREW | 4X16, SS | 7P32-0416 | 2 | 2 | 2 | 2 | 2 | 2 | 2 | |
| 9 | BULB HOLDER (C) | ABS | 325845G01 | 1 | 1 | 1 | 1 | 1 | 1 | 1 | |
| 9A | TRUSS HEAD SCREW | 4X12, SS | 7C32-0412 | 2 | 2 | 2 | 2 | 2 | 2 | 2 | |
| 10 | BUSHING | EPDM | 425307-01 | 1 | 1 | 1 | 1 | 1 | 1 | 1 | |
| 11 | SPACER | ABS | 439727-01 | 1 | 1 | 1 | 1 | 1 | 1 | 1 | |

| MODEL: KM-2000SWF3, SWH3 TITLE: A. ICE CUBER ASSEMBLY | | | | | | | | | | | |
|---|-----------------------|--------------------------|-------------|-----------------|------------|-----|-----|-------------|-----|-----|--|
| INDEX NO. | DESCRIPTION | MATERIAL OR MODEL NUMBER | PART NUMBER | REQUIRED NUMBER | | | | | | | |
| | | | | KM-2000SWF3 | | | | KM-2000SWH3 | | | |
| | | | | H-0 | H-1 J-0 | K-0 | L-0 | M-0 | M-1 | M-3 | |
| 12 | BULB HOLDER (D) | ABS | 215644G01 | 1 | 1 | 1 | 1 | 1 | 1 | 1 | |
| 13 | FRONT PANEL - BRACKET | SS | 323903-01 | 1 | 1 | 1 | 1 | 1 | 1 | 1 | |
| 13A | T2 SCREW | 4X12, SS | 7P32-0412 | 3 | 3 | 3 | 3 | 3 | 3 | 3 | |
| 14 | SPACER | ABS | 324321-01 | 1 | 1 | 1 | 1 | 1 | 1 | 1 | |
| 15 | TOP INSULATION | ABS, PE | 324216G01 | 1 | 1 | 1 | 1 | 1 | 1 | 1 | |
| 16 | FRONT INSULATION | ABS, PE | 326041G01 | 1 | 1 | 1 | 1 | 1 | 1 | 1 | |
| 17 | THUMBSCREW | ABS, SS | 415949G01 | 1 | 1 | 1 | 1 | 1 | 1 | 1 | |
| 18 | SIDE PANEL (R) | SS | 215381G01 | 1 | 1 | 1 | | | | | |
| | | SS | 215381G02 | | | | 1 | 1 | 1 | 1 | |
| 18A | TRUSS HEAD SCREW | 4X8, SS | 7C32-0408 | 3 | 3 | 3 | 3 | 3 | 3 | 3 | |
| 19 | TOP PANEL | SS | 213669-02 | 1 | 1 | 1 | | | | | |
| | | SS | 2A2096-01 | | | | 1 | 1 | 1 | 1 | |
| 19A | TRUSS HEAD SCREW | 4X8, SS | 7C32-0408 | 3 | 3 | 3 | 3 | 3 | 3 | 3 | |
| 20 | FRONT PANEL | SS | 325848G01 | 1 | 1 | 1 | | | | | |
| | | SS | 3A1838G01 | | | | 1 | 1 | 1 | 1 | |
| 20A | TRUSS HEAD SCREW | 4X16, SS | 7C32-0416 | 2 | 2 | 2 | 2 | 2 | 2 | 2 | |
| 21 | BULB HOLDER (E) | GS | 439725-01 | 1 | 1 | 1 | 1 | 1 | 1 | 1 | |
| 21A | TRUSS HEAD SCREW | 4X12, SS | 7C32-0412 | 2 | 2 | 2 | 2 | 2 | 2 | 2 | |
| 22 | BULB HOLDER (F) | GS | 328743-01 | 1 | 1 | 1 | 1 | 1 | 1 | 1 | |
| 23 | BULB HOLDER (G) | GS | 439726-01 | 1 | 1 | 1 | 1 | 1 | 1 | 1 | |
| 23A | TRUSS HEAD SCREW | 4X6, SS | 7C32-0406 | 2 | 2 | 2 | 2 | 2 | 2 | 2 | |
| 24 | GASKET | L=1219 | 4A0808L02 | | | 1 | 1 | 1 | 1 | 1 | |
| | | | | | | | | | | | |
| | | | | | | | | | | | |
| | | | | | | | | | | | |
| | | | | | | | | | | | |
| | | | | | | | | | | | |
| | | | | | | | | | | | |



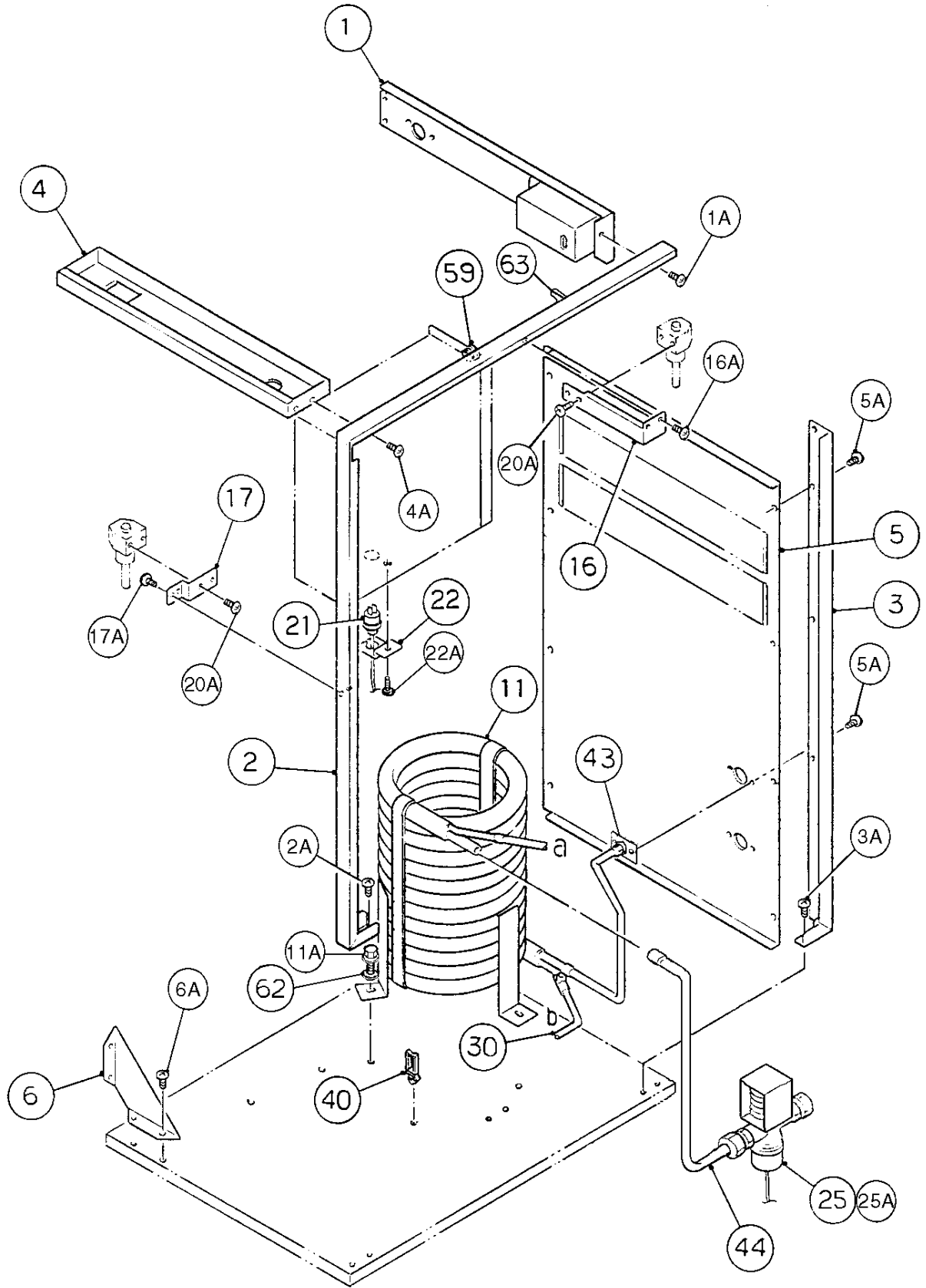
| MODEL: KM-2000SRF3, SRH3 TITLE: A. ICE CUBER ASSEMBLY | | | | | | | | | | | |
|---|----------------------------|--------------------------|-------------|-----------------|-----|------------|-----|-------------|-----|-----|--|
| INDEX NO. | DESCRIPTION | MATERIAL OR MODEL NUMBER | PART NUMBER | REQUIRED NUMBER | | | | | | | |
| | | | | KM-2000SRF3 | | | | KM-2000SRH3 | | | |
| | | | | H-0 | H-1 | J-1 K-0 | L-0 | M-0 | M-1 | M-2 | |
| B | REFRIGERATION CIRCUIT | - | 1A0237A01 | 1 | 1 | 1 | 1 | 1 | x1 | | |
| | | - | 1A0237A02 | | | | | | o1 | 1 | |
| C | WATER CIRCUIT | - | 105122A05 | 1 | 1 | 1 | 1 | 1 | 1 | 1 | |
| D | CONTROL BOX ASSEMBLY | - | 2A1122A03 | 1 | 1 | 1 | 1 | 1 | 1 | - | |
| | | - | 2A2527A01 | | | | | | | 1 | |
| D1 | T2 SCREW | 4X8 | 7P31-0408 | 3 | 3 | 3 | 3 | 3 | 3 | 3 | |
| E | LABEL LOCATION | - | 2A1125A01 | 1 | 1 | 1 | | | | | |
| | | - | 2A2097A01 | | | | 1 | 1 | 1 | - | |
| | | - | 2A2561A01 | | | | | | | 1 | |
| F | TRANSFORMER BOX ASSEMBLY | HS-0126 | 3A1102A01 | 1 | 1 | 1 | 1 | 1 | 1 | 1 | |
| F1 | HEX HEAD BOLT WWASHER (LF) | 5X10 | 7B0130510 | 4 | 4 | 4 | 4 | 4 | 4 | 4 | |
| 1 | EVAPORATOR CASE | - | 2A1102G07 | 1 | 1 | 1 | | | | | |
| | | - | 2A2100G02 | | | | 1 | 1 | 1 | 1 | |
| 2 | CONTROL BOX COVER | GS | 3A0174-01 | 1 | 1 | 1 | 1 | 1 | 1 | - | |
| | | GS | 3A2386-01 | | | | | | | 1 | |
| 2A | T2 SCREW | 4X8 | 7P31-0408 | 3 | 3 | 3 | 3 | 3 | 3 | 3 | |
| 3 | SQUARE WASHER | BRASS | 433537-02 | 2 | 2 | 2 | 2 | 2 | 2 | 2 | |
| 4 | SCREW - GROUNDING | BRASS | 433304-02 | 2 | 2 | 2 | 2 | 2 | 2 | 2 | |
| 5 | BUSHING | SR-34-2 | 420472-05 | 1 | 1 | 1 | 1 | 1 | 1 | 1 | |
| 6 | JUNCTION BOX COVER | GS | 433410-01 | 2 | 2 | 2 | 2 | 2 | 2 | 2 | |
| 6A | T2 SCREW | 4X8 | 7P31-0408 | 2 | 2 | 2 | 2 | 2 | 2 | 2 | |
| 7 | BULB HOLDER | PE | 328919-01 | 1 | 1 | 1 | 1 | 1 | 1 | 1 | |
| 8 | SPACER | PE | 443545-01 | 1 | 1 | 1 | 1 | 1 | 1 | 2 | |
| 8A | T2 SCREW | 4X16, SS | 7P32-0416 | 2 | 2 | 2 | 2 | 2 | 2 | 2 | |
| 9 | BULB HOLDER (C) | ABS | 325845G01 | 1 | 1 | 1 | 1 | 1 | 1 | 1 | |
| 9A | TRUSS HEAD SCREW | 4X12, SS | 7C32-0412 | 2 | 2 | 2 | 2 | 2 | 2 | 2 | |
| 10 | BUSHING | EPDM | 425307-01 | 1 | 1 | 1 | 1 | 1 | 1 | 1 | |
| 11 | SPACER | ABS | 439727-01 | 1 | 1 | 1 | 1 | 1 | 1 | 1 | |

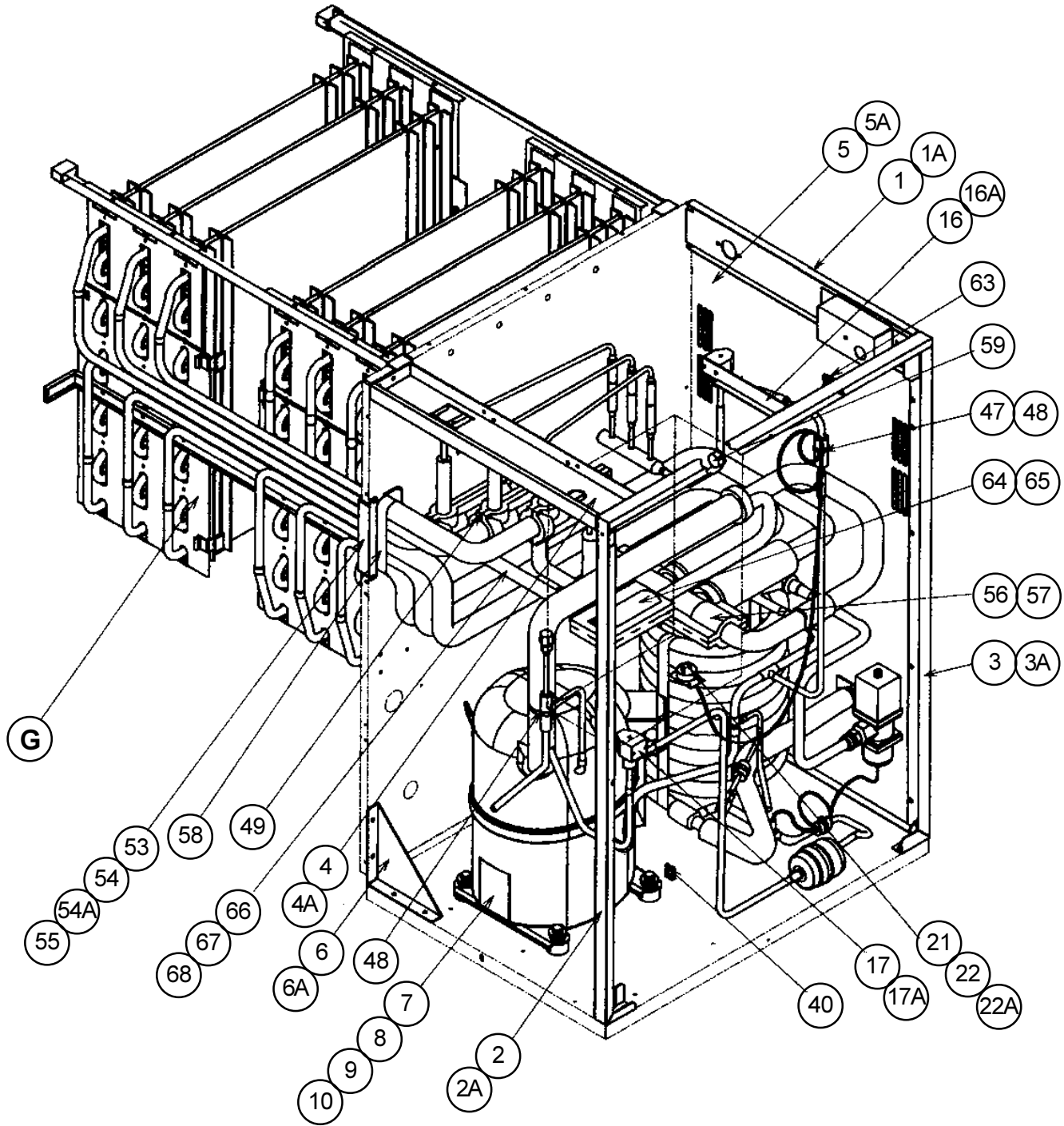
| MODEL: KM-2000SRF3, SRH3 TITLE: A. ICE CUBER ASSEMBLY | | | | | | | | | | | |
|---|-----------------------|--------------------------|-------------|-----------------|-----|------------|-----|-------------|-----|-----|--|
| INDEX NO. | DESCRIPTION | MATERIAL OR MODEL NUMBER | PART NUMBER | REQUIRED NUMBER | | | | | | | |
| | | | | KM-2000SRF3 | | | | KM-2000SRH3 | | | |
| | | | | H-0 | H-1 | J-1 K-0 | L-0 | M-0 | M-1 | M-2 | |
| 12 | BULB HOLDER (D) | ABS | 215644G01 | 1 | 1 | 1 | 1 | 1 | 1 | 1 | |
| 13 | FRONT PANEL - BRACKET | SS | 323903-01 | 1 | 1 | 1 | 1 | 1 | 1 | 1 | |
| 13A | T2 SCREW | 4X12, SS | 7P32-0412 | 3 | 3 | 3 | 3 | 3 | 3 | 3 | |
| 14 | SPACER | ABS | 324321-01 | 1 | 1 | 1 | 1 | 1 | 1 | 1 | |
| 15 | TOP INSULATION | ABS, PE | 324216G01 | 1 | 1 | 1 | 1 | 1 | 1 | 1 | |
| 16 | FRONT INSULATION | ABS, PE | 326041G01 | 1 | 1 | 1 | 1 | 1 | 1 | 1 | |
| 17 | THUMBSCREW | ABS, SS | 415949G01 | 1 | 1 | 1 | 1 | 1 | 1 | 1 | |
| 18 | SIDE PANEL (R) | SS | 215381G01 | 1 | 1 | 1 | | | | | |
| | | SS | 215381G02 | | | | 1 | 1 | 1 | 1 | |
| 18A | TRUSS HEAD SCREW | 4X8, SS | 7C32-0408 | 3 | 3 | 3 | 3 | 3 | 3 | 3 | |
| 19 | TOP PANEL | SS | 213669-02 | 1 | 1 | 1 | | | | | |
| | | SS | 2A2096-01 | | | | 1 | 1 | 1 | 1 | |
| 19A | TRUSS HEAD SCREW | 4X8, SS | 7C32-0408 | 3 | 3 | 3 | 3 | 3 | 3 | 3 | |
| 20 | FRONT PANEL | SS | 325848G01 | 1 | 1 | 1 | | | | | |
| | | SS | 3A1838G01 | | | | 1 | 1 | 1 | 1 | |
| 20A | TRUSS HEAD SCREW | 4X16, SS | 7C32-0416 | 2 | 2 | 2 | 2 | 2 | 2 | 2 | |
| 21 | BULB HOLDER (E) | GS | 439725-01 | 1 | 1 | 1 | 1 | 1 | 1 | 1 | |
| 21A | TRUSS HEAD SCREW | 4X12, SS | 7C32-0412 | 2 | 2 | 2 | 2 | 2 | 2 | 2 | |
| 22 | BULB HOLDER (F) | GS | 328743-01 | 1 | 1 | 1 | 1 | 1 | 1 | 1 | |
| 23 | BULB HOLDER (G) | GS | 439726-01 | 1 | 1 | 1 | 1 | 1 | 1 | 1 | |
| 23A | TRUSS HEAD SCREW | 4X6, SS | 7C32-0406 | 2 | 2 | 2 | 2 | 2 | 2 | 2 | |
| 24 | BUSHING | SR-30-1 | 420472-03 | 1 | 1 | 1 | 1 | 1 | 1 | 1 | |
| 25 | GASKET | L=1219 | 4A0808L02 | | | 1 | 1 | 1 | 1 | 1 | |
| | | | | | | | | | | | |
| | | | | | | | | | | | |
| | | | | | | | | | | | |
| | | | | | | | | | | | |
| | | | | | | | | | | | |

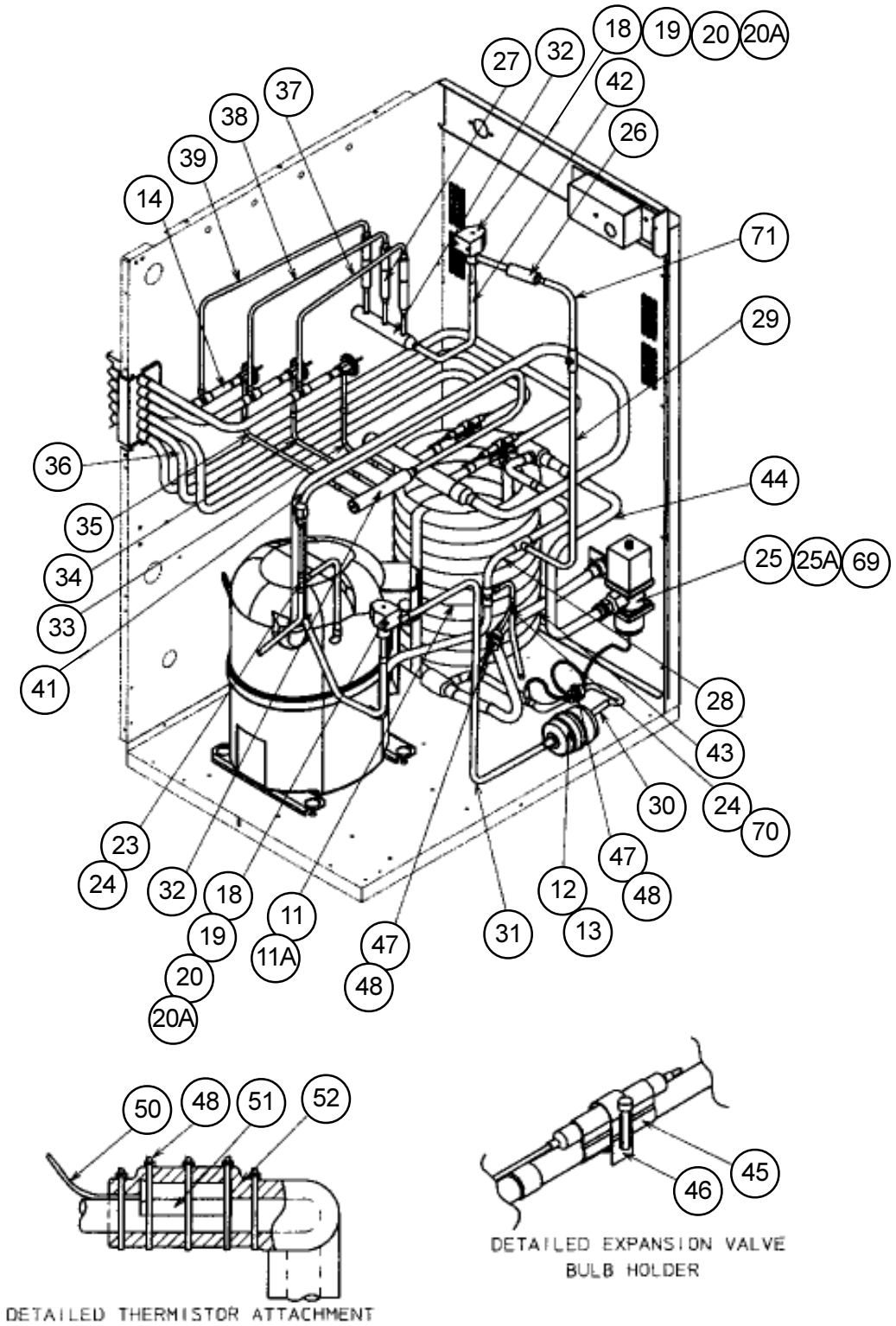


HA

KM-2000SWF3, KM-2000SWH3 B. REFRIGERATION CIRCUIT 2/2 H-0, H-1, J-0, K-0, L-0, M-0





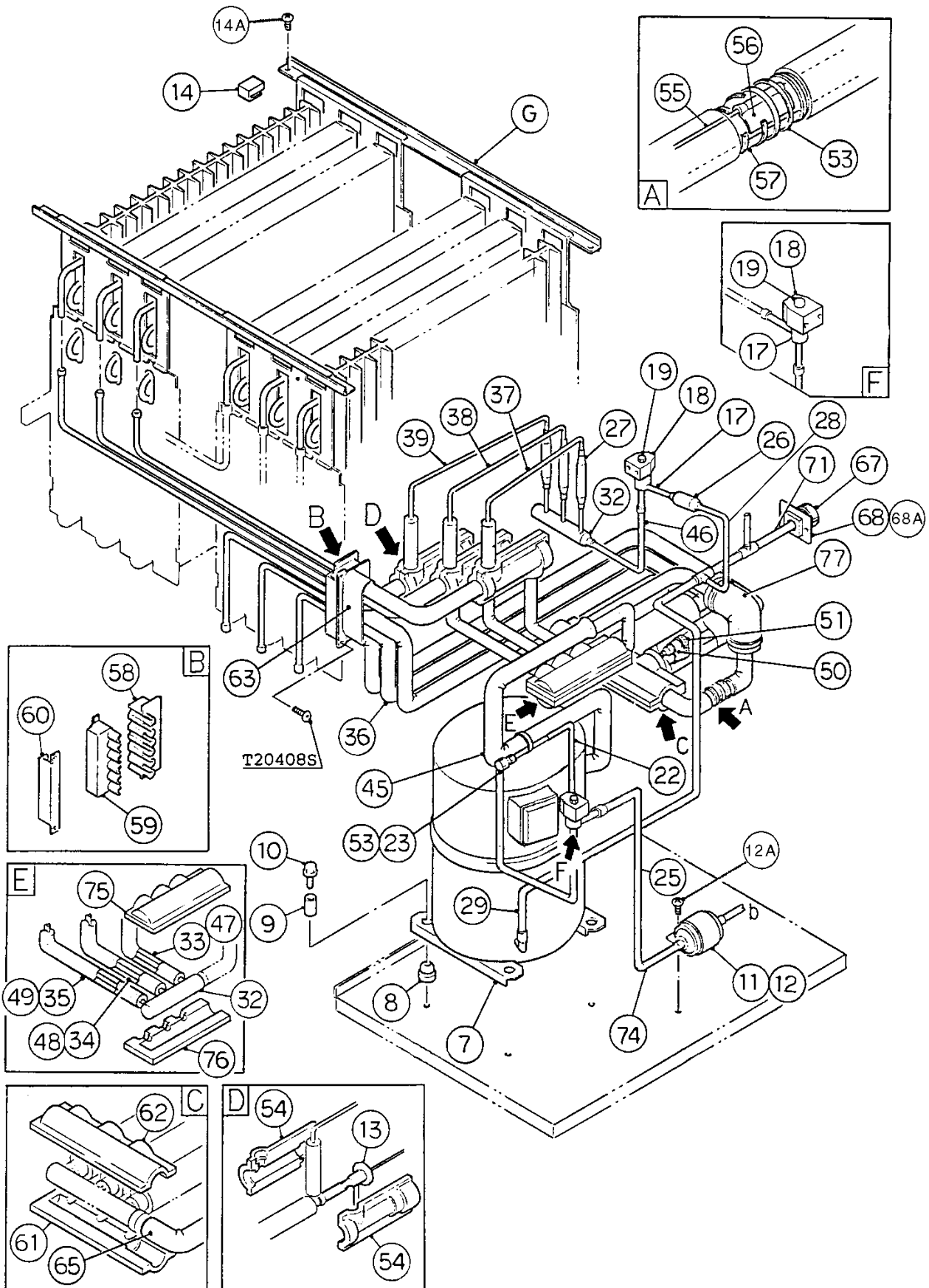


| MODEL: KM-2000SWF3, SWH3 TITLE: B. REFRIGERATION CIRCUIT | | | | | | | | | | | |
|--|-----------------------------|--------------------------|-------------|-----------------|-----|------------|-----|-------------|-----|-----|--|
| INDEX NO. | DESCRIPTION | MATERIAL OR MODEL NUMBER | PART NUMBER | REQUIRED NUMBER | | | | | | | |
| | | | | KM-2000SWF3 | | | | KM-2000SWH3 | | | |
| | | | | H-0 | H-1 | J-0 K-0 | L-0 | M-0 | M-1 | M-3 | |
| G | EVAPORATOR | - | 105103A01 | 1 | 1 | 1 | 1 | 1 | 1 | 1 | |
| 1 | REAR FRAME | GS | 439285G04 | 1 | 1 | 1 | 1 | 1 | 1 | 1 | |
| 1A | T2 SCREW | 4x8 | 7P31-0408 | 2 | 2 | 2 | 2 | 2 | 2 | 2 | |
| 2 | SIDE FRAME (A) | GS | 215375G01 | 1 | 1 | 1 | 1 | 1 | 1 | 1 | |
| 2A | T2 SCREW | 4x8 | 7P31-0408 | 3 | 3 | 3 | 3 | 3 | 3 | 3 | |
| 3 | SIDE FRAME (B) | GS | 215376G01 | 1 | 1 | 1 | 1 | 1 | 1 | 1 | |
| 3A | T2 SCREW | 4x8 | 7P31-0408 | 4 | 4 | 4 | 4 | 4 | 4 | 4 | |
| 4 | FRONT FRAME | GS | 325857-01 | 1 | 1 | 1 | 1 | 1 | 1 | 1 | |
| 4A | T2 SCREW | 4x8 | 7P31-0408 | 4 | 4 | 4 | 4 | 4 | 4 | 4 | |
| 5 | REAR PANEL | GS | 2A1112-01 | 1 | 1 | 1 | 1 | 1 | 1 | 1 | |
| 5A | T2 SCREW | 4x8 | 7P31-0408 | 10 | 10 | 10 | 10 | 10 | 10 | 10 | |
| 6 | BRACE | GS | 325858-01 | 1 | 1 | 1 | 1 | 1 | 1 | 1 | |
| 6A | T2 SCREW | 4x8 | 7P31-0408 | 4 | 4 | 4 | 4 | 4 | 4 | 4 | |
| 7 | COMPRESSOR | CS20-K6E-TF5-237 | 4A1419-01 | 1 | 1 | 1 | 1 | 1 | 1 | 1 | |
| 8 | GROMMET | 027-0167-00 | 434922-01 | 4 | 4 | 4 | 4 | 4 | 4 | 4 | |
| 9 | SPACER | 028-0188-02 | 434921-01 | 4 | 4 | 4 | 4 | 4 | 4 | 4 | |
| 10 | BOLT | 8 x 45 | 437889-01 | 4 | 4 | 4 | 4 | 4 | 4 | 4 | |
| 11 | CONDENSER - WATER-COOLED | - | 219382-02 | 1 | 1 | 1 | 1 | 1 | - | | |
| | | - | 2A2359G05 | | | | | | 1 | 1 | |
| 11A | HEX HEAD BOLT W/WASHER (LF) | 5X12 | 7B0130512 | 3 | 3 | 3 | 3 | 3 | 2 | 2 | |
| 12 | DRIER | C-053-S | 4A1461-01 | 1 | 1 | 1 | 1 | 1 | 1 | x1 | |
| | | - | 4A2663-01 | | | | | | | o1 | |
| 13 | DRIER BRACKET | GS | 445251-01 | 1 | 1 | 1 | 1 | 1 | 1 | - | |
| | NYLON TIE | - | 8911-0301 | | | | | | | 1 | |
| 13A | T2 SCREW | 4x8 | 7P31-0408 | 1 | 1 | 1 | 1 | 1 | 1 | - | |
| 14 | EXP. VALVE | HFE-10NHD-2 | 4A1414-01 | 3 | 3 | 3 | 3 | 3 | 3 | 3 | |
| 15 | FRAME SEAL | EPDM | 323925-01 | 4 | 4 | 4 | 4 | 4 | 4 | 4 | |
| 15A | T2 SCREW | 4x12, SS | 7P32-0412 | 6 | 6 | 6 | 6 | 6 | 6 | 6 | |

| MODEL: KM-2000SWF3, SWH3 TITLE: B. REFRIGERATION CIRCUIT | | | | | | | | | | | |
|--|------------------------------|--------------------------|-------------|-----------------|------------|-----|-------------|-----|-----|-----|--|
| INDEX NO. | DESCRIPTION | MATERIAL OR MODEL NUMBER | PART NUMBER | REQUIRED NUMBER | | | | | | | |
| | | | | KM-2000SWF3 | | | KM-2000SWH3 | | | | |
| | | | | H-0 | H-1 J-0 | K-0 | L-0 | M-0 | M-1 | M-3 | |
| 16 | HOT GAS VALVE BRACKET | GS | 442162-01 | 1 | 1 | 1 | 1 | 1 | 1 | 1 | |
| 16A | T2 SCREW | 4x8 | 7P31-0408 | 2 | 2 | 2 | 2 | 2 | 2 | 2 | |
| 17 | LINE VALVE BRACKET | GS | 4A1406-01 | 1 | 1 | 1 | 1 | 1 | 1 | 1 | |
| 17A | T2 SCREW | 4x8 | 7P31-0408 | 2 | 2 | 2 | 2 | 2 | 2 | 2 | |
| 18 | VALVE BODY | 70 | 440352-01 | 2 | 2 | 2 | 2 | 2 | 2 | 2 | |
| 19 | COIL - VALVE | ABS-25-1-HD-2 | 440353-01 | 2 | 2 | 2 | 2 | 2 | 2 | 2 | |
| 20 | BOLT | 4 X6 | 440353F01 | 2 | 2 | 2 | 2 | 2 | 2 | 2 | |
| 20A | TRUSS HEAD SCREW | 4X8 | 7C31-0408 | 4 | 4 | 4 | 4 | 4 | 4 | 4 | |
| 21 | PRESSURE SWITCH | ACB-2UB04 | 433441-05 | 1 | 1 | 1 | 1 | 1 | 1 | 1 | |
| 22 | PRESSURE SWITCH BRACKET | GS | 434938-01 | 1 | 1 | 1 | 1 | 1 | 1 | 1 | |
| 22A | T2 SCREW | 4x8 | 7P31-0408 | 1 | 1 | 1 | 1 | 1 | 1 | 1 | |
| 23 | COPPER TUBE - ACCESS VALVE | COPPER | 4A1497G01 | 1 | 1 | 1 | 1 | 1 | 1 | 1 | |
| 24 | ACCESS VALVE | TCJ-2F15-HD | 446715-01 | 2 | 2 | x2 | | 2 | x2 | | |
| | | - | 457729-01 | | | o2 | 2 | | o2 | 2 | |
| 25 | WATER REGULATOR | V46EB-20D | 4A1417-01 | 1 | 1 | 1 | 1 | 1 | 1 | 1 | |
| 25A | TRUSS HEAD SCREW | 4X6 | 7C31-0406 | 2 | 2 | 2 | 2 | 2 | 2 | 2 | |
| 26 | STRAINER | - | 441569-02 | 1 | 1 | 1 | 1 | 1 | 1 | 1 | |
| 27 | CHECK VALVE | SKC 30564 | 4A1373-01 | 3 | 3 | 3 | 3 | 3 | 3 | 3 | |
| 28 | COPPER TUBE (A) - HIGH SIDE | COPPER | 2A1105G01 | 1 | 1 | 1 | 1 | 1 | - | | |
| | | COPPER | 2A2481G01 | | | | | | 1 | 1 | |
| 29 | COPPER TUBE (B) - HIGH SIDE | COPPER | 332460-01 | 1 | 1 | 1 | 1 | 1 | - | | |
| | | COPPER | 2A344-01 | | | | | | 1 | 1 | |
| 30 | COPPER TUBE (C) - HIGH SIDE | COPPER | 4A1469G01 | 1 | 1 | 1 | 1 | 1 | - | | |
| | | COPPER | 4A2763G01 | | | | | | 1 | 1 | |
| 31 | COPPER TUBE (F) - HIGH SIDE | COPPER | 3A1104-01 | 1 | 1 | 1 | 1 | 1 | 1 | - | |
| | | COPPER | 3A2343-01 | | | | | | | 1 | |
| 32 | HEADER - S | 750489 | 441038-01 | 2 | 2 | 2 | 2 | 2 | 2 | 2 | |
| 33 | COPPER TUBE (A) - EXP. VALVE | COPPER | 4A1464-01 | 1 | 1 | 1 | 1 | 1 | 1 | 1 | |
| 34 | COPPER TUBE (B) - EXP. VALVE | COPPER | 4A1465-01 | 1 | 1 | 1 | 1 | 1 | 1 | 1 | |

| MODEL: KM-2000SWF3, SWH3 TITLE: B. REFRIGERATION CIRCUIT | | | | | | | | | | | |
|--|------------------------------|--------------------------|-------------|-----------------|------------|-----|-----|-------------|-----|-----|--|
| INDEX NO. | DESCRIPTION | MATERIAL OR MODEL NUMBER | PART NUMBER | REQUIRED NUMBER | | | | | | | |
| | | | | KM-2000SWF3 | | | | KM-2000SWH3 | | | |
| | | | | H-0 | H-1 J-0 | K-0 | L-0 | M-0 | M-1 | M-3 | |
| 35 | COPPER TUBE (C) - EXP. VALVE | COPPER | 4A1466-01 | 1 | 1 | 1 | 1 | 1 | 1 | 1 | |
| 36 | COPPER TUBE - LOW SIDE | COPPER | 106803G01 | 1 | 1 | 1 | 1 | 1 | 1 | 1 | |
| 37 | COPPER TUBE (A) - LOW SIDE | COPPER | 2A1108-01 | 1 | 1 | 1 | 1 | 1 | 1 | 1 | |
| 38 | COPPER TUBE (B) - LOW SIDE | COPPER | 2A1109-01 | 1 | 1 | 1 | 1 | 1 | 1 | 1 | |
| 39 | COPPER TUBE (C) - LOW SIDE | COPPER | 2A1110G01 | 1 | 1 | 1 | 1 | 1 | 1 | 1 | |
| 40 | WIRE SADDLE | - | 4A0448-02 | 3 | 3 | 3 | 3 | 3 | 3 | 3 | |
| 41 | HEAT EXCHANGER | COPPER | 1A0235G01 | 1 | 1 | 1 | 1 | 1 | 1 | 1 | |
| 42 | COPPER TUBE - HOT GAS | COPPER | 4A1463-01 | 1 | 1 | 1 | 1 | 1 | 1 | 1 | |
| 43 | COPPER TUBE (A) | COPPER | 3A0997G01 | 1 | 1 | 1 | 1 | 1 | - | | |
| | | COPPER | 3A2315G01 | | | | | | 1 | 1 | |
| 44 | COPPER TUBE (B) | COPPER | 4A1470G01 | 1 | 1 | 1 | 1 | 1 | - | | |
| | | COPPER | 4A2762G01 | | | | | | 1 | 1 | |
| 45 | HOLDER / EXP. VALVE - 3/8 | SS | 3A0107-01 | 3 | 3 | 3 | 3 | 3 | 3 | 3 | |
| 46 | CLAMP | SS | 443461-01 | 3 | 3 | 3 | 3 | 3 | 3 | 3 | |
| 47 | INSULATION TUBE | L=40 | 7762-1020 | 3 | 3 | 3 | 3 | 3 | 3 | 3 | |
| 48 | CABLE TIE | CV-200 | 7920-0010 | 14 | 14 | 14 | 14 | 14 | 14 | 14 | |
| 49 | EXP. VALVE COVER | PE FOAM | 3A0944-01 | 3 | 3 | 3 | 3 | 3 | 3 | 3 | |
| 50 | THERMISTOR | - | 429006-03 | 1 | 1 | 1 | 1 | 1 | 1 | 1 | |
| 51 | HOLDER - THERMISTOR | COPPER | 438247-01 | 1 | 1 | 1 | 1 | 1 | 1 | 1 | |
| 52 | INSULATION - THERMISTOR | PE FOAM | 427441-01 | 1 | 1 | 1 | 1 | 1 | 1 | 1 | |
| 53 | RUBBER INSULATION (A) | EPDM | 325864-01 | 1 | 1 | 1 | 1 | 1 | 1 | 1 | |
| 54 | RUBBER INSULATION (B) | EPDM | 325865-01 | 1 | 1 | 1 | 1 | 1 | 1 | 1 | |
| 54A | T2 SCREW | 4x8, SS | 7P32-0408 | 2 | 2 | 2 | 2 | 2 | 2 | 2 | |
| 55 | INSULATION HOLDER | SS | 325863-01 | 1 | 1 | 1 | 1 | 1 | 1 | 1 | |
| 56 | HEADER COVER (B1) | PE FOAM | 325862-01 | 1 | 1 | 1 | 1 | 1 | 1 | 1 | |
| 57 | HEADER COVER (B2) | PE FOAM | 325862-02 | 1 | 1 | 1 | 1 | 1 | 1 | 1 | |
| 58 | INSULATION | PE FOAM | 436671-02 | 1 | 1 | 1 | 1 | 1 | 1 | 1 | |
| 59 | BUSHING | OCB-500 | 428394-02 | 1 | 1 | 1 | 1 | 1 | 1 | 1 | |
| 60 | INSULATION TUBE | L=105 | 7762-1630 | 1 | 1 | 1 | 1 | 1 | - | | |

| MODEL: KM-2000SWF3, SWH3 TITLE: B. REFRIGERATION CIRCUIT | | | | | | | | | | |
|--|-----------------------------|--------------------------|-------------|-----------------|------------|-----|-------------|-----|-----|-----|
| INDEX NO. | DESCRIPTION | MATERIAL OR MODEL NUMBER | PART NUMBER | REQUIRED NUMBER | | | | | | |
| | | | | KM-2000SWF3 | | | KM-2000SWH3 | | | |
| | | | | H-0 | H-1 J-0 | K-0 | L-0 | M-0 | M-1 | M-3 |
| 61 | TERMINAL GASKET | - | 334084-01 | 1 | 1 | 1 | 1 | 1 | - | |
| 62 | WASHER | SS | 4A0655-03 | 1 | 1 | 1 | 1 | 1 | - | |
| 63 | CLAMP | - | 4A2338-01 | | | 1 | 1 | 1 | 1 | 1 |
| 64 | HEADER COVER (A1) | - | 325861-01 | | | | | | 1 | 1 |
| 65 | HEADER COVER (A2) | - | 325861-02 | | | | | | 1 | 1 |
| 66 | INSULATION TUBE | L=239 | 7762-1020 | | | | | | 1 | 1 |
| 67 | INSULATION TUBE | L=284 | 7762-1020 | | | | | | 1 | 1 |
| 68 | INSULATION TUBE | L=328 | 7762-1020 | | | | | | 1 | 1 |
| 69 | MALE CONNECTOR | - | 445180-01 | | | | | | 1 | 1 |
| 70 | COPPER TUBE (J) – HIGH SIDE | COPPER | 3A1105G01 | | | | | | 1 | 1 |
| 71 | COPPER TUBE (M) – HIGH SIDE | - | 4A2898G01 | | | | | | 1 | 1 |
| | | | | | | | | | | |
| | | | | | | | | | | |
| | | | | | | | | | | |
| | | | | | | | | | | |
| | | | | | | | | | | |
| | | | | | | | | | | |
| | | | | | | | | | | |
| | | | | | | | | | | |
| | | | | | | | | | | |
| | | | | | | | | | | |
| | | | | | | | | | | |
| | | | | | | | | | | |
| | | | | | | | | | | |
| | | | | | | | | | | |

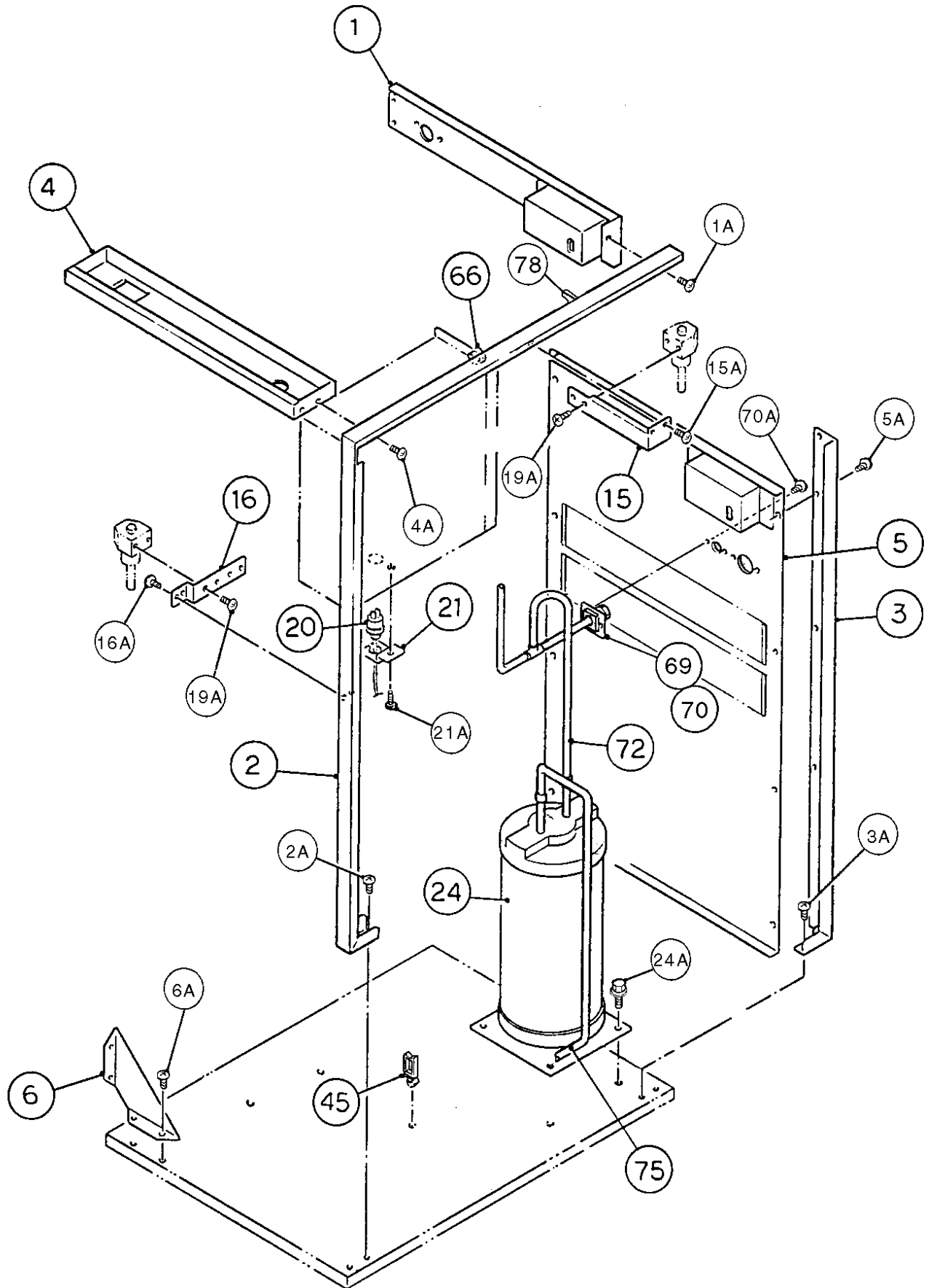


HA

KM-2000SRF3, KM-2000SRH3

B. REFRIGERATION CIRCUIT 2/2

H-0, H-1, J-1, K-0,
L-0, M-0, M-1, M-2

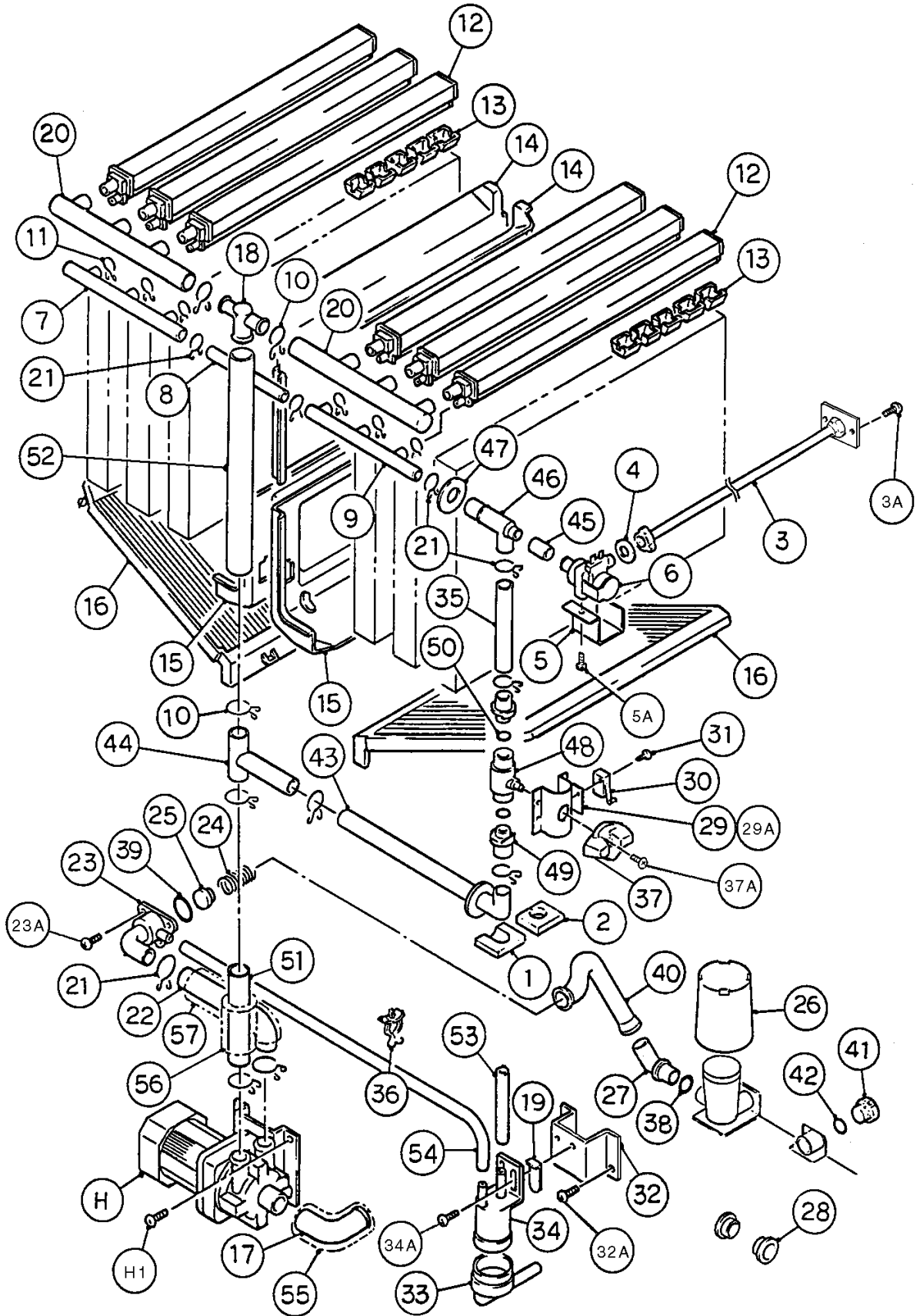


| MODEL: KM-2000SRF3, SRH3 TITLE: B. REFRIGERATION CIRCUIT | | | | | | | | | | | |
|--|-----------------------|--------------------------|-------------|-----------------|-----|------------|-----|-------------|-----|-----|--|
| INDEX NO. | DESCRIPTION | MATERIAL OR MODEL NUMBER | PART NUMBER | REQUIRED NUMBER | | | | | | | |
| | | | | KM-2000SRF3 | | | | KM-2000SRH3 | | | |
| | | | | H-0 | H-1 | J-1 K-0 | L-0 | M-0 | M-1 | M-2 | |
| G | EVAPORATOR | - | 105103A01 | 1 | 1 | 1 | 1 | 1 | 1 | 1 | |
| 1 | REAR FRAME | GS | 439285G04 | 1 | 1 | 1 | 1 | 1 | 1 | 1 | |
| 1A | T2 SCREW | 4X8 | 7P31-0408 | 2 | 2 | 2 | 2 | 2 | 2 | 2 | |
| 2 | SIDE FRAME (A) | GS | 215375G01 | 1 | 1 | 1 | 1 | 1 | 1 | 1 | |
| 2A | T2 SCREW | 4X8 | 7P31-0408 | 3 | 3 | 3 | 3 | 3 | 3 | 3 | |
| 3 | SIDE FRAME (B) | GS | 215376G01 | 1 | 1 | 1 | 1 | 1 | 1 | 1 | |
| 3A | T2 SCREW | 4X8 | 7P31-0408 | 4 | 4 | 4 | 4 | 4 | 4 | 4 | |
| 4 | FRONT FRAME | GS | 325857-01 | 1 | 1 | 1 | 1 | 1 | 1 | 1 | |
| 4A | T2 SCREW | 4X8 | 7P31-0408 | 4 | 4 | 4 | 4 | 4 | 4 | 4 | |
| 5 | REAR PANEL | GS | 215378G01 | 1 | 1 | 1 | 1 | 1 | 1 | 1 | |
| 5A | T2 SCREW | 4X8 | 7P31-0408 | 10 | 10 | 10 | 10 | 10 | 10 | 10 | |
| 6 | BRACE | GS | 325858-01 | 1 | 1 | 1 | 1 | 1 | 1 | 1 | |
| 7 | COMPRESSOR | C520-K6E-TF5-279 | 4A1419-02 | 1 | 1 | 1 | 1 | 1 | 1 | 1 | |
| 8 | GROMMET | 027-0167-00 | 434922-01 | 4 | 4 | 4 | 4 | 4 | 4 | 4 | |
| 9 | SPACER | 028-0188-02 | 434921-01 | 4 | 4 | 4 | 4 | 4 | 4 | 4 | |
| 10 | BOLT | 8 x 45 | 437889-01 | 4 | 4 | 4 | 4 | 4 | 4 | 4 | |
| 11 | DRIER | C-053-S | 4A1461-01 | 1 | 1 | 1 | 1 | 1 | x1 | | |
| | | | | | | | | | o1 | 1 | |
| 12 | DRIER BRACKET | GS | 445251-01 | 1 | 1 | 1 | 1 | 1 | - | | |
| | NYLON TIE | - | 8911-0301 | | | | | | 1 | 1 | |
| 12A | T2 SCREW | 4X8 | 7P31-0408 | 1 | 1 | 1 | 1 | 1 | - | | |
| 13 | EXPANSION VALVE | HFE-10NHD-1 | 4A1414-01 | 3 | 3 | 3 | 3 | 3 | 3 | 3 | |
| 14 | FRAME SEAL | EPDM | 323925-01 | 4 | 4 | 4 | 4 | 4 | 4 | 4 | |
| 14A | TRUSS HEAD SCREW | 4X12, SS | 7C32-0412 | 6 | 6 | 6 | 6 | 6 | 6 | 6 | |
| 15 | HOT GAS VALVE BRACKET | GS | 442162-01 | 1 | 1 | 1 | 1 | 1 | 1 | 1 | |
| 15A | T2 SCREW | 4X8 | 7P31-0408 | 2 | 2 | 2 | 2 | 2 | 2 | 2 | |
| 16 | LINE VALVE BRACKET | GS | 4A1406-01 | 1 | 1 | 1 | 1 | 1 | 1 | 1 | |
| 16A | T2 SCREW | 4X8 | 7P31-0408 | 2 | 2 | 2 | 2 | 2 | 2 | 2 | |
| 17 | VALVE BODY | 70 | 440352-01 | 2 | 2 | 2 | 2 | 2 | 2 | 2 | |

| MODEL: KM-2000SRF3, SRH3 TITLE: B. REFRIGERATION CIRCUIT | | | | | | | | | | |
|--|------------------------------|--------------------------|-------------|-----------------|------------|-----|-------------|-----|-----|-----|
| INDEX NO. | DESCRIPTION | MATERIAL OR MODEL NUMBER | PART NUMBER | REQUIRED NUMBER | | | | | | |
| | | | | KM-2000SRF3 | | | KM-2000SRH3 | | | |
| | | | | H-0 | H-1 J-1 | K-0 | L-0 | M-0 | M-1 | M-2 |
| 18 | COIL - VALVE | ABS-25-1-HD-2 | 440353-01 | 2 | 2 | 2 | 2 | 2 | 2 | 2 |
| 19 | BOLT | 4X6 | 440353F01 | 2 | 2 | 2 | 2 | 2 | 2 | 2 |
| 19A | TRUSS HEAD SCREW | 4X8 | 7C310408 | 4 | 4 | 4 | 4 | 4 | 4 | 4 |
| 20 | PRESSURE SWITCH | ACB-1UB09 | 433441-07 | 1 | 1 | 1 | 1 | 1 | 1 | 1 |
| 21 | PRESSURE SWITCH BRACKET | GS | 434938-01 | 1 | 1 | 1 | 1 | 1 | 1 | 1 |
| 21A | T2 SCREW | 4X8 | 7P31-0408 | 1 | 1 | 1 | 1 | 1 | 1 | 1 |
| 22 | COPPER TUBE - ACCESS VALVE | COPPER | 4A1497G01 | 1 | 1 | 1 | 1 | 1 | 1 | 1 |
| 23 | ACCESS VALVE | - | 446715-01 | 1 | 1 | x1 | 1 | 1 | 1 | 1 |
| | | - | 457729-01 | | | o1 | 1 | 1 | 1 | 1 |
| 24 | RECEIVER | RR MN WP450 | 438209-01 | 1 | 1 | 1 | 1 | 1 | 1 | 1 |
| 24A | HEX HEAD BOLT W/WASHER (LF) | 5X10 | 7B0130510 | 3 | 3 | 3 | 3 | 3 | 3 | 3 |
| 25 | COPPER TUBE - CAPILLARY | COPPER | 445174G01 | 1 | 1 | 1 | 1 | 1 | 1 | 1 |
| 26 | STRAINER | - | 441569-02 | 1 | 1 | 1 | 1 | 1 | 1 | 1 |
| 27 | CHECK VALVE | YCV5-2 | 425342-01 | 3 | 1 | 1 | 1 | 1 | 1 | 1 |
| 28 | COPPER TUBE (A) - HIGH SIDE | COPPER | 2A0527G02 | 1 | 1 | 1 | 1 | 1 | 1 | 1 |
| 29 | VALVE BODY | 24 | 440351-01 | 1 | 1 | 1 | 1 | 1 | 1 | 1 |
| 30 | COIL - VALVE | ADS-24HD-3 | 440354-01 | 1 | 1 | 1 | 1 | 1 | 1 | 1 |
| 31 | BOLT | 4x6 | 440354F01 | 1 | 1 | 1 | 1 | 1 | 1 | 1 |
| 32 | HEADER - S | 750489 | 441038-01 | 2 | 2 | 2 | 2 | 2 | 2 | 2 |
| 33 | COPPER TUBE (A) - EXP. VALVE | COPPER | 446515-01 | 1 | 1 | 1 | 1 | 1 | 1 | 1 |
| 34 | COPPER TUBE (B) - EXP. VALVE | COPPER | 446516-01 | 1 | 1 | 1 | 1 | 1 | 1 | 1 |
| 35 | COPPER TUBE (C) - EXP. VALVE | COPPER | 446517-01 | 1 | 1 | 1 | 1 | 1 | 1 | 1 |
| 36 | COPPER TUBE - LOW SIDE | COPPER | 106803G01 | 1 | 1 | 1 | 1 | 1 | 1 | 1 |
| 37 | COPPER TUBE (A) - LOW SIDE | COPPER | 326312G01 | 1 | 1 | 1 | 1 | 1 | 1 | 1 |
| 38 | COPPER TUBE (B) - LOW SIDE | COPPER | 326313G01 | 1 | 1 | 1 | 1 | 1 | 1 | 1 |
| 39 | COPPER TUBE (C) - LOW SIDE | COPPER | 326314G01 | 1 | 1 | 1 | 1 | 1 | 1 | 1 |
| 40 | INSULATION - COMPRESSOR TOP | VNN 2C1 (SOFT) | 447118-01 | 1 | 1 | 1 | 1 | 1 | 1 | 1 |

| MODEL: KM-2000SRF3, SRH3 TITLE: B. REFRIGERATION CIRCUIT | | | | | | | | | | | |
|--|--------------------------------|--------------------------|-------------|-----------------|-----|------------|-------------|-----|-----|-----|--|
| INDEX NO. | DESCRIPTION | MATERIAL OR MODEL NUMBER | PART NUMBER | REQUIRED NUMBER | | | | | | | |
| | | | | KM-2000SRF3 | | | KM-2000SRH3 | | | | |
| | | | | H-0 | H-1 | J-1 K-0 | L-0 | M-0 | M-1 | M-2 | |
| 41 | INSULATION - COMPRESSOR RIGHT | VNN 2C1 (SOFT) | 447119-01 | 1 | 1 | 1 | 1 | 1 | 1 | 1 | |
| 42 | INSULATION - COMPRESSOR CENTER | VNN 2C1 (SOFT) | 447120-01 | 1 | 1 | 1 | 1 | 1 | 1 | 1 | |
| 43 | INSULATION - COMPRESSOR LEFT | VNN 2C1 (SOFT) | 447121-01 | 1 | 1 | 1 | 1 | 1 | 1 | 1 | |
| 44 | WIRE SADDLE | VWS4238-C | 4A0338-02 | 3 | 3 | 3 | 3 | 3 | 3 | 3 | |
| 45 | HEAT EXCHANGER | COPPER | 106804G01 | 1 | 1 | 1 | 1 | 1 | 1 | 1 | |
| 46 | COPPER TUBE - HOT GAS | COPPER | 4A0804-01 | 1 | 1 | 1 | 1 | 1 | 1 | 1 | |
| 47 | INSULATION TUBE | L=219 | 7762-1020 | 1 | 1 | 1 | 1 | 1 | 1 | 1 | |
| 48 | INSULATION TUBE | L=264 | 7762-1020 | 1 | 1 | 1 | 1 | 1 | 1 | 1 | |
| 49 | INSULATION TUBE | L=308 | 7762-1020 | 1 | 1 | 1 | 1 | 1 | 1 | 1 | |
| 50 | HOLDER / EXP. VALVE - 3/8 | SS | 3A0107-01 | 3 | 3 | 3 | 3 | 3 | 3 | 3 | |
| 51 | CLAMP | SS | 443461-01 | 3 | 3 | 3 | 3 | 3 | 3 | 3 | |
| 52 | INSULATION TUBE | L=40 | 7762-1020 | 3 | 3 | 3 | 3 | 3 | 3 | 3 | |
| 53 | CABLE TIE | CV-200 | 7920-0010 | 11 | 11 | 11 | 11 | 11 | 11 | 11 | |
| 54 | EXP. VALVE COVER | PE FOAM | 3A0944-01 | 3 | 3 | 3 | 3 | 3 | 3 | 3 | |
| 55 | THERMISTOR | - | 429006-03 | 1 | 1 | 1 | 1 | 1 | 1 | 1 | |
| 56 | HOLDER - THERMISTOR | COPPER | 438247-01 | 1 | 1 | 1 | 1 | 1 | 1 | 1 | |
| 57 | INSULATION - THERMISTOR | PE FOAM | 427441-01 | 1 | 1 | 1 | 1 | 1 | 1 | 1 | |
| 58 | RUBBER INSULATION (A) | EPDM | 325864-01 | 1 | 1 | 1 | 1 | 1 | 1 | 1 | |
| 59 | RUBBER INSULATION (B) | EPDM | 325865-01 | 1 | 1 | 1 | 1 | 1 | 1 | 1 | |
| 60 | INSULATION HOLDER | SS | 325863-01 | 1 | 1 | 1 | 1 | 1 | 1 | 1 | |
| 60A | T2 SCREW | 4X8, SS | 7P32-0408 | 2 | 2 | 2 | 2 | 2 | 2 | 2 | |
| 61 | HEADER COVER (B1) | PE FOAM | 325862-01 | 1 | 1 | 1 | 1 | 1 | 1 | 1 | |
| 62 | HEADER COVER (B2) | PE FOAM | 325862-02 | 1 | 1 | 1 | 1 | 1 | 1 | 1 | |
| 63 | INSULATION | PE FOAM | 436671-02 | 1 | 1 | 1 | 1 | 1 | 1 | 1 | |
| 64 | BUSHING | OCB-500 | 428394-02 | 1 | 1 | 1 | 1 | 1 | 1 | 1 | |
| 65 | INSULATION TUBE | L=105 | 7762-1630 | 1 | 1 | 1 | 1 | 1 | 1 | 1 | |

| MODEL: KM-2000SRF3, SRH3 TITLE: B. REFRIGERATION CIRCUIT | | | | | | | | | | |
|--|-----------------------------|--------------------------|-------------|-----------------|------------|-----|-------------|-----|-----|-----|
| INDEX NO. | DESCRIPTION | MATERIAL OR MODEL NUMBER | PART NUMBER | REQUIRED NUMBER | | | | | | |
| | | | | KM-2000SRF3 | | | KM-2000SRH3 | | | |
| | | | | H-0 | H-1 J-1 | K-0 | L-0 | M-0 | M-1 | M-2 |
| 66 | TERMINAL GASKET | - | 334084-01 | 1 | 1 | 1 | 1 | 1 | 1 | 1 |
| 67 | COUPLING | COPPER | 434136G01 | 1 | 1 | 1 | 1 | 1 | 1 | 1 |
| 68 | TUBE HOLDER (L) | GS | 438245-01 | 1 | 1 | 1 | 1 | 1 | 1 | 1 |
| 68A | T2 SCREW | 4X8 | 7P31-0408 | 2 | 2 | 2 | 2 | 2 | 2 | 2 |
| 69 | COUPLING | COPPER | 433751G01 | 1 | 1 | 1 | 1 | 1 | 1 | 1 |
| 70 | TUBE HOLDER (S) | GS | 438246-01 | 1 | 1 | 1 | 1 | 1 | 1 | 1 |
| 70A | T2 SCREW | 4X8 | 7P31-0408 | 2 | 2 | 2 | 2 | 2 | 2 | 2 |
| 71 | COPPER TUBE (B) - HIGH SIDE | COPPER | 445178G01 | 1 | 1 | 1 | 1 | 1 | 1 | 1 |
| 72 | COPPER TUBE (D) - HIGH SIDE | COPPER | 331009G01 | 1 | 1 | 1 | 1 | 1 | 1 | 1 |
| 73 | COPPER TUBE (E) - HIGH SIDE | COPPER | 3A0992-01 | 1 | 1 | 1 | 1 | 1 | 1 | 1 |
| 74 | COPPER TUBE (F) - HIGH SIDE | COPPER | 3A1104-01 | 1 | 1 | 1 | 1 | 1 | - | |
| | | COPPER | 3A2336-01 | | | | | | 1 | 1 |
| 75 | HEADER COVER (A1) | PE FOAM | 325861-01 | 1 | 1 | 1 | 1 | 1 | 1 | 1 |
| 76 | HEADER COVER (A2) | PE FOAM | 325861-02 | 1 | 1 | 1 | 1 | 1 | 1 | 1 |
| 77 | INSULATION TUBE | L=150 | 7762-3555 | 1 | 1 | 1 | 1 | 1 | 1 | 1 |
| 78 | CLAMP | - | 4A2338-01 | | | 1 | 1 | 1 | 1 | 1 |
| | | | | | | | | | | |
| | | | | | | | | | | |
| | | | | | | | | | | |
| | | | | | | | | | | |
| | | | | | | | | | | |
| | | | | | | | | | | |
| | | | | | | | | | | |
| | | | | | | | | | | |
| | | | | | | | | | | |
| | | | | | | | | | | |
| | | | | | | | | | | |
| | | | | | | | | | | |
| | | | | | | | | | | |



| MODEL: KM-2000SWF3, SRF3, SWH3, SRH3 TITLE: C. WATER CIRCUIT | | | | | | | | | | | | |
|--|-----------------------|--------------------------|-------------|-----------------|-----|-----|-------------|-----|-----|-----|--|--|
| INDEX NO. | DESCRIPTION | MATERIAL OR MODEL NUMBER | PART NUMBER | REQUIRED NUMBER | | | | | | | | |
| | | | | KM-2000SWF3 | | | KM-2000SWH3 | | | | | |
| | | | | H-0 | H-1 | K-0 | L-0 | M-1 | M-2 | M-3 | | |
| H | PUMP MOTOR ASSEMBLY | (S-0730) | 215692A01 | 1 | 1 | 1 | 1 | 1 | 1 | | | |
| H1 | TRUSS HEAD SCREW | 5X8, SS | 7C32-0508 | 2 | 2 | 2 | 2 | 2 | 2 | | | |
| 1 | CORNER INSULATION (A) | PE FOAM | 439376-01 | 1 | 1 | 1 | 1 | 1 | 1 | | | |
| 2 | CORNER INSULATION (B) | PE FOAM | 439392-01 | 1 | 1 | 1 | 1 | 1 | 1 | | | |
| 3 | WATER SUPPLY PIPE | COPPER | 4A0768G03 | 1 | 1 | 1 | 1 | 1 | 1 | | | |
| 3A | T2 SCREW | 4X8 | 7P31-0408 | 2 | 2 | 2 | 2 | 2 | 2 | | | |
| 4 | RUBBER GASKET | SI.R | 413854-03 | 1 | 1 | 1 | 1 | 1 | 1 | | | |
| 5 | WATER VALVE BRACKET | GS | 321443-01 | 1 | 1 | 1 | 1 | 1 | 1 | | | |
| 5A | T2 SCREW | 4X8 | 7P31-0408 | 1 | 1 | 1 | 1 | 1 | 1 | | | |
| 6 | WATER VALVE | J248-106 | 3U0136-01 | 1 | 1 | 1 | 1 | 1 | 1 | | | |
| 7 | DISTRIBUTOR HOSE (A) | EPDM | 325738-01 | 1 | 1 | 1 | 1 | 1 | 1 | | | |
| 8 | JOINT PIPE | ABS | 439297-01 | 1 | 1 | 1 | 1 | 1 | 1 | | | |
| 9 | DISTRIBUTOR HOSE (B) | EPDM | 325738-02 | 1 | 1 | 1 | 1 | 1 | 1 | | | |
| 10 | HOSE CLAMP | SS, 32MM | 427443-09 | 4 | 4 | 9 | 9 | 9 | 9 | | | |
| 11 | HOSE CLAMP | SS, 13.5MM | 427443-07 | 6 | 6 | 6 | 6 | 6 | 6 | | | |
| 12 | SPRAY TUBE | ABS | 437049G01 | 6 | 6 | 6 | 6 | 6 | 6 | | | |
| 13 | SPRAY GUIDE (A) | PE | 208586-01 | 18 | 18 | 18 | 18 | 18 | 18 | | | |
| 14 | SEPARATOR (A) | ABS | 215046-01 | 2 | 2 | 2 | 2 | 2 | 2 | | | |
| 15 | SEPARATOR (B) | SS | 2A0100-01 | 2 | 2 | 2 | 2 | 2 | 2 | | | |
| 16 | CUBE GUIDE | ABS | 214243-01 | 2 | 2 | 2 | 2 | 2 | 2 | | | |
| 17 | HOSE (A) | EPDM | 435091-01 | 1 | 1 | 1 | 1 | 1 | 1 | | | |
| 18 | DISTRIBUTOR (A) | ABS | 439266-01 | 1 | 1 | 1 | 1 | 1 | 1 | | | |
| 19 | FLOAT SWITCH STOP | SS | 4A0137-01 | 1 | 1 | 1 | 1 | 1 | 1 | | | |
| 20 | DISTRIBUTOR HOSE (C) | EPDM | 325739-01 | 2 | 2 | 2 | 2 | 2 | 2 | | | |
| 21 | HOSE CLAMP | SS, 25MM | 427443-03 | 9 | 9 | 9 | 9 | 9 | 9 | | | |
| 22 | HOSE (B) | EPDM | 325867-01 | 1 | 1 | 1 | 1 | 1 | 1 | | | |
| 23 | VALVE HOUSING - DRAIN | ABS | 323613-01 | 1 | 1 | 1 | 1 | 1 | 1 | | | |
| 23A | TRUSS HEAD SCREW | 4X10, SS | 7C32-0410 | 3 | 3 | 3 | 3 | 3 | 3 | | | |

| MODEL: KM-2000SWF3, SRF3, SWH3, SRH3 TITLE: C. WATER CIRCUIT | | | | | | | | | | | |
|--|--------------------------|--------------------------|-------------|-----------------|-----|---|---|-------------|---|--|--|
| INDEX NO. | DESCRIPTION | MATERIAL OR MODEL NUMBER | PART NUMBER | REQUIRED NUMBER | | | | | | | |
| | | | | KM-2000SWF3 | | | | KM-2000SWH3 | | | |
| | | | | KM-2000SRF3 | | | | KM-2000SRH3 | | | |
| H-0 | H-1 | J-0 | L-0 | M-1 | M-2 | | | | | | |
| | | J-1 | M-0 | | M-3 | | | | | | |
| | | K-0 | | | | | | | | | |
| 24 | SPRING | SS | 322110-01 | 1 | 1 | 1 | 1 | 1 | 1 | | |
| 25 | VALVE SHEET | EPDM | 433705-01 | 1 | 1 | 1 | 1 | 1 | 1 | | |
| 26 | OVERFLOW CAP | PE | 325866-01 | 1 | 1 | 1 | 1 | 1 | 1 | | |
| 27 | JOINT - OVERFLOW | ABS | 323923-02 | 1 | 1 | 1 | 1 | 1 | 1 | | |
| 28 | BUSHING | - | 420470-06 | 2 | 2 | 2 | 2 | 2 | 2 | | |
| 29 | VALVE HOLDER | GS | 3A1178-01 | 1 | 1 | 1 | 1 | 1 | 1 | | |
| 29A | TRUSS HEAD SCREW | 4X8 | 7C31-0408 | 3 | 3 | 3 | 3 | 3 | 3 | | |
| 30 | MICRO SWITCH | V3L-111-08 | 4A0365-01 | 1 | 1 | 1 | 1 | x1 | | | |
| | | - | 4A2546-01 | | | | | o1 | 1 | | |
| 31 | TAPPING SCREW | 3x14 | 431415-02 | 2 | 2 | 2 | 2 | 2 | 2 | | |
| 32 | FLOAT SWITCH BRACKET | SS | 3A0449-01 | 1 | 1 | 1 | 1 | 1 | 1 | | |
| 32A | T2 SCREW | 4X8, SS | 7P32-0408 | 2 | 2 | 2 | 2 | 2 | 2 | | |
| 33 | CONNECTOR - FLOAT SWITCH | EPDM | 3A1325-03 | 1 | 1 | 1 | 1 | 1 | 1 | | |
| 34 | FLOAT SWITCH | 163795 | 4A0886-01 | 1 | 1 | 1 | 1 | 1 | 1 | | |
| 34A | TRUSS HEAD SCREW | 4X10, SS | 7C32-0410 | 2 | 2 | 2 | 2 | 2 | 2 | | |
| 35 | JOINT HOSE | EPDM | 439309-01 | 1 | 1 | 1 | 1 | 1 | 1 | | |
| 36 | CLAMP | NO.4253 | 427902-05 | 1 | 1 | 1 | 1 | 1 | 1 | | |
| 37 | HANDLE | JH1352 | 215383-01 | 1 | 1 | 1 | 1 | 1 | 1 | | |
| 37A | T2 SCREW | 4X8 | 7P31-0408 | 1 | 1 | 1 | 1 | 1 | 1 | | |
| 38 | "O" RING | 1AP18 | 7611-P018 | 1 | 1 | 1 | 1 | 1 | 1 | | |
| 39 | "O" RING | 1AG35 | 7611-G035 | 1 | 1 | 1 | 1 | 1 | 1 | | |
| 40 | DRAIN HOSE | EPDM | 325869-01 | 1 | 1 | 1 | 1 | 1 | 1 | | |
| 41 | DRAIN | AC | 309246-01 | 1 | 1 | 1 | 1 | 1 | 1 | | |
| 42 | "O" RING | 1AP15 | 7611-P015 | 1 | 1 | 1 | 1 | 1 | 1 | | |
| 43 | BYPASS HOSE | EPDM | 439237-02 | 1 | 1 | 1 | 1 | 1 | 1 | | |
| 44 | DISTRIBUTOR (C) | ABS | 439238-01 | 1 | 1 | 1 | 1 | 1 | 1 | | |
| 45 | JOINT HOSE | EPDM | 439296-01 | 1 | 1 | 1 | 1 | 1 | 1 | | |
| 46 | DISTRIBUTOR (B) | ABS | 439239-01 | 1 | 1 | 1 | 1 | 1 | 1 | | |

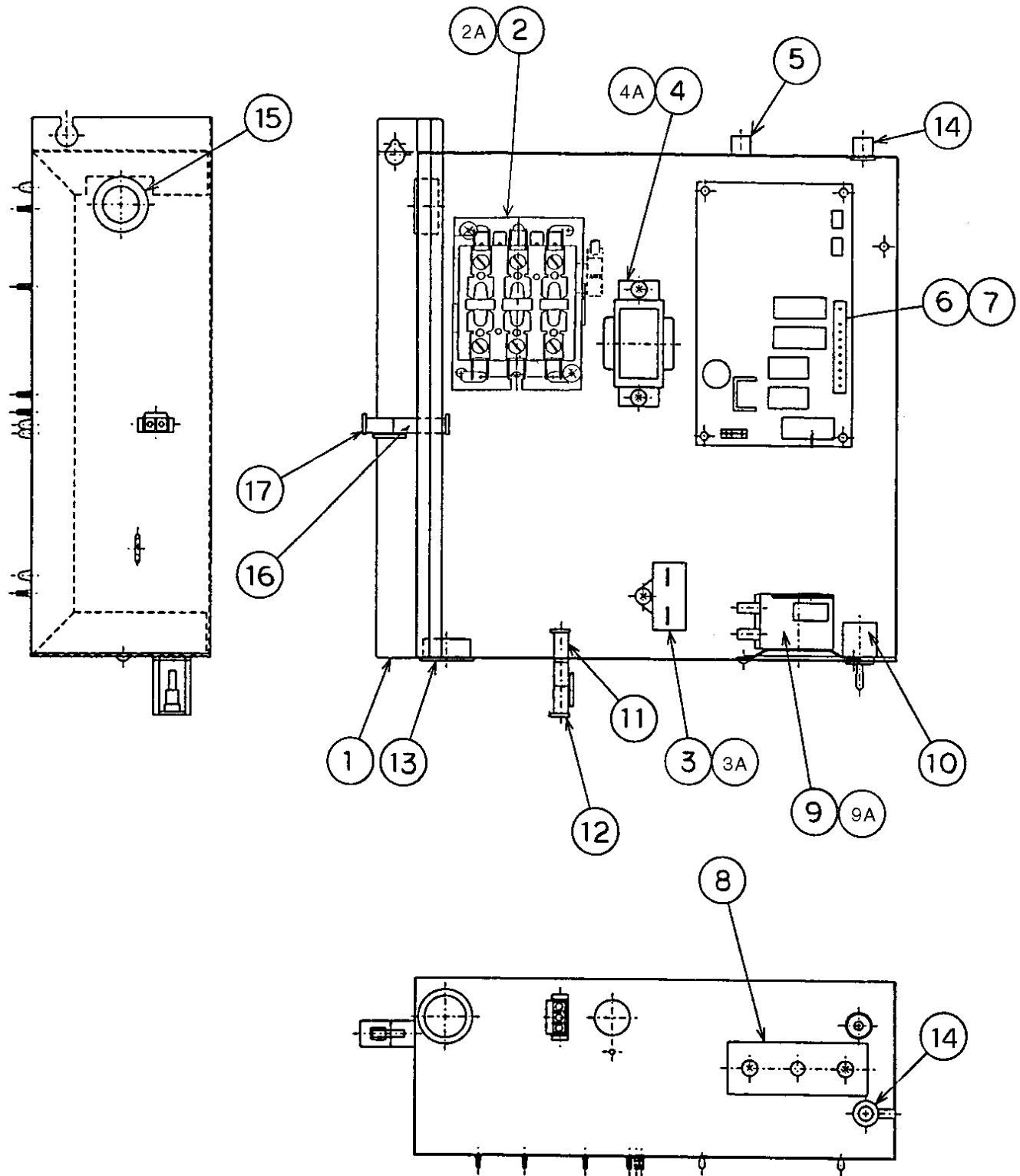
HA

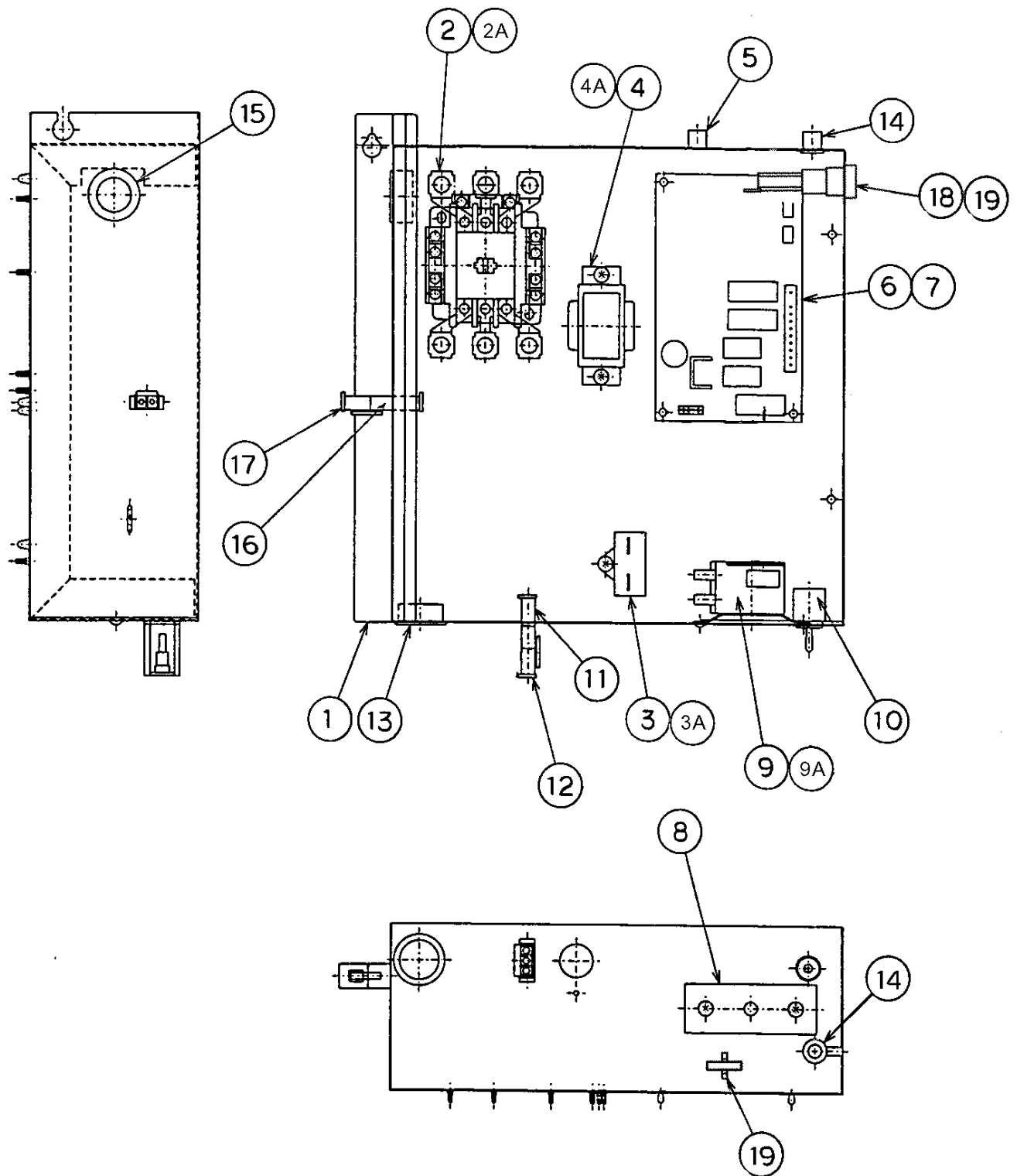
| MODEL: KM-2000SWF3, SRF3, SWH3, SRH3 TITLE: C. WATER CIRCUIT | | | | | | | | | | | |
|--|-----------------|--------------------------|-------------|-----------------|-----|-----|-----|-------------|-----|--|--|
| INDEX NO. | DESCRIPTION | MATERIAL OR MODEL NUMBER | PART NUMBER | REQUIRED NUMBER | | | | | | | |
| | | | | KM-2000SWF3 | | | | KM-2000SWH3 | | | |
| | | | | KM-2000SRF3 | | | | KM-2000SRH3 | | | |
| H-0 | H-1 | J-0 | L-0 | M-1 | M-2 | J-1 | M-0 | M-3 | K-0 | | |
| 47 | FLANGE | EPDM | 439267-02 | 1 | 1 | 1 | 1 | 1 | 1 | | |
| 48 | BALL VALVE | PVC | 439293-01 | 1 | 1 | 1 | 1 | 1 | 1 | | |
| 49 | MALE ADAPTOR | ABS | 325826-01 | 2 | 2 | 2 | 2 | 2 | 2 | | |
| 50 | "O" RING | 1AP20 | 7611-P020 | 2 | 2 | 2 | 2 | 2 | 2 | | |
| 51 | VINYL HOSE | L=230 | 7716-2732 | 1 | 1 | 1 | 1 | 1 | 1 | | |
| 52 | VINYL HOSE | L=550 | 7716-2732 | 1 | 1 | 1 | 1 | 1 | 1 | | |
| 53 | SILICONE HOSE | L=190 | 773013812 | 1 | 1 | 1 | 1 | 1 | 1 | | |
| 54 | SILICONE HOSE | L=430 | 773013896 | 1 | 1 | 1 | 1 | 1 | 1 | | |
| 55 | INSULATION HOSE | L=120 | 7762-3555 | 1 | 1 | 1 | 1 | 1 | 1 | | |
| 56 | INSULATION HOSE | L=130 | 7762-3555 | 1 | 1 | 1 | 1 | 1 | 1 | | |
| 57 | INSULATION HOSE | L=1200 | 7762-3555 | 1 | 1 | 1 | 1 | 1 | 1 | | |
| | | | | | | | | | | | |
| | | | | | | | | | | | |
| | | | | | | | | | | | |
| | | | | | | | | | | | |
| | | | | | | | | | | | |
| | | | | | | | | | | | |
| | | | | | | | | | | | |
| | | | | | | | | | | | |
| | | | | | | | | | | | |
| | | | | | | | | | | | |
| | | | | | | | | | | | |
| | | | | | | | | | | | |
| | | | | | | | | | | | |
| | | | | | | | | | | | |
| | | | | | | | | | | | |
| | | | | | | | | | | | |
| | | | | | | | | | | | |
| | | | | | | | | | | | |
| | | | | | | | | | | | |
| | | | | | | | | | | | |
| | | | | | | | | | | | |

HA

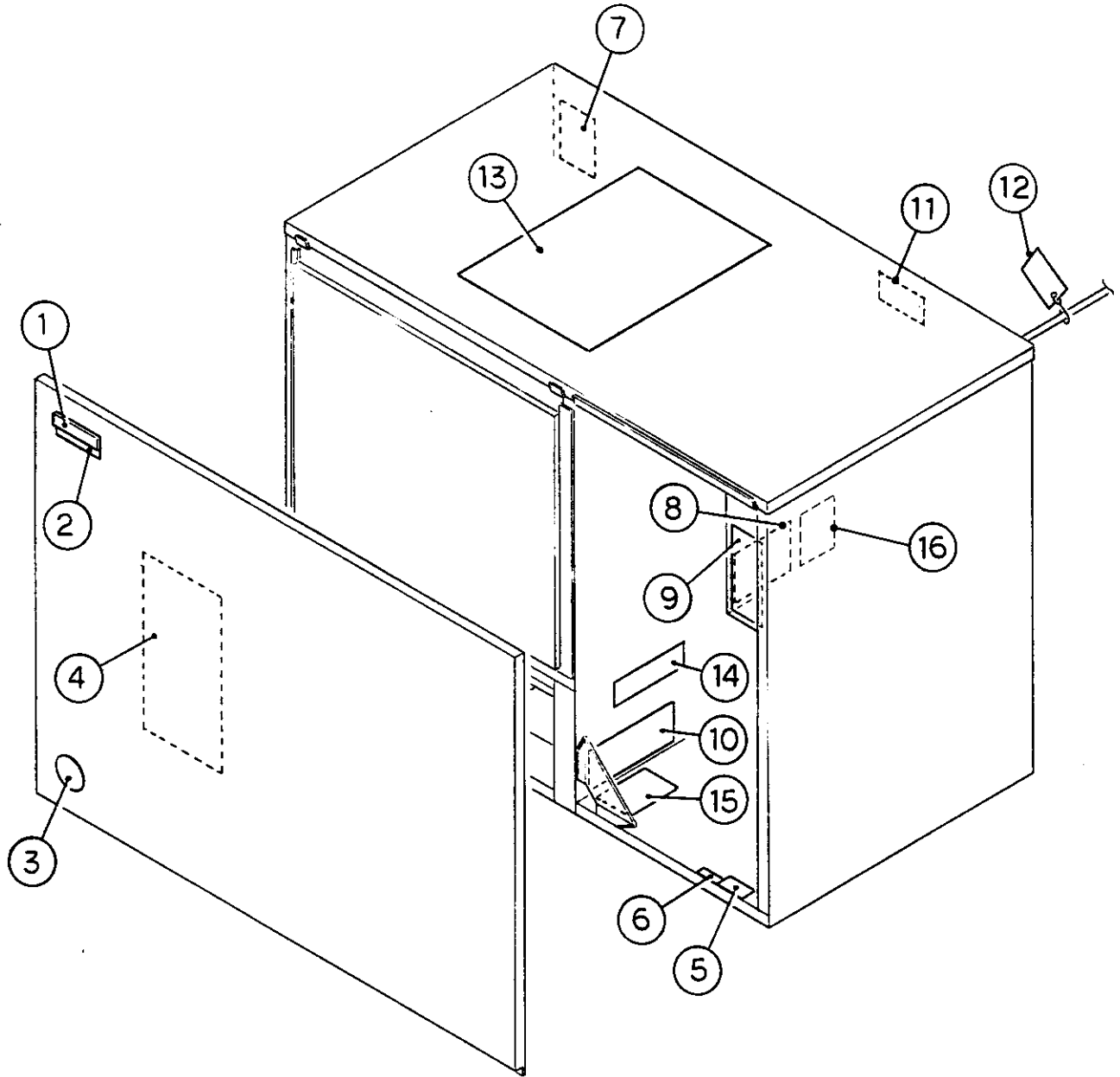
KM-2000SWF3, SRF3, SWH3, SRH3 D. CONTROL BOX ASSEMBLY

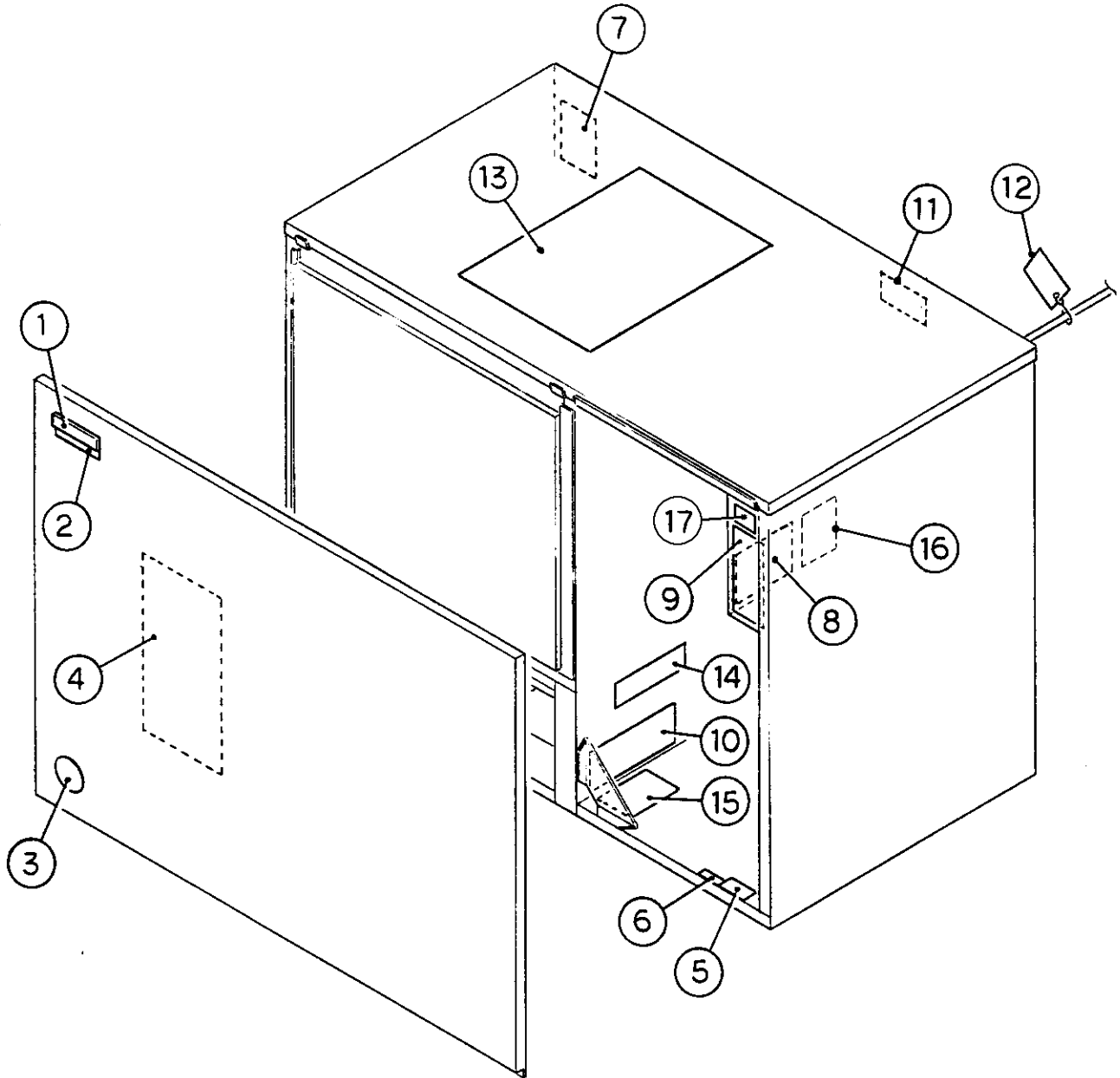
H-0, H-1, J-0, J-1,
K-0, L-0, M-0, M-1



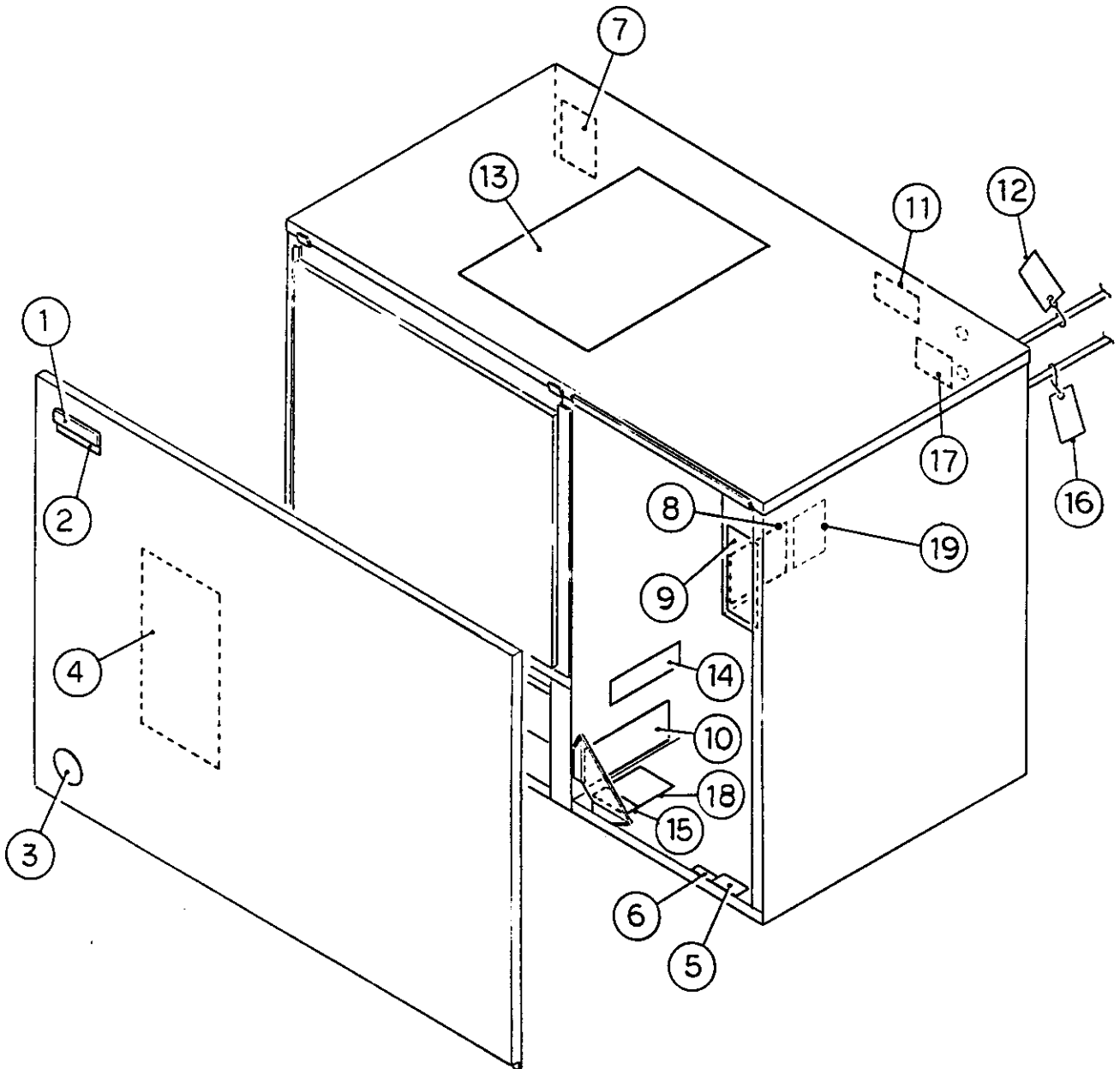


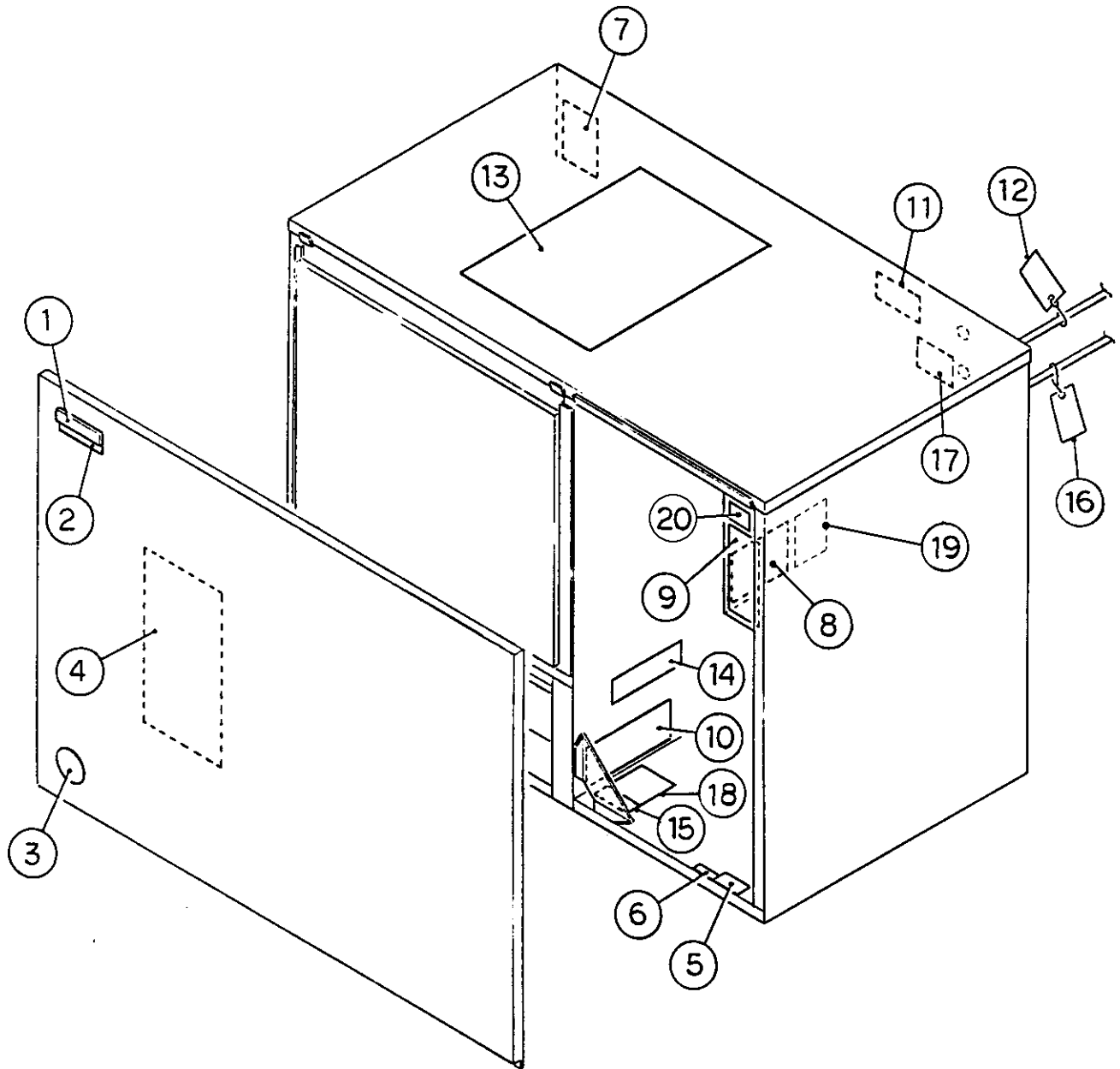
| MODEL: KM-2000SWF3, SRF3, SWH3, SRH3 TITLE: D. CONTROL BOX ASSEMBLY | | | | | | | | | | | | |
|---|-----------------------|--------------------------|-------------|----------------------------|-----|-------------------|----------------------------|-----|------------|--|--|--|
| INDEX NO. | DESCRIPTION | MATERIAL OR MODEL NUMBER | PART NUMBER | REQUIRED NUMBER | | | | | | | | |
| | | | | KM-2000SWF3 KM-2000SRF3 | | | KM-2000SWH3 KM-2000SRH3 | | | | | |
| | | | | H-0 | H-1 | J-0 J-1 K-0 | L-0 M-0 | M-1 | M-2 M-3 | | | |
| 1 | CONTROL BOX | GS | 2A1082G02 | 1 | 1 | 1 | 1 | 1 | - | | | |
| | | GS | 2A2524G01 | | | | | | 1 | | | |
| 2 | MAGNETIC CONTACTOR | A77-309040A-226 | 4A0794-01 | 1 | 1 | 1 | 1 | 1 | 1 | | | |
| 2A | TRUSS HEAD SCREW | 4X12, SS | 7C32-0412 | 2 | 2 | 2 | 2 | 2 | 2 | | | |
| 3 | CAPACITOR | 250V. AC, 10MFD | 443192-01 | 1 | 1 | 1 | 1 | 1 | 1 | | | |
| 3A | T2 SCREW | 4X10 | 7P31-0410 | 2 | 2 | 2 | 2 | 2 | 2 | | | |
| 4 | TRANSFORMER | 26D285H | 3A0172-01 | 1 | 1 | 1 | 1 | 1 | 1 | | | |
| 4A | T2 SCREW | 4X8 | 7P31-0408 | 2 | 2 | 2 | 2 | 2 | 2 | | | |
| 5 | BUSHING | OCB-875 | 428394-04 | 1 | 1 | 1 | 1 | 1 | 1 | | | |
| 6 | CONTROLLER BOARD | HOSHIZAKI-001A | 2A1410-01 | 1 | 1 | 1 | 1 | 1 | 1 | | | |
| 7 | BOARD SUPPORT | CBLS37-M | 4A0336-03 | 4 | 4 | 4 | 4 | 4 | 4 | | | |
| 8 | CONTROL LABEL | PES FILM | 4A1758-01 | 1 | 1 | 1 | 1 | 1 | 1 | | | |
| 9 | THERMOSTAT | A30-3842-00 | 4A0824-02 | 1 | 1 | 1 | 1 | 1 | x1 | | | |
| | | - | 4A2879-02 | | | | | | o1 | | | |
| 9A | TRUSS HEAD SCREW | 4X6 | 7C310406 | 2 | 2 | 2 | 2 | 2 | 2 | | | |
| 10 | TOGGLE SWITCH | 7563K6 | 443119-01 | 1 | 1 | 1 | 1 | 1 | 1 | | | |
| 11 | 3P PLUG HOUSING | 3191-03P | 412832-06 | 1 | 1 | 1 | 1 | 1 | 1 | | | |
| 12 | 3P RECEPTACLE HOUSING | 3191-03PR1 | 412831-06 | 1 | 1 | 1 | 1 | 1 | 1 | | | |
| 13 | BUSHING | SB-1093-15 | 420470-03 | 1 | 1 | 1 | 1 | 1 | 1 | | | |
| 14 | BUSHING | OCB-500 | 428394-02 | 2 | 2 | 2 | 2 | 2 | 2 | | | |
| 15 | BUSHING | SB-1093-13 | 420470-12 | 1 | 1 | 1 | 1 | 1 | 1 | | | |
| 16 | 2P PLUG HOUSING | 3190-02P (RED) | 412832-09 | 1 | 1 | 1 | 1 | 1 | 1 | | | |
| 17 | 2P RECEPTACLE HOUSING | 3191-02PR1 (RED) | 412831-09 | 1 | 1 | 1 | 1 | 1 | 1 | | | |
| 18 | FUSE HOLDER | HTB-921 | 4A0892-01 | | | | | | 1 | | | |
| 19 | FUSE | AGC-10 | 4A0893-07 | | | | | | 2 | | | |
| | | | | | | | | | | | | |
| | | | | | | | | | | | | |





| MODEL: KM-2000SWF3, SWH3 TITLE: E. LABEL LOCATION | | | | | | | | | | | |
|---|--------------------------------------|--------------------------|-------------|-----------------|-----|-----|-----|-------------|-----|---|--|
| INDEX NO. | DESCRIPTION | MATERIAL OR MODEL NUMBER | PART NUMBER | REQUIRED NUMBER | | | | | | | |
| | | | | KM-2000SWF3 | | | | KM-2000SWH3 | | | |
| | | | | H-0 | H-1 | J-0 | L-0 | M-1 | M-3 | | |
| | | | | H-1 | | K-0 | M-0 | | | | |
| J-0 | | | | | | | | | | | |
| 1 | EMBLEM | ABS | 4A0560-01 | 1 | 1 | 1 | 1 | 1 | 1 | | |
| 2 | MODEL NUMBER LABEL | PETP FILM | 4A1233-06 | 1 | 1 | 1 | | | | | |
| | | PETP FILM | 4A2356-06 | | | | 1 | 1 | 1 | | |
| 3 | LABEL - PENGUIN (R) | PETP FILM | 4A0526-01 | 1 | 1 | 1 | 1 | 1 | 1 | | |
| 4 | MAINTENANCE LABEL | PVC FILM | 326275-01 | 1 | 1 | 1 | 1 | 1 | 1 | | |
| 5 | CAUTION LABEL (K) | PVC FILM | 439150-01 | 1 | 1 | 1 | 1 | 1 | 1 | | |
| 6 | LABEL - R404A | PES FILM | 4A0960-01 | 1 | 1 | 1 | 1 | 1 | 1 | | |
| 7 | NAMEPLATE | PES FILM | 4A1478-01 | 1 | 1 | 1 | | | | | |
| | | PES FILM | 4A2360-01 | | | | 1 | 1 | 1 | | |
| 8 | WIRING LABEL | PVC FILM | 3A0991-01 | 1 | 1 | 1 | 1 | 1 | - | | |
| | | PVC FILM | 3A2394-01 | | | | | | | 1 | |
| 9 | MANUAL LABEL | PVC FILM | 324476-01 | 1 | 1 | 1 | 1 | 1 | 1 | | |
| 10 | MANUAL LABEL - BIN CONTROL | PVC FILM | 324477-01 | 1 | 1 | 1 | 1 | 1 | 1 | | |
| 11 | INSTRUCTION LABEL | PVC FILM | 444575-01 | 1 | 1 | 1 | 1 | 1 | 1 | | |
| 12 | TAG - WARNING: ELECTRICAL CONNECTION | PAPER | 438479-01 | 1 | 1 | 1 | 1 | 1 | 1 | | |
| 13 | INSTRUCTION SHEET | PAPER | 2A1123-01 | 1 | 1 | 1 | | | | | |
| | | PAPER | 2A2135-01 | | | | 1 | 1 | 1 | | |
| 14 | OPERATION LABEL - VALVE | PVC FILM | 439541-01 | 1 | 1 | 1 | 1 | 1 | 1 | | |
| 15 | RATING LABEL | PES FILM | 4A1637-01 | 1 | 1 | 1 | | | | | |
| | | PES FILM | 4A2361-01 | | | | 1 | 1 | 1 | | |
| 16 | LABEL - CONTROL BOARD | PVC FILM | 3A1272-01 | 1 | 1 | 1 | 1 | 1 | 1 | | |
| 17 | LABEL - FUSE | - | 4A2817-01 | | | | | | | 1 | |
| | | | | | | | | | | | |
| | | | | | | | | | | | |
| | | | | | | | | | | | |



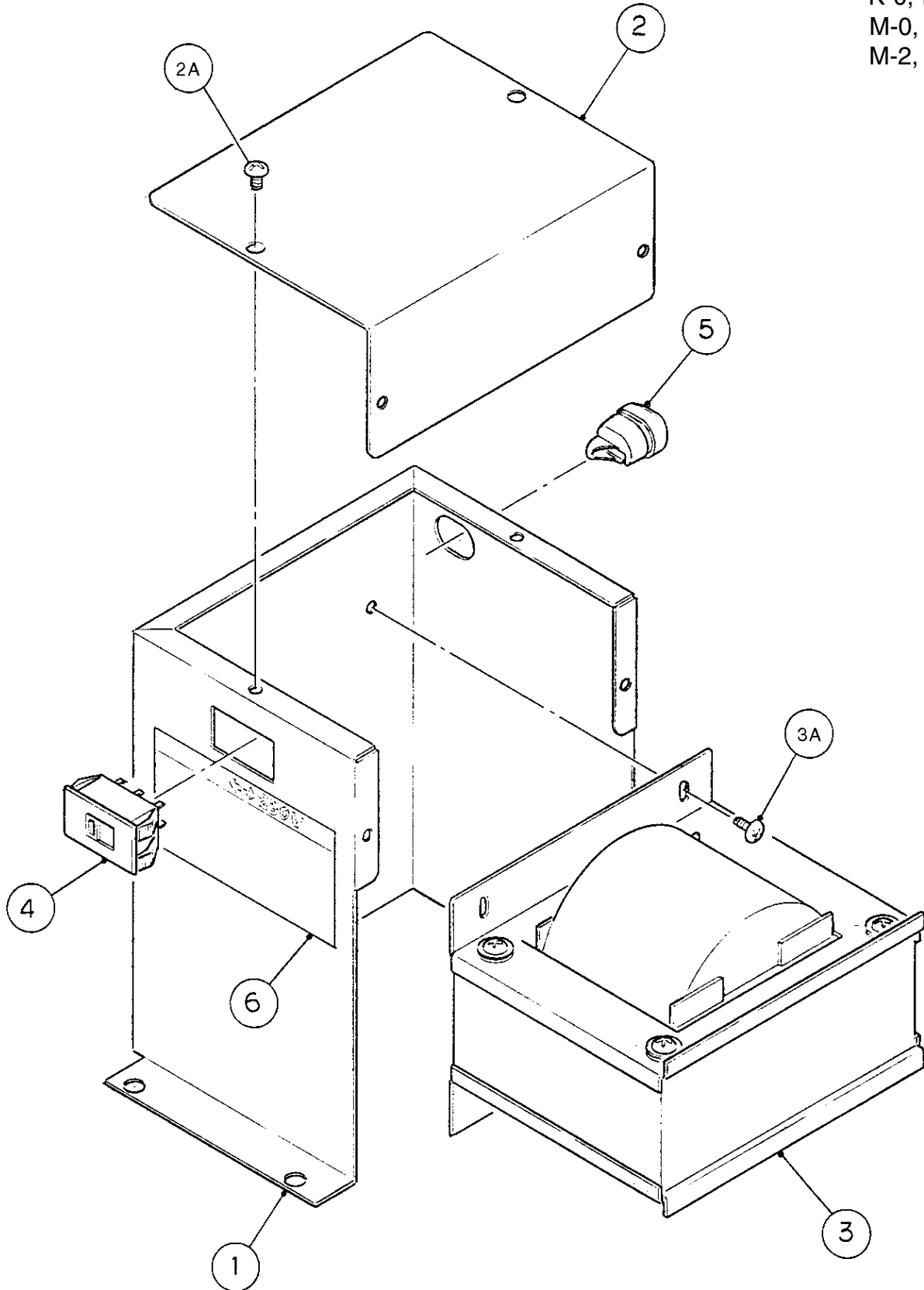


| MODEL: KM-2000SRF3, SRH3 TITLE: E. LABEL LOCATION | | | | | | | | | | | |
|---|---|--------------------------|-------------|-----------------|-----|-----|------------|-------------|-----|--|--|
| INDEX NO. | DESCRIPTION | MATERIAL OR MODEL NUMBER | PART NUMBER | REQUIRED NUMBER | | | | | | | |
| | | | | KM-2000SRF3 | | | | KM-2000SRH3 | | | |
| | | | | H-0 H-1 | J-1 | K-0 | L-0 M-0 | M-1 | M-2 | | |
| 1 | EMBLEM | ABS | 4A0560-01 | 1 | 1 | 1 | 1 | 1 | 1 | | |
| 2 | MODEL NUMBER LABEL | PETP FILM | 4A1233-07 | 1 | 1 | 1 | | | | | |
| | | PETP FILM | 4A2356-07 | | | | 1 | 1 | 1 | | |
| 3 | LABEL - PENGUIN (R) | PETP FILM | 4A0526-01 | 1 | 1 | 1 | 1 | 1 | 1 | | |
| 4 | MAINTENANCE LABEL | PVC FILM | 326275-01 | 1 | 1 | 1 | 1 | 1 | 1 | | |
| 5 | CAUTION LABEL (K) | PVC FILM | 439150-01 | 1 | 1 | 1 | 1 | 1 | 1 | | |
| 6 | LABEL - R404A | PES FILM | 440362-01 | 1 | 1 | 1 | 1 | 1 | 1 | | |
| 7 | NAMEPLATE | PES FILM | 4A1479-01 | 1 | 1 | 1 | | | | | |
| | | PES FILM | 4A2358-01 | | | | 1 | 1 | 1 | | |
| 8 | WIRING LABEL | PVC FILM | 3A0991-01 | 1 | 1 | 1 | 1 | 1 | - | | |
| | | PVC FILM | 3A2394-01 | | | | | | 1 | | |
| 9 | MANUAL LABEL | PVC FILM | 324476-01 | 1 | 1 | 1 | 1 | 1 | 1 | | |
| 10 | MANUAL LABEL - BIN CONTROL | PVC FILM | 326255-01 | 1 | 1 | 1 | | | | | |
| | | PVC FILM | 324477-01 | | | | 1 | 1 | 1 | | |
| 11 | INSTRUCTION LABEL | PVC FILM | 444575-01 | 1 | 1 | 1 | 1 | 1 | 1 | | |
| 12 | TAG - WARNING: ELECTRICAL CONNECTION | PAPER | 438479-01 | 1 | 1 | 1 | 1 | 1 | 1 | | |
| 13 | INSTRUCTION SHEET | PAPER | 2A1123-01 | 1 | 1 | 1 | 1 | 1 | 1 | | |
| | | PAPER | 2A2135-01 | | | | 1 | 1 | 1 | | |
| 14 | OPERATION LABEL - VALVE | PVC FILM | 439541-01 | 1 | 1 | 1 | 1 | 1 | 1 | | |
| 15 | LABEL - CHARGE | PES FILM | 4A1399-04 | 1 | 1 | 1 | 1 | 1 | 1 | | |
| 16 | TAG - FAN MOTOR LEADS | PAPER | 4A1494-01 | 1 | 1 | 1 | 1 | 1 | 1 | | |
| 17 | CAUTION - REMOTE LABEL | PVC FILM | 4A1491-01 | 1 | 1 | 1 | 1 | 1 | 1 | | |
| 18 | RATING LABEL | PES FILM | 4A1636-01 | 1 | 1 | 1 | | | | | |
| | | PES FILM | 4A2359-01 | | | | 1 | 1 | 1 | | |
| 19 | LABEL - CONTROL BOARD | PVC FILM | 3A1272-01 | 1 | 1 | 1 | 1 | 1 | 1 | | |
| 20 | LABEL - FUSE | - | 4A2817-01 | | | | | | 1 | | |
| | | | | | | | | | | | |

HA

KM-2000SWF3, SRF3, SWH3, SRH3 F. TRANSFORMER BOX ASSEMBLY

H-0, H-1,
J-0, J-1,
K-0, L-0,
M-0, M-1,
M-2, M-3



HA

MODEL: **KM-2000SWF3, SRF3, SWH3, SRH3** TITLE: **F. TRANSFORMER BOX ASSEMBLY**

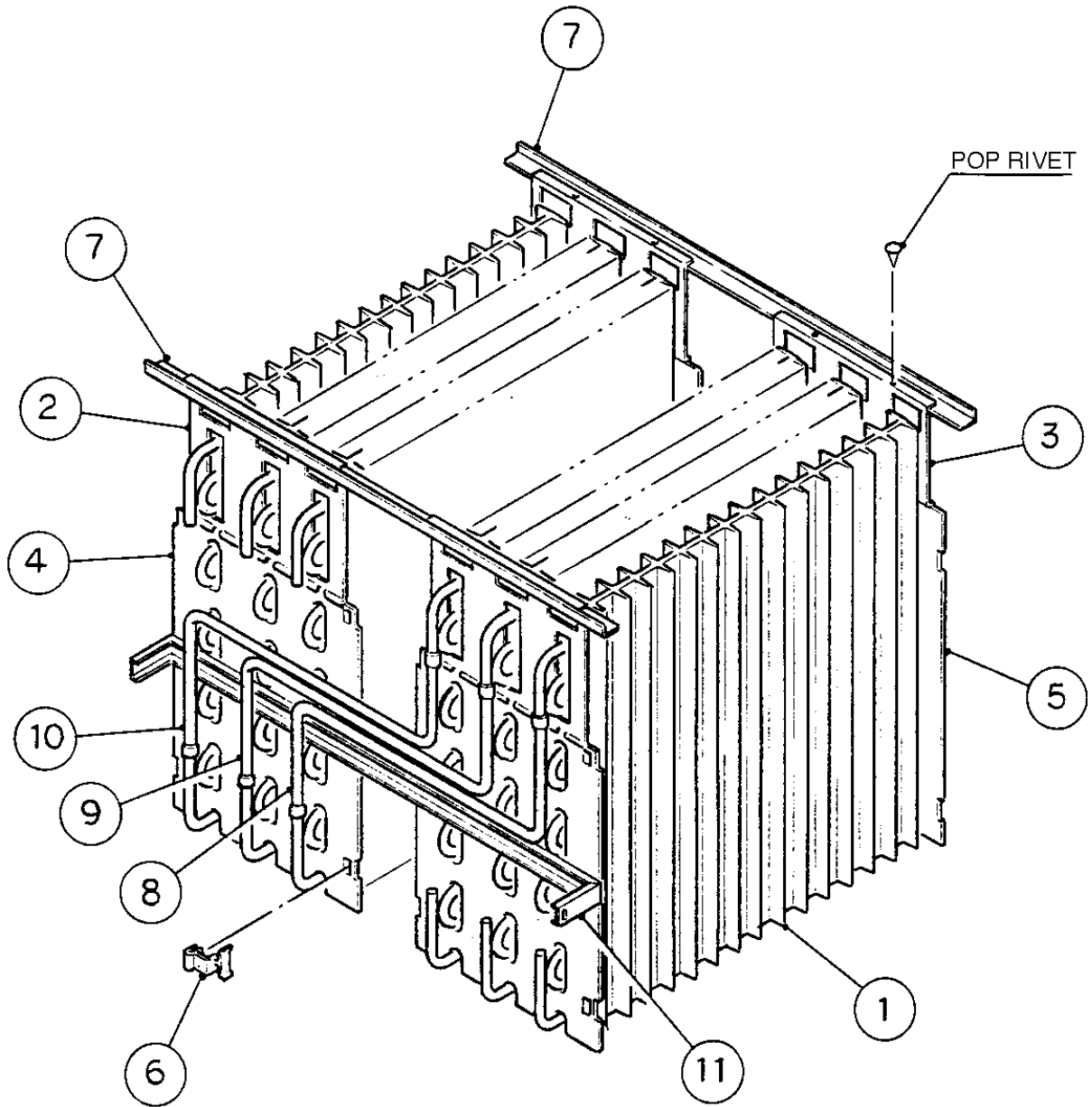
| INDEX NO. | DESCRIPTION | MATERIAL OR MODEL NUMBER | PART NUMBER | REQUIRED NUMBER | | | | | | | |
|-----------|---------------------------|--------------------------|-------------|-----------------|-----|---|---|-------------|---|--|--|
| | | | | KM-2000SWF3 | | | | KM-2000SWH3 | | | |
| | | | | KM-2000SRF3 | | | | KM-2000SRH3 | | | |
| H-0 | J-0 | K-0 | L-0 | M-0 | M-2 | | | | | | |
| H-1 | J-1 | | | M-1 | M-3 | | | | | | |
| 1 | TRANSFORMER BOX | - | 3A1101-01 | 1 | 1 | 1 | 1 | 1 | 1 | | |
| 2 | TRANSFORMER BOX COVER | - | 438467-01 | 1 | 1 | 1 | 1 | 1 | 1 | | |
| 2A | T2 SCREW | 4X8 | 7P31-0408 | 4 | 4 | 4 | 4 | 4 | 4 | | |
| 3 | TRANSFORMER | BE24543001 | 4A0817-01 | 1 | 1 | 1 | 1 | 1 | 1 | | |
| 3A | TRUSS HEAD SCREW | 4X8 | 7C31-0408 | 4 | 4 | 4 | 4 | 4 | 4 | | |
| 4 | SLIDE SWITCH | SE1022-SD-PM-F-R-HK-A | 4A1477-01 | 1 | 1 | 1 | 1 | 1 | 1 | | |
| 5 | BUSHING | SR-30-1 | 420472-03 | 1 | 1 | 1 | 1 | 1 | 1 | | |
| 6 | MANUAL LABEL - TAP SWITCH | PVC FILM | 439423-01 | 1 | 1 | 1 | 1 | 1 | 1 | | |
| | | | | | | | | | | | |
| | | | | | | | | | | | |
| | | | | | | | | | | | |
| | | | | | | | | | | | |
| | | | | | | | | | | | |
| | | | | | | | | | | | |
| | | | | | | | | | | | |
| | | | | | | | | | | | |
| | | | | | | | | | | | |
| | | | | | | | | | | | |
| | | | | | | | | | | | |
| | | | | | | | | | | | |
| | | | | | | | | | | | |
| | | | | | | | | | | | |
| | | | | | | | | | | | |
| | | | | | | | | | | | |
| | | | | | | | | | | | |
| | | | | | | | | | | | |
| | | | | | | | | | | | |
| | | | | | | | | | | | |
| | | | | | | | | | | | |
| | | | | | | | | | | | |

HA

KM-2000SWF3, SRF3, SWH3, SRH3

G. EVAPORATOR

H-0, H-1, J-0,
J-1, K-0, L-0,
M-0, M-1, M-2,
M-3



HA

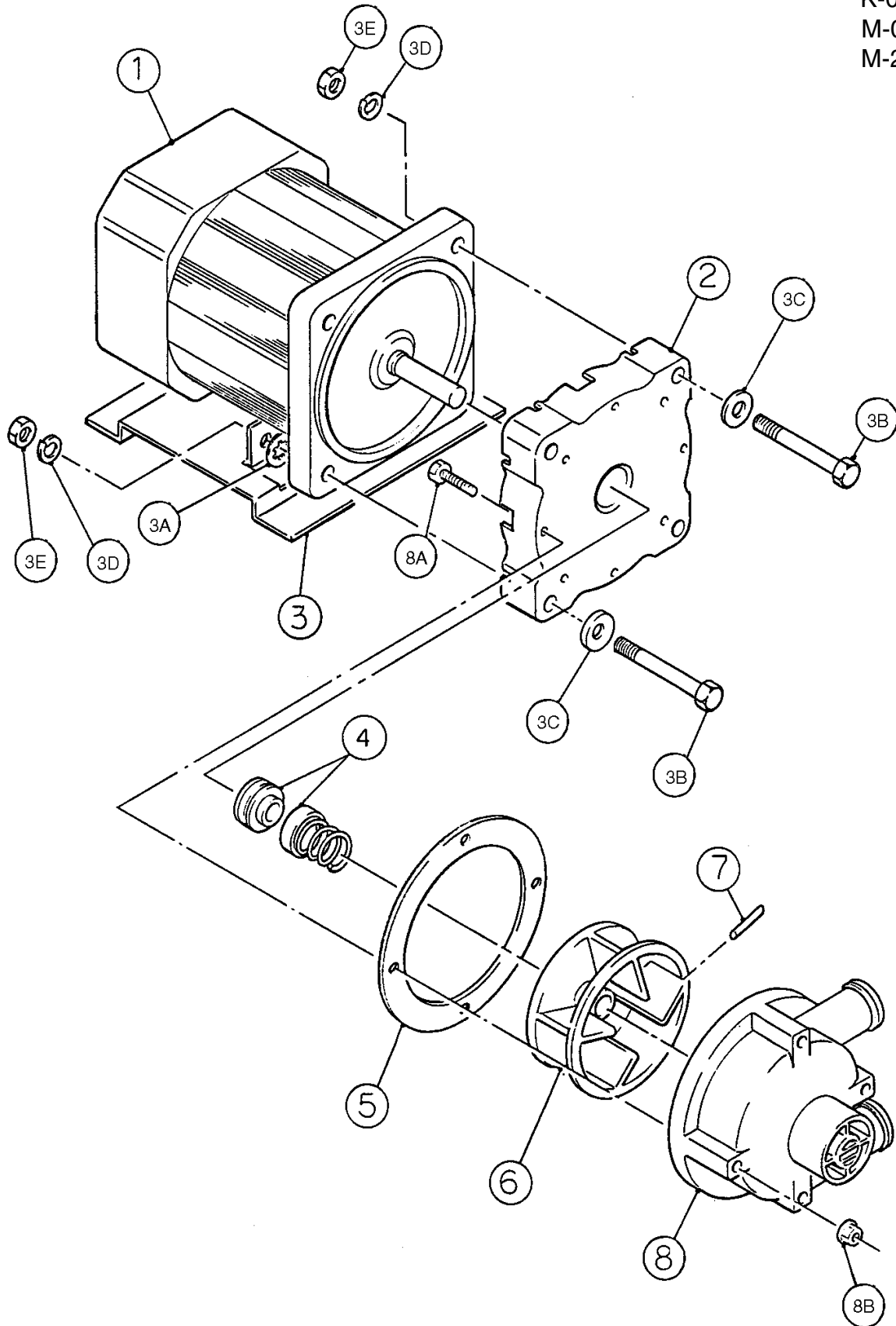
| MODEL: KM-2000SWF3, SRF3, SWH3, SRH3 TITLE: G. EVAPORATOR | | | | | | | | | | | |
|---|------------------------|--------------------------|-------------|-----------------|-----|---|---|-------------|---|--|--|
| INDEX NO. | DESCRIPTION | MATERIAL OR MODEL NUMBER | PART NUMBER | REQUIRED NUMBER | | | | | | | |
| | | | | KM-2000SWF3 | | | | KM-2000SWH3 | | | |
| | | | | KM-2000SRF3 | | | | KM-2000SRH3 | | | |
| H-0 | J-0 | K-0 | L-0 | M-0 | M-2 | | | | | | |
| H-1 | J-1 | | | M-1 | M-3 | | | | | | |
| 1 | EVAPORATOR | (S-0641) | 103317G02 | 6 | 6 | 6 | 6 | 6 | 6 | | |
| 2 | EVAP. BRACKET (A) | SS | 323690-01 | 2 | 2 | 2 | 2 | 2 | 2 | | |
| 3 | EVAP. BRACKET (B) | SS | 323691-01 | 2 | 2 | 2 | 2 | 2 | 2 | | |
| 4 | END PLATE (A) | ABS | 325859-01 | 2 | 2 | 2 | 2 | 2 | 2 | | |
| 5 | END PLATE (B) | ABS | 325860-01 | 2 | 2 | 2 | 2 | 2 | 2 | | |
| 6 | HOOK | PP | 324152-01 | 8 | 8 | 8 | 8 | 8 | 8 | | |
| 7 | EVAP. BRACKET | GS | 436582-01 | 2 | 2 | 2 | 2 | 2 | 2 | | |
| 8 | COPPER TUBE (A) - EVAP | COPPER | 439082-01 | 1 | 1 | 1 | 1 | 1 | 1 | | |
| 9 | COPPER TUBE (B) - EVAP | COPPER | 439082-02 | 1 | 1 | 1 | 1 | 1 | 1 | | |
| 10 | COPPER TUBE (C) - EVAP | COPPER | 439082-03 | 1 | 1 | 1 | 1 | 1 | 1 | | |
| 11 | EVAP. BRACKET (C) | SS | 325868-01 | 1 | 1 | 1 | 1 | 1 | 1 | | |
| | | | | | | | | | | | |
| | | | | | | | | | | | |
| | | | | | | | | | | | |
| | | | | | | | | | | | |
| | | | | | | | | | | | |
| | | | | | | | | | | | |
| | | | | | | | | | | | |
| | | | | | | | | | | | |
| | | | | | | | | | | | |
| | | | | | | | | | | | |
| | | | | | | | | | | | |
| | | | | | | | | | | | |
| | | | | | | | | | | | |
| | | | | | | | | | | | |
| | | | | | | | | | | | |
| | | | | | | | | | | | |

HA

KM-2000SWF3, SRF3, SWH3, SRH3

H. PUMP MOTOR ASSEMBLY

H-0, H-1,
J-0, J-1,
K-0, L-0,
M-0, M-1,
M-2, M-3



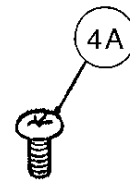
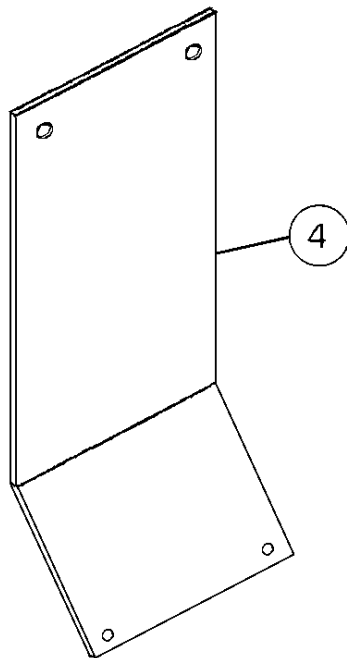
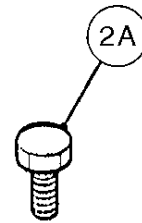
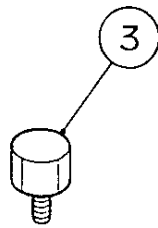
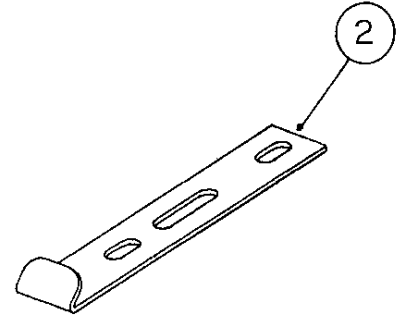
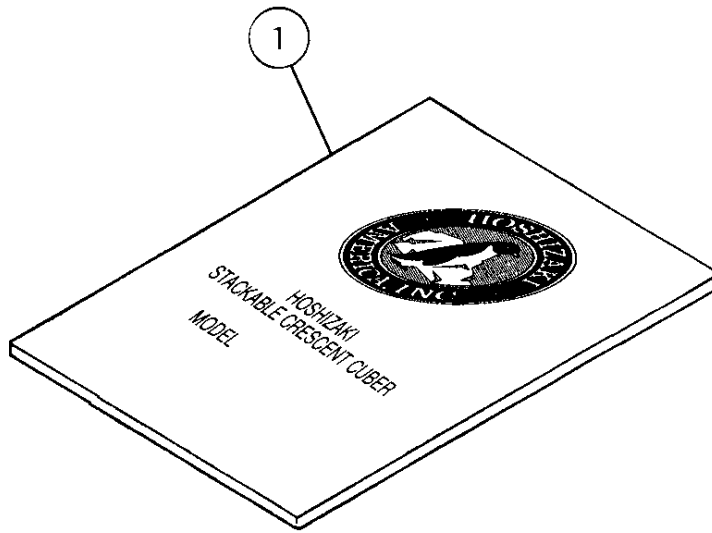
| MODEL: KM-2000SWF3, SRF3, SWH3, SRH3 TITLE: H. PUMP MOTOR ASSEMBLY | | | | | | | | | | | |
|--|--------------------|--------------------------|-------------|-----------------|-----|-----|-----|-------------|-----|--|--|
| INDEX NO. | DESCRIPTION | MATERIAL OR MODEL NUMBER | PART NUMBER | REQUIRED NUMBER | | | | | | | |
| | | | | KM-2000SWF3 | | | | KM-2000SWH3 | | | |
| | | | | KM-2000SRF3 | | | | KM-2000SRH3 | | | |
| | | | | H-0 | J-0 | K-0 | L-0 | M-1 | M-2 | | |
| H-1 | J-1 | | M-0 | | M-3 | | | | | | |
| 1 | PUMP MOTOR | M91A60SP201 | 2U0106-01 | 1 | 1 | 1 | 1 | 1 | 1 | | |
| 2 | PUMP FLANGE | PC | 215662-01 | 1 | 1 | 1 | 1 | 1 | 1 | | |
| 3 | PUMP MOTOR BRACKET | SS | 323904-01 | 1 | 1 | 1 | 1 | 1 | 1 | | |
| 3A | TOOTH WASHER | 6, SS | 7R22-0600 | 2 | 2 | 2 | 2 | 2 | 2 | | |
| 3B | HEXAGON BOLT | 6X40, SS | 7B02-0640 | 4 | 4 | 4 | 4 | 4 | 4 | | |
| 3C | FLAT WASHER | 6, SS | 7W22-0600 | 4 | 4 | 4 | 4 | 4 | 4 | | |
| 3D | SPLIT LOCK WASHER | 6, SS | 7L22-0600 | 4 | 4 | 4 | 4 | 4 | 4 | | |
| 3E | NUT | 6, SS | 7N12-0600 | 4 | 4 | 4 | 4 | 4 | 4 | | |
| 4 | MECHANICAL SEAL | H5-PN, 8MM | 428545-01 | 1 | 1 | 1 | 1 | 1 | 1 | | |
| 5 | PACKING | EPDM | 428547-01 | 1 | 1 | 1 | 1 | 1 | 1 | | |
| 6 | IMPELLER | ABS | 436584-01 | 1 | 1 | 1 | 1 | 1 | 1 | | |
| 7 | PIN | SS | 414102-01 | 1 | 1 | 1 | 1 | 1 | 1 | | |
| 8 | PUMP HOUSING | ABS | 213687-01 | 1 | 1 | 1 | 1 | 1 | 1 | | |
| 8A | HEXAGON BOLT | 4X55, SS | 7B02-0455 | 4 | 4 | 4 | 4 | 4 | 4 | | |
| 8B | FLANGE NUT | 4, SS | 7J02-0400 | 4 | 4 | 4 | 4 | 4 | 4 | | |
| | | | | | | | | | | | |
| | | | | | | | | | | | |
| | | | | | | | | | | | |
| | | | | | | | | | | | |
| | | | | | | | | | | | |
| | | | | | | | | | | | |
| | | | | | | | | | | | |
| | | | | | | | | | | | |
| | | | | | | | | | | | |
| | | | | | | | | | | | |
| | | | | | | | | | | | |
| | | | | | | | | | | | |
| | | | | | | | | | | | |
| | | | | | | | | | | | |

HA

KM-2000SWF3, SRF3, SWH3, SRH3

J. ACCESSORIES

H-0, H-1, J-0,
J-1, K-0, L-0,
M-0, M-1, M-2
M-3



| MODEL: KM-2000SWF3, SRF3, SWH3, SRH3 TITLE: J. ACCESSORIES | | | | | | | | | | | |
|--|------------------------------|--------------------------|-------------|-----------------|-----|-----|-----|-------------|-----|--|--|
| INDEX NO. | DESCRIPTION | MATERIAL OR MODEL NUMBER | PART NUMBER | REQUIRED NUMBER | | | | | | | |
| | | | | KM-2000SWF3 | | | | KM-2000SWH3 | | | |
| | | | | KM-2000SRF3 | | | | KM-2000SRH3 | | | |
| | | | | H-0 | J-0 | K-0 | L-0 | M-1 | M-2 | | |
| H-1 | J-1 | | M-0 | | M-3 | | | | | | |
| 1 | INSTRUCTION MANUAL | PAPER | 91A1EA10A | 1 | 1 | 1 | | | | | |
| | | PAPER | 91A1ED10A | | | | 1 | 1 | 1 | | |
| 2 | UNIVERSAL BRACE | GS | 4A0363-01 | 2 | 2 | 2 | 2 | 2 | 2 | | |
| 2A | HEX HEAD BOLT | 5X12, SS | 7B02-0512 | 4 | 4 | 4 | 4 | 4 | 4 | | |
| 3 | THUMBSCREW | ABS, SS | 415949G01 | 1 | 1 | 1 | 1 | 1 | 1 | | |
| 4 | THERMOSTAT EXTENSION BRACKET | SS | 3A0408-01 | 1 | 1 | 1 | 1 | 1 | 1 | | |
| 4A | TRUSS HEAD SCREW | 4X10, SS | 7C32-0410 | 2 | 2 | 2 | 2 | 2 | 2 | | |
| | | | | | | | | | | | |
| | | | | | | | | | | | |
| | | | | | | | | | | | |
| | | | | | | | | | | | |
| | | | | | | | | | | | |
| | | | | | | | | | | | |
| | | | | | | | | | | | |
| | | | | | | | | | | | |
| | | | | | | | | | | | |
| | | | | | | | | | | | |
| | | | | | | | | | | | |
| | | | | | | | | | | | |
| | | | | | | | | | | | |
| | | | | | | | | | | | |
| | | | | | | | | | | | |
| | | | | | | | | | | | |
| | | | | | | | | | | | |
| | | | | | | | | | | | |