
NO. 71088

ISSUED: AUGUST 3, 1994

REVISED: JUNE 12, 2000



**HOSHIZAKI
MODULAR CRESCENT CUBER**

MODEL

KM-1600MRE

KM-1600MRE3

(FINAL) PARTS LIST

HA

KM-1600MRE

D-1 June, 1994
E-0 Jan., 1995
E-1 June, 1995
E-2 Oct., 1995
F-0 May, 1996
F-1 July, 1996
G-0 Dec., 1996
G-1 Aug., 1997
H-0 Jan., 1998
H-1 May, 1998

KM-1600MRE3

D-1 June, 1994
E-0 Dec., 1994
E-1 April, 1995
E-2 Oct., 1995
F-1 Dec., 1995
F-2 July, 1996
G-0 Jan., 1997
G-1 Sept., 1997
H-0 March, 1998
H-1 May, 1998
H-2 June, 1998

HA

MATERIAL ABBREVIATIONS

ALUMINUM

AL = Aluminum

COPPER

CU = Copper

PLASTIC

ABS = Acrylonitrile -butadiene - styrene
AC = Polyacetal
EVA = Ethylene vinyl acetate
PA = Polyamide = Nylon
PC = Polycarbonate
PE = Polyethylene
PES = Polyester
PETP = Polyethylene terephthalate = Tetlon
PP = Polypropylene
PS = Polystyrene
PTFE = Polytetrafluoroethylene = Teflon
PUR = Polyurethane
PVC = Polyvinyl chloride

RUBBER

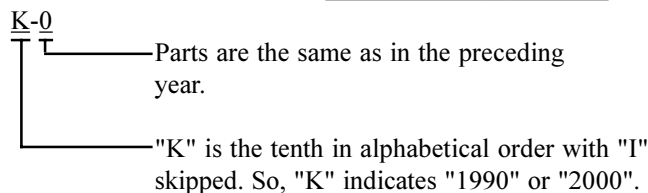
VN = Vinyl Nitrile
EPDM = EP rubber
NBR = Nitrile butadiene rubber
NR = Natural rubber
NP = Neoprene
SI.R = Silicone rubber
SY.R = Synthetic rubber
EPH = Epichlorohydrin

STEEL

GS = Galvanized steel
SS = Stainless steel
PS = Plated steel
PAS = Primed steel

AUXILIARY CODE

Ex.1

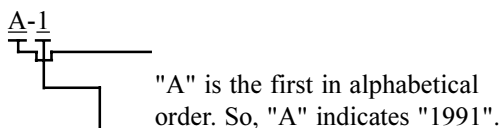


(Note) - = Part deleted.

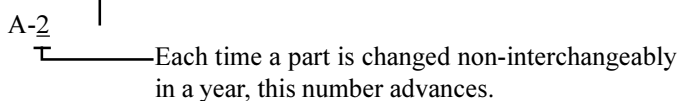
x = Part deleted and replaced by "o" part.

o = New part for "x" in the same auxiliary

Ex.2
code.



Ex.3



FASTENER ABBREVIATION LIST

ST	Phillips Truss Machine Screw
SP	Phillips Pan Head Machine Screw
SF	Phillips Flat Head Machine Screw
SS	Phillips Pan Head Machine Screw with Split Lock Washer
SW	Phillips Pan Head Machine Screw with Split Lock Washer and Flat Washer
T1	Phillips Truss Head Tapping Screw (Correspond to Type A)
T2	Phillips Truss Head Tapping Screw (Correspond to Type B)
T3	Phillips Truss Head Tapping Screw (Correspond to Type C)
FT	Phillips Truss Head Tapping Screw (Special)
BH	Hexagon Head Bolt
BC	Socket Head Cap Screw
BS	Hexagon Bolt with Split Washer
BW	Hexagon Bolt with Split Washer and Flat Washer
BF	Hexagon Flange Bolt
BR	Cross-Recessed Hexagon Head Bolt
BRW	Cross-Recessed Hexagon Head Bolt with Split Lock Washer and Flat Washer
WL	Split Lock Washer
WT	External Tooth Washer
WF	Flat Washer
WS	Spring Washer
NH	Hexagon Nut
NF	Hexagon Flange Nut
NC	Hexagon Cap Nut
NS	Square Nut
NW	Wing Nut

Ex. ST0308S (Phillips Truss Head Machine Screw
3x8, made of stainless steel)

Material	None:	Plated Steel
Length (mm)	S:	Stainless Steel
Nominal Diameter (mm)	B:	Brass
Form of Head	P:	Plastic
Description		

(Note) Second character is numerical except toe list.

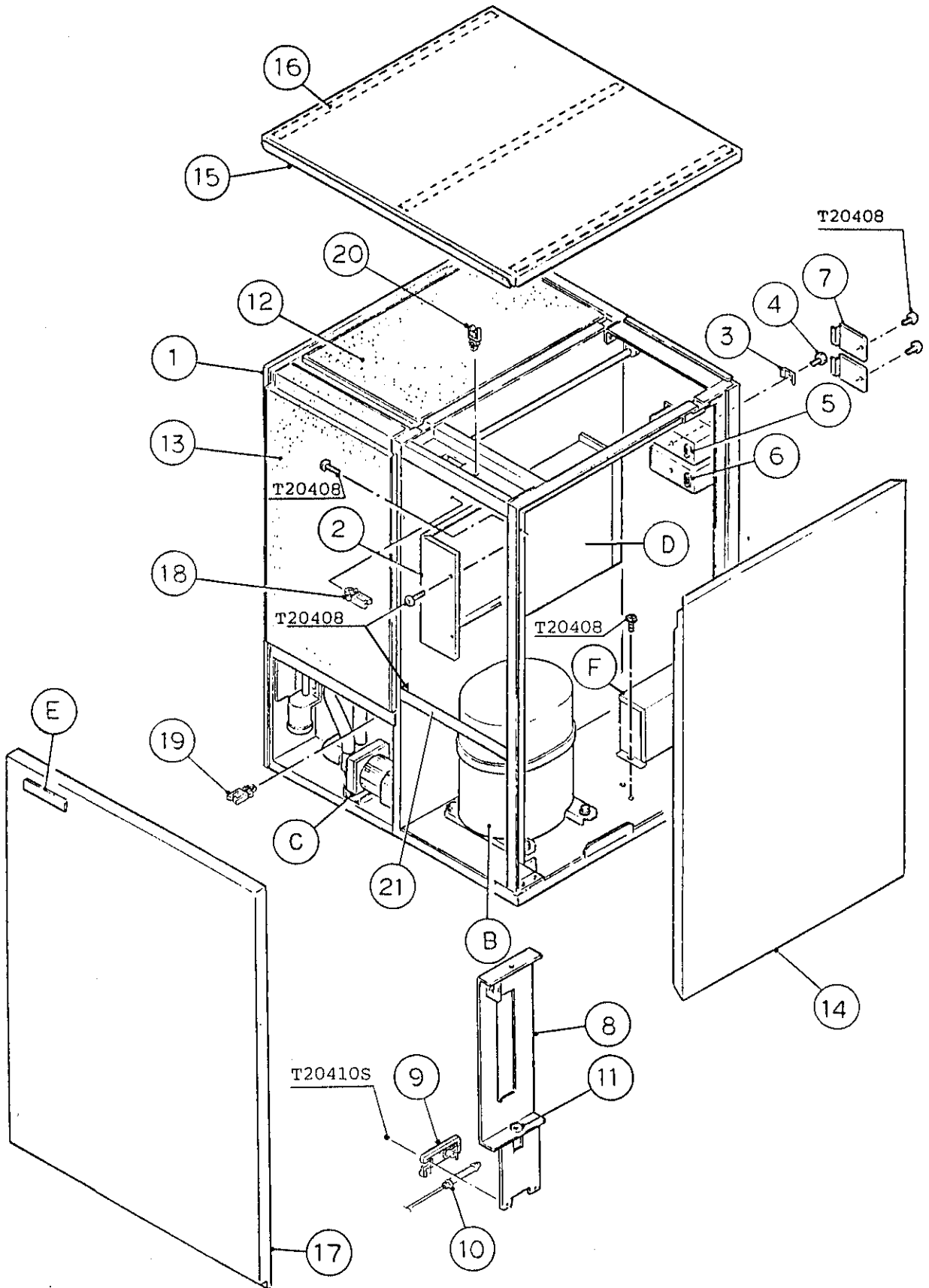
Ex. S1, S2, B3 etc.

And abbreviations and names are shown under the illustration.

HA
KM-1600MRE

A. ICE CUBER ASSEMBLY

D-1, E-0, E-1, E-2, F-0,
F-1, G-0, G-1, H-0, H-1



HA

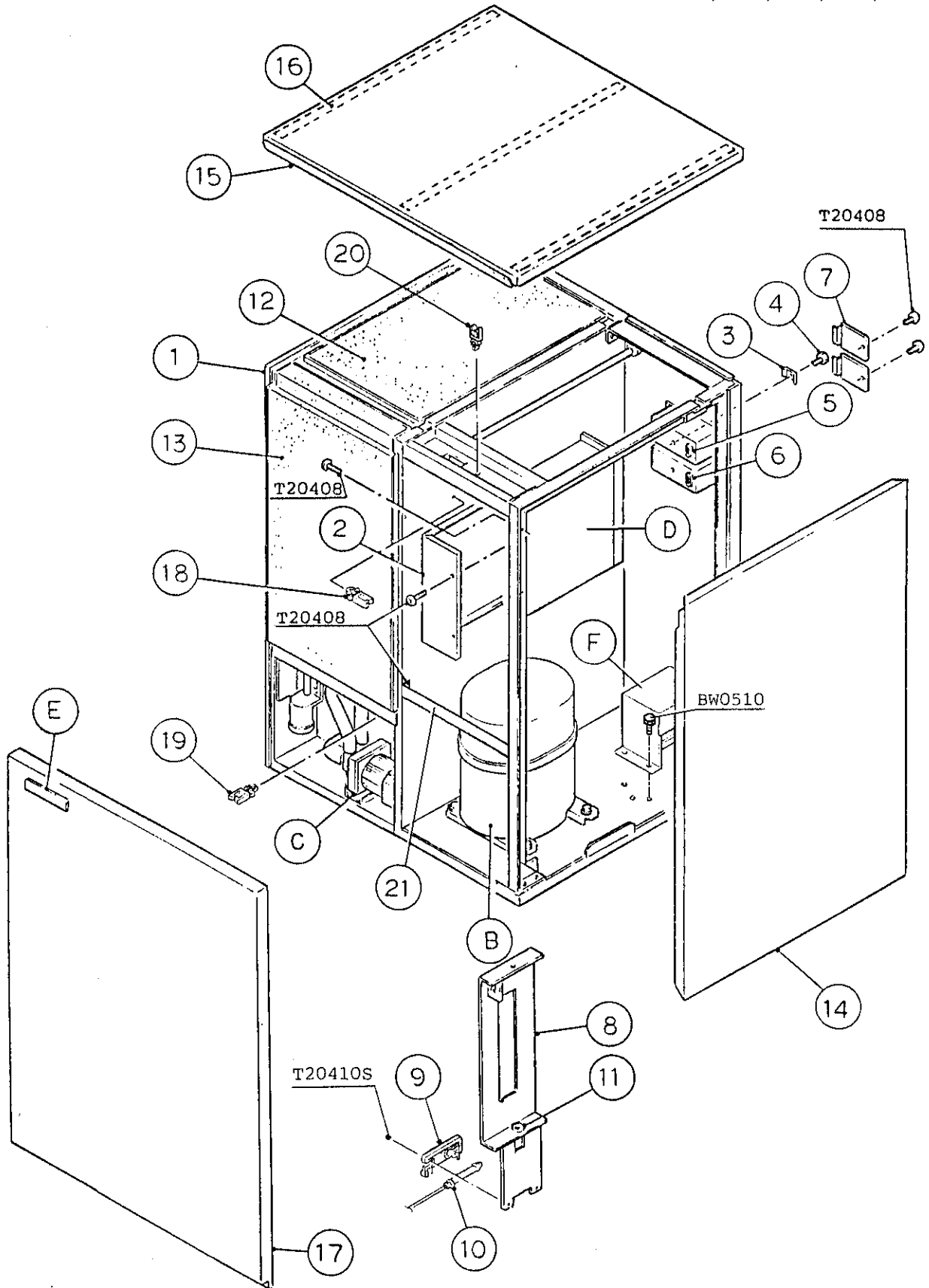
MODEL: KM-1600MRE TITLE: A. ICE CUBER ASSEMBLY													
INDEX NO.	DESCRIPTION	MATERIAL OR MODEL NUMBER	PART NUMBER	REQUIRED NUMBER									
				D-1	E-0	E-1	E-2	F-0	F-1	G-0	G-1	H-0	H-1
B	REFRIGERATION CIRCUIT	-	107213A01	1	1	-							
		-	107213A03			1	1	1	1	1	1	1	1
C	WATER CIRCUIT	-	1A0094A01	1	1	x1							
		-	1A0094A02			o1	1	1	1	1	1	1	-
		-	1A0094A04										1
D	CONT. BOX ASSEMBLY	-	219335A05	1	1	1	1	1	1	1	1	1	1
E	LABEL LOCATION	-	222014A01	1	1	1	1	1	1	1	1	1	1
F	CAPACITOR BOX ASSEMBLY	-	326126A02	1	1	1	1	1	1	1	1	1	1
1	EVAPORATOR CASE	-	105061G03	1	1	1	x1						
		-	105061G04				o1	1	1	1	1	1	x1
		-	105061G06										o1
2	CONT. BOX COVER	GS	3A0174-01	1	1	1	1	1	1	1	1	1	1
3	SQUARE WASHER	COPPER	433537-02	2	2	2	2	2	2	2	2	2	2
4	SCREW - GROUNDING	BRASS	433304-02	2	2	2	2	2	2	2	2	2	2
5	BUSHING	SR-30-1	420472-03	1	1	1	1	1	1	1	1	1	1
6	BUSHING	SR-34-2	420472-05	1	1	1	1	1	1	1	1	1	1
7	JUNCTION BOX COVER	GS	433410-01	2	2	2	2	2	2	2	2	2	2
8	BULB HOLDER	-	322815G02	1	1	1	1	1	1	1	1	1	1
9	BULB HOLDER	ABS	328919-01	1	1	1	1	1	1	1	1	1	1
10	SPACER	PE	443545-01	2	2	2	2	2	2	2	2	2	2
11	BUSHING	EPDM	425307-01	1	1	1	1	1	1	1	1	1	1
12	TOP INSULATION	ABS, PE	322714G01	1	1	1	1	1	1	1	1	1	1
13	FRONT INSULATION	ABS, PE	322711G01	1	1	1	1	1	1	1	1	1	1
14	SIDE PANEL (R)	SS	212688G01	1	1	1	1	1	1	1	1	1	1
15	TOP PANEL	(323836A01)	212687-01	1	1	1	1	1	1	1	1	1	1
16	GASKET	(323836A01)	427014-04	3	3	3	3	3	3	3	3	3	3
17	FRONT PANEL	SS	212686-01	1	1	1	1	1	1	1	1	1	1
18	WIRE SADDLE	-	4A0338-03	5	5	5	5	5	5	5	5	5	5
19	WIRE SADDLE	-	4A0338-02	2	2	2	2	2	2	2	2	2	2

HA

KM-1600MRE3

A. ICE CUBER ASSEMBLY

D-1, E-0, E-1, E-2, F-1, F-2,
G-0, G-1, H-0, H-1, H-2



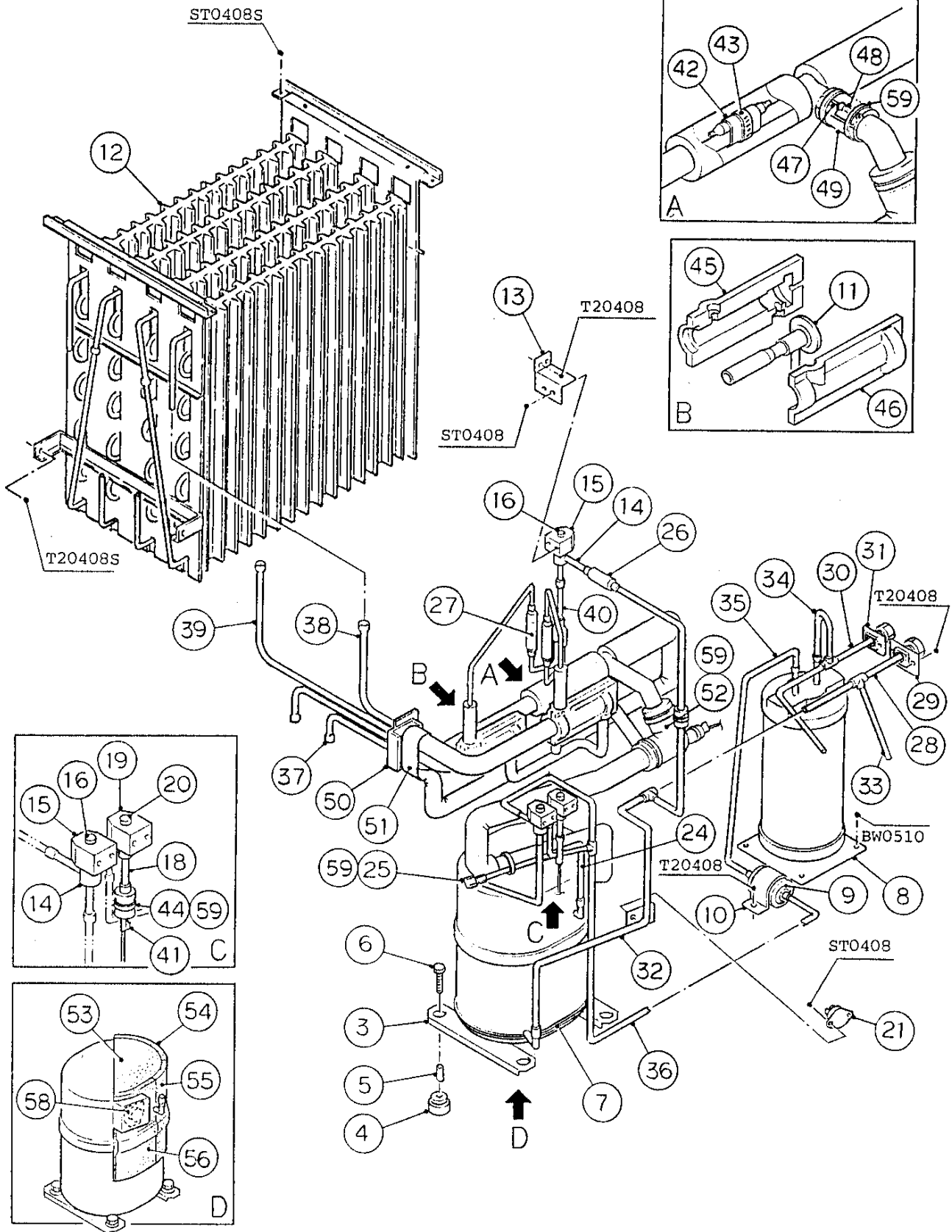
MODEL: KM-1600MRE3 TITLE: A. ICE CUBER ASSEMBLY													
INDEX NO.	DESCRIPTION	MATERIAL OR MODEL NUMBER	PART NUMBER	REQUIRED NUMBER									
				D-1	E-0	E-1	E-2	F-1	F-2	G-0 G-1	H-0	H-1	H-2
B	REFRIGERATION CIRCUIT	-	107213A02	1	1	-							
		-	107213A04			1	1	1	1	1	1	1	11
C	WATER CIRCUIT	-	1A0094A01	1	1	x1							
		-	1A0094A02			o1	1	1	1	1	1	1	-
		-	1A0094A04										1
D	CONTROL BOX ASSEMBLY	-	219335A05	1	1	1	1	1	1	1	1	1	1
E	LABEL LOCATION	-	222014A02	1	1	1	1	1	1	1	1	1	1
F	TRANSFORMER BOX ASSEMBLY	-	333073A01	1	1	1	1	1	1	1	1	1	1
1	EVAPORATOR CASE	-	105061G03	1	1	1	x1						
		-	105061G04				o1	1	1	1	1	1	x1
		-	105061G06										o1
2	CONT. BOX COVER	GS	3A0174-01	1	1	1	1	1	1	1	1	1	1
3	SQUARE WASHER	COPPER	433537-02	2	2	2	2	2	2	2	2	2	2
4	SCREW - GROUNDING	BRASS	433304-02	2	2	2	2	2	2	2	2	2	2
5	BUSHING	SR-30-1	420472-03	1	1	1	1	1	1	1	1	1	1
6	BUSHING	SR-34-2	420472-05	1	1	1	1	1	1	1	1	1	1
7	JUNCTION BOX COVER	GS	433410-01	2	2	2	2	2	2	2	2	2	2
8	BULB HOLDER	-	322815G02	1	1	1	1	1	1	1	1	1	1
9	BULB HOLDER	ABS	328919-01	1	1	1	1	1	1	1	1	1	1
10	SPACER	PE	443545-01	2	2	2	2	2	2	2	2	2	2
11	BUSHING	EPDM	425307-01	1	1	1	1	1	1	1	1	1	1
12	TOP INSULATION	ABS, PE	322714G01	1	1	1	1	1	1	1	1	1	1
13	FRONT INSULATION	ABS, PE	322711G01	1	1	1	1	1	1	1	1	1	1
14	SIDE PANEL (R)	SS	212688G01	1	1	1	1	1	1	1	1	1	1
15	TOP PANEL	(323836A01)	212687-01	1	1	1	1	1	1	1	1	1	1
16	GASKET	(323836A01)	427014-04	3	3	3	3	3	3	3	3	3	3
17	FRONT PANEL	SS	212686-01	1	1	1	1	1	1	1	1	1	1
18	WIRE SADDLE	-	4A0338-03	5	5	5	5	5	5	5	5	5	5

HA

KM-1600MRE

B. REFRIGERATION CIRCUIT (1/2)

D-1, E-0, E-1, E-2, F-0,
F-1, G-0, G-1, H-0, H-1

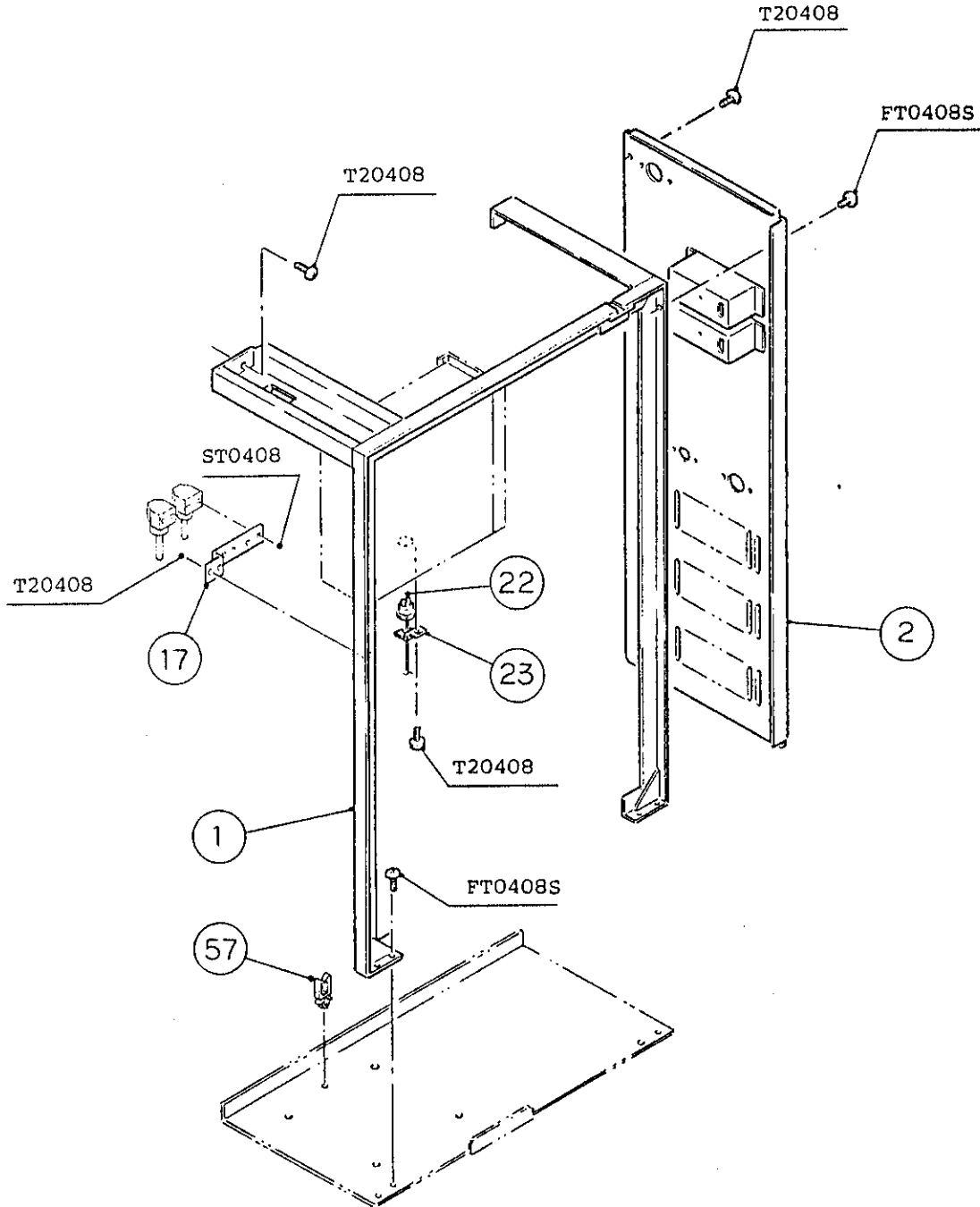


HA

KM-1600MRE

B. REFRIGERATION CIRCUIT (2/2)

D-1, E-0, E-1, E-2, F-0,
F-1, G-0, G-1, H-0, H-1



MODEL: KM-1600MRE TITLE: B. REFRIGERATION CIRCUIT													
INDEX NO.	DESCRIPTION	MATERIAL OR MODEL	PART NUMBER	REQUIRED NUMBER									
				D-1	E-0	E-1	E-2	F-0	F-1	G-0	G-1	H-0	H-1
1	FRAME	GS	222024G01	1	1	1	1	1	1	1	1	1	1
2	REAR PANEL	GS	222025G01	1	1	-							
		GS	222025G02			1	1	1	1	1	1	1	1
3	COMPRESSOR	H23A463ABCA	438202-01	1	1	1	1	1	1	1	1	1	1
4	GROMMET	-	434922-01	4	4	4	4	4	4	4	4	4	4
5	SPACER	-	434921-01	4	4	4	4	4	4	4	4	4	4
6	BOLT	8x45	437889-01	4	4	4	4	4	4	4	4	4	4
7	CRANKCASE HEATER	T.I. 8HT5-505	438208-01	1	1	1	1	1	1	1	1	1	1
8	RECEIVER	RR MN WP450	438209-01	1	1	1	1	1	1	1	1	1	1
9	DRIER	C-053-S	445011-01	1	1	1	1	1	1	1	1	1	1
10	DRIER BRACKET	GS	445251-01	1	1	1	1	1	1	1	1	1	1
11	EXPANSION VALVE	HFE-15HHD-2	445542-01	2	2	2	2	2	2	2	2	2	2
12	EVAPORATOR	-	104442G01	1	1	1	1	1	1	1	1	1	1
13	HOT GAS VALVE BRACKET	GS	444816-01	1	1	1	1	1	1	1	1	1	1
14	VALVE BODY	70	440352-01	2	2	2	2	2	2	2	2	2	2
15	COIL - VALVE	ABS-25-1-HD-2	440353-01	2	2	2	2	2	2	2	2	2	2
16	BOLT	4x6	440353F01	2	2	2	2	2	2	2	2	2	2
17	LINE VALVE BRACKET	GS	438213-01	1	1	1	1	1	1	1	1	1	1
18	VALVE BODY	24	440351-01	1	1	1	1	1	1	1	1	1	1
19	COIL - VALVE	ADS-24HD-3	440354-01	1	1	1	1	1	1	1	1	1	1
20	BOLT	4x6	440354F01	1	1	1	1	1	1	1	1	1	1
21	THERMOSTAT	US-602SXTTBL	445595-01	1	1	1	1	1	1	1	1	1	1
22	PRESSURE SWITCH	ACB-2UB04	433441-05	1	1	1	1	1	1	1	1	1	1
23	PRESS. SWITCH BRACKET	GS	434938-01	1	1	1	1	1	1	1	1	1	1
24	COPPER TUBE - ACCESS VALVE	COPPER	439761-02	1	1	1	1	1	1	1	1	1	1
25	ACCESS VALVE	TCJ-2F15-HD	417366-01	1	1	1	1	1	1	1	1	1	1
26	STRAINER	-	441569-02	1	1	1	1	1	1	1	1	1	1
27	CHECK VALVE	YCV5-2	425342-01	2	2	2	2	2	2	2	2	2	2
28	COUPLING	-	434136G01	1	1	1	1	1	1	1	1	1	1

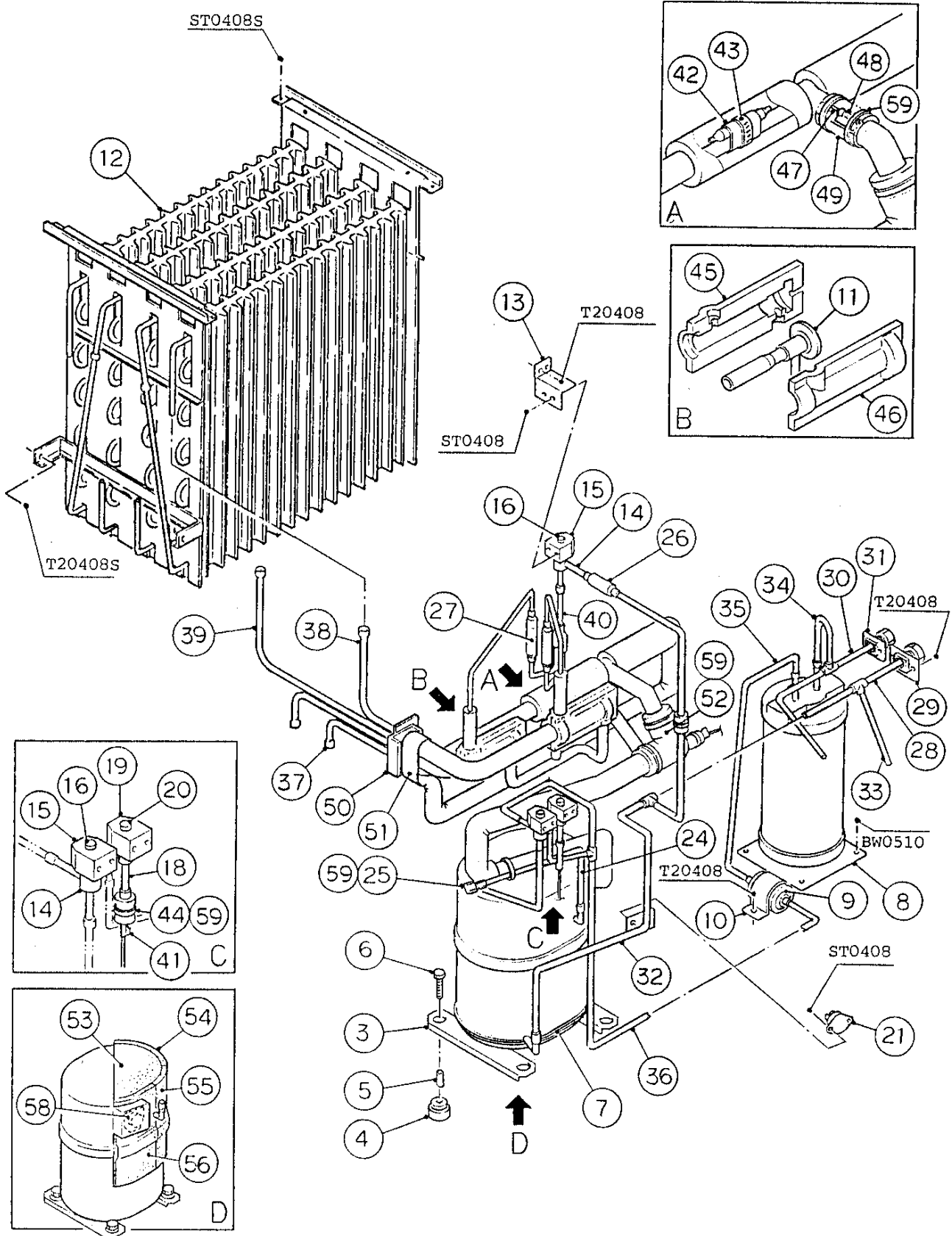
MODEL: KM-1600MRE TITLE: B. REFRIGERATION CIRCUIT													
INDEX NO.	DESCRIPTION	MATERIAL OR MODEL	PART NUMBER	REQUIRED NUMBER									
				D-1	E-0	E-1	E-2	F-0	F-1	G-0	G-1	H-0	H-1
29	TUBE HOLDER - L	GS	438245-01	1	1	1	1	1	1	1	1	1	1
30	COUPLING	-	433751G01	1	1	1	1	1	1	1	1	1	1
31	TUBE HOLDER - S	GS	438246-01	1	1	1	1	1	1	1	1	1	1
32	COPPER TUBE (A) - HIGH SIDE	COPPER	222027G01	1	1	1	1	1	1	1	1	1	1
33	COPPER TUBE (B) - HIGH SIDE	COPPER	447737G01	1	1	1	1	1	1	1	1	1	1
34	COPPER TUBE (D) - HIGH SIDE	COPPER	334095G01	1	1	1	1	1	1	1	1	1	1
35	COPPER TUBE (E) - HIGH SIDE	COPPER	334096-01	1	1	1	1	1	1	1	1	1	1
36	COPPER TUBE (F) - HIGH SIDE	COPPER	222028G01	1	1	1	1	1	1	1	1	1	1
37	HEAT EXCHANGER	COPPER	107214G01	1	1	1	1	1	1	1	1	1	1
38	COPPER TUBE (R) - LOW SIDE	COPPER	222029G01	1	1	1	1	1	1	1	1	1	1
39	COPPER TUBE (L) - LOW SIDE	COPPER	222030G01	1	1	1	1	1	1	1	1	1	1
40	COPPER TUBE - HOT GAS	COPPER	3A0213G01	1	1	1	1	1	1	1	1	1	1
41	COPPER TUBE - CAPILLARY	COPPER	445174G03	1	1	1	1	1	1	1	1	1	1
42	HOLDER / EXPANSION VALVE - 3/8	SS	3A0107-01	2	2	2	2	2	2	2	2	2	2
43	CLAMP	SS	443461-01	2	2	2	2	2	2	2	2	2	2
44	INSULATION TUBE	L=40	7762-1020	3	3	3	3	3	3	3	3	3	3
45	EXPANSION VALVE COVER (A)	PE FOAM	324214-01	2	2	2	2	2	2	2	2	2	2
46	EXPANSION VALVE COVER (B)	PE FOAM	324214-02	2	2	2	2	2	2	2	2	2	2
47	THERMISTOR	-	429006-03	1	1	1	1	1	1	1	1	1	1
48	HOLDER - THERMISTOR	COPPER	438247-01	1	1	1	1	1	1	1	1	1	1
49	INSULATION - THERMISTOR	PE FOAM	427441-01	1	1	1	1	1	1	1	1	1	1
50	INSULATED RUBBER TUBE	EPDM	323975G01	1	1	1	1	1	1	1	1	1	1
51	INSULATION	PE FOAM	436671-01	1	1	1	1	1	1	1	1	1	1
52	INSULATION TUBE	L=150	7762-3555	1	1	1	1	1	1	1	1	1	1
53	INSULATION - COMPRESSOR TOP	VNN2C1(SOFT)	447118-01	1	1	1	1	1	1	1	1	1	1
54	INSULATION - COMPRESSOR RIGHT	VNN2C1(SOFT)	447119-01	1	1	1	1	1	1	1	1	1	1

HA

KM-1600MRE3

B. REFRIGERATION CIRCUIT (1/2)

D-1, E-0, E-1, E-2, F-1, F-2
G-0, G-1, H-0, H-1, H-2

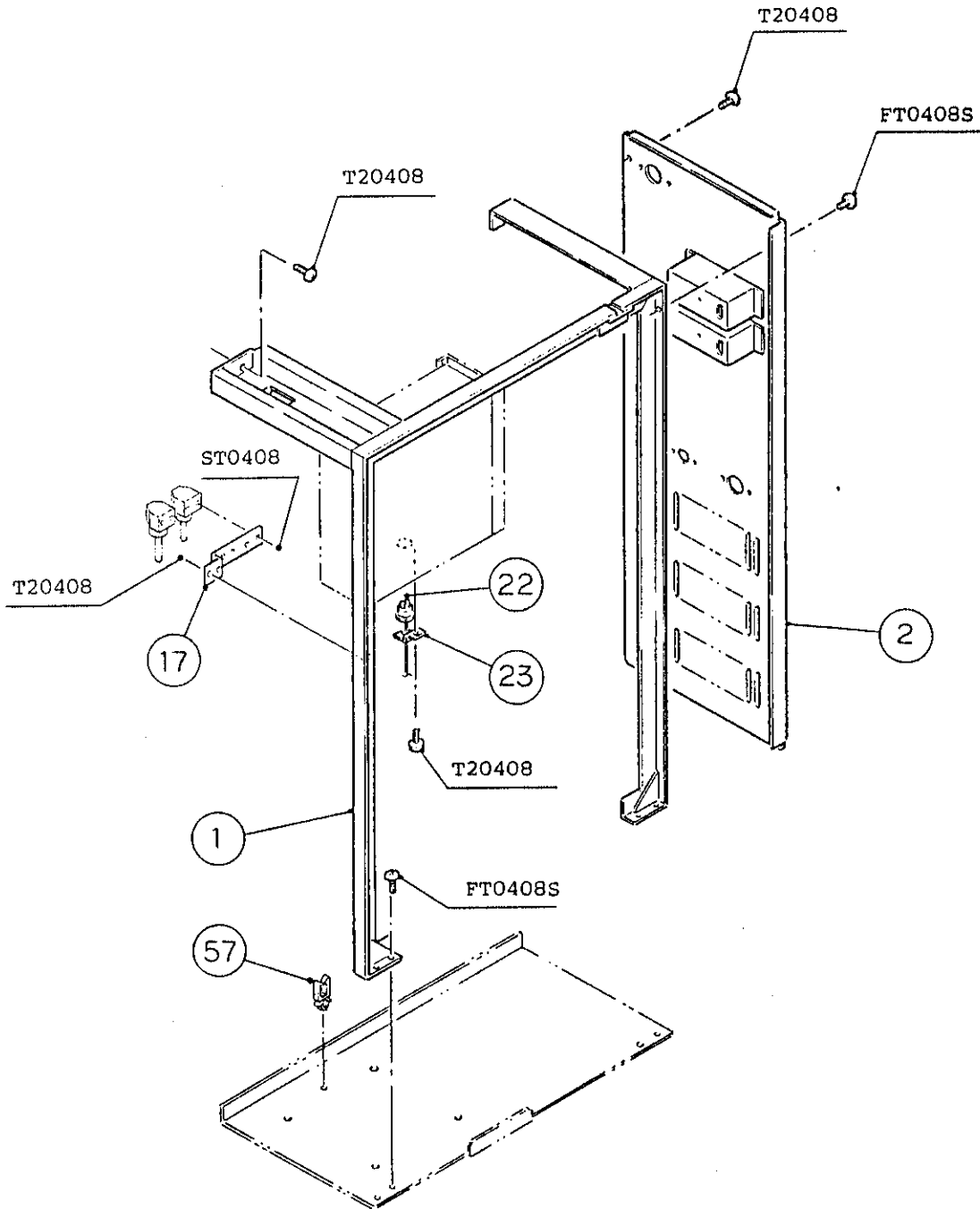


HA

KM-1600MRE3

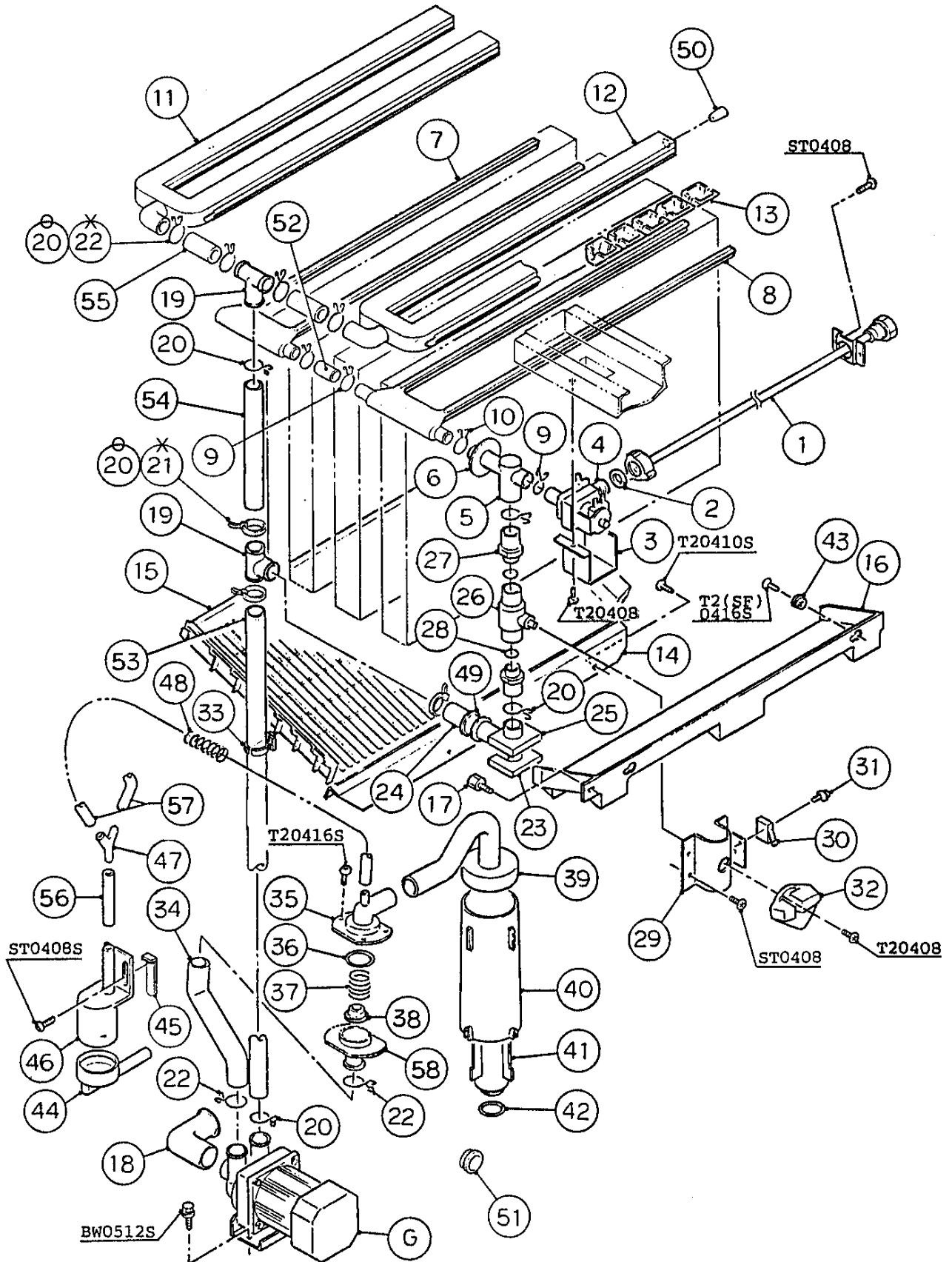
B. REFRIGERATION CIRCUIT (2/2)

D-1, E-0, E-1, E-2, F-1, F-2
G-0, G-1, H-0, H-1, H-2



MODEL: KM-1600MRE3 TITLE: B. REFRIGERATION CIRCUIT													
INDEX NO.	DESCRIPTION	MATERIAL OR MODEL	PART NUMBER	REQUIRED NUMBER									
				D-1	E-0	E-1	E-2	F-1	F-2	G-0 G-1	H-0	H-1	H-2
1	FRAME	GS	222024G01	1	1	1	1	1	1	1	1	1	1
2	REAR PANEL	GS	222025G01	1	1	-							
		GS	222025G02			1	1	1	1	1	1	1	1
3	COMPRESSOR	M53A273DBDA	4A0333-01	1	1	1	1	1	1	1	1	1	1
4	GROMMET	-	434922-01	4	4	4	4	4	4	4	4	4	4
5	SPACER	-	434921-01	4	4	4	4	4	4	4	4	4	4
6	BOLT	8x45	437889-01	4	4	4	4	4	4	4	4	4	4
7	CRANKCASE HEATER	T.I. 8HT5-505	438208-01	1	1	1	1	1	1	1	1	1	1
8	RECEIVER	RR MN WP450	438209-01	1	1	1	1	1	1	1	1	1	1
9	DRIER	C-053-S	445011-01	1	1	1	1	1	1	1	1	1	1
10	DRIER BRACKET	GS	445251-01	1	1	1	1	1	1	1	1	1	1
11	EXPANSION VALVE	HFE-15HHD-2	445542-01	2	2	2	2	2	2	2	2	2	2
12	EVAPORATOR	-	104442G01	1	1	1	1	1	1	1	1	1	1
13	HOT GAS VALVE BRACKET	GS	444816-01	1	1	1	1	1	1	1	1	1	1
14	VALVE BODY	70	440352-01	2	2	2	2	2	2	2	2	2	2
15	COIL - VALVE	ABS-25-1-HD-2	440353-01	2	2	2	2	2	2	2	2	2	2
16	BOLT	4x6	440353F01	2	2	2	2	2	2	2	2	2	2
17	LINE VALVE BRACKET	GS	438213-01	1	1	1	1	1	1	1	1	1	1
18	VALVE BODY	24	440351-01	1	1	1	1	1	1	1	1	1	1
19	COIL - VALVE	ADS-24HD-3	440354-01	1	1	1	1	1	1	1	1	1	1
20	BOLT	4x6	440354F01	1	1	1	1	1	1	1	1	1	1
21	THERMOSTAT	US-602SXTTBL	445595-01	1	1	1	1	1	1	1	1	1	1
22	PRESSURE SWITCH	ACB-2UB04	433441-05	1	1	1	1	1	1	1	1	1	1
23	PRESS. SWITCH BRACKET	GS	434938-01	1	1	1	1	1	1	1	1	1	1
24	COPPER TUBE - ACCESS VALVE	COPPER	439761-02	1	1	1	1	1	1	1	1	1	1
25	ACCESS VALVE	TCJ-2F15-HD	417366-01	1	1	1	1	1	1	1	1	1	1
26	STRAINER	-	441569-02	1	1	1	1	1	1	1	1	1	1
27	CHECK VALVE	YCV5-2	425342-01	2	2	2	2	2	2	2	2	2	2
28	COUPLING	-	434136G01	1	1	1	1	1	1	1	1	1	1

MODEL: KM-1600MRE3 TITLE: B. REFRIGERATION CIRCUIT													
INDEX NO.	DESCRIPTION	MATERIAL OR MODEL	PART NUMBER	REQUIRED NUMBER									
				D-1	E-0	E-1	E-2	F-1	F-2	G-0 G-1	H-0	H-1	H-2
29	TUBE HOLDER - L	GS	438245-01	1	1	1	1	1	1	1	1	1	1
30	COUPLING	-	433751G01	1	1	1	1	1	1	1	1	1	1
31	TUBE HOLDER - S	GS	438246-01	1	1	1	1	1	1	1	1	1	1
32	COPPER TUBE (A) - HIGH SIDE	COPPER	222027G01	1	1	1	1	1	1	1	1	1	1
33	COPPER TUBE (B) - HIGH SIDE	COPPER	447737G01	1	1	1	1	1	1	1	1	1	1
34	COPPER TUBE (D) - HIGH SIDE	COPPER	334095G01	1	1	1	1	1	1	1	1	1	1
35	COPPER TUBE (E) - HIGH SIDE	COPPER	334096-01	1	1	1	1	1	1	1	1	1	1
36	COPPER TUBE (F) - HIGH SIDE	COPPER	222028G01	1	1	1	1	1	1	1	1	1	1
37	HEAT EXCHANGER	COPPER	107214G01	1	1	1	1	1	1	1	1	1	1
38	COPPER TUBE (R) - LOW SIDE	COPPER	222029G01	1	1	1	1	1	1	1	1	1	1
39	COPPER TUBE (L) - LOW SIDE	COPPER	222030G01	1	1	1	1	1	1	1	1	1	1
40	COPPER TUBE - HOT GAS	COPPER	3A0213G01	1	1	1	1	1	1	1	1	1	1
41	COPPER TUBE - CAPILLARY	COPPER	445174G02	1	1	1	1	1	1	1	1	1	1
42	HOLDER / EXPANSION VALVE - 3/8	SS	3A0107-01	2	2	2	2	2	2	2	2	2	2
43	CLAMP	SS	443461-01	2	2	2	2	2	2	2	2	2	2
44	INSULATION TUBE	L=40	7762-1020	3	3	3	3	3	3	3	3	3	3
45	EXPANSION VALVE COVER (A)	PE FOAM	324214-01	2	2	2	2	2	2	2	2	2	2
46	EXPANSION VALVE COVER (B)	PE FOAM	324214-02	2	2	2	2	2	2	2	2	2	2
47	THERMISTOR	-	429006-03	1	1	1	1	1	1	1	1	1	1
48	HOLDER - THERMISTOR	COPPER	438247-01	1	1	1	1	1	1	1	1	1	1
49	INSULATION - THERMISTOR	PE FOAM	427441-01	1	1	1	1	1	1	1	1	1	1
50	INSULATED RUBBER TUBE	EPDM	323975G01	1	1	1	1	1	1	1	1	1	1
51	INSULATION	PE FOAM	436671-01	1	1	1	1	1	1	1	1	1	1
52	INSULATION TUBE	L=150	7762-3555	1	1	1	1	1	1	1	1	1	1
53	INSULATION - COMPRESSOR TOP	VNN2C1(SOFT)	447118-01	1	1	1	1	1	1	1	1	1	1
54	INSULATION - COMPRESSOR RIGHT	VNN2C1(SOFT)	447119-01	1	1	1	1	1	1	1	1	1	1

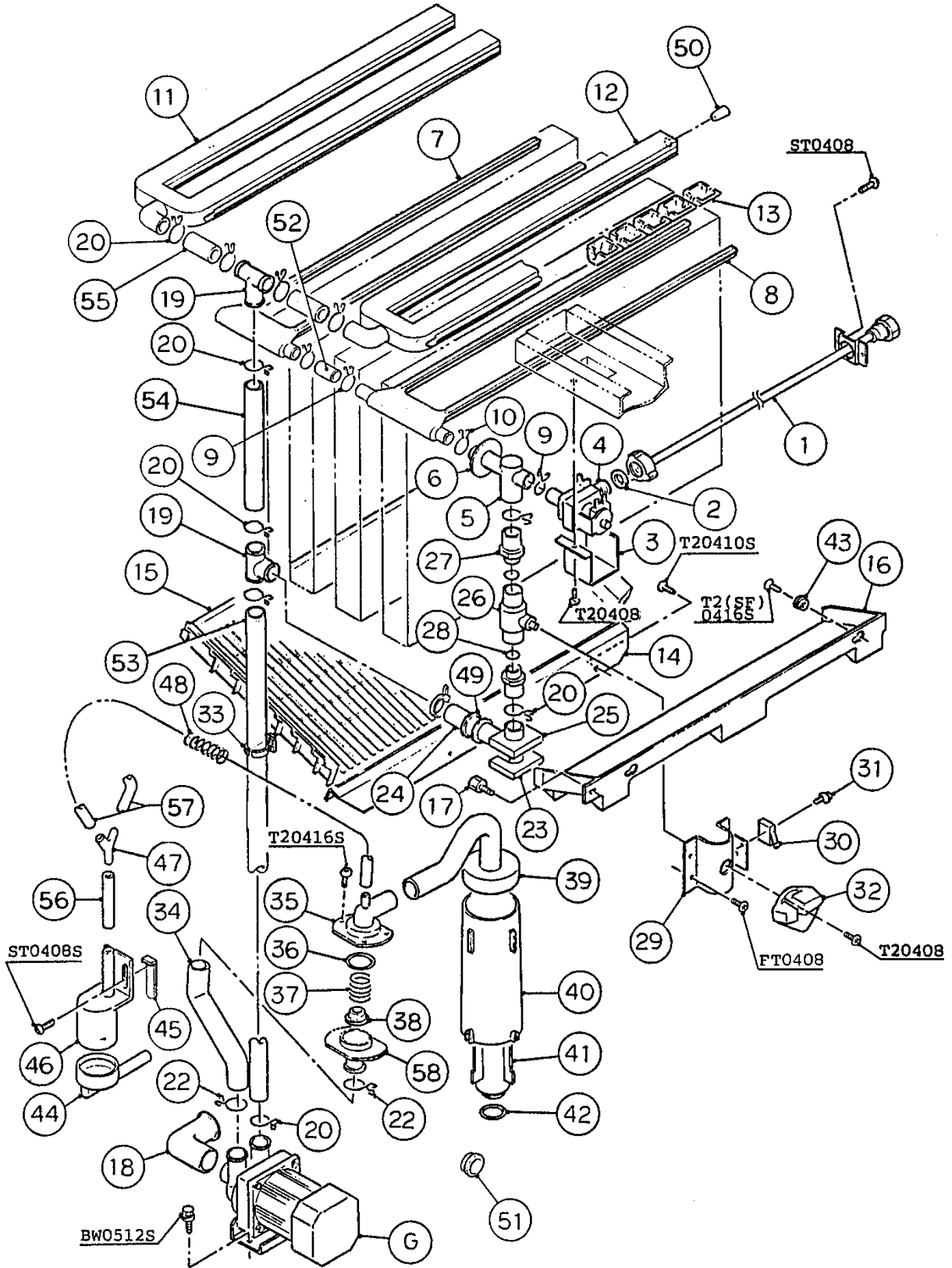


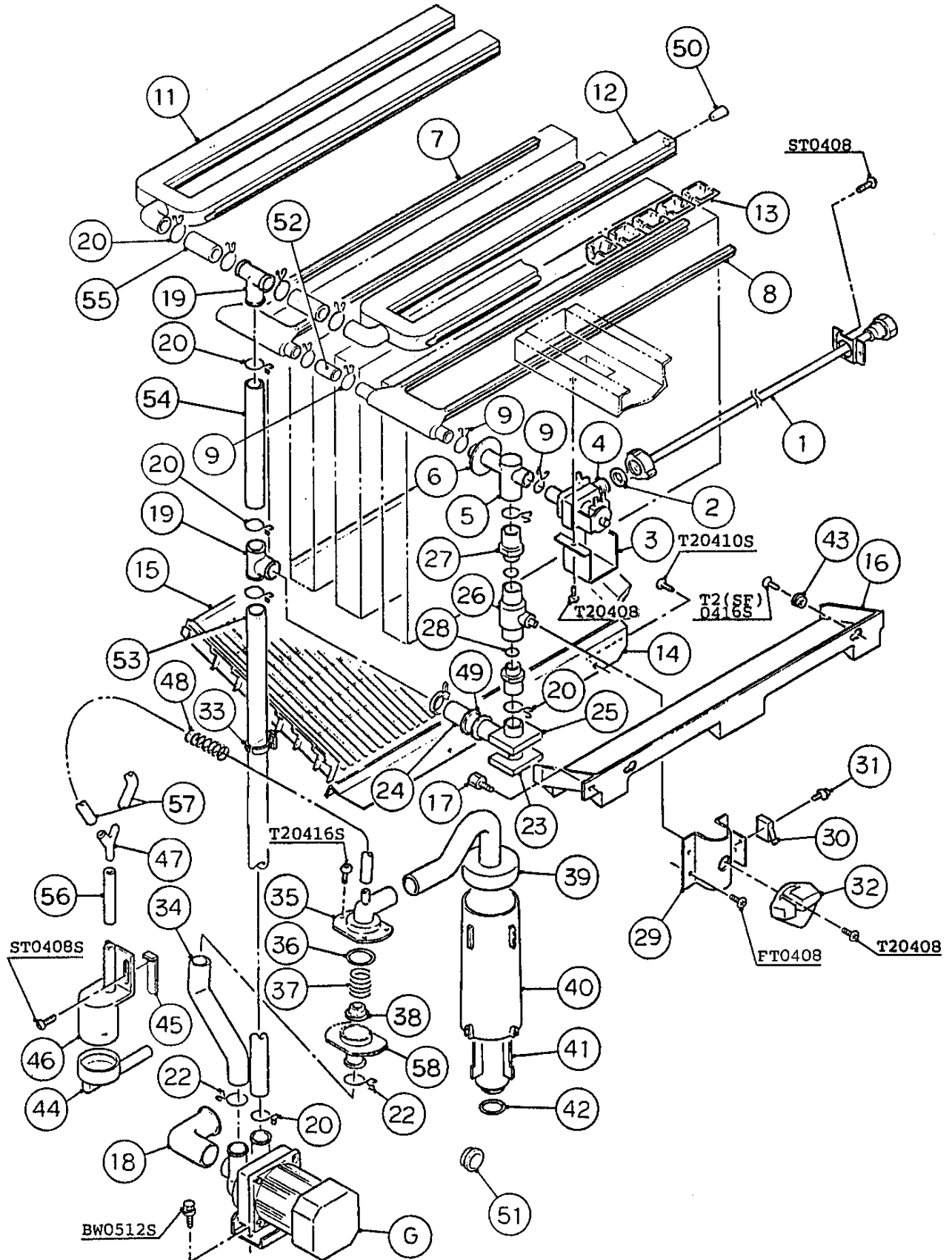
HA

KM-1600MRE

C. WATER CIRCUIT

E-0, E-1, E-2, F-0, F-1, G-0

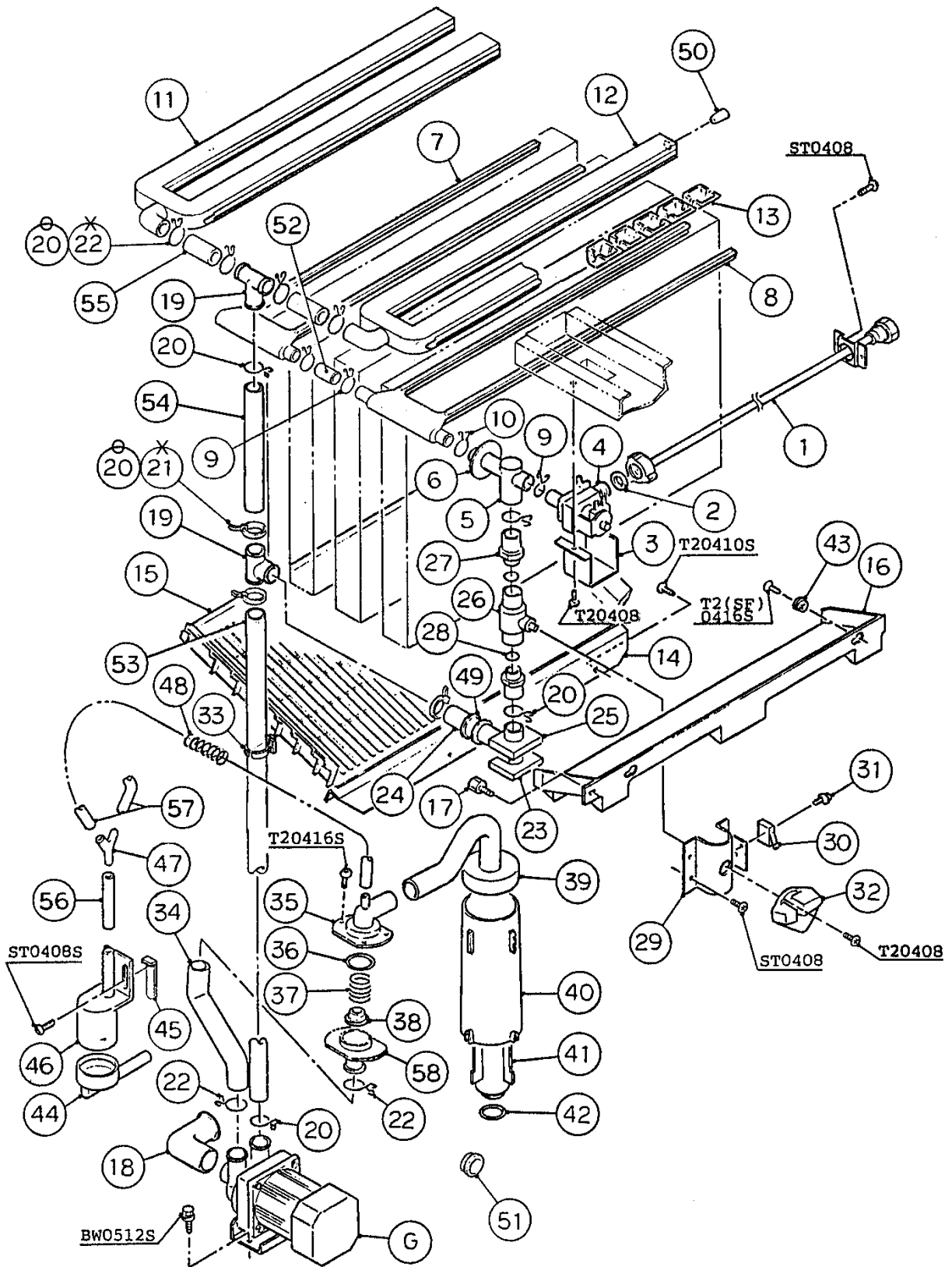


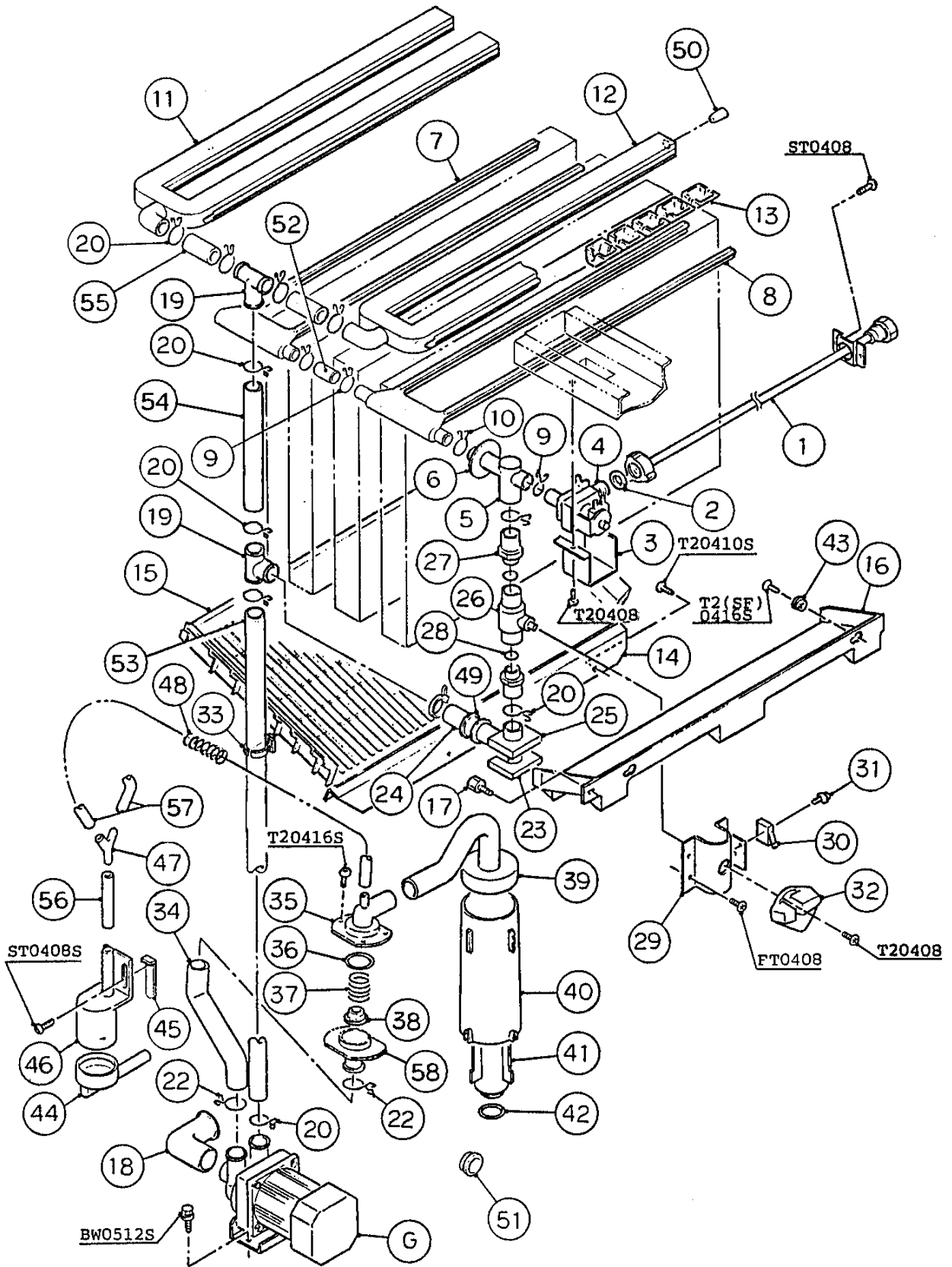


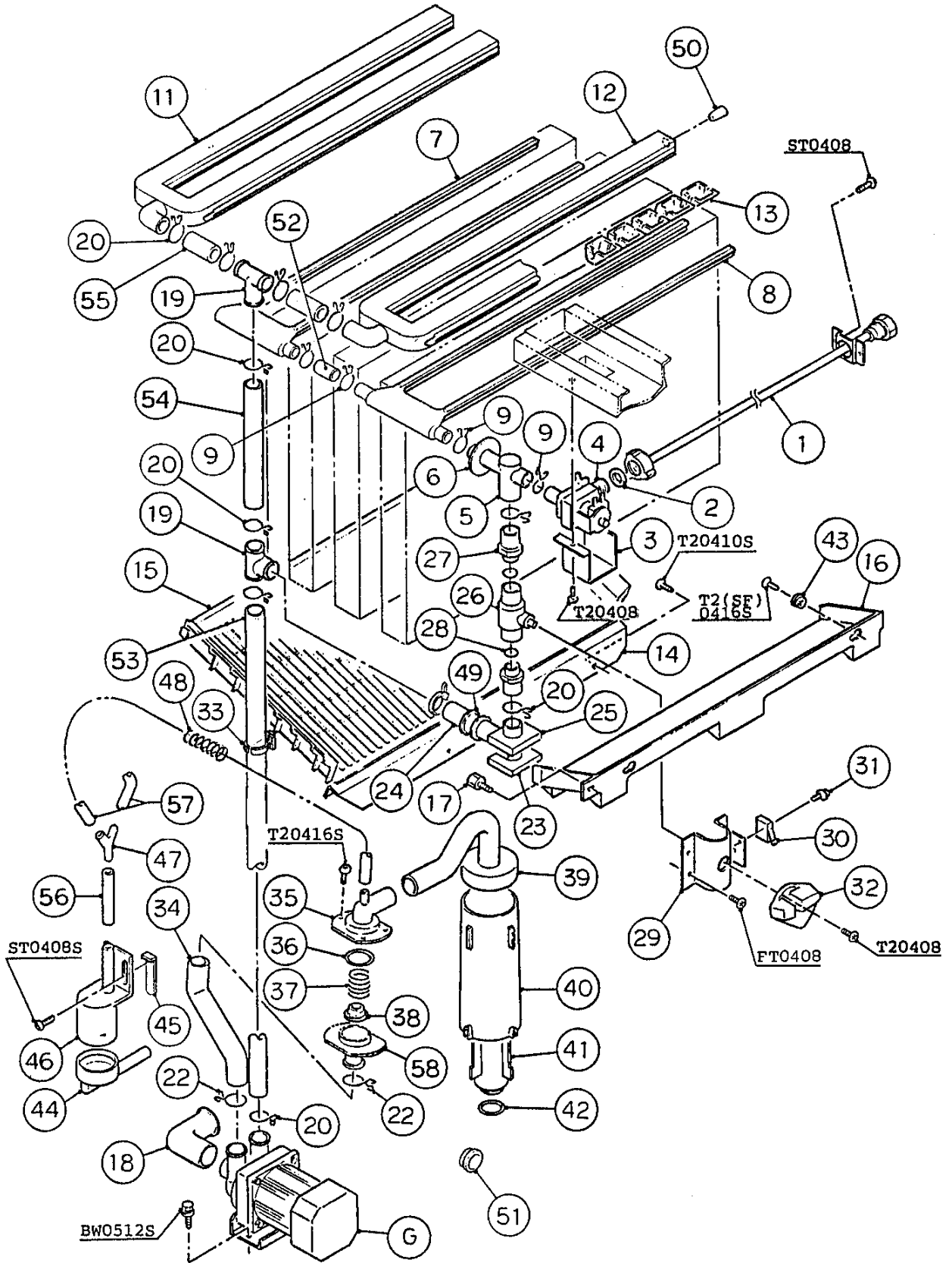
MODEL: KM-1600MRE TITLE: C. WATER CIRCUIT													
INDEX NO.	DESCRIPTION	MATERIAL OR MODEL	PART NUMBER	REQUIRED NUMBER									
				D-1	E-0	E-1	E-2	F-0	F-1	G-0	G-1	H-0	H-1
G	PUMP MOTOR ASSEMBLY	(S-0731)	215693A01	1	1	1	1	1	1	1	1	1	1
1	WATER SUPPLY PIPE	COPPER	4A0207G01	1	1	-							
		COPPER	4A0768G01			1	1	1	1	1	1	1	1
2	RUBBER GASKET	NBR	413854-01	1	1	x1							
		NBR	413854-03			o1	1	1	1	1	1	1	1
3	WATER VALVE BRACKET	GS	321443-01	1	1	1	1	1	1	1	1	1	1
4	WATER VALVE	J248-030	3U0111-01	1	1	1	1	1	1	1	1	1	1
5	TEE	EPDM	4A0177-01	1	1	1	1	1	1	1	1	1	1
6	FLANGE	EPDM	439267-01	1	1	1	1	1	1	1	1	1	1
7	WATER SUPPLY TUBE	PE	2A0079-01	1	1	1	1	1	1	1	1	1	1
8	WATER SUPPLY TUBE	PE	2A0079-02	1	1	1	1	1	1	1	1	1	1
9	HOSE CLAMP	SS, 18MM	427443-05	3	3	3	3	3	3	3	4	4	4
10	HOSE CLAMP	SS, 20MM	427443-06	1	1	1	1	1	1	1	-		
11	SPRAY TUBE	PE	1A0019-02	1	1	1	1	1	1	1	1	1	x1
		PE	1A0260-02										o1
12	SPRAY TUBE	PE	1A0019-01	1	1	1	1	1	1	1	1	1	x1
		PE	1A0260-01										o1
13	SPRAY GUIDE (A)	PE	208586-01	12	12	12	12	12	12	12	12	12	12
14	PLATE	SS	3A0133-01	1	1	1	1	1	1	1	1	1	1
15	CUBE GUIDE (A)	ABS	214905-01	1	1	1	1	1	1	1	1	1	1
16	CUBE GUIDE (B)	ABS	322644-02	1	1	1	1	1	1	1	1	1	1
17	THUMBSCREW	ABS, SS	415949G01	1	1	1	1	1	1	1	1	1	1
18	HOSE (A)	EPDM	435091-01	1	1	1	1	1	1	1	1	1	1
19	DISTRIBUTOR	ABS	432426-01	2	2	2	2	2	2	2	2	2	2
20	HOSE CLAMP	SS, 25MM	427443-03	4									
				11	11	11	11	11	11	11	11	11	11
21	CABLE TIE	CV-200	7920-0010	3									
				-									
22	HOSE CLAMP	SS, 27MM	427443-08	6									
				2	2	2	2	2	2	2	2	2	2

MODEL: KM-1600MRE TITLE: C. WATER CIRCUIT													
INDEX NO.	DESCRIPTION	MATERIAL OR MODEL	PART NUMBER	REQUIRED NUMBER									
				D-1	E-0	E-1	E-2	F-0	F-1	G-0	G-1	H-0	H-1
23	CORNER INSULATION (A)	PE FOAM	439376-01	1	1	1	1	1	1	1	1	1	1
24	BYPASS HOSE	EPDM	439265-01	1	1	1	1	1	1	1	1	1	1
25	CORNER INSULATION (B)	PE FOAM	439392-01	1	1	1	1	1	1	1	1	1	1
26	BALL VALVE	-	439293-01	1	1	1	1	1	1	1	1	1	1
27	MALE ADAPTOR	ABS	325826-01	2	2	2	2	2	2	2	2	2	2
28	"O" RING	1AP18	7611-P018	2	2	2	2	2	2	2	2	2	2
29	VALVE HOLDER	GS	325825-01	1	1	1	1	1	1	1	1	1	1
30	MICRO SWITCH	V3L-111-D8	4A0365-01	1	1	1	1	1	1	1	1	1	1
31	TAPPING SCREW	3x14	431415-02	2	2	2	2	2	2	2	2	2	2
32	HANDLE	PP	215383-01	1	1	1	1	1	1	1	1	1	1
33	HOLDER	PP	322692-01	1	1	1	1	1	1	1	1	1	1
34	DRAIN HOSE	EPDM	435092-01	1	1	1	1	1	1	1	1	1	1
35	DRAIN VALVE (B)	ABS	322693-01	1	1	1	1	1	1	1	1	1	x1
		-	3A1170-01										o1
36	"O" RING	1AG35	7611-G035	1	1	1	1	1	1	1	1	1	1
37	SPRING	SS	322685-01	1	1	1	1	1	1	1	1	1	1
38	VALVE SHEET	EPDM	433705-01	1	1	1	1	1	1	1	1	1	1
39	HOSE (C)	EPDM	326655-01	1	1	1	1	1	1	1	1	1	1
40	OVERFLOW CAP	ABS	322816-01	1	1	1	1	1	1	1	1	1	1
41	OVERFLOW PIPE	ABS	322691-01	1	1	1	1	1	1	1	1	1	1
42	"O" RING	1AP32	7611-P032	1	1	1	1	1	1	1	x1		
		-	4A1234-01								o1	1	1
43	COLLAR	ABS	435269-01	2	2	2	2	2	2	2	2	2	2
44	CONNECTOR - FLOAT SWITCH	EPDM	426799-01	1	1	1	1	1	1	1	1	1	1
45	FLOAT SWITCH STOP	SS	4A0137-01	1	1	1	1	1	1	1	1	1	1
46	FLOAT SWITCH	FS-0893A-2	430417-02	1	1	1	1	1	x1				
		163790	4A0886-02						o1	1	1	1	1
47	CONNECTOR	ABS	432763-01	1	1	1	1	1	1	1	1	1	1
48	SPRING	SS	435825-01	1	1	1	1	1	1	1	1	1	1
49	RUBBER RING	EPDM	439236-01	1	1	1	1	1	1	1	1	1	1

MODEL: KM-1600MRE TITLE: C. WATER CIRCUIT													
INDEX NO.	DESCRIPTION	MATERIAL OR MODEL	PART NUMBER	REQUIRED NUMBER									
				D-1	E-0	E-1	E-2	F-0	F-1	G-0	G-1	H-0	H-1
50	PLUG	EPDM	4A0176-01	4	4	4	4	4	4	4	4	4	4
51	BUSHING	SB-1093-15	420470-03	1	1	1	1	1	1	1	1	1	x1
		SB-1500-21	420470-06										o2
52	VINYL HOSE	L=30	7716-1216	x1									
		L=58	7716-1216	o1	1	-							
		L=58	7716-1519			1	1	1	1	1	1	1	1
53	VINYL HOSE	L=670	7716-2025	1	1	1	1	1	1	1	1	1	
54	VINYL HOSE	L=190	7716-2025	x1									
		L=200	7716-2025	o1	1	1	1	1	1	1	1	1	1
55	VINYL HOSE	L=55	7716-2025	x2									
		L=63	7716-2025	o2	2	2	2	2	2	2	2	2	2
56	VINYL HOSE	L=80	7716-0913	1	1	1	1	1	1	1	1	x1	
	SILICONE HOSE	L=80	7730I3812									o1	1
57	VINYL HOSE	L=180	7716-0913	2	2	2	2	2	2	2	2	2	
58	VALVE HOUSING DRAIN	ABS	435054-01	1	1	1	1	1	1	1	1	1	



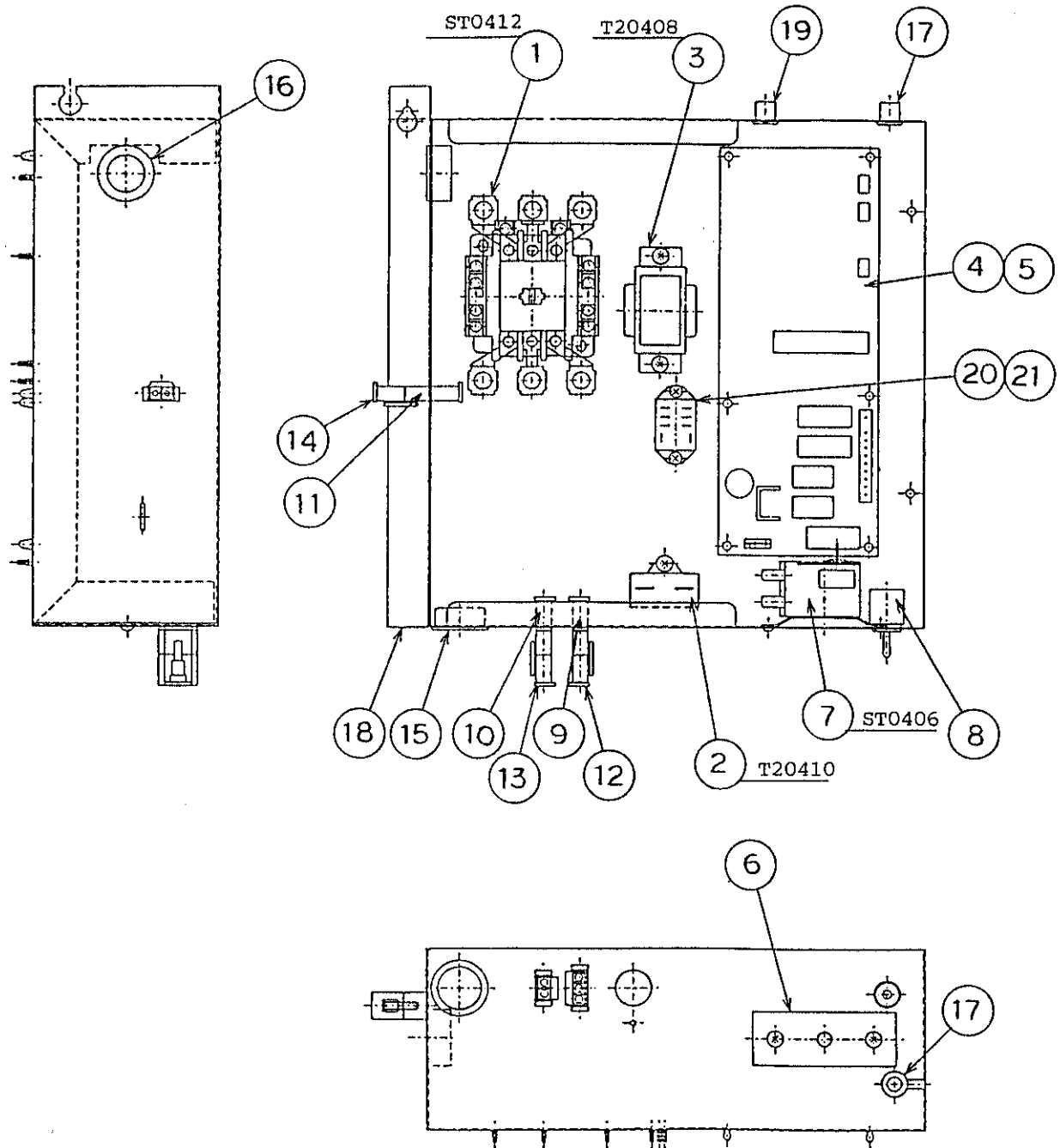


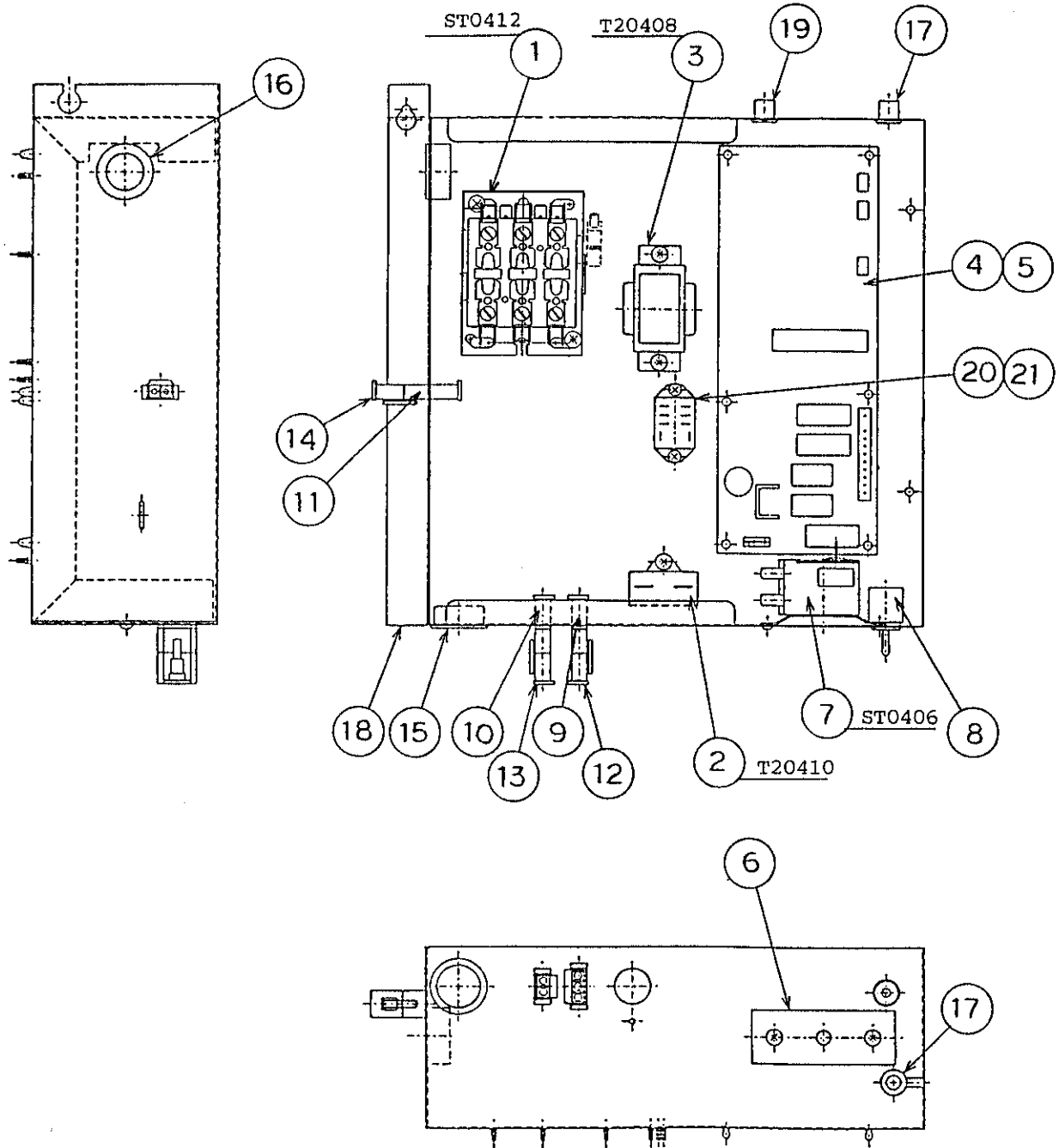


MODEL: KM-1600MRE3 TITLE: C. WATER CIRCUIT													
INDEX NO.	DESCRIPTION	MATERIAL OR MODEL	PART NUMBER	REQUIRED NUMBER									
				D-1	E-0	E-1	E-2	F-1	F-2	G-0	G-1 H-0	H-1	H-2
G	PUMP MOTOR ASSEMBLY	(S-0731)	215693A01	1	1	1	1	1	1	1	1	1	1
1	WATER SUPPLY PIPE	COPPER	4A0207G01	1	1	-							
		COPPER	4A0768G01			1	1	1	1	1	1	1	1
2	RUBBER GASKET	NBR	413854-01	1	1	x1							
		NBR	413854-03			o1	1	1	1	1	1	1	1
3	WATER VALVE BRACKET	GS	321443-01	1	1	1	1	1	1	1	1	1	1
4	WATER VALVE	J248-030	3U0111-01	1	1	1	1	1	1	1	1	1	1
5	TEE	EPDM	4A0177-01	1	1	1	1	1	1	1	1	1	1
6	FLANGE	EPDM	439267-01	1	1	1	1	1	1	1	1	1	1
7	WATER SUPPLY TUBE	PE	2A0079-01	1	1	1	1	1	1	1	1	1	1
8	WATER SUPPLY TUBE	PE	2A0079-02	1	1	1	1	1	1	1	1	1	1
9	HOSE CLAMP	SS, 18MM	427443-05	3	3	3	3	3	3	3	4	4	4
10	HOSE CLAMP	SS, 20MM	427443-06	1	1	1	1	1	1	1	-		
11	SPRAY TUBE	PE	1A0019-02	1	1	1	1	1	1	1	1	x1	
		PE	1A0260-02									o1	1
12	SPRAY TUBE	PE	1A0019-01	1	1	1	1	1	1	1	1	x1	
		PE	1A0260-01									o1	1
13	SPRAY GUIDE (A)	PE	208586-01	12	12	12	12	12	12	12	12	12	12
14	PLATE	SS	3A0133-01	1	1	1	1	1	1	1	1	1	1
15	CUBE GUIDE (A)	ABS	214905-01	1	1	1	1	1	1	1	1	1	1
16	CUBE GUIDE (B)	ABS	322644-02	1	1	1	1	1	1	1	1	1	1
17	THUMBSCREW	ABS, SS	415949G01	1	1	1	1	1	1	1	1	1	1
18	HOSE (A)	EPDM	435091-01	1	1	1	1	1	1	1	1	1	1
19	DISTRIBUTOR	ABS	432426-01	2	2	2	2	2	2	2	2	2	2
20	HOSE CLAMP	SS, 25MM	427443-03	4									
				11	11	11	11	11	11	11	11	11	11
21	CABLE TIE	CV-200	7920-0010	3									
				-									
22	HOSE CLAMP	SS, 27MM	427443-08	6									
				2	2	2	2	2	2	2	2	2	2

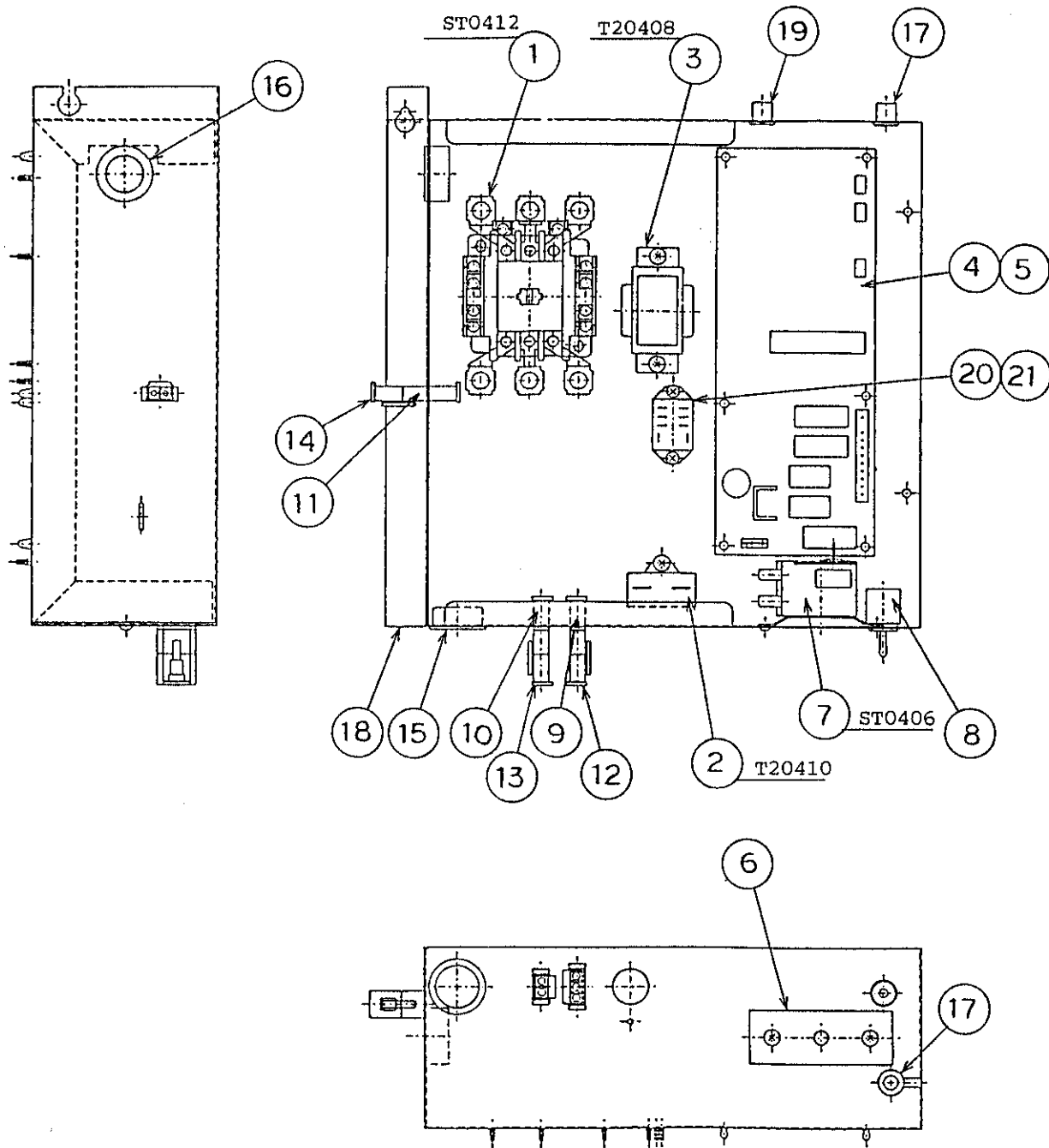
MODEL: KM-1600MRE3 TITLE: C. WATER CIRCUIT													
INDEX NO.	DESCRIPTION	MATERIAL OR MODEL	PART NUMBER	REQUIRED NUMBER									
				D-1	E-0	E-1	E-2	F-1	F-2	G-0	G-1 H-0	H-1	H-2
23	CORNER INSULATION (A)	PE FOAM	439376-01	1	1	1	1	1	1	1	1	1	1
24	BYPASS HOSE	EPDM	439265-01	1	1	1	1	1	1	1	1	1	1
25	CORNER INSULATION (B)	PE FOAM	439392-01	1	1	1	1	1	1	1	1	1	1
26	BALL VALVE	-	439293-01	1	1	1	1	1	1	1	1	1	1
27	MALE ADAPTOR	ABS	325826-01	2	2	2	2	2	2	2	2	2	2
28	"O" RING	1AP18	7611-P018	2	2	2	2	2	2	2	2	2	2
29	VALVE HOLDER	GS	325825-01	1	1	1	1	1	1	1	1	1	1
30	MICRO SWITCH	V3L-111-D8	4A0365-01	1	1	1	1	1	1	1	1	1	1
31	TAPPING SCREW	3x14	431415-02	2	2	2	2	2	2	2	2	2	2
32	HANDLE	PP	215383-01	1	1	1	1	1	1	1	1	1	1
33	HOLDER	PP	322692-01	1	1	1	1	1	1	1	1	1	1
34	DRAIN HOSE	EPDM	435092-01	1	1	1	1	1	1	1	1	1	1
35	DRAIN VALVE (B)	ABS	322693-01	1	1	1	1	1	1	1	1	x1	
		-	3A1170-01									o1	1
36	"O" RING	1AG35	7611-G035	1	1	1	1	1	1	1	1	1	1
37	SPRING	SS	322685-01	1	1	1	1	1	1	1	1	1	1
38	VALVE SHEET	EPDM	433705-01	1	1	1	1	1	1	1	1	1	1
39	HOSE (C)	EPDM	326655-01	1	1	1	1	1	1	1	1	1	1
40	OVERFLOW CAP	ABS	322816-01	1	1	1	1	1	1	1	1	1	1
41	OVERFLOW PIPE	ABS	322691-01	1	1	1	1	1	1	1	1	1	1
42	"O" RING	1AP32	7611-P032	1	1	1	1	1	1	1	x1		
		-	4A1234-01								o1	1	1
43	COLLAR	ABS	435269-01	2	2	2	2	2	2	2	2	2	2
44	CONNECTOR - FLOAT SWITCH	EPDM	426799-01	1	1	1	1	1	1	1	1	1	1
45	FLOAT SWITCH STOP	SS	4A0137-01	1	1	1	1	1	1	1	1	1	1
46	FLOAT SWITCH	FS-0893A-2	430417-02	1	1	1	1	1	x1				
		163790	4A0886-02						o1	1	1	1	1

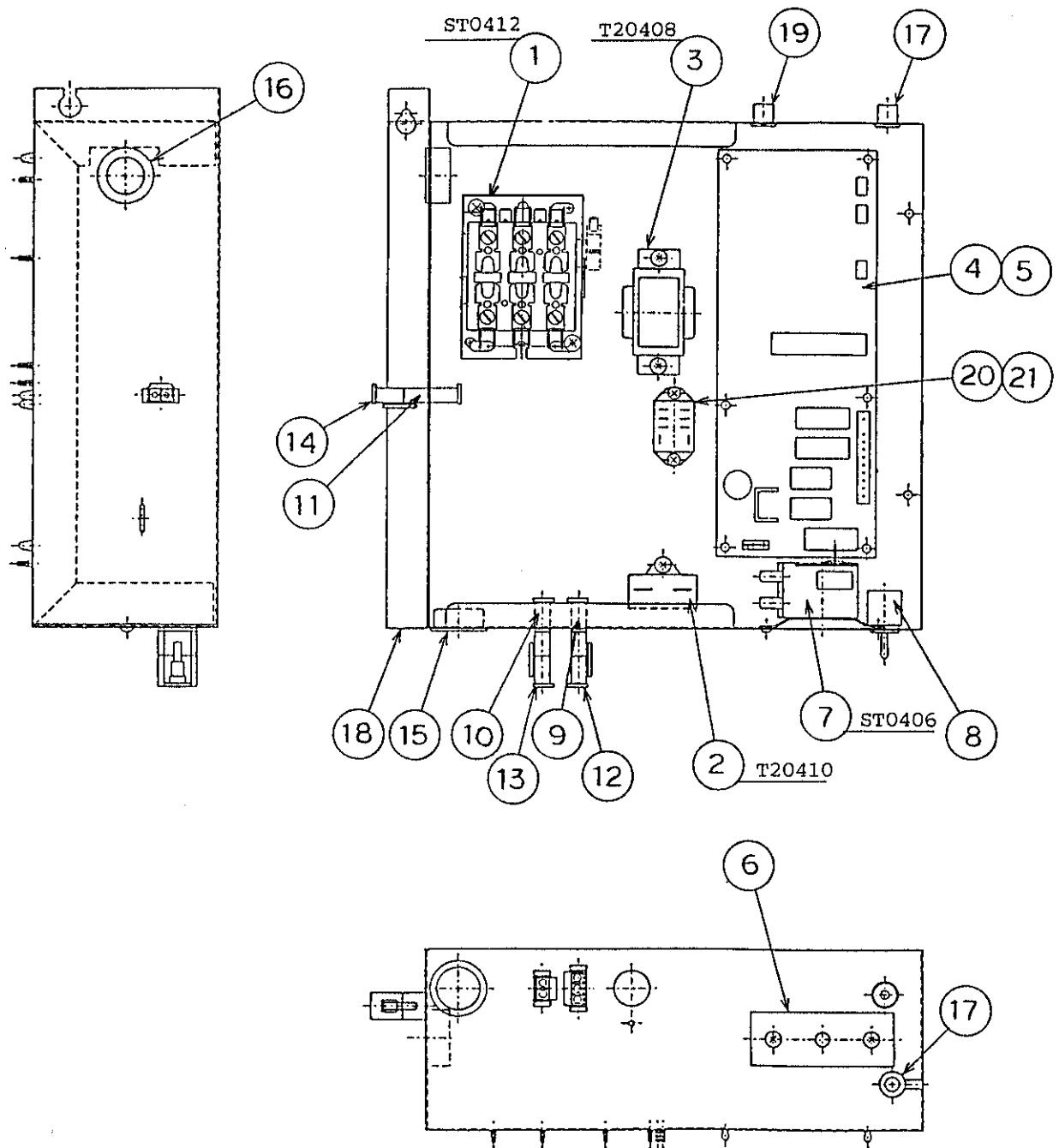
MODEL: KM-1600MRE3 TITLE: C. WATER CIRCUIT													
INDEX NO.	DESCRIPTION	MATERIAL OR MODEL	PART NUMBER	REQUIRED NUMBER									
				D-1	E-0	E-1	E-2	F-1	F-2	G-0	G-1	H-0 H-1	H-2
47	CONNECTOR	ABS	432763-01	1	1	1	1	1	1	1	1	1	1
48	SPRING	SS	435825-01	1	1	1	1	1	1	1	1	1	1
49	RUBBER RING	EPDM	439236-01	1	1	1	1	1	1	1	1	1	1
50	PLUG	EPDM	4A0176-01	4	4	4	4	4	4	4	4	4	4
51	BUSHING	SB-1093-15	420470-03	1	1	1	1	1	1	1	1	1	x1
		-	420470-06										o2
52	VINYL HOSE	L=30	7716-1216	x1									
		L=58	7716-1216	o1	1	-							
		L=58	7716-1519			1	1	1	1	1	1	1	1
53	VINYL HOSE	L=670	7716-2025	1	1	1	1	1	1	1	1	1	1
54	VINYL HOSE	L=190	7716-2025	x1									
		L=200	7716-2025	o1	1	1	1	1	1	1	1	1	1
55	VINYL HOSE	L=55	7716-2025	x2									
		L=63	7716-2025	o2	2	2	2	2	2	2	2	2	2
56	VINYL HOSE	L=80	7716-0913	1	1	1	1	1	1	1	1	x1	
	SILICONE HOSE	L=80	7730I3812									o1	1
57	VINYL HOSE	L=180	7716-0913	2	2	2	2	2	2	2	2	2	2
58	VALVE HOUSING DRAIN	ABS	435054-01	1	1	1	1	1	1	1	1	1	1





MODEL: KM-160MRE TITLE: D. CONTROL BOX ASSEMBLY													
INDEX NO.	DESCRIPTION	MATERIAL OR MODEL	PART NUMBER	REQUIRED NUMBER									
				D-1	E-0	E-1	E-2	F-0	F-1	G-0	G-1	H-0	H-1
1	MAGNETIC CONTACTOR	C-25E	438215-01	1	1	1	1	1	1	x1			
		A77-309040A-226	4A0794-01							o1	1	1	1
2	CAPACITOR	250V, 10MFD	443192-01	1	1	1	1	1	1	1	1	1	1
3	TRANSFORMER	26D285H	3A0172-01	1	1	1	1	1	1	1	1	1	1
4	CONTROLLER BOARD	MY9KM910	2U0127-01	1	1	1	1	1	1	1	1	1	1
5	BOARD SUPPORT	CBLS37-M	4A0336-03	6	6	6	6	6	6	6	6	6	6
6	CONTROL LABEL	PES FILM	434934-01	1	1	1	1	1	1	1	1	1	1
7	THERMOSTAT	A30-3815-00	439678-01	1	x1								
			4A0738-01		o1	1	1	1					
			4A0824-01					o1	1	1	1	1	1
8	TOGGLE SWITCH	-	443119-01	1	1	1	1	1	1	1	1	1	1
9	3P PLUG HOUSING	3191-03P	412832-06	1	1	1	1	1	1	1	1	1	1
10	2P PLUG HOUSING	3191-02P	412832-07	1	1	1	1	1	1	1	1	1	1
11	2P PLUG HOUSING	3190-02P (RED)	412832-09	1	1	1	1	1	1	1	1	1	1
12	3P RECEPTACLE HOUSING	3191-03R1	412831-06	1	1	1	1	1	1	1	1	1	1
13	2P RECEPTACLE HOUSING	3191-02R1	412831-07	1	1	1	1	1	1	1	1	1	1
14	2P RECEPTACLE HOUSING	3191-02R1 (RED)	412831-09	1	1	1	1	1	1	1	1	1	1
15	BUSHING	SB-1093-15	420470-03	1	1	1	1	1	1	1	1	1	1
16	BUSHING	SB-1093-13	420470-12	1	1	1	1	1	1	1	1	1	1
17	BUSHING	OCB-500	428394-02	2	2	2	2	2	2	2	2	2	2
18	CONT. BOX	GS	2A0121G05	1	1	1	1	1	1	1	1	1	1
19	BUSHING	OCB-875	428394-04	1	1	1	1	1	1	1	1	1	1
20	RELAY	LY2F, AC120V	406132-07	1	1	1	1	1	1	1	1	1	1
21	TAPPING SCREW	3x8, STEEL	431415-01	2	2	2	2	2	2	2	2	2	2





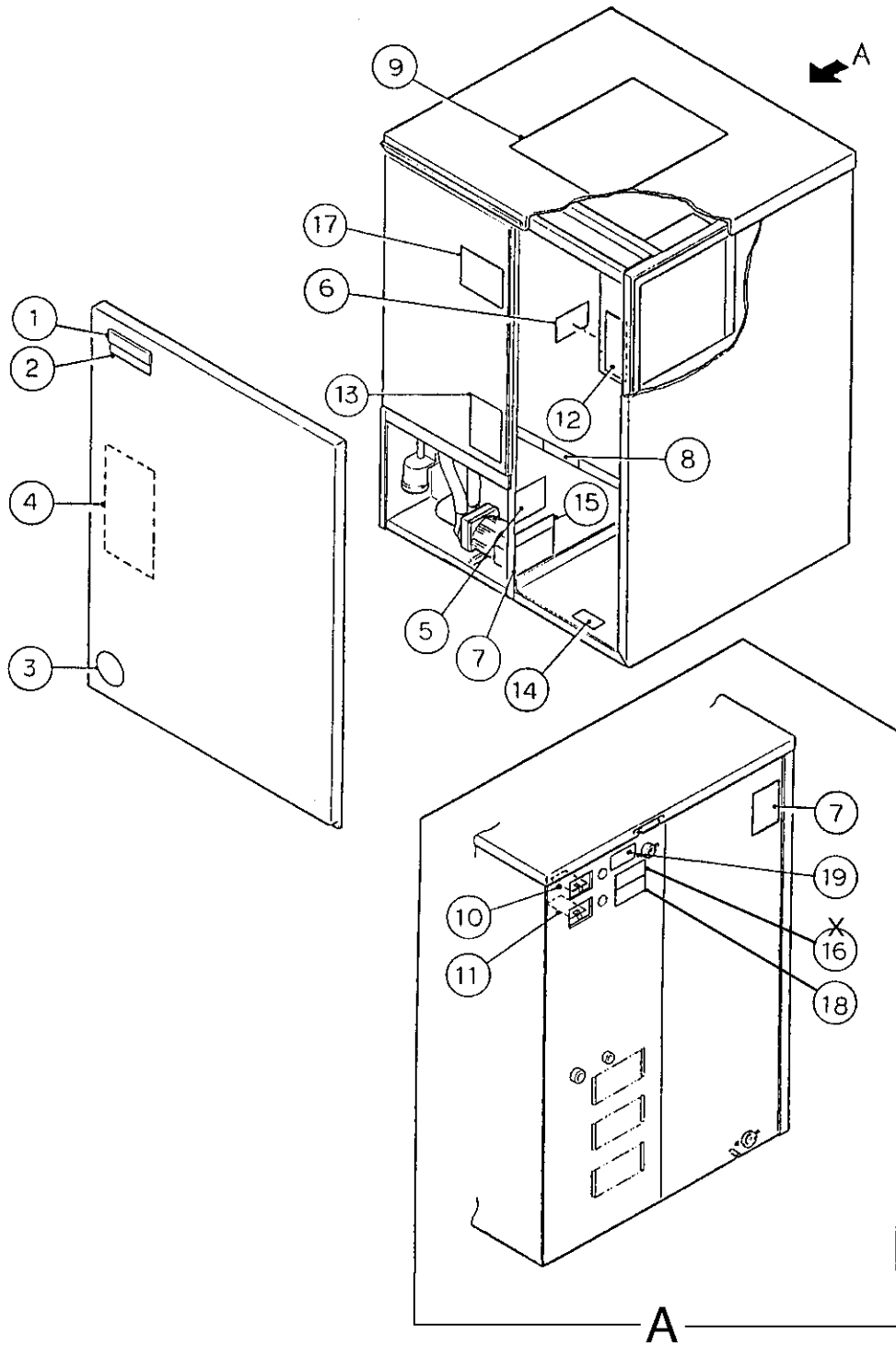
MODEL: KM-1600MRE3 TITLE: D. CONTROL BOX ASSEMBLY													
INDEX NO.	DESCRIPTION	MATERIAL OR MODEL	PART NUMBER	REQUIRED NUMBER									
				D-1	E-0	E-1	E-2	F-1	F-2	G-0 G-1	H-0	H-1	H-2
1	MAGNETIC CONTACTOR	C-25E	438215-01	1	1	1	1	1	1	x1			
		A77-309040A-226	4A0794-01							o1	1	1	1
2	CAPACITOR	250V, 10MFD	443192-01	1	1	1	1	1	1	1	1	1	1
3	TRANSFORMER	26D285H	3A0172-01	1	1	1	1	1	1	1	1	1	1
4	CONTROLLER BOARD	MY9KM910	2U0127-01	1	1	1	1	1	1	1	1	1	1
5	BOARD SUPPORT	CBLS37-M	4A0336-03	6	6	6	6	6	6	6	6	6	6
6	CONTROL LABEL	PES FILM	434934-01	1	1	1	1	1	1	1	1	1	1
7	THERMOSTAT	A30-3815-00	439678-01	1	x1								
			4A0738-01		o1	1	1	x1					
			4A0824-01					o1	1	1	1	1	1
8	TOGGLE SWITCH		443119-01	1	1	1	1	1	1	1	1	1	1
9	3P PLUG HOUSING	3191-03P	412832-06	1	1	1	1	1	1	1	1	1	1
10	2P PLUG HOUSING	3191-02P	412832-07	1	1	1	1	1	1	1	1	1	1
11	2P PLUG HOUSING	3190-02P (RED)	412832-09	1	1	1	1	1	1	1	1	1	1
12	3P RECEPTACLE HOUSING	3191-03R1	412831-06	1	1	1	1	1	1	1	1	1	1
13	2P RECEPTACLE HOUSING	3191-02R1	412831-07	1	1	1	1	1	1	1	1	1	1
14	2P RECEPTACLE HOUSING	3191-02R1 (RED)	412831-09	1	1	1	1	1	1	1	1	1	1
15	BUSHING	SB-1093-15	420470-03	1	1	1	1	1	1	1	1	1	1
16	BUSHING	SB-1093-13	420470-12	1	1	1	1	1	1	1	1	1	1
17	BUSHING	OCB-500	428394-02	2	2	2	2	2	2	2	2	2	2
18	CONT. BOX	GS	2A0121G05	1	1	1	1	1	1	1	1	1	1
19	BUSHING	OCB-875	428394-04	1	1	1	1	1	1	1	1	1	1
20	RELAY	LY2F, AC120V	406132-07	1	1	1	1	1	1	1	1	1	1
21	TAPPING SCREW	3x8, STEEL	431415-01	2	2	2	2	2	2	2	2	2	2

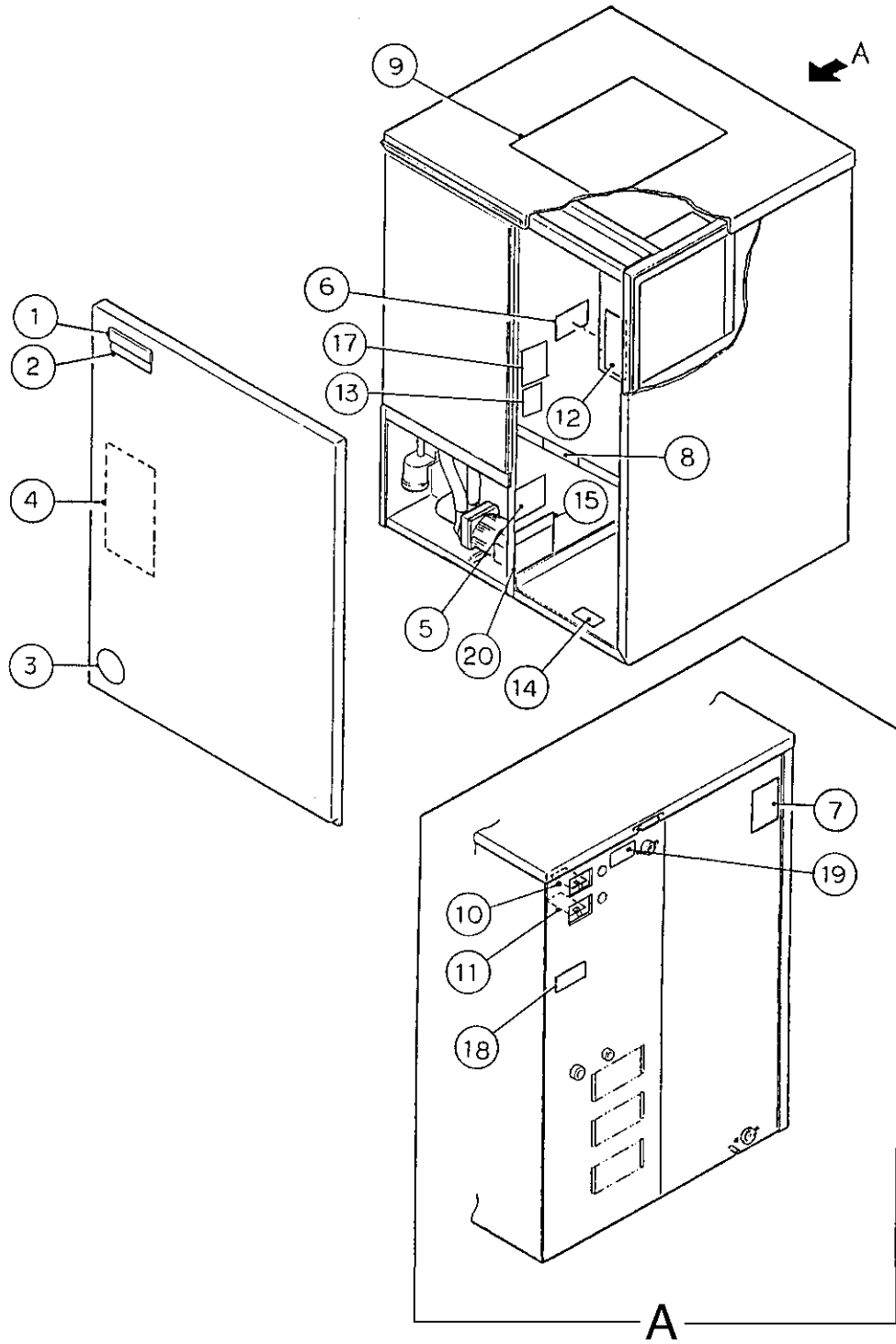
HA

KM-1600MRE/MRE3

E. LABEL LOCATION

D-1, E-0, E-1, E-2, F-0, F-1,
F-2, G-0, G-1, H-0





MODEL: KM-1600MRE TITLE: E. LABEL LOCATION													
INDEX NO.	DESCRIPTION	MATERIAL OR MODEL	PART NUMBER	REQUIRED NUMBER									
				D-1	E-0	E-1	E-2	F-0	F-1	G-0	G-1	H-0	H-1
1	EMBLEM (L) - HOSHIZAKI	ABS	418634G01	1	1	1	1	1	x1				
	EMBLEM	ABS	4A0560-01						o1	1	1	1	1
2	MODEL NUMBER LABEL	PETP FILM	443341-27	1	1	1	1	1	1	1	1	1	1
3	LABEL - PENGUIN (R)	PETP FILM	410994-01	1	1	1	1	1	x1				
		PETP FILM	4A0526-01						o1	1	1	1	1
4	MAINTENANCE LABEL	PVC FILM	325975-01	1	1	1	1	1	1	1	1	1	1
5	CAUTION LABEL (H)	PVC FILM	439148-01	1	1	1	1	1	1	1	1	1	1
6	WIRING LABEL	PVC FILM	331184-01	1	1	1	1	1	-				
		PVC FILM	3A0478-01						1	1	1	1	1
7	NAMEPLATE	PES FILM	447727-01	2	2	2	2	2	2	2	2	2	1
8	CAUTION LABEL	PVC FILM	436198-01	1	1	1	1	1	1	1	1	1	1
9	INSTRUCTION SHEET	PAPER	219122-01	1	1	1	1	1	1	1	1	1	1
10	TAG WARNING: ELECTRICAL CONNECTION	PAPER	428430-01	1	1	1	1	1	1	1	1	1	1
11	TAG - FAN MOTOR LEADS	PAPER	420742-01	x1									
		PAPER	4A0647-01	o1	1	1	1	1	1	1	1	1	x1
		PAPER	4A1494-01										o1
12	MANUAL LABEL	PVC FILM	324476-01	1	1	1	1	1	1	1	1	1	1
13	MANUAL LABEL - BIN CONTROL	PVC FILM	322846-01	1	1	1	1	1	1	1	1	1	1
14	LABEL - R22	PES FILM	440362-01	1	1	1	1	1	1	1	1	1	1
15	LABEL - CHARGE	PES FILM	443221-06	1	1	1	1	1	1	1	1	1	1
16	LABEL - CONNECTION	PVC FILM	438234-01	-									
17	OPERATION LABEL - VALVE	PVC FILM	439541-01	1	1	1	1	1	1	1	1	1	1
18	CAUTION LABEL	PVC FILM	441890-01	1	1	1	1	1	1	1	1	1	x1
	CAUTION REMOTE LABEL	-	4A1491-01										o1
19	INSTRUCTION LABEL	PVC FILM	444575-01	1	1	1	1	1	1	1	1	1	1
20	RATING LABEL	-	4A1617-01										1

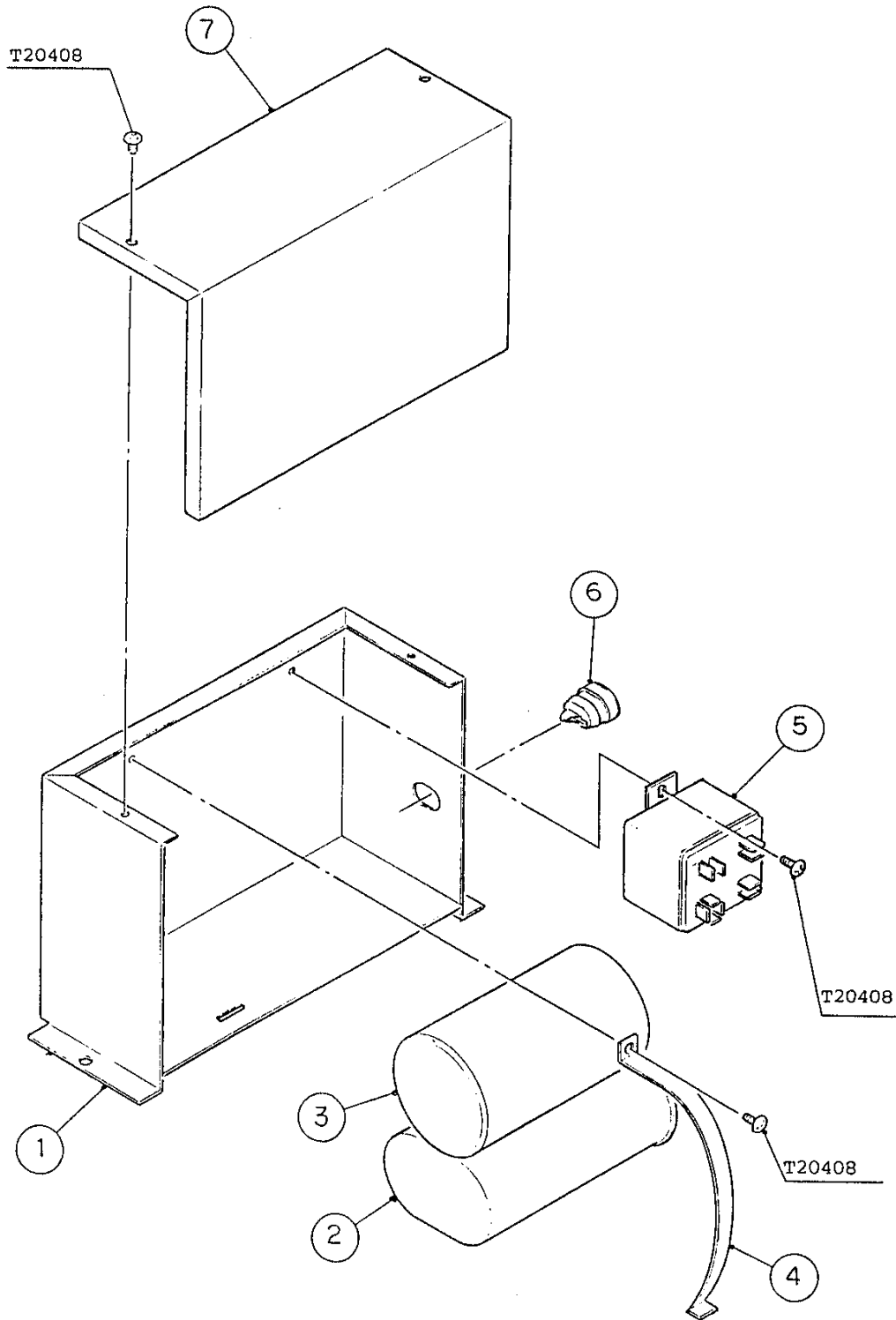
MODEL: KM-1600MRE3 TITLE: E. LABEL LOCATION													
INDEX NO.	DESCRIPTION	MATERIAL OR MODEL	PART NUMBER	REQUIRED NUMBER									
				D-1	E-0	E-1	E-2	F-1	F-2	G-0 G-1	H-0	H-1	H-2
1	EMBLEM (L) - HOSHIZAKI	ABS	418634G01	1	1	1	1	1	x1				
	EMBLEM	ABS	4A0560-01						o1	1	1	1	1
2	MODEL NUMBER LABEL	PETP FILM	443341-28	1	1	1	1	1	1	1	1	1	1
3	LABEL - PENGUIN (R)	PETP FILM	410994-01	1	1	1	1	1	x1				
		PETP FILM	4A0526-01						o1	1	1	1	1
4	MAINTENANCE LABEL	PVC FILM	325975-01	1	1	1	1	1	1	1	1	1	1
5	CAUTION LABEL (H)	PVC FILM	439148-01	1	1	1	1	1	1	1	1	1	1
6	WIRING LABEL	PVC FILM	331184-01	1	1	1	1	1	-				
		PVC FILM	3A0479-01						1	1	1	1	1
7	NAMEPLATE	PES FILM	447728-01	2	2	2	2	2	2	2	2	1	1
8	CAUTION LABEL	PVC FILM	436198-01	1	1	1	1	1	1				
9	INSTRUCTION SHEET	PAPER	219122-01	1	1	1	1	1	1				
10	TAG WARNING: ELECTRICAL CONNECTION	PAPER	438479-01	1	1	1	1	1	1				
11	TAG - FAN MOTOR LEADS	PAPER	420742-01	x1									
		PAPER	4A0647-01	o1	1	1	1	1	1	1	1	x1	
		PAPER	4A1494-01									o1	1
12	MANUAL LABEL	PVC FILM	324476-01	1	1	1	1	1	1	1	1	1	1
13	MANUAL LABEL - BIN CONTROL	PVC FILM	322846-01	1	1	1	1	1	1	1	1	1	1
14	LABEL - R22	PES FILM	440362-01	1	1	1	1	1	1	1	1	1	1
15	LABEL - CHARGE	PES FILM	443221-06	1	1	1	1	1	1	1	1	1	1
16	LABEL - CONNECTION	PVC FILM	438234-01	-									
17	OPERATION LABEL - VALVE	PVC FILM	439541-01	1	1	1	1	1	1	1	1	1	1
18	CAUTION LABEL	PVC FILM	441890-01	1	1	1	1	1	1	1	1	x1	
	CAUTION REMOTE LABEL	-	4A1491-01									o1	1
19	INSTRUCTION LABEL	PVC FILM	444575-01	1	1	1	1	1	1	1	1	1	1
20	RATING LABEL	-	4A1618-01									1	1

HA

KM-1600MRE

F. CAPACITOR BOX ASSEMBLY

D-1, E-0, E-1, E-2, F-0, F-1
G-0, G-1, H-0, H-1

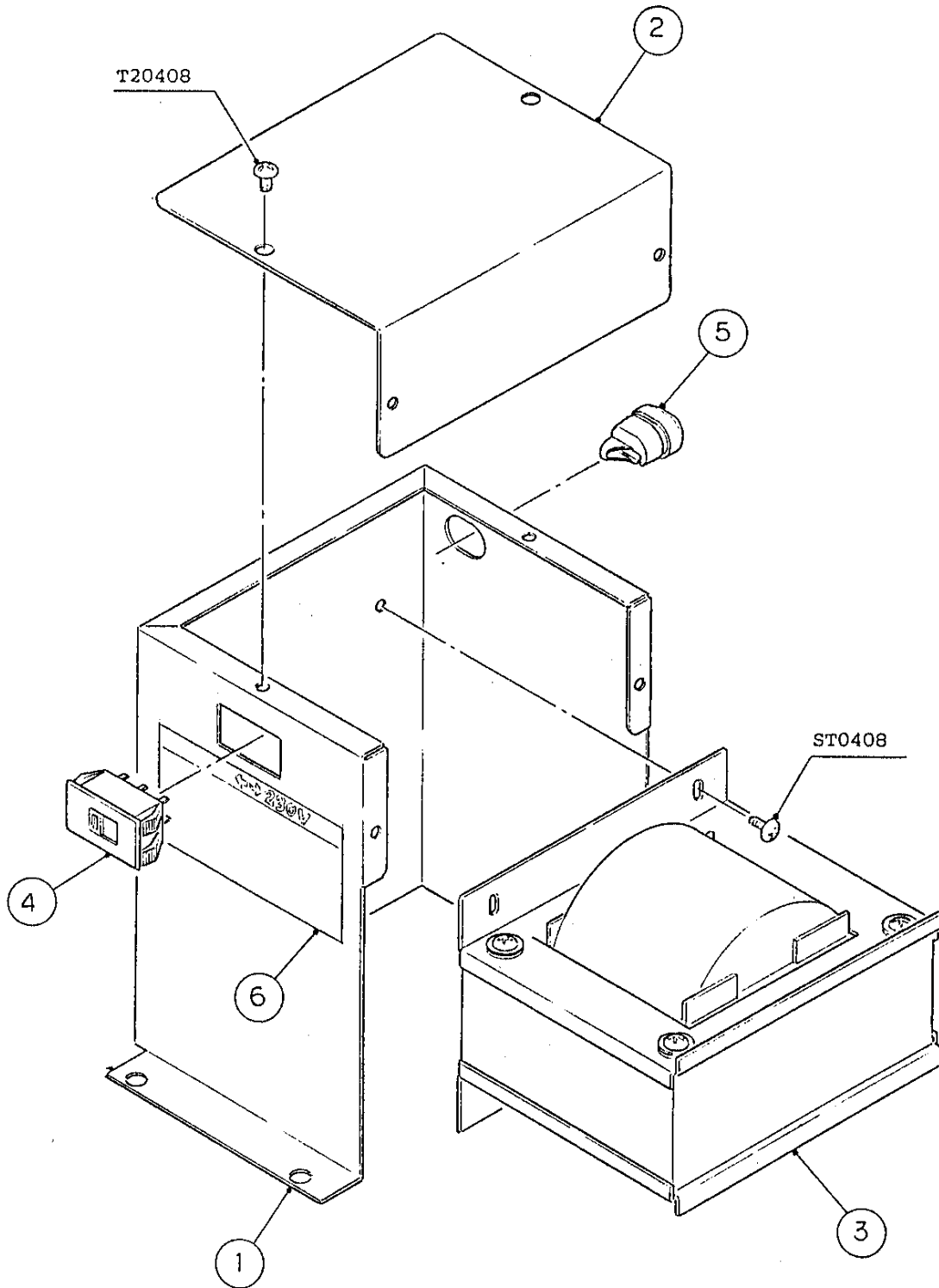


HA

KM-1600MRE3

F. TRANSFORMER BOX ASSEMBLY

D-1, E-0, E-1, E-2, F-1, F-2
G-0, G-1, H-0, H-1, H-2

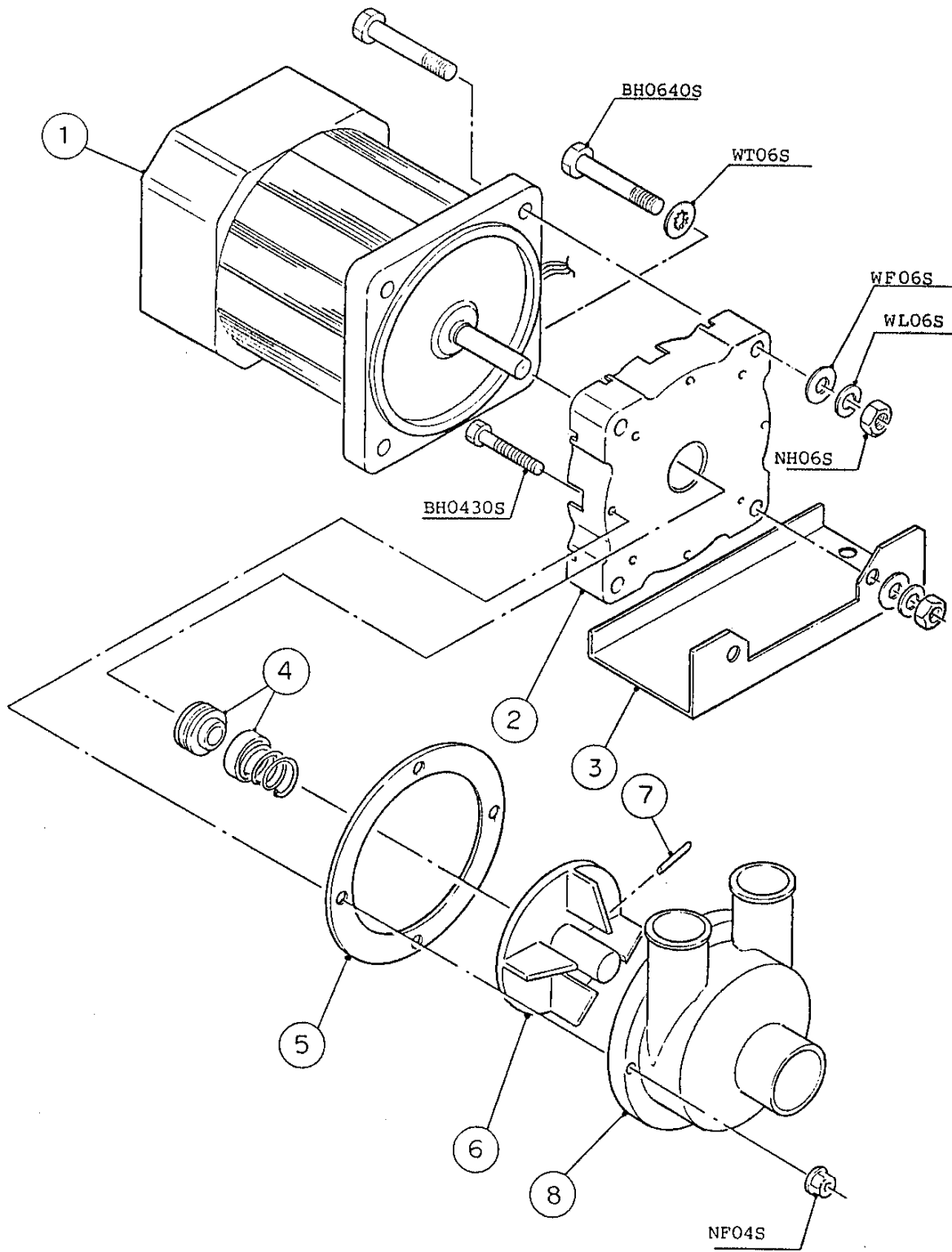


HA

KM-1600MRE/MRE3

G. PUMP MOTOR ASSEMBLY

D-1, E-0, E-1, E-2, F-0, F-1
F-2, G-0, G-1, H-0, H-1, H-2



HA

KM-1600MRE/MRE3

H. ACCESSORIES

D-1, E-0, E-1, E-2, F-0, F-1, F-2
G-0, G-1, H-0, H-1, H-2

