

CSW45 Service Parts

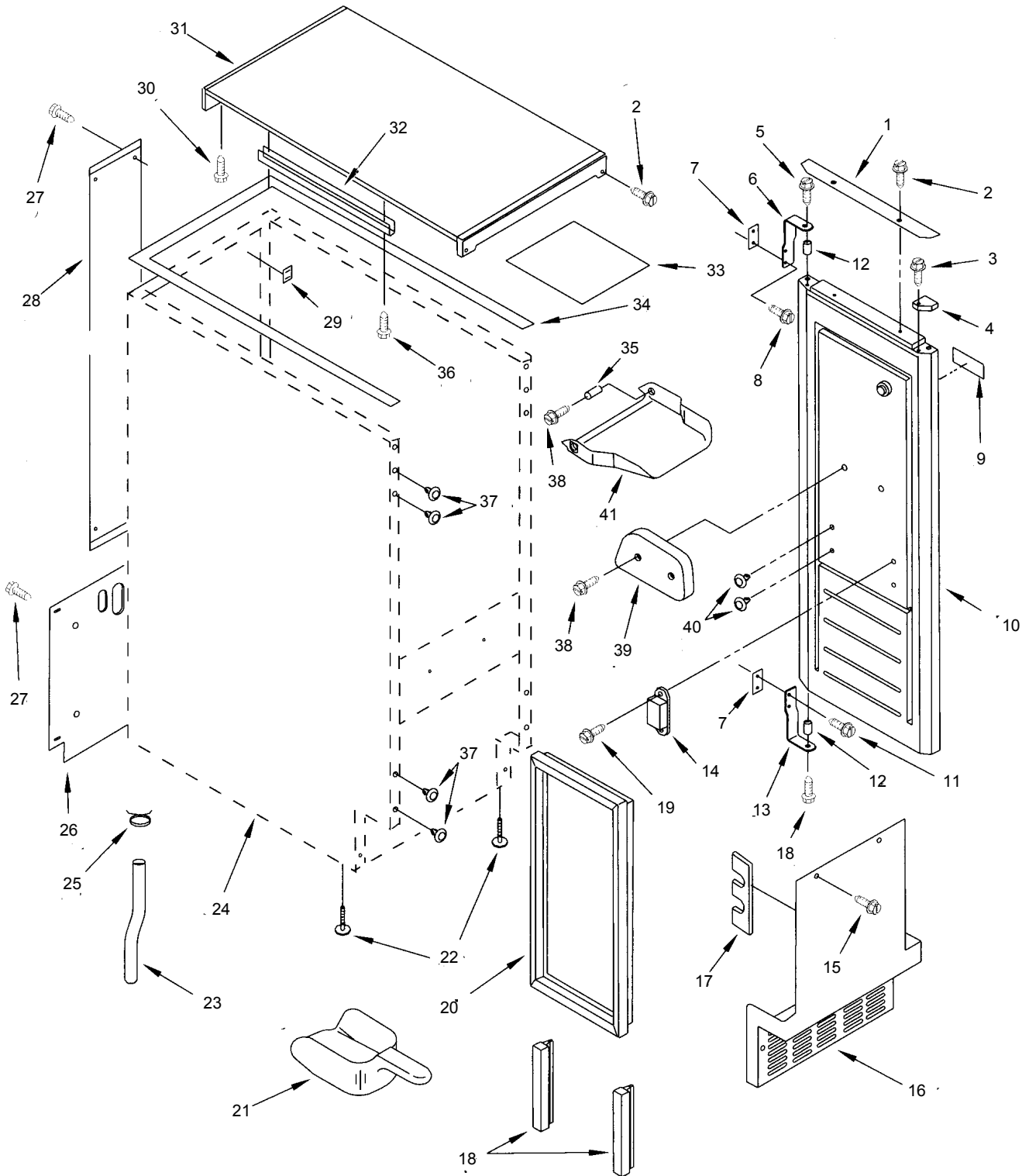
This is the list of service parts for the CSW45. Because products do change over time, be sure to obtain the complete model and serial numbers from the ice machine being serviced and use that information to confirm the part numbers.

In July 2001 the compressor was changed. CSW45A-1A and CSW45PA-1A use the original compressor and related parts, while the "B" series (CSW45A-1B and CSW45PA-1B) thru the D series use the new compressor and related parts. Be sure to check the complete model number when ordering compressor components. C and D series also have specific parts changes.

Table of Contents

Cabinet	Page 2
Cabinet Parts	Page 3
Condensing Unit	Page 4
Condensing Unit Parts	Page 5
Control Panel	Page 6
Water System	Page 7
Water System Parts	Page 8
Wiring Diagram.....	Page 9

CSW45 Service Parts Cabinet

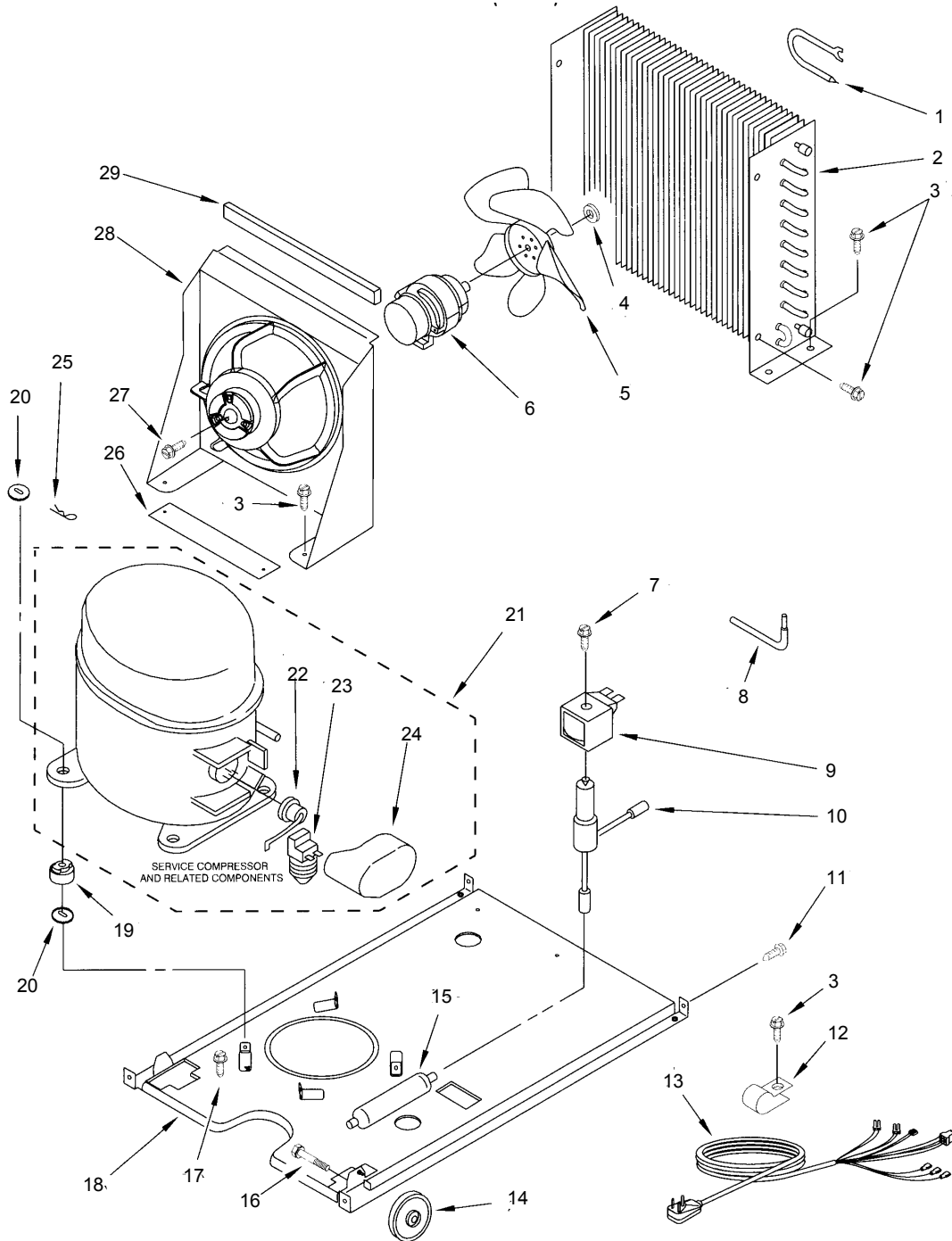


CSW45 Service Parts

Cabinet Parts

Item Number	Part Number	Description			
1	02208495W	Door handle	43	02185927	Scoop holder
2	08281137	Screw	44	0681534	Thumb screw for
3	0348689	Screw			scoop holder
4	02185655W	Left side filler			
	02185656W	Right side filler			
5	02185712	Hinge pin			
6	02185710	Top hinge			
7	02185719	Shim for hinge			
8	0489423	Screw			
9	02185977	Emblem			
10	04388362	Door			
11	0489423	Screw			
12	02185640	Sleeve			
13	02185711	Bottom hinge			
14	02185859	Magnetic catch			
15	02185991	Screw			
16	02185571W	Front grill			
17	02185756	Foam pad			
18	02185777	Bottom gasket			
19	0488163	Screw			
20	02185776	Door gasket for A, B or C series			
	02217294	Door gasket for D series			
21	02-3070-01	Scoop			
22	03376439	Leg leveler			
23	02185671	Drain tube			
24	no number	Cabinet, not replaceable			
25	0596023	Clamp			
26	02185730	Cover			
27	03400881	Screw			
28	02185575	Cover for wiring			
29	02154101	Clip for fill tube			
30	0488868	Screw			
31	02929700W	Top for A, B or C series			
	02217293	Top for D series			
32	02185691	Channel for wiring			
33	02185690	Electrical shield			
34	02185645	Top gasket			
35	02185678	Spacer			
36	03400884	Screw			
37	02151652	Hole plug			
38	03400886	Screw			
39	02185695	Door cam			
40	02189000	Hole plug			
41	02185742	Bin door			
42	02217361	Gasket, leg for D series, Not shown			

CSW45 Service Parts Condensing Unit



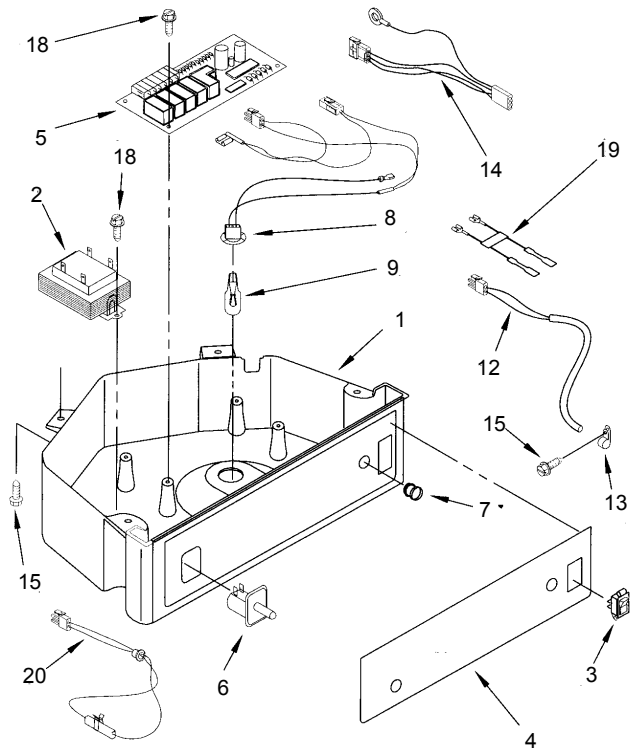
CSW45 Service Parts

Condensing Unit Parts

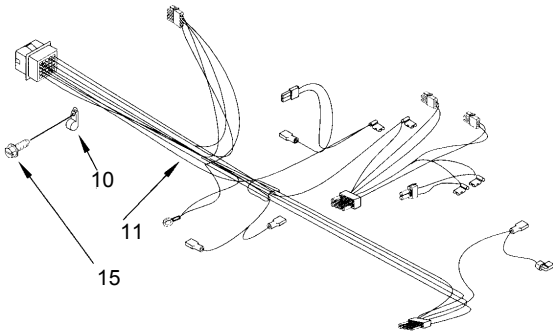
Item Number	Part Number	Description	Item Number	Part Number	Description
1	02180807	Accumulator	18	02185511	Base
2	02185529	Condenser	19	02185965	Grommet
3	0304392	Screw	20	08173859	Shim
4	0486692	Speed nut	21	08201548	"A" Series Compressor incl "A" 22, 23 and 24.
5	02190685	Fan blade			
6	04387244	Fan motor		04387964	"B-D" Series Compressor incl "B-D" 22, 23 and 24
7	0489472	Screw			
8	02185548	Process tube	22	02183404	"A" Series Overload
9	0759112	Hot gas valve coil		02217223	B-D Series Overload
10	0759113	Hot gas valve body	23	02183410	"A" Series Start relay
11	0489423	Screw		02217224	B-D Series Start relay
12	02185960	Clamp	24	02162358	"A" Series terminal cover
13	02185702	Wiring harness	25	08173857	Clip
14	0302819	Wheel	26	02185858	Pad
15	04387019	Dryer	27	0489494	Screw
16	03370389	Bolt	28	02185532	Fan motor bracket
17	0488868	Screw	29	02185675	Foam pad

CSW45 Service Parts

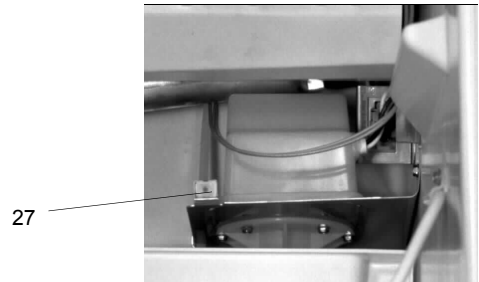
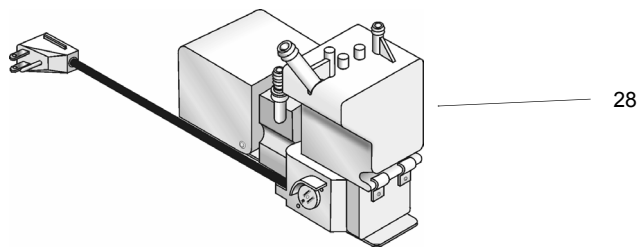
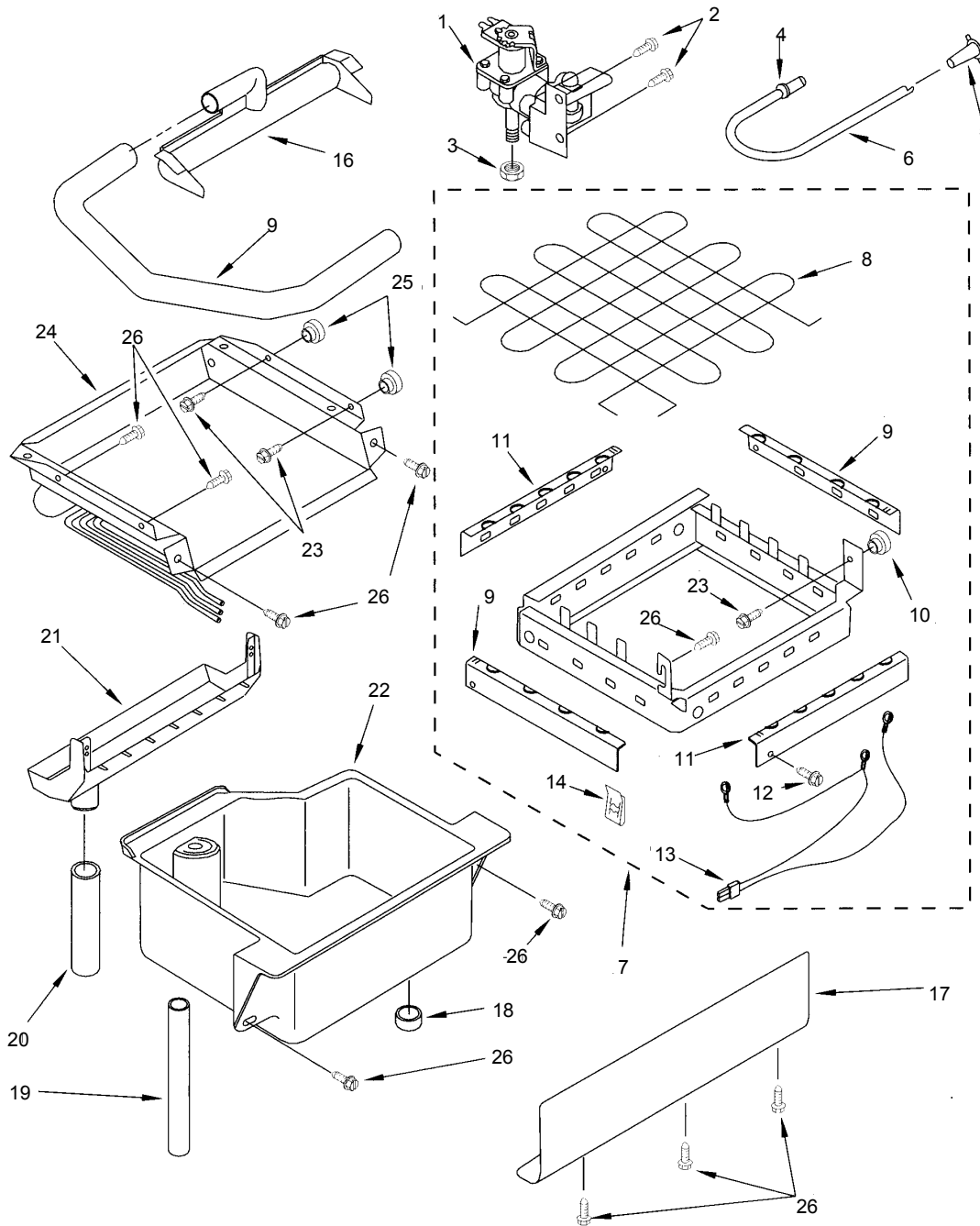
Control Panel



Item Number	Part Number	Description
1	02185867	Box, Control
2	02185657	Transformer
3	02185622W	Switch, Rocker
4	02185871W	Overlay
5	06100499	P.C. Board
6	02149705	Switch, Plunger
7	02185694	Lens, LED
8	02185692	Wiring Harness, Grid/ Light
9	0676304	Bulb
10	02185788	Clamp
11	02185589	Wiring Harness,Control Box
12	02217288	Thermostat, Bin
13	02185825	Clamp
14	02185703	Wiring Harness, Main to Pump
15	03400884	Screw 8-18 X 5/8
18	03400850	Screw 8-16 X 3/8
19	02185808	Wiring Harness,Rocker Switch
20	A38444-021	Thermister, Ice Control



CSW45 Service Parts Water System



CSW45 Service Parts

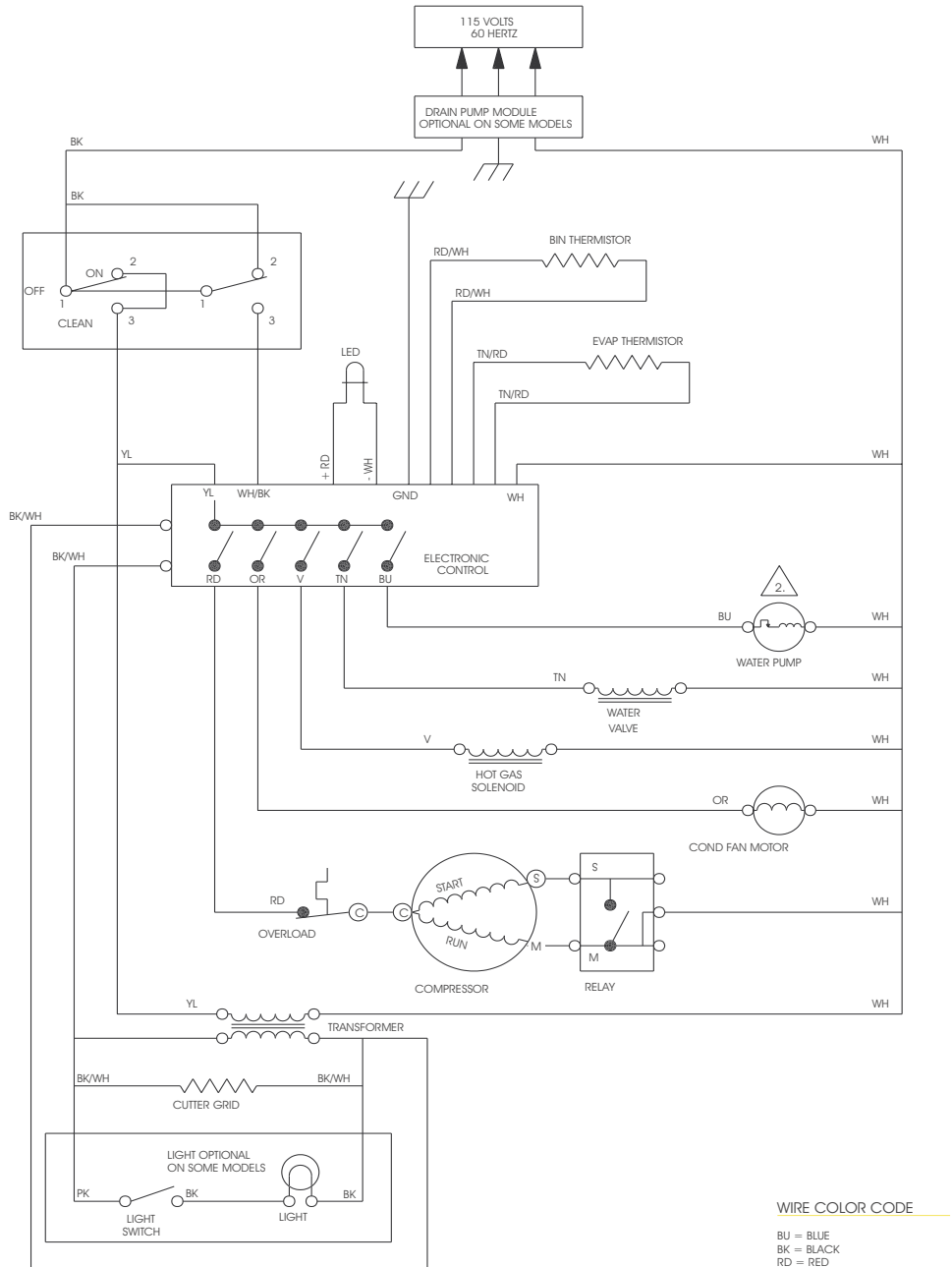
Water System Parts

Item Number	Part Number	Description
1	02-4545-21	Valve, Complete Water
2	0488687	Screw 8-15 X 5/8
3	0627018	Nut, Compression
4	0487627	Sleeve, Compression
5	0841707	Insert, Tube
6	04387492	Tube, Water Fill
7	02313637	Grid Assembly (Complete)
8	04387020	Wire, Grid Cutter - order two
9	02217286	Tube, Plastic
10	0836667	Spacer
11	02185615	Bracket, Front and Rear
12	0489443	Screw
13	02185681	Harness, Grid
14	0488660	Nut, Speed
15	02185611	Bracket, Side Left and Right
16	02185523	Dispenser, Water
17	02185570	Cover, Grid
18	02185696	Cap, Drain
19	02185673	Hose, Overflow
20	02185626	Tube
21	02185625	Reservoir, Water Slide
22	02185624	Reservoir, Water
23	03400886	Screw 8-18 X 1 1/4
24	A38445-021	Evaporator
26	03400884	Screw 8-18 X 5/8
27	02217220	Water pump
28	A37649-001	Drain pump
	02208432	Drain pump hose
29	02217310	Ice guide

29



CSW45 Service Parts Schematic Diagram



NOTE:
1. SOLENOID VALVE GROUNDED THROUGH MOUNTING.

2. FUSE IS INTERNAL TO MOTOR.

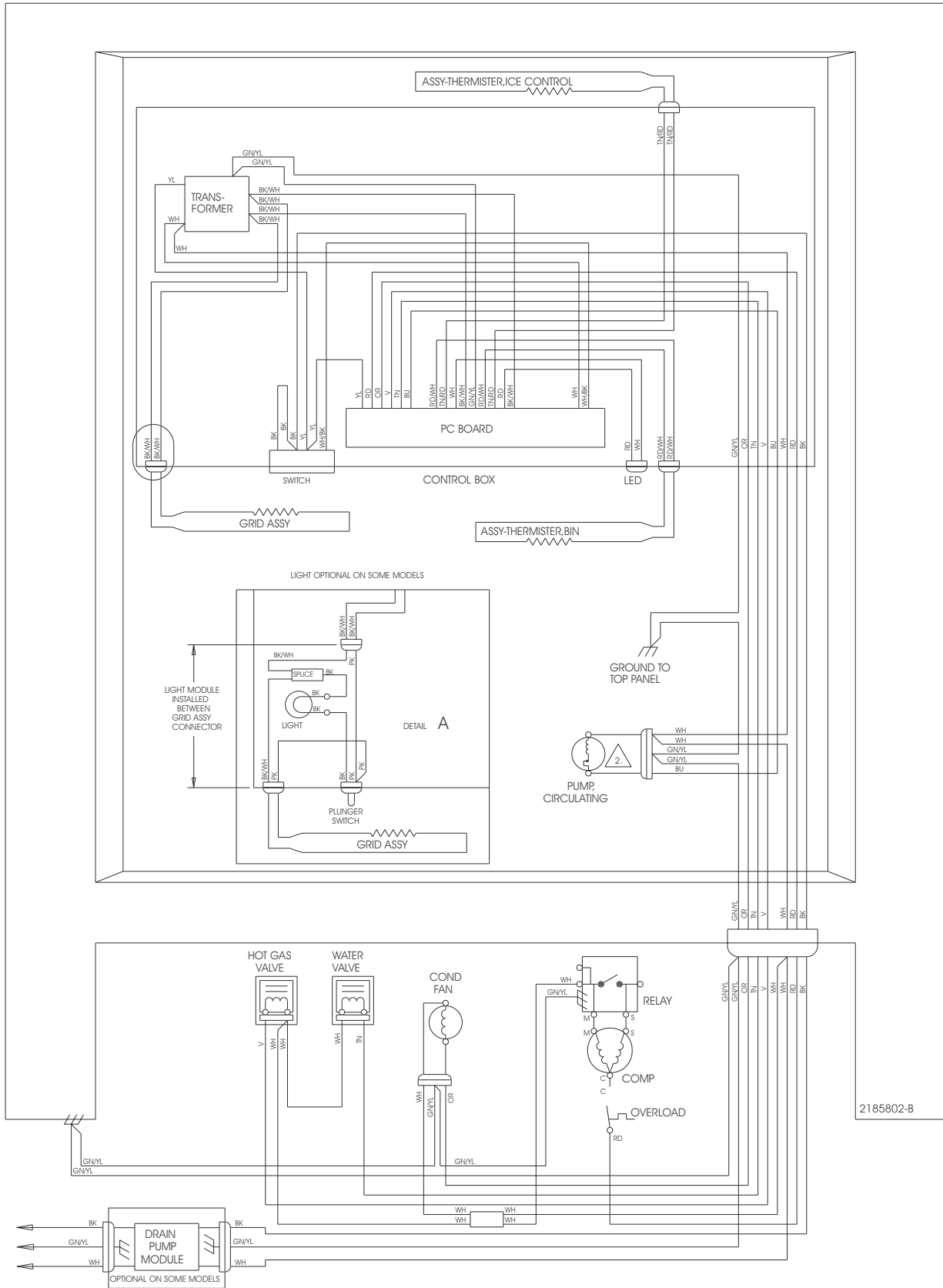
WIRE COLOR CODE

BU = BLUE
BK = BLACK
RD = RED
WH = WHITE
YL = YELLOW
OR = ORANGE
BR = BROWN
GY = GRAY
PK = PINK
V = VIOLET
TN = TAN
OR/BK = ORANGE/BLACK TRACER
Y/RD = YELLOW/RED TRACER
BU/BK = BLUE/BLACK TRACER
WH/BU = WHITE/BLUE TRACER
BK/YL = BLACK/YELLOW TRACER
WH/RD = WHITE/RED TRACER
GN/YL = GREEN/YELLOW TRACER
BK/WH = BLACK/WHITE TRACER
YL/BK = YELLOW/BLACK TRACER
RD/WH = RED/WHITE TRACER

SYMBOL CODE

⊙ = CONNECTOR - SCREW ON
⊗ = CONNECTOR - CLOSED END
○ = DISCONNECT TERMINAL
● = PERMANENT CONNECTION
➤ = PLUG CONNECTOR
⏏ = GROUND (CHASSIS)

CSW45 Service Parts Wiring Diagram



2185802-B



Bulletin Number: PS - 11 - 2001
Bulletin Date: September 2001

SERVICE BULLETIN

Subject: CSW45 Model and Compressor Change

The CSW45's model numbers are now CSW45A-1B and CSW45PA-1B. The B series machines have a different compressor from the original A series.

The new compressor part numbers are:

Compressor: **02208490** (complete with relay, overload and terminal cover)

Relay: **02217224**

Overload: **02217223**

The A and B series compressors are NOT interchangeable.

SERVICE BULLETIN

Subject: CSW45 Update

Clean Light Diagnostics:

The current control board used on the CSW45 is labeled with number 6100499 (this is not the service part number). Use of this control board began in October 2000, and it has been used as a service part since that time.

If the Clean light is flashing on units with this control there are two possible causes:

1. The bin thermistor is not sensed. The Clean light will flash on and off every second.
2. Exceeded maximum harvest time. The Clean light flashes on and off every ½ second.

The typical causes for the long harvest cycle include low charge, hot gas valve problem, big slab of ice stuck on the evaporator.

Other Diagnostics:

Place the CSW45 into the clean mode. At the start of the clean mode the 6100499 board will check the bin and evaporator thermistors.

- If the Clean light blinks 2 times the bin thermistor is disconnected or failed.
- If the Clean light blinks 5 times the evaporator thermistor is disconnected or failed.

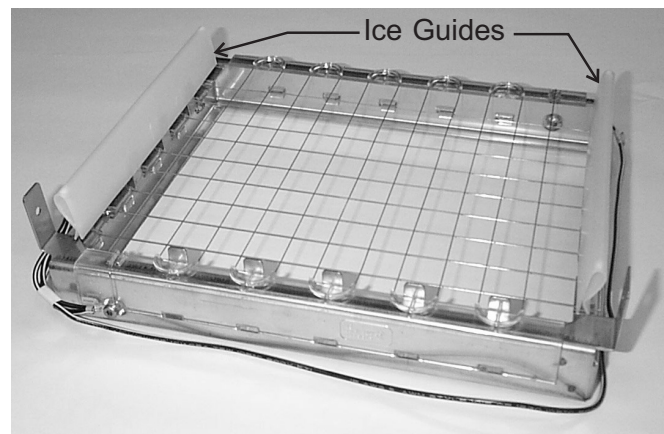
If there is no failure light the reason for the long harvest is not the control system, but could be anything that interferes with the ice slab releasing to the grid.

Ice Guides:

The CSW45 had a design change approximately August 2000 to add ice guides (part number 02208566) to guide the ice slab onto the grid. When placing guides onto a prior model, be sure to bend the stainless steel mounting tabs (part of the grid frame) out slightly, about 3/16".

Other Issues:

- On pump models, (CSW45PA), the drain pump will shut the machine off if the water in the pump's reservoir exceeds a maximum height. At start up, the CSW45 opens the water valve to fill the ice machine reservoir. If the outlet hose of the drain pump is restricted, the pump cannot force the water out fast enough and the pump's reservoir will overfill, causing the pump to shut off the inlet water valve and any other load, such as the bin light. The cure for this is to be certain that the drain hose is not restricted.
- Water inlet tube mis-placement can cause it to freeze shut if next to the evaporator. Check and re-route.
- Evaporator thermistor must make good contact with the suction line or the slab will be too thick.



CSW45 Grid, Shown with Ice Guides



Bulletin Number: PS - 8 - 2003
Bulletin Date: October 2003

SERVICE BULLETIN

Subject: CSW45 Model Revision

The CSW45 is now being manufactured as a D series. The changes are to the top panel gasket, door gasket and leg gasket

The new part numbers are:

- Top panel gasket 02217293
- Door gasket 02217294
- Leg gasket (lower part of door) 02217367



Bulletin Number: PS - 3 - 2003

Bulletin Date: July 2003

SERVICE BULLETIN

Subject: CSW45 evaporator and thermistor change to C series

The evaporator in the CSW45 has been changed. Beginning with C series units, (CSW45-1C), the suction line diameter has increased. This required a change to the thermistor that mounts to the suction line.

Replacement evaporators will now come as a kit with the matching thermistor so they will fit any CSW45.

Replacement thermistors will now come as a kit with both large and small thermistors so they will fit any CSW45.

CSW45 thermistor kit part number **A38444-021** contains both CSW45 thermistors.

CSW45 evaporator kit part number **A38445-021** contains the evaporator and the thermistor that fits it.