



DEA No. RA0571996
 FL License # CMTL-0003
 CLIA No. 10D1094068

Certificate of Analysis

Compliance Test

PUR ISOLABS LLC
 46 FM 3351 N
 BERGHEIM, TEXAS 78004

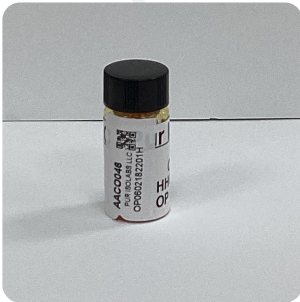
Batch # OP0602182201H
 Batch Date: 2022-02-18
 Extracted From: Hemp

Test Reg State: Florida

Order # PUR220307-030001
 Order Date: 2022-03-07
 Sample # AAC0046

Sampling Date: 2022-03-08
 Lab Batch Date: 2022-03-08
 Completion Date: 2022-03-11

Initial Gross Weight: 11.655 g



Product Image

Potency
 Tested

HHC
 Tested

Potency 20 (LCMS)

Specimen Weight: 45.420 mg

Tested
 (LCMS)

Analyte	LOD (%)	LOQ (%)	Result (mg/g)	(%)
Delta-8 THC	0.0000167286	0.000	45.620	4.562
CBN	0.0669	0.000	6.130	0.613
CBT	0.00000702759	0.000	0.550	0.055
Delta-8 THCV	0.00000419627	0.000	0.280	0.028
THCA-A	0.00000302419	0.000	<LOQ	
THCVA	0.0181	0.000	<LOQ	
THCV	0.0000247525	0.000	<LOQ	
CBC	0.000038782	0.000	<LOQ	
Exo-THC	0.2856	0.000	<LOQ	
Delta-9 THCO-Acetate	0.0000193078	0.000	<LOQ	
CBCA	0.0203	0.000	<LOQ	
CBNA	0.0024	0.000	<LOQ	
CBL	0.00000805009	0.000	<LOQ	
CBGA	0.000000941094	0.000	<LOQ	
CBG	0.00000799858	0.000	<LOQ	
CBDVA	0.00000197368	0.000	<LOQ	
CBDV	0.00000195087	0.000	<LOQ	
CBDA	0.0000015553	0.000	<LOQ	
CBD	0.00000673989	0.000	<LOQ	
Delta-9 THC	0.0006	0.000	<LOQ	

Potency Summary

Total THC None Detected	Total CBD None Detected
Total CBG None Detected	Total CBN 0.613%
Other Cannabinoids 4.644%	Total Cannabinoids 5.257%

HHC Summary

Analyte	Result (mg/g)	(%)	Total/Unit (mg)
Total HHC	824.728	82.4728%	0.00000

Xueli Gao
 Ph.D., DABT
 Lab Toxicologist

Aixia Sun
 D.H.Sc., M.Sc., B.Sc., MT (AAB)
 Lab Director/Principal Scientist



Definitions and Abbreviations used in this report: *Total CBD = CBD + (CBD-A * 0.877), *Total CBDV = CBDV + (CBDVA * 0.87), *Total THC = THCA-A * 0.877 + Delta 9 THC, *Total THCV = THCV + (THCVA * 0.87), *CBG Total = (CBGA * 0.877) + CBG, *CBN Total = (CBNA * 0.877) + CBN, *Total CBC = CBC + (CBCA * 0.877), *Total THC-O-Acetate = Delta 8 THC-O-Acetate + Delta 9 THC-O-Acetate, *Other Cannabinoids Total = Total Cannabinoids - All the listed cannabinoids on the summary section, *Total Detected Cannabinoids = Delta8-THC + Total CBN + CBT + Delta8-THCV + Total CBG + Total CBD + Total THCV + CBL + Total THC + Total CBC + Total CBDV + Delta10-THC + Total THC-O-Acetate, *Analyte Details above show the Dry Weight Concentrations unless specified as 12% moisture concentration. (mg/ml) = Milligrams per Milliliter, LOQ = Limit of Quantitation, LOD = Limit of Detection, Dilution = Dilution Factor (ppb) = Parts per Billion, (%) = Percent, (cfu/g) = Colony Forming Unit per Gram (cfu/g) = Colony Forming Unit per Gram, , LOD = Limit of Detection, (µg/g) = Microgram per Gram (ppm) = Parts per Million, (ppm) = (µg/g), (aw) = aw (area ratio) = Area Ratio, (mg/Kg) = Milligram per Kilogram, *Measurement of Uncertainty = +/- 10%



This report shall not be reproduced, without written approval, from ACS Laboratory. The results of this report relate only to the material or product analyzed. Test results are confidential unless explicitly waived otherwise. Accredited by a third-party accrediting body as a competent testing laboratory pursuant to ISO/IEC 17025 of the International Organization for Standardization.



DEA No. RA0571996
FL License # CMTL-0003
CLIA No. 10D1094068

Certificate of Analysis

Compliance Test

PUR ISOLABS LLC
46 FM 3351 N
BERGHEIM, TEXAS 78004

Batch # OP0602182201H
Batch Date: 2022-02-18
Extracted From: Hemp

Test Reg State: Florida

Order # PUR220307-030001
Order Date: 2022-03-07
Sample # AAC0046

Sampling Date: 2022-03-08
Lab Batch Date: 2022-03-08
Completion Date: 2022-03-11

Initial Gross Weight: 11.655 g



HHC

Specimen Weight: 45.420 mg

Tested (LCMS)

Dilution Factor: 1.000

Analyte	LOQ (%)	Result (mg/g)	(%) Analyte	LOQ (%)	Result (mg/g)	(%)
(9R)-HHC	7.5E-5	234.000000	23.4 (±)9β-hydroxy-HHC	7.5E-5	0.728000	0.0728
(9S)-HHC	7.5E-5	590.000000	59 Total HHC	7.5E-5	824.728000	82.4728

Xueli Gao
Xueli Gao
Lab Toxicologist
Ph.D., DABT

Aixia Sun
Aixia Sun
Lab Director/Principal Scientist
D.H.Sc., M.Sc., B.Sc., MT (AAB)



Definitions and Abbreviations used in this report: *Total CBD = CBD + (CBD-A * 0.877), *Total CBDV = CBDV + (CBDVA * 0.87), *Total THC = THCA-A * 0.877 + Delta 9 THC, *Total THCV = THCV + (THCVA * 0.87), *CBG Total = (CBGA * 0.877) + CBG, *CBN Total = (CBNA * 0.877) + CBN, *Total CBC = CBC + (CBCA * 0.877), *Total THC-O-Acetate = Delta 8 THC-O-Acetate + Delta 9 THC-O-Acetate, *Other Cannabinoids Total = Total Cannabinoids - All the listed cannabinoids on the summary section, *Total Detected Cannabinoids = Delta8-THC + Total CBN + CBT + Delta8-THCV + Total CBG + Total CBD + Total THCV + CBL + Total THC + Total CBC + Total CBDV + Delta10-THC + Total THC-O-Acetate, *Analyte Details above show the Dry Weight Concentrations unless specified as 12% moisture concentration. (mg/ml) = Milligrams per Milliliter, LOQ = Limit of Quantitation, LOD = Limit of Detection, Dilution = Dilution Factor (ppb) = Parts per Billion, (%) = Percent, (cfu/g) = Colony Forming Unit per Gram (cfu/g) = Colony Forming Unit per Gram, LOD = Limit of Detection, (µg/g) = Microgram per Gram (ppm) = Parts per Million, (ppm) = (µg/g), (aw) = aw (area ratio) = Area Ratio, (mg/Kg) = Milligram per Kilogram, *Measurement of Uncertainty = +/- 10%

This report shall not be reproduced, without written approval, from ACS Laboratory. The results of this report relate only to the material or product analyzed. Test results are confidential unless explicitly waived otherwise. Accredited by a third-party accrediting body as a competent testing laboratory pursuant to ISO/IEC 17025 of the International Organization for Standardization.