



DEA No. RA0571996
FL License # CMTL-0003
CLIA No. 10D1094068

Certificate of Analysis

Compliance Test

PUR ISOLABS LLC
46 FM 3351 N
BERGHEIM, TEXAS 78004

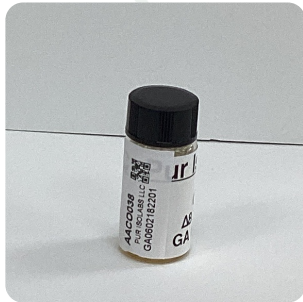
Batch # GA0602182201
Batch Date: 2022-02-18
Extracted From: Hemp

Test Reg State: Florida

Order # PUR220307-200001
Order Date: 2022-03-07
Sample # AAC0038

Sampling Date: 2022-03-08
Lab Batch Date: 2022-03-08
Completion Date: 2022-03-11

Initial Gross Weight: 8.803 g



Product Image

Potency
Tested

**Delta 8/Delta 10
Potency 12**

Specimen Weight: 52.340 mg

Analyte	LOD (%)	LOQ (%)	Result (mg/g)	(%)
Delta-8 THC	0.000026	0.001	681.700	68.170
CBC	0.000018	0.001	<LOQ	<LOQ
CBD	0.000054	0.001	<LOQ	<LOQ
THCA-A	0.000032	0.001	<LOQ	<LOQ
Delta-9 THC	0.000013	0.001	<LOQ	<LOQ
Delta-10 THC	0.000003	0.001	<LOQ	<LOQ
CBN	0.000014	0.001	<LOQ	<LOQ
CBGA	0.000008	0.001	<LOQ	<LOQ
CBG	0.000248	0.001	<LOQ	<LOQ
CBDV	0.000065	0.001	<LOQ	<LOQ
CBDA	0.000001	0.001	<LOQ	<LOQ
THCV	0.000007	0.001	<LOQ	<LOQ

Tested
(LCUV)

Potency Summary

Total Delta 8 68.170%	-	Total Delta 10 None Detected
Total THC None Detected	-	Total CBD None Detected
Total CBG None Detected	-	Total CBN None Detected
Other Cannabinoids None Detected	-	Total Cannabinoids 68.170%

Xueli Gao Lab Toxicologist
Ph.D., DABT

Aixia Sun Lab Director/Principal Scientist
D.H.Sc., M.Sc., B.Sc., MT (AAB)



Definitions and Abbreviations used in this report: *Total CBD = CBD + (CBD-A * 0.877), *Total CBDV = CBDV + (CBDVA * 0.87), *Total THC = THCA-A * 0.877 + Delta 9 THC, *Total THCV = THCV + (THCVA * 0.87), *CBG Total = (CBGA * 0.877) + CBG, *CBN Total = (CBNA * 0.877) + CBN, *Total CBC = CBC + (CBCA * 0.877), *Total THC-O-Acetate = Delta 8 THC-O-Acetate + Delta 9 THC-O-Acetate, *Other Cannabinoids Total = Total Cannabinoids - All the listed cannabinoids on the summary section, *Total Detected Cannabinoids = Delta8-THC + Total CBN + CBT + Delta8-THCV + Total CBG + Total CBD + Total THCV + CBL + Total THC + Total CBC + Total CBDV + Delta10-THC + Total THC-O-Acetate, *Analyte Details above show the Dry Weight Concentrations unless specified as 12% moisture concentration. (mg/ml) = Milligrams per Milliliter, LOQ = Limit of Quantitation, LOD = Limit of Detection, Dilution = Dilution Factor (ppb) = Parts per Billion, (%) = Percent, (cfu/g) = Colony Forming Unit per Gram (cfu/g) = Colony Forming Unit per Gram, LOD = Limit of Detection, (µg/g) = Microgram per Gram (ppm) = Parts per Million, (ppm) = (µg/g), (aw) = aw (area ratio) = Area Ratio, (mg/Kg) = Milligram per Kilogram, *Measurement of Uncertainty = +/- 10%

This report shall not be reproduced, without written approval, from ACS Laboratory. The results of this report relate only to the material or product analyzed. Test results are confidential unless explicitly waived otherwise. Accredited by a third-party accrediting body as a competent testing laboratory pursuant to ISO/IEC 17025 of the International Organization for Standardization.