



DEA No. RA0571996
FL License # CMTL-0003
CLIA No. 10D1094068

Certificate of Analysis

Compliance Test

PUR ISOLABS LLC
46 FM 3351 N
BERGHEIM, TEXAS 78004

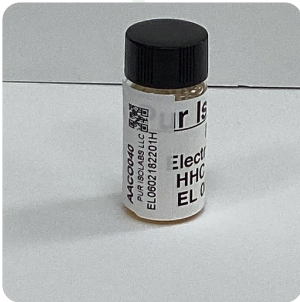
Batch # EL0602182201H
Batch Date: 2022-02-18
Extracted From: Hemp

Test Reg State: Florida

Order # PUR220307-200001
Order Date: 2022-03-07
Sample # AAC0040

Sampling Date: 2022-03-08
Lab Batch Date: 2022-03-08
Completion Date: 2022-03-11

Initial Gross Weight: 9.619 g



Product Image

Potency
Tested

HHC
Tested

Potency 20 (LCMS)

Specimen Weight: 54.790 mg

Tested
(LCMS)

Analyte	LOD (%)	LOQ (%)	Result (mg/g)	(%)
CBN	0.0669	0.000	49.010	4.901
Delta-8 THC	0.0000167286	0.000	6.080	0.608
CBT	0.00000702759	0.000	0.550	0.055
Delta-8 THCV	0.00000419627	0.000	0.150	0.015
THCA-A	0.00000302419	0.000	<LOQ	
THCVA	0.0181	0.000	<LOQ	
THCV	0.0000247525	0.000	<LOQ	
CBC	0.000038782	0.000	<LOQ	
Exo-THC	0.2856	0.000	<LOQ	
Delta-9 THCO-Acetate	0.0000193078	0.000	<LOQ	
CBCA	0.0203	0.000	<LOQ	
CBNA	0.0024	0.000	<LOQ	
CBL	0.00000805009	0.000	<LOQ	
CBGA	0.000000941094	0.000	<LOQ	
CBG	0.00000799858	0.000	<LOQ	
CBDVA	0.00000197368	0.000	<LOQ	
CBDV	0.00000195087	0.000	<LOQ	
CBDA	0.0000015553	0.000	<LOQ	
CBD	0.00000673989	0.000	<LOQ	
Delta-9 THC	0.0006	0.000	<LOQ	

Potency Summary

Total THC None Detected	Total CBD None Detected
Total CBG None Detected	Total CBN 4.901%
Other Cannabinoids 0.679%	Total Cannabinoids 5.580%

HHC Summary

Analyte	Result (mg/g)	(%)	Total/Unit (mg)
Total HHC	944.099124	94.4099124%	0.00000

Xueli Gao
Lab Toxicologist
Ph.D., DABT

Aixia Sun
Lab Director/Principal Scientist
D.H.Sc., M.Sc., B.Sc., MT (AAB)



Definitions and Abbreviations used in this report: *Total CBD = CBD + (CBD-A * 0.877), *Total CBDV = CBDV + (CBDVA * 0.87), *Total THC = THCA-A * 0.877 + Delta 9 THC, *Total THCV = THCV + (THCVA * 0.87), *CBG Total = (CBGA * 0.877) + CBG, *CBN Total = (CBNA * 0.877) + CBN, *Total CBC = CBC + (CBCA * 0.877), *Total THC-O-Acetate = Delta 8 THC-O-Acetate + Delta 9 THC-O-Acetate, *Other Cannabinoids Total = Total Cannabinoids - All the listed cannabinoids on the summary section, *Total Detected Cannabinoids = Delta8-THC + Total CBN + CBT + Delta8-THCV + Total CBG + Total CBD + Total THCV + CBL + Total THC + Total CBC + Total CBDV + Delta10-THC + Total THC-O-Acetate, *Analyte Details above show the Dry Weight Concentrations unless specified as 12% moisture concentration. (mg/ml) = Milligrams per Milliliter, LOQ = Limit of Quantitation, LOD = Limit of Detection, Dilution = Dilution Factor (ppb) = Parts per Billion, (%) = Percent, (cfu/g) = Colony Forming Unit per Gram (cfu/g) = Colony Forming Unit per Gram, , LOD = Limit of Detection, (µg/g) = Microgram per Gram (ppm) = Parts per Million, (ppm) = (µg/g), (aw) = aw (area ratio) = Area Ratio, (mg/Kg) = Milligram per Kilogram, *Measurement of Uncertainty = +/- 10%



This report shall not be reproduced, without written approval, from ACS Laboratory. The results of this report relate only to the material or product analyzed. Test results are confidential unless explicitly waived otherwise. Accredited by a third-party accrediting body as a competent testing laboratory pursuant to ISO/IEC 17025 of the International Organization for Standardization.



DEA No. RA0571996
FL License # CMTL-0003
CLIA No. 10D1094068

Certificate of Analysis

Compliance Test

PUR ISOLABS LLC
46 FM 3351 N
BERGHEIM, TEXAS 78004

Batch # EL0602182201H
Batch Date: 2022-02-18
Extracted From: Hemp

Test Reg State: Florida

Order # PUR220307-200001
Order Date: 2022-03-07
Sample # AAC0040

Sampling Date: 2022-03-08
Lab Batch Date: 2022-03-08
Completion Date: 2022-03-11

Initial Gross Weight: 9.619 g



HHC

Specimen Weight: 46.460 mg

Tested (LCMS)

Dilution Factor: 1.000

Analyte	LOQ (%)	Result (mg/g)	(%)	Analyte	LOQ (%)	Result (mg/g)	(%)
(9R)-HHC	7.5E-5	359.335475	35.9335475	(±)9β-hydroxy-	7.5E-5	0.732046	0.0732046
(9S)-HHC	7.5E-5	584.031603	58.4031603	HHC			
				Total HHC	7.5E-5	944.099124	94.4099124

Xueli Gao
Xueli Gao
Ph.D., DABT
Lab Toxicologist

Aixia Sun
Aixia Sun
D.H.Sc., M.Sc., B.Sc., MT (AAB)
Lab Director/Principal Scientist



Definitions and Abbreviations used in this report: *Total CBD = CBD + (CBD-A * 0.877), *Total CBDV = CBDV + (CBDVA * 0.87), *Total THC = THCA-A * 0.877 + Delta 9 THC, *Total THCV = THCV + (THCVA * 0.87), *CBG Total = (CBGA * 0.877) + CBG, *CBN Total = (CBNA * 0.877) + CBN, *Total CBC = CBC + (CBCA * 0.877), *Total THC-O-Acetate = Delta 8 THC-O-Acetate + Delta 9 THC-O-Acetate, *Other Cannabinoids Total = Total Cannabinoids - All the listed cannabinoids on the summary section, *Total Detected Cannabinoids = Delta8-THC + Total CBN + CBT + Delta8-THCV + Total CBG + Total CBD + Total THCV + CBL + Total THC + Total CBC + Total CBDV + Delta10-THC + Total THC-O-Acetate, *Analyte Details above show the Dry Weight Concentrations unless specified as 12% moisture concentration. (mg/ml) = Milligrams per Milliliter, LOQ = Limit of Quantitation, LOD = Limit of Detection, Dilution = Dilution Factor (ppb) = Parts per Billion, (%) = Percent, (cfu/g) = Colony Forming Unit per Gram (cfu/g) = Colony Forming Unit per Gram, LOD = Limit of Detection, (µg/g) = Microgram per Gram (ppm) = Parts per Million, (ppm) = (µg/g), (aw) = aw (area ratio) = Area Ratio, (mg/Kg) = Milligram per Kilogram, *Measurement of Uncertainty = +/- 10%

This report shall not be reproduced, without written approval, from ACS Laboratory. The results of this report relate only to the material or product analyzed. Test results are confidential unless explicitly waived otherwise. Accredited by a third-party accrediting body as a competent testing laboratory pursuant to ISO/IEC 17025 of the International Organization for Standardization.