



DEA No. RA0571996  
 FL License # CMTL-0003  
 CLIA No. 10D1094068

# Certificate of Analysis

## Compliance Test

**PUR ISOLABS LLC**  
 46 FM 3351 N  
 BERGHEIM, TEXAS 78004

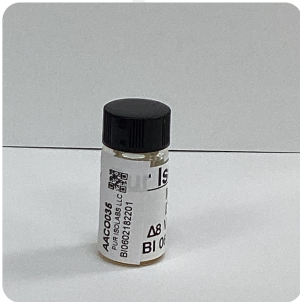
Batch # BI0602182201  
 Batch Date: 2022-02-18  
 Extracted From: Hemp

Test Reg State: Florida

Order # PUR220307-200001  
 Order Date: 2022-03-07  
 Sample # AAC0035

Sampling Date: 2022-03-08  
 Lab Batch Date: 2022-03-08  
 Completion Date: 2022-03-11

Initial Gross Weight: 9.282 g



Product Image

Potency  
 Tested

**Delta 8/Delta 10  
 Potency 12**

Specimen Weight: 59.540 mg

Analyte	LOD (%)	LOQ (%)	Result (mg/g)	(%)
Delta-8 THC	0.000026	0.001	672.500	67.250
CBN	0.000014	0.001	2.630	0.263
CBC	0.000018	0.001	<LOQ	<LOQ
CBD	0.000054	0.001	<LOQ	<LOQ
THCA-A	0.000032	0.001	<LOQ	<LOQ
Delta-9 THC	0.000013	0.001	<LOQ	<LOQ
Delta-10 THC	0.000003	0.001	<LOQ	<LOQ
CBGA	0.000008	0.001	<LOQ	<LOQ
CBG	0.000248	0.001	<LOQ	<LOQ
CBDV	0.000065	0.001	<LOQ	<LOQ
CBDA	0.000001	0.001	<LOQ	<LOQ
THCV	0.000007	0.001	<LOQ	<LOQ

**Tested**  
 (LCUV)

**Potency Summary**

<b>Total Delta 8</b> 67.250%	-	<b>Total Delta 10</b> None Detected
<b>Total THC</b> None Detected	-	<b>Total CBD</b> None Detected
<b>Total CBG</b> None Detected	-	<b>Total CBN</b> 0.263%
<b>Other Cannabinoids</b> None Detected	-	<b>Total Cannabinoids</b> 67.513%

Xueli Gao  
 Ph.D., DABT  
 Lab Toxicologist

Aixia Sun  
 D.H.Sc., M.Sc., B.Sc., MT (AAB)  
 Lab Director/Principal Scientist



Definitions and Abbreviations used in this report: \*Total CBD = CBD + (CBD-A \* 0.877), \*Total CBDV = CBDV + (CBDVA \* 0.87), \*Total THC = THCA-A \* 0.877 + Delta 9 THC, \*Total THCV = THCV + (THCVA \* 0.87), \*CBG Total = (CBGA \* 0.877) + CBG, \*CBN Total = (CBNA \* 0.877) + CBN, \*Total CBC = CBC + (CBCA \* 0.877), \*Total THC-O-Acetate = Delta 8 THC-O-Acetate + Delta 9 THC-O-Acetate, \*Other Cannabinoids Total = Total Cannabinoids - All the listed cannabinoids on the summary section, \*Total Detected Cannabinoids = Delta8-THC + Total CBN + CBT + Delta8-THCV + Total CBG + Total CBD + Total THCV + CBL + Total THC + Total CBC + Total CBDV + Delta10-THC + Total THC-O-Acetate, \*Analyte Details above show the Dry Weight Concentrations unless specified as 12% moisture concentration. (mg/ml) = Milligrams per Milliliter, LOQ = Limit of Quantitation, LOD = Limit of Detection, Dilution = Dilution Factor (ppb) = Parts per Billion, (%) = Percent, (cfu/g) = Colony Forming Unit per Gram (cfu/g) = Colony Forming Unit per Gram, , LOD = Limit of Detection, (µg/g) = Microgram per Gram (ppm) = Parts per Million, (ppm) = (µg/g), (aw) = aw (area ratio) = Area Ratio, (mg/Kg) = Milligram per Kilogram, \*Measurement of Uncertainty = +/- 10%

This report shall not be reproduced, without written approval, from ACS Laboratory. The results of this report relate only to the material or product analyzed. Test results are confidential unless explicitly waived otherwise. Accredited by a third-party accrediting body as a competent testing laboratory pursuant to ISO/IEC 17025 of the International Organization for Standardization.