



PRODUCT DATA SHEET

- Restore
- Rejuvenate
- Protect with New Zealand Green tea

The foundational component of our ZeaDerMX® range is a bioactive extract of 100% New Zealand grown and organic green tea, handpicked from globally awarded and certified-organic Zealong estate. Grown in pristine soils in the Waikato region, Zealong tea harvest the true essence of world's unique clean, pristine, and biodiverse New Zealand ecosystem.



**ORGANIC
BIOACTIVES**
NEW ZEALAND

INNOVATING FROM TRADITION™

ZeaDerMX®

RANGE

The all-natural
formulae booster
for UV and pollution
exposed skin and hair



ADDRESSES

- Skin and hair damage
- Skin and hair exposure to or by the sun and pollutants
- Pre-mature skin ageing

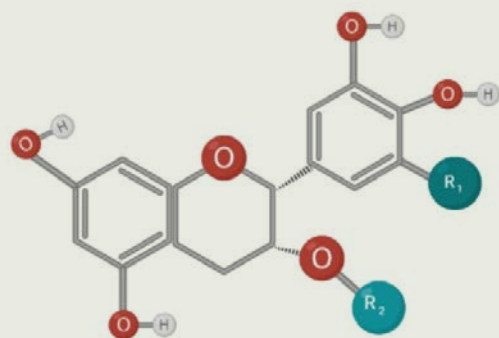


A buffer between your skin and the world in which we live

Every day we are exposed to pollutants, sun damage, and prolonged exposure to ultraviolet radiation from the sunlight causes premature skin ageing. This ageing is due to UV radiation penetrating the skin and generating free radicals in skin cells. Our porous skin surface also makes us defenceless to air pollutants and industrial

chemical pollutants. Highly active free radicals can oxidise nearby biomolecules and damage DNA. This can lead to inflammation and hyperpigmentation in the skin and ultimately premature ageing of the skin.

The ZeaDerMX® range of green tea infusions was developed to actively target most common skin and hair concerns, especially those related to environmental pollution and UV damage. Our innovative range of bioactive ingredients regenerates and restores by harnessing high performing biomolecules found in New Zealand-grown green tea.



R1 group	R2 group	Green Tea Catechin
H	H	Epicatechin (EC)
H	G	Epicatechin-3-gallate (ECG)
OH	H	Epigallocatechin (EGC)
OH	G	Epigallocatechin-3-gallate (EGCG)

Fig. 1. The general chemical structure of a catechin from green tea, whereby R1 and R2 groups differ to produce different catechins.

Catechins	Secondary Polyphenol
Epicatechin (EC) + Epigallocatechin (EGC)	Theaflavin (TF1)
Epicatechin (EC) + Epigallocatechin-3-gallate (EGCG)	TF-3-O-gallate (TF2a)
Epicatechin-3-gallate (ECG) + Epigallocatechin (EGC)	TF 3'-O-gallate (TF2b)
Epicatechin-3-gallate (ECG) + Epigallocatechin-3-gallate (EGCG)	TF 3,3'-di-O-gallate (TF3)

Table 1. Catechin a in green tea leaves, used by PPO or POD to catalyse the production of secondary polyphenols.

Products in the ZeaDerMX® range

- **ZeaDerMX® G** - [Vegetable Glycerin & Camellia Sinensis Leaf] - skincare, haircare
- **ZeaDerMX® P** - [Propanediol & Camellia Sinensis Leaf] - skincare, makeup, haircare
- **ZeaDerMX® CO** - [Camellia Oleifera seed oil & Camellia Sinensis Leaf] – skincare, haircare
- **ZeaDerMX® CT** – [Caprylic/Capric Triglyceride & Camellia Sinensis Leaf] – skincare, make up, haircare

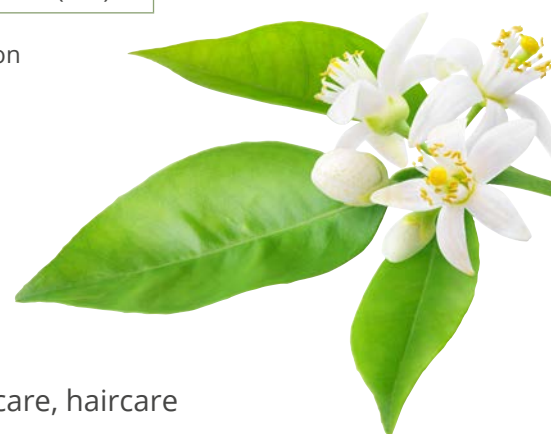
SUGGESTED CONCENTRATION USE 0,5 - 5%

Aotearoa - the Powerhouse of Clean Beauty Cosmetic Bioactives

New Zealand's exposure to ozone hole and untainted ecosystem is the perfect environment for producing quality bioactive compounds. Zealand Tea producers carefully hand-harvest young *Camellia sinensis* leaves to prevent oxidation. This method preserves a high level of polyphenols, including catechins such as epigallocatechin-3 gallate (EGCG), epigallocatechin (EGC) and epicatechin-3 gallate (ECG). This combination of unique environment, rich volcanic soil and highly potent polyphenols provides New Zealand-grown green tea with numerous beauty and health benefits.

The Story of ZeaDerMX® - natural plant power meets clean beauty extractions

At the crossroad between traditional growing and harvesting practices and clean beauty extraction technology is where you find the ZeaDerMX® range. Bursting with powerful antioxidants, proven to be an effective tool in natural skin and hair repair, ZeaDerMX®'s powerful multitasking modes of action help effectively neutralise and remove damaging free radicals from the surface of the skin and hair, aiding to interrupt damage in the process. The ZeaDerMX® range integrates premium cosmetic green tea bioactives into existing or newly developed skin and hair care formulations in an easy-to-formulate manner to boost efficacy and performance. Our proprietary green tea bioactives are obtained by green chemistry PlantæXtraction™ - to retain the plant vitality and efficiently releases vitamins, antioxidants, enzymes, and minerals.

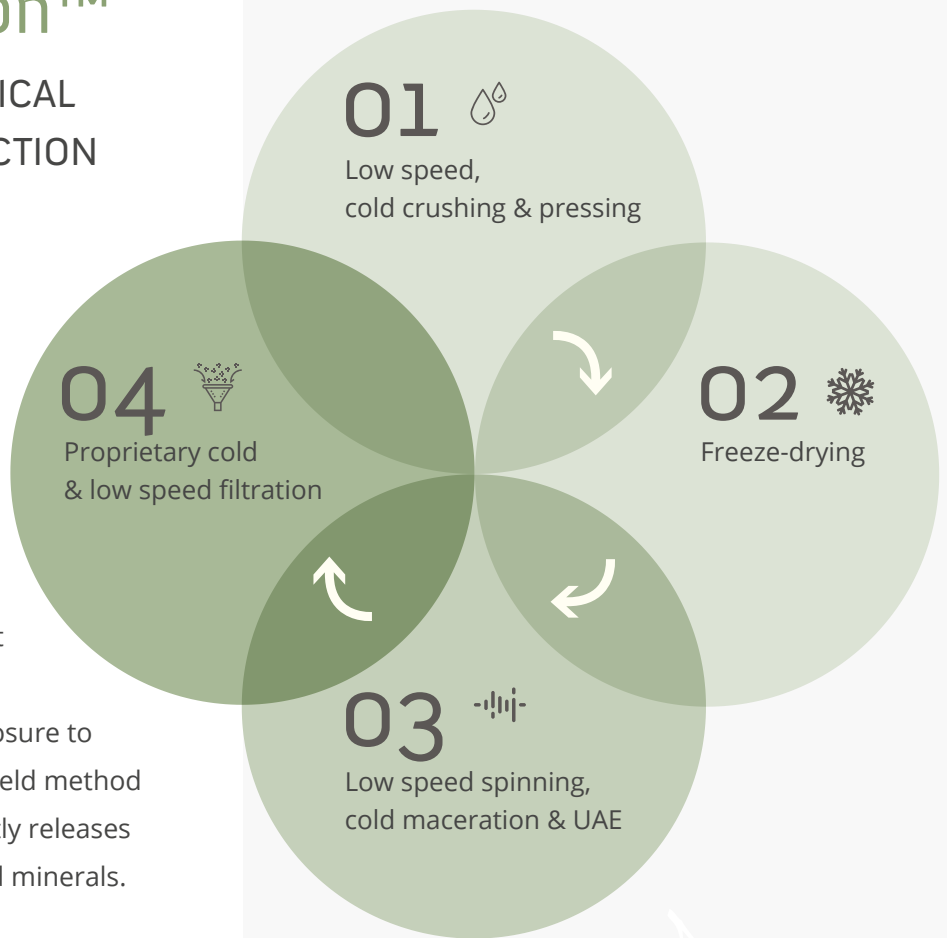


TECHNOLOGY

PlantæXtraction™

COLD & LOW-SPEED PHYSICAL CELL DISRUPTION, EXTRACTION AND FILTRATION

ZeaDerMX® range is sustainably obtained by PlantæXtraction™ - our innovative, clean beauty multi-step extraction technology. This innovative combination of multiple scientifically proved green extraction methods is a low speed, cold crushing & pressing system that physically disrupts and breaks open plants' cell walls under reduced exposure to air and heat. This low impact, high yield method retains the plant vitality and efficiently releases vitamins, antioxidants, enzymes, and minerals.



**ORGANIC
BIOACTIVES**

NEW ZEALAND

INNOVATING FROM TRADITION™

THE VISION

To enhance the skin's appearance and health by working with the rhythms of Nature

Organic Bioactives Ltd.

Level 1, 57 Symonds Street
1010 Grafton, Auckland
New Zealand

MAIL: info@organicbioactives.com

www.organicbioactives.com

