

EZ Wick Setter™ Operating Instructions

For the Single Wick Setting Tool



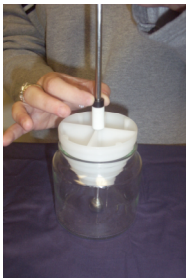
Thank you for purchasing your new **EZ Wick Setter™**. Before you begin to use your new **EZ Wick Setter™**, please take a moment to inspect it to be sure no damage was incurred in transit.

The **EZ Wick Setter™** was designed to fit most of the most popular containers used by candlemakers. If it does not fit the containers you use, send us your **EZ Wick Setter™** and a container, and we will modify it for you at no additional charge. Contact us at ezwicksys@houston.rr.com or see our web site at www.ezwicksys.com for shipping instructions.

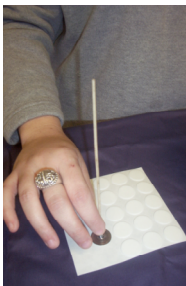


1. Place your **EZ Wick Setter™** in the size container you desire to wick.

Loosen the thumb screw and allow the wick tube magnet to rest on the bottom of container.



2. Push the collar down, depressing the spring until it rests against the stop. While holding the collar down, tighten the thumb screw. **Caution:** Do not over tighten thumb screw as this may damage the wick tube. Now your **EZ Wick Setter™** is set up for that size and height container.



3. Apply adhesive to the bottom of your wick tabs. We suggest using one of the products made for this purpose and should be available at your suppliers.



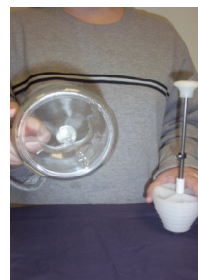
4. Insert the wick into the wick tube until the metal wick tab rests against the magnet.



5. Place the **EZ Wick Setter™** in the container. While holding the **EZ Wick Setter™** firmly and squarely on the container, depress the handle, setting the wick in the container. **Note:** It is not necessary to use excessive force when setting the wick.



6. Remove the **EZ Wick Setter™** from the container and repeat the process for the remainder of your containers.



7. There! It's that quick and easy. Your container now has a wick that is perfectly centered and seated.

We guarantee our products against defects in materials and workmanship for one year from date of purchase.