

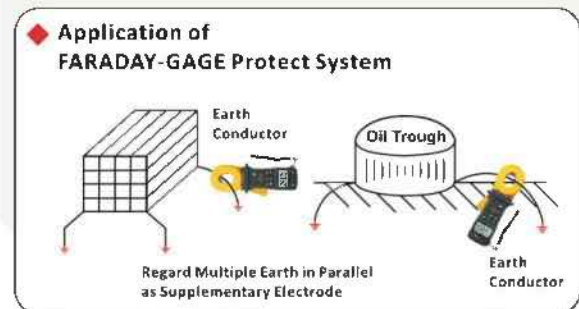
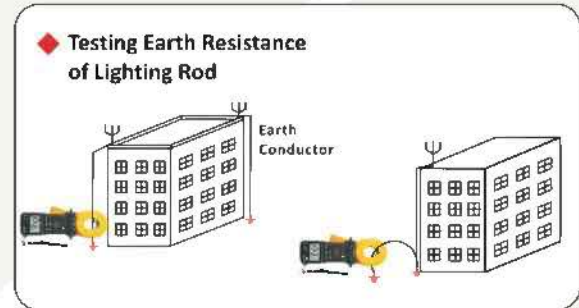
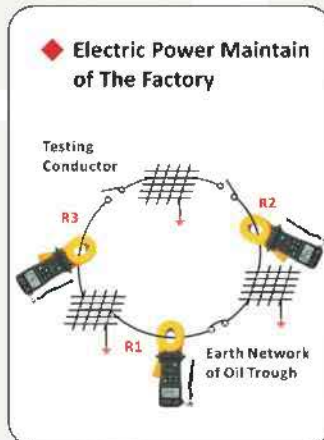
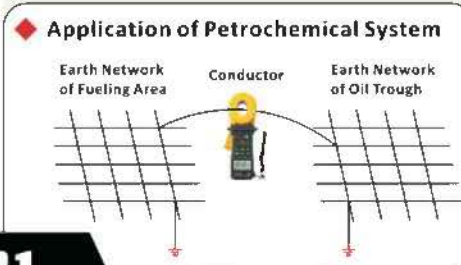
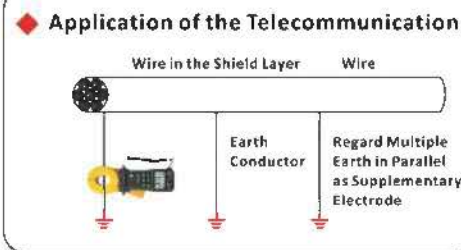
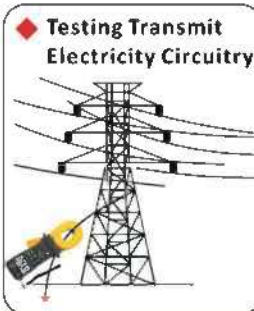
### EARTH RESISTANCE CLAMP METER

#### MS2301

**MS2301**

**RESISTANCE**  
0.01~1200Ω

**CURRENT**  
0.1mA~20A



#### Specifications

MS2301

Specifications	Range	Resolution	Accuracy
Measuring Resistance	0.01 Ω~0.999Ω	0.001 Ω	±(1.5%+0.01)
	1 Ω~9.99Ω	0.01 Ω	±(1.5%+0.3)
	10 Ω~99.9Ω	0.1 Ω	±(3.0%+0.3)
	100Ω~199.9Ω	1 Ω	±(5.0%+3)
	200Ω~400Ω	5 Ω	±(6.0%+5)
	400Ω~600Ω	10 Ω	±(10%+10)
Measuring Current	600Ω~1200Ω	20 Ω	±(20%+20)
	100mA	0.1 mA	±(3.5%+1)
	300mA	0.3 mA	±(3.5%+2)
	1A	0.001 A	±(3.5%+0.003)
	3A	0.003 A	±(3.5%+0.01)
	10A	0.01 A	±(3.5%+0.03)
	20A	0.03 A	±(3.5%+0.05)

#### Features

Display	counts	9999
Jaw Opening	45mm×32mm/1.8"×1.3"	●
Auto Ranging	Auto & Manual	●
APO	Auto Power Off	●
Test Voltage	3700V	●
Logging and Recall	99 groups	●
Alarm Limit Setting	Setting Alarm Threshold in 1~100Ω	●
LBD	Low Battery Display	●
Buzzer ON Symbol		●
Data Hold		●

#### General

Power Supply	1×9V ALKALINE Battery
Product Size	276mm×104mm×54mm/10.8"×4.33"×2.1"
Product Weight	1050g/2.31lb
Safety Rating	CE(EMC+LVD) ETL CAT III 150V RoHS